

# City of Phoenix, Water Services Department Fire Flow Test Result



Location: **FIRE FLOW TEST - 7100 N MOCKING BIRD** Q.S. No. **Q23-43**  
 KIVA/Project # **WSFT 20037744**  
 For: **LAND DEVELOPMENT GROUP LLC**  
 Requested By: **NICK@LDGENG.COM** Request Date: **10/8/2020 2:27:41**  
 Phone: **602-889-1984** E-MAIL: **NICK@LDGENG.COM**  
 Test Type: **X** 2.5" Std. **4" Std.** Single  
 Observers: **COP**  
 Test Time: **12:00 PM** Test Date: **10/20/2020**

**CAUTION:** Results of this flow test identify water system characteristics for the date, time, and locations of this test only.

Pressure and flows within the water system can vary with time, seasonal and operational pressure variations can be as much as 20 psi. It is expected and should be considered when preparing designs based upon fire flow test data.

Numerous factors affect the water system, such as water level fluctuations in reservoirs, operating pressure ranges at booster pump stations, elevations at point of use, daily demand fluctuations, seasonal demands, emergency demands, water treatment plant availability, increased demands due to growth, operation/maintenance schedules, etc.

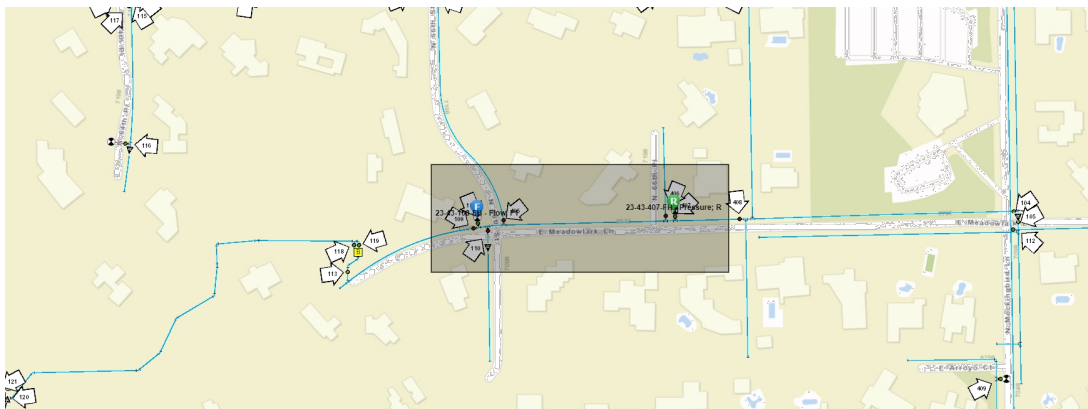
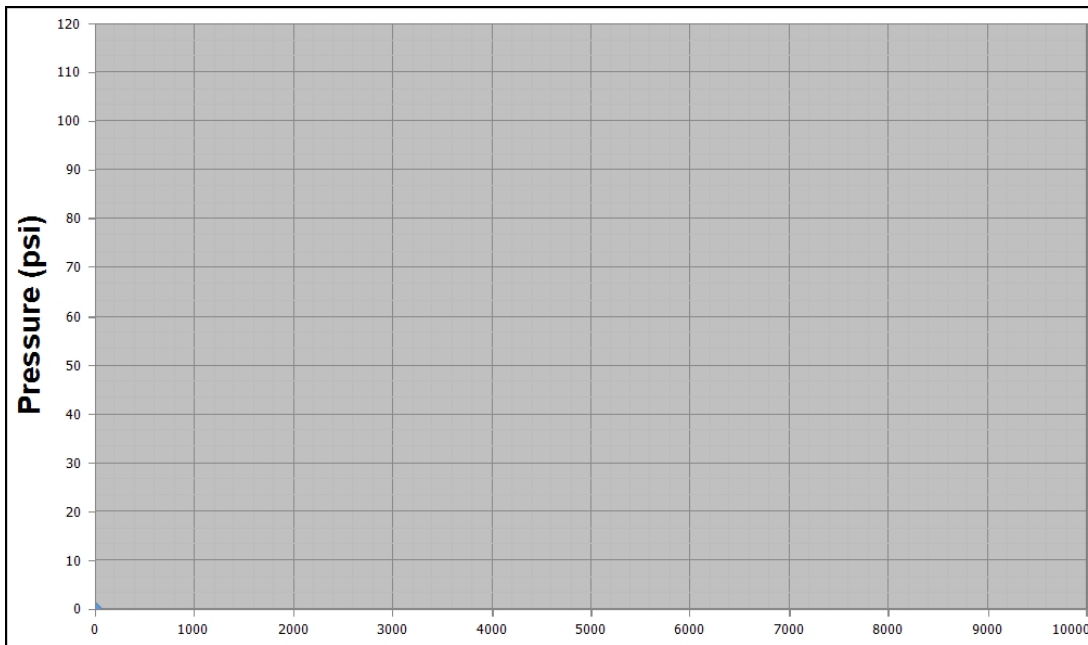
Designers should consider the above when preparing designs based upon fire flow test data. The City of Phoenix may be able to provide additional information on water system characteristics upon request.

NOTE: TEST LOCATION SKETCH IS ATTACHED

Observed Test Data						
HYDRANT DESIGNATION	HYDRANT NUMBER	FLOW OPENING (2.5" or 4")	STATIC PRESSURE (psi)	RESIDUAL PRESSURE (psi)	PITOT PRESSURE (psi)	FLOW (gpm)
Pressure, R	23-43-407-FH		90	74		
Flow, F1	23-43-108-FH	2.5			42	1087
Flow, F2						
Flow, F3						
Flow, F4						
Note: Hydrant Nozzle Coef. = 0.9			**Pressure Drop %		Total Flow:	
			17.8%		1087	

Calculated Results **			** Theoretical calculation of expected flows or rated capacities are based on sufficient discharge to cause a drop in pressure at the residual hydrant of at least 25%.  Calculated flow values will not appear if a 25% pressure drop between static and residual pressures is not reached. If additional volume is required, a complex 4-inch port fire flow test may be needed.
Pressure (psi)	20	25	
Flow (gpm)	NA	NA	

Instructions: All Fields Highlighted Green can be used.





**City Of Phoenix**  
Water Services Department  
Infrastructure Record Services

October 8, 2020

Ascension Lutheran Church Inc  
Dustin Wagoner

RE: 174-51-033  
7100 N Mockingbird Ln  
Q.S.# 23-43

Dustin Wagoner,

Your request for water availability to the mentioned properties/street has been reviewed. The property is in the City of Phoenix service area. You have the capability to connect to the City of Phoenix Water System.

If you have any questions regarding these guidelines, please contact via email [mario.murillo@phoenix.gov](mailto:mario.murillo@phoenix.gov) or call (602) 256-4296.

Sincerely,

*Mario Murillo*

Mario Murillo  
Water Services Department  
Infrastructure Record Services



3010 W Agua Fria Freeway  
Phoenix, AZ 85027

October 30, 2020

Dustin Wagoner  
LDG Civil Engineering/Land Surveying  
8808 N. Central Ave.  
Suite 288  
Phoenix, AZ 85020

Dear Dustin:

*Project*                      *Commercial Project – Church*  
                                     *7100 N. Mockingbird Ln.*  
                                     *Paradise Valley, AZ 85253*

This letter is to confirm that Cox Communications is a licensed telecommunications operator for the Town of Paradise Valley in which this project resides. Cox Communications may be able to provide cable services or other required telecommunication services for this project; however, the final requirement of a service agreement will be necessary.

As you move forward with this project, please contact Matt Kuhn, Account Executive at (623) 328-4889 or [matt.kuhn@cox.com](mailto:matt.kuhn@cox.com) who will be able to assist you with all of your telecommunication needs.

If you have any questions, please feel free to contact me.

Sincerely,

*Annie Sandoval*

Annie Sandoval  
Cox Business  
623-328-2431



P.O. Box 53933  
Phoenix, Arizona 85072

October 22, 2020

ASCENSION LUTHERAN CHURCH, INC.,  
PARADISE VALLEY, ARIZONA, AN ARIZONA NON-PROFIT CORPORATION  
7100 N MOCKINGBIRD LN.,  
PARADISE VALLEY, AZ 85253

Re: 7100 N Mockingbird Ln

To Whom It Concerns,

The above referenced project is located in Arizona Public Service Company's electric service area. The Company extends its lines in accordance with the "Conditions Governing Extensions of Electric Distribution Lines and Services," Schedule 3, and the "Terms and Conditions for the Sale of Electric Service," Schedule 1, on file with the Arizona Corporation Commission at the time we begin installation of the electric facilities.

Application for the Company's electric service often involves construction of new facilities for various distances and costs depending upon customer's location, load size and load characteristics. With such variations, it is necessary to establish conditions under which Arizona Public Service will extend its facilities.

The enclosed policy governs the extension of overhead and underground electric facilities to customers whose requirements are deemed by Arizona Public Service to be usual and reasonable in nature.

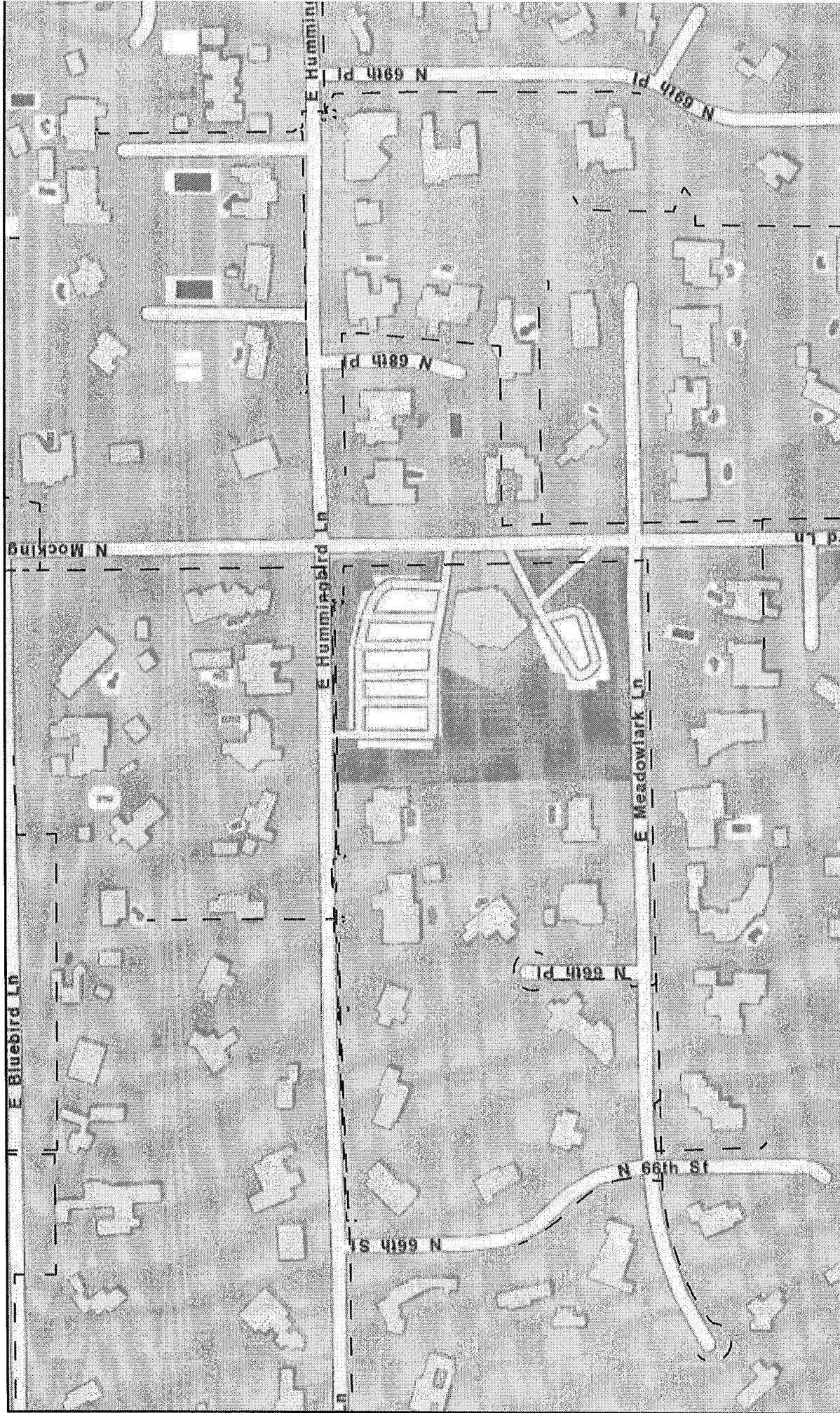
Please give Angela Rosenow call at (602) 250-1647 so that we may set up an appointment to discuss the details necessary for your project.

Sincerely,

*Angela Rosenow*

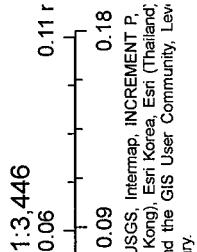
Angela Rosenow  
Customer Project Representative  
Customer Construction East \Enclosures

# Lumen Relo Utility Map



October 8, 2020

CLA	Non Owned Facilities	Level 3 Facilities	CTL Facilities	Local Fiber	Underground
— Aerial	— Aerial	— Aerial	— Aerial	— Aerial	— Aerial
- Underground	- Underground	- Underground	- Underground	- Underground	- Underground



Persons working in the area covered by this data must contact the statewide Call-Before-You-Dig System to ascertain the location of underground facilities prior to performing any excavation. Lumen Data is Highly Confidential and Lumen Data is Confidential and Proprietary.


Sources: Esri, HERE, Garmin, USGS, Intermap, INCREMENT P, Japan, METI, Esri China (Hong Kong), Esri Korea, Esri (Thailand), OpenStreetMap contributors, and the GIS User Community, Lumen Data is Confidential and Proprietary.



# Town of Paradise Valley



2/4/2021, 1:28:51 PM

— Paradise Valley Sewer Services  Parcels  
— Paradise Valley Gravity Main

1:2,670  
0 0.02 0.04 0.07 mi  
0 0.03 0.06 0.12 km