

Figure 4.1: Motorized Circulation Map

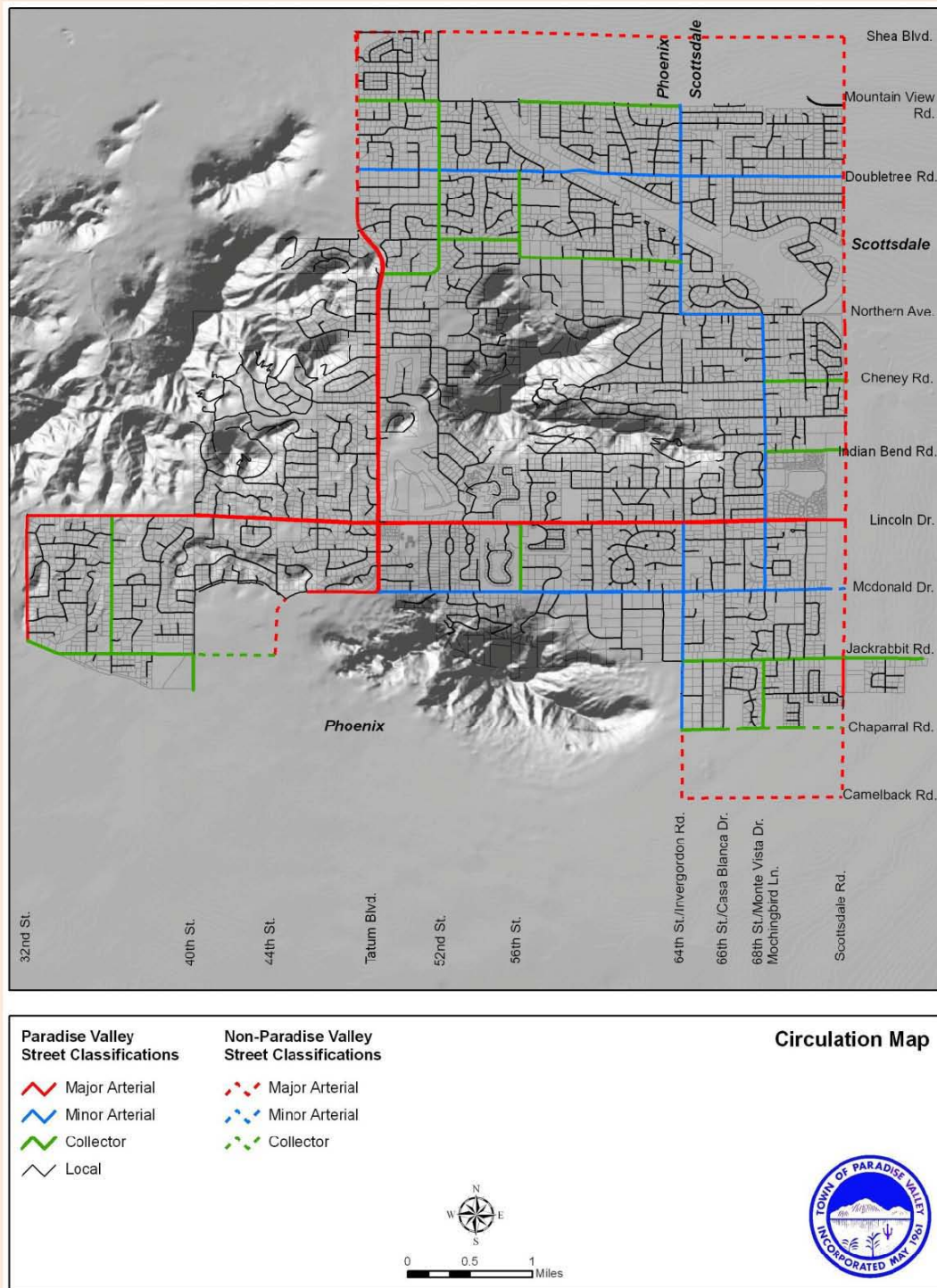


Table 4.1: Circulation Map Classifications and Standards

Classification	Function	Design Character (also see Cross-Sections)
Major Arterial	To provide regional unity and continuity.	<ul style="list-style-type: none"> ▪ Channelized intersections, limited access, crossings, and stops ▪ Parking on rights-of-way prohibited ▪ Landscaped medians and rights of way ▪ Optional sidewalks on both sides, set back a minimum of 5 feet from traffic lanes ▪ Bike lanes only where necessary to interconnect bikeway system ▪ 4 through lanes ▪ Full curbs and gutters ▪ 130-foot right-of-way
Minor Arterial	To serve as main feeder streets and provide linkages between major arterials.	<ul style="list-style-type: none"> ▪ Roundabouts encouraged for traffic control ▪ Stop signs, if necessary, posted on intersecting side streets ▪ Parking discouraged ▪ Optional 4' bicycle lanes on both sides ▪ Optional sidewalks on both sides, set back a minimum of 5 feet from traffic lanes ▪ Optional medians/center turn lanes ▪ 2 through lanes ▪ Full curbs and gutters ▪ 66- to 80-foot right-of-way (depending on median)
Collector	To serve as main interior streets with limited through traffic, and they provide linkages into and out of local streets.	<ul style="list-style-type: none"> ▪ Stop signs, if necessary, posted on intersecting side streets ▪ Optional 4' bicycle lanes on both sides ▪ Limited on-street parking ▪ Lighted signals not desirable ▪ Optional sidewalks on both sides, set back a minimum of 5 feet from traffic lanes ▪ 2 through lanes ▪ Curbs (vertical, rolled and ribbon) ▪ 60-foot right-of-way
Local	To serve as interior streets intended to limit through traffic and provide access to immediate residences and other properties	<ul style="list-style-type: none"> ▪ Without bicycle lanes ▪ Residential streets on the slopes of Mummy Mountain, Phoenix Mountain Preserve, and Camelback Mountain may be designed with variations to minimize cuts and fills. ▪ 2 through lanes ▪ 50-foot right-of-way <p>Local A</p> <ul style="list-style-type: none"> ▪ Curbs ▪ Optional sidewalks on one side of street <p>Local B</p> <ul style="list-style-type: none"> ▪ Curbs ▪ No sidewalks <p>Local C</p> <ul style="list-style-type: none"> ▪ No improved curbs and gutters ▪ No sidewalks

Figure 4.2: Typical Major Arterial Cross-Section

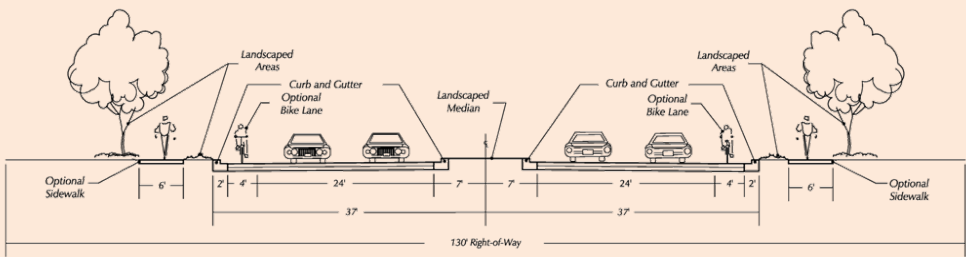


Figure 4.3: Typical Minor Arterial Cross-Section (With Median)

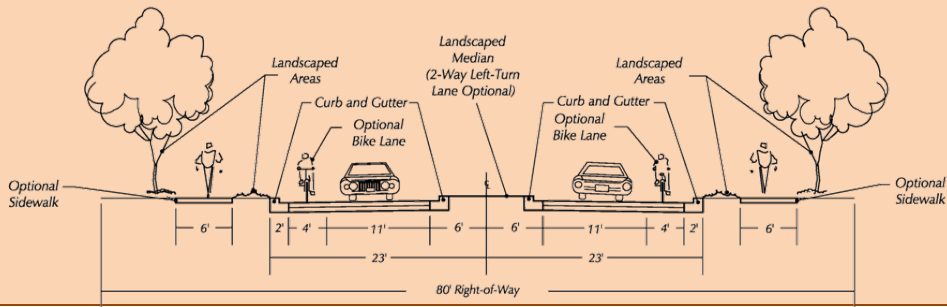


Figure 4.4: Typical Minor Arterial Cross-Section (Without Median)

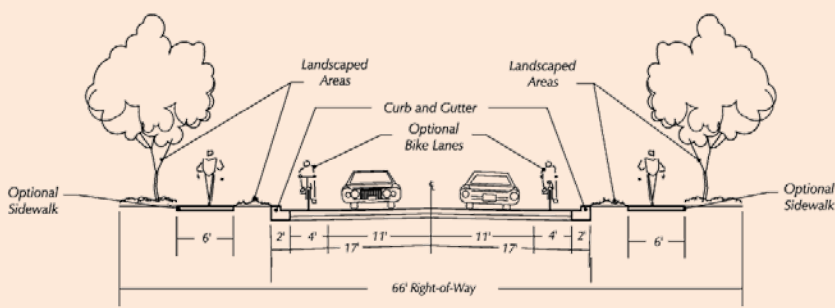


Figure 4.5: Typical Collector Cross-Section

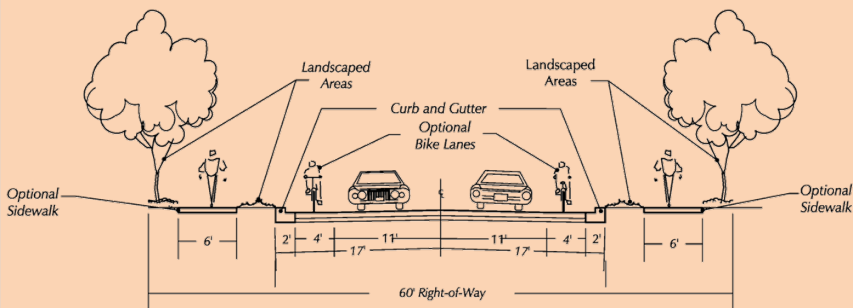


Figure 4.6: Typical Local Cross-Sections (Options A, B, and C)

