

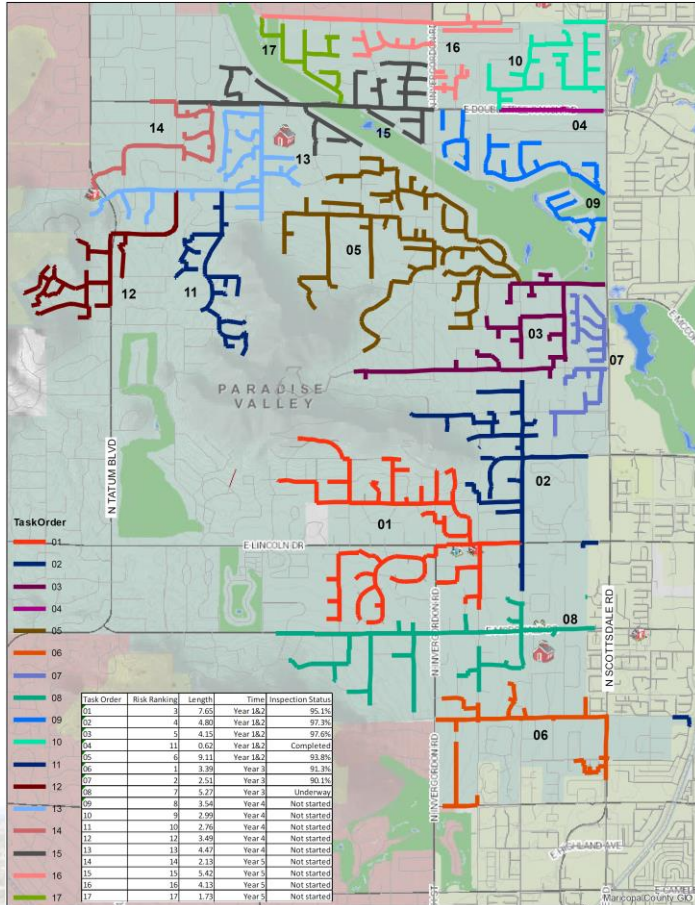
TOWN OF PARADISE VALLEY

Sanitary Sewer Repair Contract

June 11, 2020



SANITARY SEWER ASSESSMENT PROGRAM



Sewer Assessment Program

- Required per IGA with City of Scottsdale
- 5 Year Program with 17 Task Orders
- Currently in Year 4 of 5
- Making Repairs As Identified
- Pipes & Manholes Inspected, Videos Taken and Numerically Ranked
- Any Ductile Iron Pipe Identified to be Lined
- Consultation with City of Scottsdale
- Typical Defects Found
 - a. Offset Joints
 - b. Structural Pipe Defects
 - c. Manhole Corrosion
 - d. Buried Manholes & Cleanouts



PROJECT SCOPE

- Repair Structural Defects Identified By Sewer Assessment
 - Six Locations
 - 958' of Repairs
 - Approx. \$275,000 Repair Contract
 - Cooperative Use Contract with Achen Gardner Construction
 - Contract on June 25th Council Agenda
- Repair Process Includes:
 - Resident Notification
 - Pre-Installation Video & Cleaning
 - Bypass Pumping
 - Cast In Place Pipe (CIPP) Lining Technology
 - Restore Residential Connections



Liner Installation



CAST IN PLACE PIPE (CIPP) LINING INSTALLATION

4



UV Light Installation

Previous DIP Sewer Lining Projects

- FY18-19: 650'
- FY19-20: 2,618'
- FY20-21: 958'

- Maps of sewer lining locations and specifications prepared by sewer assessment consultant under separate contract



CAST IN PLACE PIPE (CIPP) LINING INSTALLATION ⁵



Pre-Lining



Post-Lining



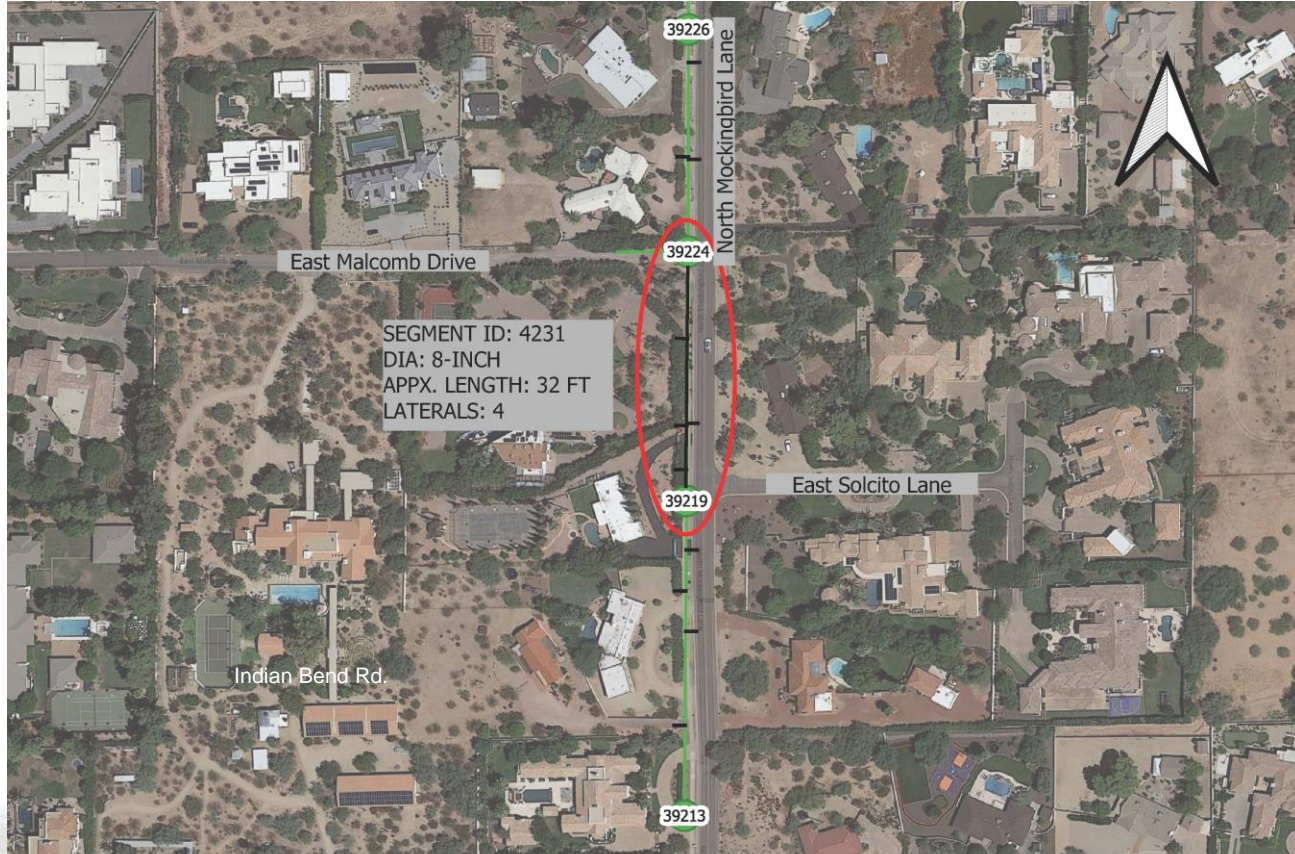
SAGUARO PL. SANITARY SEWER REPAIRS



SEGMENT 11023, MH 45268 TO MH 45274



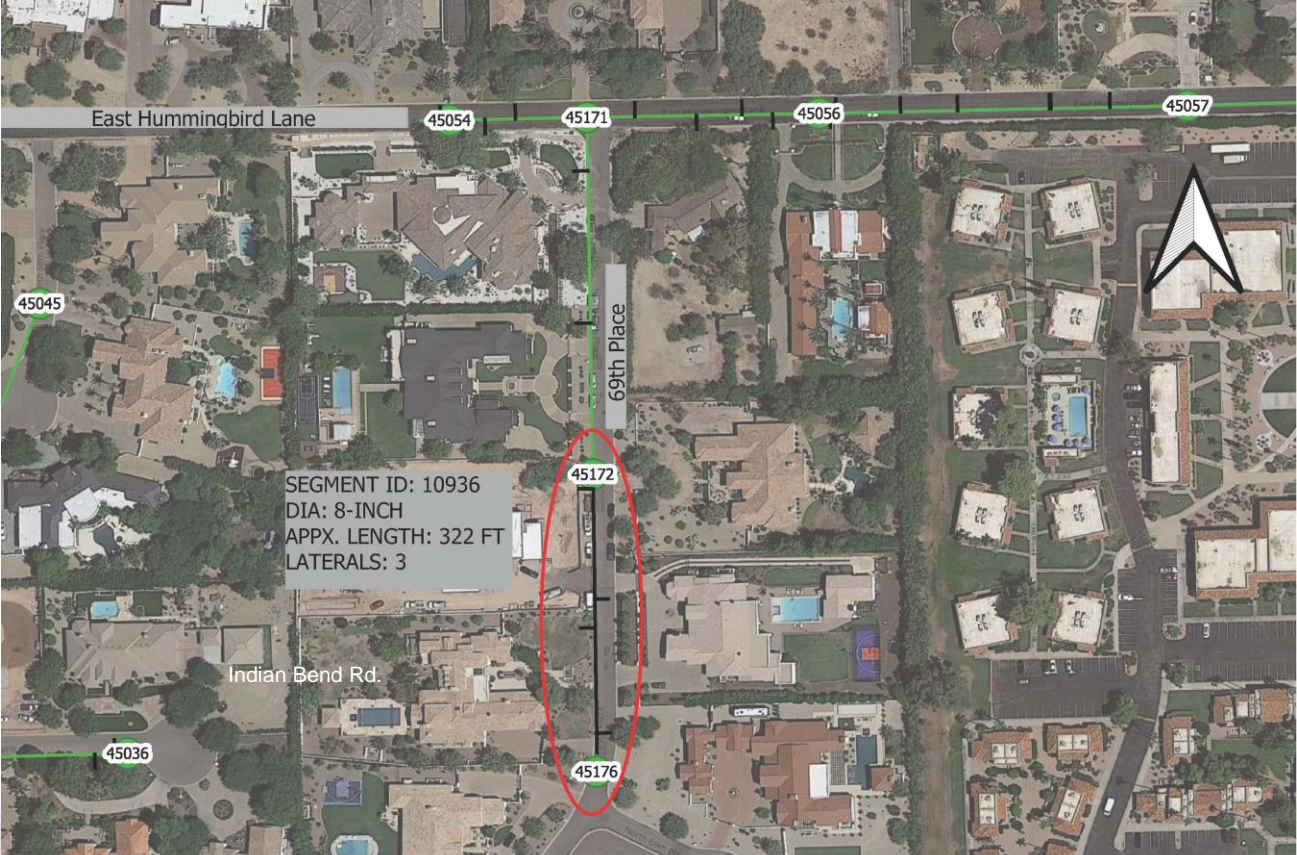
MOCKINGBIRD LN SANITARY SEWER REPAIRS



SEGMENT 4231, MH 39224 TO MH 39219



69TH PL SANITARY SEWER REPAIRS



SEGMENT ID: 10936
DIA: 8-INCH
APPX. LENGTH: 322 FT
LATERALS: 3

SEGMENT 10936, MH 45172 TO MH 45176



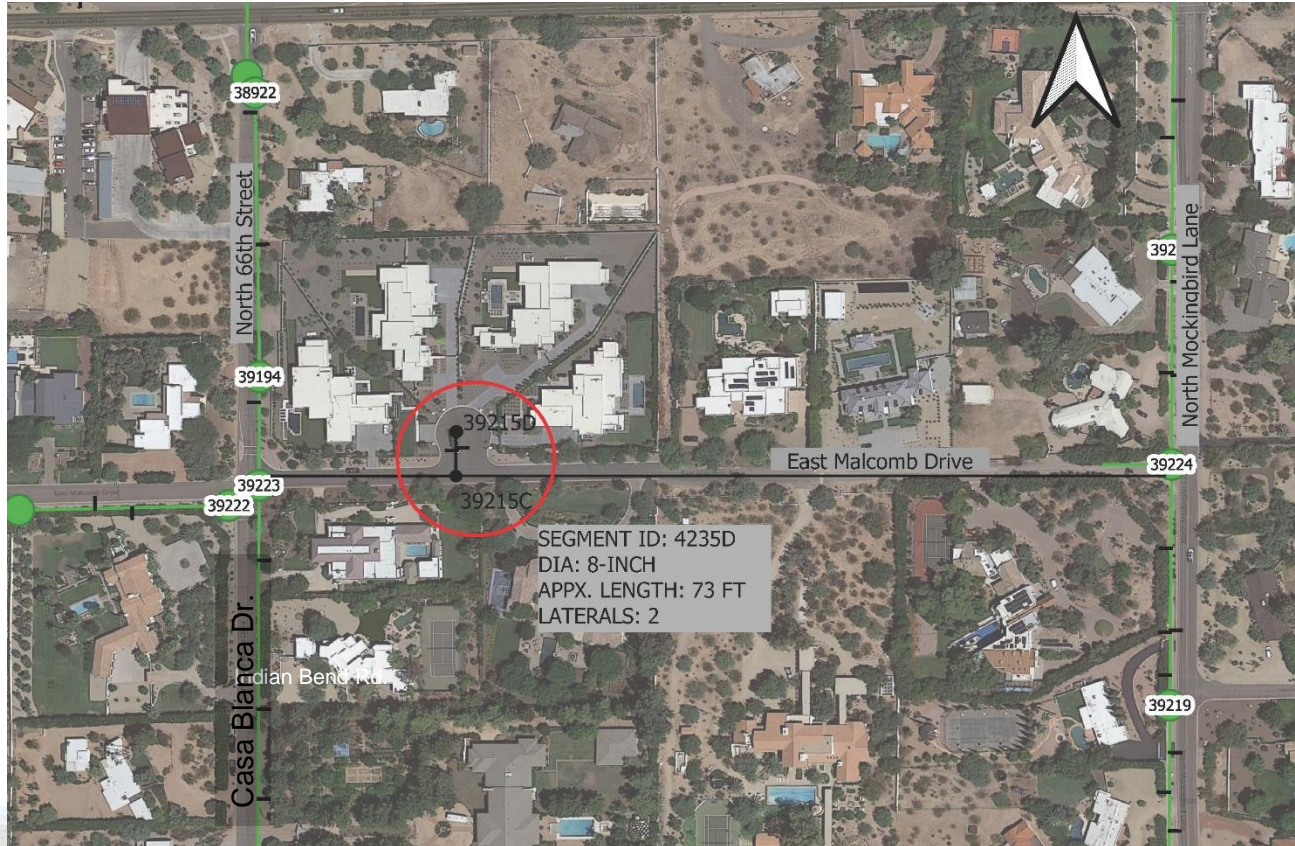
ROADRUNNER LN SANITARY SEWER REPAIRS



SEGMENT 14622, MH 48121 TO MH 48219



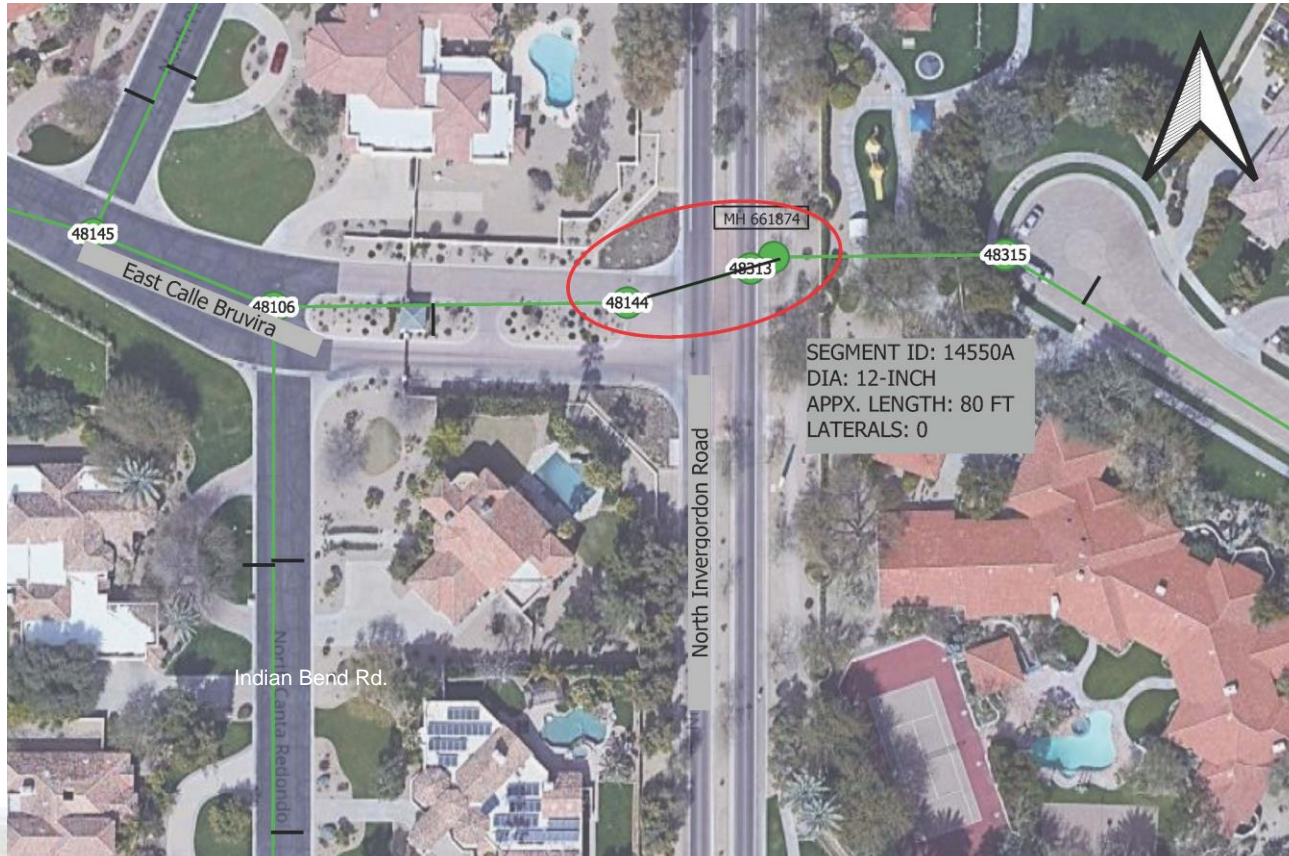
MALCOMB DR SANITARY SEWER REPAIRS



SEGMENT 4235D, MH 39215D TO MH 39215C



INVERGORDON RD SANITARY SEWER REPAIRS



SEGMENT ID: 14550A
DIA: 12-INCH
APPX. LENGTH: 80 FT
LATERALS: 0

SEGMENT 14550A, MH 48144 TO MH 661874



QUESTIONS?

