

# **TOWN OF PARADISE VALLEY**

**NewPath/Crown Castle Contract  
Town Council Meeting  
March 26, 2020**



# Key Questions

Should the Town move forward with an amendment to the NewPath/Crown Castle DAS agreement to allow for 2 extensions of the existing “Fiber Network” to provide backhaul to planned future AT&T cell antenna locations?



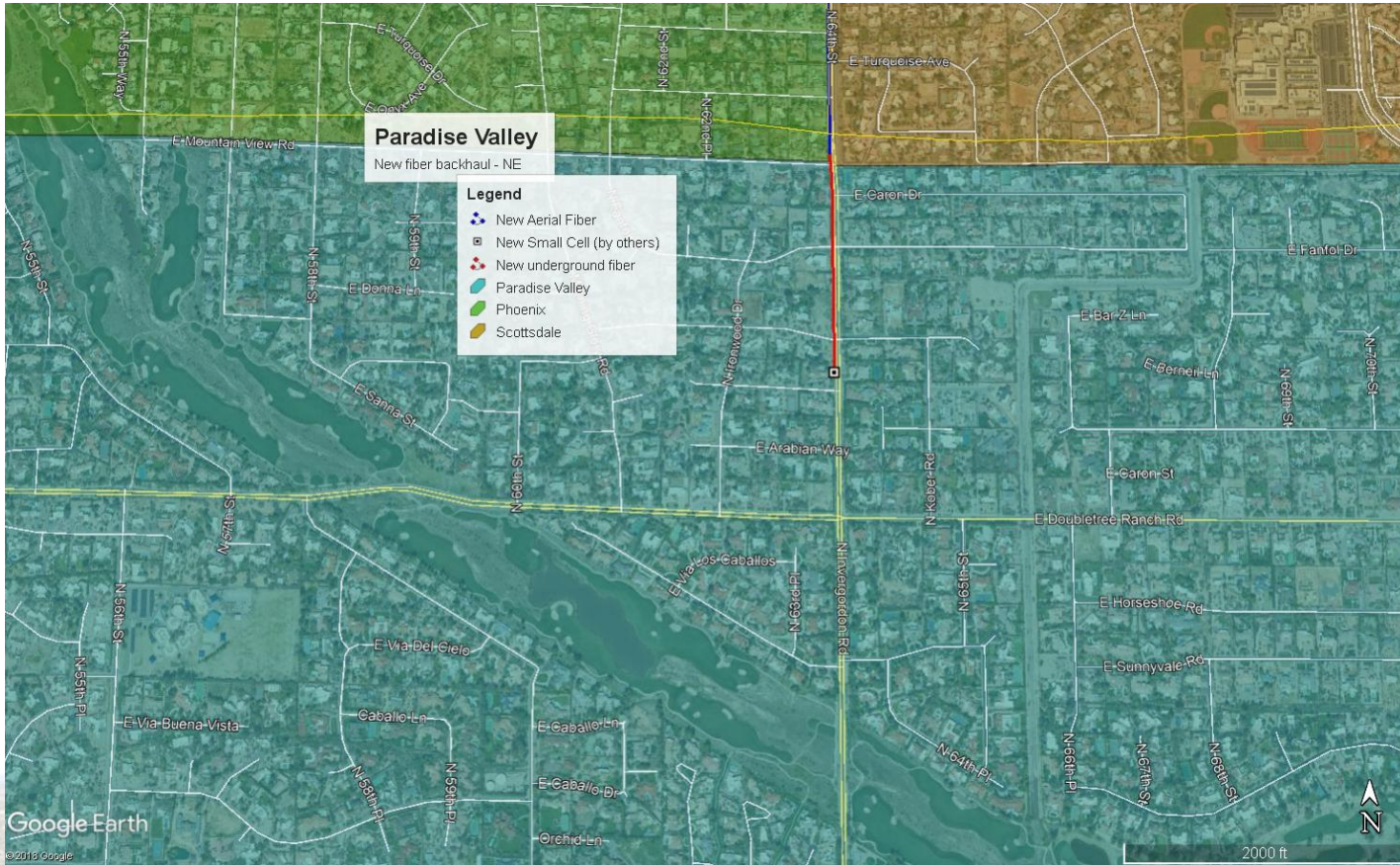
# Background – NewPath Request

- NewPath/Crown Castle agreement from 2010 provides for 42 small cell antenna nodes and miles of telecommunications fiber that connect the antennas to either a central switching station (installed in PW Yard for AT&T) or other switching stations
- The NewPath agreement grants the Town an “in-kind payment” for the telecommunications fiber that allows the Town to use 4 to 12 strands of the fiber network for the Town’s governmental needs
- The current agreement allows for the extension of fiber network so long as it is connecting to a small cell antenna node owned by Crown Castle
- Crown Castle has contacted the Town regarding amending the agreement to provide for the installation of additional fiber in Town ROW that will connect to 5 small cell antennas (with 1 in Scottsdale) that will be separately owned by AT&T, not Crown Castle
- The locations of the identified AT&T antennas (next 2 slides) would improve cell phone communications and coverage in PV, benefitting residents, guests, and businesses





# North Invergordon Road Area







# Current Developments

- NewPath has advised that the Town will receive benefits from its new fiber network:
  - Portions of the new fiber network are planned for attaching to cell antennas and will thus provide for better download speeds and increased capacity and bandwidth for cell services
  - Can be used for other high-speed communications needs of the Town or businesses in or that serve the Town
- Sales taxes are paid on the leasing of fiber for the “intrastate” leasing of the fiber, that is, for backhaul services



# Direction/Questions

Should the Town move forward with an amendment to the NewPath/Crown Castle DAS agreement to allow for 2 extensions of the existing “Fiber Network” to provide backhaul to planned future AT&T cell antenna locations?

