

TOWN OF PARADISE VALLEY

Crown Castle Statement of Direction SUP-20-03

Town Council Public Meeting

March 26, 2020



TODAY'S GOAL

- Review Draft SOD for Crown Castle Equipment Modification:
 - Upgrading equipment and screens at 3 streetlight pole locations
- Receive Council Input and Direction on Draft SOD



AGENDA

- Background
- Scope of Request
- Statement of Direction (SOD)
- Action



BACKGROUND

- 2010 - Crown Castle received SUP for Distributed Antenna System (DAS) in Town's right-of-way
- DAS consists of fiber-optic backbone that connects series of antenna nodes to improve system capacity and coverage
- DAS system consists of 42 signal antenna nodes:
 - 2 traffic signal nodes
 - 3 streetlight pole nodes
 - 37 faux cactus nodes
 - Each node has ground equipment such as fiber vault, electrical meter with disconnect, and faux rock battery backup

BACKGROUND

- 3/12 Work Study Session:
 - Commission must:
 - Evaluate location of underground utility locations and identify any conflicts
 - Examine visual mitigation options that will screen equipment cages and not result in additional project costs
 - Council noted they did not want amendment to slow down proposed improvements. Discussion that Town may examine additional/future visual mitigation options such as Town providing decorative screens around equipment cages

SCOPE OF REQUEST

- Upgrading equipment at 3 streetlight pole locations:
 - H219 – 7300 N. Tatum Blvd.
 - H228 – 6401 E. McDonald Dr.
 - H232 – 5395 N. Invergordon Rd.
- Relocate equipment & replace faux rock screen with concrete pad and 3' x 3' x 3' equipment cage
- New equipment cage consists of 1 solid panel and 3 mesh panels
- Mesh panels will vent heat generated by equipment and eliminate need for fan-cooled equipment
- Screens may be orientated in any direction and painted any color Town prefers

STATEMENT OF DIRECTION (SOD)

- Crown Castle SUP:
 - Aesthetic changes to approved antenna equipment or addition of new antenna nodes shall require an Intermediate Amendment to the SUP
 - Intermediate Amendment requires SOD
- SOD may address:
 - Uses
 - Lot Coverage/FAR
 - Scale/Massing
 - Setbacks
 - Heights
 - Circulation
 - Known issues

DRAFT SOD

- Planning Commission shall focus their review on review on and provide options on how to mitigate the visible effects amendment may have on the neighbors. In particular, PC shall focus their review on:

1. Equipment Cages/Screens. Equipment modification will improve service and will not change use of SUP. However, new cages/screens will change aesthetics. Commission shall evaluate color and/or type of material (such as rusted metal) of equipment screens/cages.

DRAFT SOD (CONT.)

2.Orientation, Location, and Mitigation. Planning

Commission shall: 1) evaluate location and orientation of equipment screens/cages and 2) identify how equipment cages can be visually mitigated. This includes identifying location of underground utilities and potential conflicts, identifying best location that will conceal screen/cage, and identifying appropriate orientation at each site (such as having solid portions of screen face street and/or locating the equipment to a less visible area).

DRAFT SOD (CONT.)

2.Orientation, Location, and Mitigation. However, costs associated with different mitigation factors must be considered. Commission shall provide effective and cost-efficient options that will visually mitigate new equipment cages and minimize project costs. This includes use vegetation around equipment cages/screens, evaluate if vegetation is needed at all 3 locations, and identity type, quantity, and location of all applicable plants.

DRAFT SOD (CONT.)

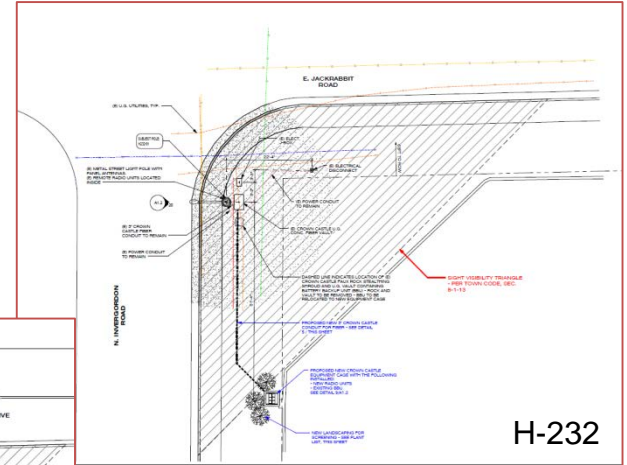
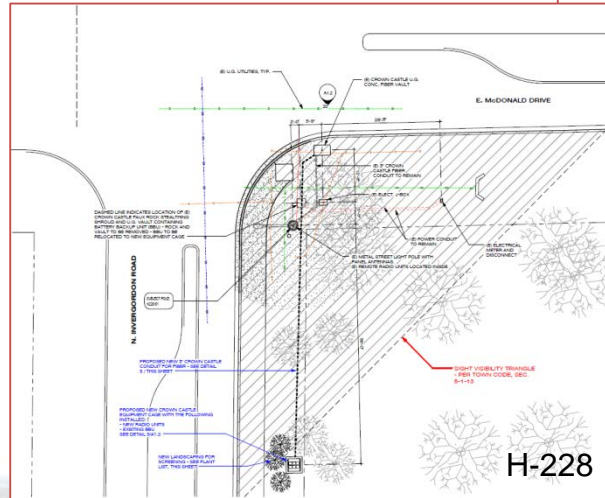
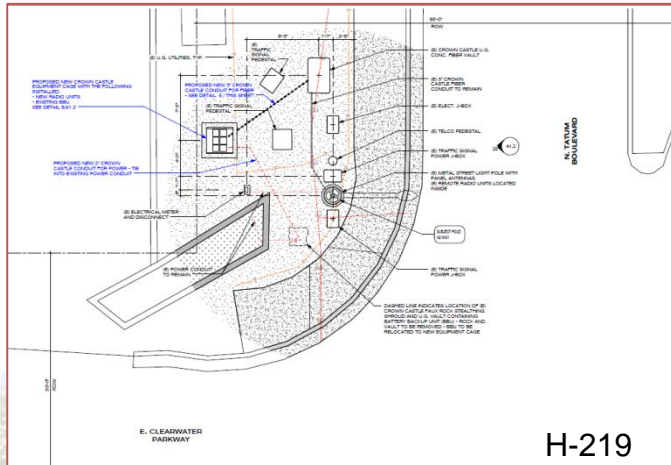
- Council must issue SOD within 45 days of first staff presentation:
 - Issue no later than April 26, 2020
- PC may request clarification and/or expansion of SOD based on additional information that has evolved
- Since request is not complex amendment, staff recommends PC complete their review by May 5, 2020

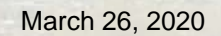
RECOMMENDATION

- Recommended that Council approve SOD for Crown Castle Intermediate SUP

TODAY'S GOAL

■ Review and Action on SOD

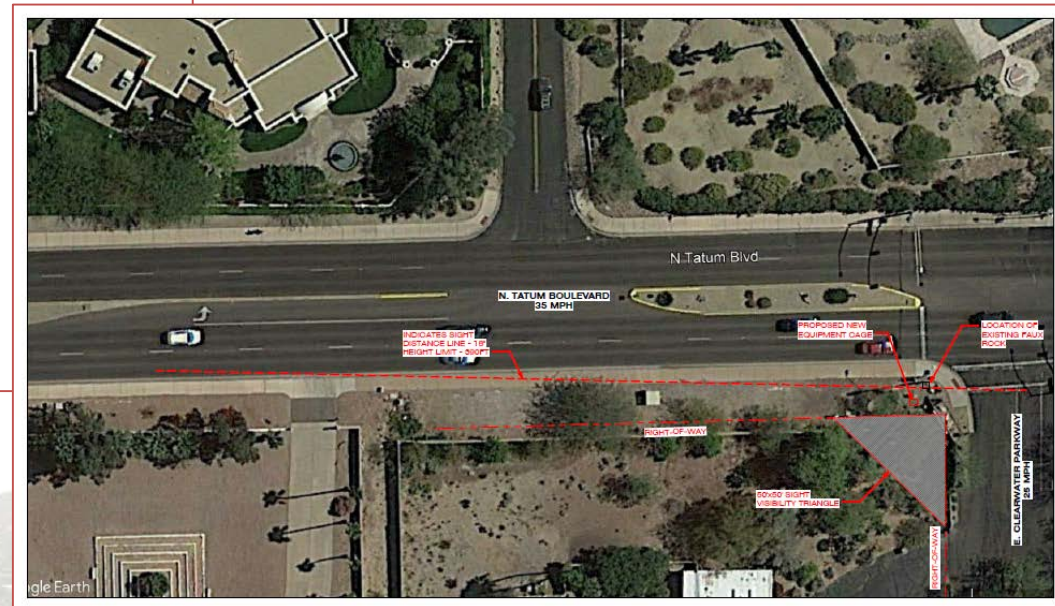




H219 – 7300 N TATUM BLVD

- Replace faux rock and relocate equipment from corner of Tatum Blvd and Clearwater Pkwy behind existing utility cabinets (next to existing wall)
- 3'x3'x3' equipment cage proposed (with 1 solid and 3 mesh panels)
- No proposed landscaping since partially screened by existing cabinets





Site Plans

FIGURE 10.10: STREET LIGHTING EQUIPMENT CASES

(A) PLAN VIEW

Dimensions: 2'-0" (width), 2'-0" (depth), 1'-0" (height).
 Components: (A) RADIUS, EQUIPMENT CASE, CONDUIT BLANK + 3/4" THICK, CONDUIT BLANK + 3/4" THICK, CONDUIT BLANK + 3/4" THICK, (B) POWER CONDUIT - 1/2" DIA., (C) POWER CONDUIT - 1/2" DIA., (D) POWER CONDUIT - 1/2" DIA.

(B) FRONT VIEW

Components: (A) RADIUS, CONDUIT BLANK + 3/4" THICK, (B) POWER CONDUIT - 1/2" DIA., (C) POWER CONDUIT - 1/2" DIA., (D) POWER CONDUIT - 1/2" DIA., (E) PROPOSED VIEW OF CHORDS, (F) PROPOSED VIEW OF CHORDS, (G) PROPOSED VIEW OF CHORDS.

(C) SIDE VIEW

Components: (A) RADIUS, CONDUIT BLANK + 3/4" THICK, (B) POWER CONDUIT - 1/2" DIA., (C) POWER CONDUIT - 1/2" DIA., (D) POWER CONDUIT - 1/2" DIA., (E) PROPOSED VIEW OF CHORDS, (F) PROPOSED VIEW OF CHORDS, (G) PROPOSED VIEW OF CHORDS.

EQUIPMENT CASE DETAILS

(A) PLAN VIEW

Dimensions: 2'-0" (width), 2'-0" (depth), 1'-0" (height).
 Components: (A) RADIUS, EQUIPMENT CASE, CONDUIT BLANK + 3/4" THICK, CONDUIT BLANK + 3/4" THICK, CONDUIT BLANK + 3/4" THICK, (B) POWER CONDUIT - 1/2" DIA., (C) POWER CONDUIT - 1/2" DIA., (D) POWER CONDUIT - 1/2" DIA.

(B) FRONT VIEW

Components: (A) RADIUS, CONDUIT BLANK + 3/4" THICK, (B) POWER CONDUIT - 1/2" DIA., (C) POWER CONDUIT - 1/2" DIA., (D) POWER CONDUIT - 1/2" DIA., (E) PROPOSED VIEW OF CHORDS, (F) PROPOSED VIEW OF CHORDS, (G) PROPOSED VIEW OF CHORDS.

(C) SIDE VIEW

Components: (A) RADIUS, CONDUIT BLANK + 3/4" THICK, (B) POWER CONDUIT - 1/2" DIA., (C) POWER CONDUIT - 1/2" DIA., (D) POWER CONDUIT - 1/2" DIA., (E) PROPOSED VIEW OF CHORDS, (F) PROPOSED VIEW OF CHORDS, (G) PROPOSED VIEW OF CHORDS.

NOTE: PROPOSED GROUND EQUIPMENT A NATIONAL ELECTRICAL CODE (NFPA) WILLIAMS SERVICE (UNDERGROUND) OR AS APPROVED BY CITY OF SCOTTSDALE.

SCALE: 1/4" = 1'-0"

(A) POLE LOCATION PHOTO (EXISTING)

SCALE: N.T.S.

(B) POLE LOCATION PHOTO SIMULATION (PROPOSED)

SCALE: N.T.S.

(C) POLE ELEVATION (EXISTING)

Components: (A) LUMINA STREET LIGHT POLE WITH PANEL, (B) REMOTE RADIO UNITS LOCATED INSIDE, (C) CHORDS CAPSULE POLE WITH CHORDS, (D) CHORDS CAPSULE POLE WITH CHORDS, (E) CHORDS CAPSULE POLE WITH CHORDS, (F) CHORDS CAPSULE POLE WITH CHORDS, (G) CHORDS CAPSULE POLE WITH CHORDS.

SCALE: 3/16" = 1'-0"

(D) POLE ELEVATION (PROPOSED)

Components: (A) LUMINA STREET LIGHT POLE WITH PANEL, (B) REMOTE RADIO UNITS LOCATED INSIDE, (C) CHORDS CAPSULE POLE WITH CHORDS, (D) CHORDS CAPSULE POLE WITH CHORDS, (E) CHORDS CAPSULE POLE WITH CHORDS, (F) CHORDS CAPSULE POLE WITH CHORDS, (G) CHORDS CAPSULE POLE WITH CHORDS.

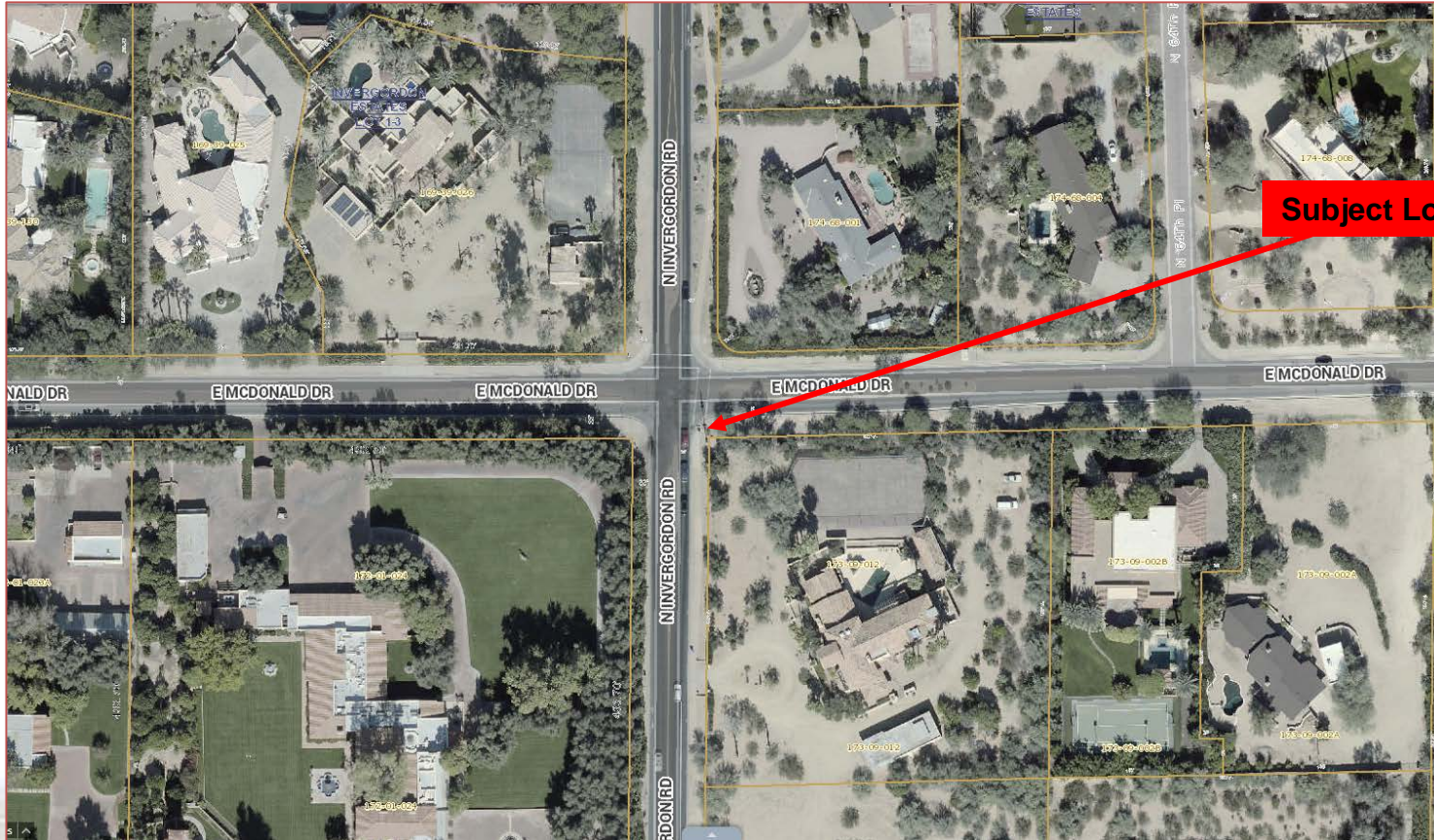
SCALE: 3/16" = 1'-0"

H219 – 7300 N TATUM BLVD

Site Photos



H228 – 6401 E MCDONALD DR



Subject Location

March 26, 2020



H228 – 6401 E McDONALD DR

- Replace faux rock and relocated equipment at corner of Invergordon Rd and McDonald Dr further south on Invergordon Rd
- Proposed:
 - 3'x3'x3' equipment cage (with 1 solid and 3 mesh panels)
 - 3 creosote bush



H228 – 6401 E MCDONALD DR

Photo Sims & Elevations



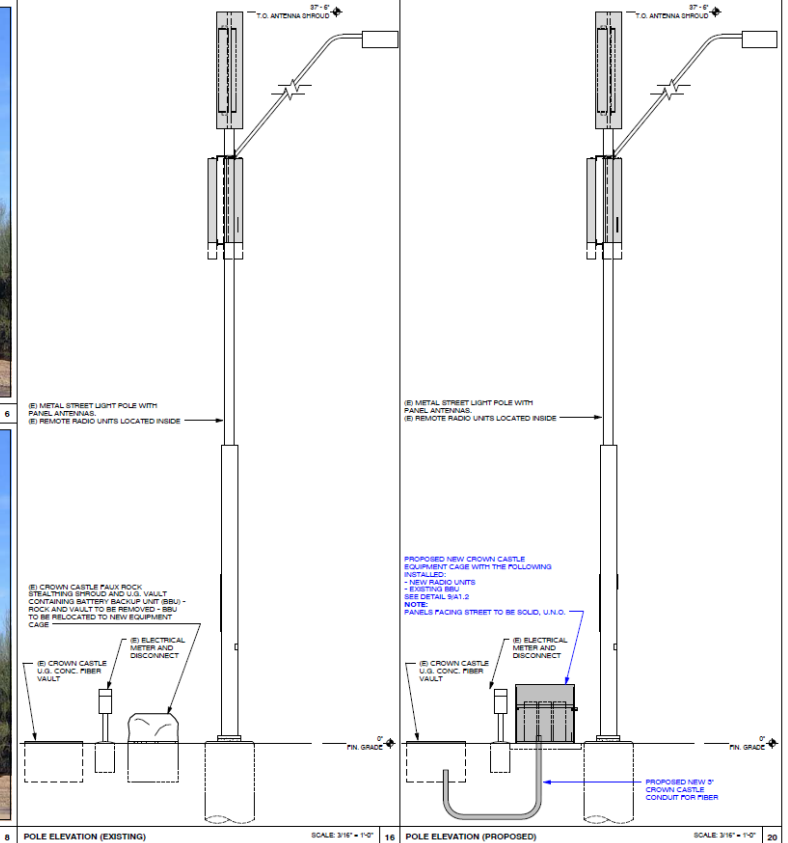
POLE LOCATION PHOTO (EXISTING)

SCALE: N.T.S. 8



POLE LOCATION PHOTO SIMULATION (PROPOSED)

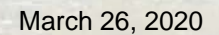
SCALE: N.T.S. 8



H228 – 6401 E MCDONALD DR

Site Photos





H232 – 5395 N INVERGORDON RD

- Replace faux rock and relocate equipment at corner of Invergordon Rd and Jackrabbit Rd further south on Invergordon Rd
- Proposed:
 - 3'x3'x3' equipment cage (with 1 solid and 3 mesh panels)
 - 3 creosote bush





H232 – 5395 N INVERGORDON RD

Photo Sims & Elevations



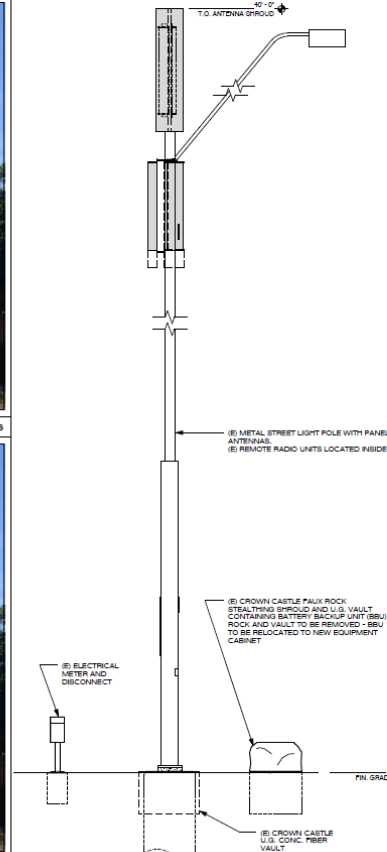
POLE LOCATION PHOTO (EXISTING)

SCALE: N.T.S. 8



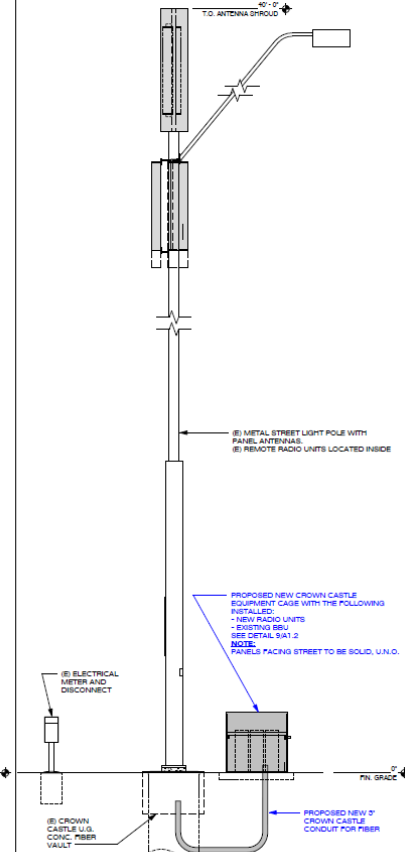
POLE LOCATION PHOTO SIMULATION (PROPOSED)

SCALE: N.T.S. 8



POLE ELEVATION (EXISTING)

SCALE: 3/16" = 1'-0" 16



POLE ELEVATION (PROPOSED)

SCALE: 3/16" = 1'-0" 20

H232 – 5395 N INVERGORDON RD

Site Photos

