

TOWN OF PARADISE VALLEY

Crown Castle Statement of Direction SUP-20-03

Town Coucil Work Session

March 12, 2020



TODAY'S GOAL

- Review Draft SOD for Crown Castle Equipment Modification:
 - Upgrading equipment and screens at 3 streetlight pole locations
- Receive Council Input and Direction on Draft SOD



AGENDA

- Background
- Scope of Request
- Statement of Direction (SOD)
- Next Steps



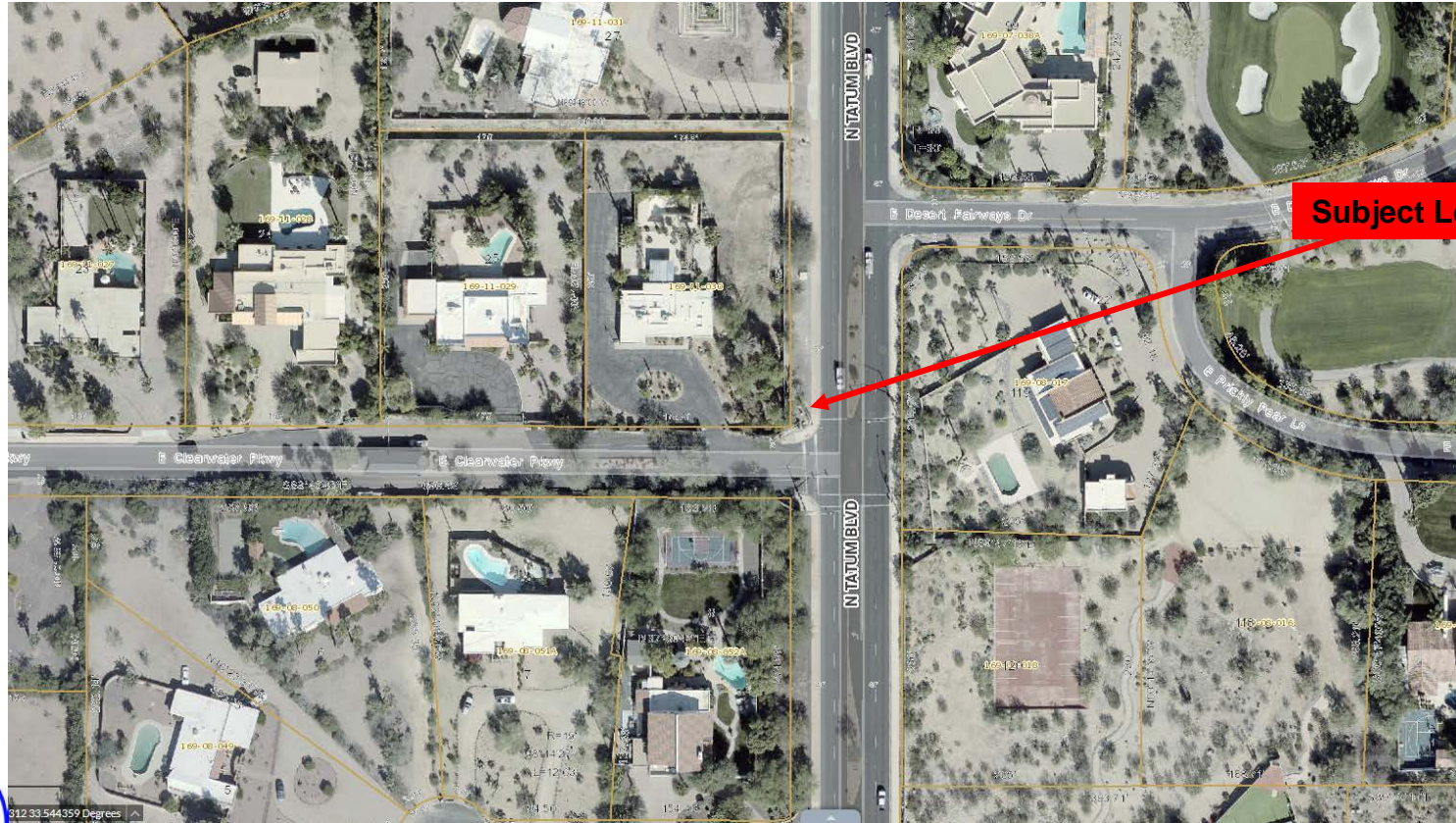
BACKGROUND

- 2010 - Crown Castle received SUP for Distributed Antenna System (DAS) in Town's right-of-way
- DAS consists of fiber-optic backbone that connects series of antenna nodes to improve system capacity and coverage
- DAS system consists of 42 signal antenna nodes:
 - 2 traffic signal nodes
 - 3 streetlight pole nodes
 - 37 faux cactus nodes
 - Each node has ground equipment such as fiber vault, electrical meter with disconnect, and faux rock battery backup

SCOPE OF REQUEST

- Upgrading equipment at 3 streetlight pole locations:
 - H219 – 7300 N. Tatum Blvd.
 - H228 – 6401 E. McDonald Dr.
 - H232 – 5395 N. Invergordon Rd.
- Relocate equipment & replace faux rock screen with concrete pad and 3' x 3' x 3' equipment cage
- New equipment cage consists of 1 solid panel and 3 mesh panels
- Mesh panels will vent heat generated by equipment and eliminate need for fan-cooled equipment
- Screens may be orientated in any direction and painted any color Town prefers

H219 – 7300 N TATUM BLVD



Subject Location

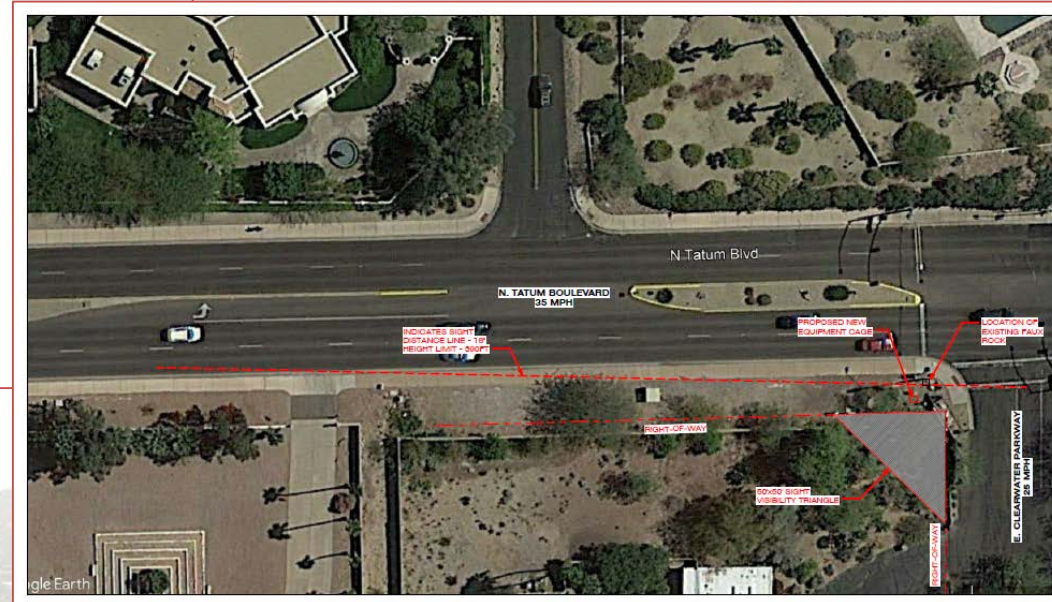
March 12, 2020



H219 – 7300 N TATUM BLVD

- Replace faux rock and relocate equipment from corner of Tatum Blvd and Clearwater Pkwy behind existing utility cabinets (next to existing wall)
- 3'x3'x3' equipment cage proposed (with 1 solid and 3 mesh panels)
- Staff recommends decorative screen instead of cage
- No proposed landscaping since partially screened by existing cabinets





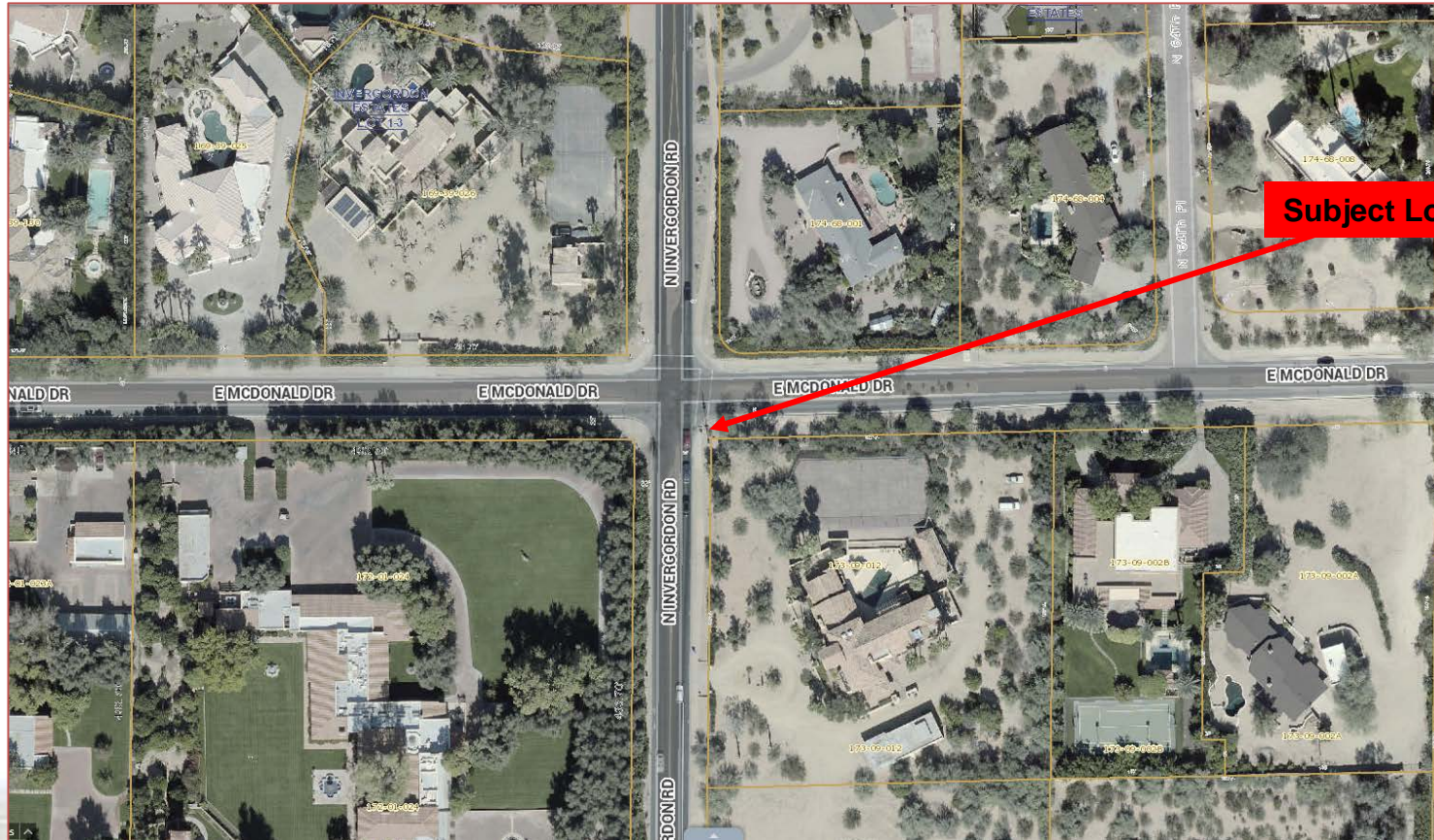
[illegible]

H219 – 7300 N TATUM BLVD

Site Photos



H228 – 6401 E MCDONALD DR



Subject Location

March 12, 2020

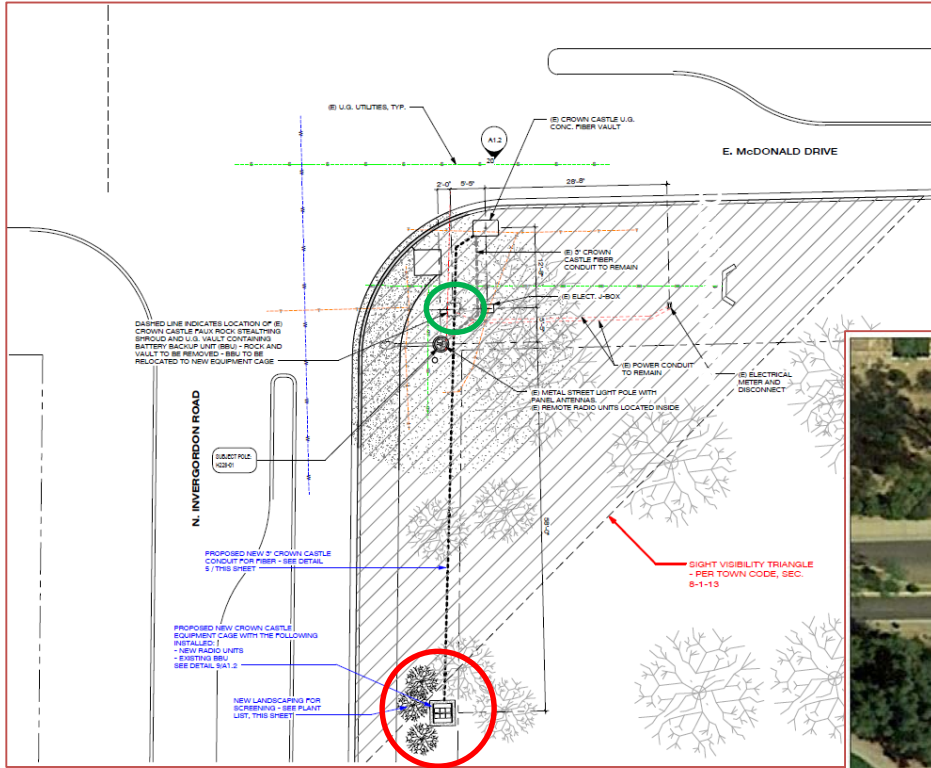


H228 – 6401 E McDONALD DR

- Replace faux rock and relocated equipment at corner of Invergordon Rd and McDonald Dr further south on Invergordon Rd
- Proposed:
 - 3'x3'x3' equipment cage (with 1 solid and 3 mesh panels)
 - 3 creosote bush
- Staff recommends decorative screen instead of cage



H228 – 6401 E MCDONALD DR



Site Plans



H228 – 6401 E MCDONALD DR

Photo Sims & Elevations



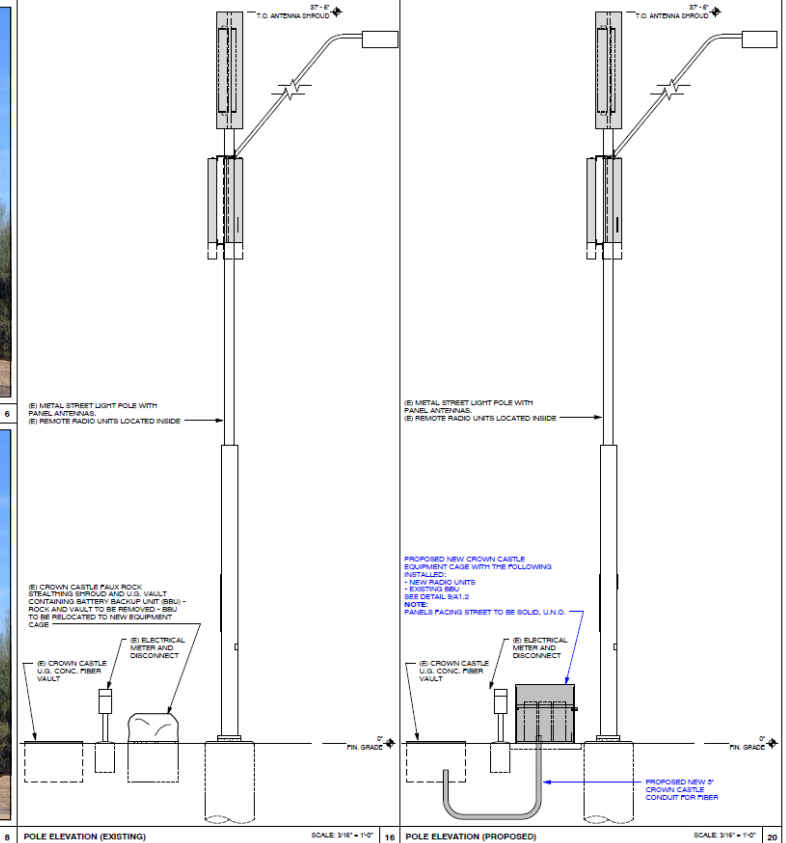
POLE LOCATION PHOTO (EXISTING)

SCALE: N.T.S. 8



POLE LOCATION PHOTO SIMULATION (PROPOSED)

SCALE: N.T.S. 8



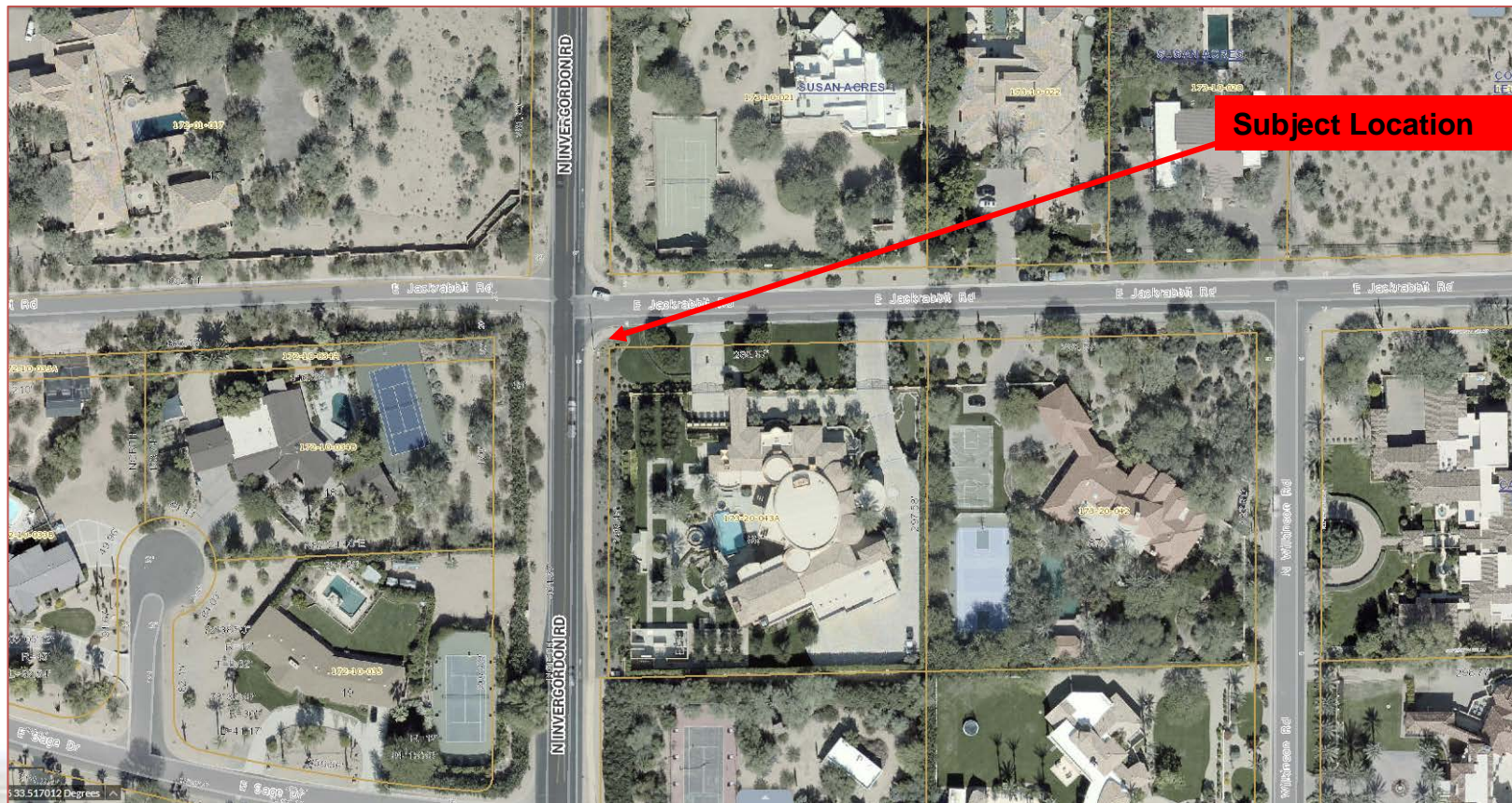
H228 – 6401 E MCDONALD DR

Site Photos



H232 – 5395 N INVERGORDON RD

16



Subject Location



March 12, 2020

H232 – 5395 N INVERGORDON RD

- Replace faux rock and relocate equipment at corner of Invergordon Rd and Jackrabbit Rd further south on Invergordon Rd
- Proposed:
 - 3'x3'x3' equipment cage (with 1 solid and 3 mesh panels)
 - 3 creosote bush
- Staff recommends decorative screen instead of cage





H232 – 5395 N INVERGORDON RD

Photo Sims & Elevations



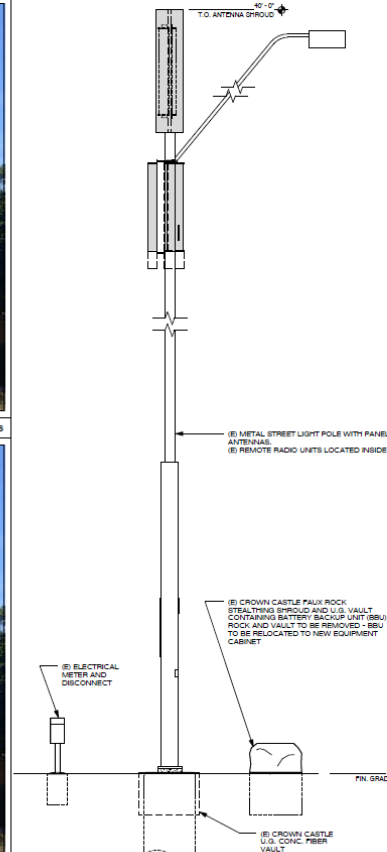
POLE LOCATION PHOTO (EXISTING)

SCALE: N.T.S. 8



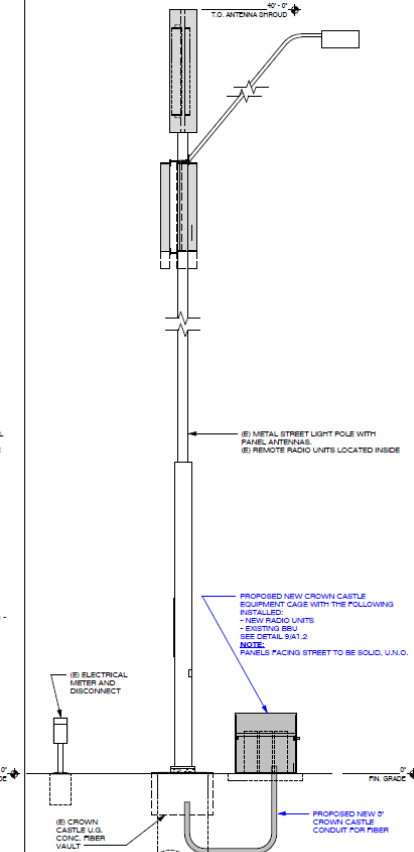
POLE LOCATION PHOTO SIMULATION (PROPOSED)

SCALE: N.T.S. 8



POLE ELEVATION (EXISTING)

SCALE: 3/16" = 1'-0"



POLE ELEVATION (PROPOSED)

SCALE: 3/16" = 1'-0"

H232 – 5395 N INVERGORDON RD

Site Photos



STATEMENT OF DIRECTION (SOD)

- Crown Castle SUP:
 - Aesthetic changes to approved antenna equipment or addition of new antenna nodes shall require an Intermediate Amendment to the SUP
 - Intermediate Amendment requires SOD
- SOD may address:
 - Uses
 - Lot Coverage/FAR
 - Scale/Massing
 - Setbacks
 - Heights
 - Circulation
 - Known issues

DRAFT SOD

- Planning Commission shall focus their review on visible effects amendment may have on the neighbors. In particular, PC shall focus their review on:

1. Equipment Cages/Screens. Equipment modification will not change the use of the SUP. However, new cages/screens will change aesthetics. PC shall evaluate use of decorative screens vs. proposed equipment cages. This includes, but is not limited to, the color, type of material (such as rusted metal) and/or potential design (such as a screen with a mountain motif/theme, etc.) of equipment screens/cages

DRAFT SOD (CONT.)

- Planning Commission shall focus their review on visible effects amendment may have on the neighbors. In particular, PC shall focus their review on:

2.Orientation, Location, and Vegetation. PC shall evaluate location and orientation of equipment screens/cages. This will identify best location that will conceal screen/cage and appropriate orientation at each site (such as having the solid portions of screen face the street and/or locating equipment to a less visible area). Commission shall also evaluate if vegetation is need at all 3 location and identity the type, quantity, and location of all applicable plants

DRAFT SOD (CONT.)

- Council must issue SOD within 45 days of first staff presentation:
 - Issue no later than April 26, 2020
- PC may request clarification and/or expansion of SOD based on additional information that has evolved
- Since request is not complex amendment, staff recommends PC complete their review by May 5, 2020

NEXT STEPS

- Staff will incorporate any requested changes into SOD
- Present updated SOD for review and action at March 26th meeting

TODAY'S GOAL

- TC input on draft SOD
- Next Steps:
 - March 26th Work Study/Action

