

Town Hall Remodel

Project Update

Canopy Shade Study

October 24, 2019

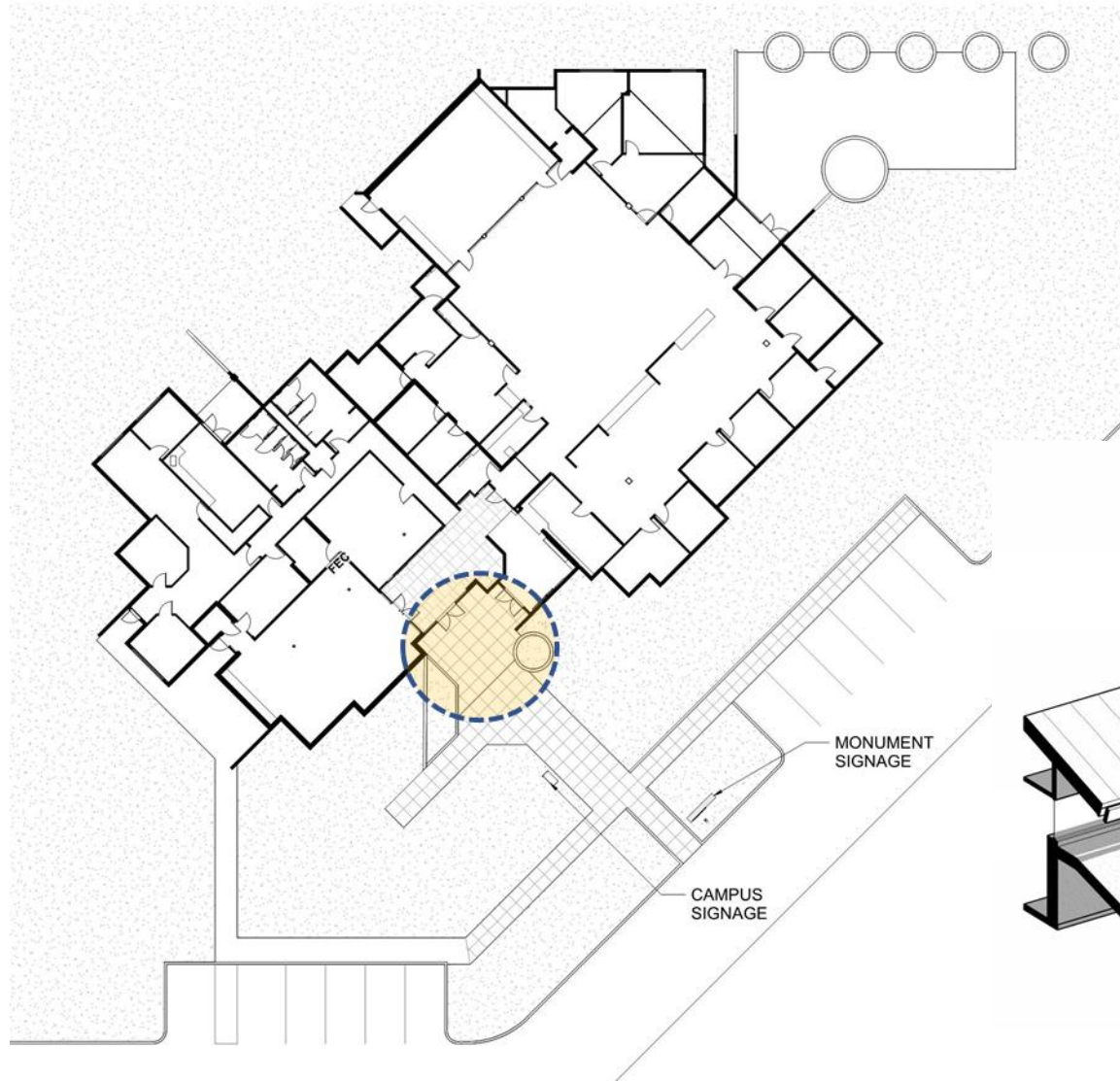


Agenda

Follow up from Sept 26, 2019 Study Session

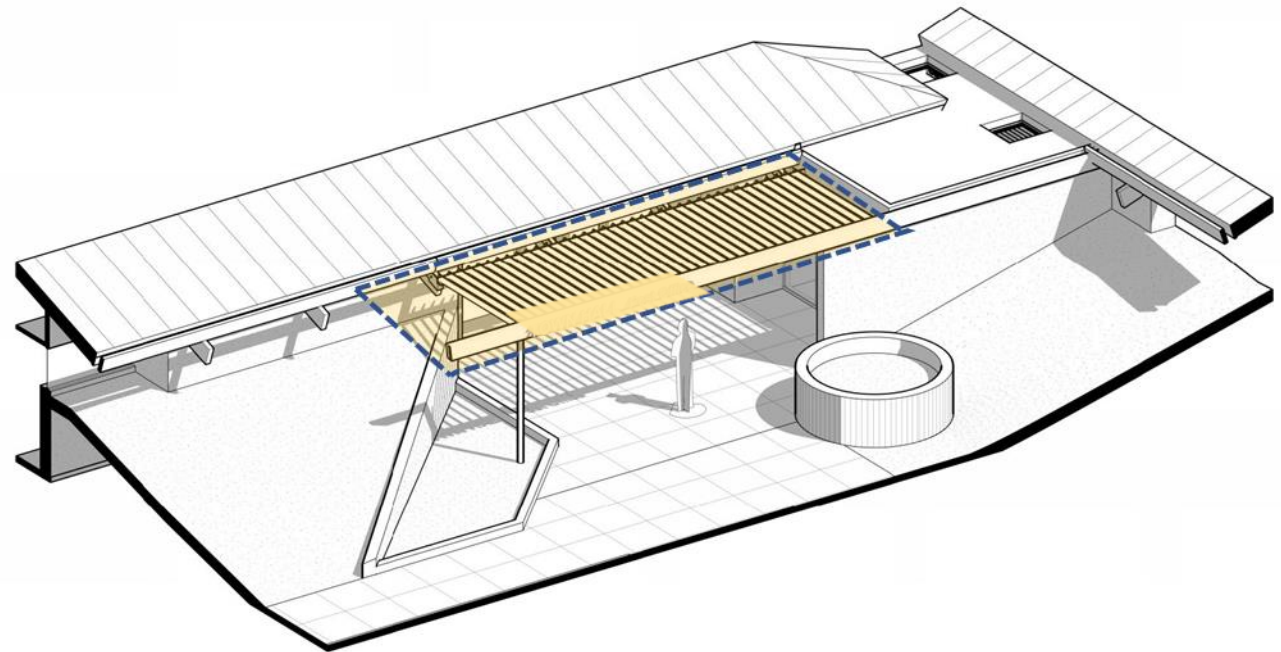
1. Shade Study for Proposed Canopy at New Entry
2. Considerations
3. Schedule





Entry
"Canopy"

\$20k



Canopy Considerations

- Canopy Shade Study (see separate handout)
 - Summer – Door handle, heat, user experience
 - Fall/Spring – similar to above
- Canopy
 - Cantilever v. Post
 - Post Location
- Garden Wall
 - Existing Material
 - Proposed Material
- Hardscape
 - Plaza Area
 - Finish (match existing v. new look)



Canopy Shade Study

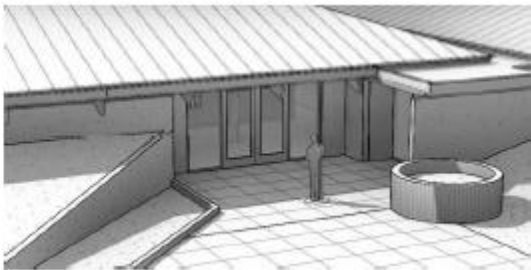
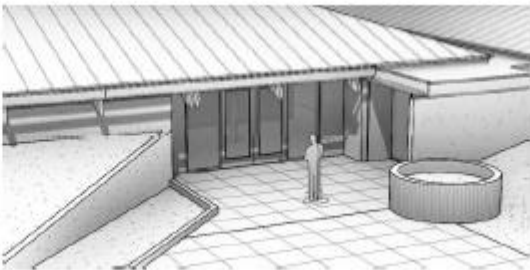
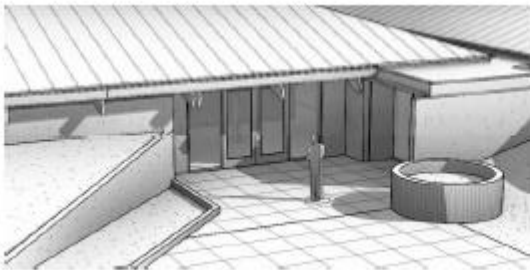
SUMMER
SOLSTICE

Without Shade

8:00 A.M.

NOON

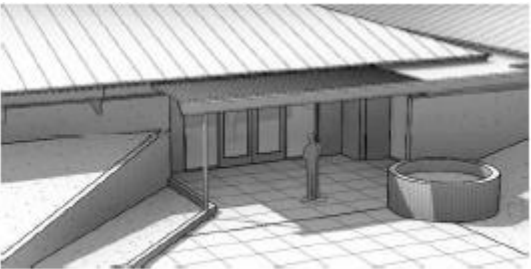
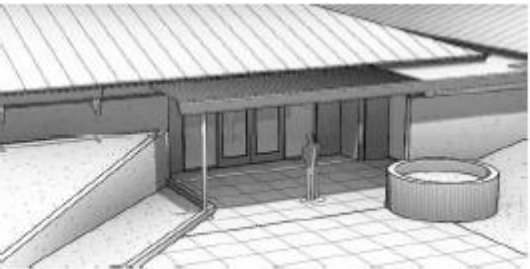
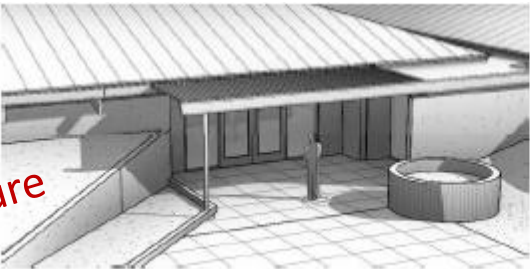
4:00 P.M.



SUMMER
SOLSTICE

June 21

With Shade Structure



Canopy Shade Study

WINTER
SOLSTICE

Without Shade

WINTER
SOLSTICE

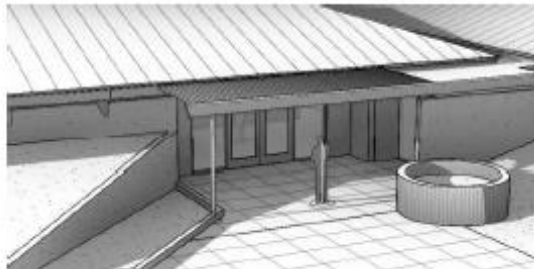
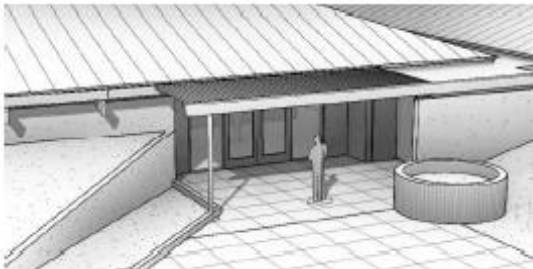
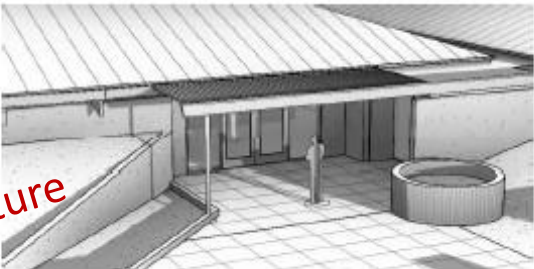
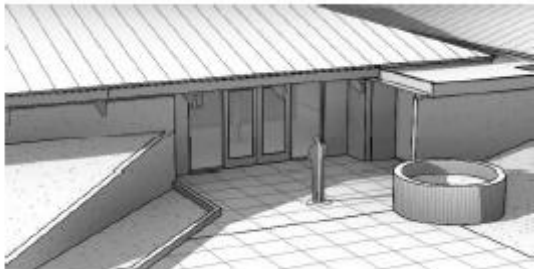
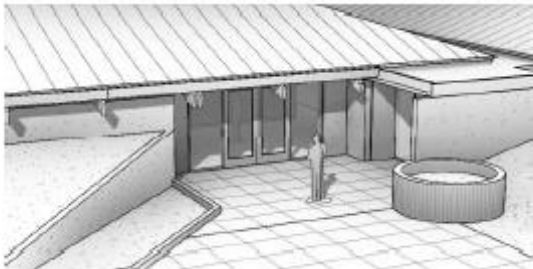
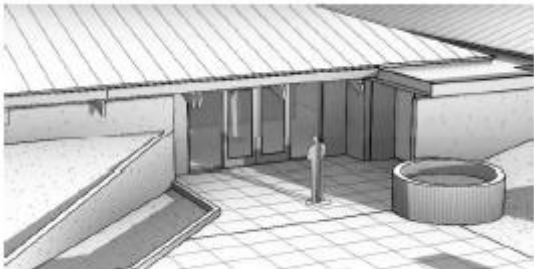
December 21

With Shade Structure

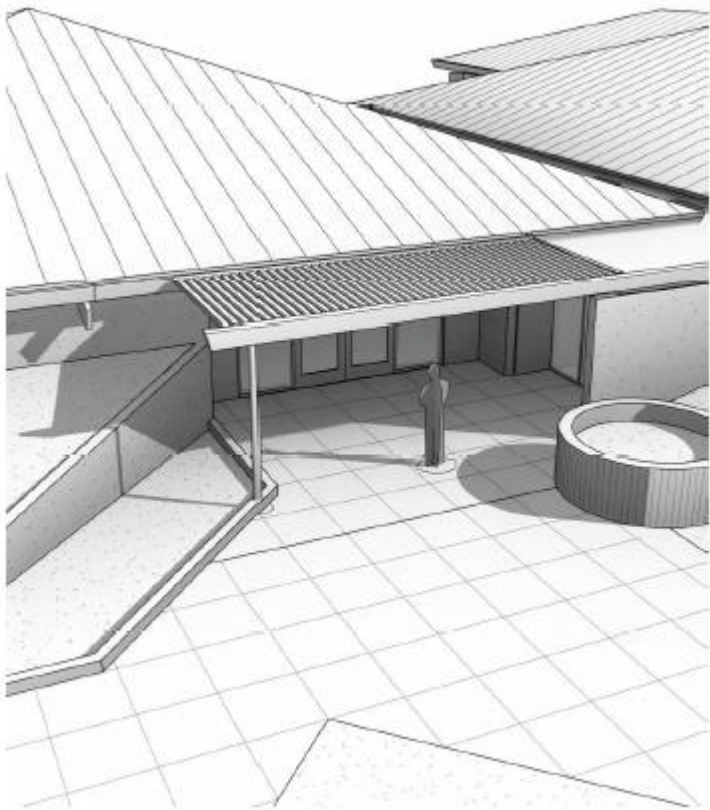
8:00 A.M.

NOON

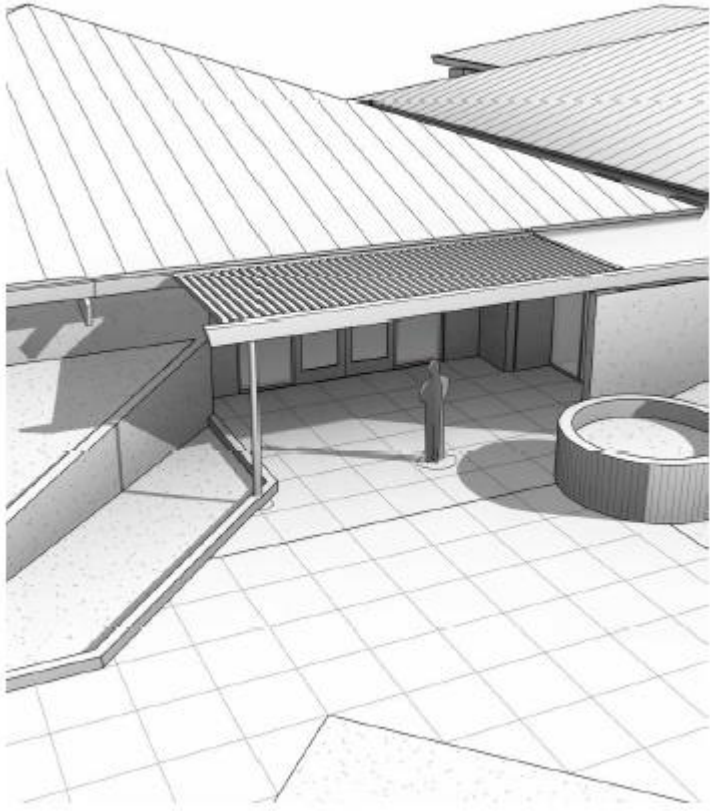
4:00 P.M.



Canopy Post Location



Rose Garden Wall



Schedule

- Nov 7 Council Direction
- Nov 8 Begin Construction
- Dec 27 End Construction



Town Hall Remodel

Questions and Discussion

