

# Town Hall Remodel

## Project Update

September 26, 2019



# Agenda

## Overview of Sept 12, 2019 Study Session

1. On-Site Consideration of 3 Options for PVMPT Sculpture
  - Landscape Area Left of Entry Plaza Selected for Further Design and Cost Estimates (TBD)
  - Mock up of proposed sculpture available for Council/Public viewing immediately prior to Study Session
  - Plaza Considerations
2. Informal Discussion of Town Hall Remodel and Opportunity to Expose Beams
  - Schematic Designs developed for Council consideration
  - Costs of each alternative (TBD)
3. Office Furniture
4. Shade Structure Previously Approved

## Schedule



# 1. Consideration of Sculpture Location at Town Hall Front Entry



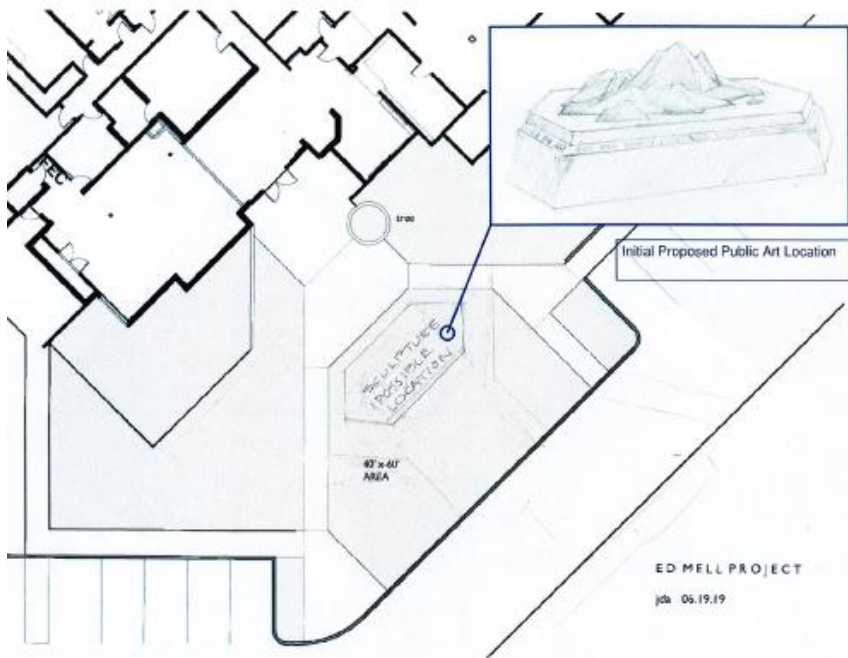
Ed Mell Conceptual  
Sculpture



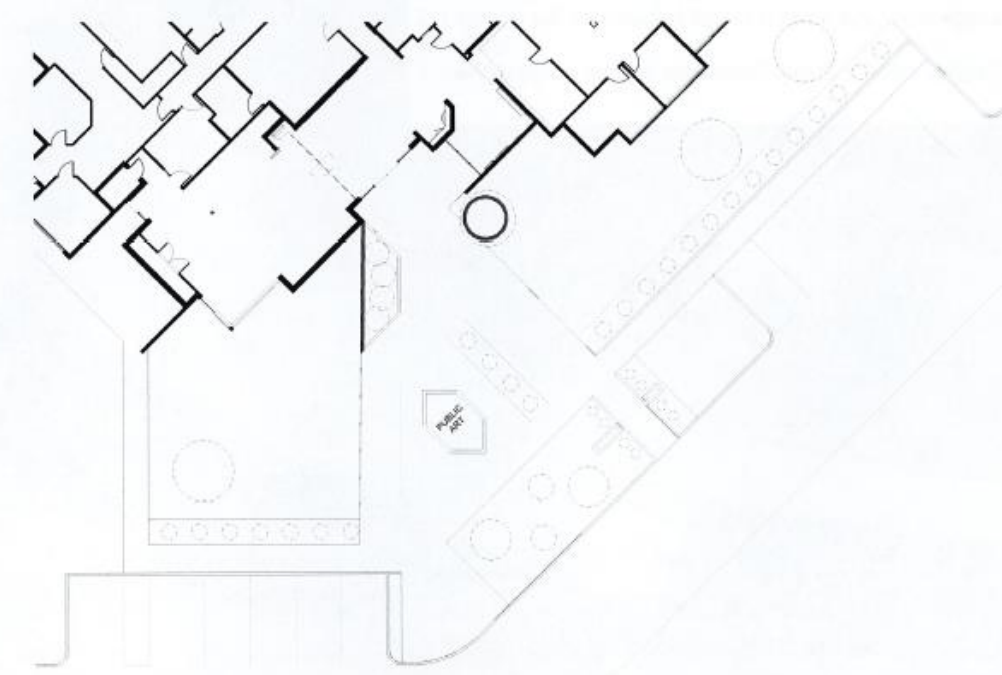
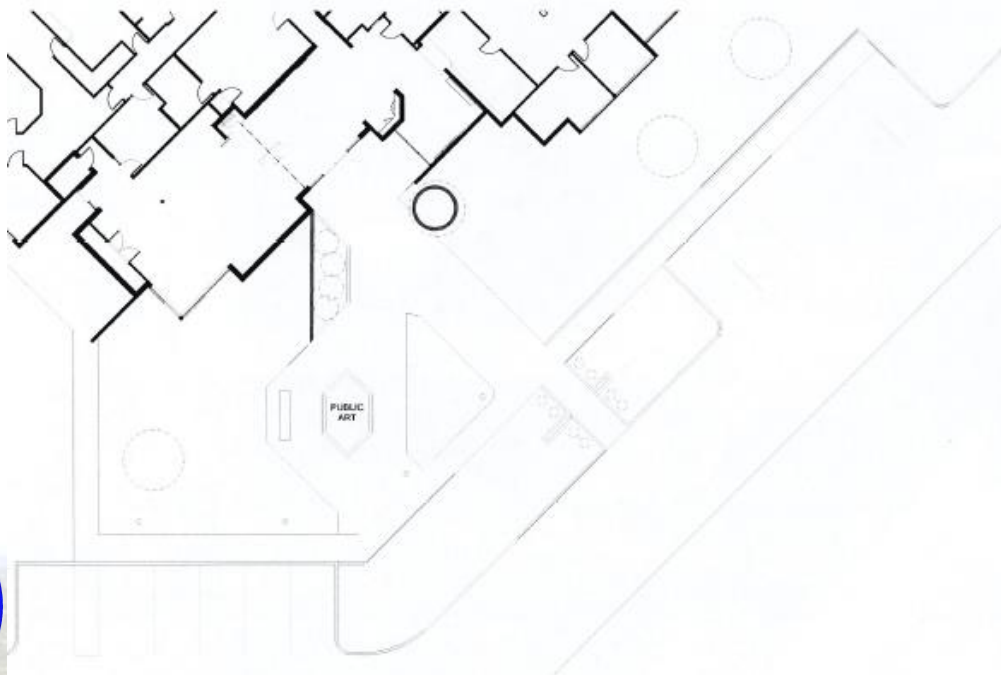








3 Additional  
Layouts  
considered for  
Council  
selected area



# Exterior Plaza Considerations

- Existing entry holds about 4” of water before overflowing into parking lot.
  - Low intensity rain – retention basin
  - High intensity rain – parking lot
- Lighting
  - Type(s)
  - Location
- Landscaping
- Hardscape
  - Area
  - Finish (match existing v. new look)
- Art
  - Location
  - Dimensions
  - Schedule



## 2. Exposed Beam Ceiling

### Informal Discussion of Town Hall Remodel and Opportunity to Expose Beams

- Schematic Designs developed for Council consideration
- Costs included for each alternative (TBD)

### Schedule





# Exposed Beam Ceiling Options

Acoustic Tile Ceiling



Exposed Beams with Concealed Ductwork



Exposed Beams with Exposed New Ductwork & Longer North Soffit



Partition Closed



Partition Open

Base with no change:  
\$574k

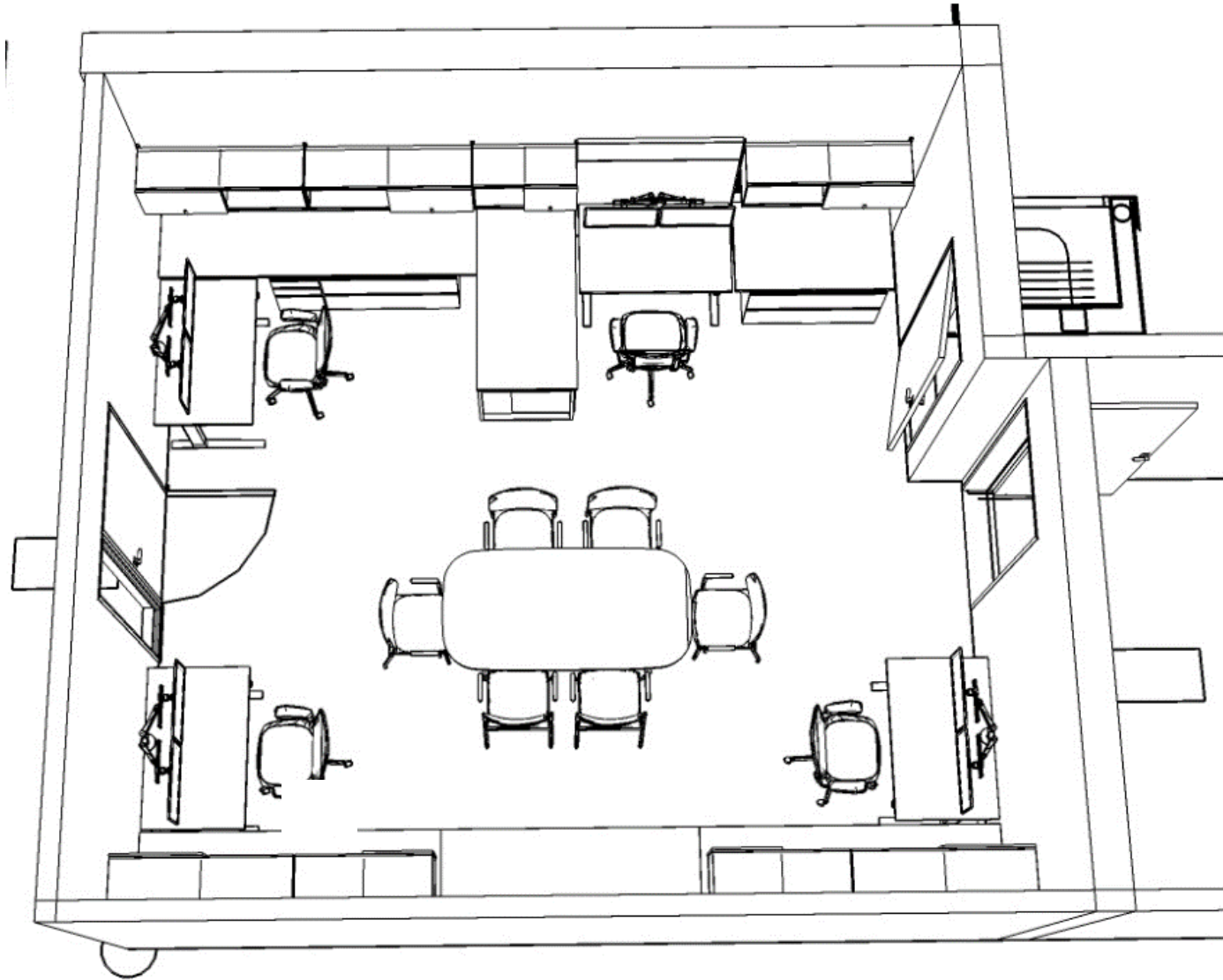
Exposed Beams with  
Ductwork in Soffit:  
Add \$ TBD

Exposed Beams and Ductwork:  
Add \$ TBD



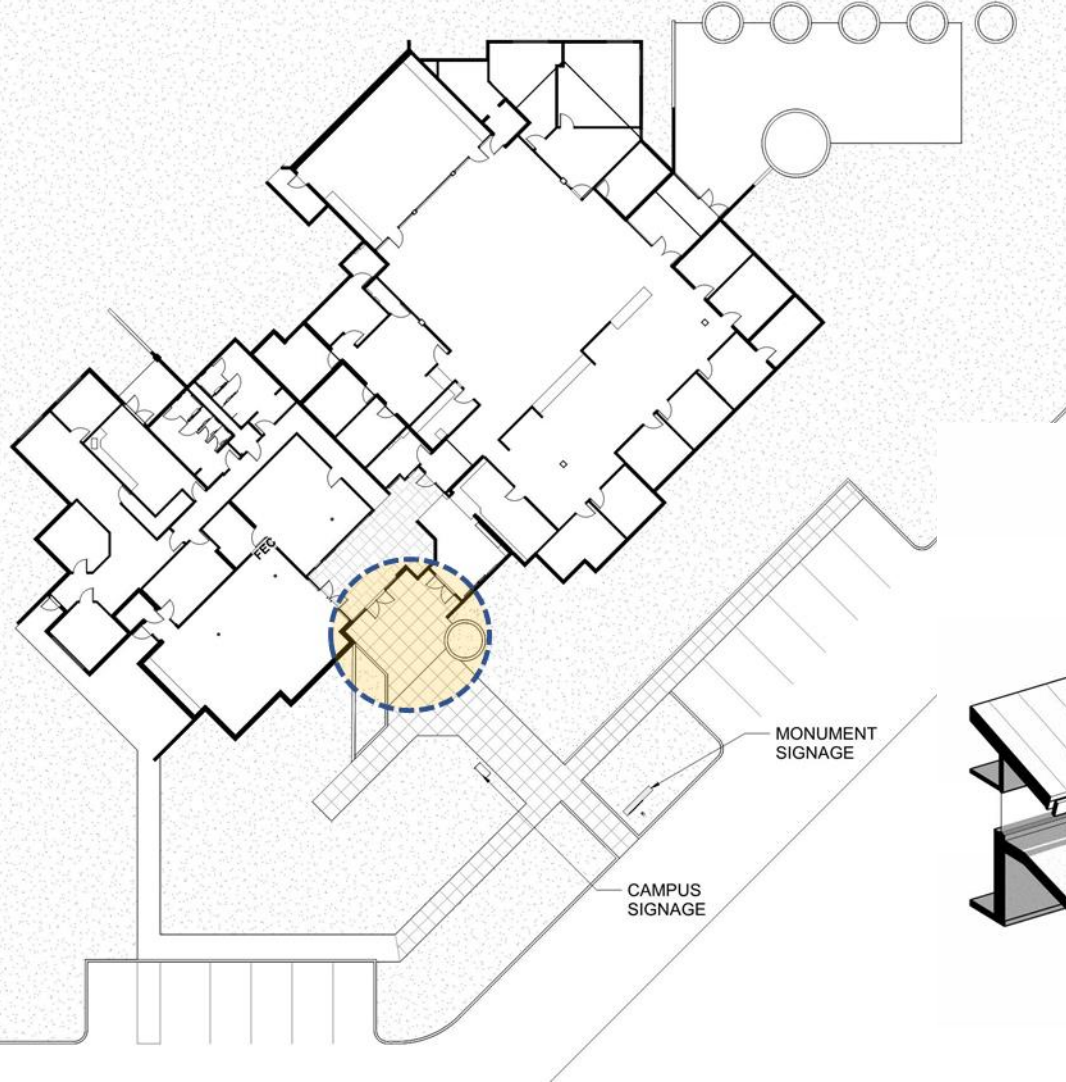






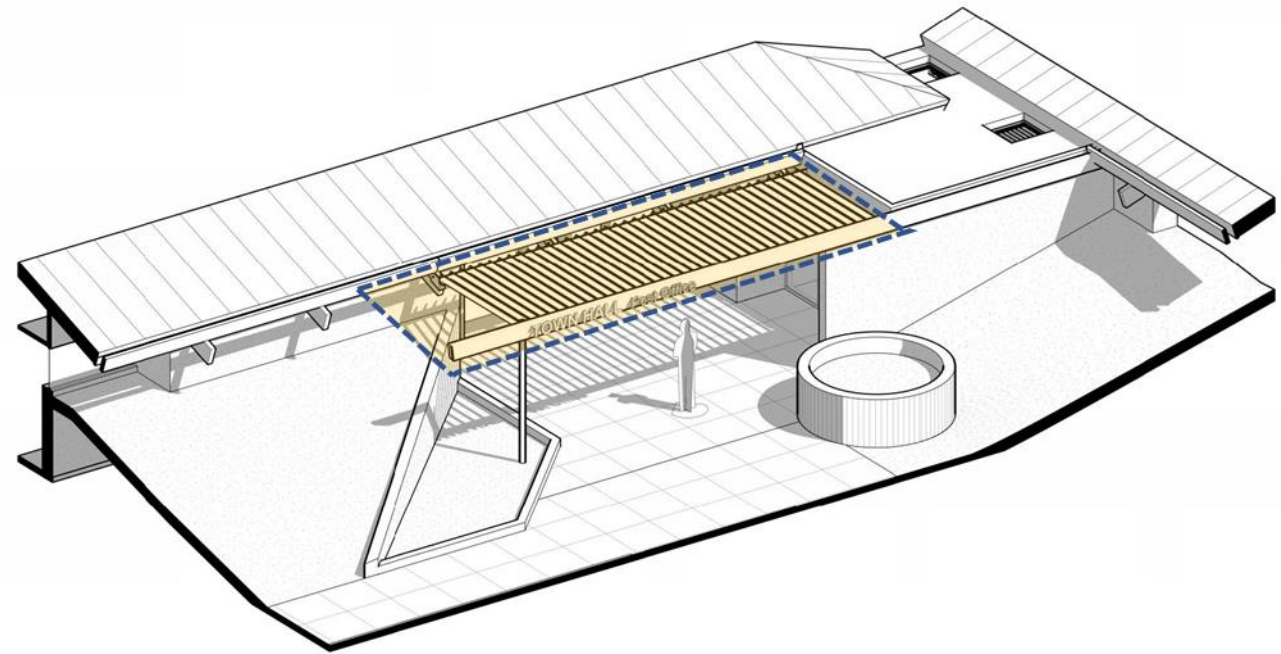
Open Office  
layout

## 4. Shade Structure Previously Approved



Entry  
“Canopy”

\$20k





# Cost Summary

- Budget (Exterior)
  - \$10k Design (surveying, drainage design, stakeholder coordination); DWL CO#2
  - \$10k Retention Basin and Landscape Restoration; Solicit 3-quotes
  - \$TBD Construction (concrete removal/replacement, new planter wall, seating); CORE CO#1
  - (\$20,000) Previously Approved Shade Structure
- Budget (Interior)
  - \$TBD Exposed Beam Ceiling; CORE CO#2
  - \$20k Office Furniture; Goodmans



# Council Discussion and Selection of Items

1. PVMPT Sculpture and Installation of Entry Plaza (Change Order)
2. Change Order for Exposed Beam Ceiling in Community Room
3. Office Furniture Separate Contract
4. Shade Structure Previously Approved



# Schedule

- Sept 12 Initial Concepts
- Sept 26 Council Action
- Nov 1 Begin Construction
- Dec 27 End Construction





# Town Hall Remodel

Questions and Discussion

