



[EXISTING TO BE REMOVED] ELEVATION - SCALE: 1/4" = 1'-0"

A D/F INTERNALLY-ILLUMINATED MONUMENT STRUCTURE W/ZIP TRACK SYSTEM

SCALE: 1/2" = 1'-0" 88.88 SQ.FT. TOTAL PER SIGN FACE/SIDE

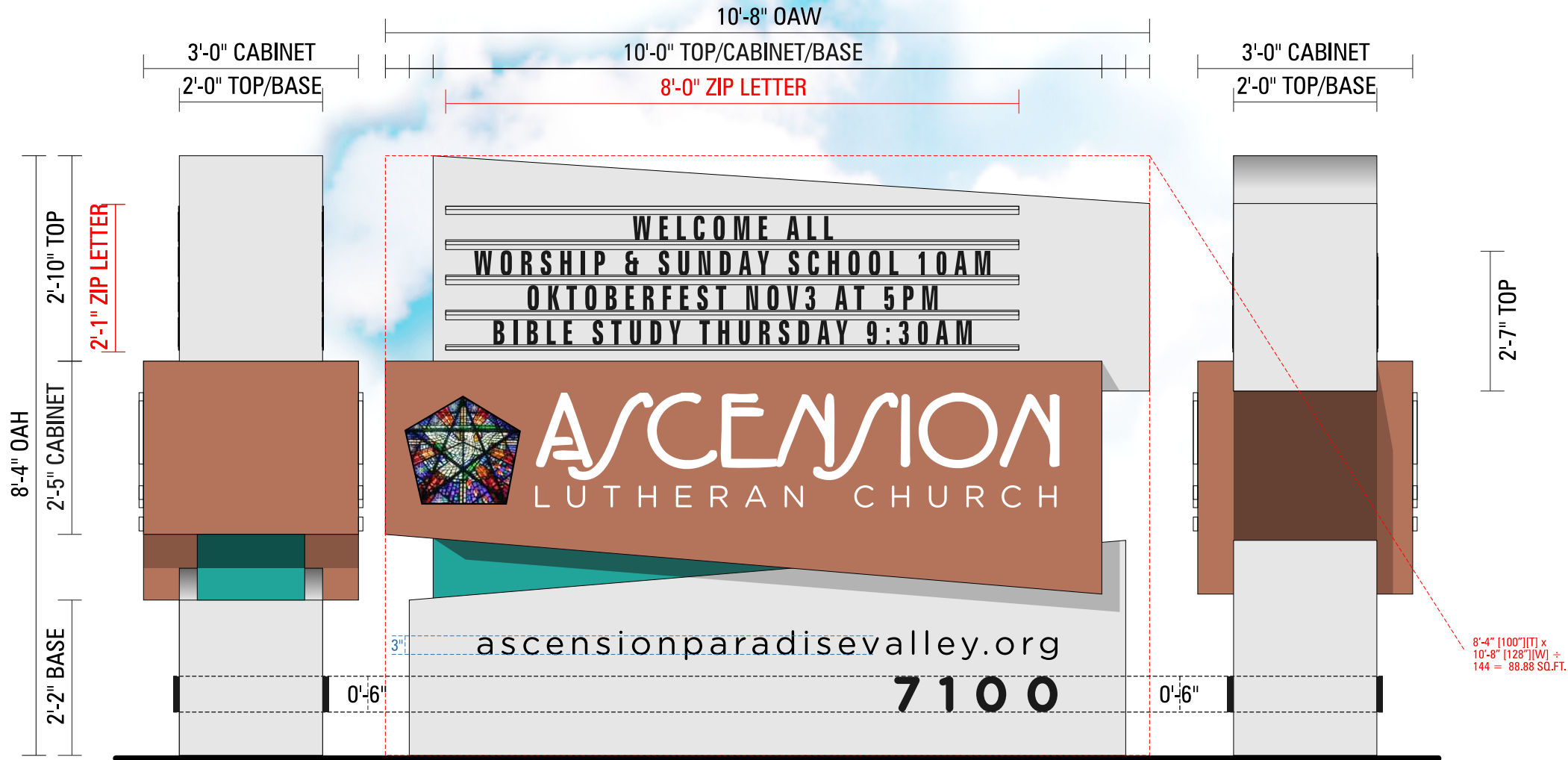
MANUFACTURE AND INSTALL (1) ONE DOUBLE-FACED UL LISTED WHITE L.E.D. INTERNALLY-ILLUMINATED ALUMINUM CONSTRUCTED MONUMENT STRUCTURE AS FOLLOWS:

"TOP", AS SPEC'D MANUFACTURE AND INSTALL (1) ONE DOUBLE-FACED NON-ILLUMINATED ALUMINUM CABINET PAINTED MATTE FINISH TO MATCH BUILDING COLORATION WITH ZIP TRACK LETTER TRACK SYSTEM (4") CONDENSED COPY WITH A TOTAL OF (124) ONE HUNDRED AND TWENTY-FOUR CHARACTERS AVAILABLE ON (4) FOUR COPY LINES, INCLUDING LETTER KIT SYSTEM AS SHOWN.

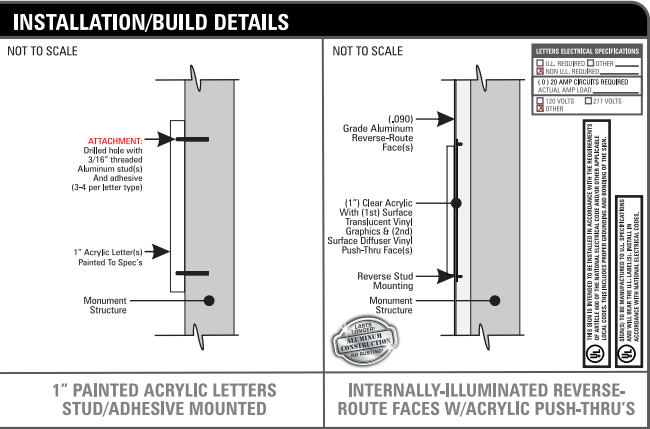
"CABINET", AS SPEC'D MANUFACTURE AND INSTALL (1) ONE DOUBLE-FACED UL LISTED WHITE L.E.D. INTERNALLY-ILLUMINATED ALUMINUM CABINET PAINTED MATTE FINISH TO MATCH BUILDING COLORATION REVERSE-ROUTE COPY WITH (1") CLEAR ACRYLIC PUSH-THRU'S WITH (1ST) SURFACE TRANSLUCENT VINYL OVERLAY & (2ND) SURFACE DIFFUSER VINYL UNDERLAY AS SHOWN.

"BASE", AS SPEC'D MANUFACTURE AND INSTALL (1) ONE DOUBLE-FACED NON-ILLUMINATED ALUMINUM CABINET PAINTED MATTE FINISH TO MATCH BUILDING COLORATION WITH (1") CLEAR ACRYLIC FLAT CUT OUT DIMENSIONAL ADDRESS NUMERALS & PHONE NUMBER STUD MOUNTED FLUSH TO BASE MOUNTED FLUSH TO GRADE AS SHOWN.

- *** REMOVAL AND DISPOSAL OF EXISTING MONUMENTAL SIGNAGE.
- *** REQUIRES CITY DESIGN REVIEW & PERMITTING.
- *** REQUIRES ONSITE FIELD SAKRETE CONCRETE FOOTING POUR FOR INSTALLATION MOUNTING FLUSH TO GRADE.
- *** REQUIRES CLEAN VECTOR FORMAT ARTWORK TO BE PROVIDED FOR PRODUCTION PURPOSES.

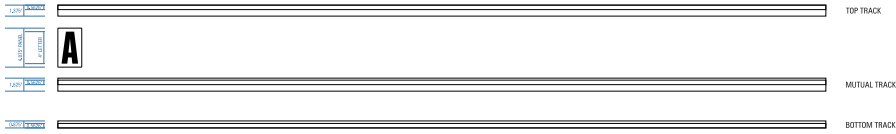


COLOR SCHEDULE A							
ACRYLIC	VINYL	VINYL	VINYL	TOP/BASE	REVEAL	CABINET	FCO'S
1 Acrylite® Acrylics Color: "Clear" Thickness: (1") GLOSS FINISH	2 3M™ Scotchcal™ Translucent Graphic Film Series 3630-20 White W/Full Color MATTE FINISH	3 3M™ Scotchcal™ Translucent Graphic Film Series 3630-20 White MATTE FINISH	4 3M™ Diffuser Film Series 3635-70 Color: "White" (70% light transmission)	5 Jewelrite® Trim Light Beige [TBD] TO MATCH BUILDING COLOR MATTE FINISH	6 Matthews® Paint TO MATCH BRAND COLORATION "Teal" MATTE FINISH	7 Dunn Edwards® Paint DE 5187 "Weathered Saddled" MATTE FINISH	8 Matthews® Paint Black LRV 4.2 S0A929SP MATTE FINISH



THIS DRAWING IS THE INTELLECTUAL PROPERTY OF ARIZONA COMMERCIAL SIGNS. REPRODUCTION IS PROHIBITED BY LAW - STATUTE: 17 U.S.C. §§ 101-810

GEMINI / WAGNER ZIP TRACK SYSTEM

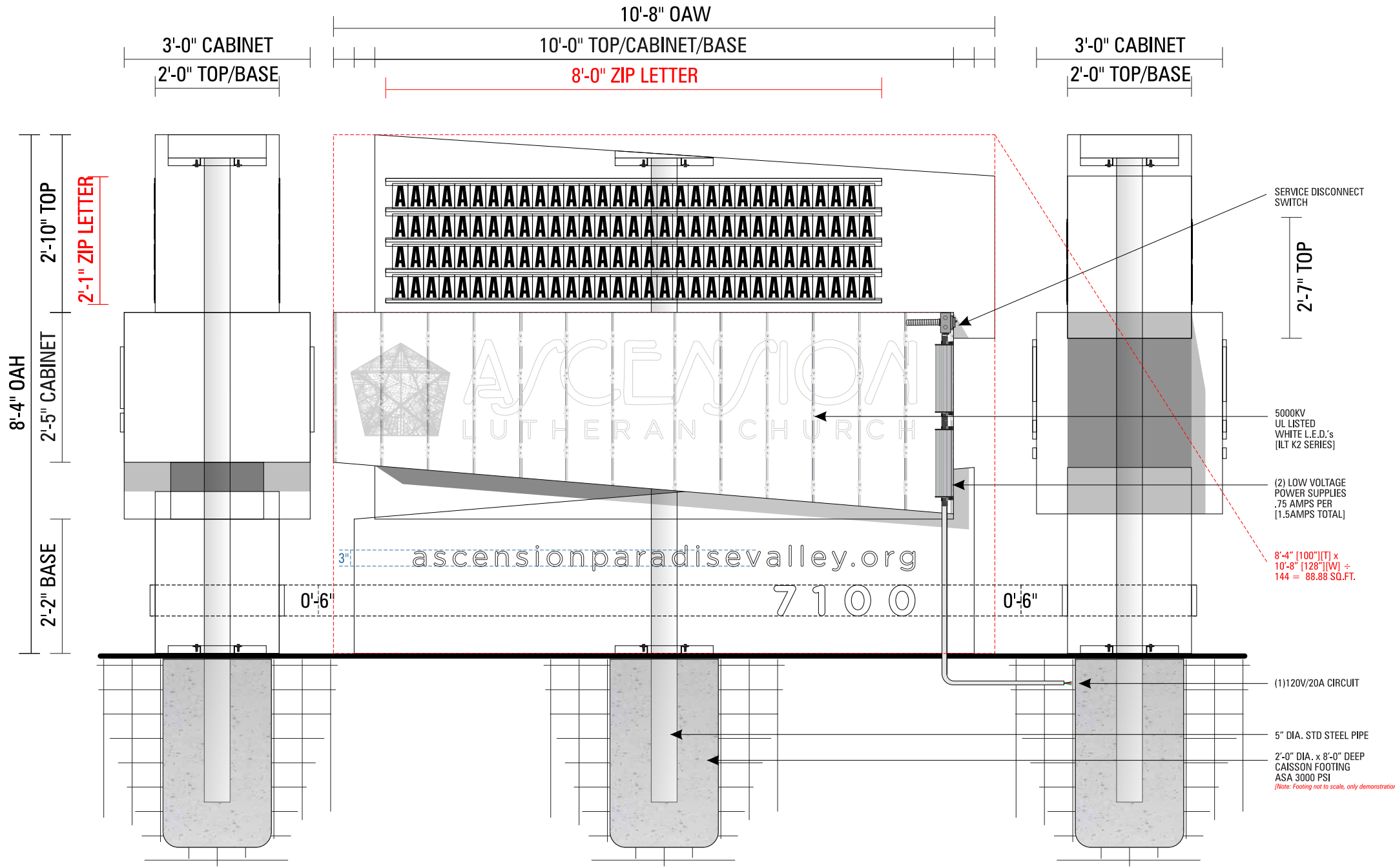
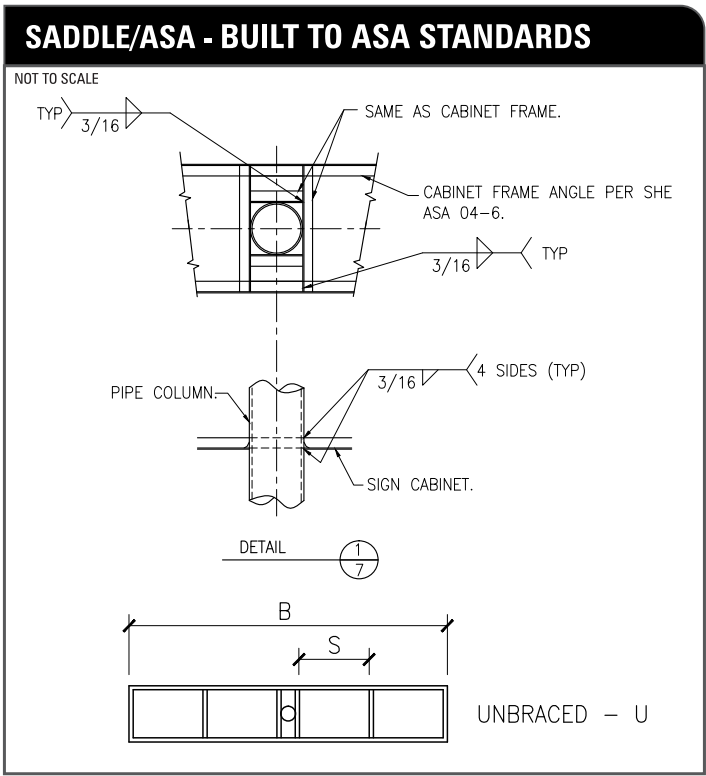


CONDENSED COPY

ABCDEFGHIJKLMNOPQRSTUVWXYZ
VWXYZ&\$%1234567890*
%?!/""':-#+)=1/21/43/41/3

A D/F INTERNALLY-ILLUMINATED MONUMENT STRUCTURE W/ZIP TRACK SYSTEM

SCALE: 1/2" = 1'-0" 88.88 SQ.FT. TOTAL PER SIGN FACE/SIDE



THIS DRAWING IS THE INTELLECTUAL PROPERTY OF ARIZONA COMMERCIAL SIGNS. REPRODUCTION IS PROHIBITED BY LAW - STATUTE: 17 U.S.C. §§ 101-810

www.arizonacommercialsigns.com

ARIZONA COMMERCIAL SIGNS
4018 E. WINSLOW • PHOENIX AZ 85040
OFFICE: (480) 921-9900 • FAX: (602) 437-8073

PROJECT NAME:
■ ASCENSION LUTHERAN CHURCH
7100 NORTH MOCKINGBIRD LANE
PARADISE VALLEY, ARIZONA 85253

CONTACT: THOMAS MUELLER
PHONE: 480-948-6050
EMAIL: ASCENSIONOFFICE@AOL.COM

CONTACT REP:
■ GARY DANKS - 480-577-3363

DESIGNER:
■ CHRIS HEARN

DESIGN NUMBER:
■ ASCENSION LUTHERAN 03-15-18 - R11 PERMIT

SCALE:
■ AS NOTATED

DATE:
■ 03/15/2018 10:27 AM MST, per. 04/12/2019 10:43 AM MST

REVISIONS:

1	(A) 3-LINE ZIP, BOLD "ASCENSION", P# ON BASE, MATTE	04/10/18	CH
2	COLOR SCHEMATIC UPDATE, De5187 WEATHERED SADDLE	09/25/18	CH
3	(A4) CLIENT CHOICE, OPTION "LUTHERAN CHURCH" TEAL	09/27/18	CH
4	CLIENT/PASTOR REVISIONS, PROVIDED NEW LOGO	11/01/18	CH
5	BACK TO TEAL REVEALS	11/02/18	CH

LANDLORD / DEVELOPER APPROVAL
SIGNATURE & DATE:

CUSTOMER APPROVAL
SIGNATURE & DATE:

SHEET:
2 OF 4
PERMIT

VINYL LOGISTICS

A

D/F INTERNALLY-ILLUMINATED MONUMENT STRUCTURE
W/ZIP TRACK SYSTEM

SCALE: 1/2" = 1'-0"

88.88 SQ.FT. TOTAL PER SIGN FACE/SIDE

3M™ Scotchcal™ Translucent Graphic Film Series 3630
3M™ Envision™ Translucent Film Series 3730

Product Bulletin 3630/3730
Release L, April 2017

3M™ Scotchcal™ Translucent Graphic Film Series 3630
3M™ Envision™ Translucent Film Series 3730

Product Description

- 2-mil, vinyl translucent films, available in crisp, clear colors (many with simulated PANTONE® color references)
- For Screen Printing, Cut Graphics, and Thermoforming
 - Use film series 3630 for fluorescent lighting applications
 - Use film series 3730 for LED applications

Quick Links

[3M Graphics Warranties](#)
[Technical Information Selector](#)
[Safety Data Sheets \(SDS\)](#)
[Flammability](#)
[Videos](#)

Some of these links lead to web-based resources that are not product-specific.

Product Features

- Matte surface finish eliminates glare and provides uniform color in reflected and transmitted light
- Pressure sensitive, permanent adhesive adheres to rigid and flexible substrates
- Synthetic, lay-flat liner that is not affected by water or humidity
- Cut electronically
- Thermoformable
- Permanent film
- Expected Performance Life of 7 years (unwarranted period for unprinted film with no graphic protection, applied to a flat, vertical, outdoor surface)

Recommended Types of Graphics and End Uses

- For indoor or outdoor use on internally-illuminated sign faces
- First and second surface application on rigid substrates
- First surface applications only on flexible substrates
- Thermoforming on rigid plastic substrates
- For use with fluorescent bulbs or LEDs. Typically for best results, 3M recommends:
 - film 3630 for fluorescent light applications
 - film 3730 for LED applications

When constructed and used as described in this Bulletin, these types of graphics and end uses may be warranted by the 3M™ MCS™ Warranty. Please read the entire Bulletin for details.

Special Considerations

3M recommends weeding before thermoforming when using film with red pigments. The red pigments available to film manufacturers today can stain plastic when thermoformed.

3M is very successful at helping you match day/night colors when the same color density is required in front lit and backlit graphics to maximize the effectiveness of your sign. Please contact 3M for assistance when this is a concern.

Recommended Compatible Products

Screen Printing Inks

- 3M™ Screen Printing Ink Series 1900
- 3M™ Screen Printing UV Ink Series 9800

Application Characteristics

Characteristic	Value
Finished Graphic Application Recommendation	Surface type: Flat, without rivets Surface type*: 3M flexible substrates; rigid substrates such as flat acrylic, polycarbonate**, high temperature co-polyester sheet, glass Application method: Wet or Dry, typical Application temperature: 60 °F (16°C) minimum air, substrate
Temperature Range After Application	-50 to +170 °F (-45 to +77 °C) (not for extended periods of time at the extremes) Low temperatures impacts on film applied to flexible substrates may result in cracking of the film and/or substrate
Recommended Light Source (for best results)	Film 3630: Fluorescent bulbs Film 3730: LEDs
Graphic Removal	Permanent

*These films typically adhere to solar-grade polycarbonate substrate. However, some lots of this substrate may inhibit adhesion. See 3M Instruction Bulletin 5.7 for additional information.
**Polycarbonate substrates require oven drying before use to remove moisture from the polycarbonate that will cause the film to bubble. Refer to manufacturers instructions for proper drying times and temperatures.

i

IMPORTANT NOTE

The user is responsible for determining and complying with all applicable building codes that affect the use of materials in interior and exterior awning, banner and sign face applications, including flammability standards. For more information on flammability requirements, contact your local building code officials. For information on the results of flammability testing on 3M flexible substrates, call 1-800-328-3908.

Colors

Colors shown on monitor and when printed are approximate representations of actual color available. Some of these products are a simulation of the closest PANTONE®-identified color standard. Consult current PANTONE Color Publications for accurate color. PANTONE® is a trademark or registered trademark of Pantone LLC in the United States and/or other countries.
© Pantone LLC, 2015. Produced under License Agreement between The 3M Company and Pantone LLC.

i

IMPORTANT NOTE

All color references are based on reflected, not transmitted, light viewing.



Product Bulletin - Release L, April 2017

THIS DRAWING IS THE INTELLECTUAL PROPERTY OF ARIZONA COMMERCIAL SIGNS. REPRODUCTION IS PROHIBITED BY LAW - STATUTE: 17 U.S.C. §§ 101-810

www.arizonacommercialsigns.com

Nationwide Sign Systems

ARIZONA COMMERCIAL SIGNS
4018 E. WINSLOW • PHOENIX AZ 85040
OFFICE: (480) 921-9900 • FAX: (602) 437-8073

PROJECT NAME:

■

ASCENSION LUTHERAN CHURCH
7100 NORTH MOCKINGBIRD LANE
PARADISE VALLEY, ARIZONA 85253

CONTACT: THOMAS MUELLER
PHONE: 480-948-6050
EMAIL: ASCENSIONOFFICE@AOL.COM

CONTACT REP:

■

GARY DANKS - 480-577-3363

DESIGNER:

■

CHRIS HEARN

DESIGN NUMBER:

■

ASCENSION LUTHERAN 03-15-18 - R11 PERMIT

SCALE:

■

AS NOTATED

DATE:

■

03/15/2018 10:27 AM MST, per. 04/12/2019 10:43 AM MST

REVISIONS:			
<div>1</div>	(A) 3-LINE ZIP, BOLD "ASCENSION", P# ON BASE, MATTE	04/10/18	CH
<div>2</div>	COLOR SCHEMATIC UPDATE, D65187 WEATHERED SADDLE	09/25/18	CH
<div>3</div>	(A4) CLIENT CHOICE, OPTION "LUTHERAN CHURCH" TEAL	09/27/18	CH
<div>4</div>	CLIENT/PASTOR REVISIONS, PROVIDED NEW LOGO	11/01/18	CH
<div>5</div>	BACK TO TEAL REVEALS	11/02/18	CH

LANDLORD / DEVELOPER APPROVAL
SIGNATURE & DATE:

■

CUSTOMER APPROVAL
SIGNATURE & DATE:

■

SHEET:

3 OF 4

PERMIT

PROJECT PERMIT INFORMATION:

PROJECT ADDRESS:
■ 7100 WEST MOCKINGBIRD LANE
PARADISE VALLEY, ARIZONA 85253

PROJECT SUBDIVISION:
■ MEADOWLARK ACRES LOT 1-3

ARIZONA PARCEL NUMBER [APN]:
■ 174-51-033

PROPERTY ZONING:
■ SUP-P

[PUC]:
■ 9270

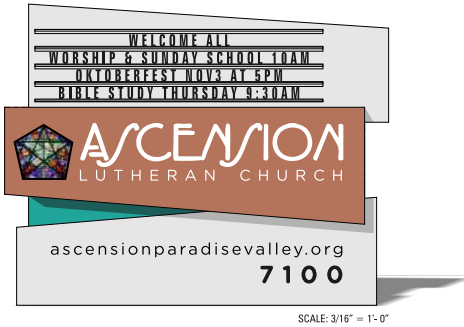
MARICOPA COUNTY RECORDS [MCR]:
■ 194-11

JURISDICTION:
■ TOWN OF PARADISE VALLEY



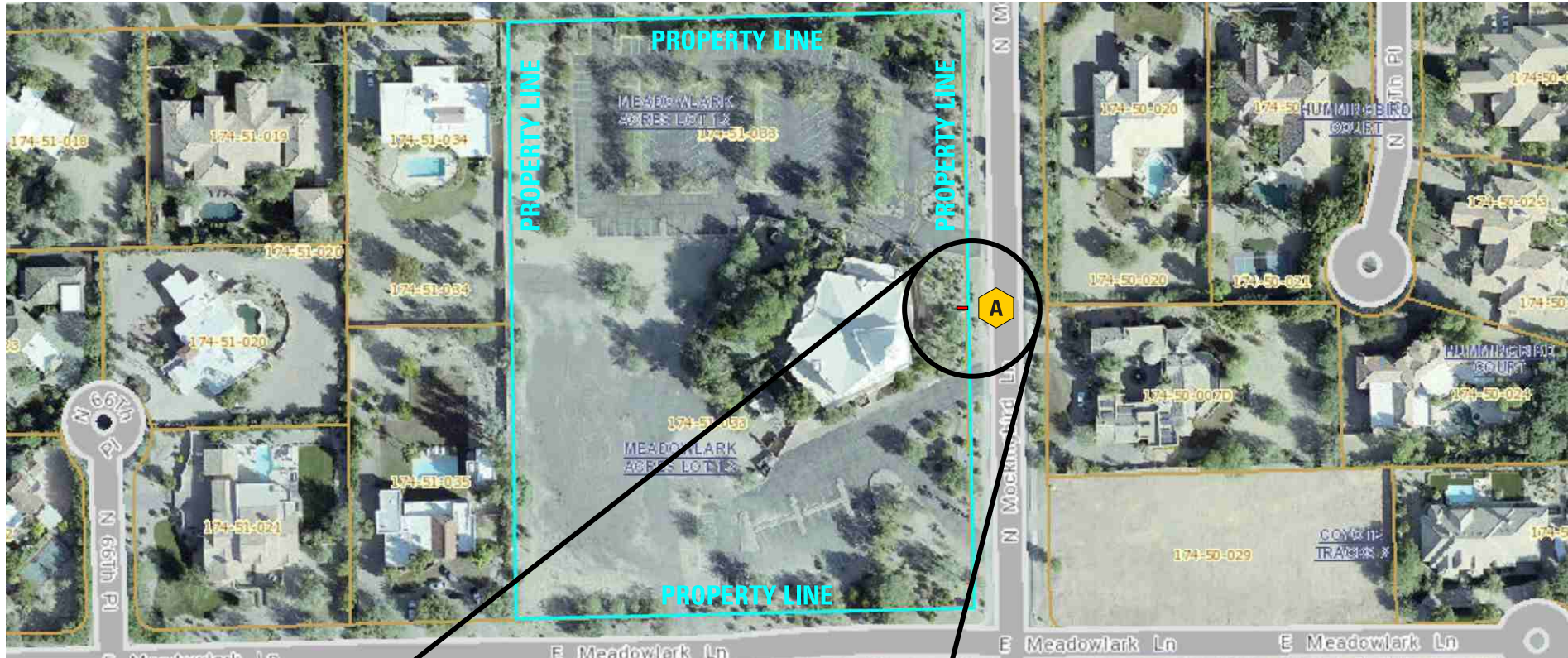
PROJECT DETAILS:

A



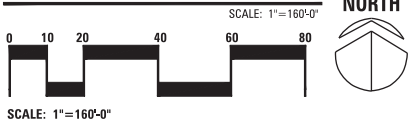
NOTES:

Blank lines for notes.



- = PROPERTY LINE
- = NEW MONUMENT
- = BACK OF CURB
- = SIGHT VISIBILITY TRIANGLE

FULL SITE PLAN



THIS DRAWING IS THE INTELLECTUAL PROPERTY OF ARIZONA COMMERCIAL SIGNS. REPRODUCTION IS PROHIBITED BY LAW - STATUTE: 17 U.S.C. §§ 101-810

www.arizonacommercialsigns.com



ARIZONA COMMERCIAL SIGNS
4018 E. WINSLOW • PHOENIX AZ 85040
OFFICE: (480) 921-9900 • FAX: (602) 437-8073

PROJECT NAME:
■ ASCENSION LUTHERAN CHURCH
7100 NORTH MOCKINGBIRD LANE
PARADISE VALLEY, ARIZONA 85253

CONTACT: THOMAS MUELLER
PHONE: 480-948-6050
EMAIL: ASCENSIONOFFICE@AOL.COM

CONTACT REP:
■ GARY DANKS - 480-577-3363

DESIGNER:
■ CHRIS HEARN

DESIGN NUMBER:
■ ASCENSION LUTHERAN 03-15-18 - R11 PERMIT

SCALE:
■ AS NOTATED

DATE:
■ 03/15/2018 10:27 AM MST, per. 04/12/2019 10:43 AM MST

REVISIONS:

1	(A) 3-LINE ZIP, BOLD "ASCENSION", P# ON BASE, MATTE	04/10/18	CH
2	COLOR SCHEMATIC UPDATE, De5187 WEATHERED SADDLE	09/25/18	CH
3	(A4) CLIENT CHOICE, OPTION "LUTHERAN CHURCH" TEAL	09/27/18	CH
4	CLIENT/PASTOR REVISIONS, PROVIDED NEW LOGO	11/01/18	CH
5	BACK TO TEAL REVEALS	11/02/18	CH

LANDLORD / DEVELOPER APPROVAL
SIGNATURE & DATE:

CUSTOMER APPROVAL
SIGNATURE & DATE:

SHEET:
4 OF **4**
PERMIT