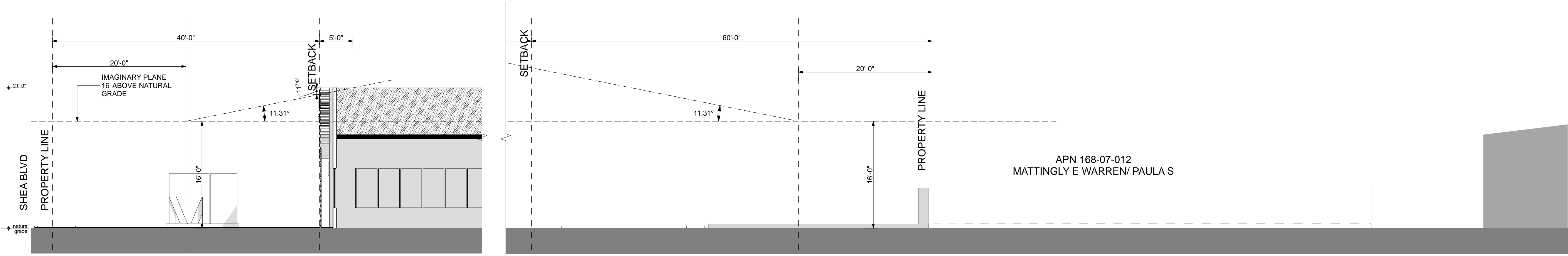
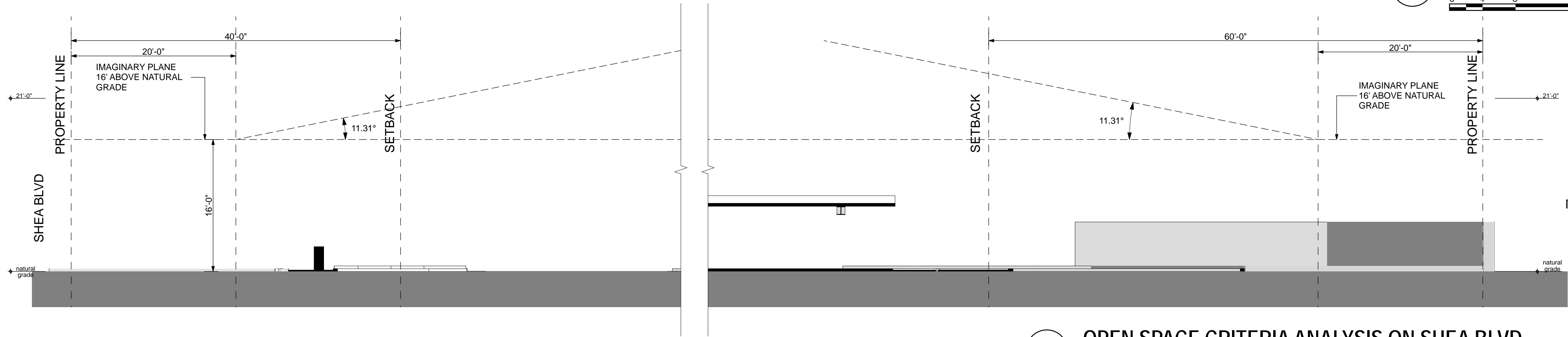


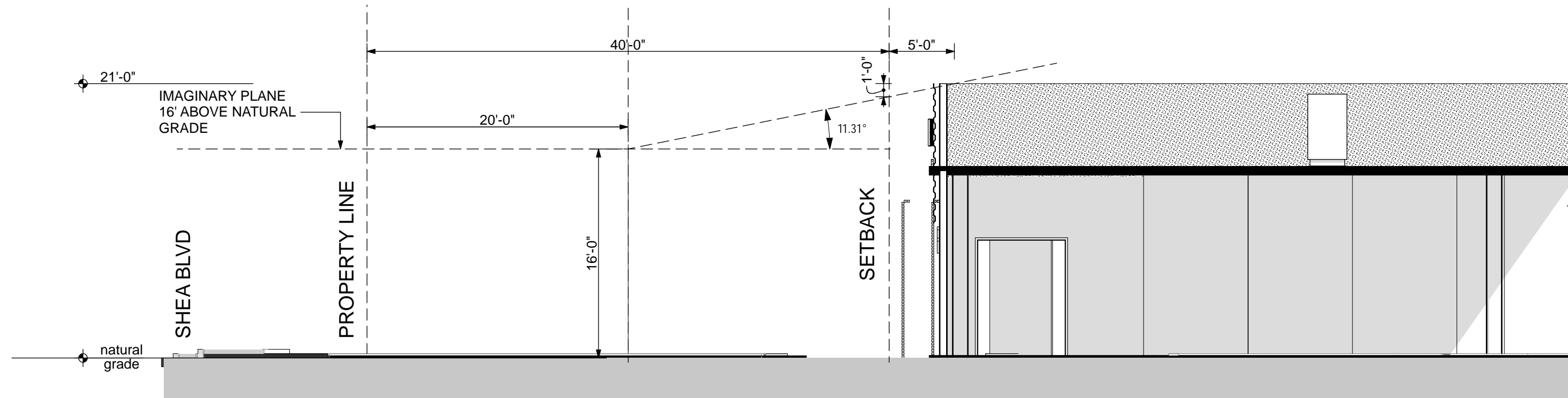
OrcuttWinslow Project 2018\_041 Mountain View Medical Center Redevelopment, Sections and Open Space Criteria Sheet 05.5.1 sections & open space criteria analysis was plotted by Bhoomi Desai on Monday, February 11, 2019 at 4:47 PM; file found at BIM Server: HC Bimserver - BIMcloud Basic for ARCHICAD 21/Health Care Studio/18\_041-01MinViewMedicalCtrRdevlpmt



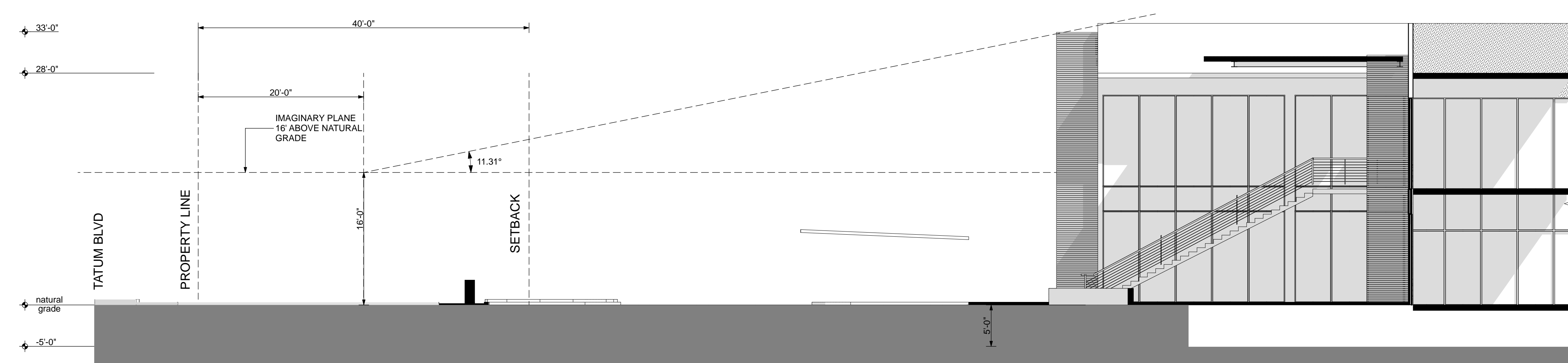
1 OPEN SPACE CRITERIA ANALYSIS ON SHEA BLVD



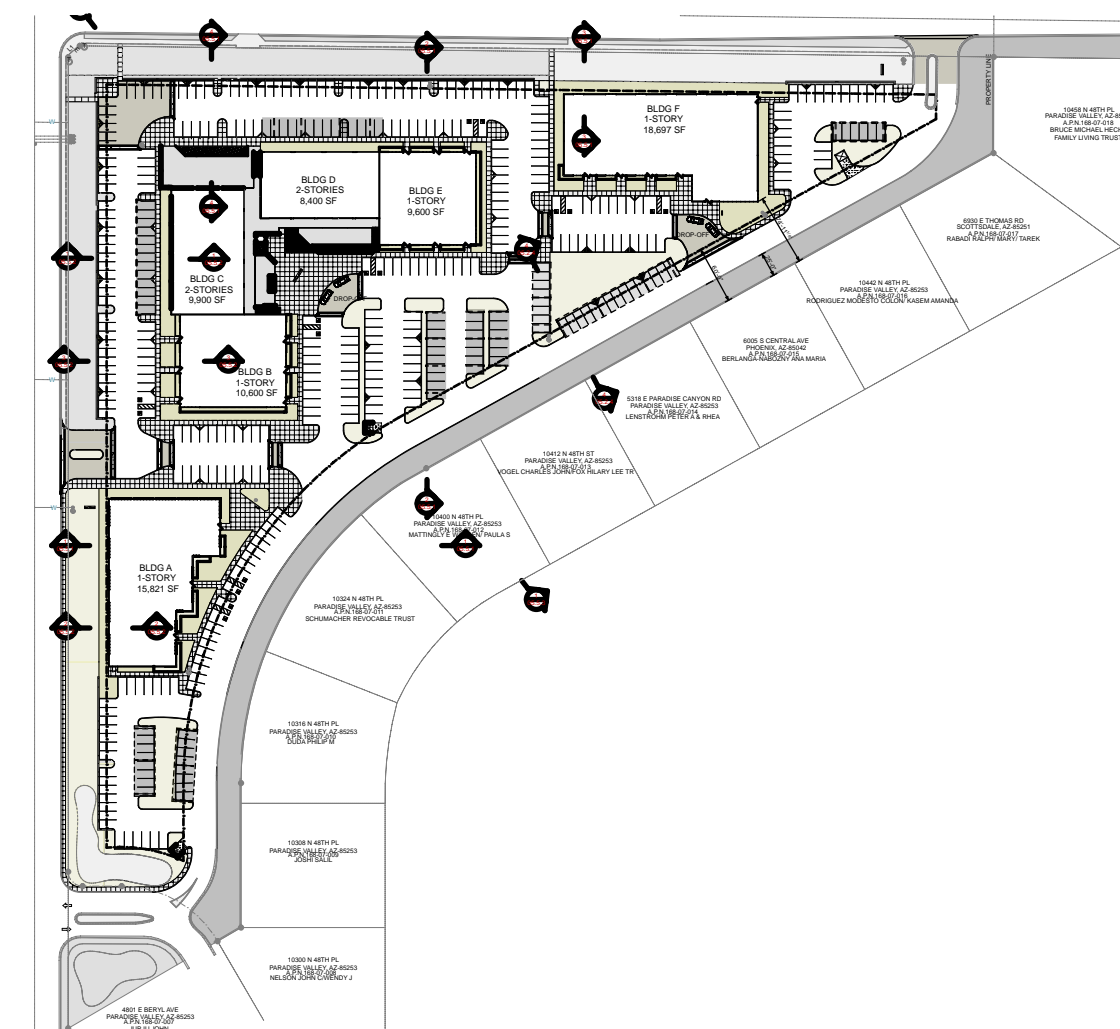
2 OPEN SPACE CRITERIA ANALYSIS ON SHEA BLVD



3 OPEN SPACE CRITERIA ANALYSIS ON SHEA BLVD



4 OPEN SPACE CRITERIA ANALYSIS ON TATUM BLVD



orcutt | winslow

2929 n central ave  
eleventh floor  
phoenix arizona 85012  
  
602.257.1764 t  
602.257.9029 f  
  
www.owp.com

REGISTERED ARCHITECT  
NOT FOR  
CONSTRUCTION  
ORCUTT | WINSLOW  
PHOENIX, ARIZONA, U.S.A.

© 2017 this (hard copy or electronic) drawing is an instrument of service and the property of the OrcuttWinslow Partnership and shall remain their property. The design professional shall not be responsible for any alterations, modifications or additions made to this drawing by any party other than the design professional. Use of this drawing shall be limited to the original use for which it was prepared and publication thereof is expressly limited to such use, in use or reproduction. Unless otherwise agreed in writing, design professional reserves all copyright or other proprietary interest in this drawing, and it may not be re-used for any other purpose without the design professional's written consent. Publication by any method in whole or part is prohibited without the written permission of the design professional. Any information obtained or conclusions derived from this drawing shall be at the user's sole risk.

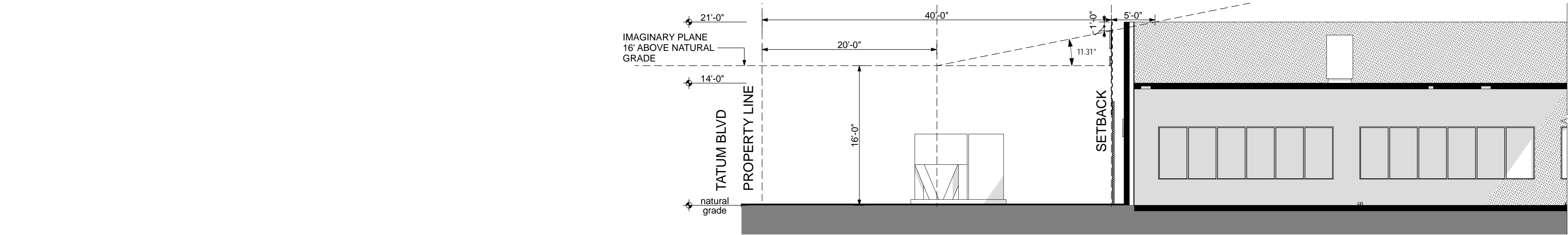
mountain view medical center, LLC  
**Mountain View Medical  
Center Redevelopment**  
10555, 10565, 10575, 10585, 10595, 10599 N. Tatum Blvd , Paradise Valley,  
Arizona 85253

CLIENT CONTACT	
mountain view medical center, LLC 2944 N. 44th St. Phoenix, AZ 85018	602.802.8106 t
PROJECT NO.	DATE OF ISSUE
2018_041	02.07.2019
REVISION NO.	DATE
1	09.26.2018
2	11.01.2018
3	01.22.2019
4	02.19.2019
PROJECT TEAM	DRAWN BY
John Cantrell	BD
PROJECT PHASE	
SUP major amendment Review #4	
SHEET CONTENTS	
sections & open space criteria analysis	
SHEET NO.	

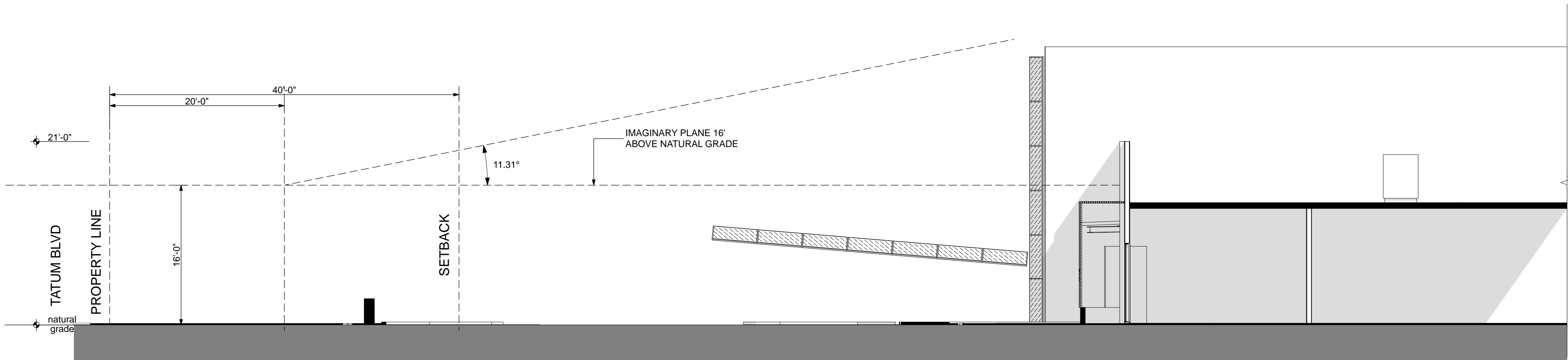
05.5.1



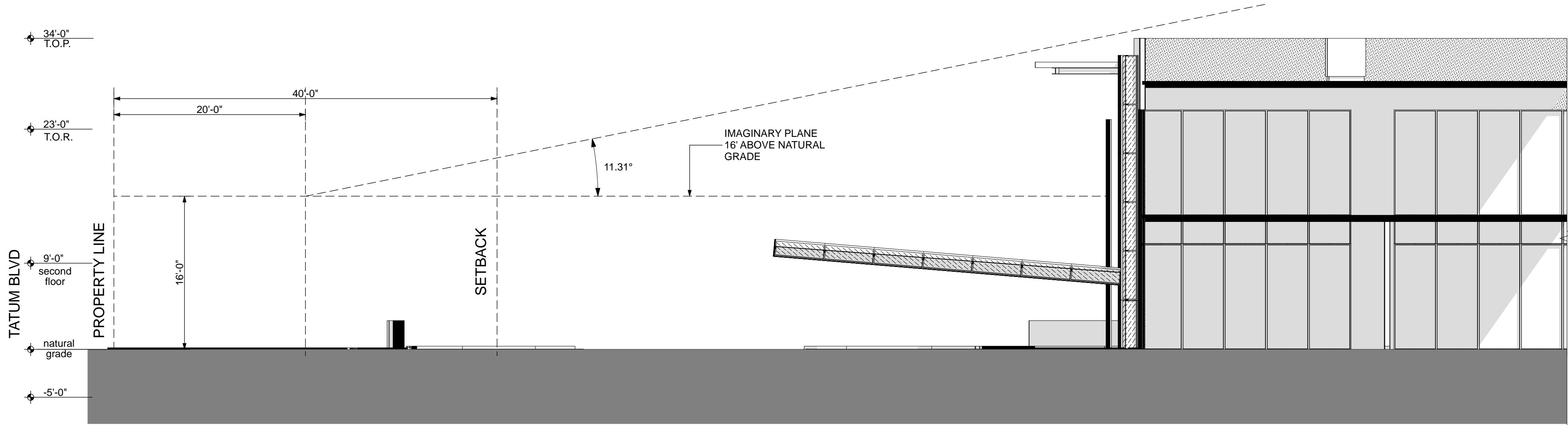
OrcuttWinslow Project 2018\_041 Mountain View Medical Center Redevelopment, Sections and Open Space Criteria Sheet 05.5.2 open space criteria analysis was plotted by Bhoomi Desai on Monday, February 11, 2019 at 4:47 PM; file found at BIM Server: HC Bimserver - BIMcloud Basic for ARCHICAD 21/Health Care Studio/18\_041-01MinViewMedicalCTRRedevelopmnt



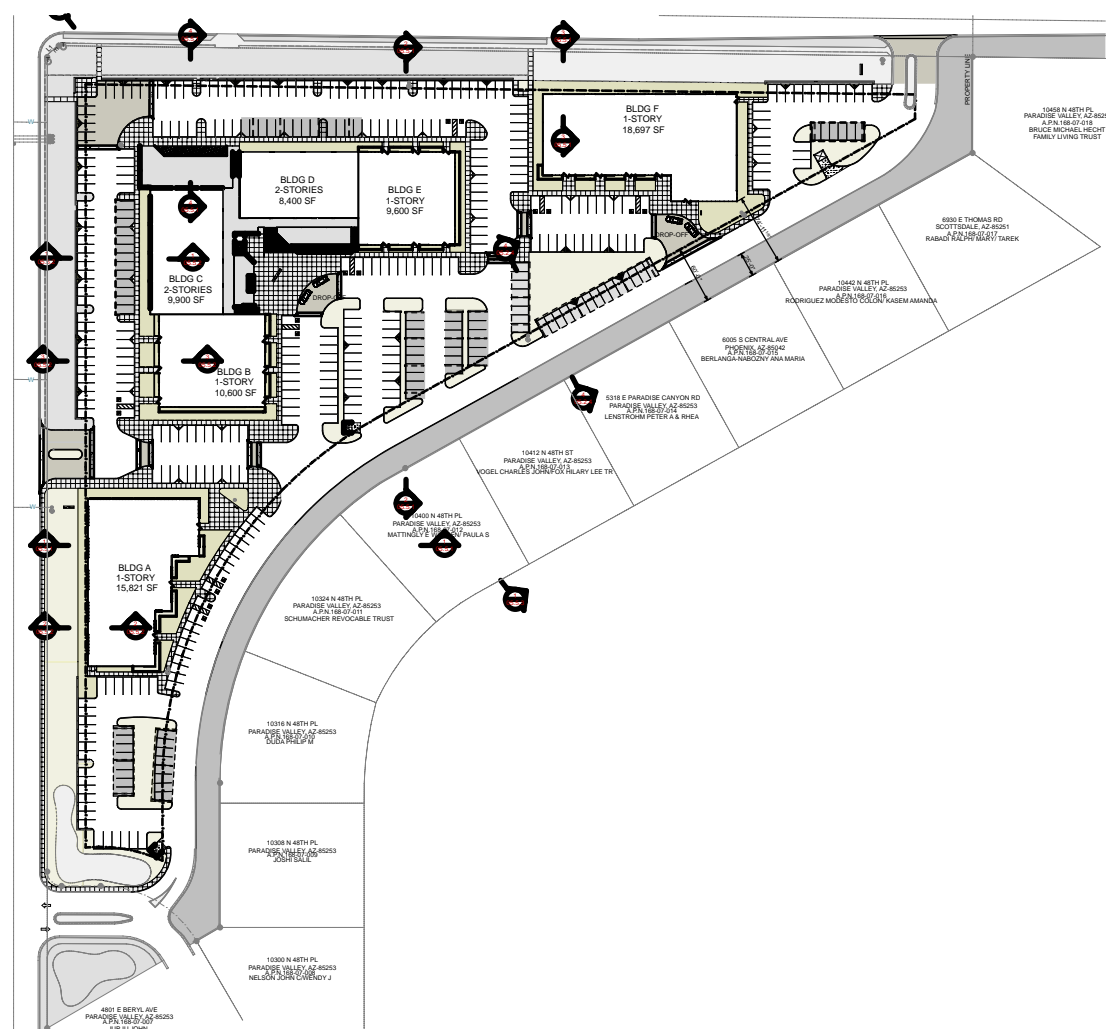
2 OPEN SPACE CRITERIA ANALYSIS ON TATUM BLVD



3 OPEN SPACE CRITERIA ANALYSIS ON TATUM BLVD



1 OPEN SPACE CRITERIA ANALYSIS ON TATUM BLVD



KEY PLAN

2929 n central ave  
eleventh floor  
phoenix arizona 85012

602.257.1764 t  
602.257.9029 f

www.owp.com



© 2017 this third copy or electronic drawing is an instrument of service and the property of the OrcuttWinslow Partnership and shall remain their property. The design professional shall not be responsible for any alterations, modifications or additions made to this drawing by any party other than the design professional. Use of this drawing shall be limited to the original use for which it was prepared and publication thereof is expressly limited to such use, in use or reproduction. Unless otherwise agreed in writing, design professional reserves all copyright or other proprietary interest in this drawing, and it may not be re-used for any other purpose without the design professional's written consent. Publication by any method in whole or part is prohibited without the written permission of the design professional. Any information obtained or conclusions derived from this drawing shall be at the user's sole risk.

mountain view medical center, LLC  
**Mountain View Medical  
Center Redevelopment**  
10555, 10565, 10575, 10585, 10595, 10599 N. Tatum Blvd , Paradise Valley,  
Arizona 85253

CLIENT CONTACT

mountain view medical center, LLC 602.802.8106 t  
2944 N. 44th St.  
Phoenix, AZ 85018

PROJECT NO.	DATE OF ISSUE
2018_041	02.07.2019
REVISION NO.	DATE
1	09.26.2018
2	11.01.2018
3	01.22.2019
4	02.19.2019

PROJECT TEAM

John Cantrell BD

PROJECT PHASE

SUP major amendment  
Review #4

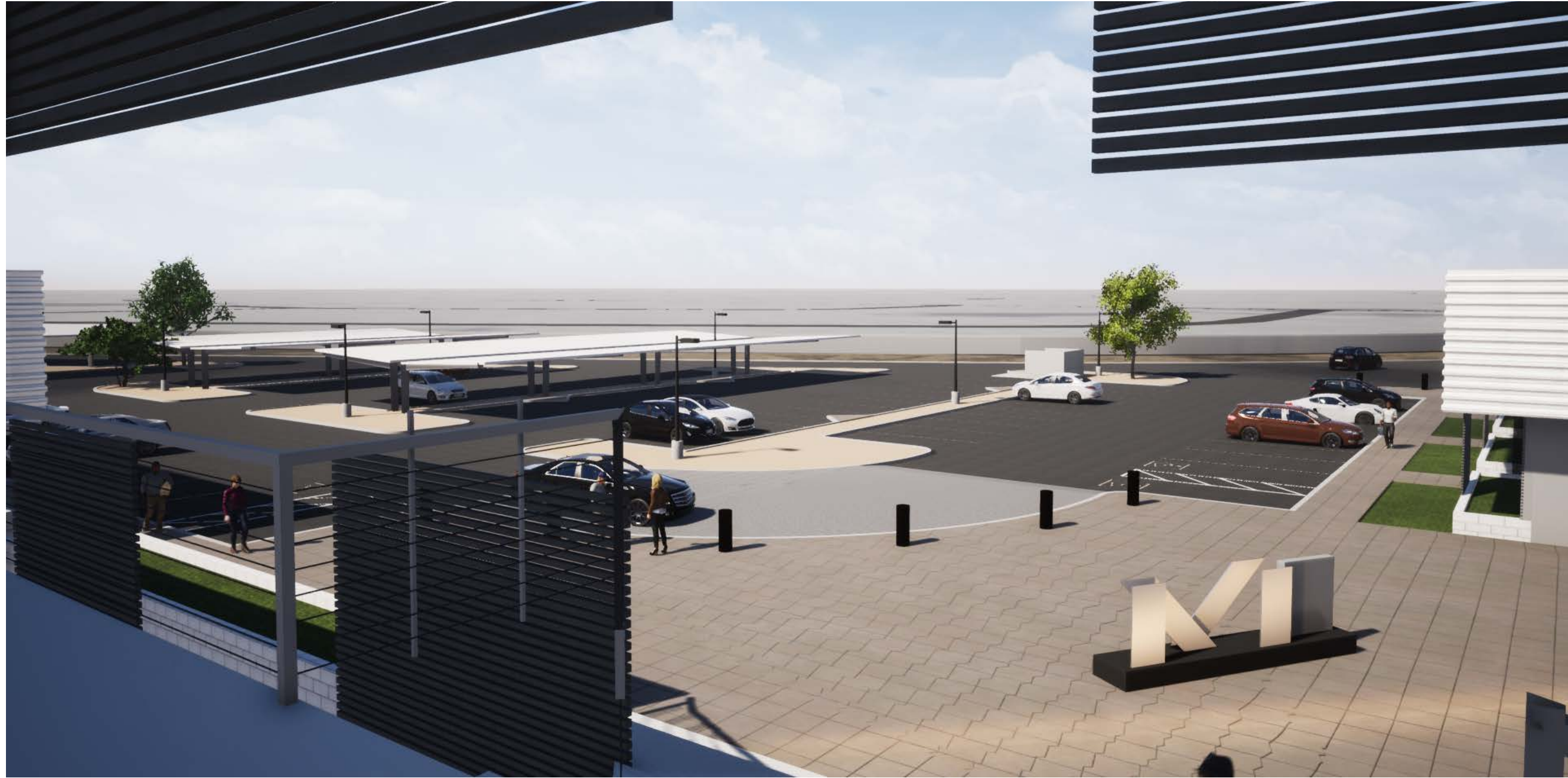
SHEET CONTENTS

open space criteria  
analysis

SHEET NO.

05.5.2





**1 SECTION THROUGH BLDG E PHASE III AND ADJACENT PLOT**