

Color Sample for Exposed Aggregate Concrete



FORMAN
ARCHITECTS
L.L.C.

Date: July 10, 2018

Project: Harris Garage

To: Town of Paradise Valley - Hillside Committee

Project Number: 1801

From: Forman Architects

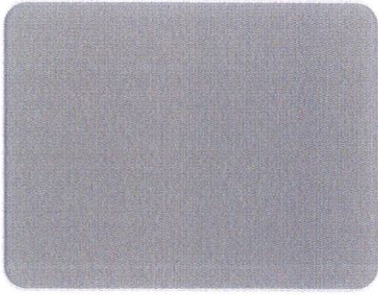
RE: LRV Calculation

cc:

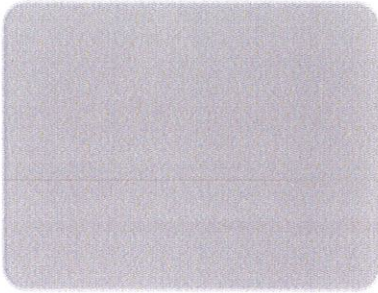
The attached color scan of the sample is made up of many colors. Per staff recommendation we have evaluated the sample using the paint deck from Dunn Edwards in an attempt to estimate the LRV of the sample. To achieve the calculation we multiplied the LRV times the evaluated percentage of use, added those values together and divided by 100% for an averaged total LRV of 32.5. The owner intends to use the lighter blend\ colors under patio roofing to reduce LRV further at front entry and rear patio.

$$(1,740 + 440 + 1180 + 300) / 100\% = 36.6$$

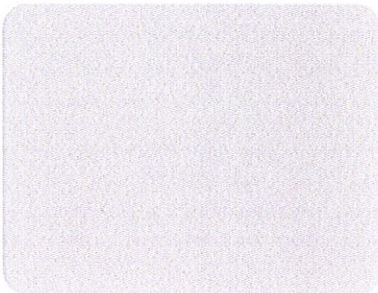




Color: DE 6382 Formal Grey
LRV: LRV 29
Percentage in Sample: 60%



Color: DE 6381 Silver Bullet
LRV: LRV 44
Percentage in Sample: 10%



Color: DET 6380 Clouded Vision
LRV: 59
Percentage in Sample: 20%



Color: Misc Rocks
LRV: 30
Percentage in Sample: 10%



Color Sample for Pebbletech



FORMAN
ARCHITECTS
L.L.C.

Date: July 10, 2018

Project: Harris Garage

To: Town of Paradise Valley - Hillside Committee

Project Number: 1801

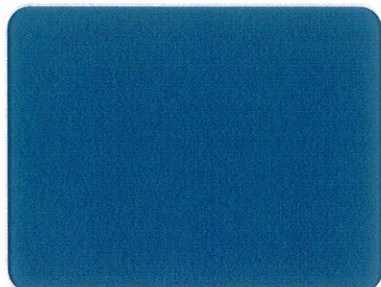
From: Forman Architects

RE: LRV Calculation

cc:

The attached color scan of the sample is made up of many colors. Per staff recommendation we have evaluated the sample using the paint deck from Dunn Edwards in an attempt to estimate the LRV of the sample. Since this is a raw sample, we soaked it in water prior to scanning. We also note that the wall closest to air are vertical (except stairs) and the largest portion of the application is below 5' of water. To achieve the calculation we multiplied the LRV times the evaluated percentage of use, added those values together and divided by 100% for an averaged total LRV of 28.15

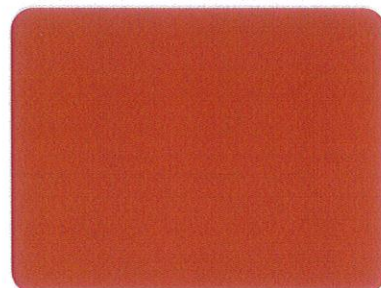
$(150+200+645+420+160+240+1,000) / 100\% = 28.15$



Color: DET 577 Big Sur Blue Jade

LRV: LRV 15

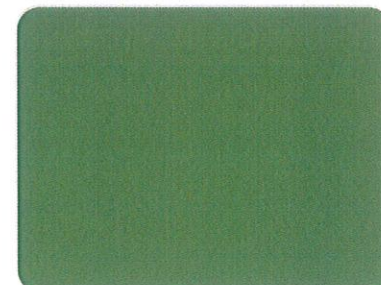
Percentage in Sample: 10%



Color: DE 5125 Red River

LRV: LRV 24

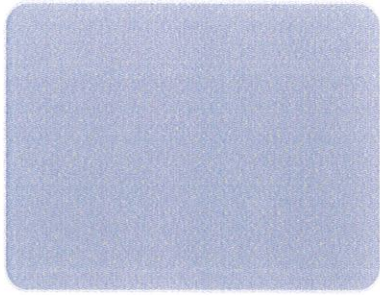
Percentage in Sample: 10%



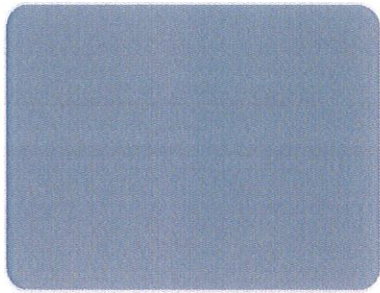
Color: DET 521 Arizona Tree Frog

LRV: 24

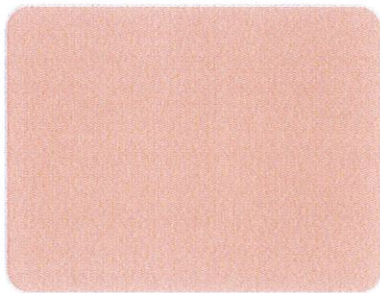
Percentage in Sample: 10%



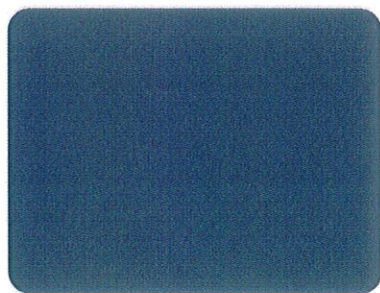
Color: DE 5919 Spacious Sky
LRV: LRV 43
Percentage in Sample: 15%



Color: DE 5920 London Fog
LRV: LRV 28
Percentage in Sample: 15%



Color: DET 5213 Seasonal Beige
LRV: 24
Percentage in Sample: 20%



Color: DET 578 Yankee Doodle
LRV: 10
Percentage in Sample: 20%

Color Sample for Travertine Blend



FORMAN
ARCHITECTS
L.L.C.

Date: July 10, 2018

Project: Harris Garage

To: Town of Paradise Valley - Hillside Committee

Project Number: 1801

From: Forman Architects

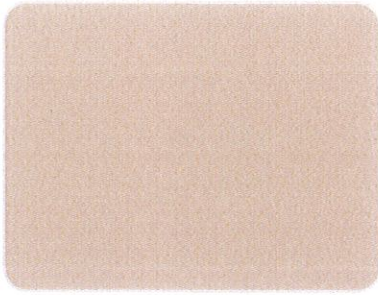
RE: LRV Calculation

cc:

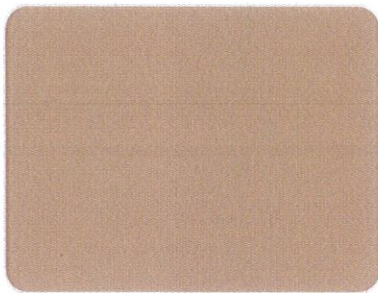
The attached color scan of the sample is made up of many colors. Per staff recommendation we have evaluated the sample using the paint deck from Dunn Edwards in an attempt to estimate the LRV of the sample. To achieve the calculation we multiplied the LRV times the evaluated percentage of use, added those values together and divided by 100% for an averaged total LRV of 32.5. The owner intends to use the lighter blend\ colors under patio roofing to reduce LRV further at front entry and rear patio.

$$(1,175+1,155+920) / 100\% = 32.5$$

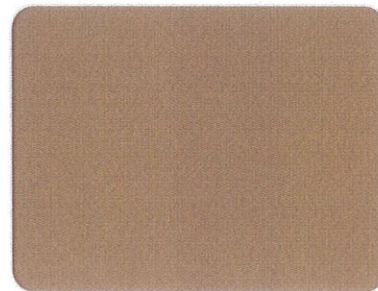




Color: DE 6129 Rustic Taupe
LRV: LRV 47
Percentage in Sample: 25%



Color: DE 6130 Wooded Acre
LRV: LRV 33
Percentage in Sample: 35%



Color: DET 6131 Teddy Bear
LRV: 23
Percentage in Sample: 40%



COLOR SUBMITTAL

WALL COLOR

THE #1 CHOICE OF
PAINTING PROFESSIONALS®

Job Name: **Town of Paradise Valley**

Painting Contractor: **0**

General Contractor: **0**

Architect/Designer: **Forman Architects**

Date: **May 25, 2018**

Product: **SSHL10**

Color: **DET624 Sorrel Felt (LRV 31)**

Area / Sheen: **Flat**

D.E. Contact: **Tim Garver 602.714.7280**

This submittal is intended for color and sheen approval and may not have been produced from the actual product specified. Dunn-Edwards recommends following the procedures outlined in PDCA Std. P5-09 Sample Procedure



COLOR SUBMITTAL

ROOF COLOR

THE #1 CHOICE OF
PAINTING PROFESSIONALS®

Job Name: **Town of Paradise Valley**

Painting Contractor: **0**

General Contractor: **0**

Architect/Designer: **Forman Architects**

Date: **May 25, 2018**

Product: **SSHL10**

Color: **DEC771 Shaggy Barked ((LRV 38))**

Area / Sheen: **Flat**

D.E. Contact: **Tim Garver 602.714.7280**

This submittal is intended for color and sheen approval and may not have been produced from the actual product specified. Dunn-Edwards recommends following the procedures outlined in PDCA Std. P5-09 Sample Procedure