



Camelback Bible Church Fellowship Hall Addition Project Narrative

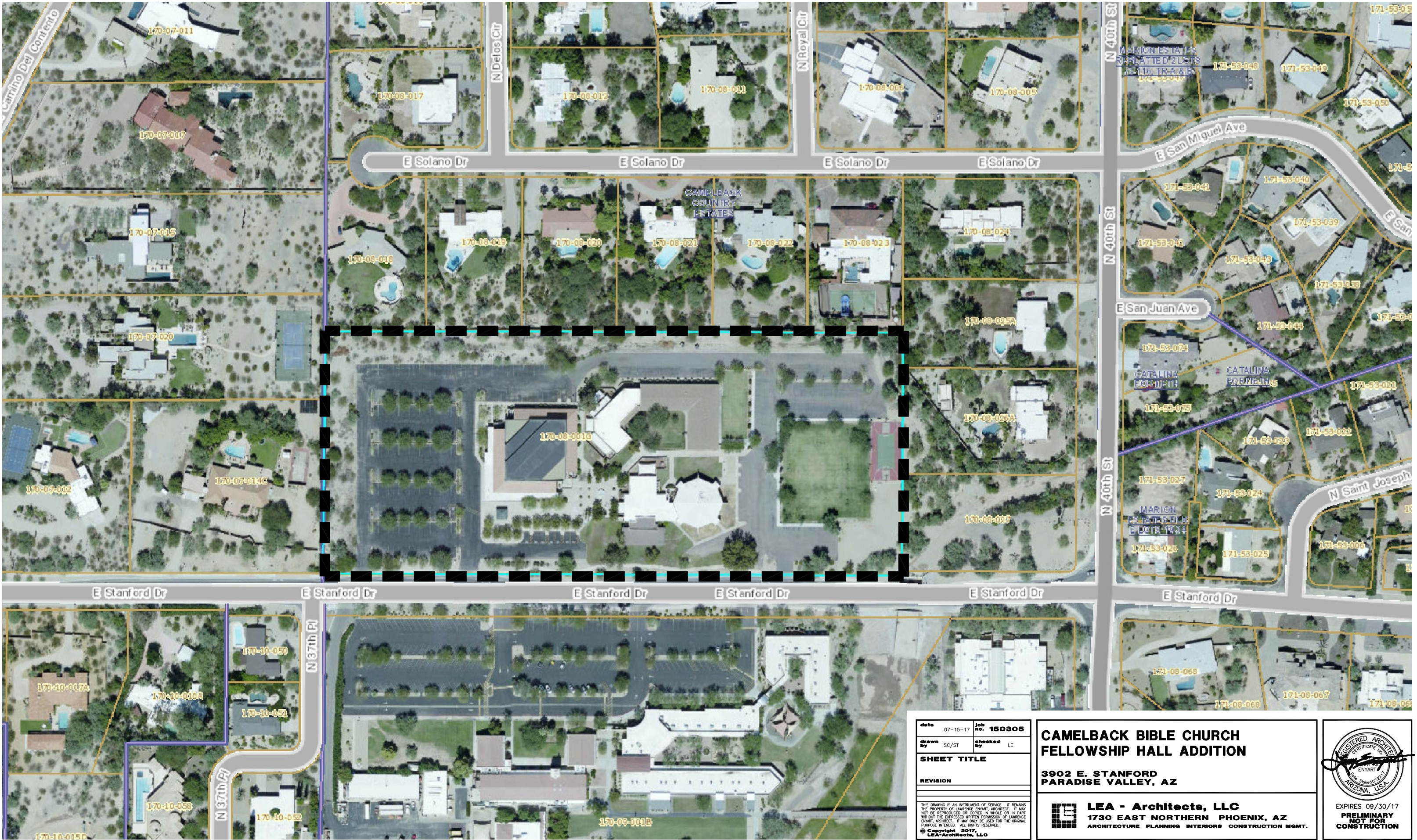
The proposed Minor Amendment to the existing Camelback Bible Church SUP includes a 5,000 SF addition to the existing 5,500 SF Fellowship Hall located on the south-east corner of the Camelback Bible Church Campus. The proposed new addition is located to the south and east of the existing Fellowship Hall and consists of new storage and administration program spaces for the Church. The massing of the proposed addition is varied in scale and materials, stepping down in height along the south elevation facing Stanford Drive. The new east facing entry sequence defined by the cantilevered roof projection creates a more open and inviting presence for the Church Administration on the east side of the campus. The additional 5,000 SF of new impervious roof area required for the new addition will be offset by the reconfiguration of the existing entry driveway and removal of approximately 5,000 SF of existing asphalt pavement to the south of the existing Fellowship Hall which will be replaced with new pervious landscaped areas.



view north-west towards administration entry



south elevation – view from Stanford Drive



date	07-15-17	job no.	150305
drawn by	SC/ST	checked by	LE
SHEET TITLE			
REVISION			
THIS DRAWING IS AN INSTRUMENT OF SERVICE. IT REMAINS THE PROPERTY OF LAWRENCE ENYART, ARCHITECT. IT MAY NOT BE REPRODUCED OR COPIED IN WHOLE OR IN PART WITHOUT THE EXPRESSED WRITTEN PERMISSION OF LAWRENCE ENYART, ARCHITECT. IT MAY ONLY BE USED FOR THE ORIGINAL PURPOSE INTENDED. ALL RIGHTS RESERVED.			
© Copyright 2017 LEA Architects, LLC			

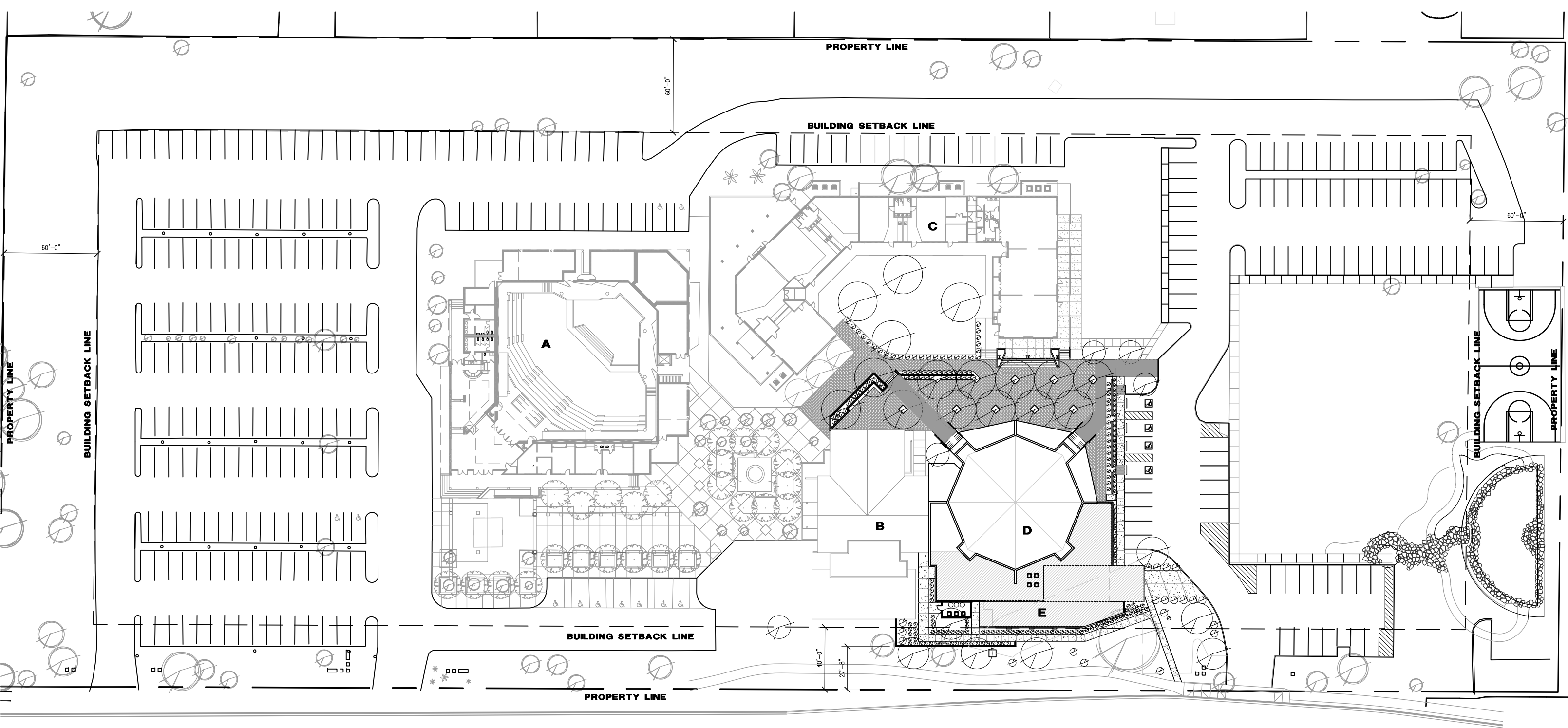
**CAMELBACK BIBLE CHURCH
FELLOWSHIP HALL ADDITION**

**3902 E. STANFORD
PARADISE VALLEY, AZ**

LEA - Architects, LLC
1730 EAST NORTHERN PHOENIX, AZ
ARCHITECTURE PLANNING INTERIORS CONSTRUCTION MGMT.

REGISTERED ARCHITECT
CERTIFICATE NO. 150305
LAWRENCE ENYART
SIGNED 07/15/17
ARIZONA, U.S.A.

EXPIRES 09/30/17
**PRELIMINARY
CONSTRUCTION**



FELLOWSHIP HALL
OVERALL SITE PLAN



SCALE: 1"=60'-0"



STANFORD DRIVE

5,000SF STORAGE AREA & ADMINISTRATION ADDITION

PARKING PROVIDED (EXISTING)	=	307
PARKING REQ. PER 2013 SUP PARKING SUMMARY WITHOUT CONSIDERATION OF INTERNAL CAPTURE	=	284
PARKING REQ. PER 2013 SUP PARKING SUMMARY WITH CONSIDERATION OF INTERNAL CAPTURE	=	214
ADDITIONAL PARKING REQ. FOR NEW ADMIN BUILDING ADDITION	=	17
TOTAL PARKING PROVIDED IS GREATER THAN REQUIRED PARKING PER 2013 SUP PARKING SUMMARY WITH/WITHOUT CONSIDERATION OF INTERNAL CAPTURE		

SITE AREA		
SQUARE FOOTAGE	=	417,000
TOTAL SITE ACREAGE	=	9.573
BUILDING COVERAGE		
TOTAL EXISTING SQUARE FOOTAGE	=	41,350
NEW ADDITION - ADMIN./ STOR. BLDG.	=	5,000
TOTAL PROPOSED SQUARE FOOTAGE	=	46,350
PERMANENT PARKING AREA		
TOTAL EXISTING SQUARE FOOTAGE	=	143,990
TOTAL SQUARE FOOTAGE REDUCTION	=	5,820
TOTAL PROPOSED SQUARE FOOTAGE	=	138,170

FLOOR AREA RATIO		
EXISTING	=	45,505/ 417,000
PROPOSED	=	50,505/ 417,000
BUILDING SETBACKS		
NORTH SETBACK	60'-0"	
SOUTH SETBACK	40'-0"	
EAST SETBACK	60'-0"	
WEST SETBACK	60'-0"	
LANDSCAPE SETBACKS		
NORTH SETBACK	40'-0"	
SOUTH SETBACK	30'-0"	
EAST SETBACK	40'-0"	
WEST SETBACK	40'-0"	

BUILDING MAX HEIGHT		
A SANCTUARY	32'-0"	
B ADMINISTRATION	14'-0"	
C SCHOOL	15'-0"	
D FELLOWSHIP HALL	17'-4"	
E NEW ADDITION ADMINISTRATION/ STORAGE	17'-8"	

date	07-15-17	job no.	150305
drawn by	SC/ST	checked by	LE
SHEET TITLE			
REVISION			
THIS DRAWING IS AN INSTRUMENT OF SERVICE. IT REMAINS THE PROPERTY OF LAWRENCE ENYART, ARCHITECT. IT MAY NOT BE REPRODUCED OR COPIED IN WHOLE OR IN PART WITHOUT THE EXPRESSED WRITTEN PERMISSION OF LAWRENCE ENYART, ARCHITECT. IT MAY ONLY BE USED FOR THE ORIGINAL PURPOSE INTENDED. ALL RIGHTS RESERVED.			
© Copyright 2017 LEA-Architects, LLC			

date	07-15-17	job no.	150305
drawn by	SC/ST	checked by	LE
SHEET TITLE			
REVISION			
THIS DRAWING IS AN INSTRUMENT OF SERVICE. IT REMAINS THE PROPERTY OF LAWRENCE ENYART, ARCHITECT. IT MAY NOT BE REPRODUCED OR COPIED IN WHOLE OR IN PART WITHOUT THE EXPRESSED WRITTEN PERMISSION OF LAWRENCE ENYART, ARCHITECT. IT MAY ONLY BE USED FOR THE ORIGINAL PURPOSE INTENDED. ALL RIGHTS RESERVED.			
© Copyright 2017 LEA-Architects, LLC			

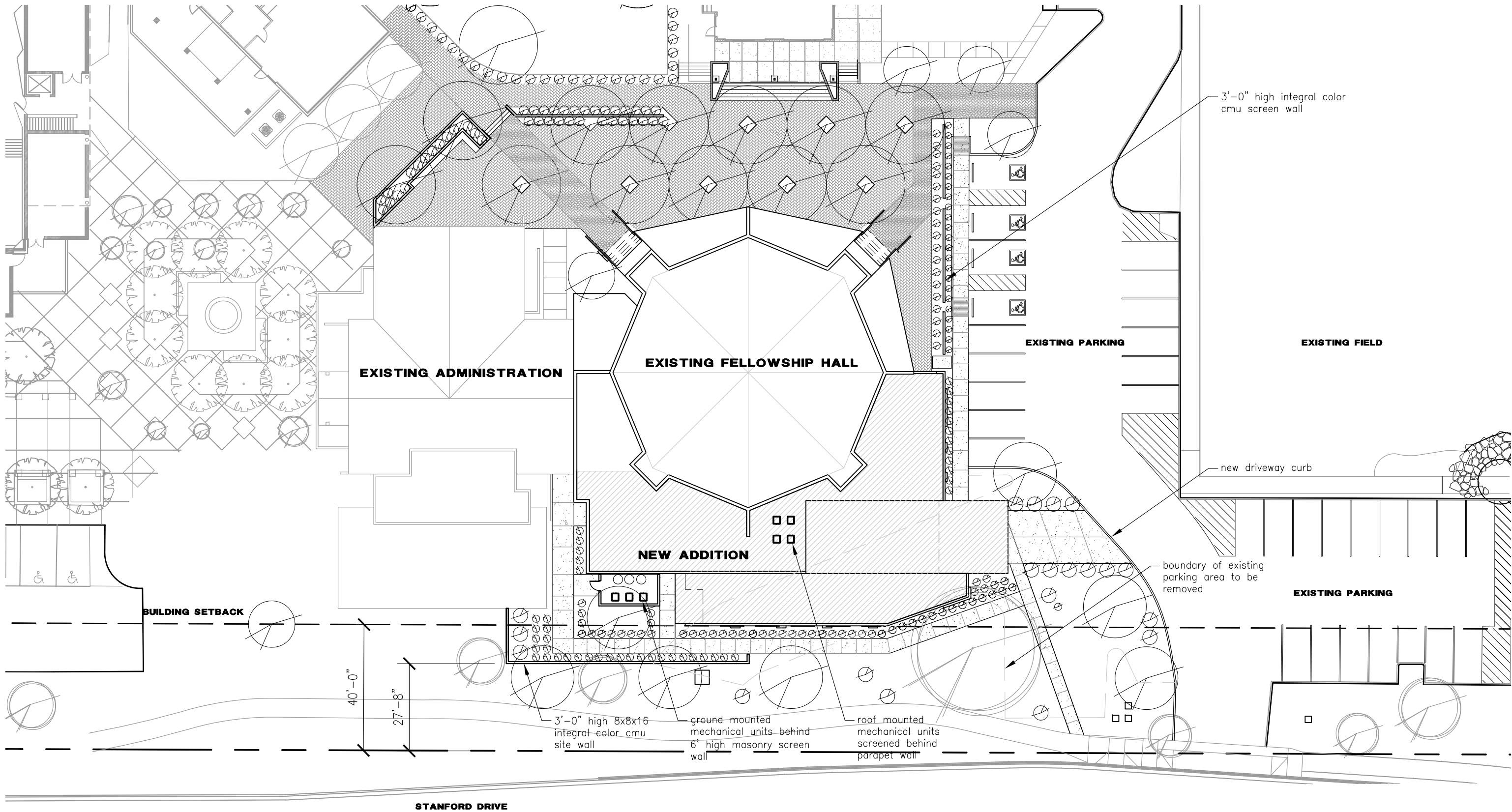
**CAMELBACK BIBLE CHURCH
FELLOWSHIP HALL ADDITION**

**3902 E. STANFORD
PARADISE VALLEY, AZ**

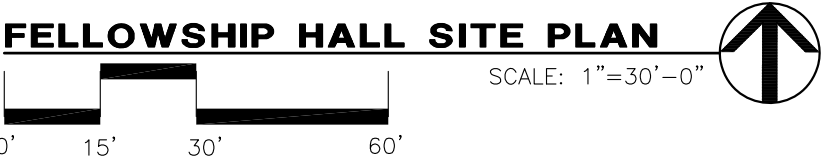
LEA - Architects, LLC
1730 EAST NORTHERN PHOENIX, AZ
ARCHITECTURE PLANNING INTERIORS CONSTRUCTION MGMT.

REGISTERED ARCHITECT
CERTIFICATE NO. 150305
LAWRENCE ENYART
PHOENIX, ARIZONA, U.S.A.

EXPIRES 09/30/17
**PRELIMINARY
NOT FOR
CONSTRUCTION**



 5,000SF STORAGE AREA & ADMINISTRATION ADDITION




date	07-15-17	job no.	150305
drawn by	SC/ST	checked by	LE
SHEET TITLE			
REVISION			
THIS DRAWING IS AN INSTRUMENT OF SERVICE. IT REMAINS THE PROPERTY OF LAWRENCE ENYART, ARCHITECT. IT MAY NOT BE REPRODUCED OR COPIED IN WHOLE OR IN PART WITHOUT THE EXPRESSED WRITTEN PERMISSION OF LAWRENCE ENYART, ARCHITECT. IT MAY ONLY BE USED FOR THE ORIGINAL PURPOSE INTENDED. ALL RIGHTS RESERVED.			
© Copyright 2017, LEA-Architects, LLC			

**CAMELBACK BIBLE CHURCH
FELLOWSHIP HALL ADDITION**

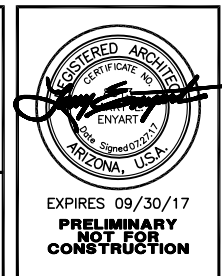
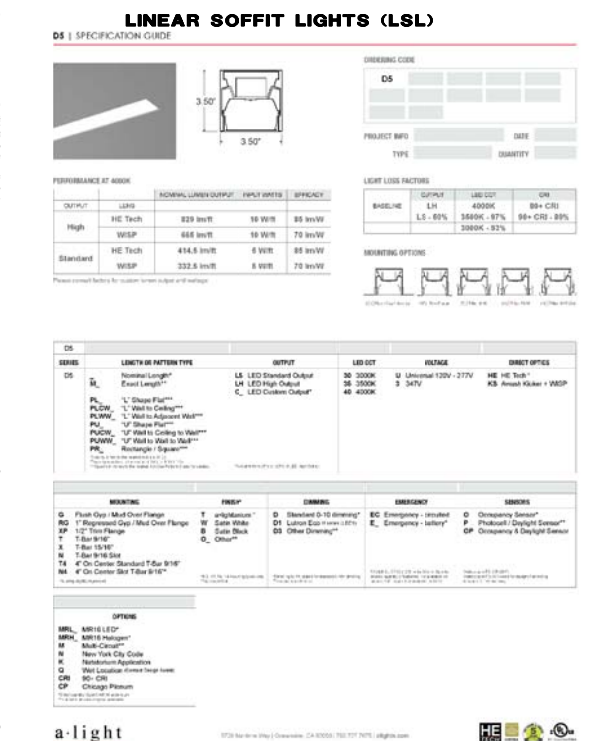
**3902 E. STANFORD
PARADISE VALLEY, AZ**



LEA - Architects, LLC
1730 EAST NORTHERN PHOENIX, AZ
ARCHITECTURE PLANNING INTERIORS CONSTRUCTION MGMT.



EXPIRES 09/30/17
**PRELIMINARY
NOT FOR
CONSTRUCTION**



Drive-over surface-mounted luminaires to illuminate ground surfaces

Outer Housing: Constructed of high tensile strength, copper free die-cast aluminum alloy with two (2) light openings. Slotted, stainless steel base plate allows top casting to rotate to any orientation. Die castings are marine grade, copper free ($\leq 0.3\%$ copper content) A360.0 aluminum alloy.

Enclosure: One piece heavy duty die cast aluminum body with clear borosilicate lens. Reflector of pure anodized aluminum. All aluminum used in the construction is marine grade and copper free. All fasteners are stainless steel. Two (2) molded, one piece, high temperature silicone gaskets on top and bottom of the lens.

Electrical: 1.3W LED luminaire, 1.5 total system watts, -30°C start temperature. Remote 24V DC driver required. LED module(s) are available from factory for easy replacement. Standard LED color temperature is 3000K with an 85 CRI. Available in 4000K (85 CRI); add suffix K4 to order.

Note: LEDs supplied with luminaire. Due to the dynamic nature of LED technology, LED luminaire data on this sheet is subject to change at the discretion of BEGA-US. For the most current technical data, please refer to www.bega-us.com.

Mounting: Luminaire mounts directly to ground-mounted weathertight wiring box, by BEGA, suitable for 1/2" side or bottom conduit entry.

Note: The luminaires must not be installed in traffic lanes where they are subject to horizontal pressure from vehicles braking, accelerating and changing direction. A foundation must be supplied by the contractor designed to bear the static pressure loads from vehicles with pneumatic tires. The luminaires are designed to withstand a static load of 2,200 lbs.

Finish: All BEGA standard finishes are polyester powder coat with minimum 3 mil thickness. Available in standard BEGA Black (BLK). Custom colors not available.

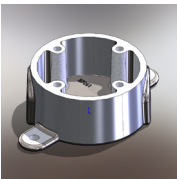
CSA certified to U.S. and Canadian standards for wet locations. Protection class IP67

Weight: 2.1 lbs.

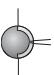
Remote 24 V driver Options:

580 Remote 25W LED driver and box

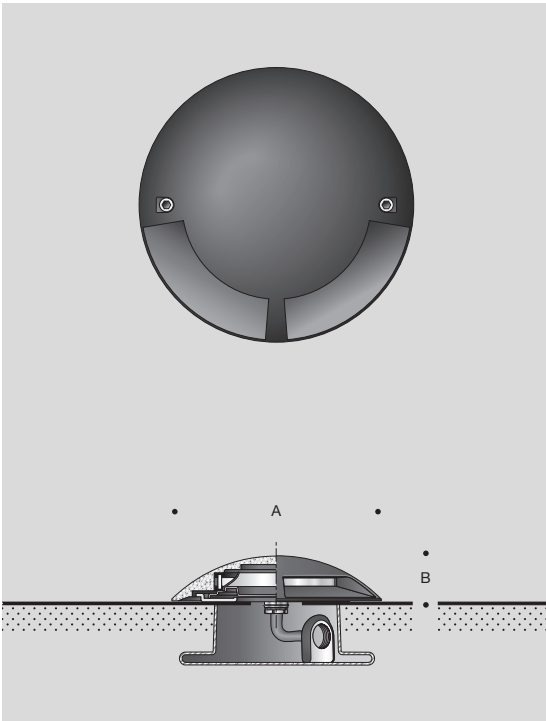
591 Remote 50W dimming LED driver and box



The ground-mounted luminaires mount directly to BEGA in-ground wiring box.

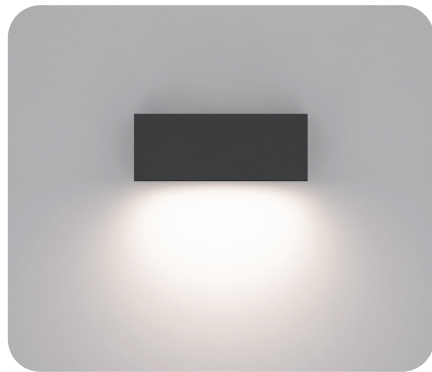
	180° port		
	Lamps	A	B
	77 069* 1.3W LED	6 $\frac{3}{8}$	1 $\frac{1}{2}$
*Remote 24V driver required			

Type:
BEGA Product:
Project:
Voltage:
Color:
Options:
Modified:



UGI-31611

Gino 4



Physical Data

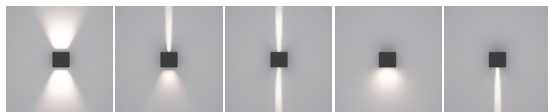
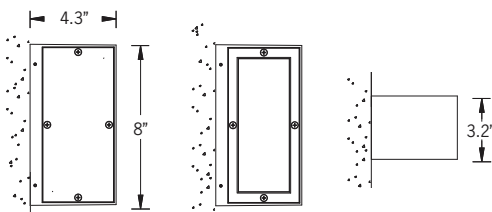
Length • 8"

Height • 3.2"

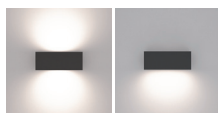
Weight • 3.5 lbs

IP65 • Suitable For Wet Locations

IK04 • Impact Resistant (Vandal Resistant)



UGI - 31582 UGI - 31583 UGI - 31584 UGI - 31591 UGI - 31593



UGI - 31601 UGI - 31611

A range of small, square and rectangular wall mounted luminaires with options of upward or downward light distributions. Ideally suited to illuminate the wall and surfaces in front of wall and for light accents on vertical surfaces using high efficiency LED's. The Gino is suitable for indoor and outdoor applications and provides a clean, visually appealing solution for small, unobtrusive wall mounted luminaires. This luminaire is available in 2 different sizes and in combinations of down, up or up/down light distributions. The Gino 1 and Gino 2 have a decorative spike option for added lighting effects. The Gino 3 and 4 mounts over a 2"x4" switchbox mounted horizontally. Added securing holes are provided to secure the luminaire to the wall surface. Frosted or clear lenses are available.

Aluminum Casting

Less than 0.1% copper content – Marine Grade LM6 Aluminum High Pressure die casting provides excellent mechanical strength, clean detailed product lines and excellent heat dissipation.

Pre paint

8 step degrease and phosphate process that includes deoxidizing and etching as well as a zinc and nickel phosphate process before product painting.

Memory Retentive -Silicon Gasket.

Provided with special injection molded "fit for purpose" long life high temperature **memory retentive silicon gaskets**. Maintains the gaskets exact profile and seal over years of use and compression.

Thermal management.

LM6 Aluminum is used for its **excellent mechanical strength and thermal dissipation properties** in low and high ambient temperatures. The superior thermal heat sink design by Ligman used in conjunction with the driver, controls thermals below critical temperature range to ensure maximum luminous flux output, as well as providing long LED service life and ensuring less than 10% lumen depreciation at 50,000 hours.

Surge Suppression

Standard 10kv surge suppressor provided with all fixtures.

BUG Rating

Contact Factory

Finishing

All Ligman products go through an extensive finishing process that includes fettling to improve paint adherence.

Paint.

UV Stabilized 4.9Mil thick powder coat paint and baked at 200 Deg C.

This process ensures that Ligman products can withstand harsh environments. Rated for use in natatoriums.

Hardware.

Provided Hardware is **Marine grade 316 Stainless steel**.

Anti Seize Screw Holes

Tapped holes are infused with a **special anti seize compound** designed to prevent seizure of threaded connections, due to electrolysis from heat, corrosive atmospheres and moisture.

Crystal Clear Low Iron Glass Lens.

Provided with tempered, impact resistant **crystal clear low iron glass** ensuring no green glass tinge.

Optics & LED

Precise optic design provides **exceptional light control and precise distribution of light**. LED CRI > 80

Lumen - Maintenance Life

L80 /B10 at 50,000 hours (This means that at least 90% of the LED still achieve 80% of their original flux)

Standard Options

Lamp

8w LED

564 Lumens

LED Color

W27 • 2700K

W30 • 3000K

W40 • 4000K

Finish Color

01 - Black - RAL 9011

02 - Dark Grey - RAL 7043

03 - White - RAL 9003

04 - Metallic Silver - RAL 9006

05 - Matte Silver - RAL 9006

06 - Bronze - RAL 6014

07 - Custom RAL

01

02

03

04

05

06

07

Lens

C • Clear

F • Frosted

Options (Consult Factory for Pricing)

4J - Mounting Plate for 4" Junction Box

Ordering Example : UGI - 31611 - 8w - W30 - 02 - 120/277v - Options

	Lamp	LED Color	Color	Lens	Voltage	Options
UGI	31611	8w LED				
		W27 2700K W30 3000K W40 4000K	01 Black 02 Dark Grey 03 White 04 Metallic Silver 05 Matte Silver 06 Bronze 07 Custom RAL	C Clear Lens F Frosted Lens	120/277v Other (Specify)	4J Mounting Plate for 4" JBox

PROJECT: DATE: QUANTITY:

TYPE: NOTE:

Ligman Lighting USA reserves the right to change specifications without prior notice, please contact factory for latest information. Due to the continual improvements in LED technology data and components may change without notice.

Head Office:

7144 NW Progress Ct
Hillsboro, Oregon 97124

Tel: 503-645-0500

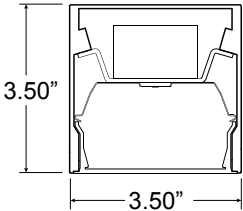
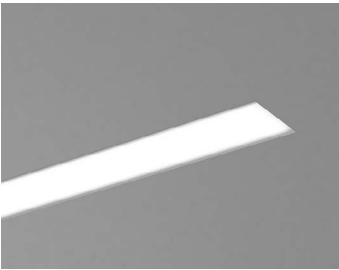
Fax: 503-645-8100

www.ligmanlightingusa.com



Intertek





PERFORMANCE AT 4000K

OUTPUT	LENS	NOMINAL LUMEN OUTPUT	INPUT WATTS	EFFICACY
High	HE Tech	829 lm/ft	10 W/ft	85 lm/W
	WISP	665 lm/ft	10 W/ft	70 lm/W
Standard	HE Tech	414.5 lm/ft	5 W/ft	85 lm/W
	WISP	332.5 lm/ft	5 W/ft	70 lm/W

Please consult factory for custom lumen output and wattage.

ORDERING CODE

D5

PROJECT INFO

TYPE

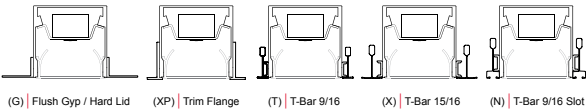
DATE

QUANTITY

LIGHT LOSS FACTORS

	OUTPUT	LED CCT	CRI
BASELINE	LH	4000K	80+ CRI
	LS - 50%	3500K - 97%	90+ CRI - 80%
		3000K - 93%	

MOUNTING OPTIONS



D5						
SERIES	LENGTH OR PATTERN TYPE		OUTPUT	LED CCT	VOLTAGE	DIRECT OPTICS
D5	_	Nominal Length*	LS LED Standard Output	30 3000K	U Universal 120V - 277V	HE HE Tech™
	M_	Exact Length**	LH LED High Output	35 3500K	3 347V	KS Awash Kicker + WISP
	PL_	"L" Shape Flat***	C_ LED Custom Output*	40 4000K		
	PLCW_	"L" Wall to Ceiling***				
	PLWW_	"L" Wall to Adjacent Wall***				
	PU_	"U" Shape Flat***				
	PUCW_	"U" Wall to Ceiling to Wall***				
	PUWW_	"U" Wall to Wall to Wall***				
	PR_	Rectangle / Square***				
	*Specify in feet to the nearest foot (i.e. N12)					
**Specify in inches to then nearest 1/8 (i.e. M180.125)						
***Specify in inches to the nearest 1/8 (See Pattern Guide for details)		*Available from 25% to 125% of LED High Output				

MOUNTING	FINISH*	DIMMING	EMERGENCY	SENSORS
G Flush Gyp / Mud Over Flange RG 1" Regressed Gyp / Mud Over Flange XP 1/2" Trim Flange T T-Bar 9/16" X T-Bar 15/16" N T-Bar 9/16 Slot T4 4" On Center Standard T-Bar 9/16" N4 4" On Center Slot T-Bar 9/16"	T a•lightanium™ W Satin White B Satin Black O_ Other**	D Standard 0-10 dimming* D1 Lutron Eco H series (LDE1) D3 Other Dimming**	EC Emergency - circuited E_ Emergency - battery*	O Occupancy Sensor* P Photocell / Daylight Sensor** OP Occupancy & Daylight Sensor
*Housing slightly regressed	*RG, XP, T4, N4 mounting types only **Specify RAL#	*Dimming to 1% stated for standard 0-10v dimming **Specify model/series	*(1) ILB-SL-CP12 (1200lm for 90min). Specify desired quantity of batteries. Not available on fixtures < 4" length. Not available for 347V.	Wattstopper FS-205 (Ø1") Wattstopper FD-301 wired for daylight harvesting. Requires 0-10v dimming.

OPTIONS
MRL_ MR16 LED* MRH_ MR16 Halogen* M Multi-Circuit** N New York City Code K Natatorium Application Q Wet Location (Contact Design Assist) CRI 90+ CRI CP Chicago Plenum
*Enter quantity. Submit MR16 addendum **Submit multi-circuiting requirements

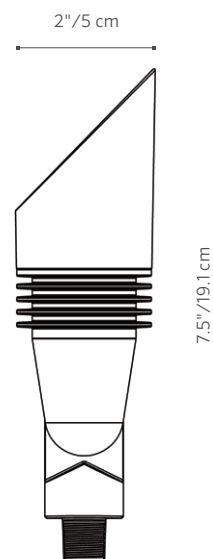


Similar in style to its bigger brother the NP, the FB fits nicely into smaller landscapes and tight spaces. Accommodating up to a 3 LED Board, the FB offers all the same up light benefits of the NP in a more compact package.

FB: Up Light

NUMBER OF LEDS:	1	3	ZDC
HALOGEN LUMEN OUTPUT EQUIVALENT:	10 Watt	20 Watt	10 Watt
USEFUL LED LIFE (L70):	50,000 hrs avg	50,000 hrs avg	50,000 hrs avg
INPUT VOLTAGE:	10 to 15V	10 to 15V	11 to 15V
VA TOTAL*:	2.4	4.5	7.2
WATTS USED:	2.0	4.2	6.0
LUMENS PER WATT (EFFICACY):	31	40	28
TOTAL LUMENS:	60	155	90
CRI (Ra):	79	78	81
CBCP (CENTER BEAM CANDLE POWER):	233	621	120
CCT:			
AMBER FILTER	2700K	2700K	N/A
FROSTED FILTER	3900K	3900K	N/A
GREEN FILTER	4500K	4500K	N/A
BLUE FILTER	5200K	5200K	N/A

*(Use this number to size the transformer)





FB: Up Light

FACTORY INSTALLED OPTIONS: Order 1 + 2 (optional) + 3 + 4

Step	Description	Code
1	FIXTURE	FB
2	LUXOR OPTION	ZD, ZDC [†] (Color)
3	LAMP	1LED, 3LED, _____ [†]
4	FINISH	WG, FW, AL, BZ, DG, WI, SB, FB

EXAMPLE: **FB-ZD-3LED-SB** = FB - ZD Option - 3LED Board - Sedona Brown Finish

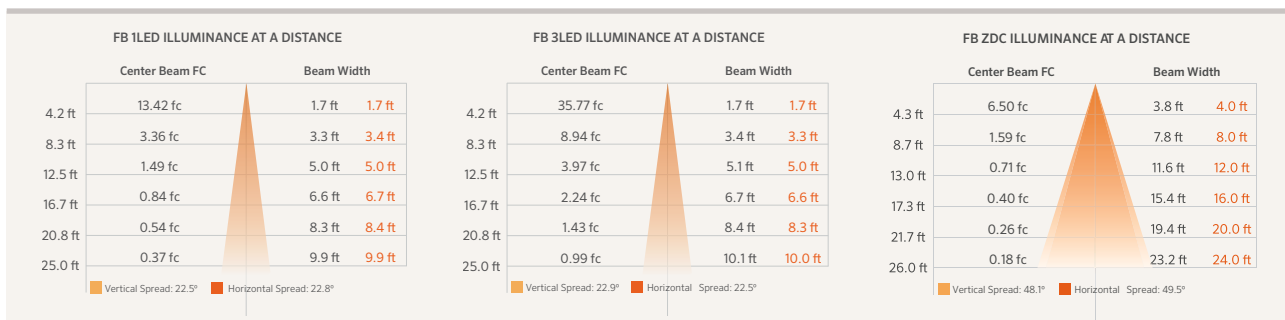
[†]Fixtures specified with ZDC Technology™ are available only in one circuit board configuration.
Do not specify a number of LEDs when ordering.

FIELD INSTALLED OPTIONS: Order Individually

Mounts	Lens Accessories		
Super Slot Spike (Included) (753900) 2" x 7"	LENS OPTIONS	1LED	3LED
Long Slot Spike (250015840000) 2.5" x 10"	Diffuser 18° (preassembled)	770600	771300
SuperJ-Box (SJ-XX**) 2.5" x 12"	Flood Lens 30-32° (1 notch)	1LEDFLENS	3LEDFLENS
Post Mount (PM-XX**) 2.5" x 13"	Wide Flood Lens 56-58° (2 notches)	1LEDWFLLENS	3LEDWFLLENS
Mini J-Box (MJ-050-XX**) 3.5" x 1.3"	Hex Baffle MR-16 Size	250015260000	250015260000
TreeBox (TB-XX**) 5.4" x 1.9"	Linear Spread Lens MR-16 Size	250013550000	250013550000
Gutter Mount (GM-SS) 4.0" x 4.0"	Solite Spread Lens MR-16 Size	250015240000	250015240000
Wall Plate: 1-gang (WP-1G-050-XX**) 3.4" x 5.1"			
Wall Plate: Round (WP-RD-050-XX**) 5.0" Diam.			
Coupling: Straight (COUP-XX**) 1.3" x 2.0"			
Coupling: 90-deg (ELBW-050-SS**) 1.3" x 2.0"			
Coupling: T-mount (TMNT-050-XX**) 3.0" x 2.2"			
Riser: Male Threaded (YY-R-XX) 0.8" Diam., ½ NPSM			

EXAMPLE: **250015840000** = Long Slot Spike

PHOTOMETRICS:



POWDER COAT

	WG = White Gloss
	FW = Flat White
	AL = Almond
	BZ = Bronze Metallic
	DG = Desert Granite
	WI = Weathered Iron
	SB = Sedona Brown
	FB = Flat Black

The FB includes choice of LED board, choice of finish, 4 ft lead wire and a Super Slot Spike.

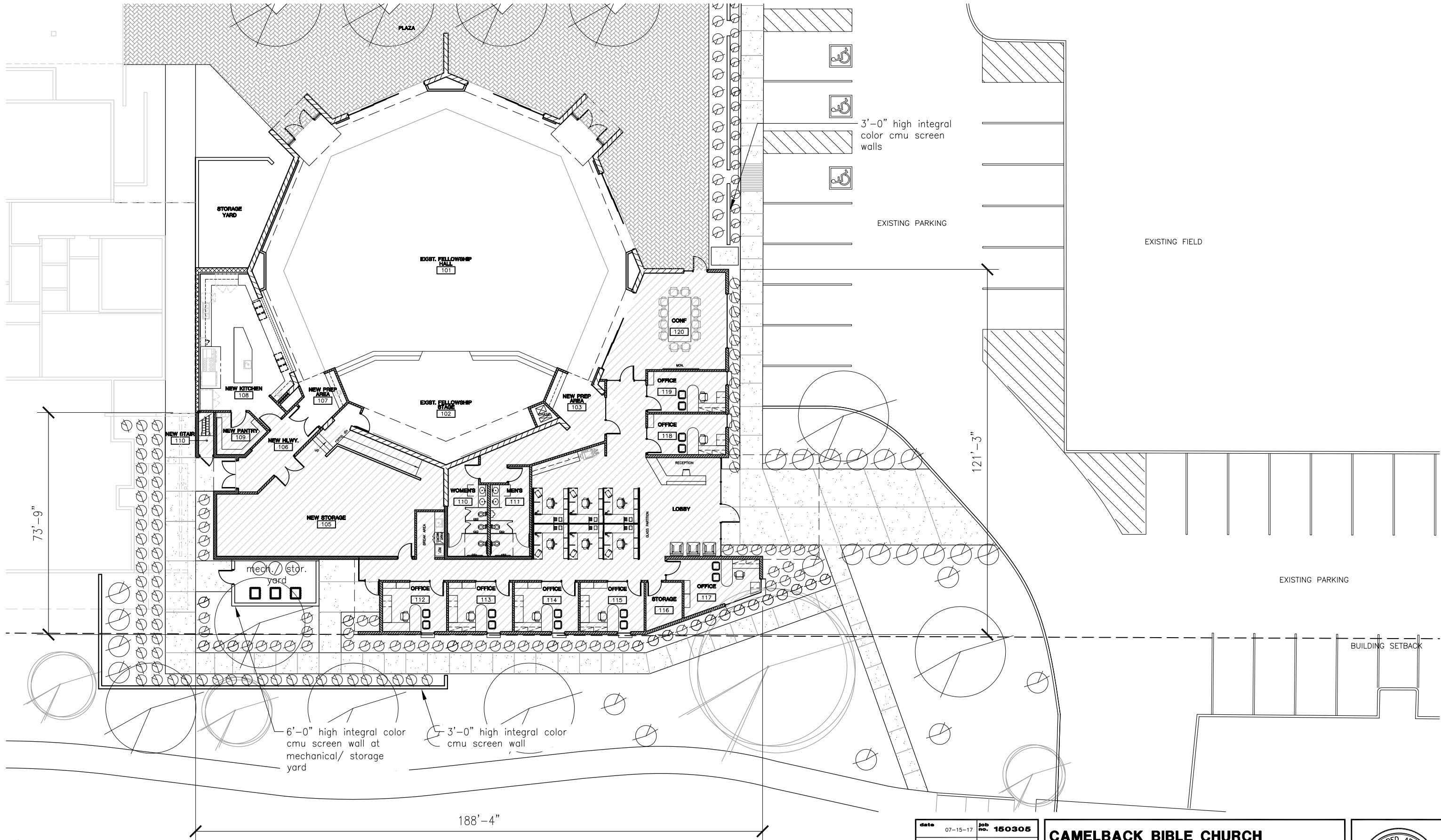


All FB up lights come standard with amber, green, blue and frosted filters

** Denotes finish code

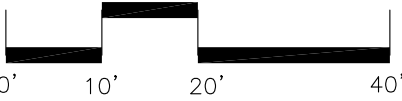
Beam angle is calculated using LM-79 method for SSL Luminaires: "Beam angle is defined as two times the vertical angle at which the intensity is 50% of the maximum."





5,000SF STORAGE AREA & ADMINISTRATION ADDITION

FELLOWSHIP HALL FLOOR PLAN



SCALE: 1"=20'-0"




date	07-15-17	job no.	150305
drawn by	SC/ST	checked by	LE
SHEET TITLE			
REVISION			
THIS DRAWING IS AN INSTRUMENT OF SERVICE. IT REMAINS THE PROPERTY OF LAWRENCE ENTART, ARCHITECT. IT MAY NOT BE REPRODUCED OR COPIED IN WHOLE OR IN PART WITHOUT THE EXPRESSED WRITTEN PERMISSION OF LAWRENCE ENTART, ARCHITECT. IT MAY ONLY BE USED FOR THE ORIGINAL PURPOSE INTENDED. ALL RIGHTS RESERVED. © Copyright 2017, LEA-Architects, LLC			

**CAMELBACK BIBLE CHURCH
FELLOWSHIP HALL ADDITION**

**3902 E. STANFORD
PARADISE VALLEY, AZ**

**LEA - Architects, LLC**
1730 EAST NORTHERN PHOENIX, AZ
ARCHITECTURE PLANNING INTERIORS CONSTRUCTION MGMT.



REGISTERED ARCHITECT
LAWRENCE ENTART
ARIZONA, U.S.A.

EXPIRES 09/30/17
**PRELIMINARY
NOT FOR
CONSTRUCTION**

Camelback Bible Church Fellowship Hall Addition
view north-west towards administration entry

13'-0"
T.O. PARAPET

17'-8"
T.O. ROOF

Weathering steel plate
window hoods

8x4x16 Integral color
stacked bond cmu

Weathering copper
standing seam panels

Insulated window

Wood tongue & groove
soffit



LEA - ARCHITECTS, LLC

PHOENIX, ARIZONA

© 2017

WWW.LEA-ARCHITECTS.COM

date	07-15-17	job no.	150305
drawn by	SC/ST	checked by	LE
SHEET TITLE			
REVISION			
THIS DRAWING IS AN INSTRUMENT OF SERVICE. IT REMAINS THE PROPERTY OF LAWRENCE ENYART, ARCHITECT. IT MAY NOT BE REPRODUCED OR COPIED IN WHOLE OR IN PART WITHOUT THE EXPRESSED WRITTEN PERMISSION OF LAWRENCE ENYART, ARCHITECT. IT MAY ONLY BE USED FOR THE ORIGINAL PURPOSE INTENDED. ALL RIGHTS RESERVED.			
© Copyright 2017, LEA Architects, LLC			

CAMELBACK BIBLE CHURCH
FELLOWSHIP HALL ADDITION


3902 E. STANFORD
PARADISE VALLEY, AZ



LEA - Architects, LLC

1730 EAST NORTHERN PHOENIX, AZ

ARCHITECTURE PLANNING INTERIORS CONSTRUCTION MGMT.



EXPIRES 09/30/17

PRELIMINARY
NOT FOR
CONSTRUCTION

Camelback Bible Church Fellowship Hall Addition
south elevation - view from stanford drive





LEA - ARCHITECTS, LLC

PHOENIX, ARIZONA

© 2017

WWW.LEA-ARCHITECTS.COM

date	07-15-17	job no.	150305
drawn by	SC/ST	checked by	LE
SHEET TITLE			
REVISION			
THIS DRAWING IS AN INSTRUMENT OF SERVICE. IT REMAINS THE PROPERTY OF LAWRENCE ENYART, ARCHITECT. IT MAY NOT BE REPRODUCED OR COPIED IN WHOLE OR IN PART WITHOUT THE EXPRESSED WRITTEN PERMISSION OF LAWRENCE ENYART, ARCHITECT. IT MAY ONLY BE USED FOR THE ORIGINAL PURPOSE INTENDED. ALL RIGHTS RESERVED.			
© Copyright 2017, LEA-Architects, LLC			

CAMELBACK BIBLE CHURCH
FELLOWSHIP HALL ADDITION


3902 E. STANFORD
PARADISE VALLEY, AZ



LEA - Architects, LLC

1730 EAST NORTHERN PHOENIX, AZ

ARCHITECTURE PLANNING INTERIORS CONSTRUCTION MGMT.



EXPIRES 09/30/17

PRELIMINARY
NOT FOR
CONSTRUCTION

Camelback Bible Church Fellowship Hall Addition
east elevation - view from parking area





LEA - ARCHITECTS, LLC

PHOENIX, ARIZONA

© 2017

WWW.LEA-ARCHITECTS.COM

date	07-15-17	job no.	150305
drawn by	SC/ST	checked by	LE
SHEET TITLE			
REVISION			
THIS DRAWING IS AN INSTRUMENT OF SERVICE. IT REMAINS THE PROPERTY OF LAWRENCE ENYART, ARCHITECT. IT MAY NOT BE REPRODUCED OR COPIED IN WHOLE OR IN PART WITHOUT THE EXPRESSED WRITTEN PERMISSION OF LAWRENCE ENYART, ARCHITECT. IT MAY ONLY BE USED FOR THE ORIGINAL PURPOSE INTENDED. ALL RIGHTS RESERVED.			
© Copyright 2017, LEA Architects, LLC			

CAMELBACK BIBLE CHURCH
FELLOWSHIP HALL ADDITION

3902 E. STANFORD
PARADISE VALLEY, AZ



LEA - Architects, LLC

1730 EAST NORTHERN PHOENIX, AZ

ARCHITECTURE PLANNING INTERIORS CONSTRUCTION MGMT.

EXPIRES 09/30/17

PRELIMINARY
NOT FOR
CONSTRUCTION

Camelback Bible Church - Fellowship Hall Addition

(preliminary landscape plan)

project consultants

landscape architect:

DESIGN ETHIC, LLC
7201 E. CAMELBACK #250
SCOTTSDALE, ARIZONA 85251
CONTACT: BRANDON PAUL
PHONE: 480.225.7077
EMAIL: bpaul@designethic.net

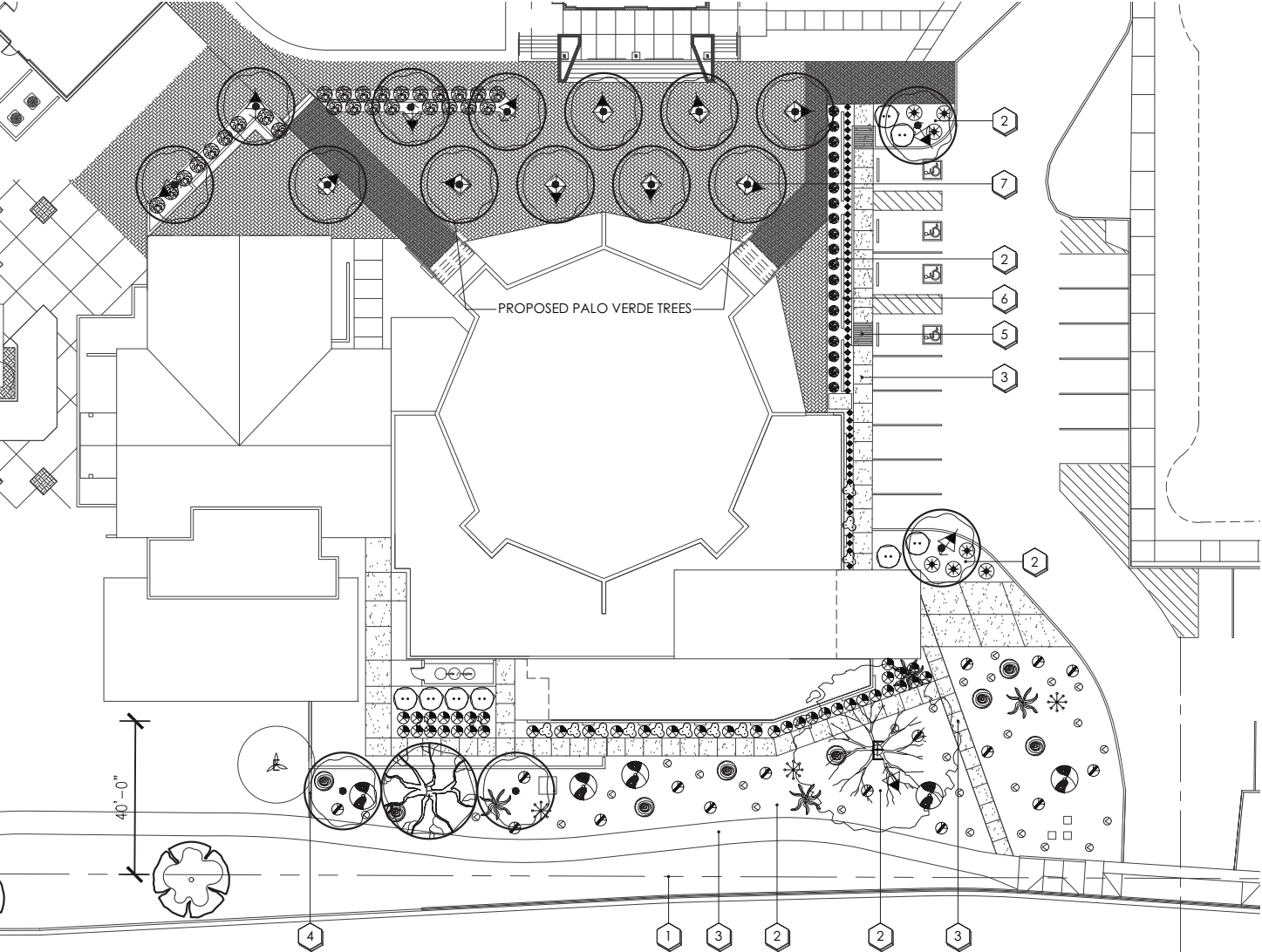
architecture:

LEA - ARCHITECTS, LLC
1730 E. NORTHERN AVE, SUITE 110
PHOENIX, AZ 85020
PROJECT CONTACT: LANCE ENYART
PHONE: 602.943.7511
EMAIL: lance@lea-architects.com

site data

ZONING:
NET SITE AREA:

SUP-P
9.57 ACRES



planting key notes

- 1 PROPERTY LINE / RIGHT OF WAY LINE
- 2 DECOMPOSED GRANITE IN ALL PLANTING AREAS
- 3 SIDEWALK.
- 4 CONCRETE HEADER. SEE SHEET L, DETAIL.
- 5 ACCESSIBLE RAMP. SEE CIVIL ENG. PLANS.
- 6 SCREEN WALL. SEE ARCH. PLANS.
- 7 LOW VOLTAGE LIGHTS, TYP. 15 TOTAL; SEE LIGHTING LEGEND FOR REFERENCE.

existing plant legend

	botanical name	common name
	PROSOPIS CHILENSIS	'THORNLESS' THORNLESS CHILEAN MESQUITE
	PROSOPIS PUBESCENS	SCREWBEAN MESQUITE
	PYRUS CALLERYANA	EVERGREEN PEAR
	ULMUS PARVIFOLIA	EVERGREEN ELM

plant legend

	botanical name	common name
	PARKINSONI HYBRID 'AZT'	'AZT' THORNLESS PALO VERDE
	CORDIA PARVIFOLIA	LITTLELEAF CORDIA
	ENCELIA FARINOSA	BRITTLEBUSH
	ERICAMERIA LARICIFOLIA	TURPENTINE BUSH
	LARREA TRIDENTATA	CREOSOTE
	OLEA EUROPAEA 'LITTLE OLLIE'	LITTLE OLLIE DWARF OLIVE

	ALOE X. BLUE ELF	BLUE ELF ALOE
	FEROACTUS CYLINDRACEUS	COMPASS BARREL
	FOQUIERIA SPLENDENS	OCOTILLO
	MUHLENBERGIA CAPILLARIS	REGAL MIST
	LOPHOCEREUS SCHOTTII	MONSTROSE TOTEM POLE CACTUS
	OPUNTIA ENGELMANNII	ENGELMANN'S PRICKLY PEAR
	PEDILANTHUS MACROCARPUS	SLEPPER PLANT

	AMBROSIA DELTOIDEA	BURSAGE
	SPHAGNETICOLA TRILOBATA	YELLOW DOT
	1" MINUS DECOMPOSED GRANITE	TABLE MESA BROWN
	CONCRETE HEADER	PLAIN CONCRETE

FXLuminaire.



FB: Up Light

NUMBER OF LEDS	1	3	20C
HALOGEN LUMEN OUTPUT EQUIVALENT	10 Watt	20 Watt	10 Watt
USEFUL LED LIFE (HRS)	50,000 hrs avg	50,000 hrs avg	50,000 hrs avg
INPUT VOLTAGE	5 to 15V	5 to 15V	5 to 15V
VA TOTAL	3.4	4.5	7.2
WATTS USED	2.0	4.2	5.0
LUMENS PER WATT EFFICIENCY	35	45	28
TOTAL LUMENS	70	185	90
CRI DRG	79	79	81
CRCP	FLUORESCENT BEAM CANDLE POWER	338	8.01
ICCT			120
AMBER FILTER	2700K	2700K	N/A
FROSTED FILTER	2800K	2800K	N/A
GREEN FILTER	4000K	4000K	N/A
BLUE FILTER	5200K	5200K	N/A

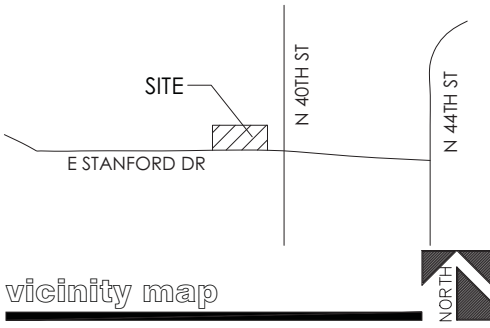


LANDSCAPE LIGHTING

A Hunter Industries Company

lighting legend

SYMBOL	FIXTURE APPLICATION	PART NUMBER	DESCRIPTION	WATTS	LUM	QTY
	UPLIGHT	FB-ZD-1LED-NP	NICKEL, 1LED BOARD, COLOR FILTERS, 4.5 VA, GROUND MOUNT SPIKE, NICKEL PLATE FINISH	4.2	155	15
	TRANSFORMER	LZD-300-M	STAINLESS STEEL, 300W, DIGITAL ZONING AND DIMMING CONTROL W/ LCD DISPLAY			-



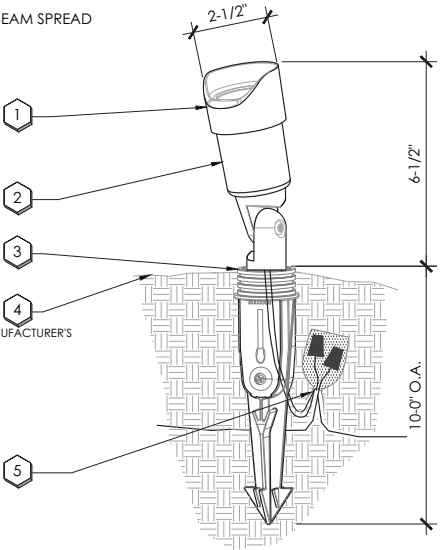
vicinity map

KEYNOTES:

- 1 UP LIGHT FIXTURE: SEE PLAN LEGEND FOR WATTAGE, BEAM SPREAD AND ACCESSORIES.
- 2 AIM FIXTURE A MINIMUM OF 10° OFF VERTICAL TO ALLOW WATER AND DIRT TO DRAIN OFF LENS CAP
- 3 CDS MOUNT
- 4 FINISHED GRADE
- 5 LOW VOLTAGE CABLE WITH LITESPUCE, LEAVE 18" MIN. LOOP COILED BELOW FIXTURE FOR SERVICE

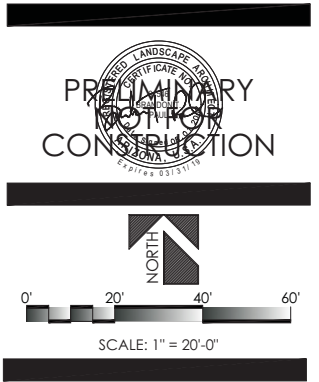
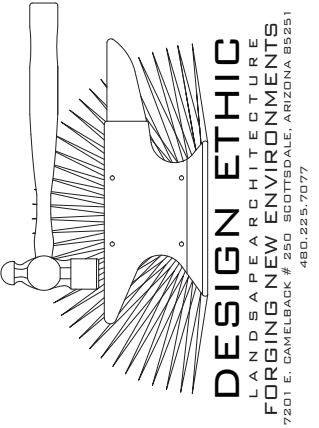
NOTES:

1. INSTALLATION TO BE COMPLETED IN ACCORDANCE WITH MANUFACTURER'S SPECIFICATIONS.



A CDS MOUNT UP LIGHT

NOT TO SCALE



CAMELBACK BIBLE CHURCH
3902 EAST STANFORD DRIVE
PARADISE VALLEY, AZ 85253

PROJECT:

SHEET TITLE:

JOB NO: 17-035
DATE:
DRAWN BY: B. PAUL
SUBMITTED: 08.01.2017
REVISED:

SHEET