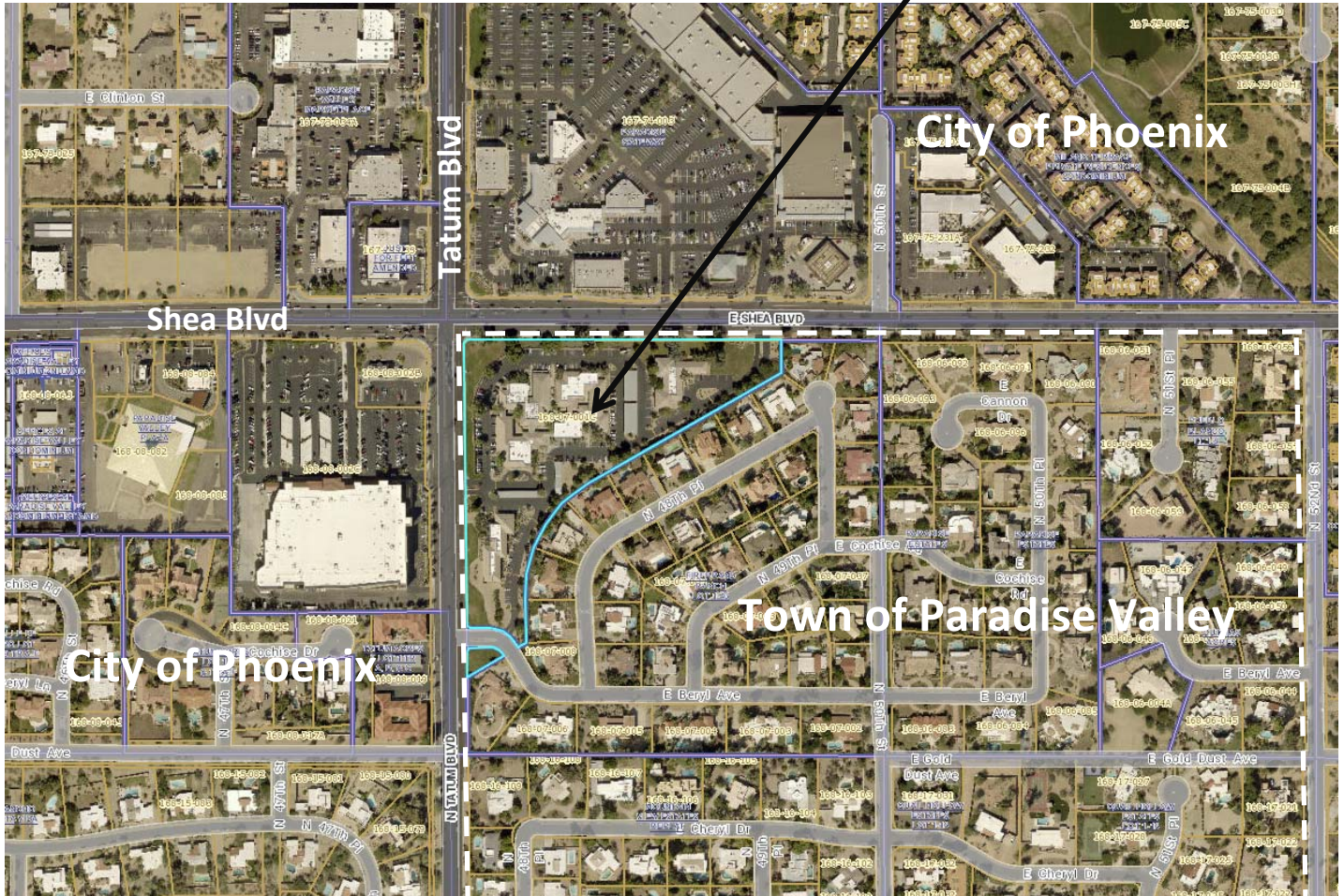




# VICINITY MAP

Subject Property



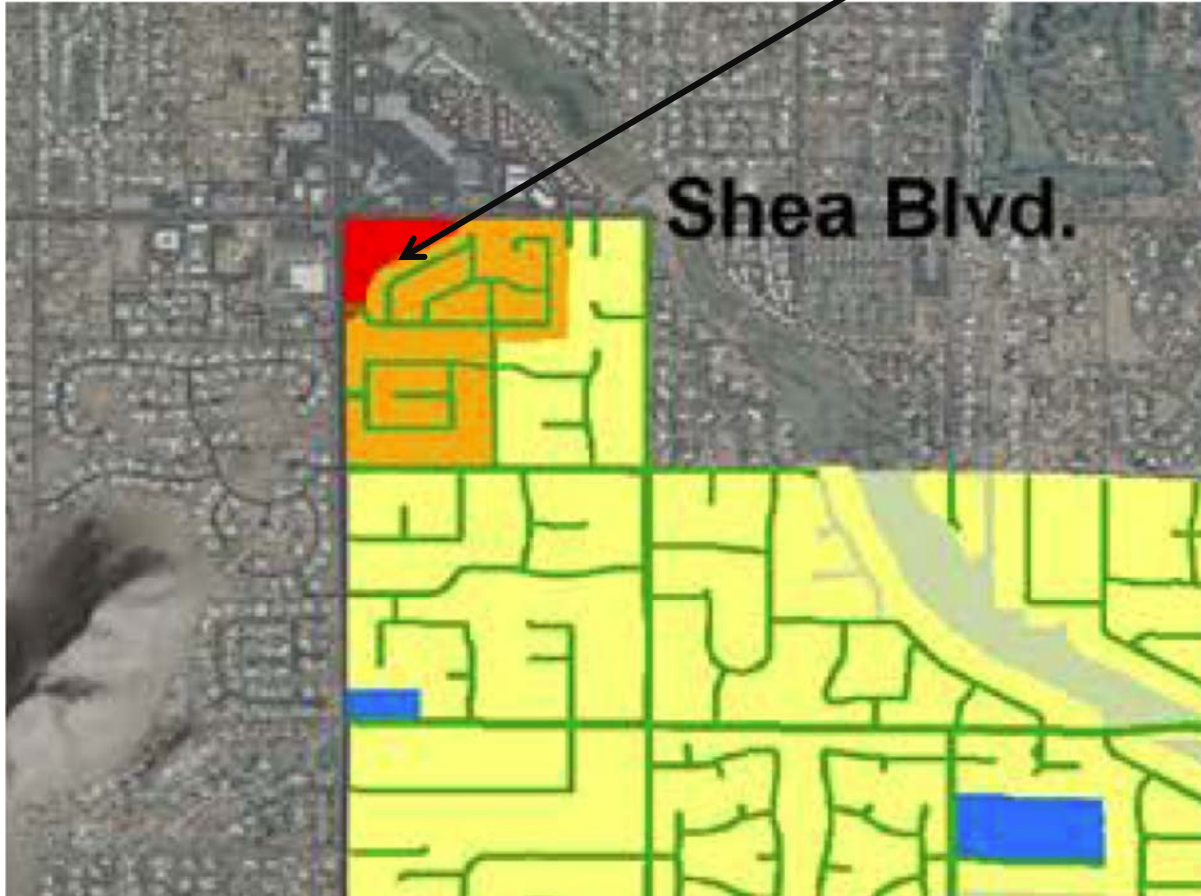
Mountain View Medical Center SUP

10555 N Tatum Boulevard



# GENERAL PLAN

Subject Property



## Legend

- |  |                     |
|--|---------------------|
| Low Density Residential OR Resort/Country Club | Private Open Space  |
| Private Open Space OR Resort/Country Club      | Public Open Space   |
| Very Low Density Residential                   | Medical Office      |
| Low Density Residential                        | Public/Quasi Public |
| Medium Density Residential                     | Resort/Country Club |

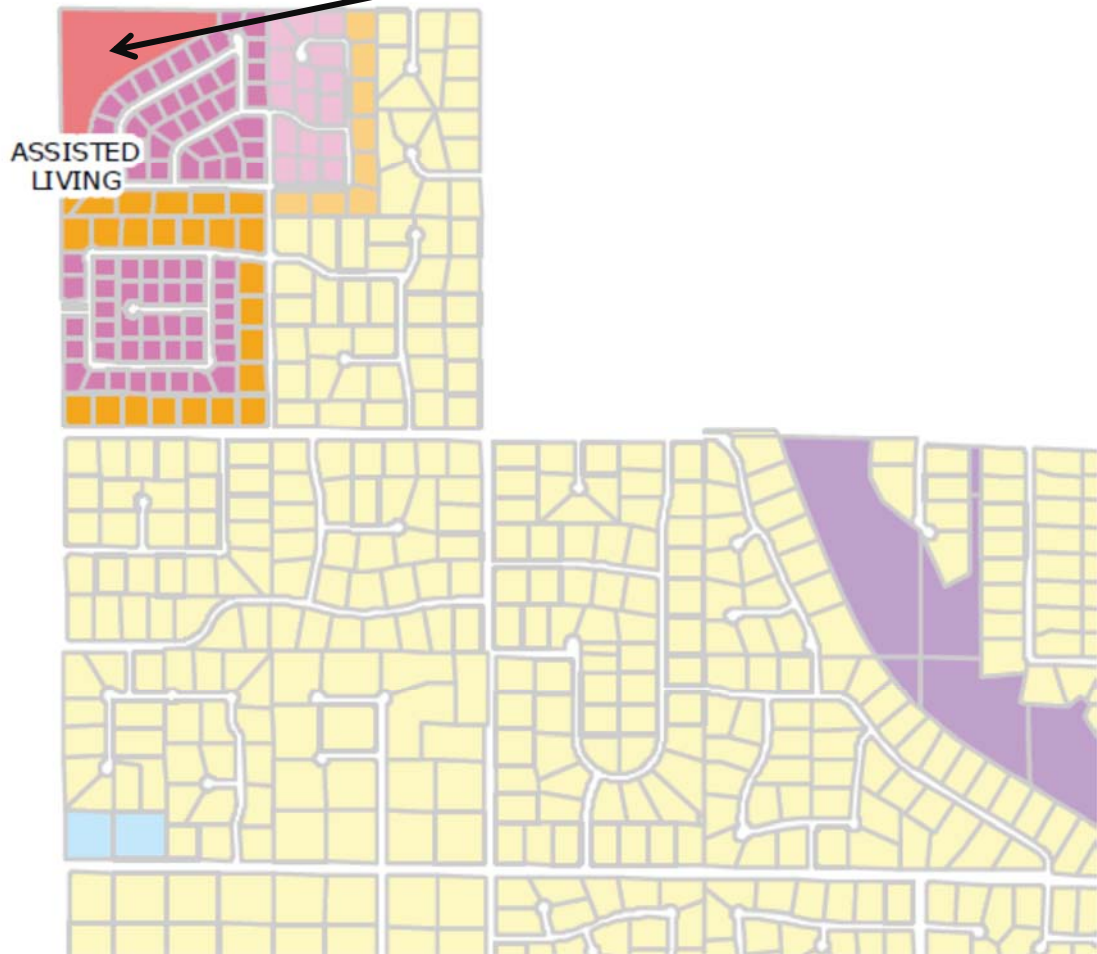
Mountain View Medical Center SUP

10555 N Tatum Boulevard



# ZONING

Subject Property



**Legend  
Zoning**

- |        |        |       |                                  |                                   |
|--------|--------|-------|----------------------------------|-----------------------------------|
| R-175  | R-35   | R-18  | R-18CP                           | SUP-R Special Use Permit- Resort  |
| R-43   | R-35CP | R-18A | SUP-P Special Use Permit- Public | SUP-O Special Use Permit- Medical |
| R-43CP | R-35A  | R-10  | OSP- Open Space Preserve         | Hillside                          |



Mountain View Medical Center SUP  
10555 N Tatum Boulevard