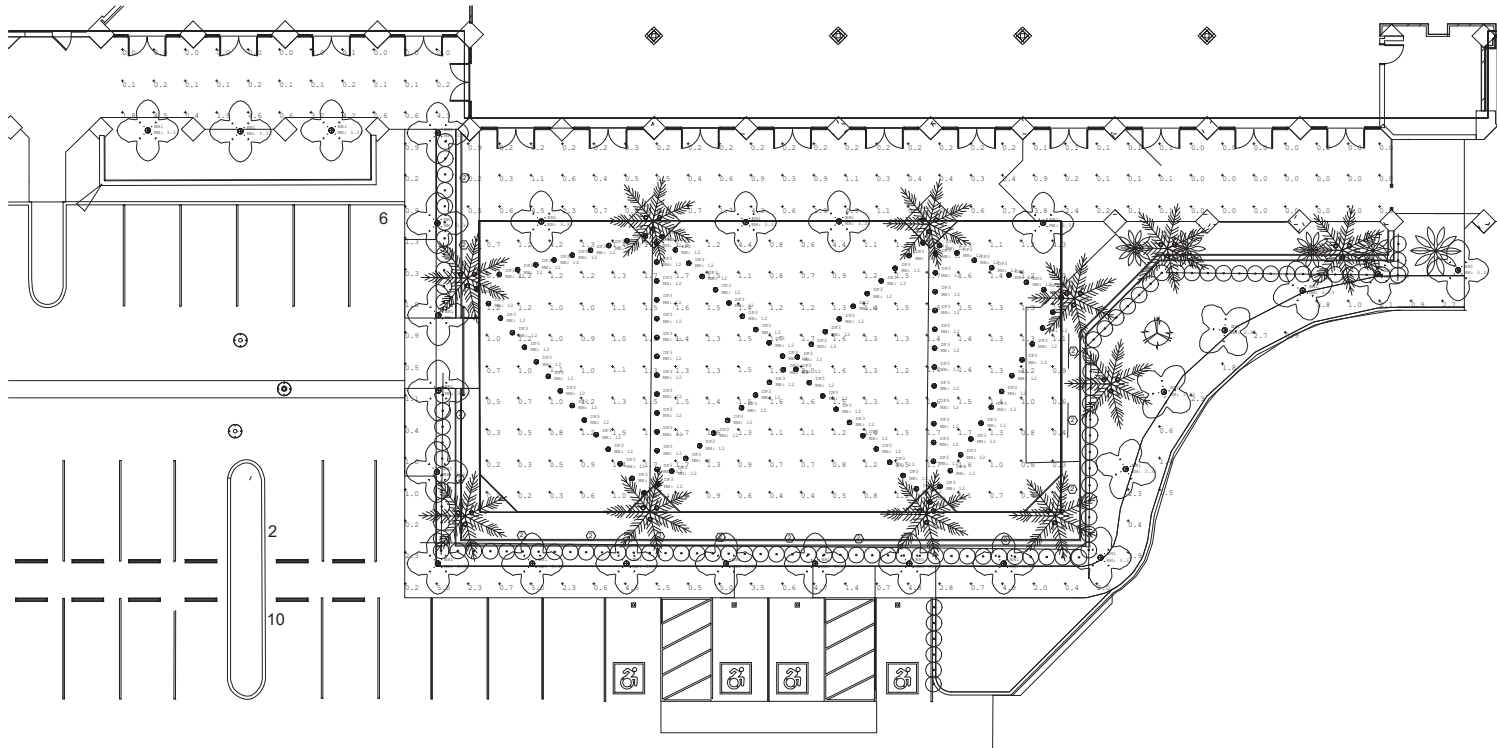


LUMINAIRE SCHEDULE											
SYMBOL	QTY	LABEL	ARRANGEMENT	DESCRIPTION	MANUFACTURER	KELVINS	LLF	LUMINAIRE LUMENS	LUMINAIRE WATTS	TOTAL WATTS	NOTES
○	10	AL3	GROUP	TREE MOUNT LIGHT	AR-TM4-OP-LHP-AL-CA-F32-SIZE-664-MFL-MLV-12-11-BRONZE WRINKLE	2700	0.900	399	6.8	204	INSTALL TO BE DIRECTED DOWNWARD
●	27	BH1	SINGLE	BOLLARD	LVA-10021-T5-W27-DM - 95 - LISMAN BRONZE	2700	0.900	531	20.6	556.2	
●	136	DP3	SINGLE	STING LIGHTS	LSA2-B-36-V-27-LUCPET_SHADE-OS-8K-8K-10-LSA4-LUC-PET	2700	0.900	96	1.07	145.52	

CALCULATION SUMMARY							
LABEL	CALCTYPE	UNITS	AVG	MAX	MIN	AVG / MIN	MAX / MIN
LAWN_TOP	ILLUMINANCE	Fc	1.35	32.8	0.2	6.75	164.00
WALKWAY_TOP	ILLUMINANCE	Fc	0.96	51.0	0.0	N.A.	N.A.



A1 CAMELBACK LAWN PHOTOMETRICS
SCALE: 1/8" = 1'-0"



5/16/2025 8:38:45 PM

ARTI STAR - Tree Mount - Low Voltage - LED High-Power



Downloads

- Product Images (.zip)
- Technical Drawing (.zip)
- IES Files (.zip)
- BIM - Revit (.zip)
- Installation Instructions (.pdf)

Product Variant Examples



ARTI STAR - Tree Mount - Low Voltage - LED High-Power

Available Logic & Configurations

AR- 01 **TM-** 02 **LOD-** 03 **LHP-** 04 **AL-** 05 **-** 06C **-** 06D **-** 06F

01 SERIES

AR - ARTI STAR

02 CATEGORY

TM - Tree Mount

03 DRIVER

LOD - Low Voltage

04 LIGHT SOURCE (TYPE)

LHP - LED High-Power

05 MATERIAL

AL - Aluminum

06C STYLE

CA - Cap A - 45° (With Weephole)

CB - Cap B - 90° (With Weephole)

CC - Cap C - Flush Lens

CF - Cap F - Extended Flush Lens

06D VERSION

F28 - 2 Fixtures @ 180°

F32 - 3 Fixtures @ 120°

F49 - 4 Fixtures @ 90°

F66 - 6 Fixtures @ 60°

06F SIZE

S16 - Strap: 16" min. to 22" max. tree diameter

S21 - Strap: 21" min. to 27" max. tree diameter

S26 - Strap: 26" min. to 32" max. tree diameter

S31 - Strap: 31" min. to 38" max. tree diameter

- 07 **-** 08 **MLV-** 09 **-** 10A **-** 10B **WL00-** 11 **-** 12

07 LIGHT SOURCE

e64 - 2700K CRI80 - 7W (397 - 456 lm)

e65 - 3000K CRI80 - 7W (406 - 466 lm)

e66 - 4000K CRI80 - 7W (456 - 524 lm)

e74 - Amber - 7W (260 - 299 lm)

e79 - 2700K CRI90 - 7W

e80 - 3000K CRI90 - 7W

e81 - 3500K CRI80 - 7W

08 OPTIC

NSP - Narrow Spot (13°)

SP - Spot (16°)

SP2 - Spot (23°)

MFL - Medium Flood (31°)

09 CONTROL

MLV - MLV Dimming (Magnetic Low Voltage)

10A LENS

12 - Soft Focus

13 - Rectilinear

10B SHIELDING

00 - Not included (Standard)

11 - Honeycomb Baffle

11 WIRING LENGTH

WL00 - Standard

12 FINISH

Standard Finishes

BLP, BZP, WHP, SAP, BLW, BZW, WHW, VER

Premium Finishes

CMG, SMG, RMG, AMG, TXF, BCM, BGE, WCP, OCP, HUG, ABP, BPP, SDS,

WIR, CAP, CRM, AQW, NBP

Other - RAL

RAL

Other - Custom Color

CUS

NOTE: Not all configurations may be compatible with one another. Please configure the product for specific 2D, Photometry, Downloads, Spec Sheet and Compatible mountings and power supplies.

ARTI STAR - Tree Mount - Low Voltage - LED High-Power

Features



Anti-condensation vent allows moisture to exit the fixture but never enter in



Lens factory adhered to fixture cap providing hermetically sealed optical compartment



Manufactured in the USA with sustainable processes



Aim & Lock knuckle eliminates need for re-aiming & adjustments



Water-tight anti-siphon plug prevents moisture ingress from wireways



Secured with tamper-resistant, stainless steel hardware



Easily replaceable modular components reduce waste and extend fixture life



Slip fit cap & high temp. silicone 'O' ring provides reliable water-tight seal



Solid billet fixture body provides unmatched durability and heat management

WARNING: This is a low voltage product. Please check "Mountings With A Power Supply" or "Power Supplies" to order remote transformer separately.

Technical

Driver: Low Voltage

Light Source (Type): LED High-Power

Material: Aluminum

CCT (K): Amber, 2700, 3500, 3000, 4000

CRI: 80, 90

Input Power (W): 7

Delivered Lumens (lm): 260 - 524

Beam Angle (°): 13, 16, 23, 31

Control: MLV Dimming (Magnetic Low Voltage)

Style: Cap A - 45° (With Weephole), Cap B - 90° (With Weephole), Cap C - Flush Lens, Cap F - Extended Flush Lens

Version: 2 Fixtures @ 180°, 3 Fixtures @ 120°, 4 Fixtures @ 90°, 6 Fixtures @ 60°

Size: Strap: 16" min. to 22" max. tree diameter, Strap: 21" min. to 27" max. tree diameter, Strap: 26" min. to 32" max. tree diameter, Strap: 31" min. to 38" max. tree diameter

Lens: Soft Focus, Rectilinear

Shielding: Not included (Standard), Honeycomb Baffle

Wiring Length: Standard

Finish: Standard Finishes, Premium Finishes, Other - RAL, Other - Custom Color

Body: Unibody design with enclosed, water-proof wireway, integral heat sink, fully machined from solid billet, anti-condensation and corrosion vent equalizes fixture pressure and eliminates potential for damage to internal components.

Material Detail: Tree Ring - 1/8" thick AISI 304 stainless steel. Fixture - copper-free aluminum (6061-T6).

Aiming: 180° vertical adjustment via 2 1/4" dia. knuckle. Mounting anchor base with set screws provides 360° horizontal rotation. Design withstands 73 lb. static load prior to movement for optical alignment. Fixture mounts via base plate.

Light Source Detail: High power LEDs modular design with electrical disconnects.

Optics: Interchangeable optics permit changes in the field.

Hardware: Tamper-resistant, stainless steel hardware. Luminaire hardware is black oxide treated for additional corrosion resistance.

Sealing: 'O' Ring provides water-tight seal., Anti-condensation and corrosion vent equalizes fixture pressure and eliminates potential for damage to internal components.

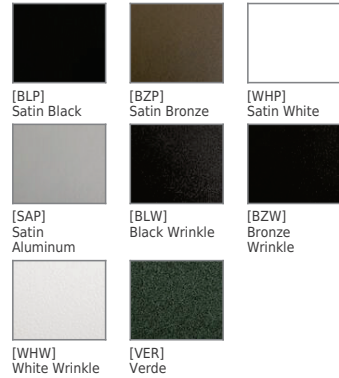
Finish Detail: StarGuard, our 15-stage chromate-free process, cleans and conversion coats aluminum components prior to application of Class 'A' TGIC polyester powder coating. It is RoHS compliant.

Warranty: 5-year limited warranty.

ARTI STAR - Tree Mount - Low Voltage - LED High-Power

Finishes

STANDARD FINISHES



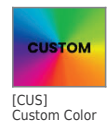
PREMIUM FINISHES



OTHER - RAL



OTHER - CUSTOM COLOR



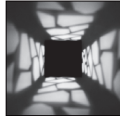
ARTI STAR - Tree Mount - Low Voltage - LED High-Power

Light Source

Light Source	Optic	Beam Angle	CCT (K)	CRI	R9	Input Power (W)	Delivered Lumens (Lm)	CBCP
e64	NSP - Narrow Spot	13	2700	80	>15	7	456	5993
e64	SP - Spot	16	2700	80	>15	7	445	4546
e64	SP2 - Spot	23	2700	80	>15	7	397	1726
e64	MFL - Medium Flood	31	2700	80	>15	7	399	1131
e65	NSP - Narrow Spot	13	3000	80	>15	7	466	6131
e65	SP - Spot	16	3000	80	>15	7	455	4650
e65	SP2 - Spot	23	3000	80	>15	7	406	1766
e65	MFL - Medium Flood	31	3000	80	>15	7	409	1157
e66	NSP - Narrow Spot	13	4000	80	>15	7	524	6889
e66	SP - Spot	16	4000	80	>15	7	511	5225
e66	SP2 - Spot	23	4000	80	>15	7	456	1984
e66	MFL - Medium Flood	31	4000	80	>15	7	459	1300
e74	NSP - Narrow Spot	13	Amber			7	299	3927
e74	SP - Spot	16	Amber			7	291	2978
e74	SP2 - Spot	23	Amber			7	260	1131
e74	MFL - Medium Flood	31	Amber			7	262	741
e79	NSP - Narrow Spot	13	2700	90	>50	7		
e79	SP - Spot	16	2700	90	>50	7		
e79	SP2 - Spot	23	2700	90	>50	7		
e79	MFL - Medium Flood	31	2700	90	>50	7		
e80	NSP - Narrow Spot	13	3000	90	>50	7		
e80	SP - Spot	16	3000	90	>50	7		
e80	SP2 - Spot	23	3000	90	>50	7		
e80	MFL - Medium Flood	31	3000	90	>50	7		
e81	NSP - Narrow Spot	13	3500	80	>15	7		
e81	SP - Spot	16	3500	80	>15	7		
e81	SP2 - Spot	23	3500	80	>15	7		
e81	MFL - Medium Flood	31	3500	80	>15	7		

UVA-10021

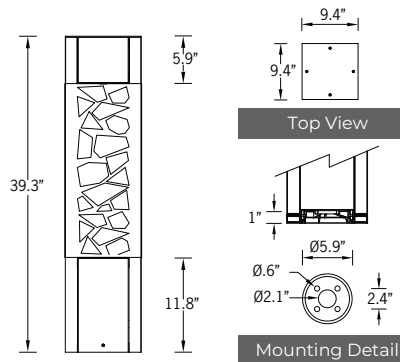
Vancouver 11 Bollard



Shadow Effect



21w COB 570 Lumens
 IP65 - Suitable For Wet Locations
 IK08 - Impact Resistant (Vandal Resistant)
 Weight 18 lbs



Construction

Aluminum

Less than 0.1% copper content - Marine Grade 6060 extruded & LM6 Aluminum High Pressure die casting provides excellent mechanical strength, clean detailed product lines and excellent heat dissipation.

Pre-paint

8 step degrease and phosphate process that includes deoxidizing and etching as well as a zinc and nickel phosphate process before product painting.

Memory Retentive -Silicon Gasket

Provided with special injection molded "fit for purpose" long life high temperature memory retentive silicon gaskets. Maintains the gaskets exact profile and seal over years of use and compression.

Thermal management

LM6 Aluminum is used for its excellent mechanical strength and thermal dissipation properties in low and high ambient temperatures. The superior thermal heat sink design by Ligman used in conjunction with the driver, controls thermal below critical temperature range to ensure maximum luminous flux output, as well as providing long LED service life and ensuring less than 10% lumen depreciation at 50,000 hours.

Surge Suppression

Standard 10kv surge suppressor provided with all fixtures.

BUG Rating

B1 - U1 - G0

Finishing

All Ligman products go through an extensive finishing process that includes fettling to improve paint adherence.

Paint

UV Stabilized 4.9Mil thick powder coat paint and baked at 200° C. This process ensures that Ligman products can withstand harsh environments. Rated for use in natatoriums.

MicroPRIM Finishes

MicroPRIM is Ligman's trade marked decorative powder coating technology that permanently infuses colors, patterns, or imagery directly into the surface of luminaires and poles while providing protections that standard powder coating does not offer.

MicroPRIM finishes include nature-inspired wood grains and stone aesthetics, material-inspired finishes such as brushed metal, concrete, and carbon fiber, Solid colors in Ligman standard colors, as well as any RAL or Pantone color, Decorative patterns, custom imagery and more.

Coating and Infusion Process

Metal components are pre-treated and powder coated with a proprietary polyurethane-based coating engineered for outdoor architectural use. Decorative patterns or imagery are then permanently infused into the cured powder coat through a heat-based process, creating a durable, integrated finish.

Performance and Validation

MicroPRIM finishes are suitable for indoor and outdoor applications and meet AAMA2605 architectural coating requirements. Performance is validated through laboratory and real-world testing to ASTM standards for UV exposure, adhesion, abrasion, impact, salt spray, chemical resistance, and graffiti resistance.

All MicroPRIM finishes are backed by Ligman's 10-year warranty.

Key Performance Attributes

- Anti-graffiti resistance
- UV and weather resistance
- Scratch and abrasion resistance
- Natatorium Rated for installation in corrosive environments

Hardware

Provided Hardware is Marine grade 316 Stainless steel.

Anti Seize Screw Holes

Tapped holes are infused with a special anti seize compound designed to prevent seizure of threaded connections, due to electrolysis from heat, corrosive atmospheres and moisture.

Crystal Clear Low Iron Glass Lens

Provided with tempered, impact resistant crystal clear low iron glass ensuring no green glass tinge.

Optics & LED

Precise optic design provides exceptional light control and precise distribution of light.
 LED CRI > 80

Lumen - Maintenance Life

L80 /B10 at 50,000 hours (This means that at least 90% of the LED still achieve 80% of their original flux)

Contemporary urban lighting furniture. Open-sided, three lattice pattern options or your bespoke design.

A stylish Dark Sky Compliant square high performance bollard with downward light distribution using LED lamps. This light column offers optimal visual comfort through glare control by utilizing a controlled optics designed by Ligman. These bollards have a square design providing a unique wide light distribution, offering an architecturally appealing clover leaf pattern on the paving. The internal sides of the supporting pillars are accented by light from the LED.

Color temperature 2700K, 3000K, 3500K and 4000K. The minimalist shape provides distinctive lighting effects by night and decorative urban effect during the day. Suitable for pedestrian areas, precincts, building surrounds, shopping centers, squares and parks. The Vancouver Bollard comes standard with a unique waterproof internal driver housing compartment that is situated at the top of the pole to stop water and dust from entering the electrical components. This fixture is supplied completely wired with powercord and waterproof gland from the driver enclosure to the base of the column to ensure quick trouble-free installation.

The Vancouver has a specially designed anchor bolt mounting base that is partially buried below ground level to provide a flush fixture finish with the surface, but maintains the rigidity that is required when installing bollards.

Custom bollard heights are available, please specify. Provided with anchor bolts Reduced custom wattages can be provided to suit customer requirements. (Specify total watt requirement per fixture)

• NOTE: For the round version of the Vancouver, please see the Benton Light Column and Bollard

To meet International Dark Sky criteria, 3000k or warmer LEDs must be selected.



PROJECT	<input type="text"/>	DATE	<input type="text"/>
---------	----------------------	------	----------------------

QUANTITY	<input type="text"/>	TYPE	<input type="text"/>	NOTE	<input type="text"/>
----------	----------------------	------	----------------------	------	----------------------

ORDERING EXAMPLE || UVA - 10021 - 21w - T2 - W30 - 02 - 120/277v - Options

UVA-10021	<input type="text"/>	<input type="text"/>	<input type="text"/>	<input type="text"/>	<input type="text"/>
	LAMP	BEAM	LED COLOR	FINISH COLOR	VOLTAGE
	21w COB 570 Lumens	T1 - Type I Distribution T2 - Type II Distribution T3 - Type III Distribution T4 - Type IV Distribution T5 - 65° Beam	W27 - 2700K W30 - 3000K W35 - 3500K W40 - 4000K	01 - BLACK RAL 9011 02 - DARK GREY RAL 7043 03 - WHITE RAL 9003 04 - METALLIC SILVER RAL 9006 05 - MATTE SILVER RAL 9006 06 - LIGMAN BRONZE 07 - CUSTOM RAL	120/277v

<input type="text"/>	<input type="text"/>	<input type="text"/>
----------------------	----------------------	----------------------

ADDITIONAL OPTIONS

- NAT - Natatorium Rated
- DIM - 0-10v Dimming
- HGT - Custom Bollard Height
- GFCI - GFCI Box
- OPAL - Opal Lens

More Custom Finishes Available Upon Request

Consult factory for pricing and lead times

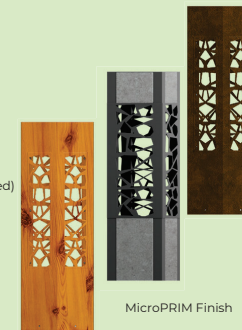
MicroPRIM FINISHES

- SW01 - OAK FINISH
- SW02 - WALNUT FINISH
- SW03- PINE FINISH
- DF - DOUGLAS FIR FINISH
- CW - CHERRY WOOD FINISH
- NW - NATIONAL WALNUT FINISH
- SU01 - CONCRETE FINISH
- SU02 - SOFTSCAPE FINISH
- SU03 - STONE FINISH
- SU04 - CORTEN FINISH
- CSM - Custom Image/Pattern

MicroPRIM FINISHES

- MP - MAPLE FINISH
- MHG - MAHOGANY FINISH
- BH - BEECH FINISH
- CN - CHESTNUT FINISH
- WMBL - WHITE MARBLE FINISH
- MBL - MARBLE FINISH
- GRNT - GRANITE FINISH
- BGD - BRUSHED GOLD FINISH
- BBRZ - BRUSHED BRONZE FINISH
- CAMO - CAMOUFLAGE FINISH

- MP01 - MicroPRIM RAL 9011 Black (Glossy)
- MP02 - MicroPRIM RAL 7043 Dark Grey (Glossy)
- MP03 - MicroPRIM RAL 9003 White (Glossy)
- MP04 - MicroPRIM RAL 9006 Metallic Silver (Glossy)
- MP05 - MicroPRIM RAL 9006 Matte Silver (Matte/Textured)
- MP06 - MicroPRIM Ligman Bronze (Glossy)
- MP07 - MicroPRIM Custom Color (Glossy)



MicroPRIM Finish





LITESPHERE 2.0

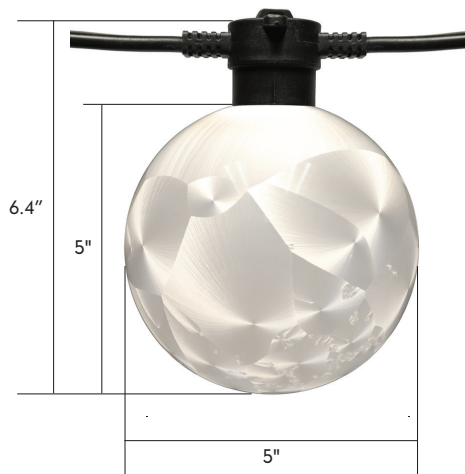
AND



Project: _____ TYPE: _____

- The next evolution of ADAPT delivers a robust specification-grade strand with factory molded standard spacing for consistent quality from start to finish
- Litesphere ADAPT 2.0 design provides optional suspended mounting or a twist-off cap for surface applications
- Available DarkSky option with added light shade
- 12V DC Low voltage system for long runs
- Socket and cord color available in black or white
- PET ADAPT Globe for shatter-proof performance
- IP67
- cULus
- 5 Year warranty

Dimensions





Strand Order Guide - Standard Globe

Note: For suspension application, a catenary cable is required for proper installation. Please contact Tivoli for recommendations on unique mounting applications.

Product	Wire	Spacing	LED Type	LED Color	Globe	Voltage
LSA2 Litesphere ADAPT 2.0	B = Black W = White*	12 = 12" OC 18 = 18" OC 24 = 24" OC 36 = 36" OC 48 = 48" OC	V = Very High Output	19 = 1900K 27 = 2700K 30 = 3000K 35 = 3500K 40 = 4000K 50 = 5000K AM = Amber RB = Royal Blue RD = Red GN = Green YL = Yellow TS = Turtle Safe	GINPET = Gina ANGPET = Angela KATPET = Katie LUCPET = Lucia JENPET = Jennifer JOAPET = Joanne MNPET = Manqi BREPET = Brenda ELZPET = Elizabeth	12 = 12V DC

*For wire color white contact Factory for MOQ and lead time

Note: Optional Light Shade are needed to comply with DarkSky requirements. Consult factory for lead time and available style and sizes - see page 7

Strand Order Guide - Color Globe

Note: For suspension application, a catenary cable is required for proper installation. Please contact Tivoli for recommendations on unique mounting applications.

Product	Wire	Spacing	LED Type	LED Color	Globe	Voltage
LSA2 Litesphere ADAPT 2.0	B = Black W = White*	12 = 12" OC 18 = 18" OC 24 = 24" OC 36 = 36" OC 48 = 48" OC	V = Very High Output	35 = 3500K**	GRNPET = Cosmic Green PNKPET = Nebula Pink PURPET = Celestial Purple YELPET = Solar Yellow	12 = 12V DC

**For wire color white contact Factory for MOQ and lead time

**3500K CCT is recommended for best color result

Note: Optional Light Shade are needed to comply with DarkSky requirements. Consult factory for lead time and available style and sizes - see page 7

Power Lead Order Guide

Figure A - All Litesphere ADAPT 2.0 are evenly cut between globes according to specified spacing.
 Figure B - Power leads are added to the end cut, extending the total length of the power lead.

LSL2-XEP-X-XX

X = B (Black), W (White)
 XX = 05 (5'), 10 (10'), 15 (15'), 20 (20'), 25 (25')
 For custom length consult factory

Figure A

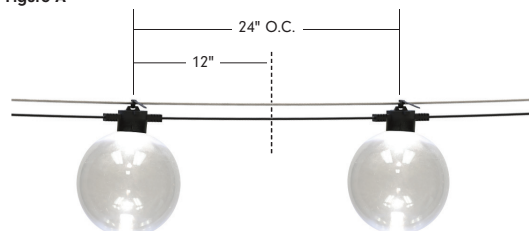
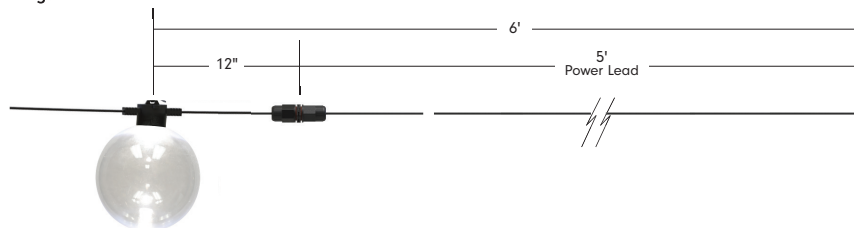


Figure B



Jumper Order Guide

Figure A - All Litesphere ADAPT 2.0 are evenly cut between globes according to specified spacing.
 Figure B - Jumpers are added between the cuts, extending the total length of wire between globes.

LSL2-JUMPER-X-XX

X = B (Black), W (White)
 XX = 05 (5'), 10 (10')
 For custom length consult factory

Figure A

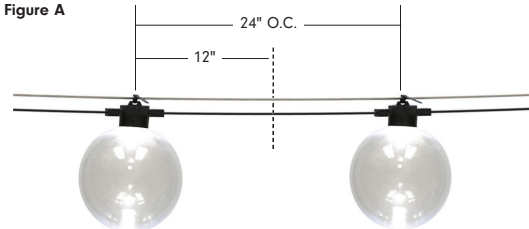
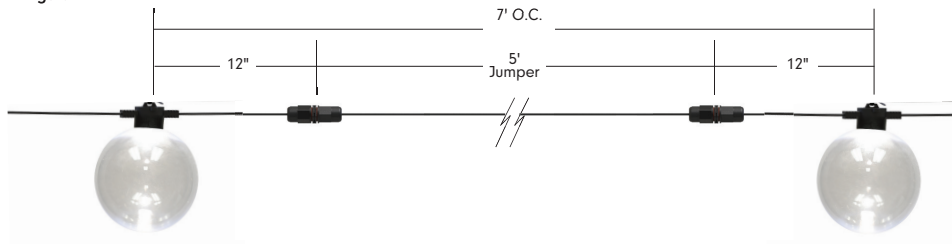


Figure B





Specifications

Electrical					
Spacing	12"	18"	24"	36"	48"
Maximum Electrical Run	55'	70'	80'	90'	100'
Watts/ft	0.84	0.56	0.42	0.28	0.21
Input Voltage	12V DC				

Physical	
Dimensions (G120)	7.1" H x 5" W
Dimensions (ST19)	6.7" H x 2.375" W
Socket Housing	PVC
American Wire Gauge	14 AWG
Globe	PET (Shatter proof)
Mounting	Surface Mount, Suspended
Operating Temperature	-40°C to 65°C (-40°F to 149°F)

Certification and Testing	
Certification	cULus
Environment	Wet Location
Lumen Maintenance (L70)	70,000
IP Rating	IP67
Warranty	5 Years

Control	
Control System	0-10V, ELV, MLV, DMX 512 (Dim to 1% with an Infinity power supply and a 0-10V Lutron Diva dimmer)

Weights (G125)					
lb/ft w/strand	0.44	0.35	0.29	0.17	0.15
lb/ft w/cable	0.46	0.37	0.31	0.19	0.17

Weights (ST19)					
lb/ft w/strand	0.34	0.28	0.24	0.14	0.13
lb/ft w/cable	0.36	0.30	0.26	0.16	0.15

EPA (Side)					
G125	0.11	0.07	0.06	0.04	0.03
ST19	0.05	0.03	0.03	0.02	0.01
Hat 8"	0.07	0.05	0.04	0.02	0.02
Hat 13"	0.12	0.08	0.06	0.04	0.03
Dish 10"	0.05	0.03	0.03	0.02	0.01
Flower 10"	0.06	0.04	0.03	0.02	0.02
Flower 13"	0.08	0.05	0.04	0.03	0.02

Delivered Lumen

Output - GINPET (3500K)					
Spacing	12"	18"	24"	36"	48"
Lumens/ft	76.5	51	38.25	25.5	19.13

Output - ANGPET (3500K)					
Spacing	12"	18"	24"	36"	48"
Lumens/ft	76.5	51	38.25	25.5	19.13

Output - JOAPET (3500K)					
Spacing	12"	18"	24"	36"	48"
Lumens/ft	72.6	48.4	36.3	24.2	18.15

Output - KATPET (3500K)					
Spacing	12"	18"	24"	36"	48"
Lumens/ft	CF	CF	CF	CF	CF

Output - MNQPET (3500K)					
Spacing	12"	18"	24"	36"	48"
Lumens/ft	CF	CF	CF	CF	CF

Output - LUCPET (3500K)					
Spacing	12"	18"	24"	36"	48"
Lumens/ft	82.8	55.2	41.4	27.6	20.7

Output - BREPET (3500K)					
Spacing	12"	18"	24"	36"	48"
Lumens/ft	62.5	41.67	31.25	20.83	15.63

Output - JENPET (3500K)					
Spacing	12"	18"	24"	36"	48"
Lumens/ft	71.8	47.87	35.9	23.93	17.95

Output - ELZPET (3500K)					
Spacing	12"	18"	24"	36"	48"
Lumens/ft	79.5	53	39.75	26.5	19.88

Output - GRNPET (3500K)					
Spacing	12"	18"	24"	36"	48"
Lumens/ft	39.8	26.53	19.9	13.27	9.95

Output - PNKPET (3500K)					
Spacing	12"	18"	24"	36"	48"
Lumens/ft	38.9	25.93	19.45	12.97	9.73

Output - YELPET (3500K)					
Spacing	12"	18"	24"	36"	48"
Lumens/ft	65.5	43.67	32.75	21.83	16.38

Output - PURPET (3500K)					
Spacing	12"	18"	24"	36"	48"
Lumens/ft	18.6	12.4	9.3	6.2	4.65

Mounting Options

SURFACE/FLUSH

For surface mount applications, remove the top suspension-plate by turning counter-clockwise until off. Place socket flush against the desired surface and mount using proper screws according to substrate.



SUSPENDED

Suspended mounting will use a combination of LS-Cable, LS-Locks with LS-UVZP. Tension the cable wire with our LS-TT (Tension Tool) for desired sag (Please adhere to local city code for suspended application).

Note: For suspension application, a catenary cable is required for proper installation. Please contact Tivoli for recommendations on unique mounting applications.



Mounting Accessories

Warning: For suspension application, catenary cable is required to support the product, otherwise the warranty will be void.



LS-CABLE-X
X = 60 (60'), **110** (110'),
500 (500')
 1/8" Galvanized cable includes (2) cable locks for use with loads up to 200lbs
 Note: 500' no locks included



LS-LOCK-X
X = 2 (2 pcs), **4** (4 pcs)
 Includes (1) release key
 Cable Lock for 1/8" cable, support loads up to 200 lbs.



LS-TT
 Cable tensioning tool up to 880lbs with 6:1 gear drive with integral torque gauge controls



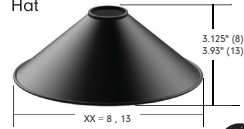
LS-UVZP-BK-XX
XX = 30 (30 pcs), **50** (50 pcs)
 Black UV resistant, heavy duty ties maximum weight up to 100 lbs./per tie

Light Shade Accessories

Note: Light Shade needed for DarkSky compliance

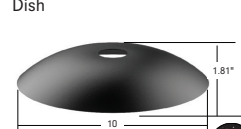


Hat



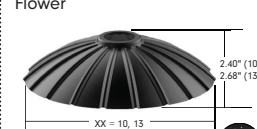
SHADE-HT-BK-XX-XX
XX = BK (black), **CO*** (copper)
XX = 8 (8.3"), **13**** (12.6")
 Black top, black/copper bottom
 Weight: 0.46 lb (8), 1.2 lb (13)

Dish



SHADE-DS-BK-BK-10
 10.2" Black top, black bottom
 Weight: 0.76 lb

Flower



SHADE-FL-BK-BK-XX
XX = 10 (9.8"), **13** (13.8")
 Black top, black bottom
 Weight: 0.63 lb (10), 1.48 lb (13)



SHADE-ADP-LSL2-XX-XX
XX = BK (Black), **WH*** (White)
XX = 01 (1pc), **25** (25pcs), **50** (50pcs)
 Litesphere 2.0 Shade Adapter kit
Note: One adaptor required for each shade

*Only available for 13 (Hat)

**Consult factory for lead time and MOQ

ADAPT Globe /Replacement

Note: Polyethylene Terephthalate (PET) globe for 100% shatter proof design
 PET globes should not be exposed to industrial alcohol



LSA2-MNQ-PET
 Manqi PET Globe
 Diffused Pearl Design



LSA2-LUC-PET
 Lucia PET Globe
 Clear Design



LSA2-JEN-PET
 Jennifer PET Globe
 Simulated Cracked Design



LSA2-JOA-PET
 Joanne PET Globe
 Simulated Fragmented Design



LSA2-GIN-PET
 Gina PET Globe
 Clear with Frosted Design



LSA2-KAT-PET
 Katie PET Globe
 Clear with Frosted Design
LSA2-KAT-F-PET
 Slightly Frosted with
 Frosted Design



LSA2-ANG-PET
 Angela PET Globe
 Clear with Frosted Design



LSA2-BRE-PET
 Brenda PET Globe
 Classic S19 Vintage Profile



LSA2-GRN-PET
 Cosmic Green Colored PET
 Globe



LSA2-PNK-PET
 Nebula Pink Colored PET
 Globe



LSA2-PUR-PET
 Celestial Purple Colored PET
 Globe



LSA2-YEL-PET
 Solar Yellow Colored PET
 Globe



LSA2-ELZ-PET
 Elizabeth PET Globe
 Opalescent Bubble Design

Replacement Parts



LSL2-INT-X
X = B (black), **W*** (white)
 Connector to join the strand
 Sold each



LSL2-EC-X-(PK20)
X = B (black), **W*** (white)
 Litesphere 2.0 End-Cap
 Sold each
 (add **PK20** for pack of 20)
 Weight: 0.0375 lb/each



LSL-XX-V-12
XX = 19, 27, 30, 35, 40, 50*,
AM*, RD*, RB*, GN*, YL*, TS*
 12V VHO Wedge Base LED
 Sold each

*Contact Factory for MOQ and lead time

In-Wall Controls



Touchscreen

TVOQ-1-WH
 White
 16 DMX channel, 16 scene,
 4 zone, glass touch screen



Touchscreen

TVOQ-10-XX-7
XX = BK (Black), **WH** (White)
 1024 DMX channel, 500 scene,
 10 zone, glass touch screen



Touchscreen

TVOQ-2-BK
 Black
 512 DMX channel, 99 scene



Power Supplies

INFINITY - MLV / ELV / 0-10V / PWM / TRIAC

Dim to 1% with a 0-10V Lutron Diva dimmer (by others)

DESCRIPTION	CAT NO	APPLICATION	PRIMARY VOLTAGE	SECONDARY VOLTAGE	CIRCUIT BREAKERS	MAX LOAD	MIN LOAD	CIRCUIT CAPACITY
Infinity Series Class 2 Transformer	INF-J-30-1-2.5-12	Indoor / Outdoor	100 - 277V AC	12V DC	1	30W	3W	2.5A
	INF-J-60-1-5-12				1	60W	6W	5A
	INF-J-180-3-5-12				3	3x60W	3x6W	3x5A
	INF-J-300-5-5-12				5	5x60W	5x6W	5x5A

ADNM - NON DIMMING

DESCRIPTION	CAT NO	APPLICATION	PRIMARY VOLTAGE	SECONDARY VOLTAGE	CIRCUIT BREAKERS	MAX LOAD	CIRCUIT CAPACITY
ADNM Series Class 2 Transformer	ADNM-60-1-5-12-D	Indoor / Outdoor	100-277V AC 50/60 HZ	12V DC	1	60W	5A
	ADNM-80-1-5-12-D				1	60W	5A
	ADNM-150-2-5-12-D				2	2x60W	2x5A
	ADNM-240-3-5-12-D				3	3x60W	3x5A
	ADNM-320-4-5-12-D				4	4x60W	4x5A

ADNM - 0-10V DIMMING

DESCRIPTION	CAT NO	APPLICATION	PRIMARY VOLTAGE	SECONDARY VOLTAGE	CIRCUIT BREAKERS	MAX LOAD	CIRCUIT CAPACITY
ADNM Series Class 2 Transformer	ADNM-60-1-5-12-DOT	Indoor / Outdoor	100-277V AC 50/60 HZ	12V DC	1	60W	5A
	ADNM-80-1-5-12-DOT				1	60W	5A
	ADNM-150-2-5-12-DOT				2	2x60W	2x5A
	ADNM-240-3-5-12-DOT				3	3x60W	3x5A
	ADNM-320-4-5-12-DOT				4	4x60W	4x5A

ADNM - DMX SINGLE ADDRESS

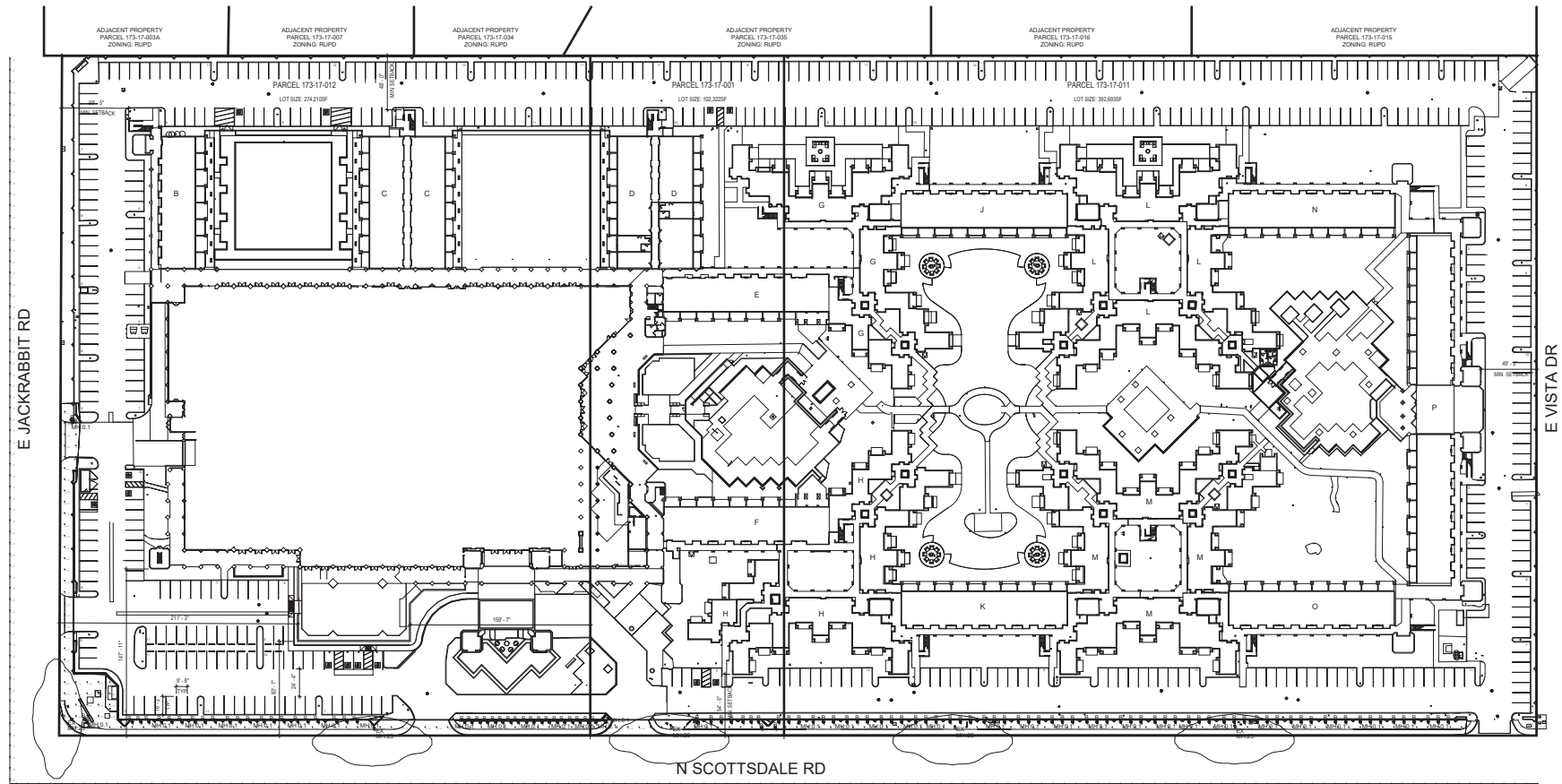
DESCRIPTION	CAT NO	APPLICATION	PRIMARY VOLTAGE	SECONDARY VOLTAGE	CIRCUIT BREAKERS	MAX LOAD	CIRCUIT CAPACITY
ADNM Series Class 2 Transformer	ADNM-60-1-5-12-DIN	Indoor / Outdoor	100-277V AC 50/60 HZ	12V DC	1	60W	5A
	ADNM-80-1-5-12-DIN				1	60W	5A
	ADNM-150-2-5-12-DIN				2	2x60W	2x5A
	ADNM-240-3-5-12-DIN				3	3x60W	3x5A
	ADNM-320-4-5-12-DIN				4	4x60W	4x5A

ADNM - DMX MULTI ADDRESS

DESCRIPTION	CAT NO	APPLICATION	PRIMARY VOLTAGE	SECONDARY VOLTAGE	CIRCUIT BREAKERS	MAX LOAD	CIRCUIT CAPACITY
ADNM Series Class 2 Transformer	ADNM-150-2-5-12-DIN-2	Indoor / Damp	100-277V AC 50/60 Hz	12V DC	2	2x60W	5A
	ADNM-240-3-5-12-din-3				3	3x60W	3x5A

LUMINAIRE SCHEDULE									
SYMBOL	QTY	LABEL	ARRANGEMENT	MANUFACTURER	MODEL	LLF	LUMINAIRE LUMENS	LUMINAIRE WATTS	TOTAL WATTS
☐	5	EX	SINGLE	EXISTING	EXISTING STREET LIGHT	0.900	N.A.	N.A.	204
⊕	114	B	SINGLE	SPJ LIGHTING, INC	THE BEAST-FINISHES-6W-3000K-15-15V-WIDE FLOOD	0.900	521	20.5	526.2

CALCULATION SUMMARY								
LABEL	CACTYPE	UNITS	AVG	MAX	MIN	AVG / MIN	MAX / MIN	
PROPERTY LINE	ILLUMINANCE	Fc	0.06	0.8	0.0	N.A.	N.A.	
SITE_TOP	ILLUMINANCE	Fc	0.81	5.1	0.0	N.A.	N.A.	



A1 PHOTOMETRICS SCOTTSDALE RD
SCALE: 1" = 40'-0"

5/16/2023 8:55:52 PM





MODEL: **THE BEAST**
 MATERIAL: **Solid Brass**
 FINISH SHOWN: **Matte Bronze**
 ELECTRICAL: **12-15v**
 WATTAGE: **6W**
 LED: **COB Bridgelux 93 CRI**
 ENGINE: **FB-6W-NCYL**
 LUMENS: **400**
 MOUNTING: **1/2" NPT, Dual Fin Spike Included**
 OPTION: **Tamper proof screw option for swivel & adjustable shroud (TS)**

FINISHES

- Matte Bronze (MBR)
- Verde (V)
- Moss (M)
- Black (B)
- Rusty (R)
- Satin Brass (SB)
- Aged Brass (AG)
- Raw Copper (RC)
- Natural Copper (NC)

PVD PREMIUM

- PVD Polished (PVDP)
- PVD Satin (PVDS)
- PVD Graphite (PVDG)
- PVD Bronze (PVD BZ)
- PVD Black (PVD BL)

WATTAGE	LUMENS
<input type="checkbox"/> 6W	400

LED: COB Bridgelux 93 CRI

COLOR TEMPERATURE

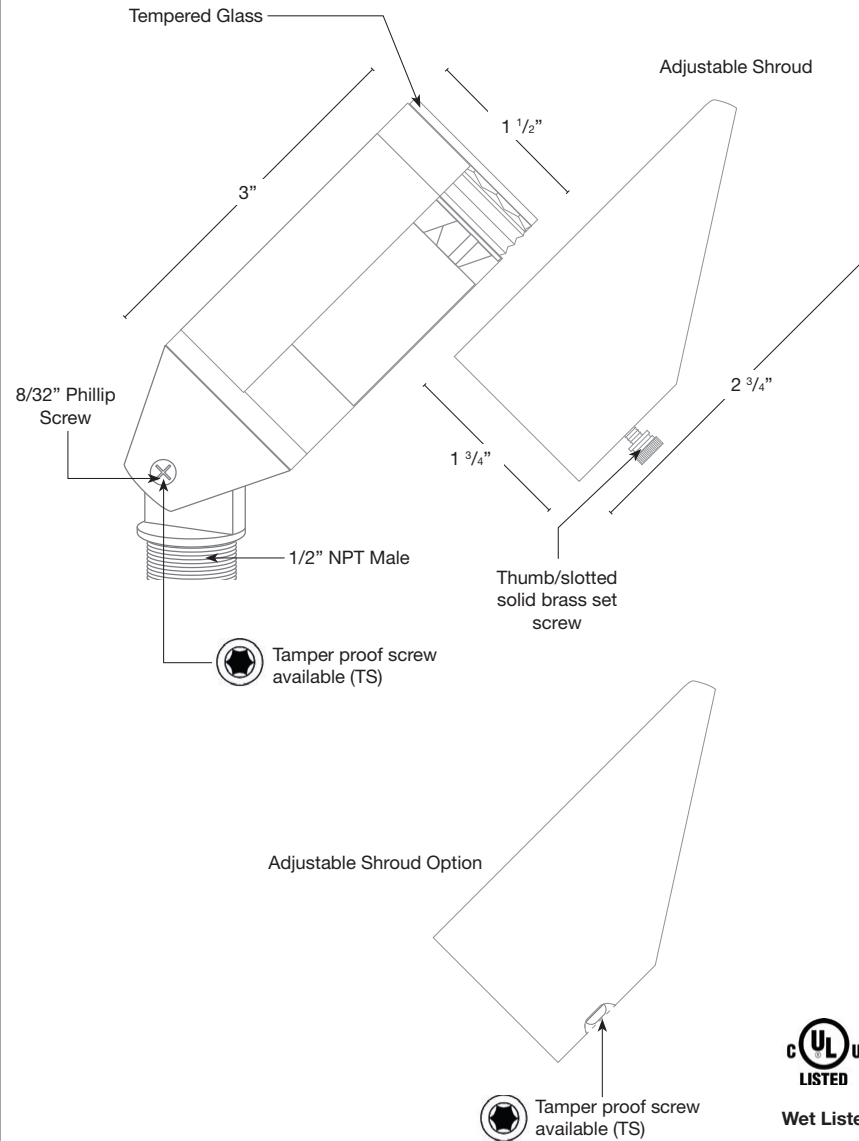
- 2700K
- 3000K

ELECTRICAL

- 12-15V

OPTICS

- SPOT 19d
- FLOOD 38d
- WIDE FLOOD 54d
- WIDE ANGLE FLOOD 120d



Wet Listed



Ordering Example

Customer Approval

Date

THE BEAST-MBR-6W-27K-12-15V-TS