

TOWN OF PARADISE VALLEY

Public Works & Engineering Remodel

June 13, 2019

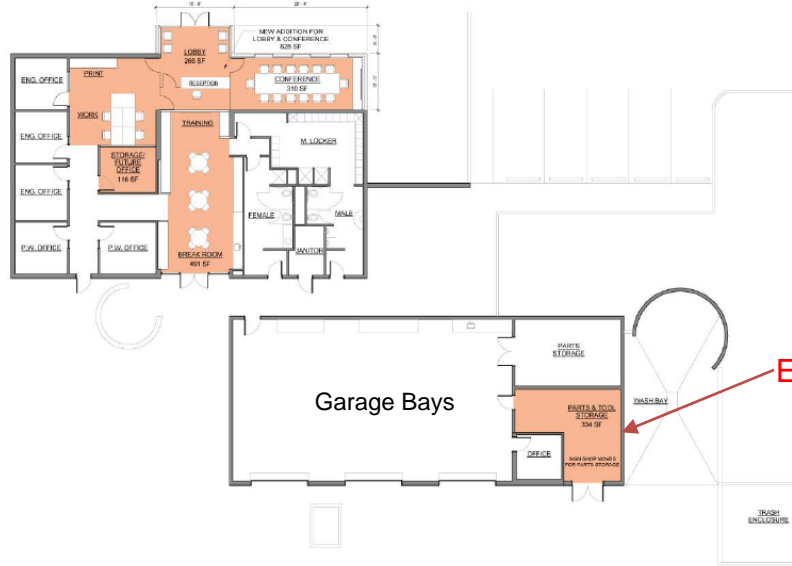


PROJECT SCOPE

- Design Contract with DWL Architects in the amount of \$88,933
 - a. Verify Space Needs Assessment with Staff
 - b. Provide Design Concepts for Staff & Council Review & Approval
 - c. Provide Construction Documents
- Proposed Improvements include:
 - Revised Lobby/Reception Area
 - Revised Conference Room
 - New Office Space
 - New Storage Space
 - New Work Space
 - Expand Fleet Parts Storage Into Existing Sign Shop
 - New Sign Shop



FY2016-17 CORGAN SPACE NEEDS ASSESSMENT



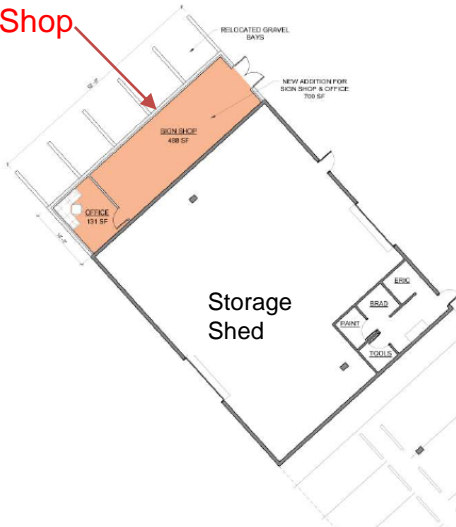
PUBLIC WORKS PROPOSED PLAN

The following plan illustrates a conceptual plan that department leaders have agreed addresses the goals identified for this study.

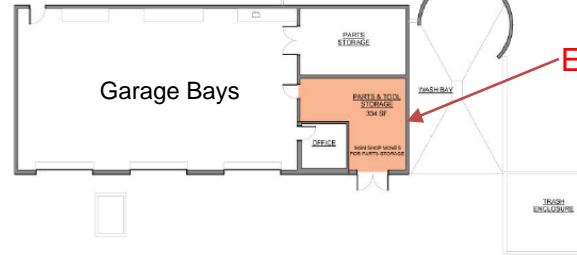
MAJOR CHANGES

- Main entry addition
- Conference room addition
- Consolidation of open work area
- Expand parts storage
- Expand sign shop

New Sign Shop



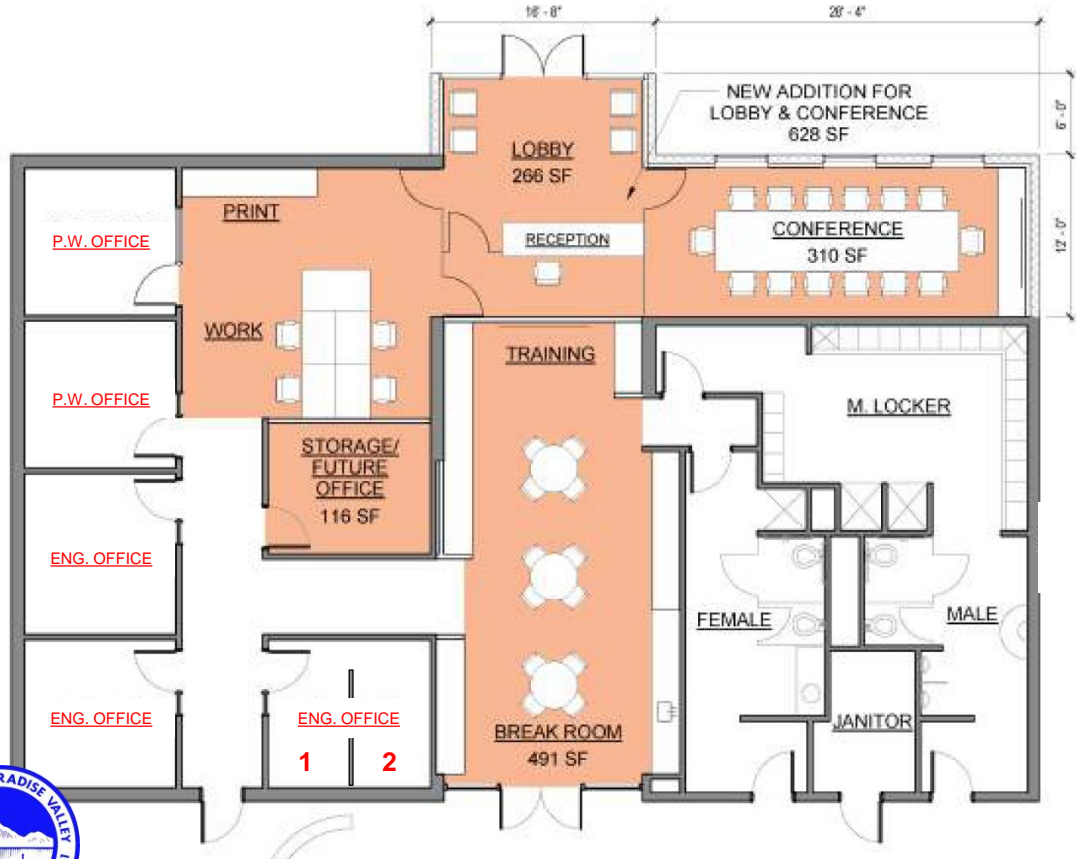
Expanded Parts Storage



- Modified Lobby & Conference Room
- Modified Work Space
- 1 New Office
- 1 New Storage/Future Office



FY2016-17 CORGAN SPACE NEEDS ASSESSMENT



- Modified Lobby & Conference Room
- Modified Work Space
- 1 New Office*
- 1 New Storage/Future Office*

* Current & Proposed FY19-20 Staffing Utilizes All New Space In Corgan Study



EXISTING CONDITIONS



Front Entry To Public Works/Engineering



Front Lobby With Rear Facing Sr. Admin. Assistant



EXISTING CONDITIONS



Conference Room



Hallway With Copier & Plotter



EXISTING CONDITIONS



Combined Office



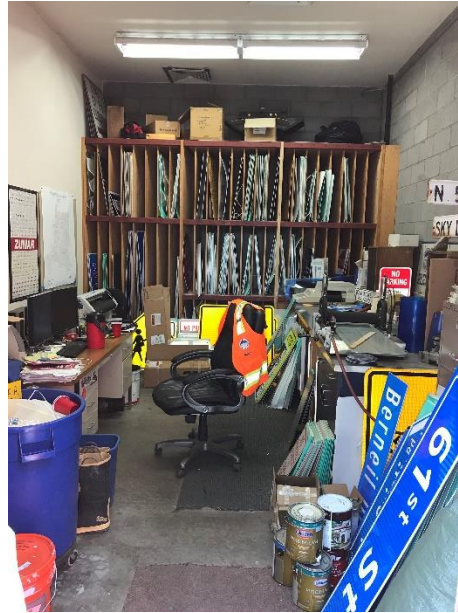
Break Room



EXISTING CONDITIONS



Parts Storage (Fleet)



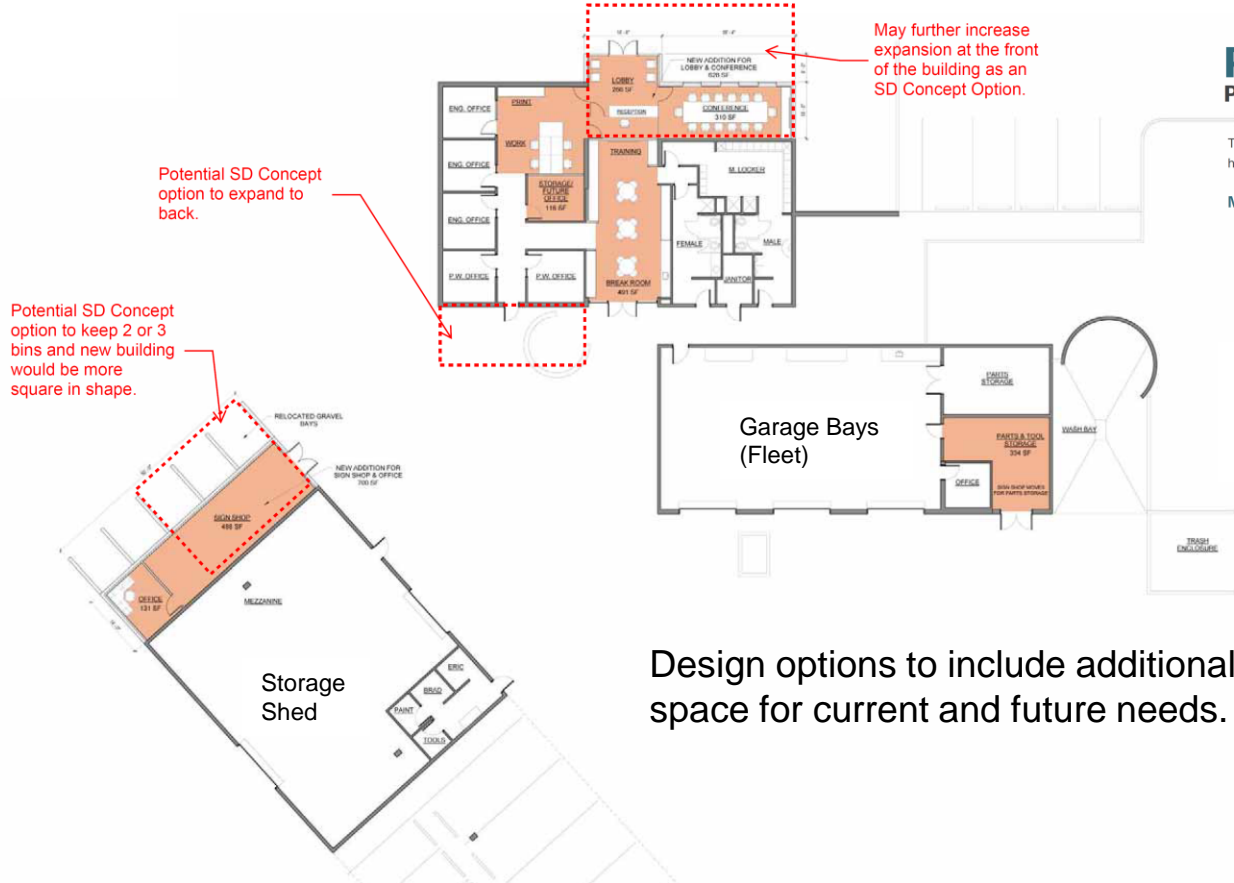
Sign Shop



Proposed Sign Shop Location



POTENTIAL DWL SCHEMATIC DESIGN CONCEPTS



PUBLIC WORKS PROPOSED PLAN

The following plan illustrates a conceptual plan that department leaders have agreed addresses the goals identified for this study.

MAJOR CHANGES

- Main entry addition
- Conference room addition
- Consolidation of open work area
- Expand parts storage
- Expand sign shop

Design options to include additional office space & storage space for current and future needs.



QUESTIONS?

