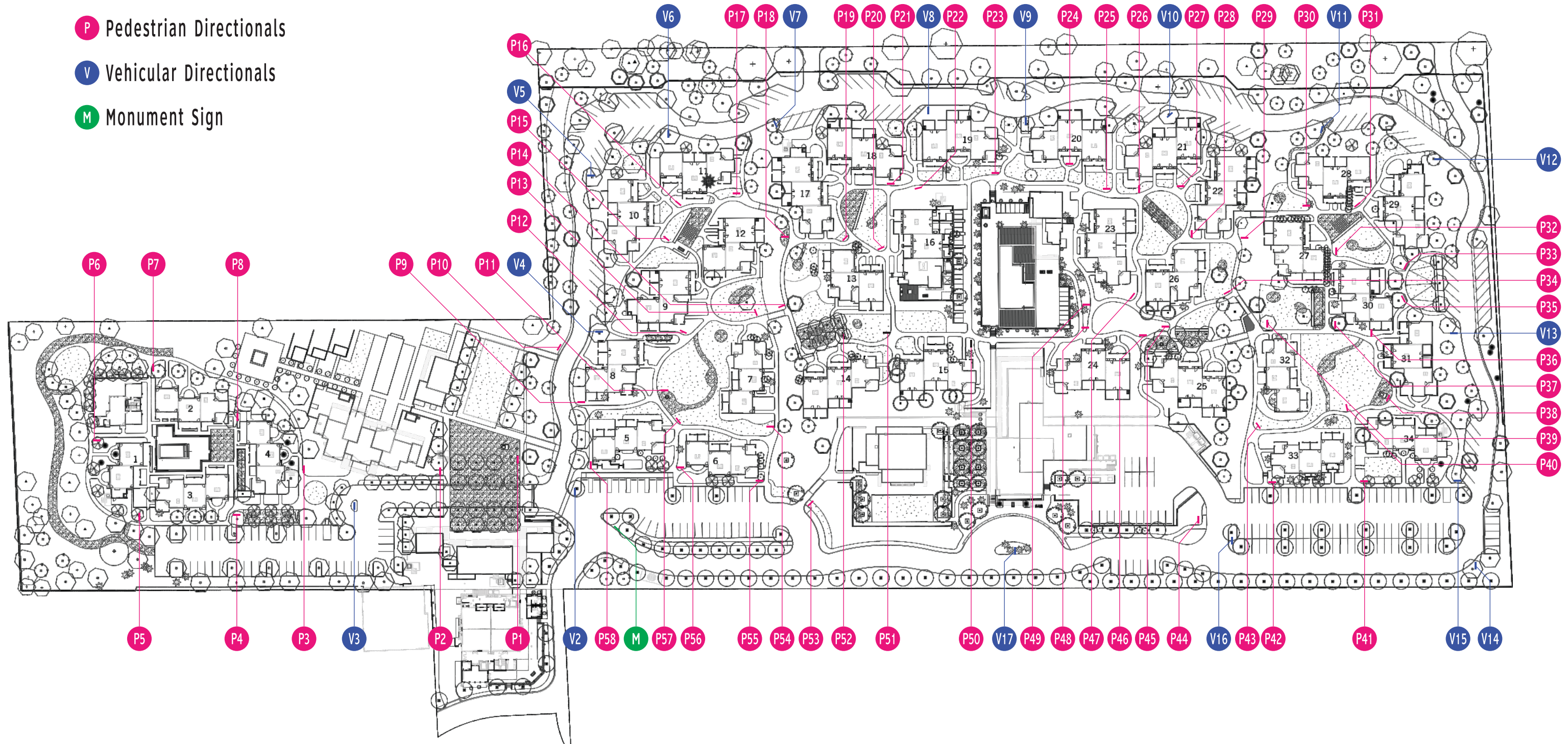


Key:

- P Pedestrian Directionals
- V Vehicular Directionals
- M Monument Sign



NOTES:

Approved By: _____ Date: _____

ra
gw

Andaz 11-20-15

Sign Location Plan111815

1 / 1
PAGE

All specified details on these drawings are subject to change due to the availability of materials and/or changes in the method of fabrication. Airpark signs & graphics will do their best to maintain the designs intent of these drawings at all times. If the owner or owners' representative wishes to receive detail drawings on all changes during the fabrication process, airpark signs & graphics must be advised in writing prior to the start of fabrication. This is an original unpublished drawing created by airpark signs and graphics. It is submitted for your personal use in connection with a proposed project being planned for you by airpark signs and graphics. It is not to be reproduced, copied, photographed, exhibited or used in any fashion without expressed written approval of airpark signs and graphics.