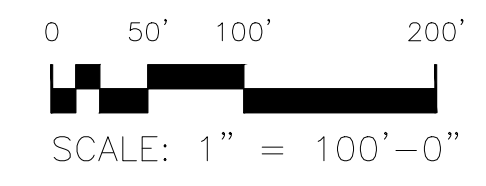


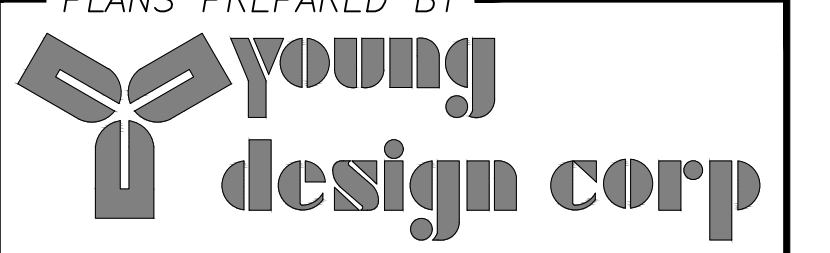
SEE SITE PLAN ON SHEET A-1


1 **PARCEL PLAN**
A-0
 SCALE: 1" = 100'-0"

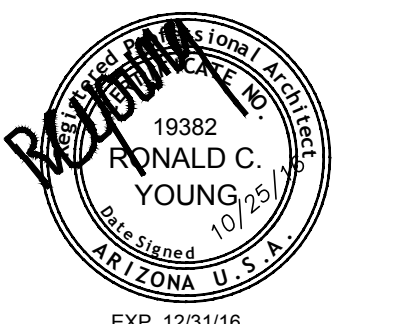


CLIENT

 2625 S. PLAZA DR. #400, TEMPE, ARIZONA, 85282
 PHONE: (480) 638-2600 FAX: (480) 638-2852

PLANS PREPARED BY

 architecture / project management
 10245 E. Via Linda, Scottsdale, AZ 85258
 ph: 480 451 9609 fax: 480 451 9608

SEAL
 This drawing is copyrighted and the property of Young Design Corporation (YDC) & produced solely by YDC and affiliates. reproduction or use of this drawing and/or the information contained herein is forbidden without written permission by Young Design Corporation.



THIS DOCUMENT CONTAINS AN ELECTRONIC SIGNATURE PURSUANT TO A.R.S. TITLE 41 AND TITLE 44. IT IS A VIOLATION FOR ANY PERSON, UNLESS UNDER THE DIRECT SUPERVISION OF THE REGISTRANT, TO MODIFY THIS DOCUMENT IN ANY WAY.

NO.	DATE	DESCRIPTION
5	6/8/15	RELOCATED EQUIPMENT
6	3/30/16	AZIMUTH UPDATE
7	5/31/16	CITY COMMENTS

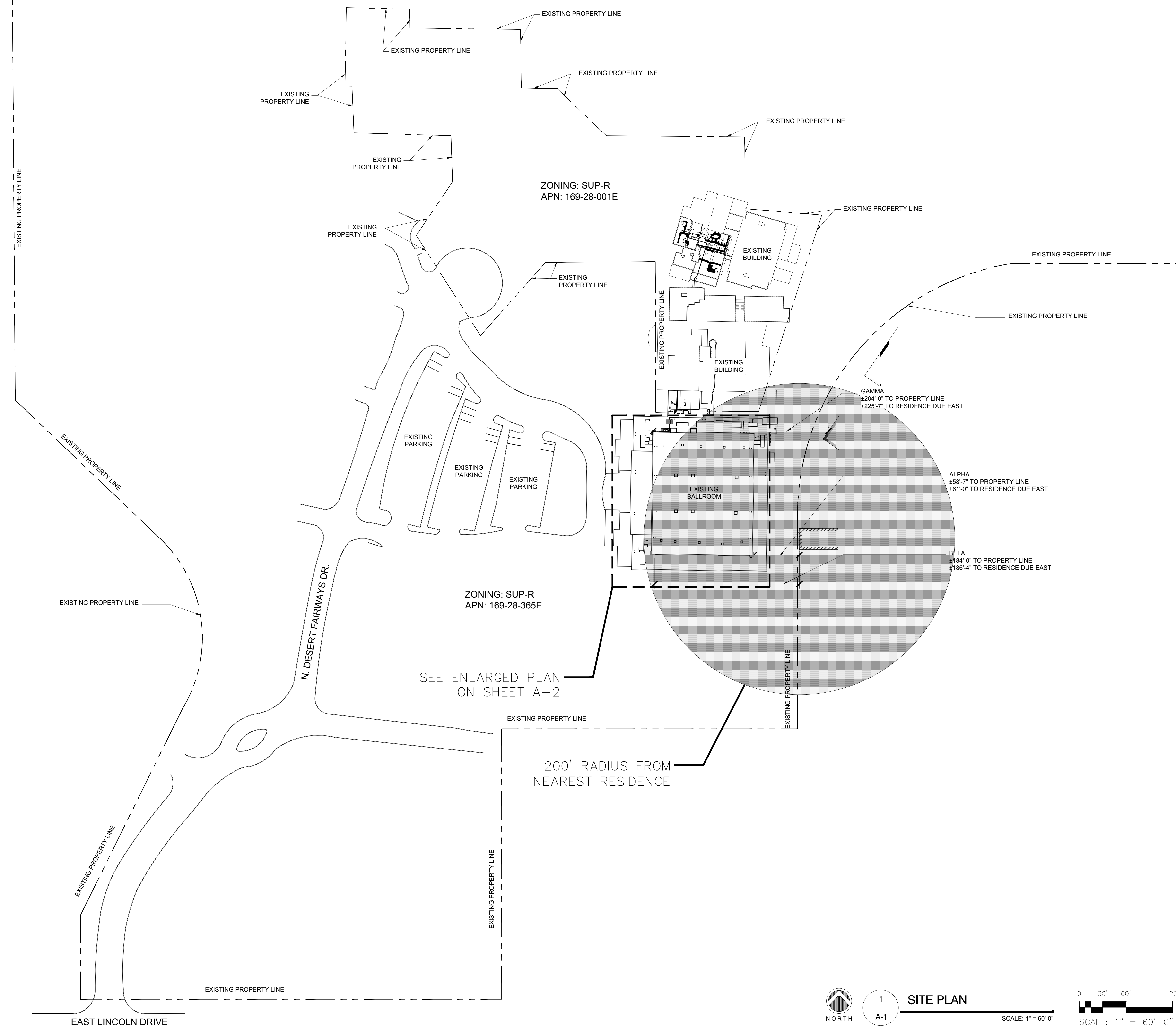
ARCHITECTS JOB NO.
YDC-6179

PROJECT INFORMATION
PH10721A
CAMELBACK INN
 5402 E. LINCOLN DRIVE
 PARADISE VALLEY, AZ 85253

SHEET TITLE
PARCEL PLAN

JURISDICTION APPROVAL

SHEET NUMBER
A-0



CLIENT

T-Mobile

2625 S. PLAZA DR. #400, TEMPE, ARIZONA, 85282
 PHONE: (480) 638-2600 FAX: (480) 638-2852

PLANS PREPARED BY

Young design corp

architecture / project management
 10245 E. Via Linda, Scottsdale, AZ 85258
 ph: 480 451 9609 fax: 480 451 9608

SEAL

This drawing is copyrighted and the property of Young Design Corporation (YDC) & produced solely by YDC and affiliates. reproduction or use of this drawing and/or the information contained hereon is forbidden without written permission by Young Design Corporation.

THIS DOCUMENT CONTAINS AN ELECTRONIC SIGNATURE PURSUANT TO A.R.S. TITLE 41 AND TITLE 44. IT IS A VIOLATION FOR ANY PERSON, UNLESS UNDER THE DIRECT SUPERVISION OF THE REGISTRANT, TO MODIFY THIS DOCUMENT IN ANY WAY.

NO.	DATE	DESCRIPTION
5	6/8/15	RELOCATED EQUIPMENT
6	3/30/16	AZIMUTH UPDATE
7	5/31/16	CITY COMMENTS

ARCHITECTS JOB NO.
YDC-6179

PROJECT INFORMATION

PH10721A

CAMELBACK INN

5402 E. LINCOLN DRIVE
 PARADISE VALLEY, AZ 85253

SHEET TITLE

SITE PLAN

JURISDICTION APPROVAL

SHEET NUMBER

A-1

