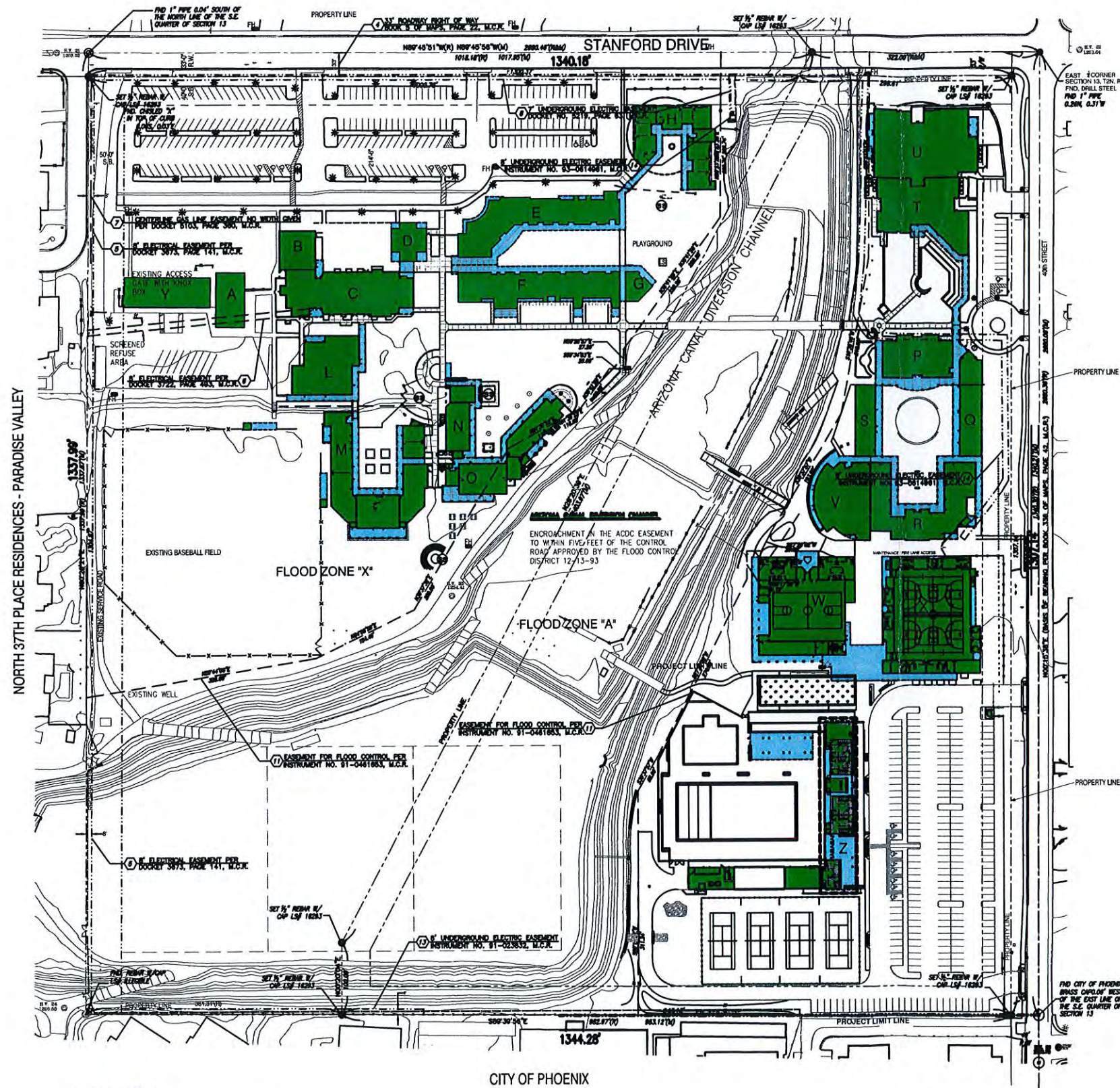


CAMELBACK BIBLE CHURCH - PARADISE VALLEY



CAMPUS PLAN LEGEND

■	EXISTING GROSS BUILDING AREA
■	EXISTING COVERED EXTERIOR AREA

OVERALL CAMPUS PLAN
1" = 80'-0"

EXISTING CONDITIONS

BUILDING DESIGNATION	INTENDED USE	CURRENT APPROVED AREA (S.F.)	CURRENT APPROVED BUILDING HEIGHT	MEASURED GROSS BUILDING AREA (S.F.)	MEASURED COVERED EXTERIOR AREA (S.F.)	TOTAL LOT COVERAGE (S.F.)
A	BUSINESS	3,000	15'-9" TO PARAPET	3,040	0	3,040
B	DINING HALL	8,524	23 TO RIDGE	2,772	0	2,772
C	MULTI-USE (BURCH HALL)	20,000	23 TO RIDGE, W/TOWER OF 38'	10,609	1,062	11,701
D	ADMINISTRATION	2,137	23 TO RIDGE	2,145	555	2,700
E	CLASSROOMS/ADMIN/SUPPORT	10,100	14' TO RIDGE, W/TOWER OF 20'	9,456	4,187	13,683
F	CLASSROOMS	9,000	13'	9,212	3,609	12,820
G	HEALTH	2,000	14' TO RIDGE, W/TOWER OF 20'	1,148	823	1,971
H	CLASSROOMS	9,000	15' TO RIDGE	7,380	2,488	9,868
I	CLASSROOMS	DEMOLISHED				N/A (DEMOLISHED)
J	CLASSROOMS	DEMOLISHED				N/A (DEMOLISHED)
K	LIBRARY/CLASSROOMS/ADMIN.	ORIGINALLY APP'D FOR 6,782 S.F.; 3,244 S.F. TRANSFERRED TO NEW BUILDING 'X' IN SUP-13; 3,538 REMAINING				
L	MUSIC	6,500	26'	6,518	2,064	8,603
M	CLASSROOMS	11,800	N/A	11,887	4,054	15,941
N	CLASSROOMS	3,280	VARIES 11' - 24'	3,277	1,547	4,825
O	CLASSROOMS	7,420	VARIES 11' - 24'	7,379	3,036	10,415
P	LIBRARY	5,700	VARIES TO 25' TO RIDGE	6,835	3,065	9,901
Q	CLASSROOMS/OFFICE	4,300	17'-8" TO RIDGE	2,980	969	3,949
R	CLASSROOMS/ST. CTR.	9,900	VARIES TO 22' TO RIDGE	9,486	3,832	13,318
S	CLASSROOMS	3,000	17'-8" TO RIDGE	3,000	986	3,986
T	SCIENCE	9,500	VARIES 16' - 20'	9,508	1,887	11,395
U	ART	13,000	VARIES 16' - 18'	13,281	973	14,254
V	AUDITORIUM	7,600	27'	7,503	1,643	9,147
W	GYM/ATHLETICS	16,482	VARIES TO 38'-6" TO PARAPET	16,363	5,342	21,705
X	AQUATICS CENTER	17,343	VARIES 18' MAX.	9,006	8,337	17,343
Y	MAINTENANCE	5,040		5,075	0	5,075
Z	PROPOSED GYMNASIUM EXPANSION	PROPOSED	PROPOSED 38'-0" MAXIMUM	PROPOSED 20,779	PROPOSED 5820	PROPOSED 26,599
-	GUARDHOUSE	50	10'	58	0	58
-	DUGOUTS	884		199	710	909
TOTAL		189,078		178,934	57,039	239,511

THIS PROJECT: PROPOSED SIGNAGE

DESCRIPTION OF WORK

PROVISION OF MISCELLANEOUS SIGNAGE LOCATED NEAR THE AQUATICS CENTER AND THE NEW GYMNASIUM BUILDING. SIGNAGE TO BE INCLUDED: BUILDING MOUNTED SIGNAGE, GROUND-MOUNTED MONUMENT TYPE SIGNAGE AND SURFACE PAINTED MURAL.

PROPERTY DESCRIPTION

THE NORTHEAST ONE QUARTER OF THE SOUTHEAST ONE QUARTER OF SECTION 13, TOWNSHIP 2 NORTH, RANGE 3 EAST OF THE GILA AND SALT RIVER BASE AND MERIDIAN, MARICOPA COUNTY, AS REFERENCED IN BOOK 336 OF MAPS, PAGE 1, MARICOPA COUNTY RECORDERS.

PHOENIX COUNTRY DAY SCHOOL, MARICOPA COUNTY RECORDER'S PARCEL #S 170-09-001A & 170-09-001B

RESPONSIBILITY FOR COMPLIANCE

THE DEVELOPMENT, CONSTRUCTION AND USAGE OF THE PROPERTY SHALL BE IN STRICT COMPLIANCE WITH THE AMENDED SPECIAL USE PERMIT ISSUED BY THE TOWN OF PARADISE VALLEY.

SHEET LIST

- SUP-8 OVERALL CAMPUS SITE PLAN
- SUP-9 PARTIAL CAMPUS SIGNAGE SITE PLAN
- SUP-10 PERMITTED TENNIS COURTS SIGNAGE
- SUP-11 PERMITTED AQUATICS CENTER SIGNAGE
- SUP-12 PROPOSED MONUMENT SIGNAGE
- SUP-13 PROPOSED GYMNASIUM SIGNAGE
- SUP-14 PROPOSED COURTYARD MURAL GRAPHIC
- SUP-15 EXISTING MONUMENT SIGNAGE

454 S Farmer Ave., Suite 101
Tempe AZ, 85281
T 480.894.4637
F 480.894.4638
www.architekton.com

ARCHITEKTON

PHOENIX COUNTRY DAY SCHOOL - SIGNAGE
3901 EAST STANFORD DRIVE PARADISE VALLEY, AZ

No	Description	Date
	SUP-SIGNAGE	4.3.2015



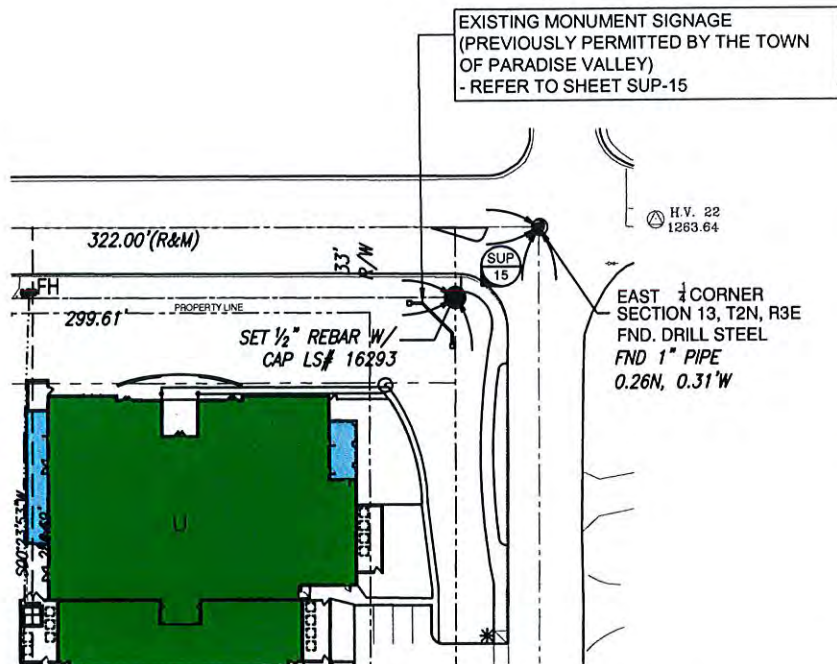
464 S Farmer Ave., Suite 101
Tempe AZ, 85281
T 480.894.4637
F 480.894.4638
www.architekton.com

ARCHITEKTON

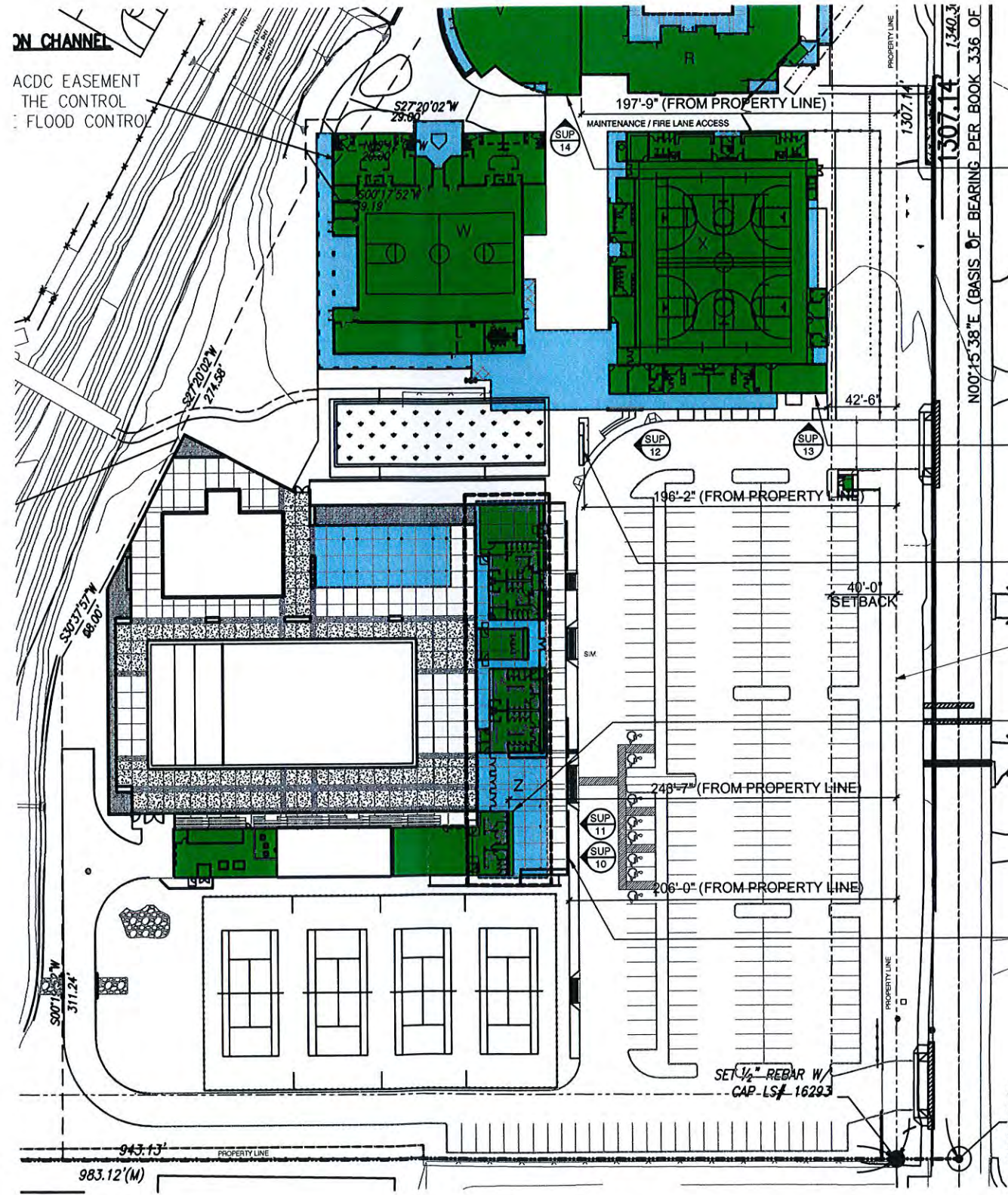
PHOENIX COUNTRY DAY SCHOOL - SIGNAGE
3901 EAST STANFORD DRIVE PARADISE VALLEY, AZ

No.	Description	Date
	SUP-SIGNAGE	4.3.2015

PARTIAL CAMPUS
SIGNAGE SITE
PLANS
SUP-9



EXISTING CAMPUS MONUMENT SIGNAGE SITE PLAN
1" = 40'-0"



ATHLETIC FACILITIES SIGNAGE SITE PLAN
1" = 40'-0"

PROPOSED SURFACE PAINTED MURAL
- REFER TO SHEET SUP-14

PROPOSED BUILDING-MOUNTED SIGNAGE
- REFER TO SHEET SUP-13

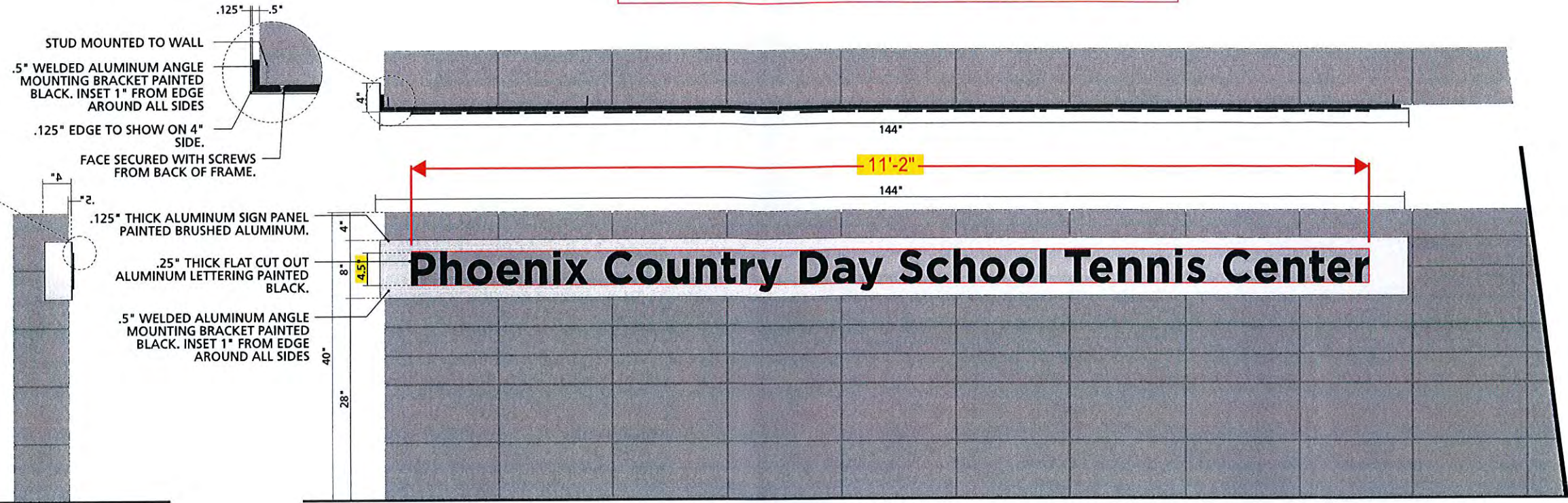
PROPOSED MONUMENT SIGNAGE
- REFER TO SHEET SUP-12

PROPOSED AQUATICS FACILITY BUILDING
MOUNTED SIGNAGE (PREVIOUSLY
PERMITTED BY THE TOWN OF PARADISE
VALLEY)
- REFER TO SHEET SUP-11

PROPOSED TENNIS FACILITY MONUMENT
SIGNAGE (PREVIOUSLY PERMITTED BY
THE TOWN OF PARADISE VALLEY)
- REFER TO SHEET SUP-10

FND CITY OF PHOENIX
BRASS CAP 0.06' WEST
OF THE EAST LINE OF
THE S.E. QUARTER OF
SECTION 13

+/- 4.18 sq. ft. total signage/verbiage area



WRAPPING TENNIS ID
scale: 3/4" = 1'-0"

Dimensioned elevations of signage



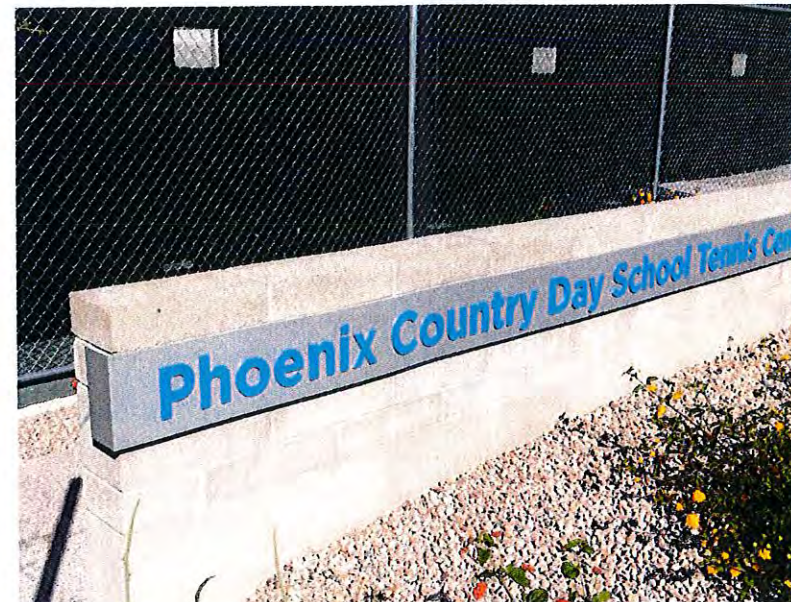
404 S Farmer Ave., Suite 101
Tempe AZ, 85281
T 480.894.4637
F 480.894.4638
www.architekton.com

ARCHITEKTON

PHOENIX COUNTRY DAY SCHOOL - SIGNAGE
3901 EAST STANFORD DRIVE PARADISE VALLEY, AZ



Front view of signage



Detail view of signage

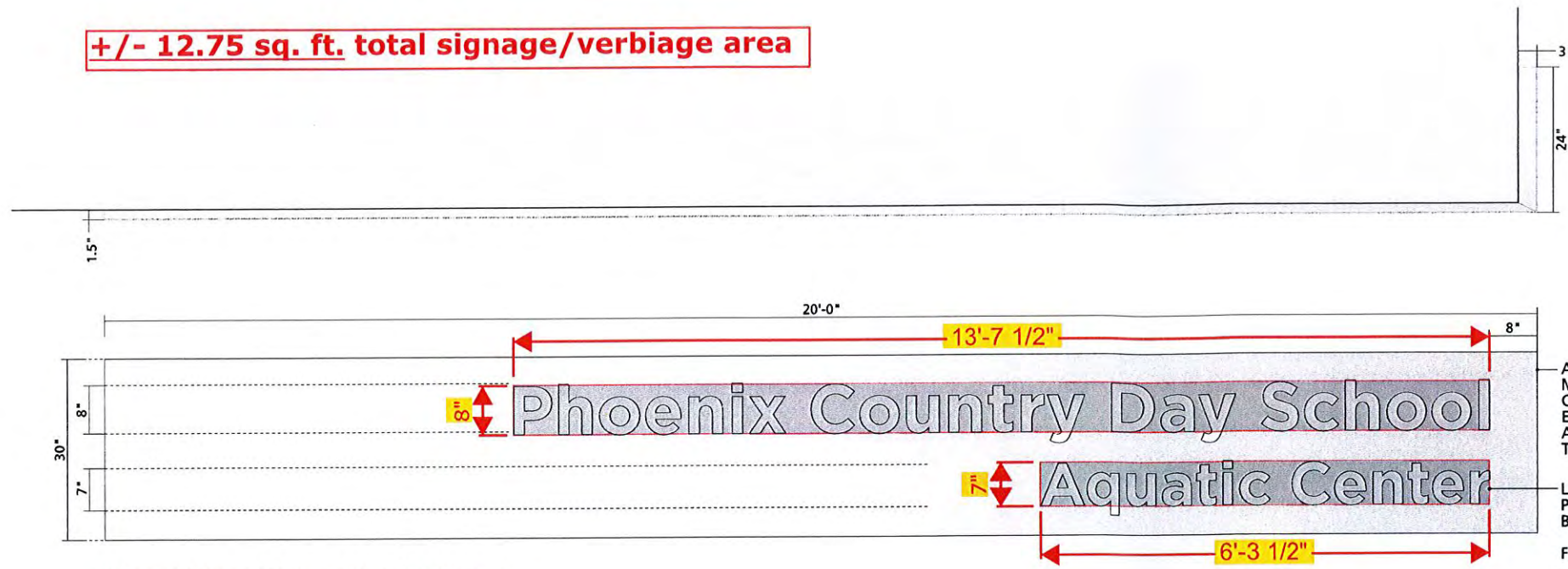


View of signage with context

No.	Description	Date
-	-	-
	SUP-SIGNAGE	4.3.2016

PROPOSED
TENNIS COURTS
SIGNAGE
SUP-10

+/- 12.75 sq. ft. total signage/verbiage area

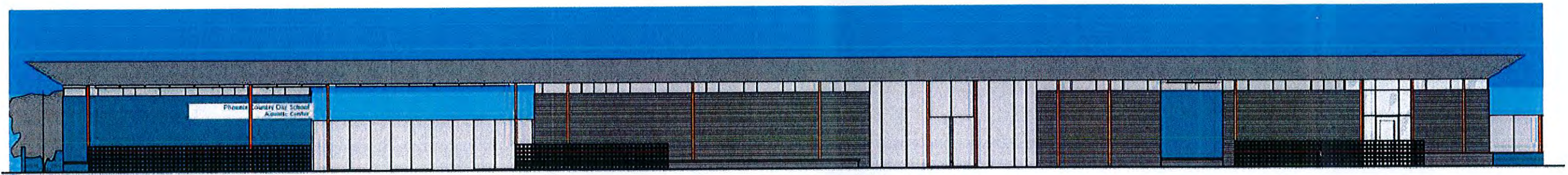


Dimensioned elevations of signage

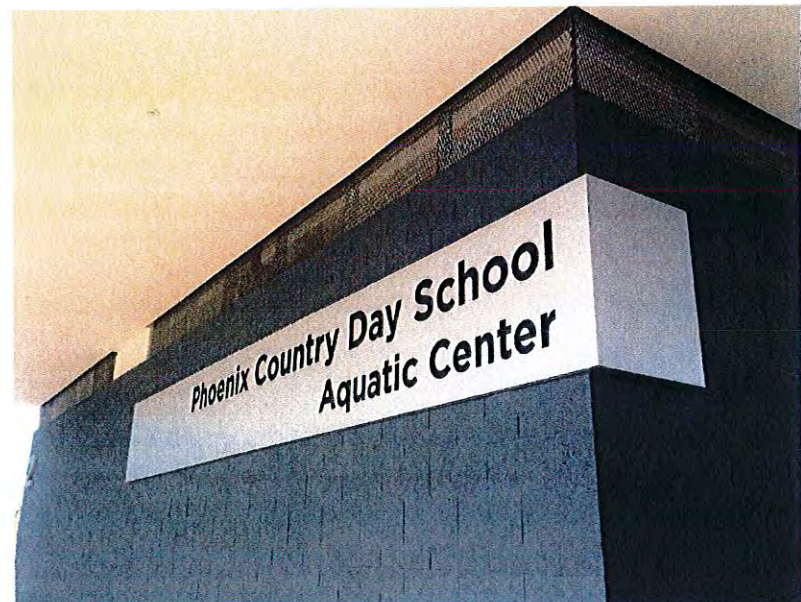
ALUMINUM WRAPPING CABINET PAINTED MATTHEWS BRUSHED ALUMINUM. CABINET HOUSED LED LOW VOLTAGE ELECTRICAL WIRING AND LED UNITS ALONG TOP TO SHINE DOWN THRU THE LETTERING AND DOWN THE WALL.

LETTERING IS ROUTED OUT OF FACE PANEL TO ALLOW THE BLUE WALL BEYOND TO SHOW THRU.

FONT: GOTHAM BOLD



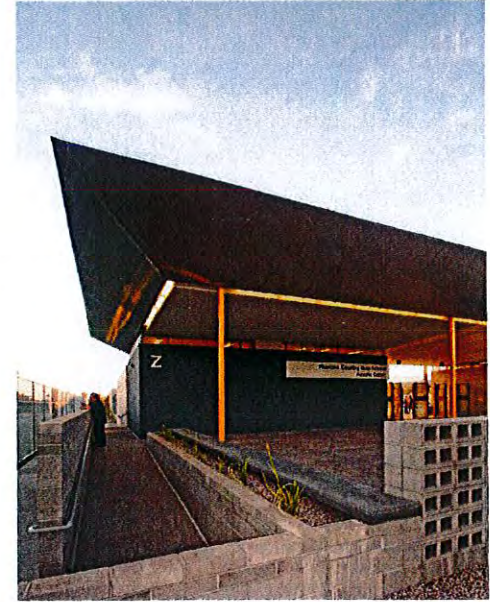
Rendered elevation of building with signage



Detail view of signage



View of signage with context



View of signage with context



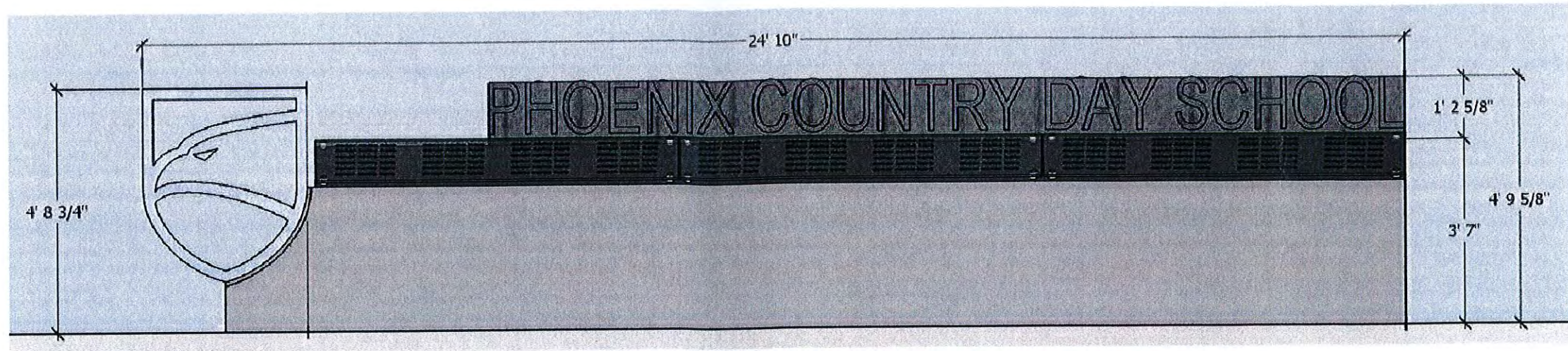
464 S Farmer Ave., Suite 101
Tempe AZ, 85281
T 480.894.4637
F 480.894.4638
www.architekton.com

ARCHITEKTON

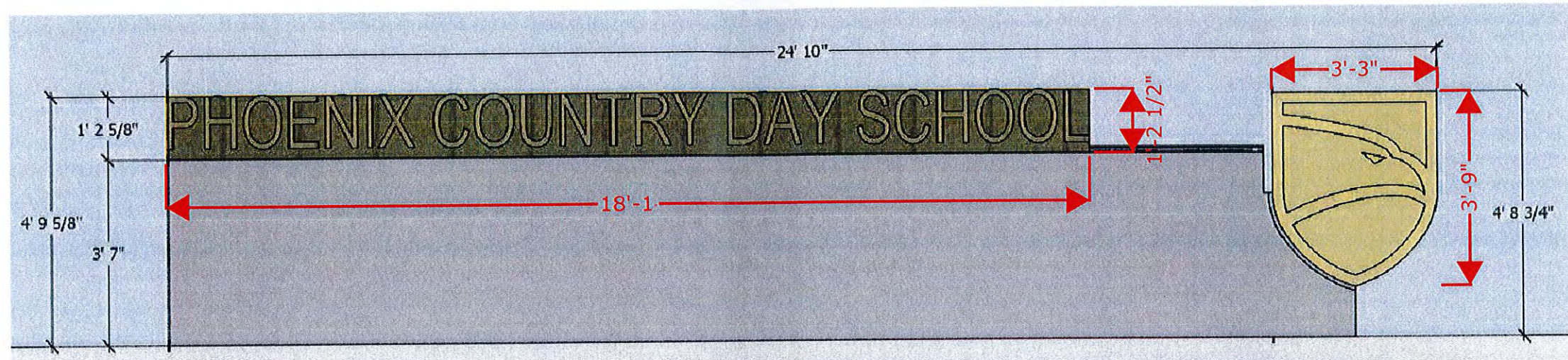
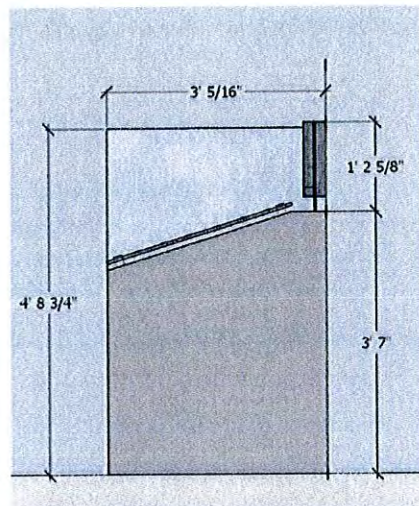
PHOENIX COUNTRY DAY SCHOOL - SIGNAGE
3901 EAST STANFORD DRIVE PARADISE VALLEY, AZ

No	Description	Date
	SUP-SIGNAGE	4.3.2016

PROPOSED
AQUATICS CENTER
SIGNAGE
SUP-11



+/- 32.34 sq. ft. total signage/verbiage area



Dimensioned elevations of proposed monument sign



View of monument sign with context



View of monument sign from 40th Street right-of-way



404 S Farmer Ave., Suite 101
Tempe AZ, 85281
T 480.894.4637
F 480.894.4638
www.architekton.com

ARCHITEKTON

PHOENIX COUNTRY DAY SCHOOL - SIGNAGE
3901 EAST STANFORD DRIVE PARADISE VALLEY, AZ

No	Description	Date
	SUP-SIGNAGE	4.3.2015

PROPOSED
MONUMENT
SIGNAGE

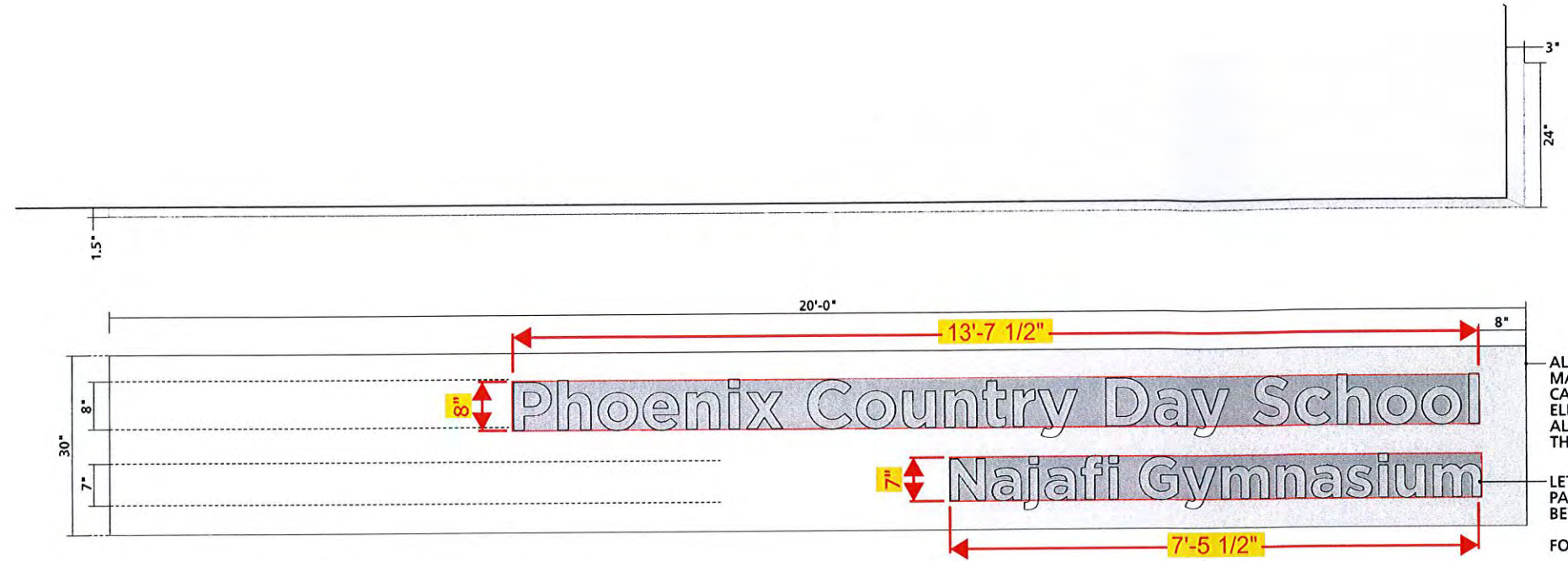
SUP-12



464 S Farmer Ave., Suite 101
 Tempe AZ, 85281
 T 480.894.4637
 F 480.894.4638
 www.architekton.com

ARCHITEKTON

PHOENIX COUNTRY DAY SCHOOL - SIGNAGE
 3901 EAST STANFORD DRIVE PARADISE VALLEY, AZ



ALUMINUM WRAPPING CABINET PAINTED MATTHEWS BRUSHED ALUMINUM. CABINET HOUSED LED LOW VOLTAGE ELECTRICAL WIRING AND WHITE LED UNITS ALONG TOP TO SHINE DOWN THRU THE LETTERING AND DOWN THE WALL.

LETTERING IS ROUTED OUT OF FACE PANEL TO ALLOW THE BLUE WALL BEYOND TO SHOW THRU.

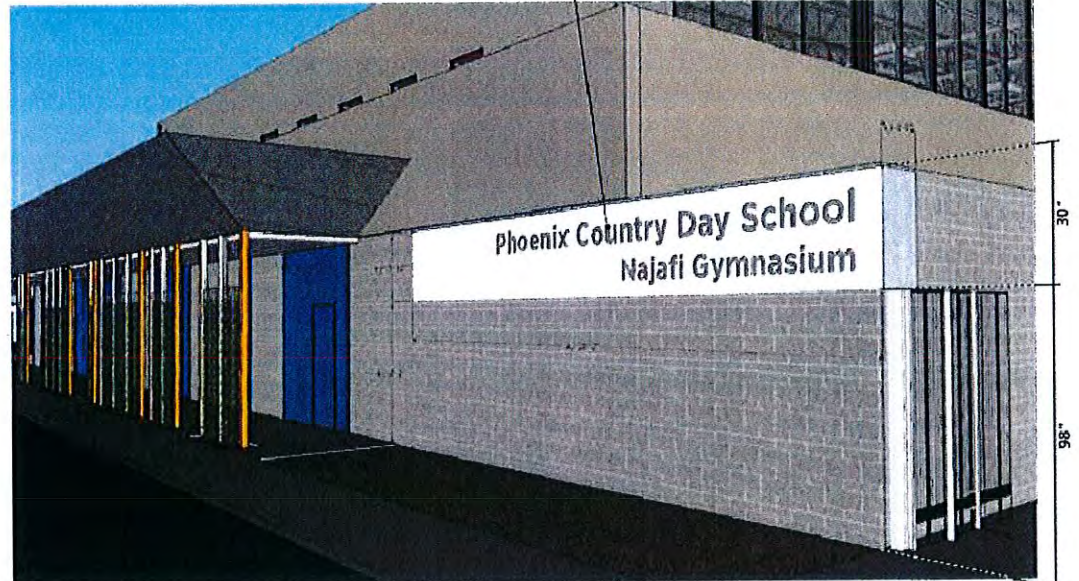
FONT: GOTHAM BOLD

ALUMINUM REVERSE PAN CHANNEL WITH 2" RETURNS PAINTED MATTHEWS BRUSHED ALUMINUM CLIP MOUNTED FLUSH TO WALL.

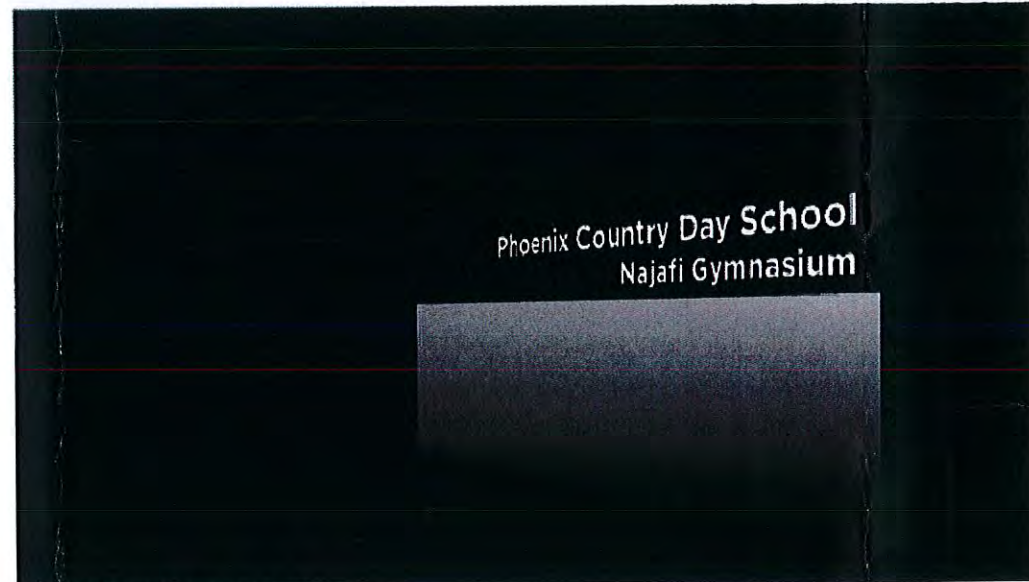
Dimensioned elevations of signage

+/- 13.42 sq. ft. total signage/verbiage area

NOTE: WALL PAINTED TO MATCH BLUE TRIM BEHIND LETTERING



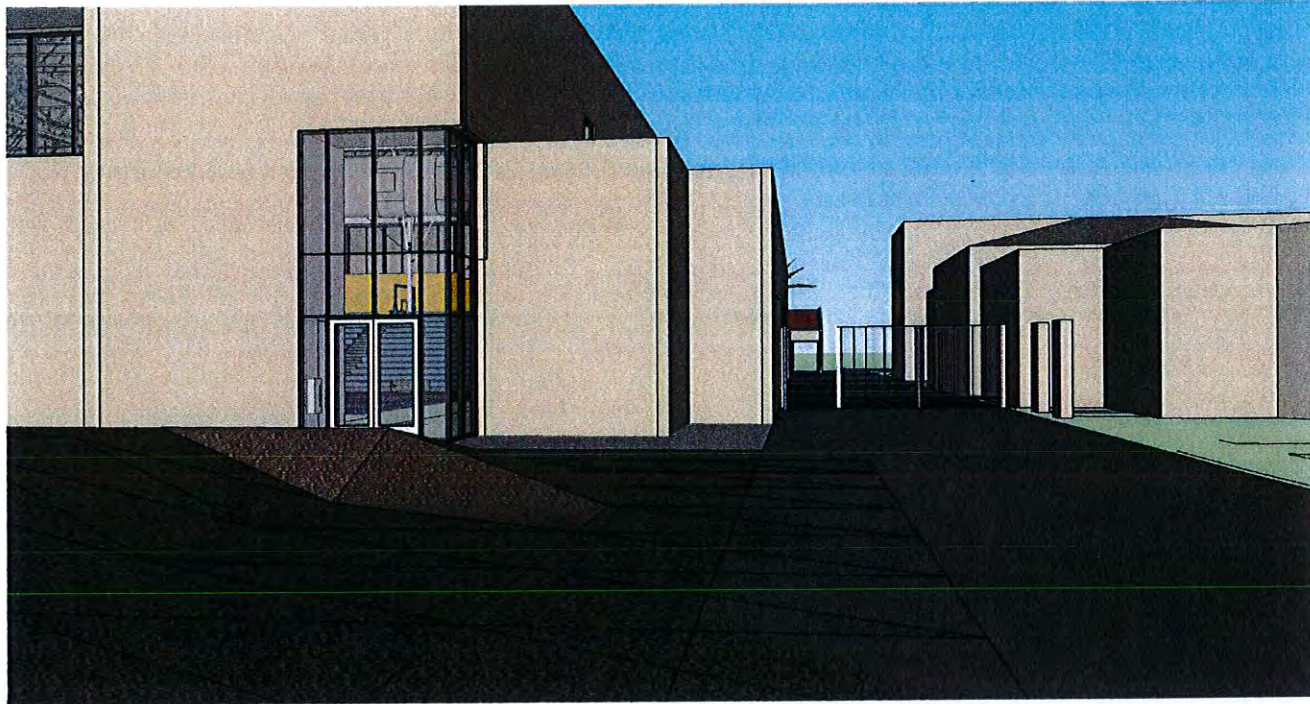
View of signage with context



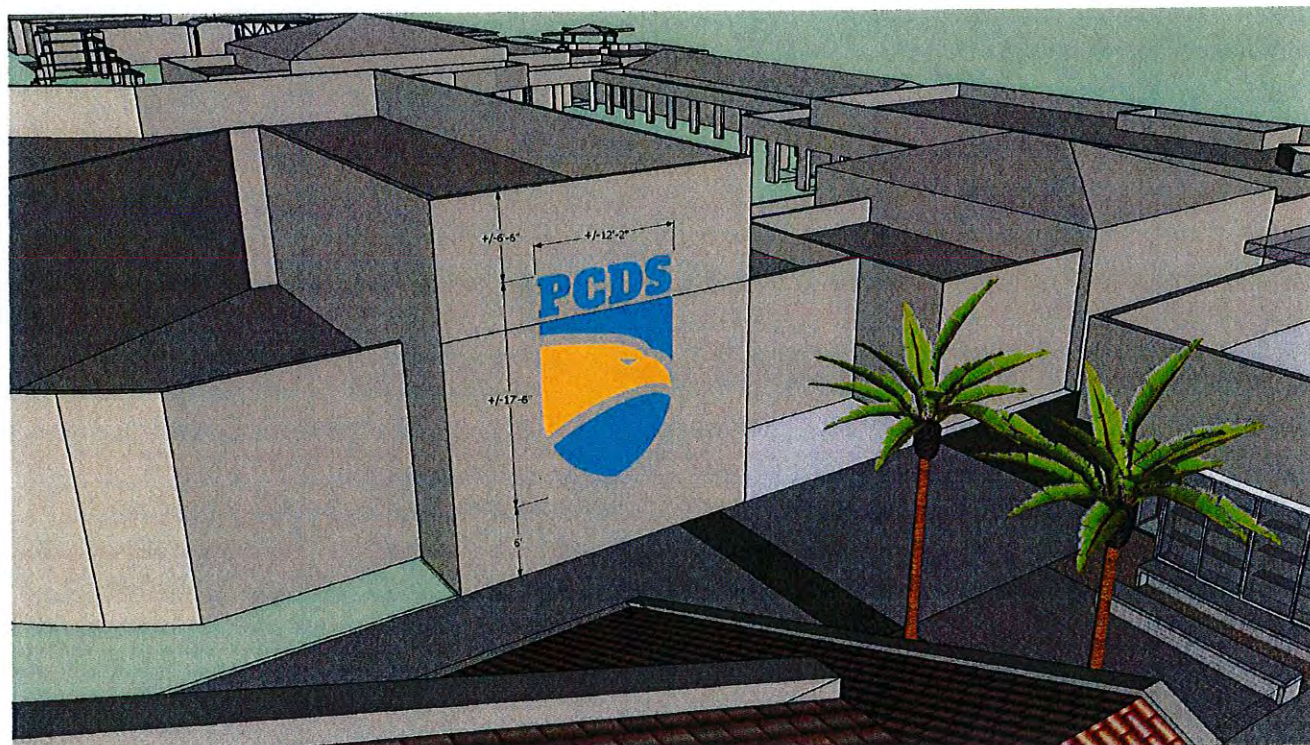
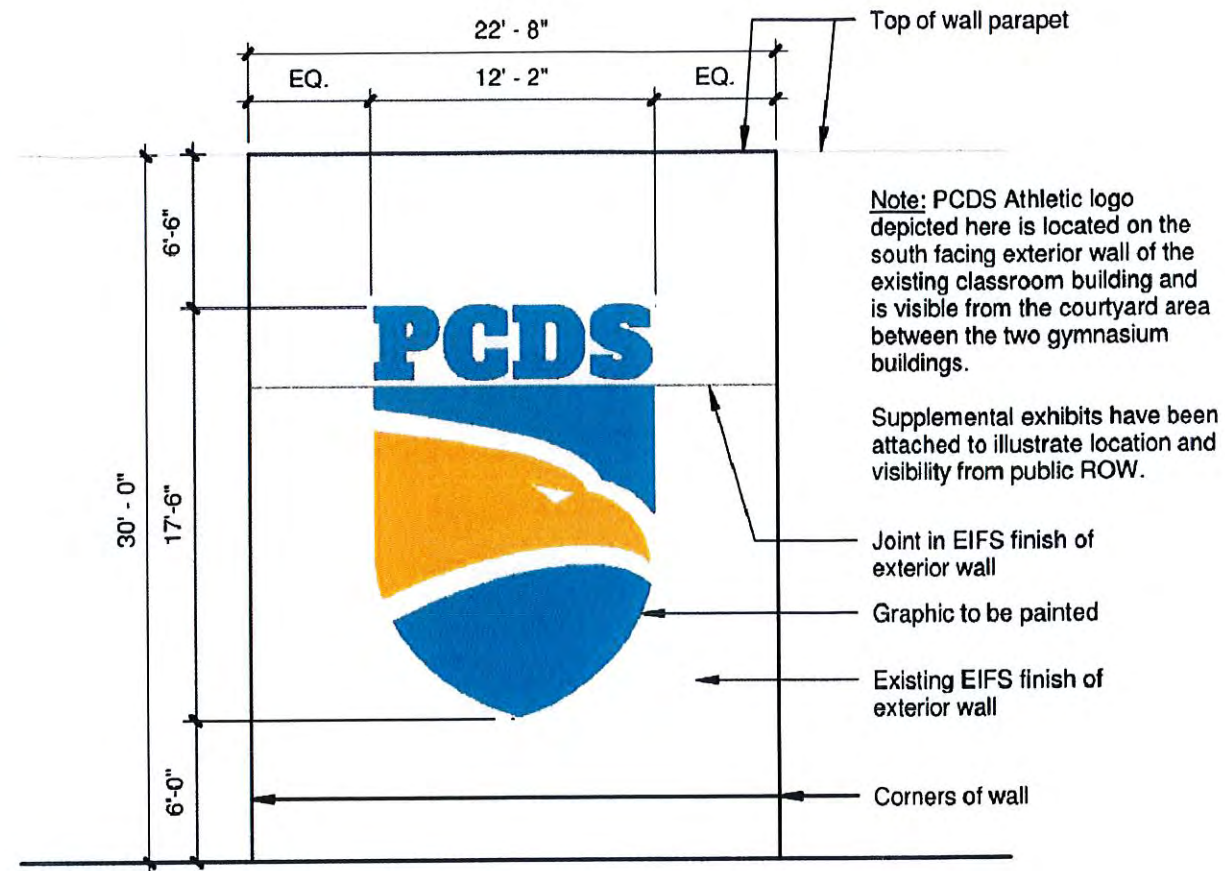
ILLUMINATED SIGN AT NIGHT

No	Description	Date
-	-	-
	SUP-SIGNAGE	4.3.2015

PROPOSED GYMNASIUM SIGNAGE
SUP-13



Oblique view of mural from 40th Street right-of-way



Aerial view of mural with context



View of mural from south approach of Walk of Champions



ARCHITEKTON

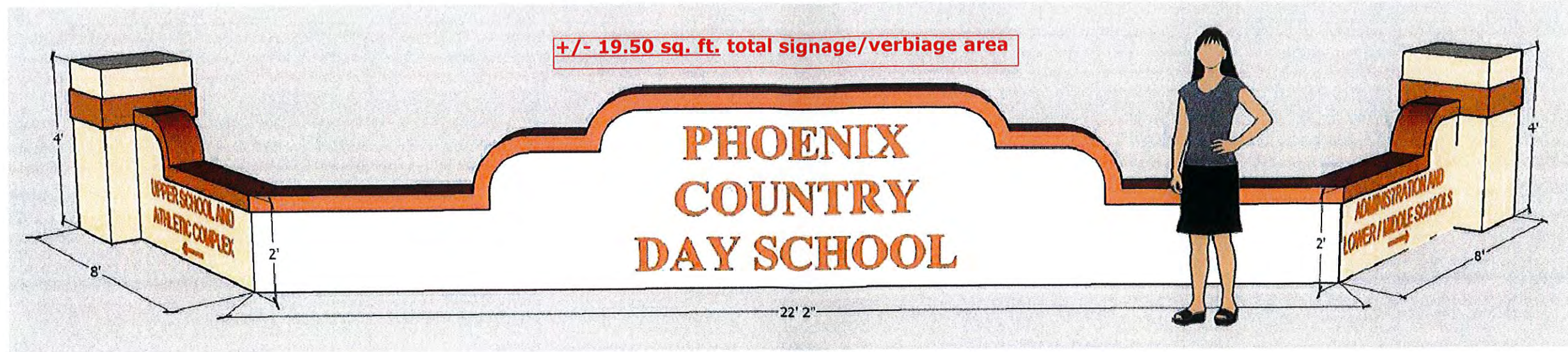
464 S Farmer Ave., Suite 101
Tempe AZ, 85281
T 480.894.4637
F 480.894.4638
www.architekton.com

PHOENIX COUNTRY DAY SCHOOL - SIGNAGE
3901 EAST STANFORD DRIVE PARADISE VALLEY, AZ

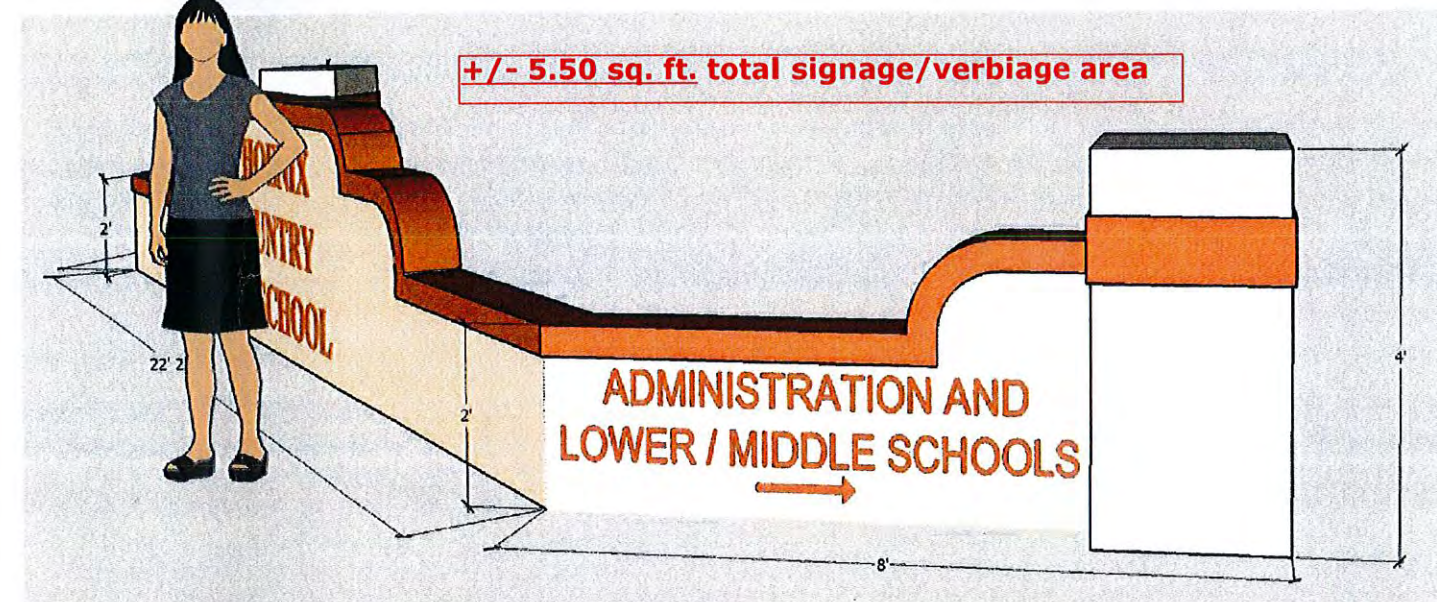
No	Description	Date
	SUP-SIGNAGE	4.3.2015

PROPOSED
COURTYARD MURAL
GRAPHIC

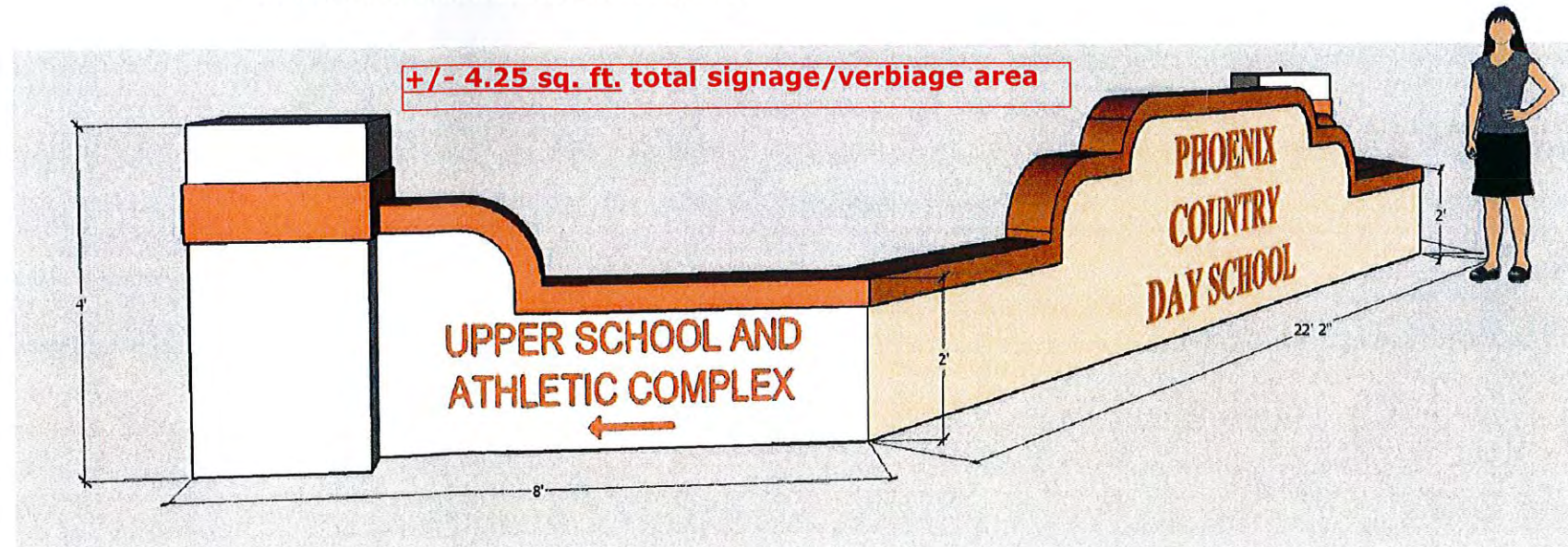
SUP-14



Front elevation of existing monument signage



Elevation of existing monument signage



Elevation of existing monument signage



ARCHITEKTON

404 S Farmer Ave., Suite 101
Tempe AZ, 85281
T 480.894.4637
F 480.894.4638
www.architekton.com

PHOENIX COUNTRY DAY SCHOOL - SIGNAGE
3901 EAST STANFORD DRIVE PARADISE VALLEY, AZ

No.	Description	Date
	SUP-SIGNAGE	4.3.2015

EXISTING MONUMENT SIGNAGE
SUP-15