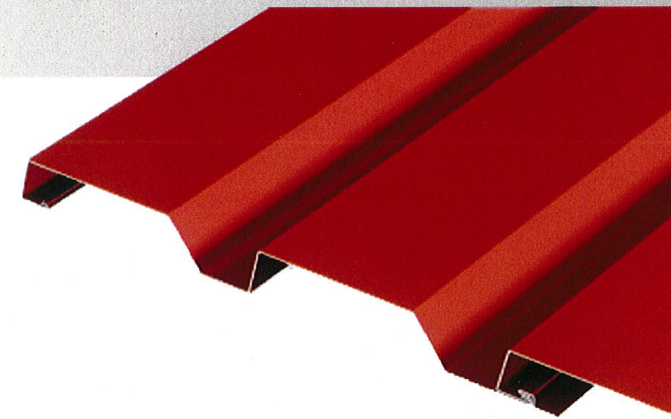


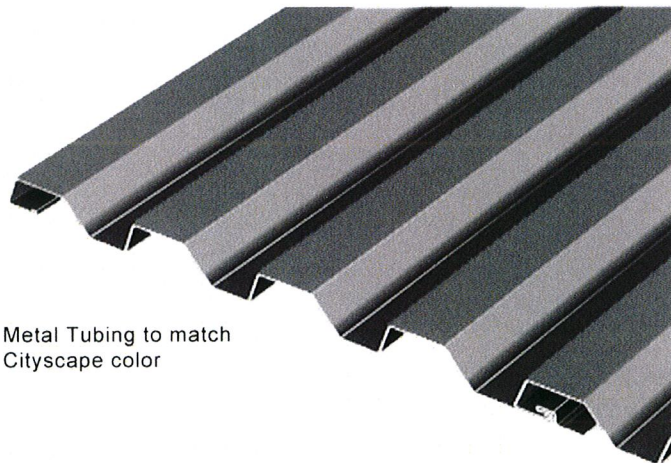
# Materials Samples and Color Pallate for SANCTUARY INTERSTITIAL KEYS & POOL AREA SUP Amendment 17-057



The Sanctuary Resort & Spa on Camelback Mountain



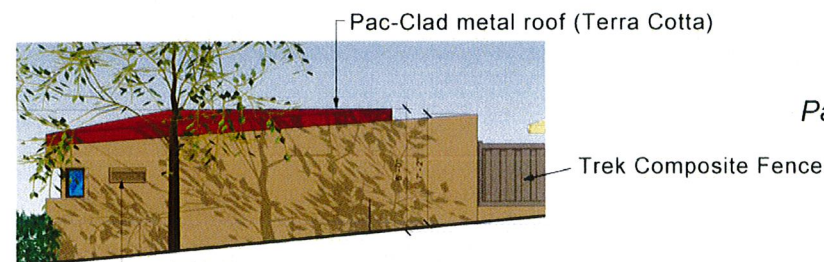
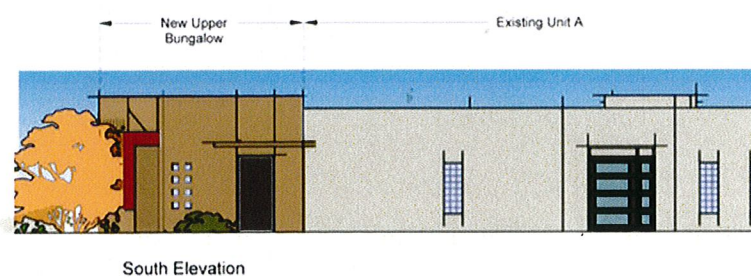
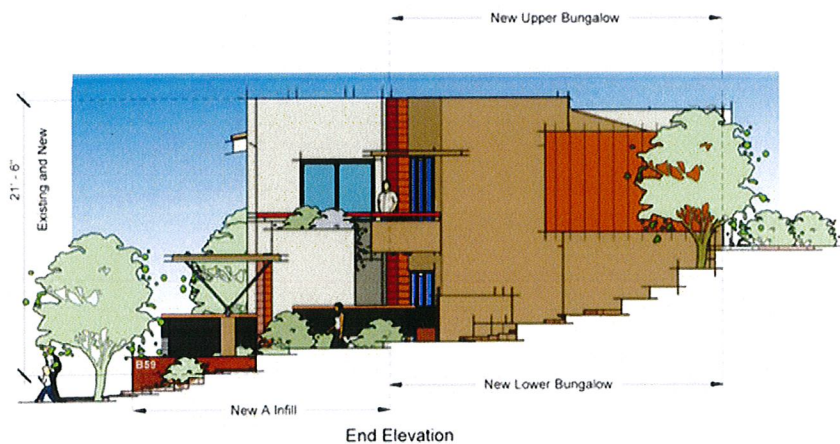
metal siding- wide pattern  
**Pac-Clad Highline C2**



metal siding- narrow pattern  
**Pac-Clad HWP**

Metal Tubing to match Cityscape color

Typ Mech Enclosure      Typ Mech Enclosure  
New B Infill Bungalow      New A Infill Bungalow      Typ Mech Enclosure  
New Lower End Bungalow



Snack Bar & Pool Area

new stucco

Sherwin Williams 6145  
**Thatch Brown**  
LRV=17

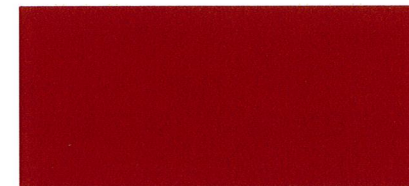


existing stucco

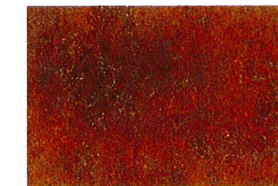
**Whippoorwill**  
LRV=63



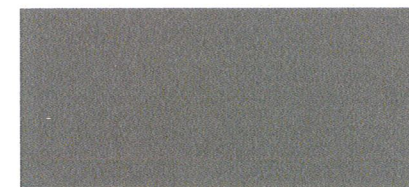
Pac-Clad metal siding  
**Terra Cotta**  
LRV=10



**rusted metal sign**  
LRV approx equivalence=11



Pac-Clad metal siding  
**Cityscape**  
LRV=21



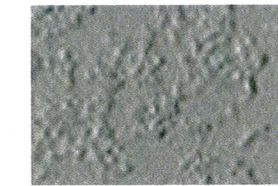
**Fleetwood Aluminum Doors**  
**Martin Statuary Bronze**  
Kynar 500 Finish

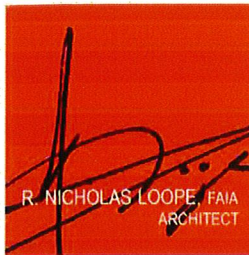


Trek Composite Fencing  
**Winchester Gray**  
LRV=19



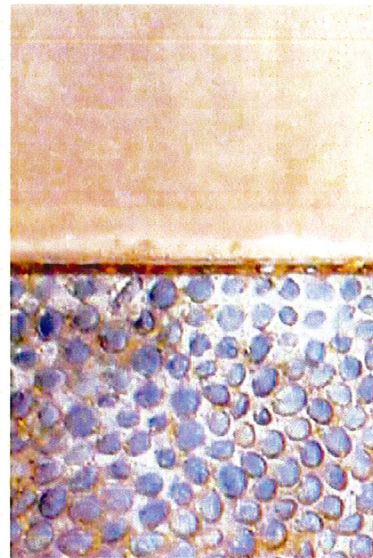
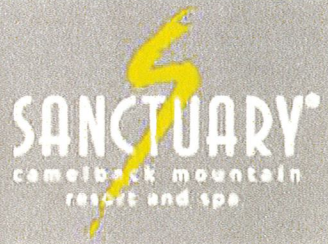
**SunWest Kool Deck**  
**Dove Gray**  
LRV=30





# Materials Samples and Color Pallate for THE VIEWS CONFERENCE CENTER EXPANSION SUP Amendment 17-057

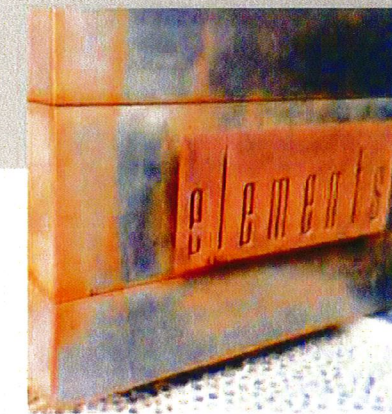
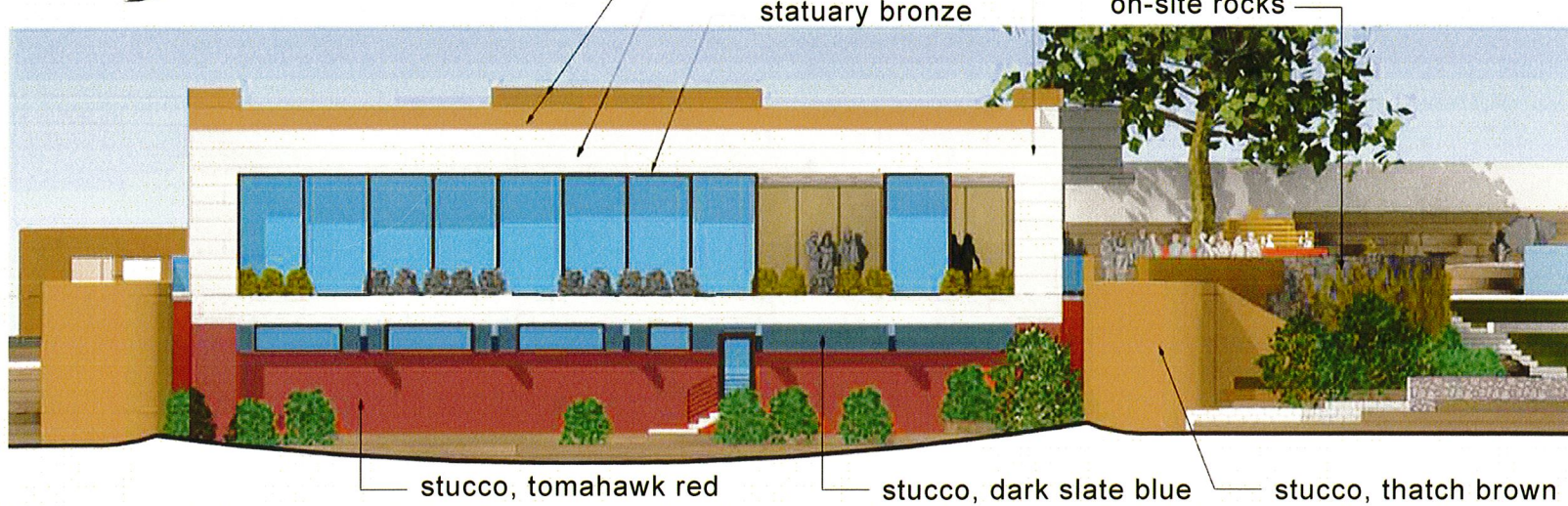
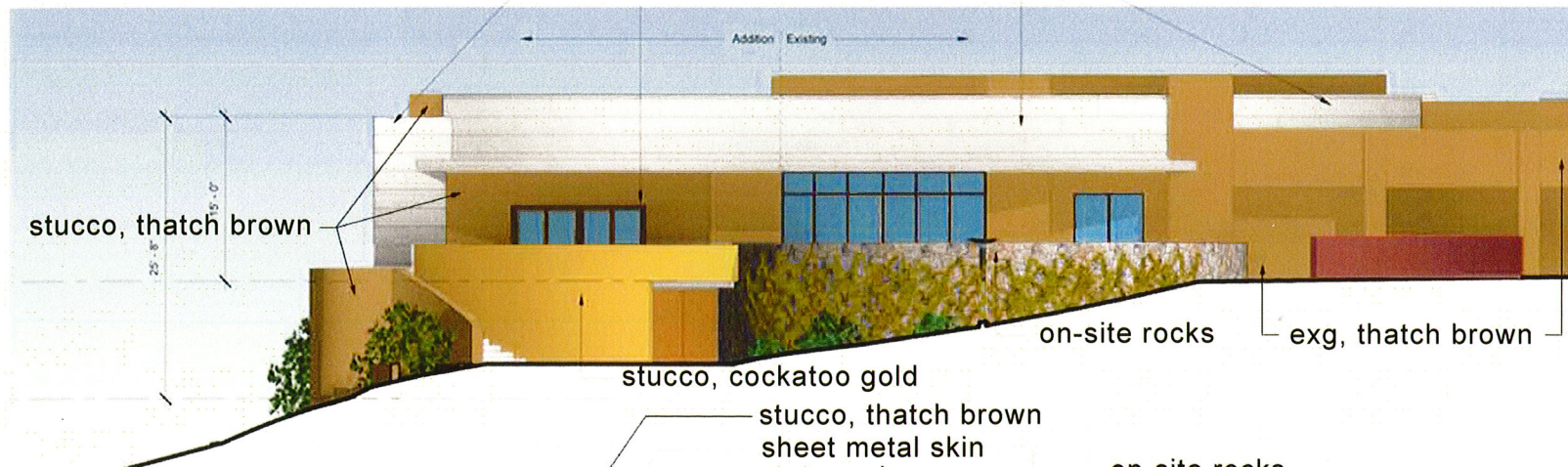
## The Sanctuary Resort & Spa on Camelback Mountain



hardscape paving surfaces  
black tile, black pebble  
broomed finish concrete

on-site rocks  
stone veneer  
natural

sheet metal skin  
low-e double glazed vision glass

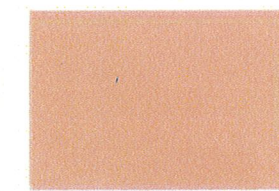
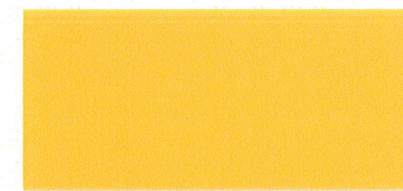


*Element Metals*  
**unpolished sheet metal skin**  
LRV=31 (oxidized patina shown above  
(color equivalency to Dunn Edwards Walrus))



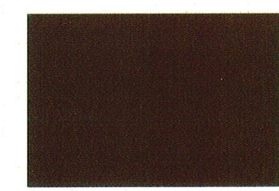
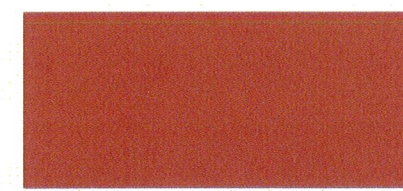
*Dunn Edwards*  
**Walrus DE6368**  
LRV=31  
(color equivalency for sheet metal skin)

*PPG*  
**Cockatoo Gold**  
LRV=22



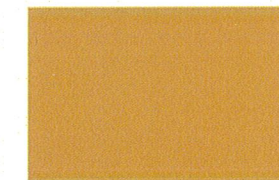
*Pro Tech EC-100*  
**Brown Owl**  
LRV=33  
foam roof coating

*PPG*  
**Tomahawk Red**  
LRV=14



*Fleetwood Aluminum Doors*  
**Martin Statuary Bronze**  
Kynar 500 Finish

*Sherwin Williams*  
**Dark Blue Slate**  
LRV=8



*existing bldg color to be matched:*  
*Sherwin Williams 6145*  
**Thatch Brown**  
LRV=17