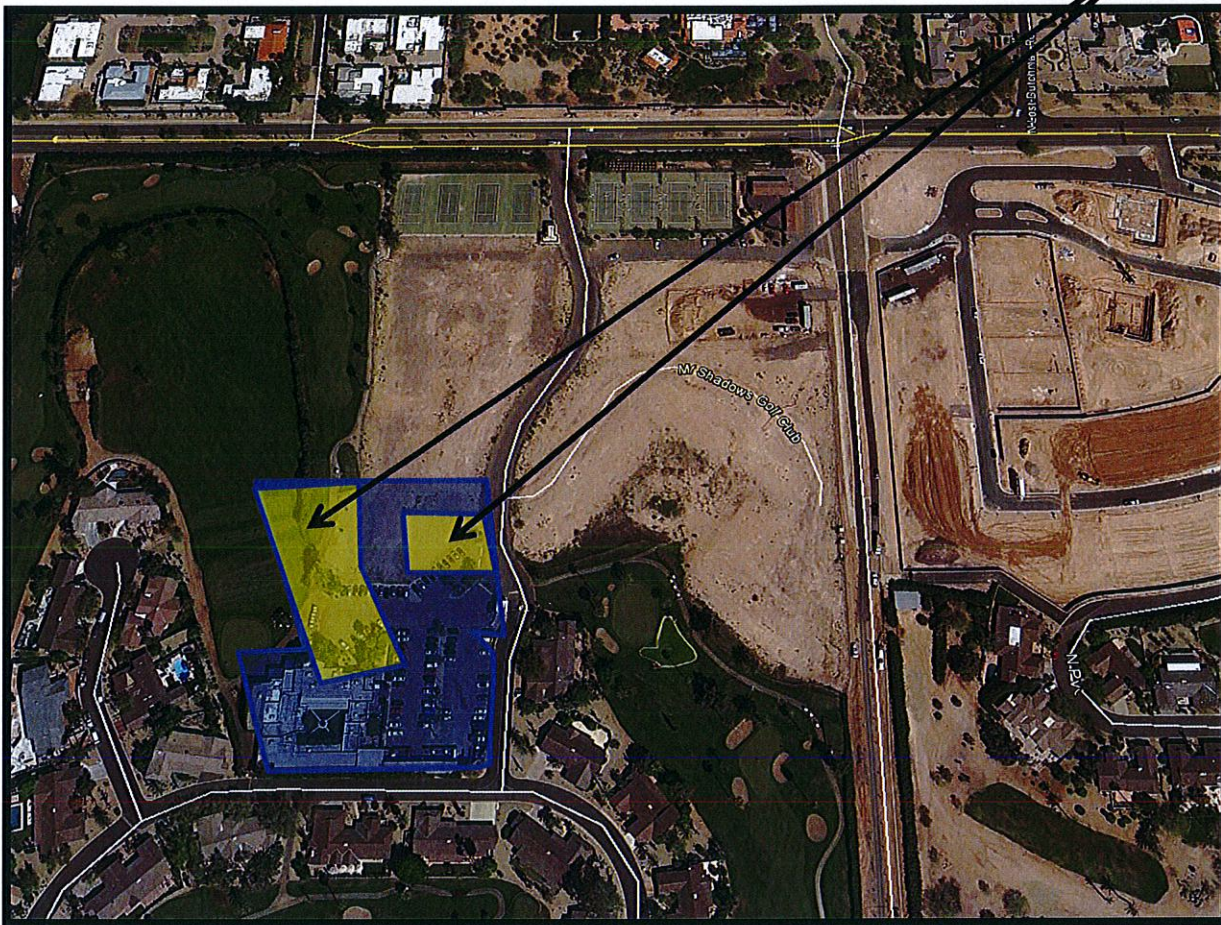




# VICINITY MAP

**Subject Property**



"The Villas at Mountain Shadows – Amended - Condominiums"

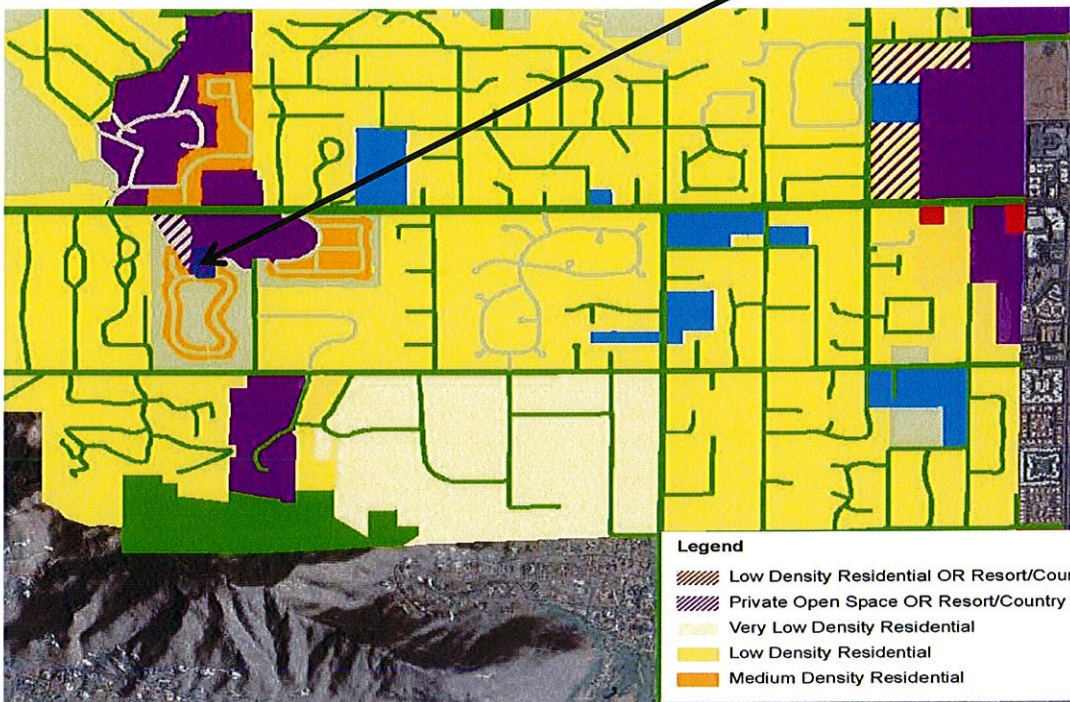
Preliminary Condominium Plat Map (PP 16-01)

Southwest Corner Lincoln Drive and 56<sup>th</sup> Street (Assessor No. 169-30-103)



# GENERAL PLAN

Subject Property



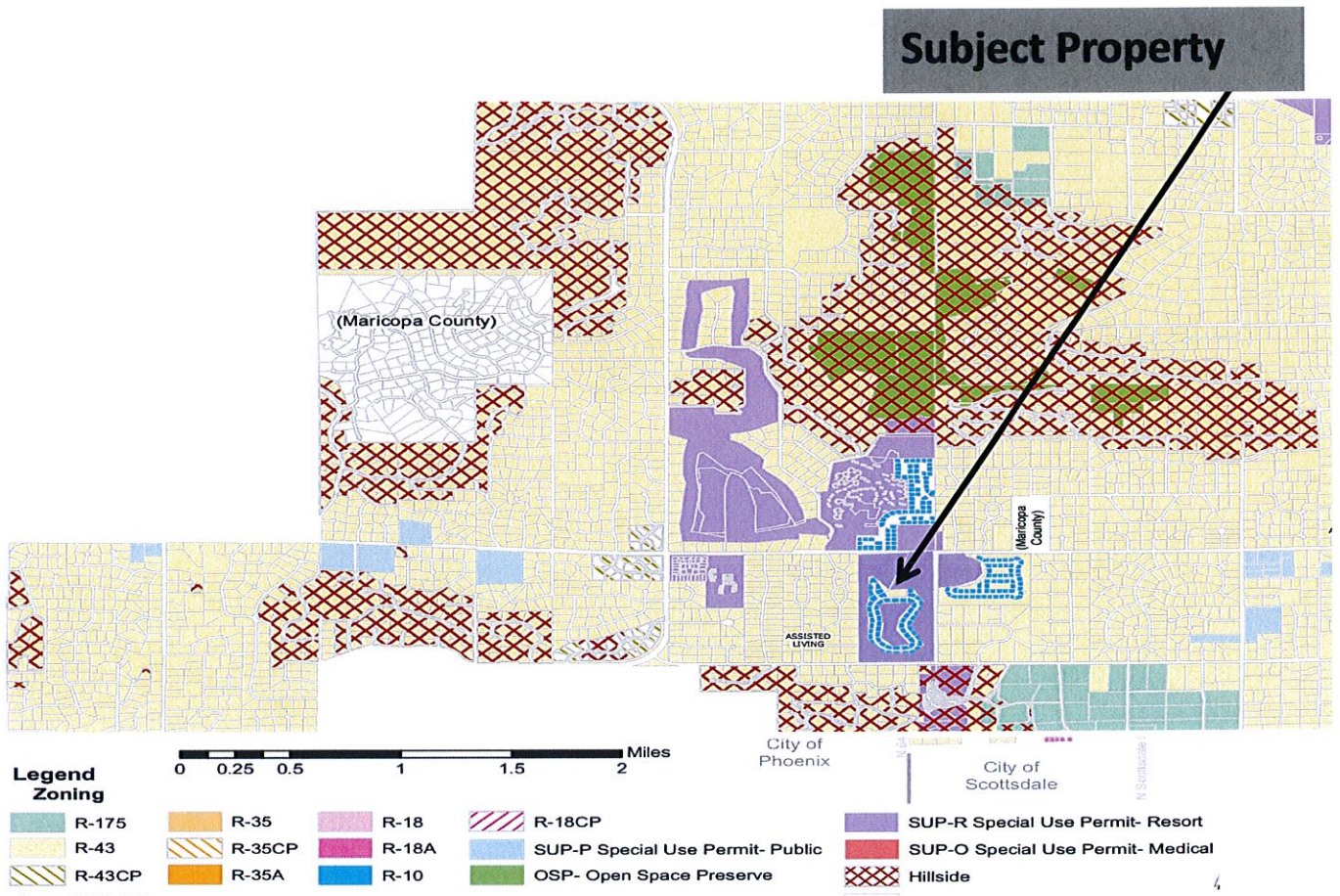
"The Villas at Mountain Shadows – Amended - Condominiums"

Preliminary Condominium Plat Map (PP 16-01)

Southwest Corner Lincoln Drive and 56<sup>th</sup> Street (Assessor No. 169-30-103)



# ZONING MAP



1.0 acres of 67-acre site

“The Villas at Mountain Shadows – Amended - Condominiums”

Preliminary Condominium Plat Map (PP 16-01)

Southwest Corner Lincoln Drive and 56<sup>th</sup> Street (Assessor No. 169-30-103)