

1 BLDG A NORTH ELEVATION

SECTION / ELEVATION LEGEND

EIFS TEXTURE SMOOTH	MESASTONE RUTHERFORD GREY	HONED BLOCK MASONRY
CONCRETE	TREX COMPOSITE DECKING	



2 BLDG A WEST ELEVATION



VIEW OF BLDG A LOOKING NORTH

orcutt|winslow

2929 n central ave
eleventh floor
phoenix arizona 85012

602.257.1764 t
602.257.9029 f

www.owp.com

© 2017 this (hard copy or electronic) drawing is an instrument of service and the property of the Orcutt|Winslow Partnership and shall remain their property. The design professional shall not be responsible for any alterations, modifications or additions made to this drawing by any party other than the design professional. Use of this drawing shall be limited to the original use for which it was prepared and publication thereof is expressly limited to such use, in use or reproduction. Unless otherwise agreed in writing, design professional reserves all copyright or other proprietary interest in this drawing, and it may not be reused for any other purpose without the design professional's written consent. Publication by any method in whole or part is prohibited without the written permission of the design professional. Any information obtained or conclusions derived from this drawing shall be at the user's sole risk.

mountain view medical center, LLC
Mountain View Medical Center Redevelopment
 10555, 10565, 10575, 10585, 10595, 10599 N. Tatum Blvd., Paradise Valley, Arizona 85253

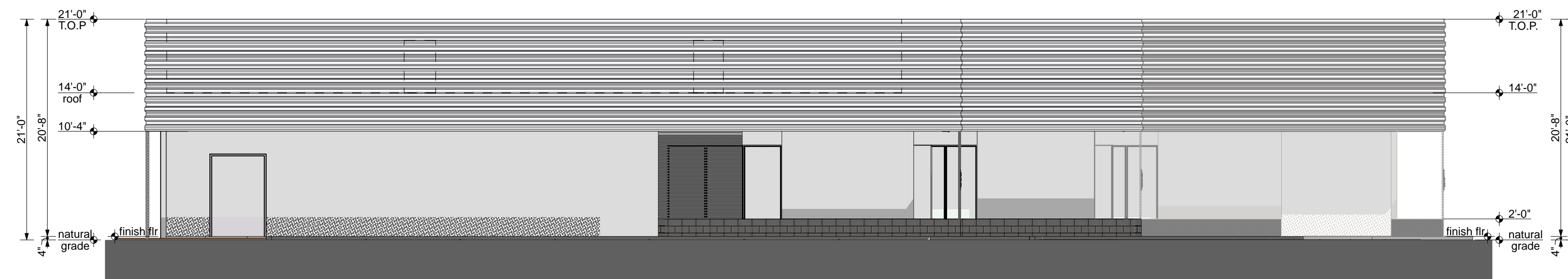
CLIENT CONTACT
 mountain view medical center, LLC
 2944 N. 44th St.
 Phoenix, AZ 85018

PROJECT NO.	DATE OF ISSUE
2018_041	02.07.2019
REVISION NO.	DATE
1	09.26.2018
2	11.01.2018
3	01.22.2019
4	02.19.2019

PROJECT TEAM DRAWN BY
 John Cantrell BD

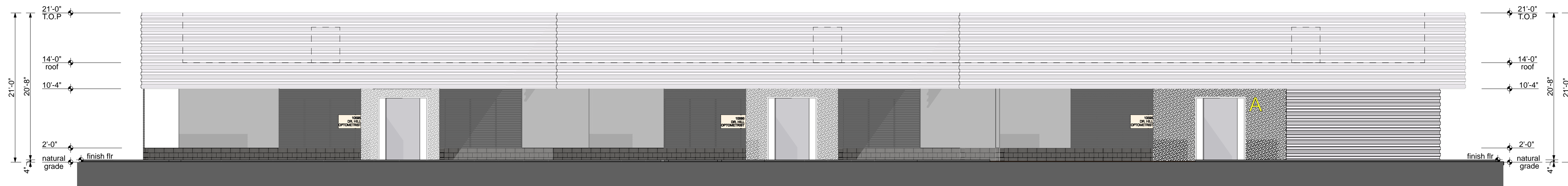
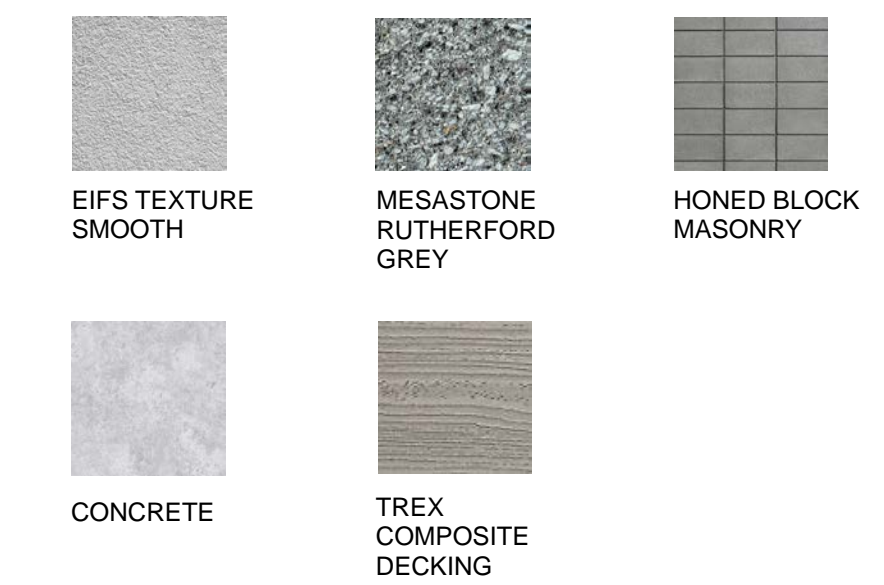
PROJECT PHASE
 SUP major amendment
 Review #4
SHEET CONTENTS
 building A

SHEET NO.
 05.4.1



1 BLDG A SOUTH ELEVATION

SECTION / ELEVATION LEGEND



2 BLDG A EAST ELEVATION



VIEW OF BUILDING A ENTRIES

orcutt | winslow
 2929 n central ave
 eleventh floor
 phoenix arizona 85012
 602.257.1764 t
 602.257.9029 f
 www.owp.com

© 2017 this (hard copy or electronic) drawing is an instrument of service and the property of the Orcutt|Winslow Partnership and shall remain their property. The design professional shall not be responsible for any alterations, modifications or additions made to this drawing by any party other than the design professional. Use of this drawing shall be limited to the original use for which it was prepared and publication thereof is expressly limited to such use, in use or reproduction. Unless otherwise agreed in writing, design professional reserves all copyright or other proprietary interest in this drawing, and it may not be reused for any other purpose without the design professional's written consent. Publication by any method in whole or part is prohibited without the written permission of the design professional. Any information obtained or conclusions derived from this drawing shall be at the user's sole risk.

mountain view medical center, LLC
Mountain View Medical Center Redevelopment
 10555, 10565, 10575, 10585, 10595, 10599 N. Tatum Blvd , Paradise Valley, Arizona 85253

CLIENT CONTACT
 mountain view medical center, LLC
 2944 N. 44th St.
 Phoenix, AZ 85018

PROJECT NO.	DATE OF ISSUE
2018_041	02.07.2019
REVISION NO.	DATE
1	09.26.2018
2	11.01.2018
3	01.22.2019
4	02.19.2019

PROJECT TEAM DRAWN BY
John Cantrell **BD**

PROJECT PHASE
SUP major amendment Review #4
SHEET CONTENTS

building A

SHEET NO.

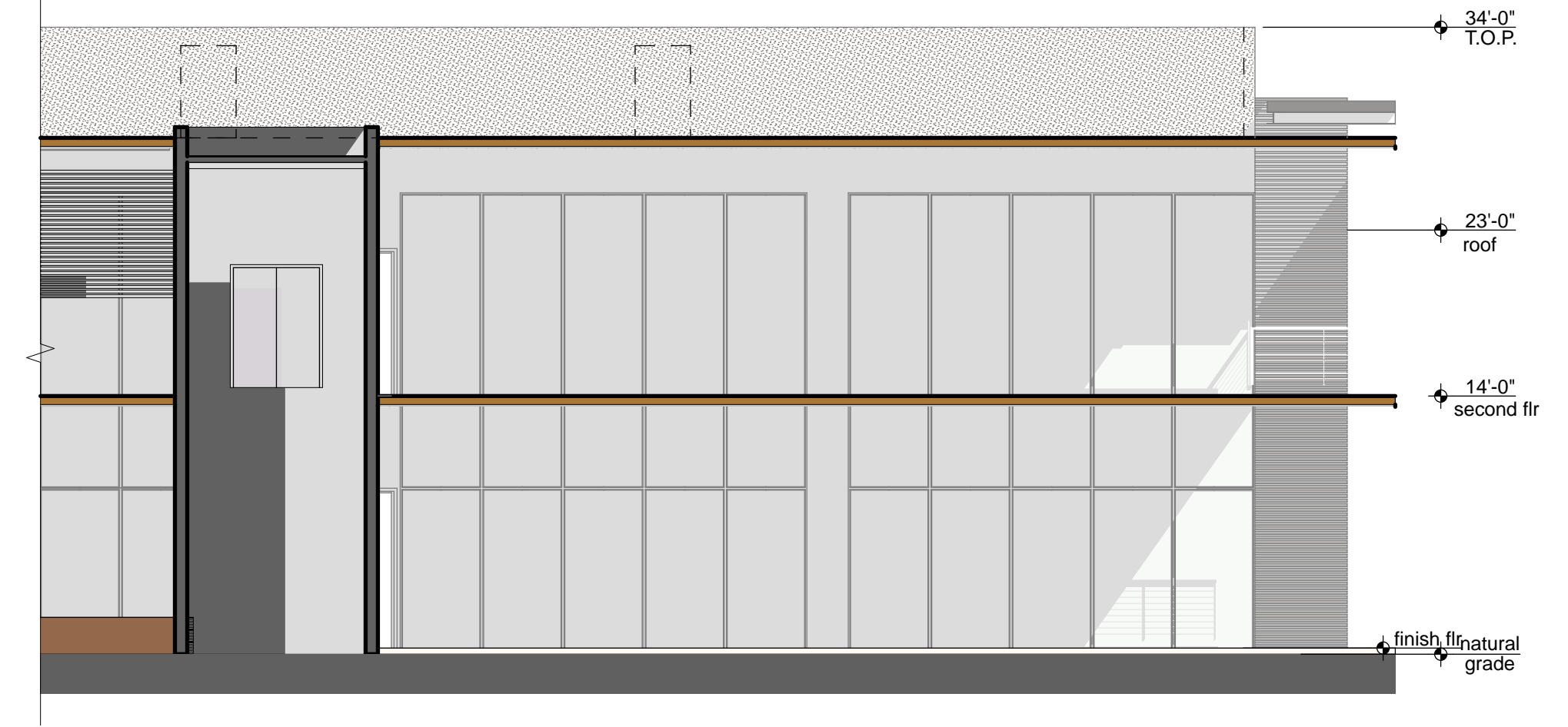
05.4.2



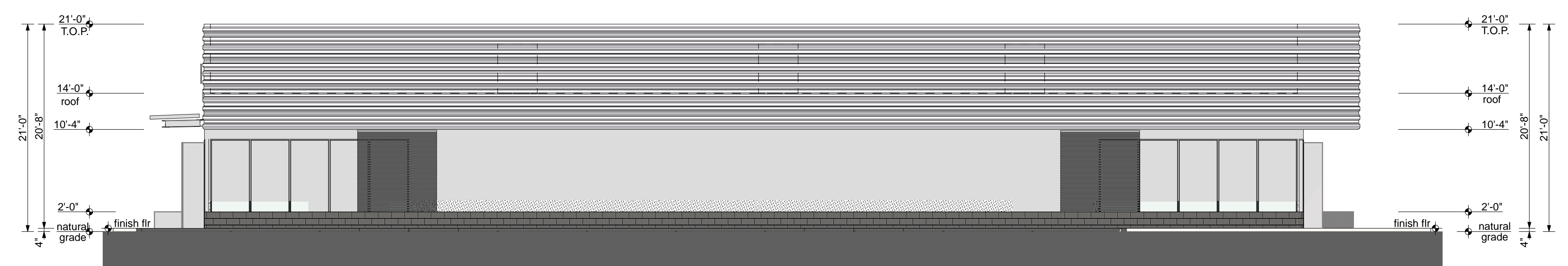
SECTION / ELEVATION LEGEND

EIFS TEXTURE SMOOTH	MESASTONE RUTHERFORD GREY	HONED BLOCK MASONRY
CONCRETE	TREX COMPOSITE DECKING	

1 BLDGS B & C EAST ELEVATION



2 BLDGS B & C EAST ELEVATION



3 BLDG B SOUTH ELEVATION



VIEW FROM SHEA BLVD AND TATUM BLVD INTERSECTION

2929 n central ave
eleventh floor
phoenix arizona 85012

602.257.1764 t
602.257.9029 f

www.owp.com

© 2017 this third copy or electronic drawing is an instrument of service and the property of the Arcutt|Winslow Partnership and shall remain their property. The design professional shall not be responsible for any alterations, modifications or additions made to this drawing by any party other than the design professional. Use of this drawing shall be limited to the original use for which it was prepared and publication thereof is expressly limited to such use, in use or reproduction. Unless otherwise agreed in writing, the design professional reserves all copyright or other proprietary interest in this drawing, and it may not be used for any other purpose without the design professional's written consent. Publication by any method in whole or part is prohibited without the written permission of the design professional. Any information obtained or conclusions derived from this drawing shall be at the user's sole risk.

mountain view medical center, LLC
Mountain View Medical Center Redevelopment
10555, 10565, 10575, 10585, 10595, 10599 N. Tatum Blvd., Paradise Valley, Arizona 85253

CLIENT CONTACT
mountain view medical center, LLC
2944 N. 44th St.
Phoenix, AZ 85018

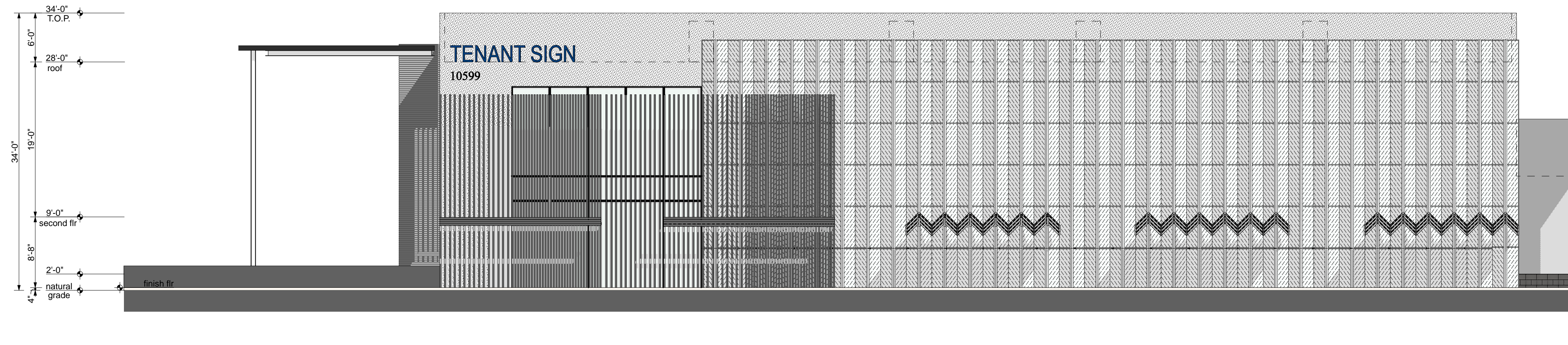
PROJECT NO.	DATE OF ISSUE
2018_041	02.07.2019
REVISION NO.	DATE
1	09.26.2018
2	11.01.2018
3	01.22.2019
4	02.19.2019

PROJECT TEAM
John Cantrell BD




PROJECT PHASE
SUP major amendment
Review #4
buildings B and C

SHEET NO.
05.4.3

Orcutt|Winslow Project 2018_041 Mountain View Medical Center Redevelopment. Elevations Sheet 05.4.4 buildings B and C. was plotted by Bhoomi Desai on Monday, February 11, 2019 at 4:44 PM. file found at BIM Server: HC Bimserver - BIMcloud Basic for ARCHICAD 21/Health Care Studio/18_041-01MinViewMedicalCtrRdevlpmt



SECTION / ELEVATION LEGEND

 EIFS TEXTURE SMOOTH	 MESASTONE RUTHERFORD GREY	 HONED BLOCK MASONRY
 CONCRETE	 TREX COMPOSITE DECKING	

1 BLDGS B & C WEST ELEVATION



2 BLDGS B & C WEST ELEVATION



BLDGS B & C LOOKING NORTH EAST

2929 n central ave
eleventh floor
phoenix arizona 85012

602.257.1764 t
602.257.9029 f
www.owp.com



© 2017 this third copy or electronic drawing is an instrument of service and the property of the Orcutt|Winslow Partnership and shall remain their property. The design professional shall not be responsible for any alterations, modifications or additions made to this drawing by any party other than the design professional. Use of this drawing shall be limited to the original use for which it was prepared and publication thereof is expressly limited to such use, in use or reproduction. Unless otherwise agreed in writing, design professional reserves all copyright or other proprietary interest in this drawing, and it may not be used for any other purpose without the design professional's written consent. Publication by any method in whole or part is prohibited without the written permission of the design professional. Any information obtained or conclusions derived from this drawing shall be at the user's sole risk.

mountain view medical center, LLC
Mountain View Medical Center Redevelopment
10555, 10565, 10575, 10585, 10595, 10599 N. Tatum Blvd., Paradise Valley, Arizona 85253

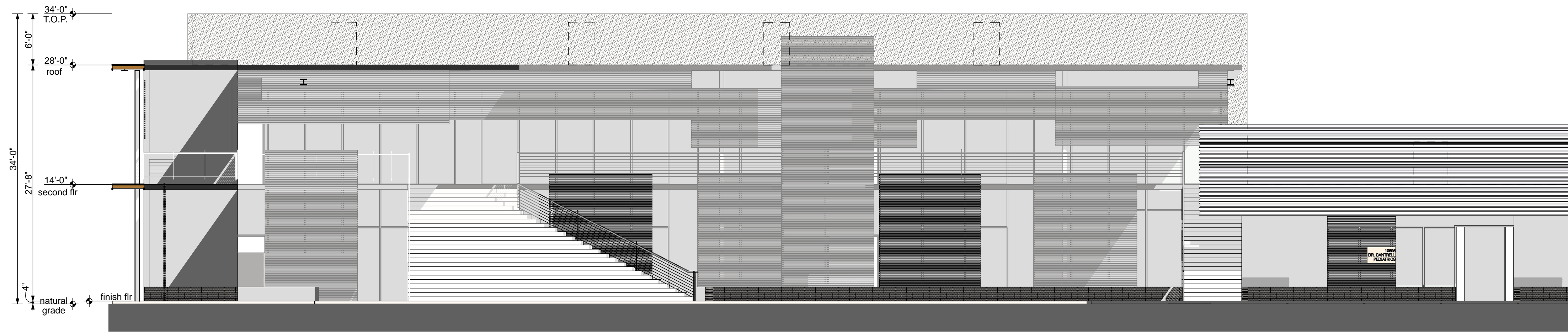
CLIENT CONTACT
mountain view medical center, LLC
2944 N. 44th St.
Phoenix, AZ 85018

PROJECT NO.	DATE OF ISSUE
2018_041	02.07.2019
REVISION NO.	DATE
1	09.26.2018
2	11.01.2018
3	01.22.2019
4	02.19.2019

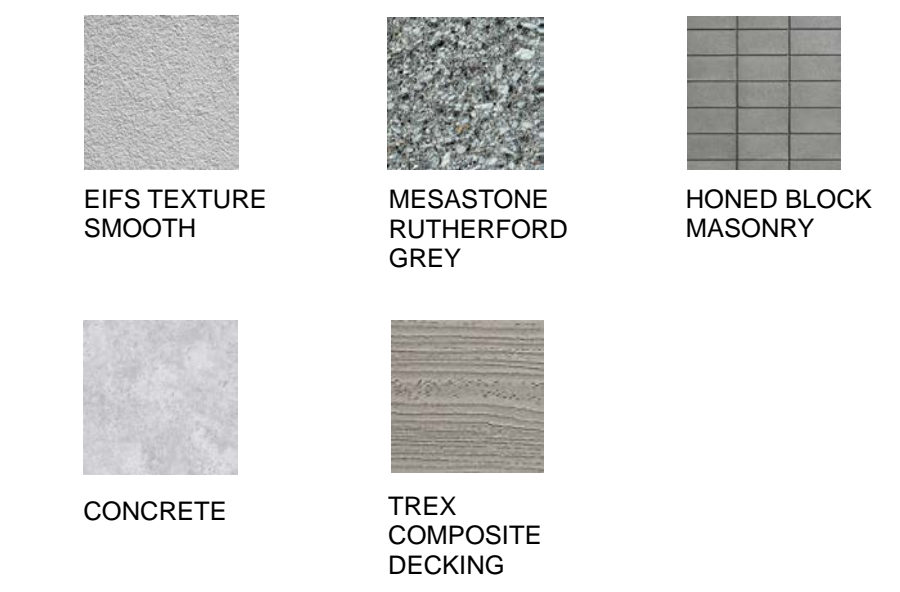
PROJECT TEAM **DRAWN BY**
John Cantrell BD

PROJECT PHASE
SUP major amendment
Review #4
SHEET CONTENTS
buildings B and C

SHEET NO.
05.4.4



SECTION / ELEVATION LEGEND



1 BLDGS D & E SOUTH ELEVATION



2 BLDGS D & E SOUTH ELEVATION



BLDGS B,C,D,E LOOKING NORTH WEST

orcutt|winslow

2929 n central ave
eleventh floor
phoenix arizona 85012

602.257.1764 t
602.257.9029 f

www.owp.com

© 2017 this (hard copy or electronic) drawing is an instrument of service and the property of the Orcutt|Winslow Partnership and shall remain their property. The design professional shall not be responsible for any alterations, modifications or additions made to this drawing by any party other than the design professional. Use of this drawing shall be limited to the original use for which it was prepared and publication thereof is expressly limited to such use, in use or reproduction. Unless otherwise agreed in writing, design professional reserves all copyright or other proprietary interest in this drawing, and it may not be used for any other purpose without the design professional's written consent. Publication by any method in whole or part is prohibited without the written permission of the design professional. Any information obtained or conclusions derived from this drawing shall be at the user's sole risk.

mountain view medical center, LLC
Mountain View Medical Center Redevelopment
 10555, 10565, 10575, 10585, 10595, 10599 N. Tatum Blvd., Paradise Valley, Arizona 85253

CLIENT CONTACT
 mountain view medical center, LLC
 2944 N. 44th St.
 Phoenix, AZ 85018

PROJECT NO.	DATE OF ISSUE
2018_041	02.07.2019
REVISION NO.	DATE
1	09.26.2018
2	11.01.2018
3	01.22.2019
4	02.19.2019

PROJECT TEAM DRAWN BY
 John Cantrell BD

PROJECT PHASE
 SUP major amendment
 Review #4

SHEET CONTENTS
 buildings D and E

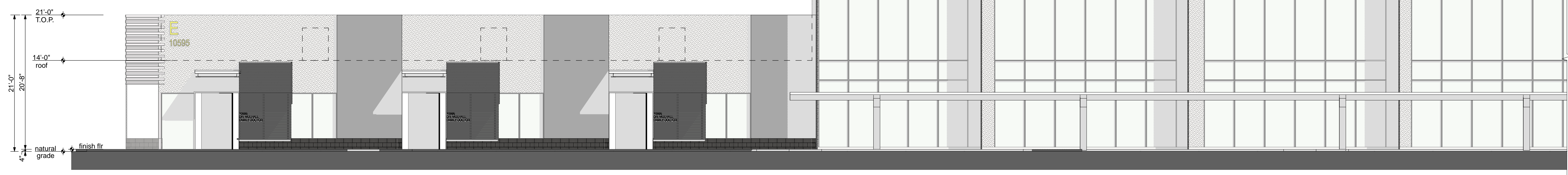
SHEET NO.
 05.4.5

SECTION / ELEVATION LEGEND

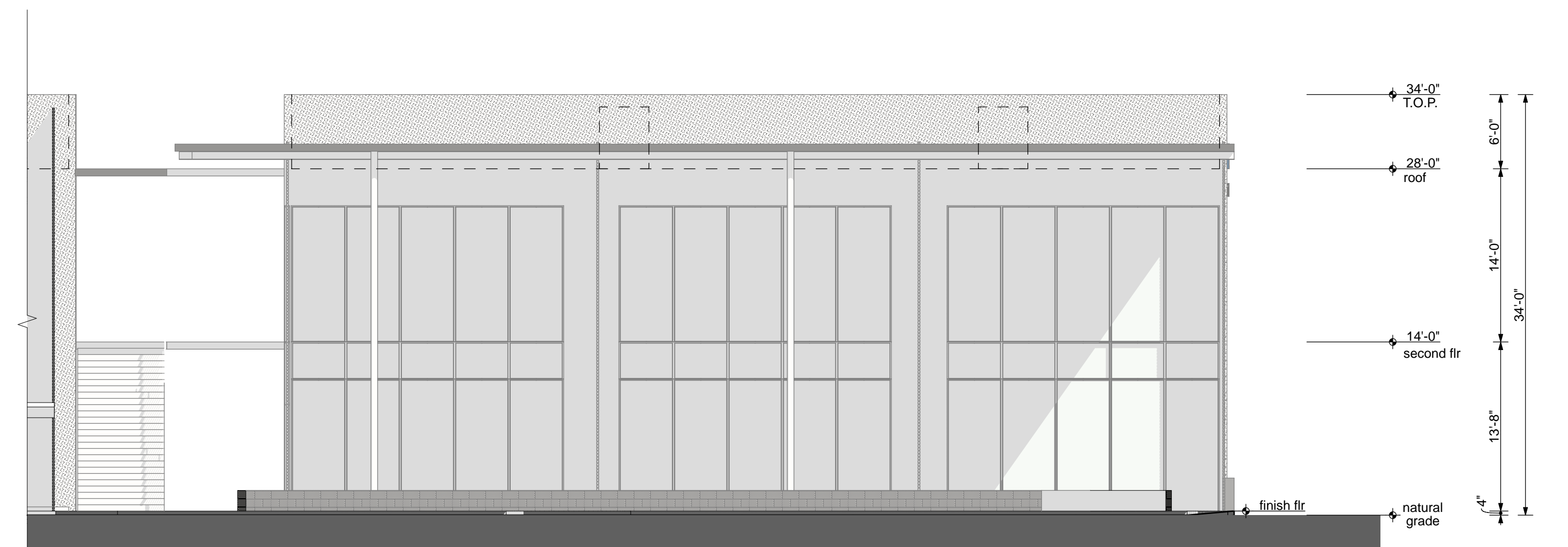


orcutt | winslow
 2929 n central ave
 eleventh floor
 phoenix arizona 85012
 602.257.1764 t
 602.257.9029 f
 www.owp.com

© 2017 this third copy or electronic drawing is an instrument of service and the property of the Orcutt|Winslow Partnership and shall remain their property. The design professional shall not be responsible for any alterations, modifications or additions made to this drawing by any party other than the design professional. Use of this drawing shall be limited to the original use for which it was prepared and publication thereof is expressly limited to such use, in whole or in part, without the written consent of the design professional. Any reproduction, in whole or in part, without the written consent of the design professional is prohibited. Publication by any method in whole or in part is prohibited without the written permission of the design professional. Any information obtained or conclusions derived from this drawing shall be at the user's sole risk.



1 BLDGS C,D,E NORTH ELEVATION



2 BLDGS C,D,E NORTH ELEVATION

mountain view medical center, LLC
Mountain View Medical Center Redevelopment
 10555, 10565, 10575, 10585, 10595, 10599 N. Tatum Blvd , Paradise Valley, Arizona 85253

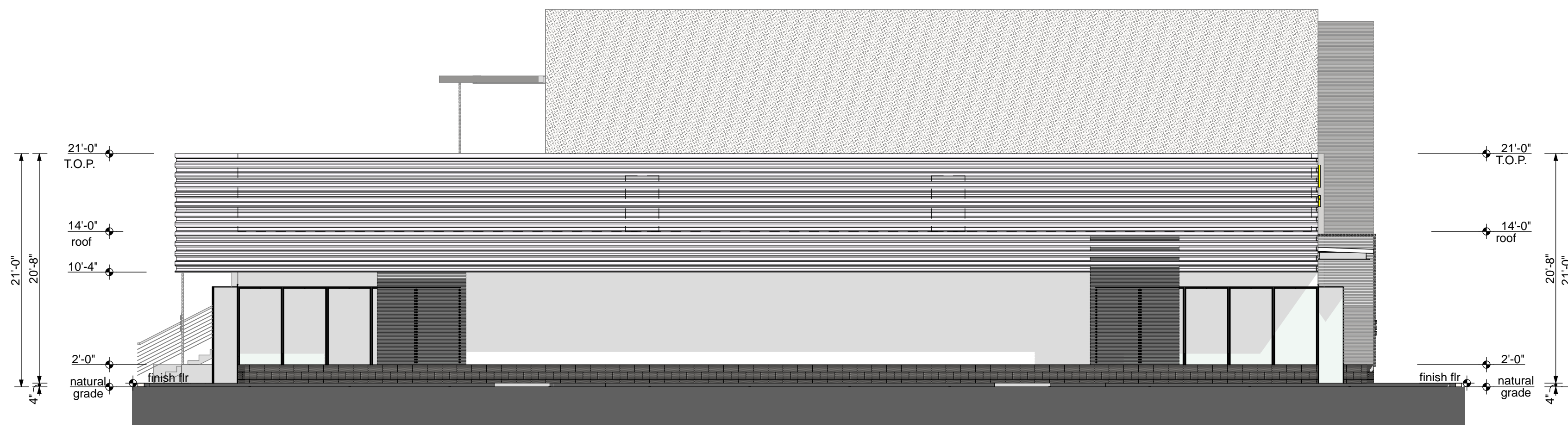
CLIENT CONTACT
 mountain view medical center, LLC 602.802.8106 t
 2944 N. 44th St. Phoenix, AZ 85018

PROJECT NO.	DATE OF ISSUE
2018_041	02.07.2019
REVISION NO.	DATE
1	09.26.2018
2	11.01.2018
3	01.22.2019
4	02.19.2019

PROJECT TEAM DRAWN BY
John Cantrell **BD**






PROJECT PHASE
SUP major amendment Review #4
SHEET CONTENTS
buildings C,D,E

SHEET NO.
05.4.6



1 BLDG E WEST ELEVATION
SCALE: 1/8" = 1'-0"


SECTION / ELEVATION LEGEND

		
EIFS TEXTURE SMOOTH	MESASTONE RUTHERFORD GREY	HONED BLOCK MASONRY
		
CONCRETE	TREX COMPOSITE DECKING	

2929 n central ave
eleventh floor
phoenix arizona 85012

602.257.1764 t
602.257.9029 f

www.owp.com



© 2017 this (hard copy or electronic) drawing is an instrument of service and the property of the Arcutt|Winslow Partnership and shall remain their property. The design professional shall not be responsible for any alterations, modifications or additions made to this drawing by any party other than the design professional. Use of this drawing shall be limited to the original use for which it was prepared and publication thereof is expressly limited to such use, in use or reproduction. Unless otherwise agreed in writing, design professional reserves all copyright or other proprietary interest in this drawing, and it may not be used for any other purpose without the design professional's written consent. Publication by any method in whole or part is prohibited without the written permission of the design professional. Any information obtained or conclusions derived from this drawing shall be at the user's sole risk.







BLDGS C & D ENTRY PLAZA



BLDGS B,C,D,E,F

mountain view medical center, LLC
Mountain View Medical Center Redevelopment
10555, 10565, 10575, 10585, 10595, 10599 N. Tatum Blvd , Paradise Valley, Arizona 85253

CLIENT CONTACT
mountain view medical center, LLC
2944 N. 44th St.
Phoenix, AZ 85018

PROJECT NO.	DATE OF ISSUE
2018_041	02.07.2019
REVISION NO.	DATE
	09.26.2018
	11.01.2018
	01.22.2019
	02.19.2019

PROJECT TEAM **DRAWN BY**
John Cantrell **BD**

PROJECT PHASE
SUP major amendment Review #4

SHEET CONTENTS
building E

SHEET NO.
05.4.7

SECTION / ELEVATION LEGEND



2929 n central ave
eleventh floor
phoenix arizona 85012

602.257.1764 t
602.257.9029 f

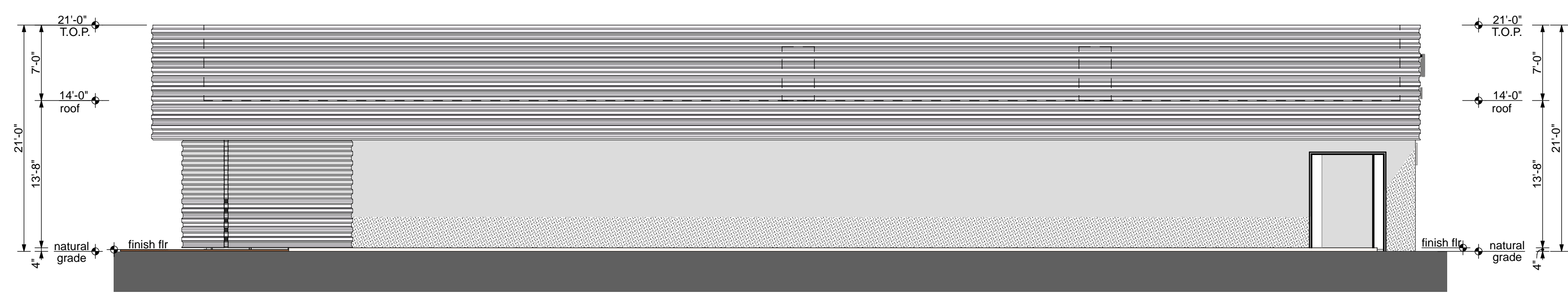
www.owp.com



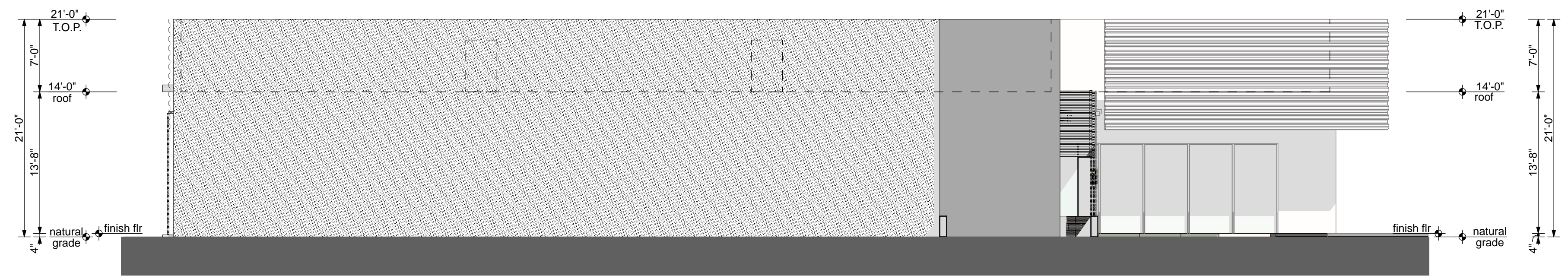
© 2017 this (hard copy or electronic) drawing is an instrument of service and the property of the Orcutt|Winslow Partnership and shall remain their property. The design professional shall not be responsible for any alterations, modifications or additions made to this drawing by any party other than the design professional. Use of this drawing shall be limited to the original use for which it was prepared and publication thereof is expressly limited to such use, in full or reproduction. Unless otherwise agreed in writing, the design professional reserves all copyright or other proprietary interest in this drawing, and it may not be used for any other purpose without the design professional's written consent. Publication by any method in whole or part is prohibited without the written permission of the design professional. Any information obtained or conclusions derived from this drawing shall be at the user's sole risk.



1 BLDG F NORTH ELEVATION



2 BLDG F EAST ELEVATION



3 BLDG F WEST ELEVATION

mountain view medical center, LLC
Mountain View Medical Center Redevelopment
10555,10565,10575,10585,10595,10599 N. Tatum Blvd , Paradise Valley, Arizona 85253

CLIENT CONTACT
mountain view medical center, LLC
2944 N. 44th St. Phoenix, AZ 85018

PROJECT NO.	DATE OF ISSUE
2018_041	02.07.2019
REVISION NO.	DATE
1	09.26.2018
2	11.01.2018
3	01.22.2019
4	02.19.2019

PROJECT TEAM DRAWN BY
John Cantrell **BD**

PROJECT PHASE
SUP major amendment Review #4
building F

SHEET NO.
05.4.8

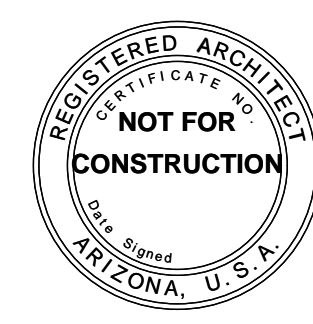
SECTION / ELEVATION LEGEND



2929 n central ave
eleventh floor
phoenix arizona 85012

602.257.1764 t
602.257.9029 f

www.owp.com



© 2017 this (hard copy or electronic) drawing is an instrument of service and the property of the Arcutt|Winslow Partnership and shall remain their property. The design professional shall not be responsible for any alterations, modifications or additions made to this drawing by any party other than the design professional. Use of this drawing shall be limited to the original use for which it was prepared and publication thereof is expressly limited to such use, in whole or in part, without the written consent of the design professional. The design professional reserves all copyright or other proprietary interest in this drawing, and it may not be used for any other purpose without the design professional's written consent. Publication by any method in whole or in part is prohibited without the written permission of the design professional. Any information obtained or conclusions derived from this drawing shall be at the user's sole risk.



1 BLDG F SOUTH ELEVATION



VIEW OF BUILDING F

mountain view medical center, LLC
Mountain View Medical Center Redevelopment
 10555, 10565, 10575, 10585, 10595, 10599 N. Tatum Blvd., Paradise Valley, Arizona 85253

CLIENT CONTACT
 mountain view medical center, LLC
 2944 N. 44th St.
 Phoenix, AZ 85018

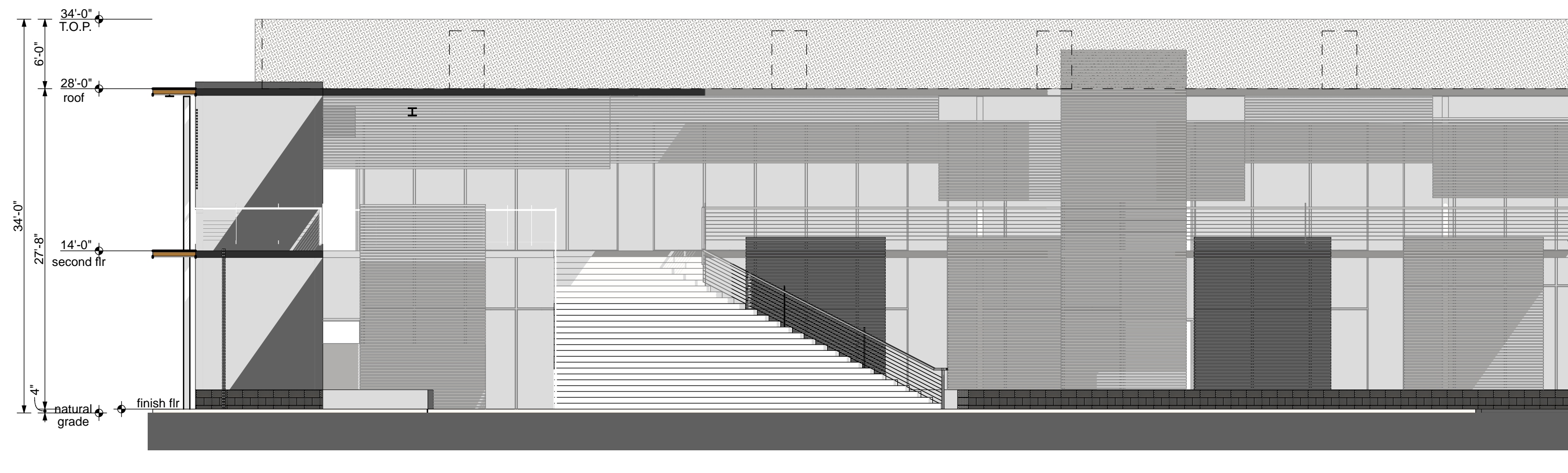
PROJECT NO.	DATE OF ISSUE
2018_041	02.07.2019
REVISION NO.	DATE
1	09.26.2018
2	11.01.2018
3	01.22.2019
4	02.19.2019

PROJECT TEAM DRAWN BY
 John Cantrell BD

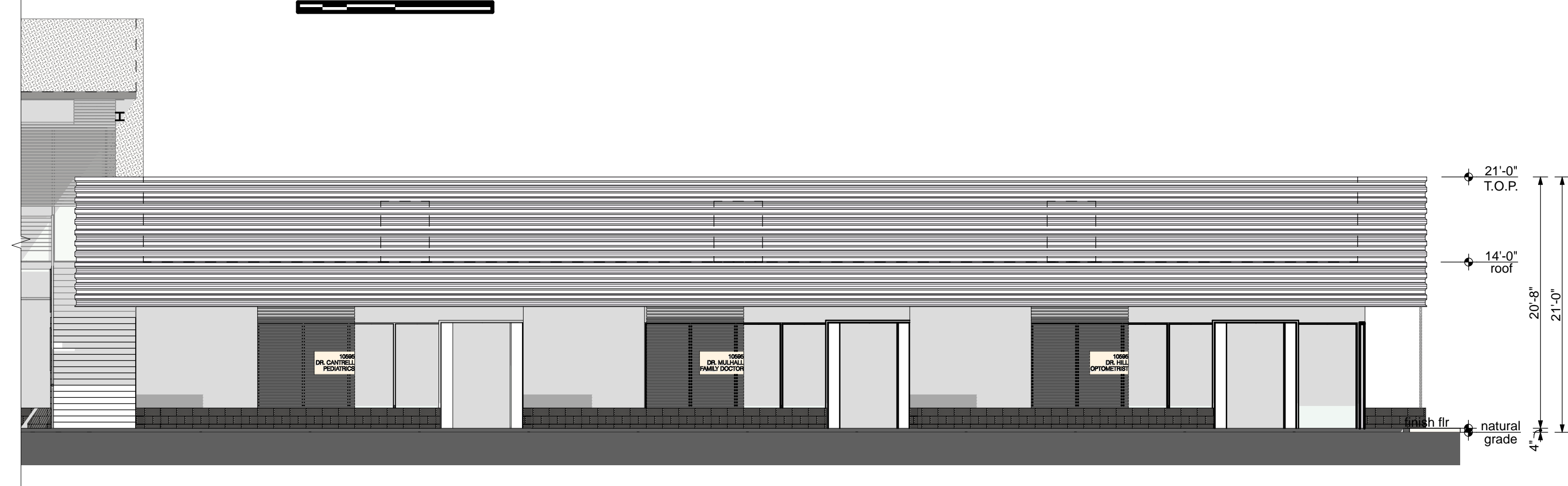
PROJECT PHASE
 SUP major amendment
 Review #4

SHEET CONTENTS
 building F

SHEET NO.
 05.4.9



2 BLDGS D & E SOUTH ELEVATION



3 BLDGS D & E SOUTH ELEVATION



1 BLDG A EAST ELEVATION



BLDGS B,C,D,E ENTRIES
SCALE: 1:2.66

SECTION / ELEVATION LEGEND



orcutt | winslow
 2929 n central ave
 eleventh floor
 phoenix arizona 85012
 602.257.1764 t
 602.257.9029 f
 www.owp.com

© 2017 this (hard copy or electronic) drawing is an instrument of service and the property of the Orcutt|Winslow Partnership and shall remain their property. The design professional shall not be responsible for any alterations, modifications or additions made to this drawing by any party other than the design professional. Use of this drawing shall be limited to the original use for which it was prepared and publication thereof is expressly limited to such use, in use or reproduction. Unless otherwise agreed in writing, the design professional reserves all copyright or other proprietary interest in this drawing, and it may not be used for any other purpose without the design professional's written consent. Publication by any method in whole or part is prohibited without the written permission of the design professional. Any information obtained or conclusions derived from this drawing shall be at the user's sole risk.

mountain view medical center, LLC
Mountain View Medical Center Redevelopment
 10555, 10565, 10575, 10585, 10595, 10599 N. Tatum Blvd., Paradise Valley, Arizona 85253

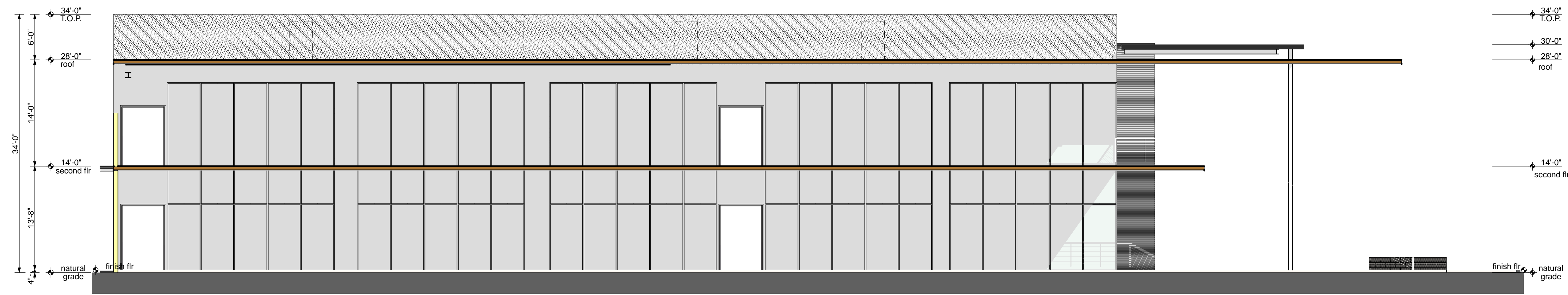
CLIENT CONTACT
 mountain view medical center, LLC 602.802.8106 t
 2944 N. 44th St. Phoenix, AZ 85018

PROJECT NO.	DATE OF ISSUE
2018_041	02.07.2019
REVISION NO.	DATE
1	09.26.2018
2	11.01.2018
3	01.22.2019
4	02.19.2019






PROJECT TEAM DRAWN BY
 John Cantrell BD

PROJECT PHASE
 SUP major amendment Review #4
SHEET CONTENTS
 building entries

SHEET NO.
 05.4.10



SECTION / ELEVATION LEGEND

		
EIFS TEXTURE SMOOTH	MESASTONE RUTHERFORD GREY	HONED BLOCK MASONRY
		
CONCRETE	TREX COMPOSITE DECKING	

1 BLDG C EAST ELEVATION




2 BLDGS B & C EAST ELEVATION



TATUM BLVD ENRTY LOOKING EAST

orcutt | winslow
 2929 n central ave
 eleventh floor
 phoenix arizona 85012
 602.257.1764 t
 602.257.9029 f
 www.owp.com



© 2017 this (hard copy or electronic) drawing is an instrument of service and the property of the Orcutt|Winslow Partnership and shall remain their property. The design professional shall not be responsible for any alterations, modifications or additions made to this drawing by any party other than the design professional. Use of this drawing shall be limited to the original use for which it was prepared and publication thereof is expressly limited to such use, in use or reproduction. Unless otherwise agreed in writing, design professional reserves all copyright or other proprietary interest in this drawing, and it may not be used for any other purpose without the design professional's written consent. Publication by any method in whole or part is prohibited without the written permission of the design professional. Any information obtained or conclusions derived from this drawing shall be at the user's sole risk.

mountain view medical center, LLC
Mountain View Medical Center Redevelopment
 10555, 10565, 10575, 10585, 10595, 10599 N. Tatum Blvd , Paradise Valley, Arizona 85253

CLIENT CONTACT
 mountain view medical center, LLC 602.802.8106 t
 2944 N. 44th St.
 Phoenix, AZ 85018

PROJECT NO.	DATE OF ISSUE
2018_041	02.07.2019
REVISION NO.	DATE
1	09.26.2018
2	11.01.2018
3	01.22.2019
4	02.19.2019

PROJECT TEAM **DRAWN BY**
 John Cantrell BD

PROJECT PHASE
 SUP major amendment
 Review #4
SHEET CONTENTS
 building entries

SHEET NO.
 05.4.11