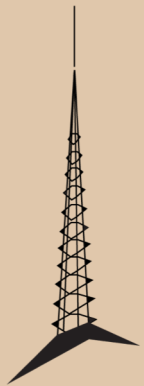


Town of Paradise Valley Spire Project Update & Site Enhancement Concept

April 23, 2026



SAVE

THE

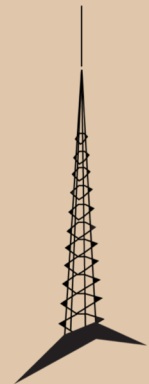
SPIRE





Purpose

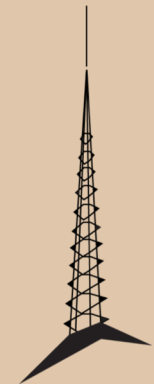
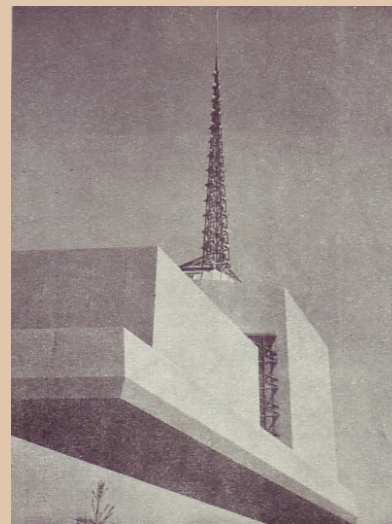
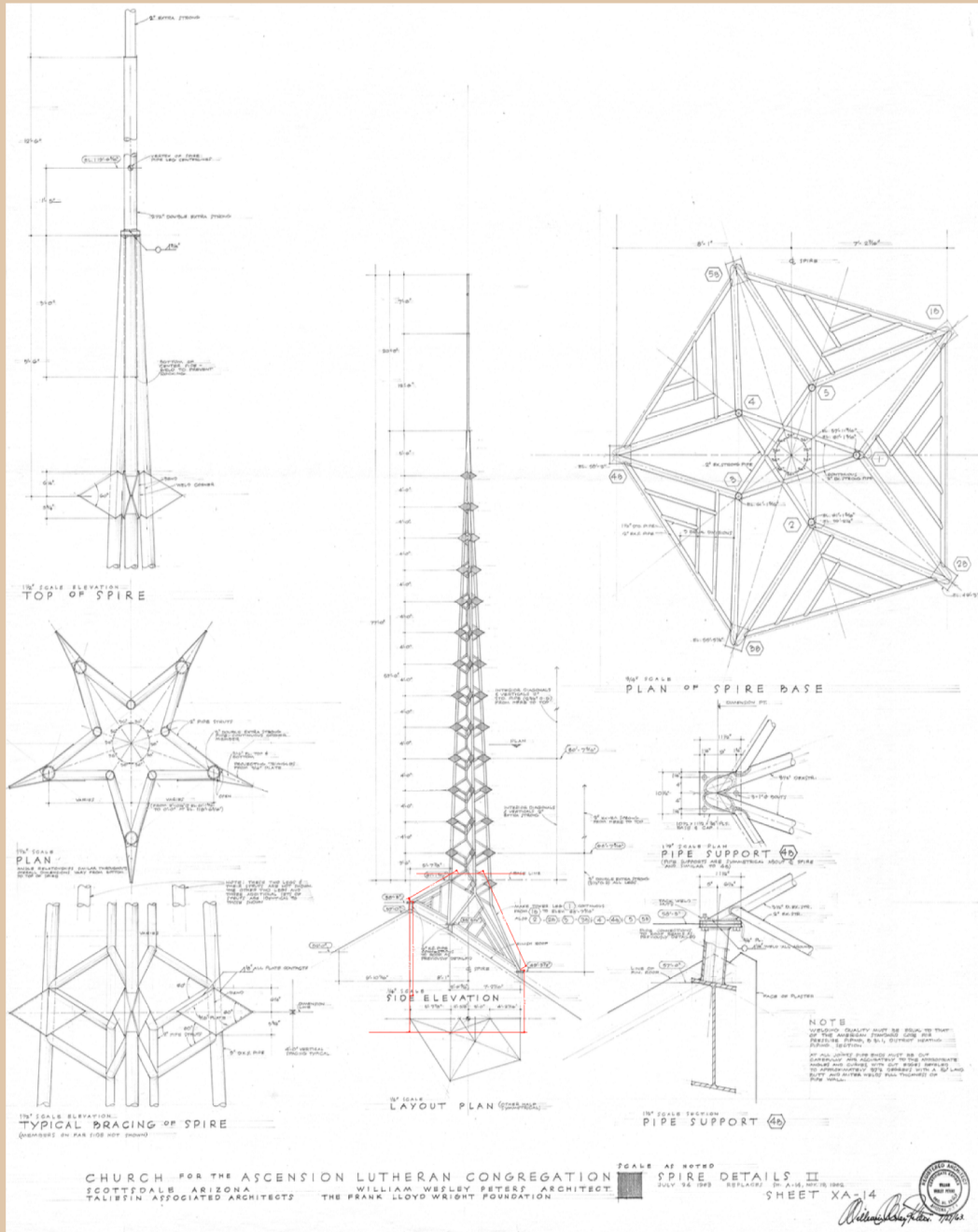
- Share current installation concept
- Review site and design direction
- Confirm alignment on next steps



SAVE
THE
SPIRE

Project Context

- Architecturally significant spire (Taliesin Associated Architects, 1961-63)
- Accepted by Town as a civic gift
- Direction established to identify placement and pursue installation



SAVE
THE
SPIRE



Current Focus

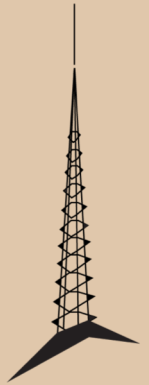
Where We Are Now

- Installation concept refined
- Placement options evaluated
- Site integration advanced



Site Overview

Campus Plan with Proposed Placement



SAVE
THE
SPIRE



1



2



3



Site Strategy

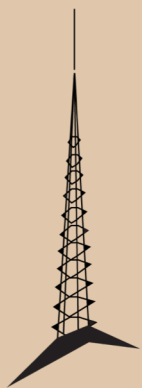
Why this Location?

- Central to the Town campus
- Strong visibility and civic presence
- Balanced integration within existing context



Design Concept

Concept Rendering
(Illustrative)



SAVE

THE

SPIRE

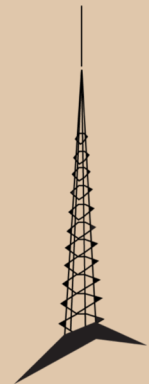




The Spire Element

Civic Landmark

- Vertical focal point
- Identity feature
- Anchors civic space



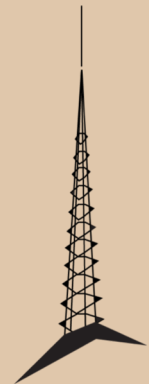
SAVE
THE
SPIRE



Ground Experience

Human Scale

- Accessible and open
- Pedestrian-friendly circulation
- Integrated with movement paths



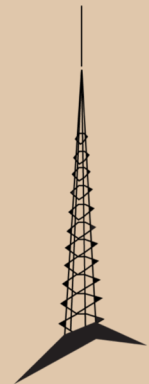
SAVE
THE
SPIRE



Public Benefit

Enhanced Civic Use

- Gathering space
- Informal public use
- Supports daily activity



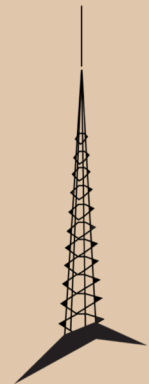
SAVE
THE
SPIRE



Community Use

Flexible Activation

- Civic events
- Public gatherings
- Existing programming support

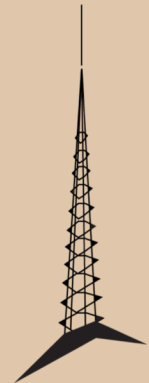


SAVE
THE
SPIRE

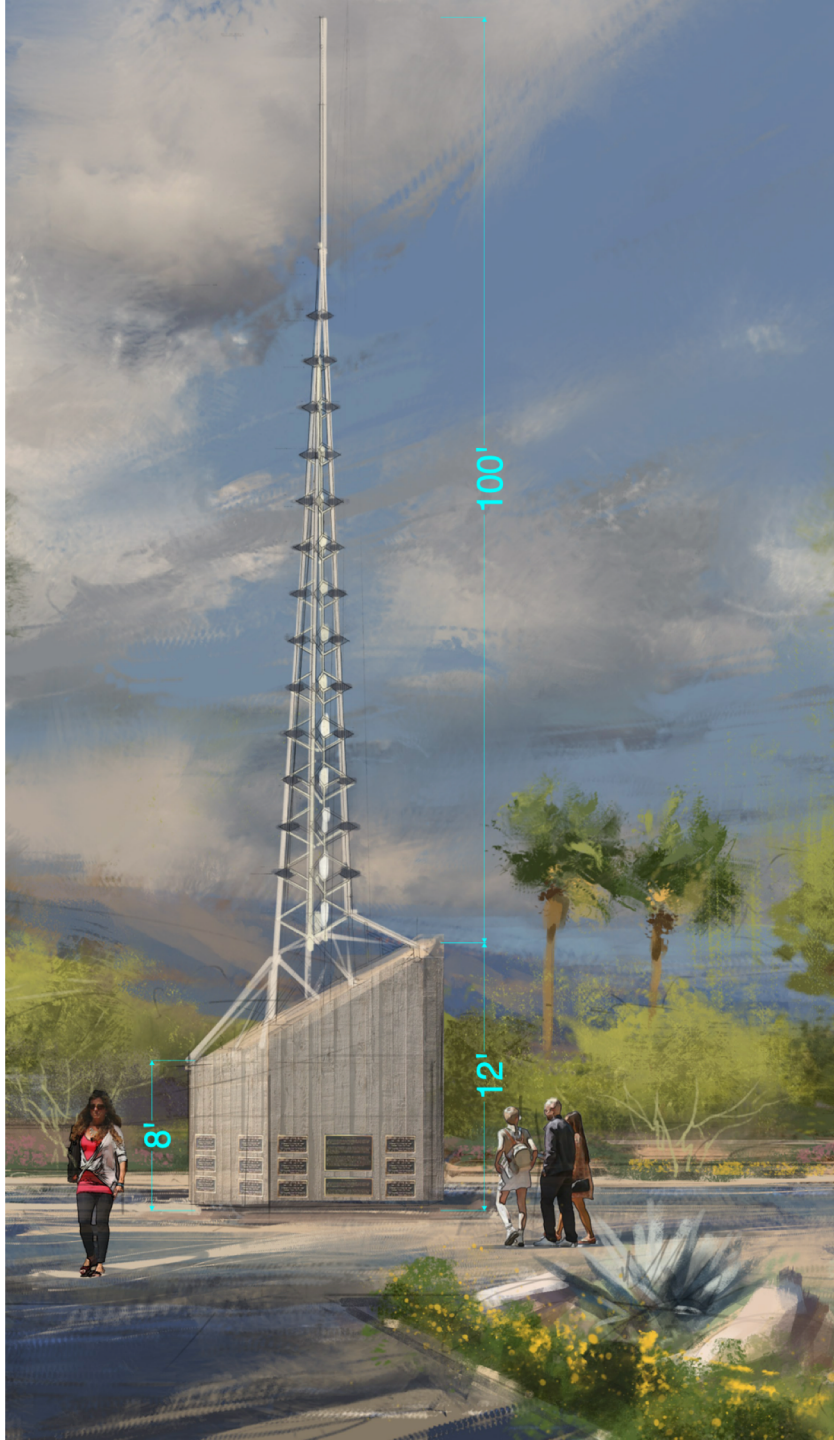


Integration with Campus

- Consistent material language
- Aligns with existing site features
- Complements memorial elements



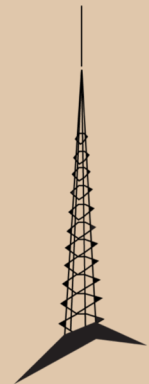
SAVE
THE
SPIRE



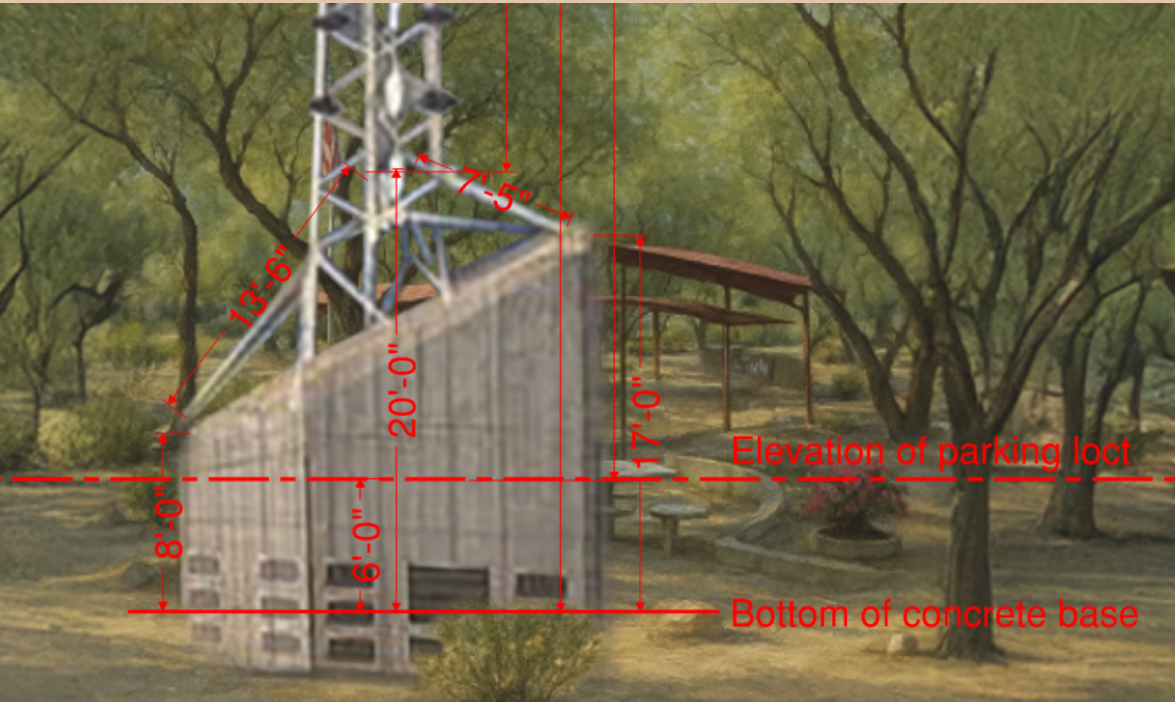
Design Considerations

Key Considerations

- Spire height ~92 ft (~100 ft overall)
- Set within a slightly recessed placement
- Base designed for safety and durability



SAVE
THE
SPIRE



Design Considerations

Key Considerations

- Spire height ~92 ft (~100 ft overall)
- Set within a slightly recessed placement
- Base designed for safety and durability





Project Approach

- Estimated range ~500k+
- Community contribution opportunities
- Refinement continues with funding and final design





Next Steps

- Confirm direction
- Move into implementation planning



The Save The Spire Citizen Group

Members:

Christine Labelle

Catherine Kauffman

Scott Jarson

Doug Jordan

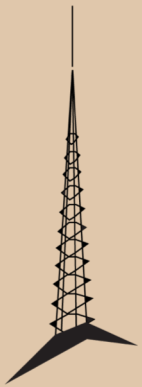
John Anderson

Erik Peterson

Rod Cullum

Jordan Rose

Colleen Steinberg



SAVE

THE

SPIRE

Thank You!

We appreciate
your time

Feedback and
questions?

