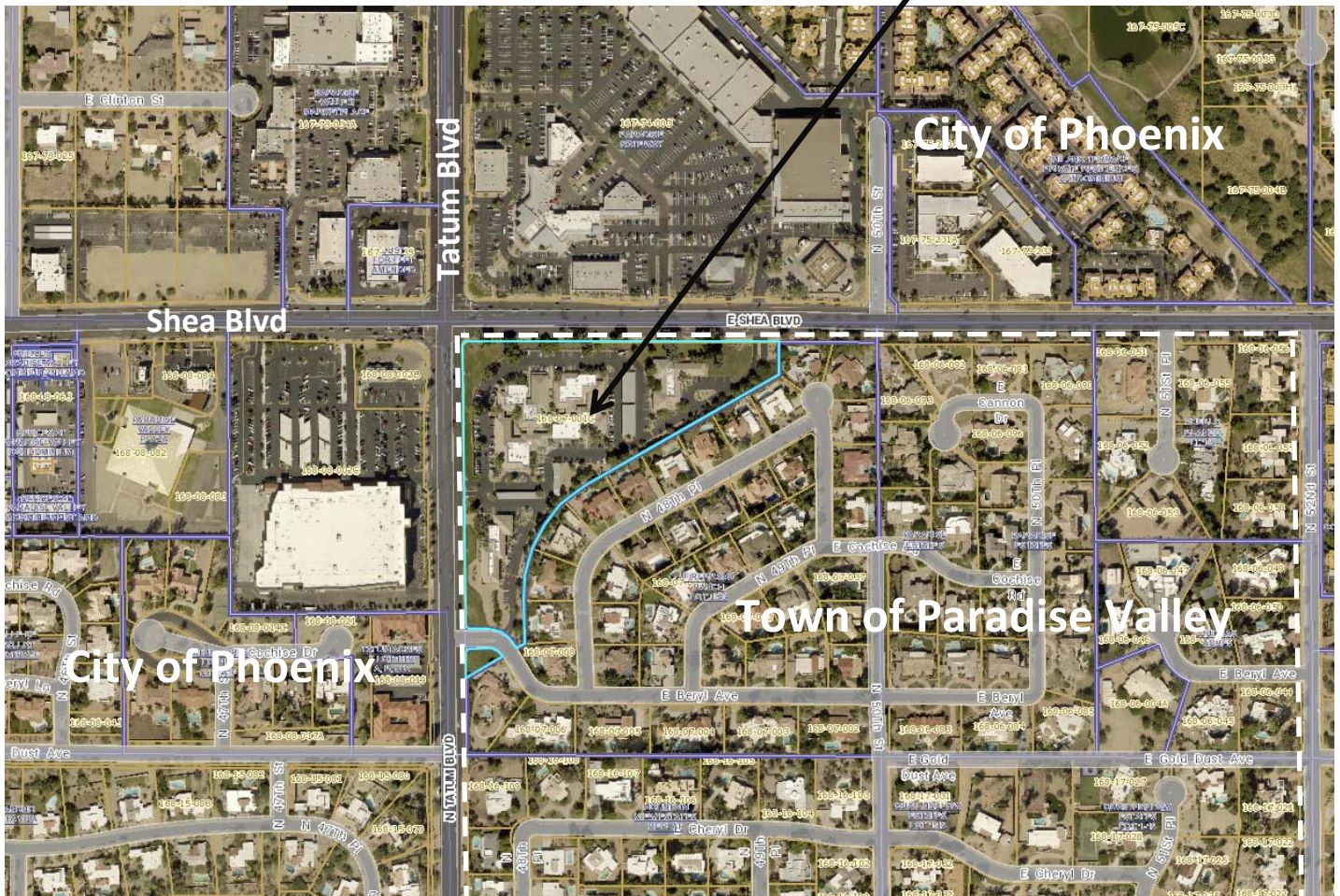




VICINITY MAP

Subject Property



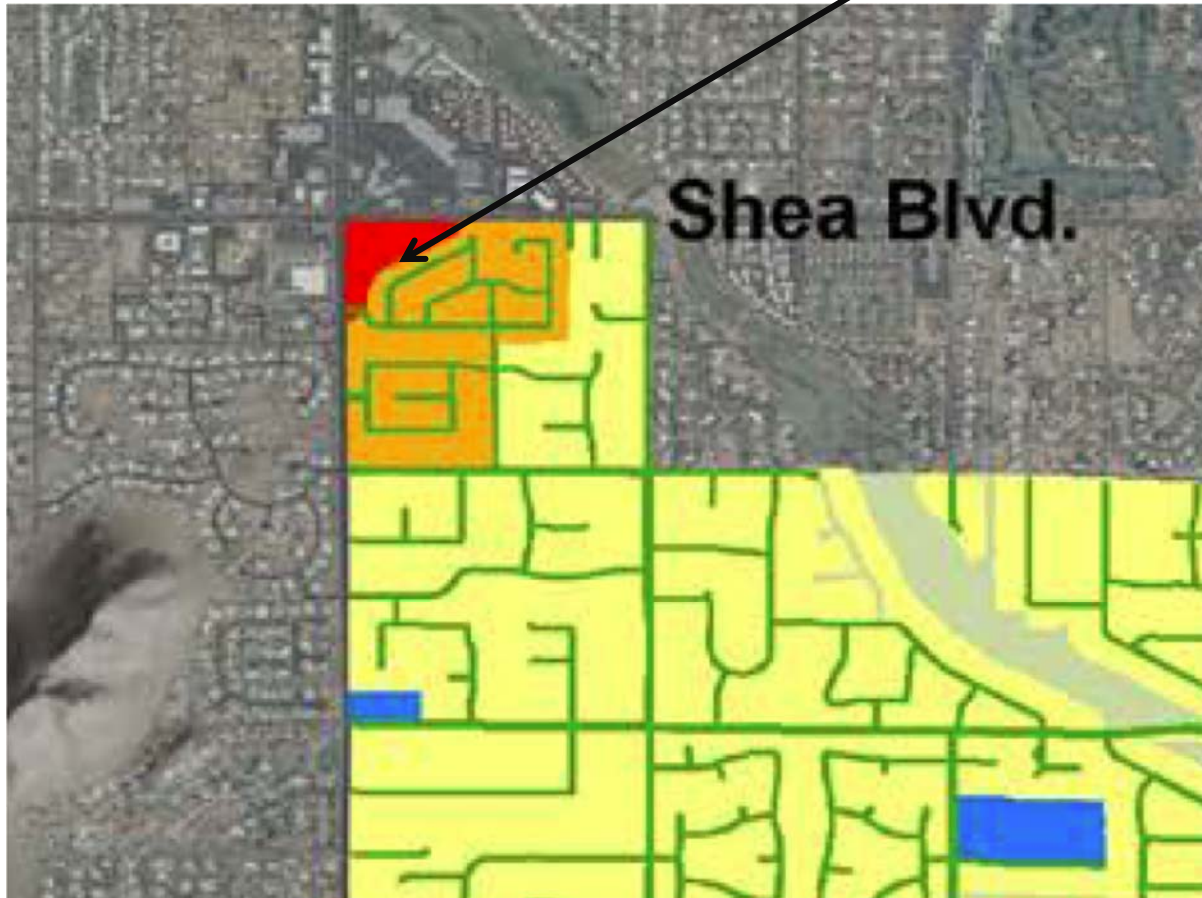
Mountain View Medical Center SUP

10555 N Tatum Boulevard



GENERAL PLAN

Subject Property



Legend

- | | |
|--|---------------------|
| Low Density Residential OR Resort/Country Club | Private Open Space |
| Private Open Space OR Resort/Country Club | Public Open Space |
| Very Low Density Residential | Medical Office |
| Low Density Residential | Public/Quasi Public |
| Medium Density Residential | Resort/Country Club |

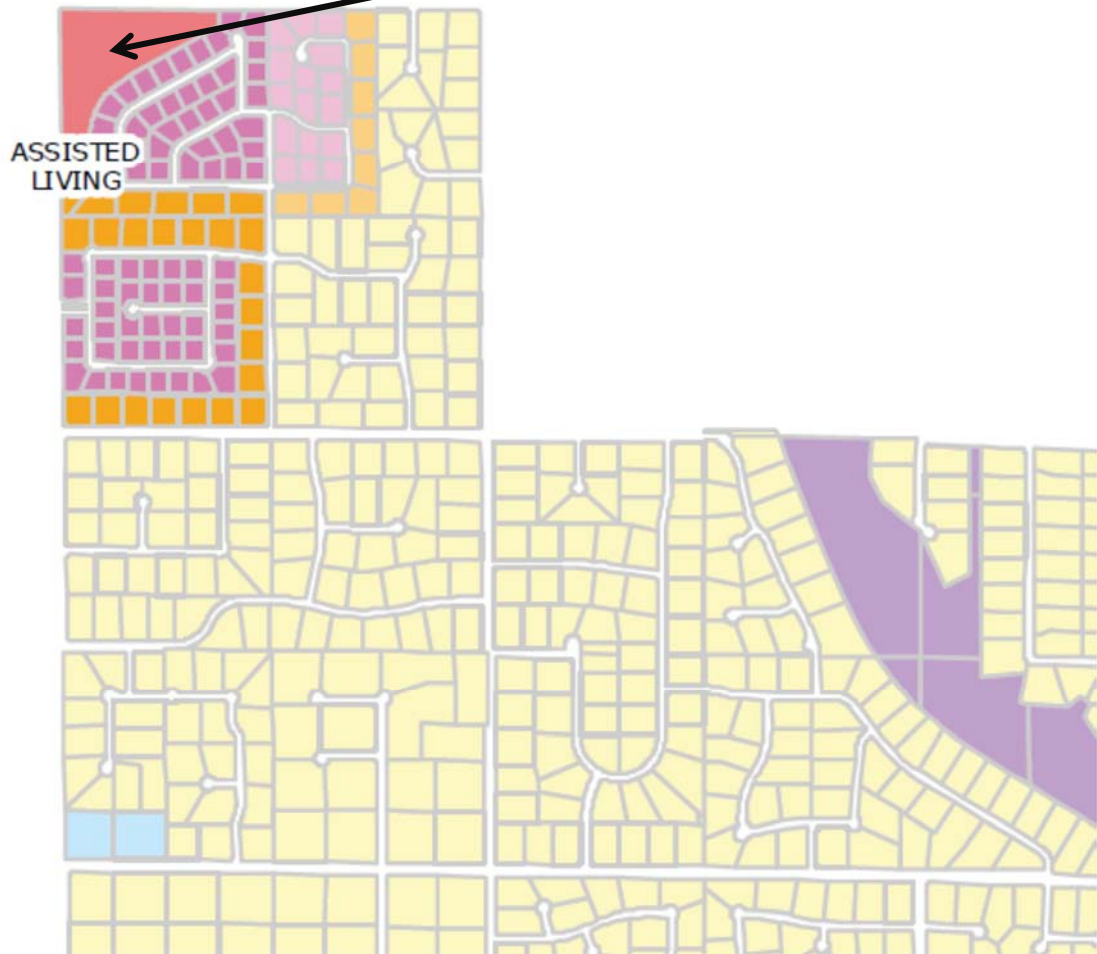
Mountain View Medical Center SUP

10555 N Tatum Boulevard



ZONING

Subject Property



**Legend
Zoning**

- | | | | |
|--------|--------|-------|-----------------------------------|
| R-175 | R-35 | R-18 | R-18CP |
| R-43 | R-35CP | R-18A | SUP-P Special Use Permit- Public |
| R-43CP | R-35A | R-10 | OSP- Open Space Preserve |
| | | | SUP-R Special Use Permit- Resort |
| | | | SUP-O Special Use Permit- Medical |
| | | | Hillside |



City of Phoenix

City of Scottsdale

N 64
N Scottsdale 1

Mountain View Medical Center SUP

10555 N Tatum Boulevard