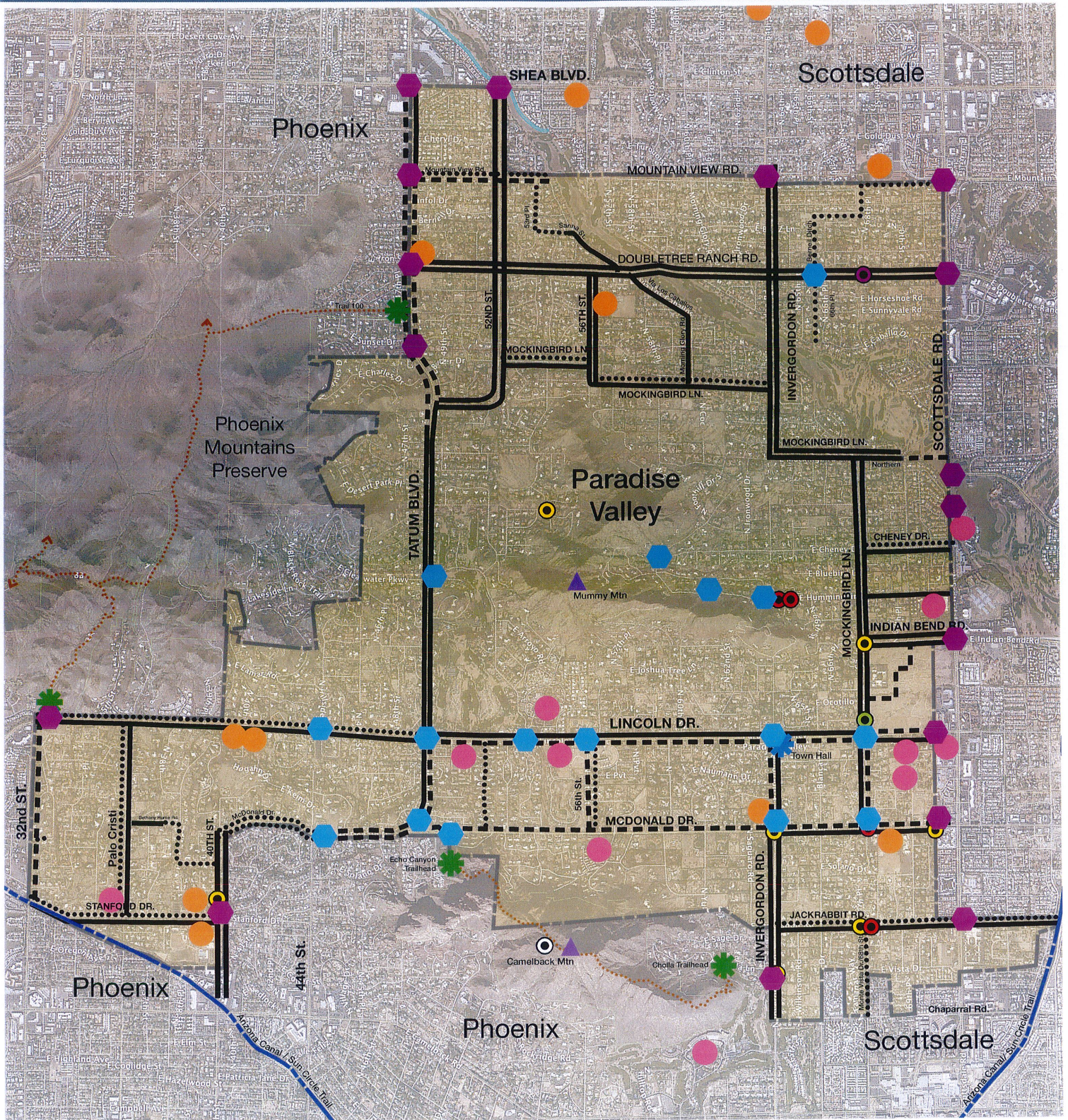
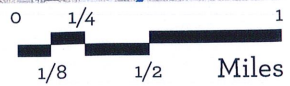


# Pedestrian Facilities Proposed Routes and CIP Map



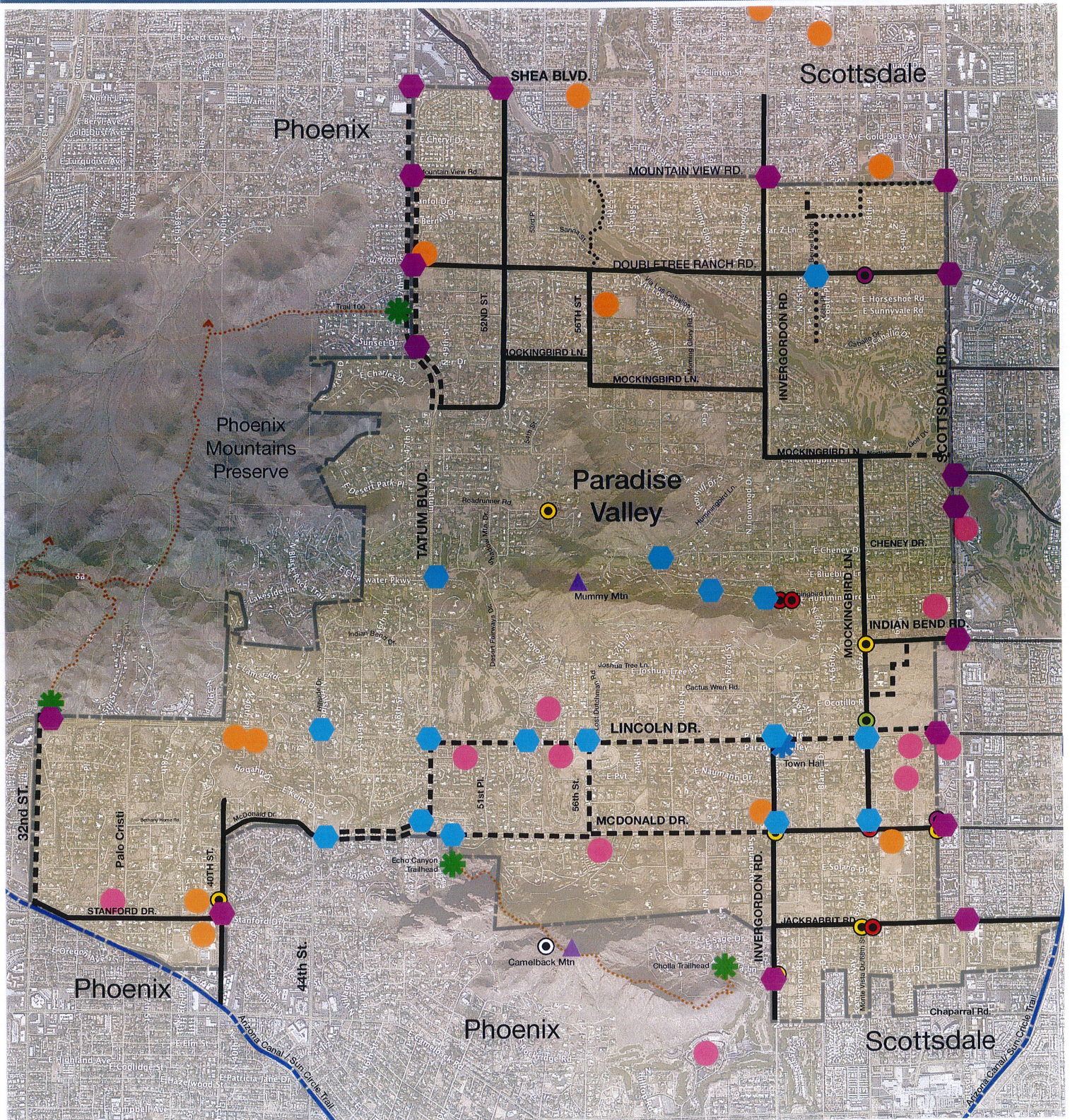
**Legend:**

- Trail
  - Sidewalk
  - Rec. Path
  - Town Hall
  - School
  - Resort
  - Trailhead
  - Mountain Peak
  - Enhanced Intersections in P.V.
  - Enhanced Intersections in Coordination
  - Trail
  - Canal
- ADOT 2015 Crash Data:**
- No Injury
  - Possible Injury
  - Non-Incapacitating Injury
  - Incapacitating Injury
  - Death



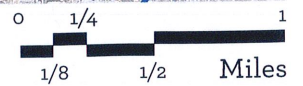
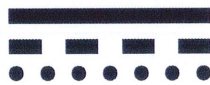


# Bicycle Facilities Proposed CIP Map



**Legend:**

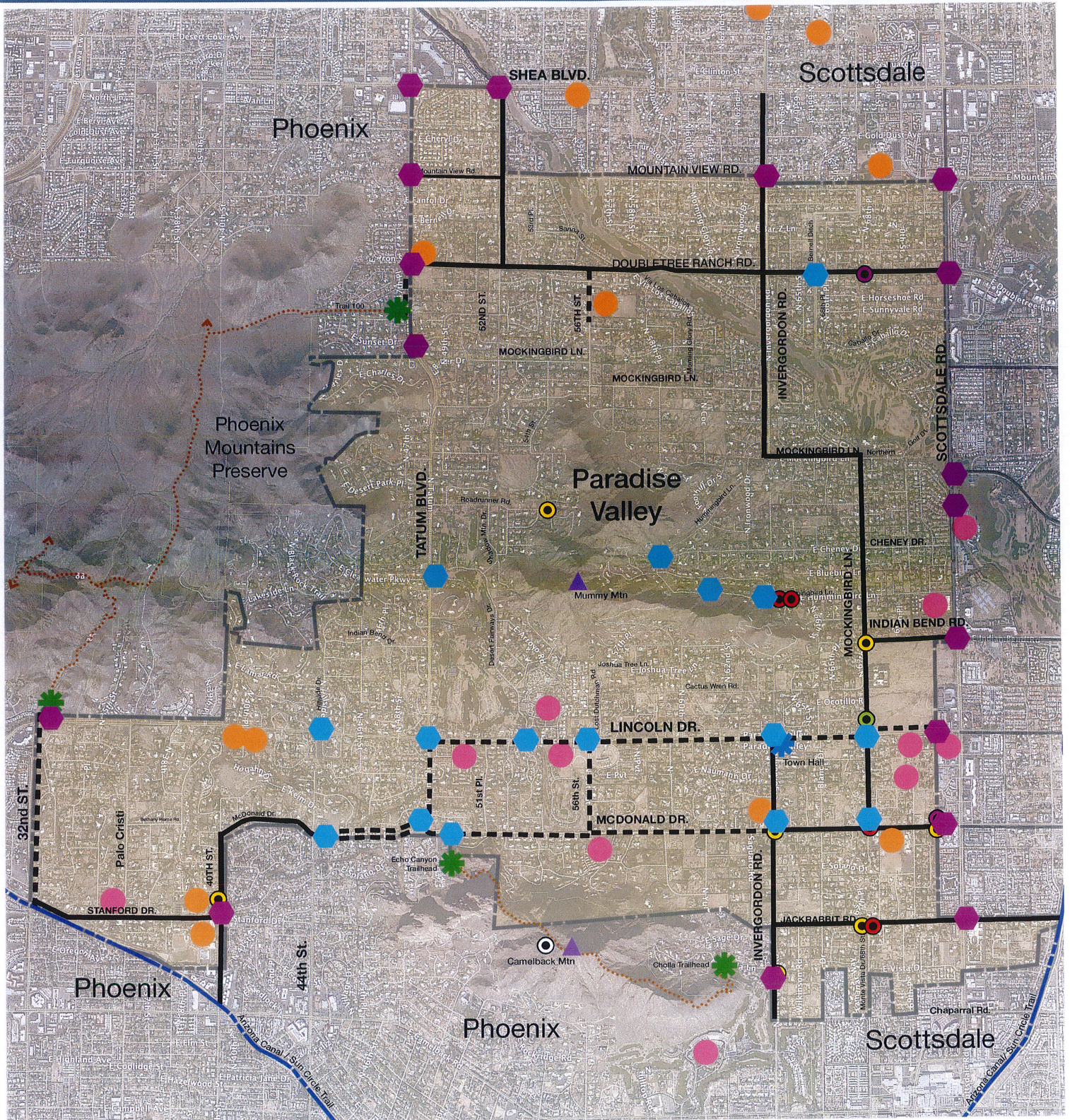
- Bike Lanes
- Rec. Paths
- Bike Trail



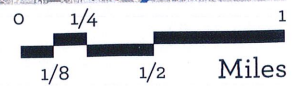
- |           |  |           |  |                                |  |  |  |       |  |
|-----------|--|-----------|--|--------------------------------|--|--|--|-------|--|
| Town Hall |  | Resort    |  | Mountain Peak                  |  | Enhanced Intersections w/ Outside Coordination |  | Trail |  |
| School    |  | Trailhead |  | Enhanced Intersections in P.V. |  |  |  | Canal |  |
- ADOT 2015 Crash Data:
- |                 |  |                         |  |       |  |
|-----------------|--|-------------------------|--|-------|--|
| No Injury       |  | Non-Incapitating Injury |  | Death |  |
| Possible Injury |  | Incapitating Injury     |  |       |  |



# Draft #2 08/29/2017 Bicycle Facilities Route Map



**Legend:**  
Bike Lanes  
Rec. Paths



- |           |  |           |  |                              |  |  |  |       |  |
|-----------|--|-----------|--|------------------------------|--|--|--|-------|--|
| Town Hall |  | Resort    |  | Mountain Peak                |  | Enhanced Intersections w/ Outside Coordination |  | Trail |  |
| School    |  | Trailhead |  | Enhanced Intersections in PV |  | Canal  |  |       |  |
- ADOT 2015 Crash Data:
- |                 |  |                         |  |       |  |
|-----------------|--|-------------------------|--|-------|--|
| No Injury       |  | Non-Incapitating Injury |  | Death |  |
| Possible Injury |  | Incapitating Injury     |  |       |  |