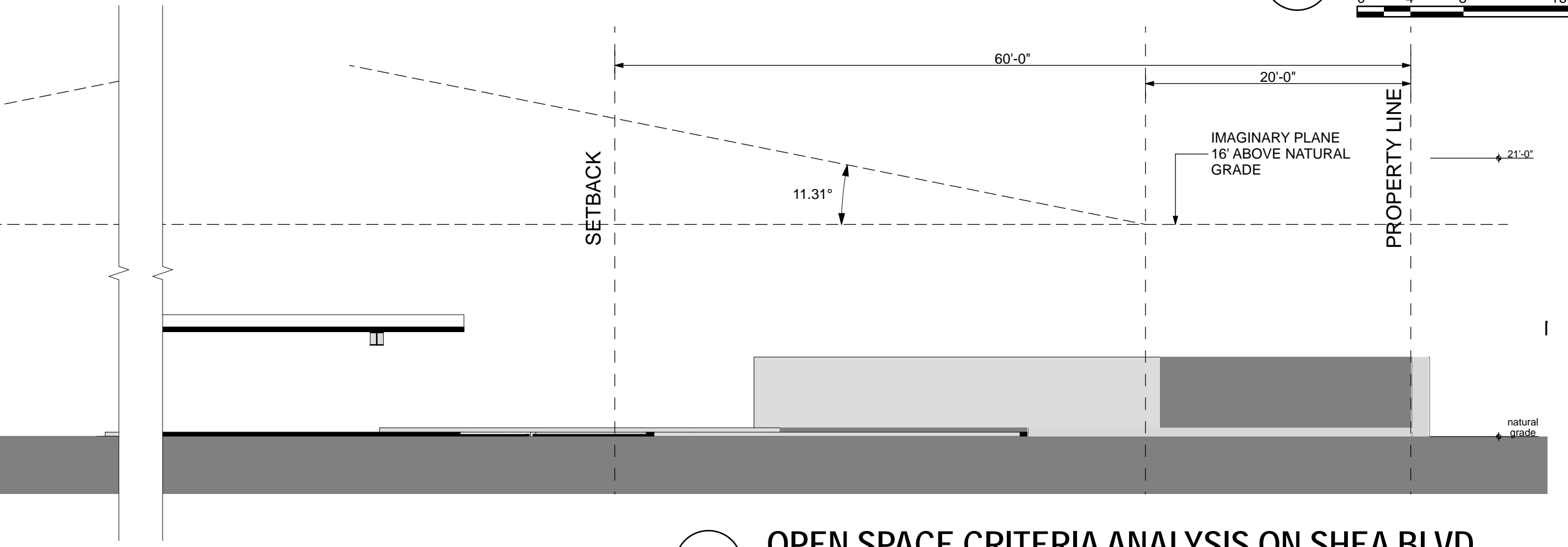
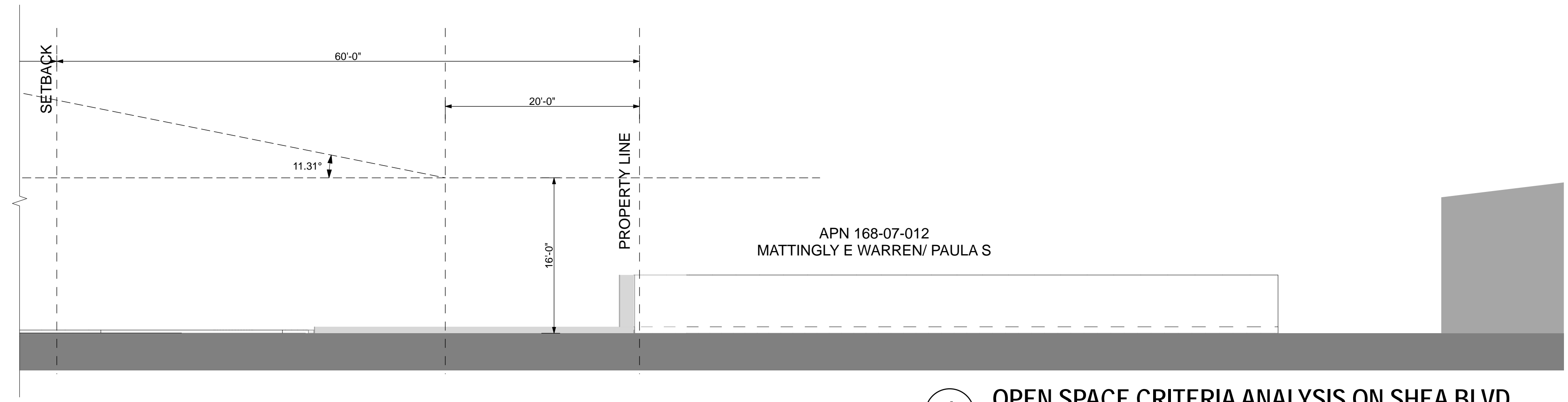
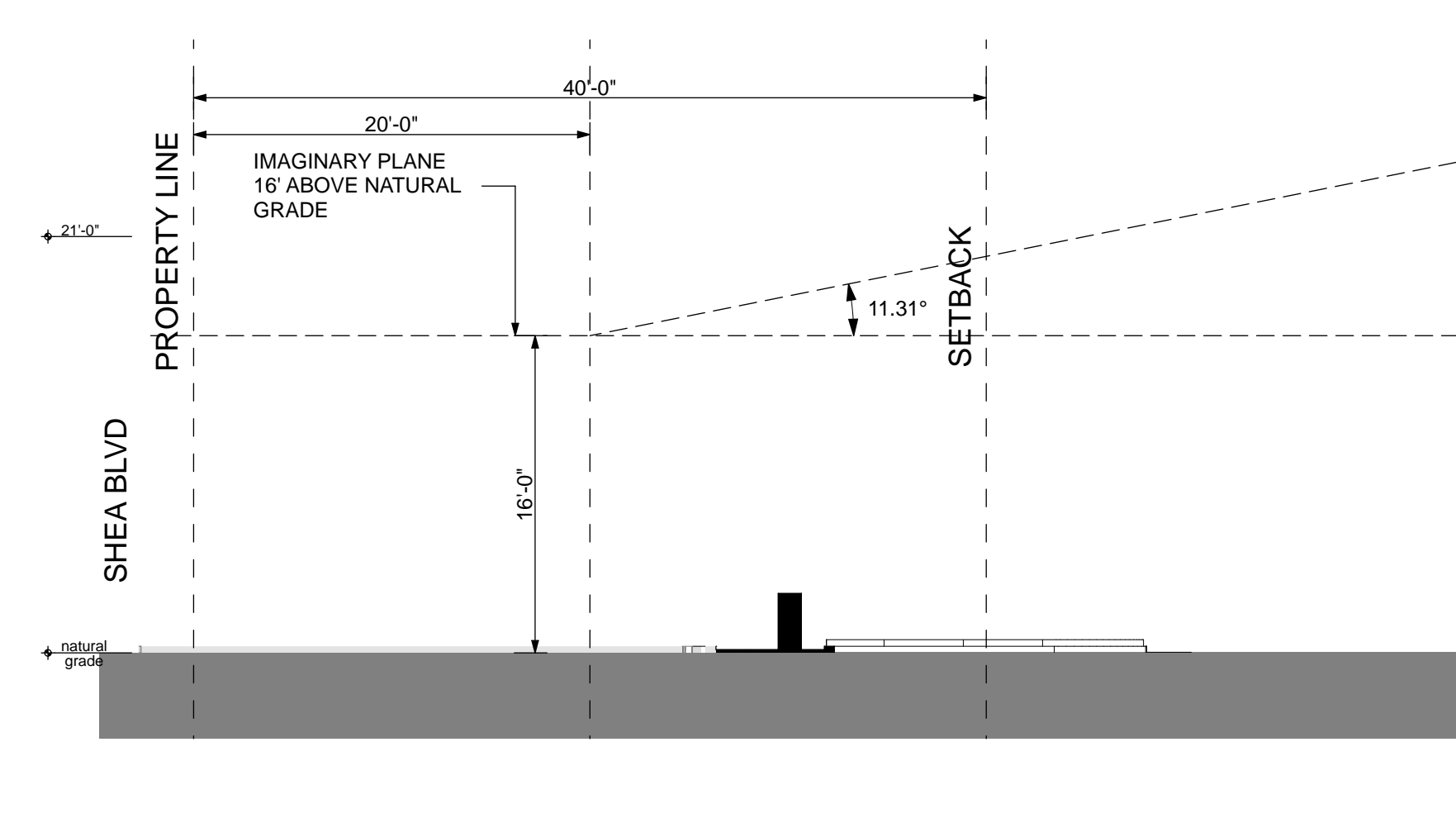
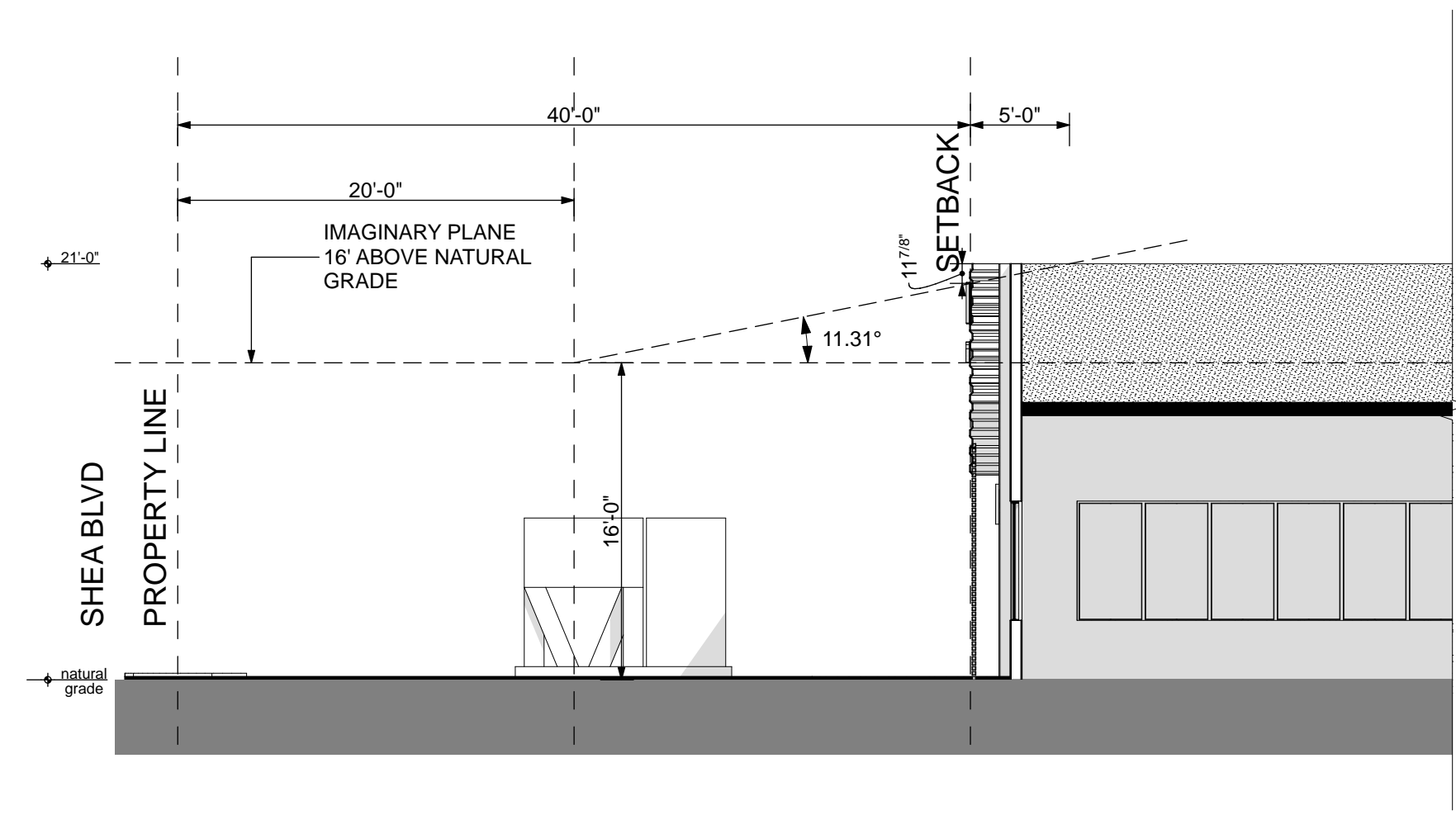


Orcutt|Winslow Project 2018_041 Mountain View Medical Center Redevelopment, Sections and Open Space Criteria Sheet 05.5.1 sections & open space criteria analysis was plotted by Bhoomi Desai on Monday, February 11, 2019 at 4:47 PM; file found at BIM Server: \\C Bimserver - BIMcloud Basic for ARCHICAD 21\Health Care Studio\18_041-01\Min\view\MedicalCTRRedev\pmt

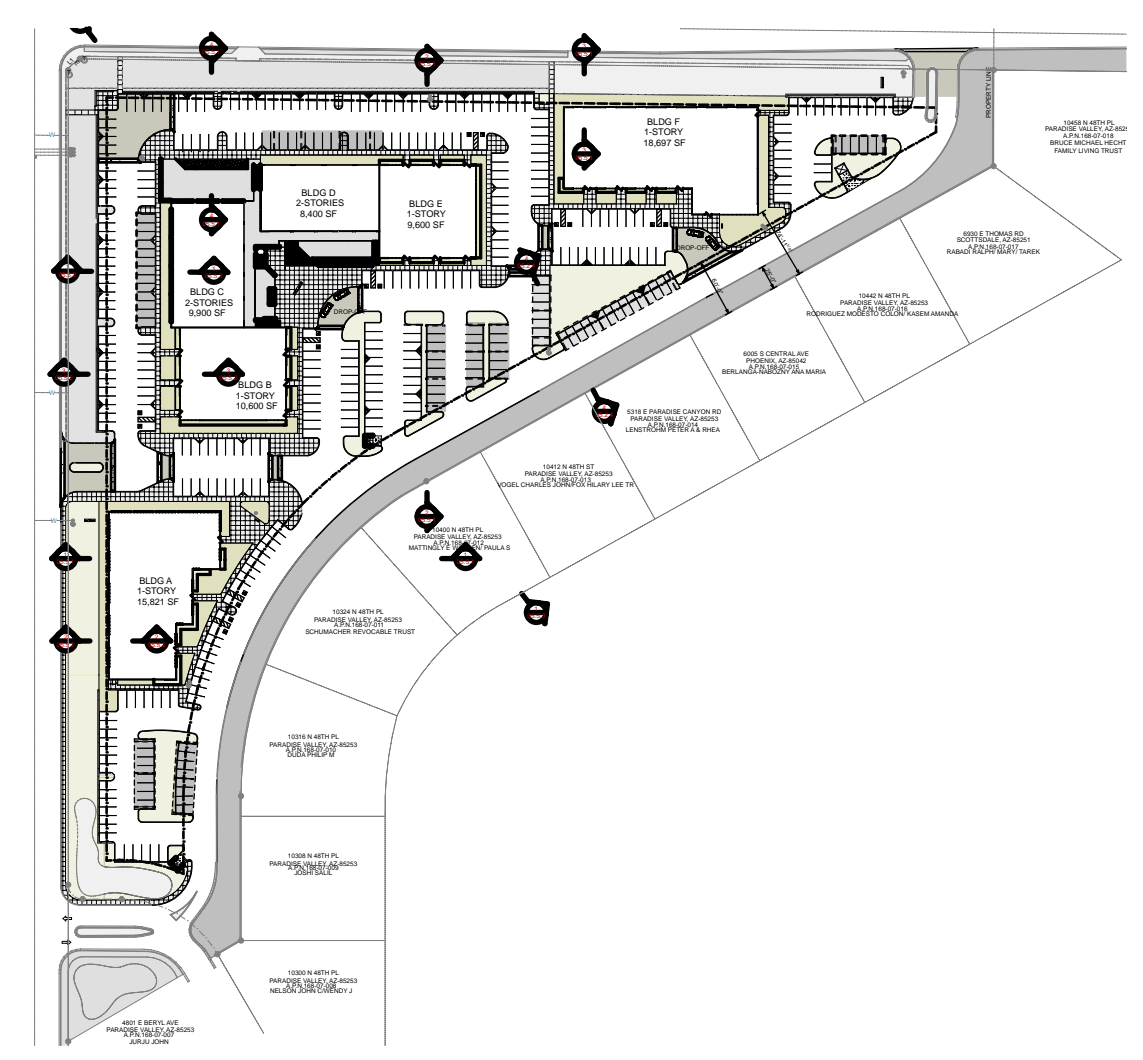
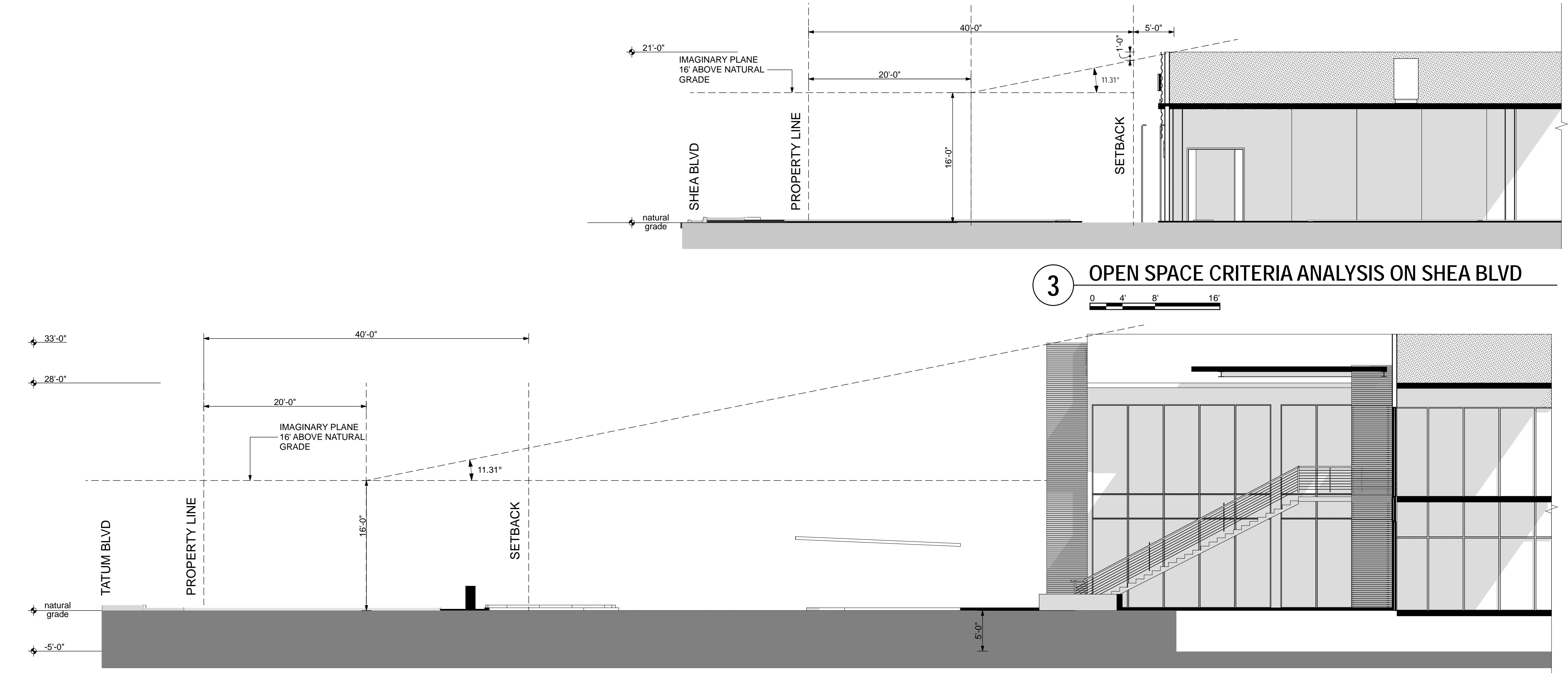


1 OPEN SPACE CRITERIA ANALYSIS ON SHEA BLVD

2 OPEN SPACE CRITERIA ANALYSIS ON SHEA BLVD

3 OPEN SPACE CRITERIA ANALYSIS ON SHEA BLVD

4 OPEN SPACE CRITERIA ANALYSIS ON TATUM BLVD



KEY PLAN NORTH

orcutt | winslow
 2929 n central ave
 eleventh floor
 phoenix arizona 85012
 602.257.1764 t
 602.257.9029 f
 www.owp.com

© 2017 this (hard copy or electronic) drawing is an instrument of service and the property of the Orcutt|Winslow Partnership and shall remain their property. The design professional shall not be responsible for any alterations, modifications or additions made to this drawing by any party other than the design professional. Use of this drawing shall be limited to the original use for which it was prepared and publication thereof is expressly limited to such use, in use or reproduction. Unless otherwise agreed in writing, design professional reserves all copyright or other proprietary interest in this drawing, and it may not be re-used for any other purpose without the design professional's written consent. Publication by any method in whole or part is prohibited without the written permission of the design professional. Any information obtained or conclusions derived from this drawing shall be at the user's sole risk.

mountain view medical center, LLC
Mountain View Medical Center Redevelopment
 10555, 10565, 10575, 10585, 10595, 10599 N. Tatum Blvd., Paradise Valley, Arizona 85253

CLIENT CONTACT
 mountain view medical center, LLC
 2944 N. 44th St.
 Phoenix, AZ 85018
 602.802.8106 t

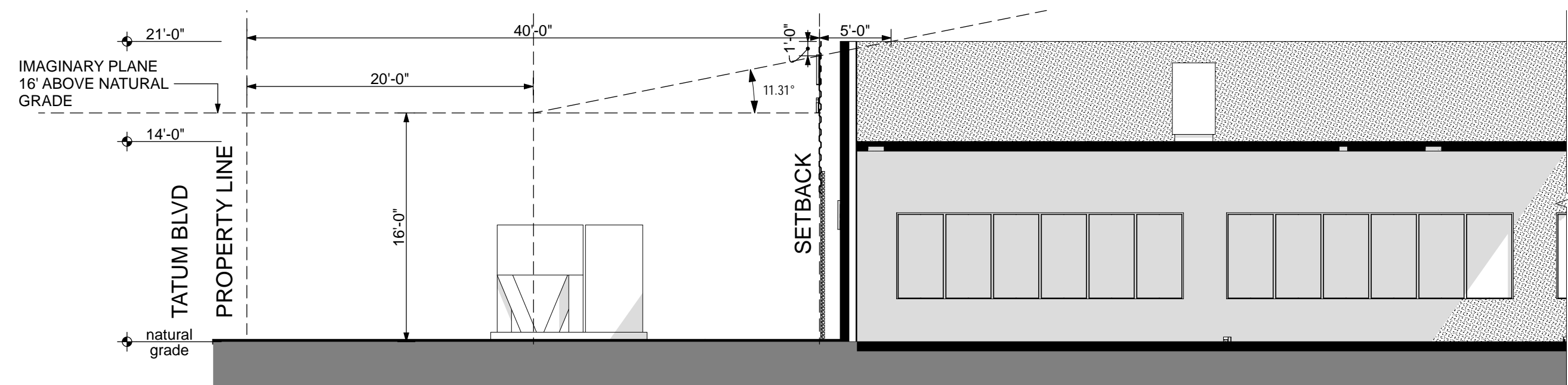
PROJECT NO.	DATE OF ISSUE
2018_041	02.07.2019
REVISION NO.	DATE
1	09.26.2018
2	11.01.2018
3	01.22.2019
4	02.19.2019

PROJECT TEAM
 John Cantrell BD

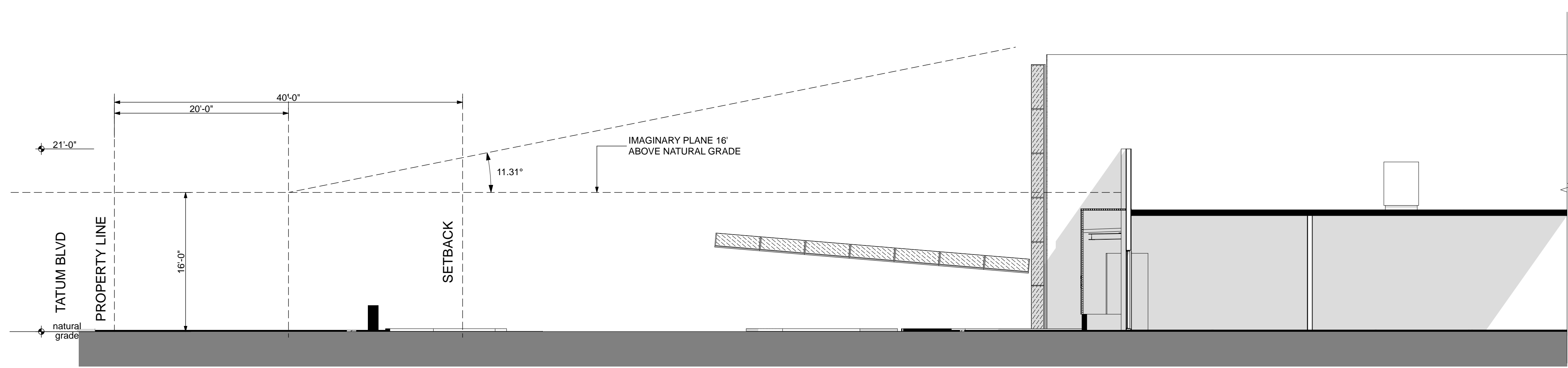
PROJECT PHASE
 SUP major amendment
 Review #4

SHEET CONTENTS
 sections & open space criteria analysis

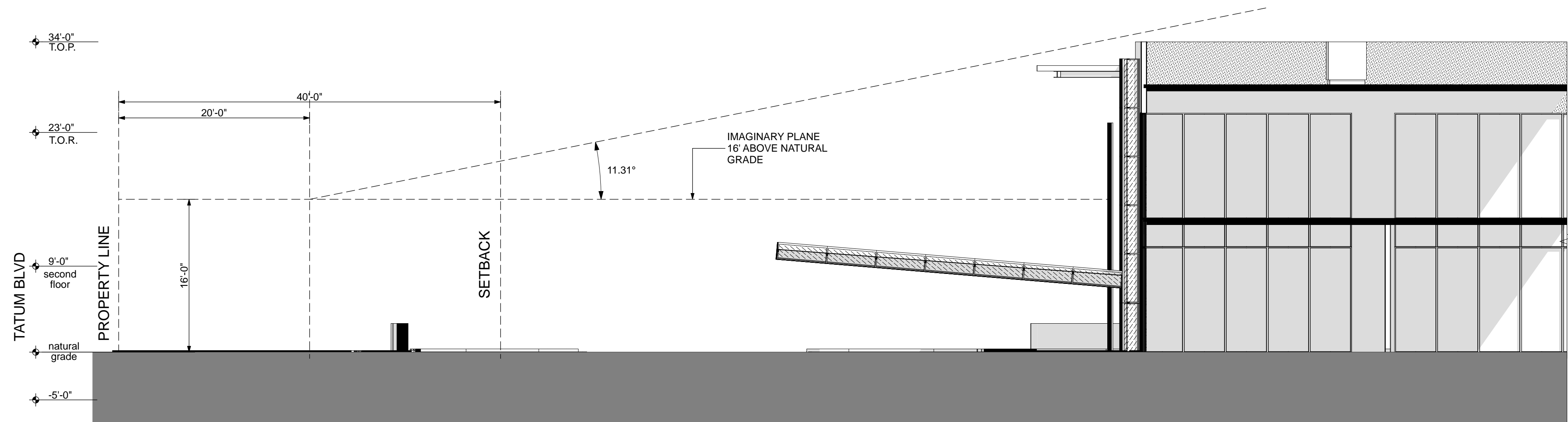
SHEET NO.
05.5.1



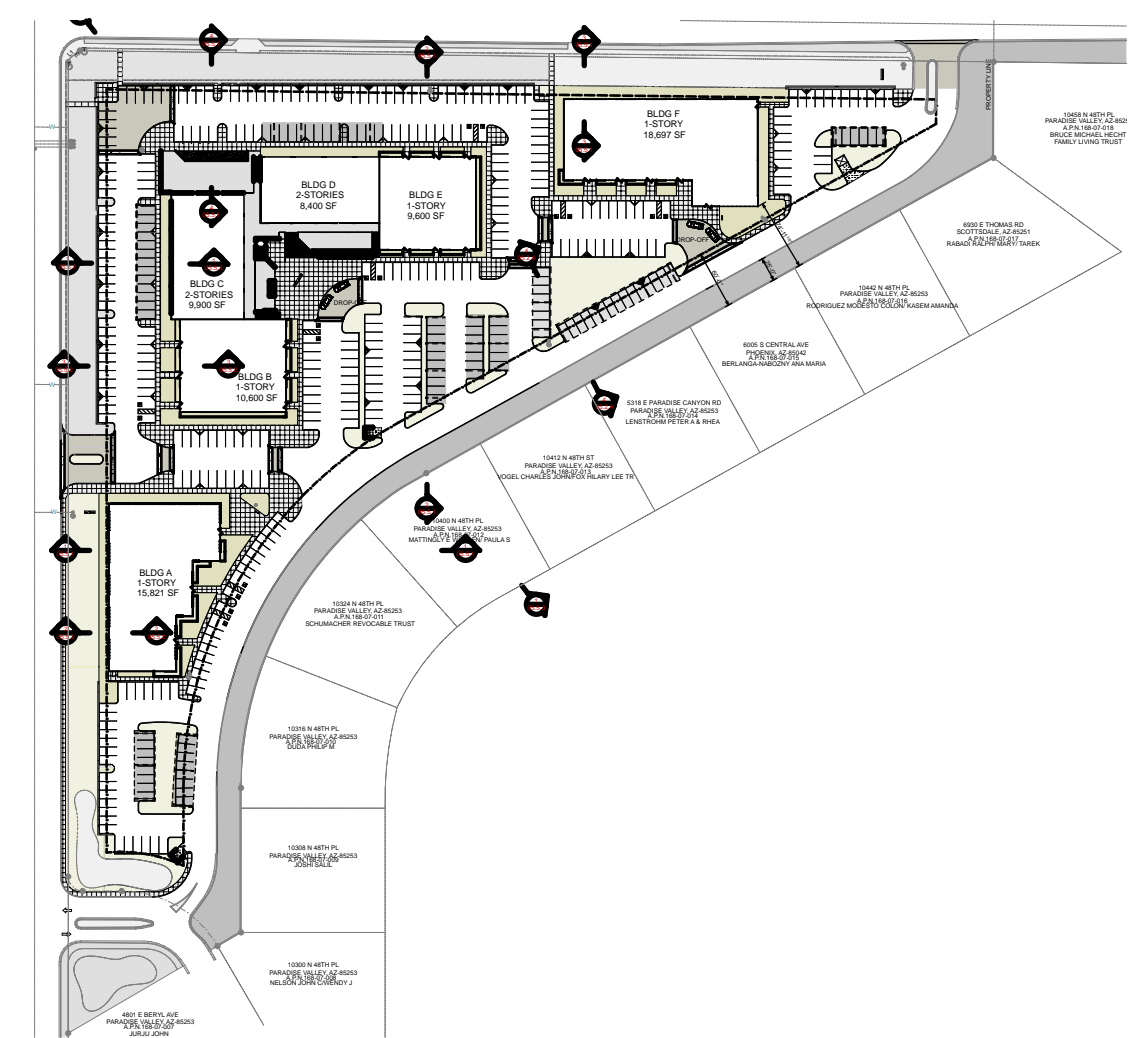
2 OPEN SPACE CRITERIA ANALYSIS ON TATUM BLVD
 0 4' 8' 16'



3 OPEN SPACE CRITERIA ANALYSIS ON TATUM BLVD
 0 4' 8' 16'



1 OPEN SPACE CRITERIA ANALYSIS ON TATUM BLVD
 0 4' 8' 16'



KEY PLAN
 NORTH

© 2017 this third copy or electronic drawing is an instrument of service and the property of the Orcutt|Winslow Partnership and shall remain their property. The design professional shall not be responsible for any alterations, modifications or additions made to this drawing by any party other than the design professional. Use of this drawing shall be limited to the original use for which it was prepared and publication thereof is expressly limited to such use in use or reproduction. Unless otherwise agreed in writing, the design professional reserves all copyright or other proprietary interest in this drawing, and it may not be used for any other purpose without the design professional's written consent. Publication by any method in whole or part is prohibited without the written permission of the design professional. Any information obtained or conclusions derived from this drawing shall be at the user's sole risk.

mountain view medical center, LLC
Mountain View Medical Center Redevelopment
 10555, 10565, 10575, 10585, 10595, 10599 N. Tatum Blvd., Paradise Valley, Arizona 85253

CLIENT CONTACT
 mountain view medical center, LLC
 2944 N. 44th St.
 Phoenix, AZ 85018
 602.802.8106 t

PROJECT NO.	DATE OF ISSUE
2018_041	02.07.2019
REVISION NO.	DATE
1	09.26.2018
2	11.01.2018
3	01.22.2019
4	02.19.2019

PROJECT TEAM
 John Cantrell BD

PROJECT PHASE
 SUP major amendment Review #4

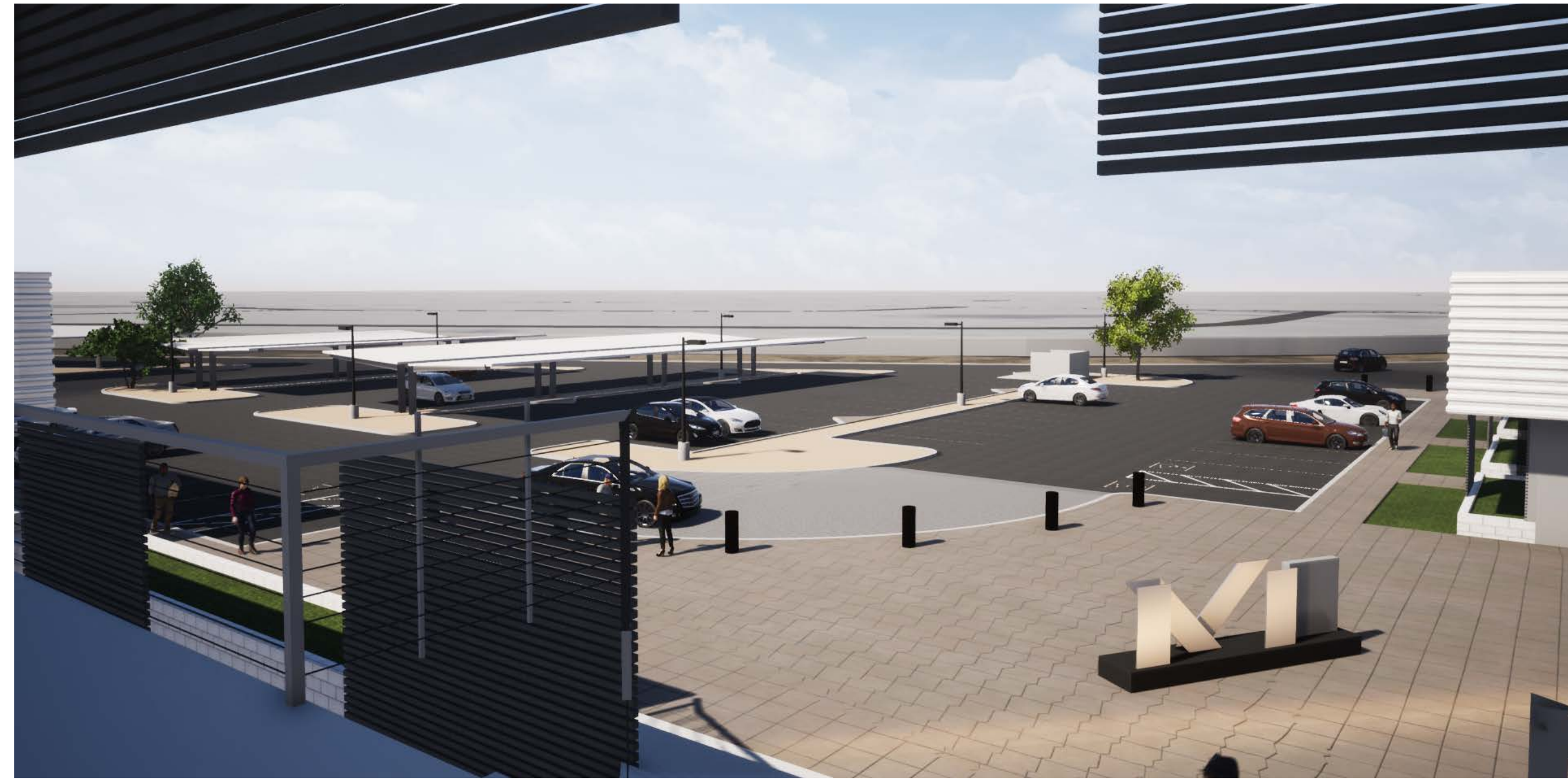
SHEET CONTENTS
 open space criteria analysis

SHEET NO.
 05.5.2

Orcutt|Winslow Project 2018_041 Mountain View Medical Center Redevelopment, Sections and Open Space Criteria Sheet 05.5.3 site section and viewsheds was plotted by Bhoomi Desai on Monday, February 11, 2019 at 4:47 PM. file found at BIM Server: HC Bimserver - BIMcloud Basic for ARCHICAD 21/Health Care Studio/18_041-01Min/ViewMedicalCTRRedevlpjmm



2 PHASE II BLDG A VIEW FROM EAST PROPERTY WALL



3 VIEW FROM THE SECOND LEVEL OF BLDG D



1 SECTION THROUGH BLDG E PHASE III AND ADJACENT PLOT

0 1/2" 1" 2"



© 2017 this third copy or electronic drawing is an instrument of service and the property of the Orcutt|Winslow Partnership and shall remain their property. The design professional shall not be responsible for any alterations, modifications or additions made to this drawing by any party other than the design professional. Use of this drawing shall be limited to the original use for which it was prepared and publication thereof is expressly limited to such use, in full or reproduction. Unless otherwise agreed to in writing, the design professional reserves all copyright or other proprietary interest in this drawing, and it may not be used for any other purpose without the design professional's written consent. Publication by any method in whole or part is prohibited without the written permission of the design professional. Any information obtained or conclusions derived from this drawing shall be at the user's sole risk.

mountain view medical center, LLC
Mountain View Medical Center Redevelopment
 10555, 10565, 10575, 10585, 10595, 10599 N. Tatum Blvd., Paradise Valley, Arizona 85253

CLIENT CONTACT
 mountain view medical center, LLC 602.802.8106 t
 2944 N. 44th St. Phoenix, AZ 85018

PROJECT NO.	DATE OF ISSUE
2018_041	02.07.2019
REVISION NO.	DATE
1	09.26.2018
2	11.01.2018
3	01.22.2019
4	02.19.2019

PROJECT TEAM DRAWN BY
 John Cantrell BD

PROJECT PHASE
 SUP major amendment
 Review #4
SHEET CONTENTS

site section and viewsheds

SHEET NO.

05.5.3