

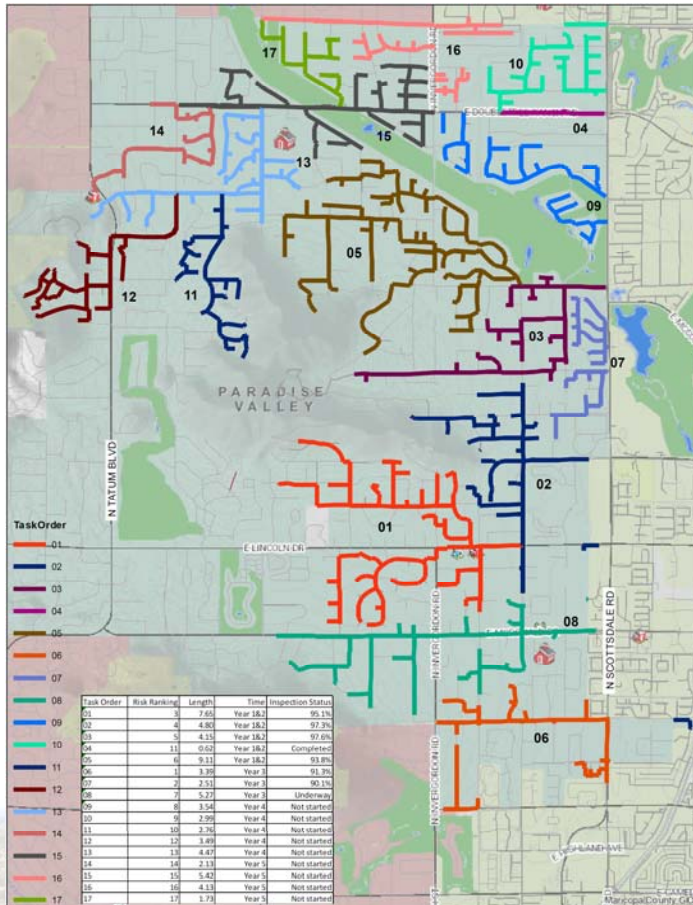
TOWN OF PARADISE VALLEY

Sanitary Sewer Repairs

June 13, 2019



SANITARY SEWER ASSESSMENT PROGRAM ²



Sewer Assessment Program

- Required per IGA with City of Scottsdale
- 5 Year Program with 17 Task Orders
- Currently in Year 3 of 5
- Making Critical Repairs As Identified
- Consultation with City of Scottsdale
- Typical Defects Found
 - a. Offset Joints
 - b. Structural Pipe Defects
 - c. Manhole Corrosion
 - d. Buried Manholes & Cleanouts



PROJECT SCOPE

- Repair Structural Defects Identified By Sewer Assessment Program
 - Glen Dr.
 - Cheney Dr.
 - Hummingbird Ln.
 - Approximately ½ Mile of Repairs
 - \$409,526.81 Repair Contract
- Repair Process Includes:
 - Resident Notification
 - Pre-Installation Video & Cleaning
 - Sewer Flow Monitoring
 - Standby Bypass Pumping
 - Cast In Place Pipe (CIPP) Lining Technology
 - Restore Residential Connections

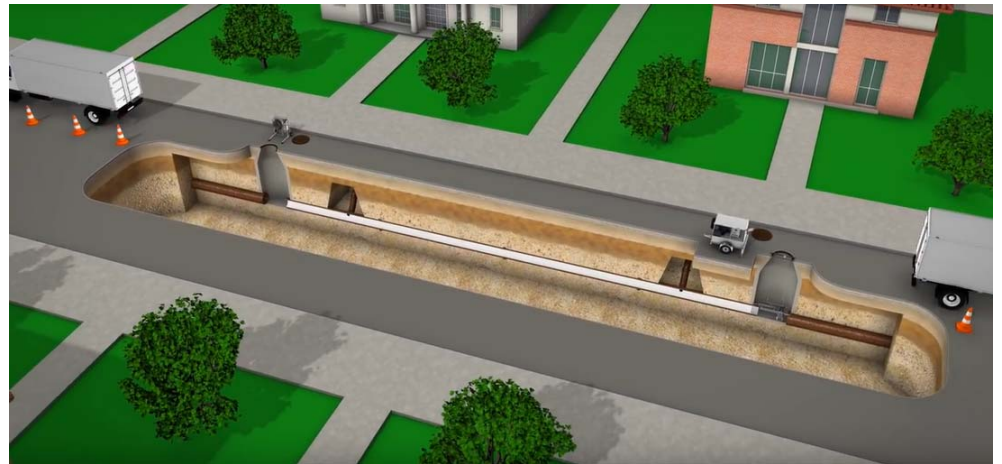


Photo Courtesy of Reline America



CAST IN PLACE PIPE (CIPP) LINING INSTALLATION ⁴



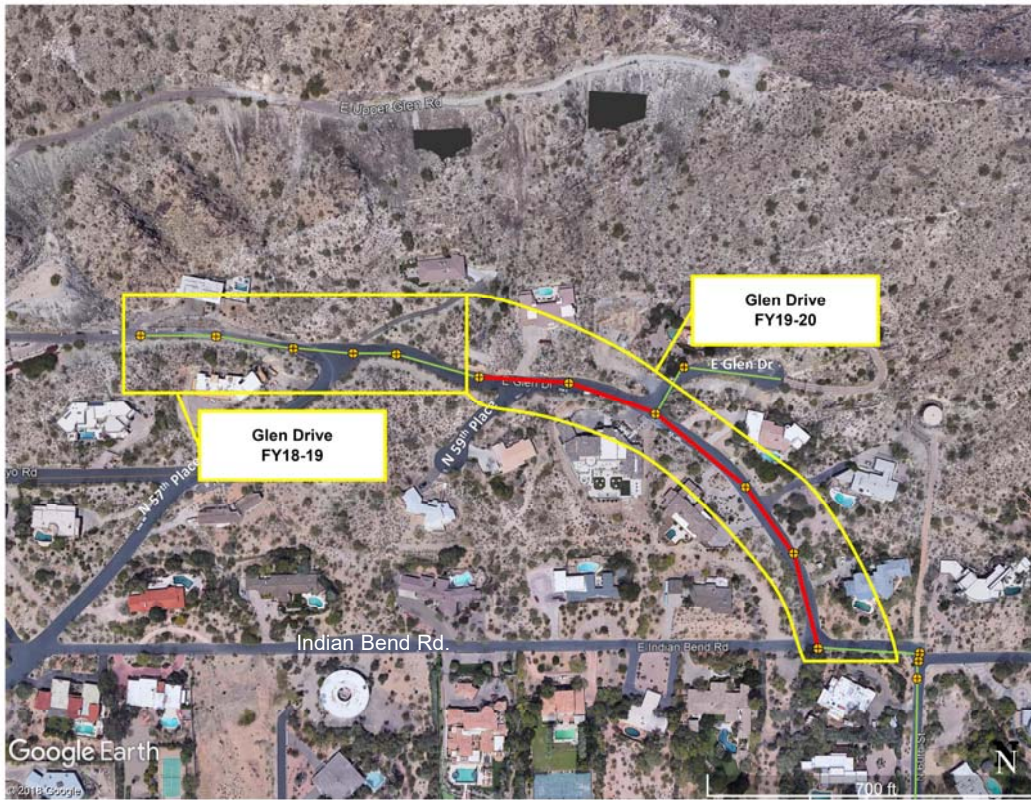
Pre-Lining



Post-Lining



GLEN DR. SANITARY SEWER REPAIRS

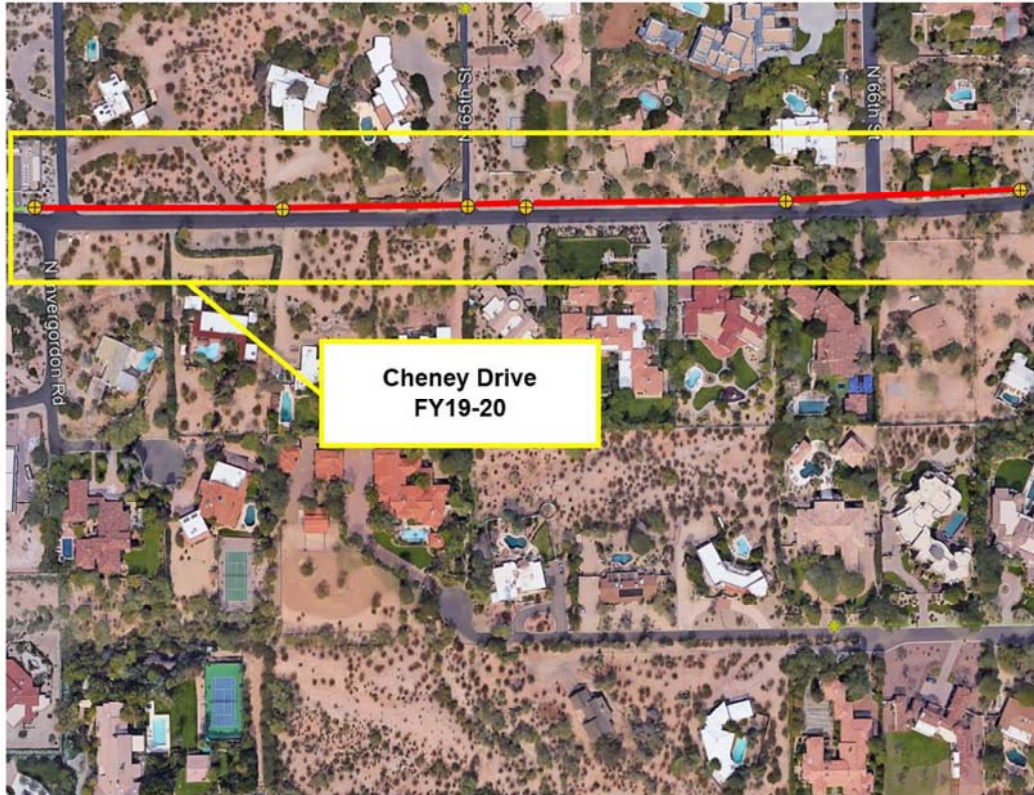


Project Information

- Structural Defects Identified
- 981' of 8" DIP
- 8 Residential Connections



CHENEY DR. SANITARY SEWER REPAIRS

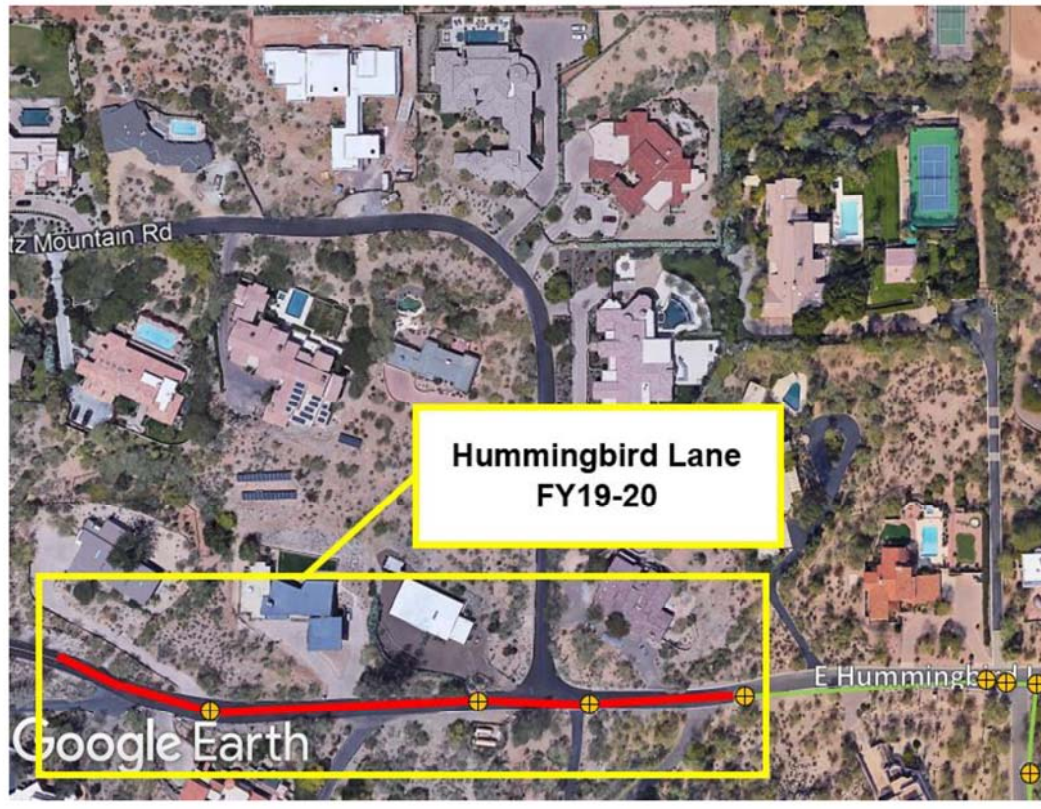


Project Information

- Structural Defects Identified
- Installation Date Unknown
- 914' of 8" VCP
- 14 Residential Connections



HUMMINGBIRD LN. SANITARY SEWER REPAIRS



Project Information

- Structural Defects Identified
- 723' of 8" DIP
- 5 Residential Connections



SANITARY SEWER REPAIRS

QUESTIONS?

