

mountain view medical center, LLC
Mountain View Medical Center Redevelopment
10555, 10565, 10575, 10585, 10595, 10599 N. Tatum Blvd.,
Paradise Valley, Arizona 85253

CLIENT CONTACT

mountain view medical center
8014 N. 14th St.
Phoenix, AZ 85018

602.802.8106 t

PROJECT NO. **2018_041** DATE OF ISSUE **11.01.2018**

REVISION NO. **1** DATE **09.26.2018**
2 DATE **11.01.2018**

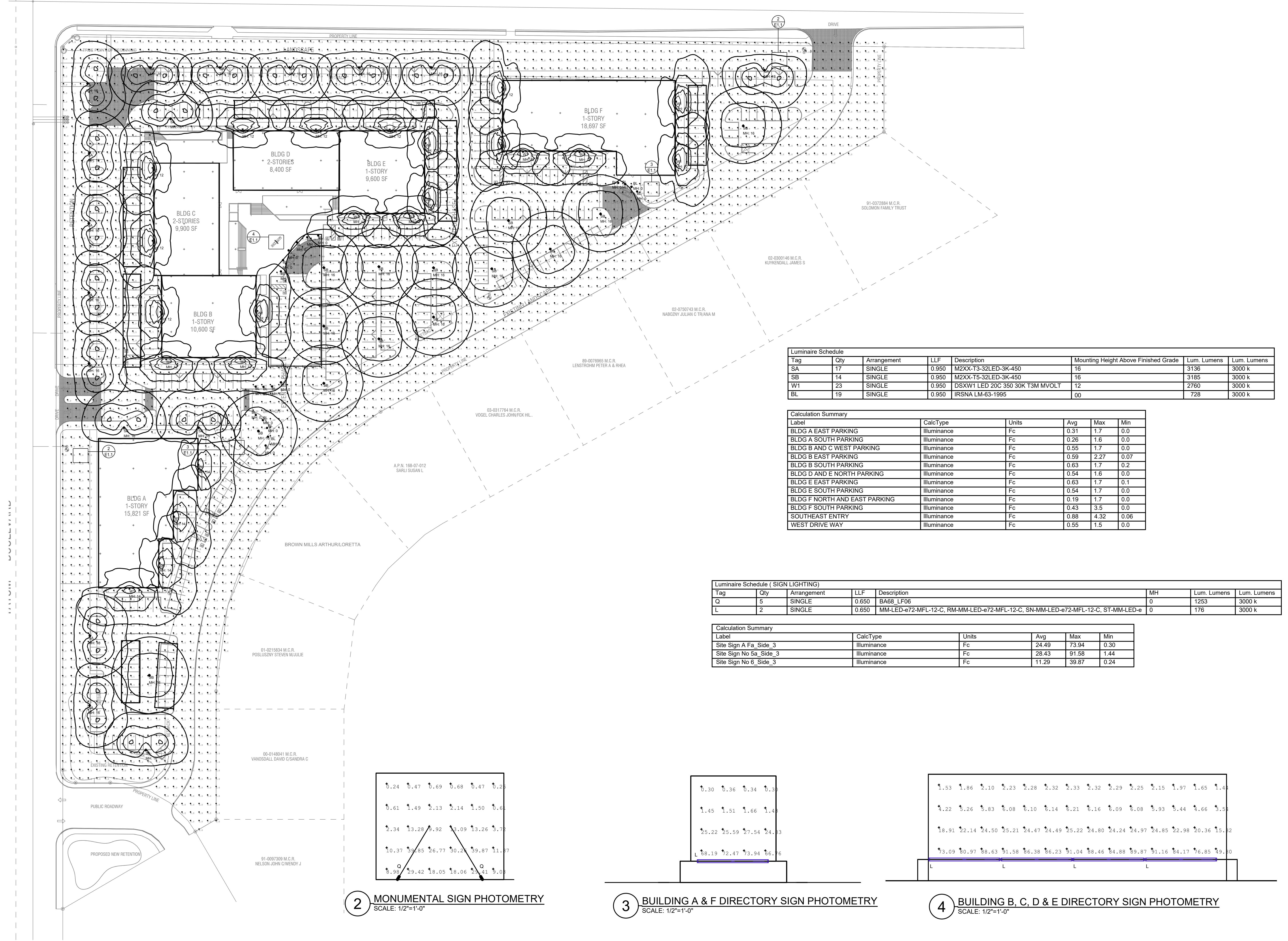
PROJECT TEAM **John Cantrell** DRAWN BY **BD**

PROJECT PHASE **SUP major amendment Review #3**

SHEET CONTENTS **photometric site plan**

SHEET NO.

E-1.1



Luminaire Schedule

Tag	Qty	Arrangement	LLF	Description	Mounting Height Above Finished Grade	Lum. Lumens	Lum. Lumens
SA	17	SINGLE	0.950	M2XX-T3-32LED-3K-450	16	3136	3000 k
SB	14	SINGLE	0.950	M2XX-T5-32LED-3K-450	16	3185	3000 k
W1	23	SINGLE	0.950	DSXW1 LED 20C 350 30K T3M MVOLT	12	2760	3000 k
BL	19	SINGLE	0.950	IRSNA LM-63-1995	00	728	3000 k

Calculation Summary

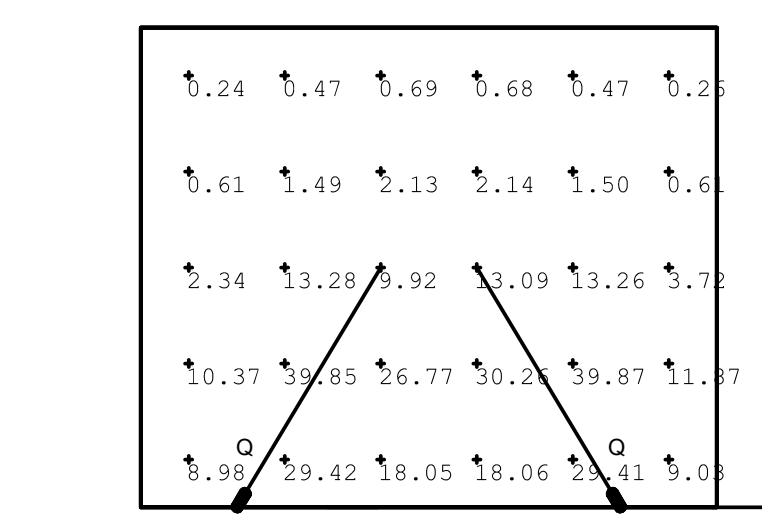
Label	CalcType	Units	Avg	Max	Min
BLDG A EAST PARKING	Illuminance	Fc	0.31	1.7	0.0
BLDG A SOUTH PARKING	Illuminance	Fc	0.26	1.6	0.0
BLDG B AND C WEST PARKING	Illuminance	Fc	0.55	1.7	0.0
BLDG B EAST PARKING	Illuminance	Fc	0.59	2.27	0.07
BLDG B SOUTH PARKING	Illuminance	Fc	0.63	1.7	0.2
BLDG D AND E NORTH PARKING	Illuminance	Fc	0.54	1.6	0.0
BLDG E EAST PARKING	Illuminance	Fc	0.63	1.7	0.1
BLDG E SOUTH PARKING	Illuminance	Fc	0.54	1.7	0.0
BLDG F NORTH AND EAST PARKING	Illuminance	Fc	0.19	1.7	0.0
BLDG F SOUTH PARKING	Illuminance	Fc	0.43	3.5	0.0
SOUTHEAST ENTRY	Illuminance	Fc	0.88	4.32	0.06
WEST DRIVE WAY	Illuminance	Fc	0.55	1.5	0.0

Luminaire Schedule (SIGN LIGHTING)

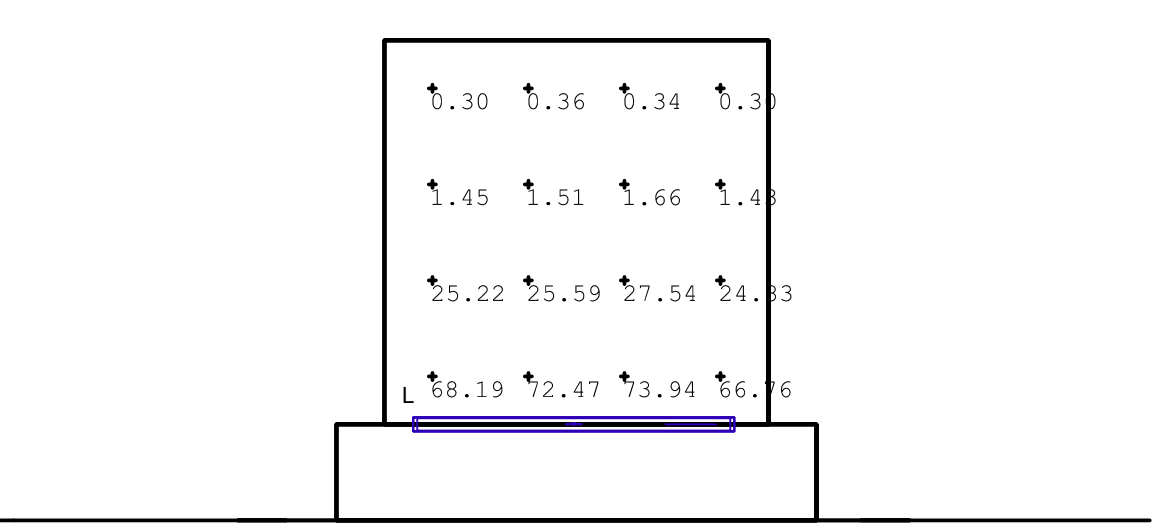
Tag	Qty	Arrangement	LLF	Description	MH	Lum. Lumens	Lum. Lumens
Q	5	SINGLE	0.650	BA68_LF06	0	1253	3000 k
L	2	SINGLE	0.650	MM-LED-e72-MFL-12-C, RM-MM-LED-e72-MFL-12-C, SN-MM-LED-e72-MFL-12-C, ST-MM-LED-e	0	176	3000 k

Calculation Summary

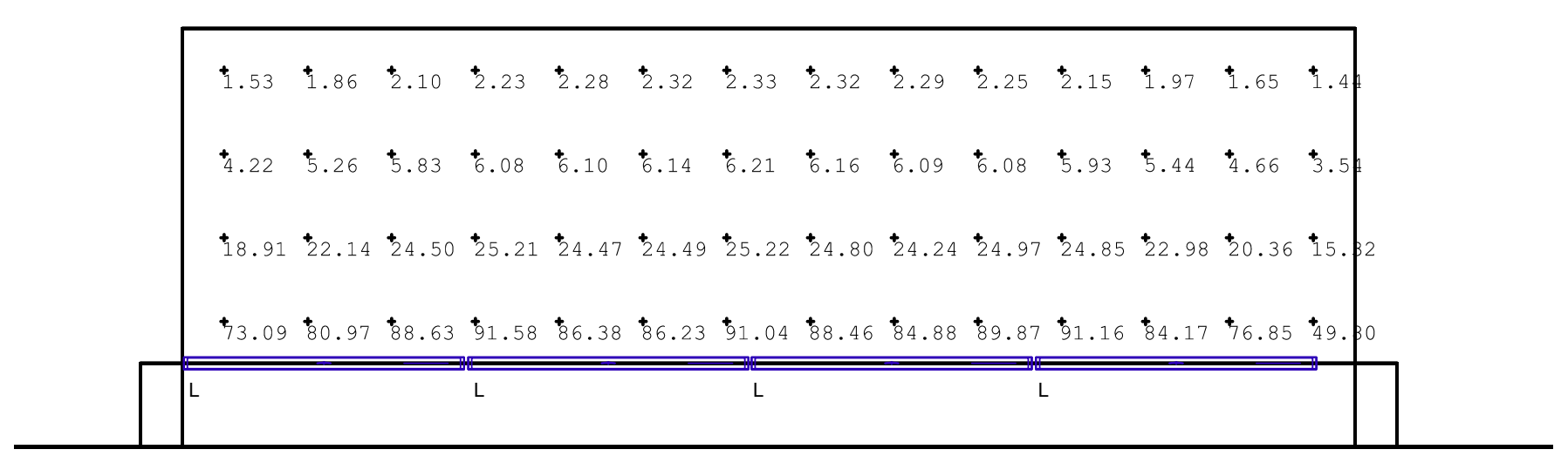
Label	CalcType	Units	Avg	Max	Min
Site Sign A Fa_Side_3	Illuminance	Fc	24.49	73.94	0.30
Site Sign No 5a_Side_3	Illuminance	Fc	28.43	91.58	1.44
Site Sign No 6_Side_3	Illuminance	Fc	11.29	39.87	0.24



2 MONUMENTAL SIGN PHOTOMETRY
SCALE: 1/2"=1'-0"



3 BUILDING A & F DIRECTORY SIGN PHOTOMETRY
SCALE: 1/2"=1'-0"



4 BUILDING B, C, D & E DIRECTORY SIGN PHOTOMETRY
SCALE: 1/2"=1'-0"

1 PHOTOMETRIC SITE PLAN
SCALE: 1"=40'-0"

PARADOX 10
19W LED
10" Architectural In-Grade

Suitable For Wet Locations

IP67

DESCRIPTION
Hydrel's Paradox Series sealed modular in-grade luminaires are multi-purpose units designed for up lighting architectural and landscape features. These units can be flush mounted into a variety of substrates including concrete or tile, or landscape materials, and are ideal when aperture size or luminaire depth is a priority.

ORDERING INFORMATION EXAMPLE: PDX10 B 18LED WHT30K MVOLT NSP FLC 345

Model*	Door Material*	LED Type*	LED Color*	Voltage*	Light Distribution*
PDX10	SS Stainless Steel	18LED 18 Chip LED array	WHT30K 3000K CCT	MVOLT (120-277V)	NSP Narrow Flood
	SS2 Stainless Steel		WHT30K 4000K CCT		MFL Medium Flood
	B Bronze		WHT30K 5000K CCT		FL Flood
			AMPC Amber		WFL Wide Flood
			BLU Blue		VWFL Very Wide Flood (no optical)
			GRN Green		HSP Horizontal Spot
			RED Red		HFL Horizontal Flood

Lens*	Conduit Entry*	Accessories	Options	Listing
FLC Flat Lens Clear	141 Top Side 1/2" Side In-Grade	Internal	LOMI 0-10V Dimming	NEC International
FLCAP Flat Lens Clear, Anti-Slip	255 Top 25mm Side	Internal Honeycomb Louver	FRP Frosted Filter	ETL ETL-Listed
FLCAPM Flat Lens Frosted, Slip Resistant		External	RG Decorative Rock Guard	CEC California

HYDREL 9144 Deering Avenue, Second Floor • Chatsworth, CA 91311 • 866.533.9901 • www.hydrrel.com ©2009-2017 Acuity Brands Lighting, Inc. Rev. 03/27/17 PDX10_LED_MONO

PERFORMANCE DATA IP67

LUMEN OUTPUT
Lumen output is from photometric tests performed in accordance with IESNA LM-79-08. Data is considered to be representative of the configuration shown, within the tolerances allowed by Lighting Facts. Actual performance may differ as a result of end-user environment and application. Contact factory for performance data on any configurations not shown here.

Configuration	Name	Beam Angle (FOV)	Field Angle (FOV)	Watts (PW)	Distance (m)
3000K 80CRI	NSP 2 x 2	14.8 x 14.8	27.1 x 27.1	19	53
	MFL 6 x 6	35.7 x 35.7	109 x 109	19	54
	FL 5 x 5	75.8 x 56.2	95.7 x 83.4	19	48
	WFL 7 x 7	114.2 x 114.2	136.1 x 136.1	19	54
	HSP 4 x 3	20.8 x 20.8	38.9 x 38.9	20	57
3000K 90CRI	HFL 4 x 3	40.5 x 15.6	60.8 x 30.4	20	68
	VWFL 7 x 7	110.2 x 110.2	141 x 141	18	45
	NSP 2 x 2	14.8 x 14.8	27.1 x 27.1	19	90
	MFL 6 x 6	35.7 x 35.7	109 x 109	19	91
	FL 5 x 5	75.8 x 56.2	95.7 x 83.4	19	79
5000K 90CRI	WFL 7 x 7	114.2 x 114.2	136.1 x 136.1	19	90
	HSP 3 x 3	20.8 x 20.8	38.9 x 38.9	20	96
	HFL 4 x 3	40.5 x 15.6	60.8 x 30.4	20	80
	VWFL 7 x 7	110.2 x 110.2	141 x 141	18	77
	NSP 2 x 2	14.8 x 14.8	27.1 x 27.1	19	90

Lumen Ambient Temperature (LAT) Multipliers
Use these factors to determine relative lumen output for average ambient temperatures from 20°C to 40°C.

Ambient Temperature	Lumen Multiplier
20°C	1.02
25°C	0.97
30°C	0.92
35°C	0.87
40°C	0.82

Projected LED Lumen Maintenance
Use these factors to determine projected lumen output for the fixture platform in a 20°C ambient, based on 8000 hours of LED being tested per IESNA LM-80-08 and extrapolated per IESNA TM-21-11.

Operating Hours	0	25,000	50,000	100,000
Lumen Maintenance Factor	1	0.99	0.98	0.96

Electrical Load

Light Category	Drive Current (mA)	System Voltage (V)	Current (A)
18 LED	350mA	19	0.18, 0.09, 0.08, 0.07, 0.05, 0.04

Slip Resistance and Load Rating

MAXIMUM LOAD RATING
Fast compression force of 4.0 kN/m².

LENS STATIC COEFFICIENT OF FRICTION
PDX10 Anti-Slip Lens (FLCAP): Dry = 0.76; Wet = 0.20
PDX10 Slip-Resistant Lens (FLCAPM): Dry = 0.84; Wet = 0.43

LED LIFE: L70/60,000 hours
OPERATING TEMPERATURE: -30°C Through 40°C

LAMP ADJUSTMENT DETAIL

FEATURES & SPECIFICATIONS

DOOR MATERIAL: Die cast bronze or stainless steel.
HOUSING: Composite molded polycarbonate with patent pending internal direct access junction box for through-branch wiring. Internal junction box provides 44 in³ volume to ensure proper seal during installation. The housing is UL listed, impact and corrosion resistant for use in all types of environments. The housing has a side-car configuration and houses the lamp and power module components as well as the rear door finishing section.
LED TYPE: Monochromatic and White LEDs, 19W, 18-chip arrays.
VOLTAGE: See Ordering Guide.
LIGHT DISTRIBUTION: See ordering guide. LED module has 15° of internal tilt and 300° of rotation.
LENS MATERIAL: Tempered clear flat borosilicate glass. The patent pending door/lens seal uses proprietary side edge technology to secure the assembly to the housing. Four optic screws hold the assembly in place. The lens is notched to provide maximum aperture opening.

CONDUIT ENTRY: Two modular 1/2" NPT side entries standard, bottom hubs are molded with 1/2" NPT threaded knockout.
POWER MODULE: Integrally mounted modular LED driver.
ACCESSORIES: See Ordering Guide.
FINISH: Natural bronze, stainless steel, or stainless steel with a brushed finish.
LISTING: UL, CUL, IP67
WARRANTY: 5-year limited warranty. Complete warranty terms located at www.acuitybrands.com/CustomerResources/terms_and_conditions.aspx
NOTE: Actual performance may differ as a result of end-user environment and application. All units are design to optical output, measured under laboratory conditions at 25°C. Specifications subject to change without notice.

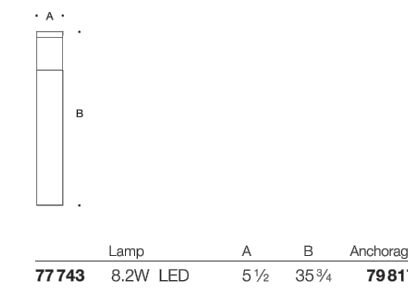
HYDREL 9144 Deering Avenue, Second Floor • Chatsworth, CA 91311 • 866.533.9901 • www.hydrrel.com ©2009-2017 Acuity Brands Lighting, Inc. Rev. 03/27/17 PDX10_LED_MONO

LED bollards with unshielded light

Post construction: Constructed of copper-free extruded and die-cast aluminum. Die castings are marine grade, copper free (a 0.3% copper content) A300.0 aluminum alloy.
Lamp enclosure: Die-cast aluminum post cap with three-ply opal glass diffuser with screw neck. Fully gasketed for weather tight operation using high temperature silicone gaskets.
Electrical: 8.2W LED luminaire, 12 S total system watts, -30°C start temperature. Integral 120V through 277V electronic LED driver, 0-10V dimming. LED module(s) are available from factory for easy replacement. Standard LED color temperature is 3000K with a >90 CRI. Available in 4000K (>90 CRI); add suffix K4 to order.
Note: LEDs supplied with luminaire. Due to the dynamic nature of LED technology, LED luminaire data on this sheet is subject to change at the discretion of BEGA-US. For the most current technical data, please refer to www.bega-us.com.
Anchor base: Heavy cast aluminum, slotted for precise alignment. Mounts to BEGA 79 R04 anchorage kit. Bollard secures to base with one stainless steel set screw. The mounting system allows the luminaire to be adjusted independent of anchor bolt orientation.
Finish: All BEGA standard finishes are polyester powder coat with minimum 3 mil thickness. Available in four standard BEGA colors: Black (BLK), White (WHT), Bronze (BRZ), Silver (SLV). To specify, add appropriate suffix to catalog number. Custom colors supplied on special order.
CSA: certified to U.S. and Canadian standards, suitable for wet locations. Protection class IP65.
Weight: 11.5 lbs.

Type:
BEGA Product:
Project:
Voltage:
Color:
Options:
Modified:

Luminaire lumens: 728



BEGA-US 1000 BEGA Way, Carpinteria, CA 93013 (805) 684-0533 FAX (805) 566-9474 www.bega-us.com
©copyright BEGA-US 2016 Updated 1/18



6 LUMINAIRE TYPE "ST1"
NTS

5 LUMINAIRE TYPE "BL"
NTS

2929 n central ave
eleventh floor
phoenix arizona 85012

602.257.1764 t
602.257.9029 f

www.owp.com

orcutt winslow



© 2017 Orcutt Winslow Architects. All rights reserved. This document is the property of Orcutt Winslow Architects. It is intended for the use of the client and is not to be distributed, copied, or reproduced in any form without the written consent of Orcutt Winslow Architects. The client agrees to hold Orcutt Winslow Architects harmless from any and all claims, damages, or liabilities arising from the use of this document. Orcutt Winslow Architects is not responsible for any errors or omissions in this document. The client agrees to hold Orcutt Winslow Architects harmless from any and all claims, damages, or liabilities arising from the use of this document. Orcutt Winslow Architects is not responsible for any errors or omissions in this document.

HENDERSON ENGINEERS
5343 NORTH 16TH STREET, SUITE 460
PHOENIX, AZ 85016
TEL (602) 336-5200 FAX (602) 336-5201
WWW.HENDERSONENGINEERS.COM
1850003561
AZ CORPORATE NUMBER: 10470-0
EXPIRES 06/30/19

mountain view medical center, LLC
Mountain View Medical Center Redevelopment
10555, 10565, 10575, 10585, 10595, 10599 N. Tatum Blvd.,
Paradise Valley, Arizona 85258

CLIENT CONTACT
mountain view medical center, LLC
8044 N. Tatum St.
Phoenix, AZ 85018 602.802.8106 t

PROJECT NO. 2018_041
DATE OF ISSUE 11.01.2018

REVISION NO. 1
DATE 09.26.2018
2
DATE 11.01.2018

PROJECT TEAM John Cantrell
DRAWN BY BD

PROJECT PHASE
SUP major amendment
Review #3

SHEET CONTENTS
photometric light fixture cut sheets
SHEET NO.

E-1.4