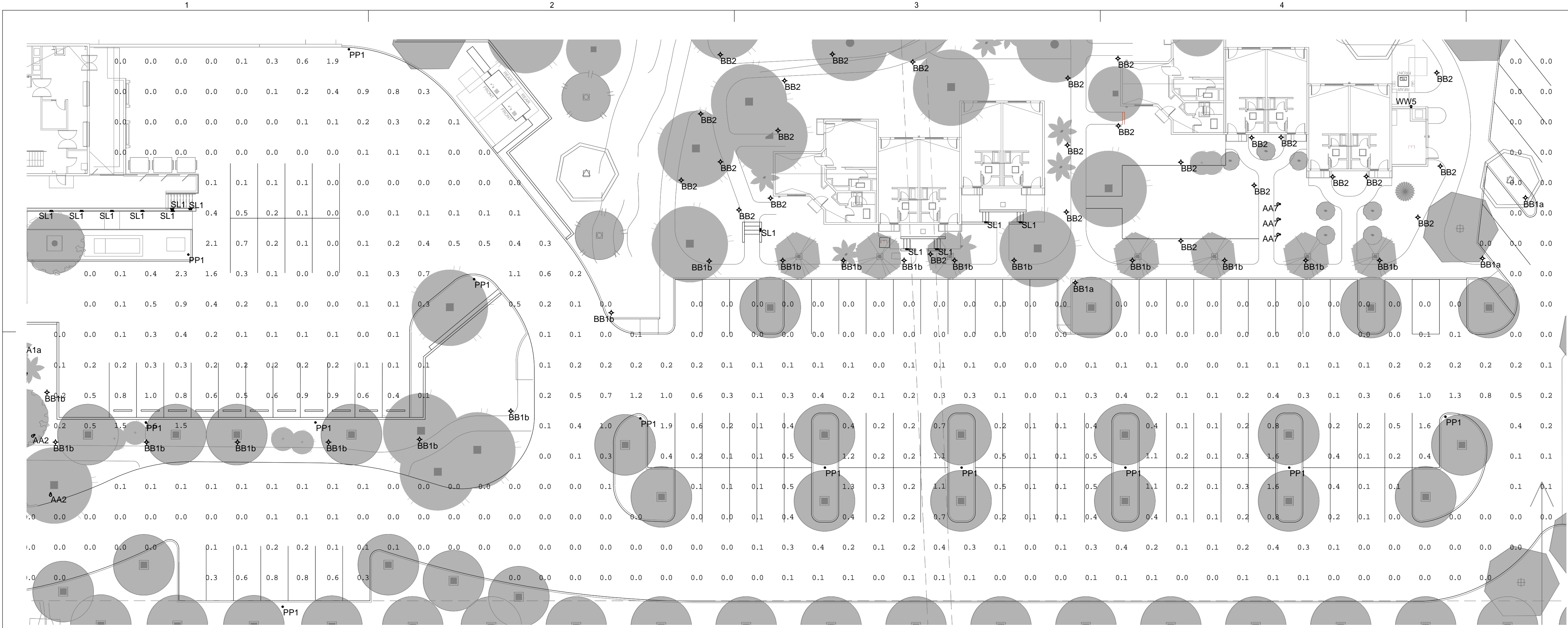
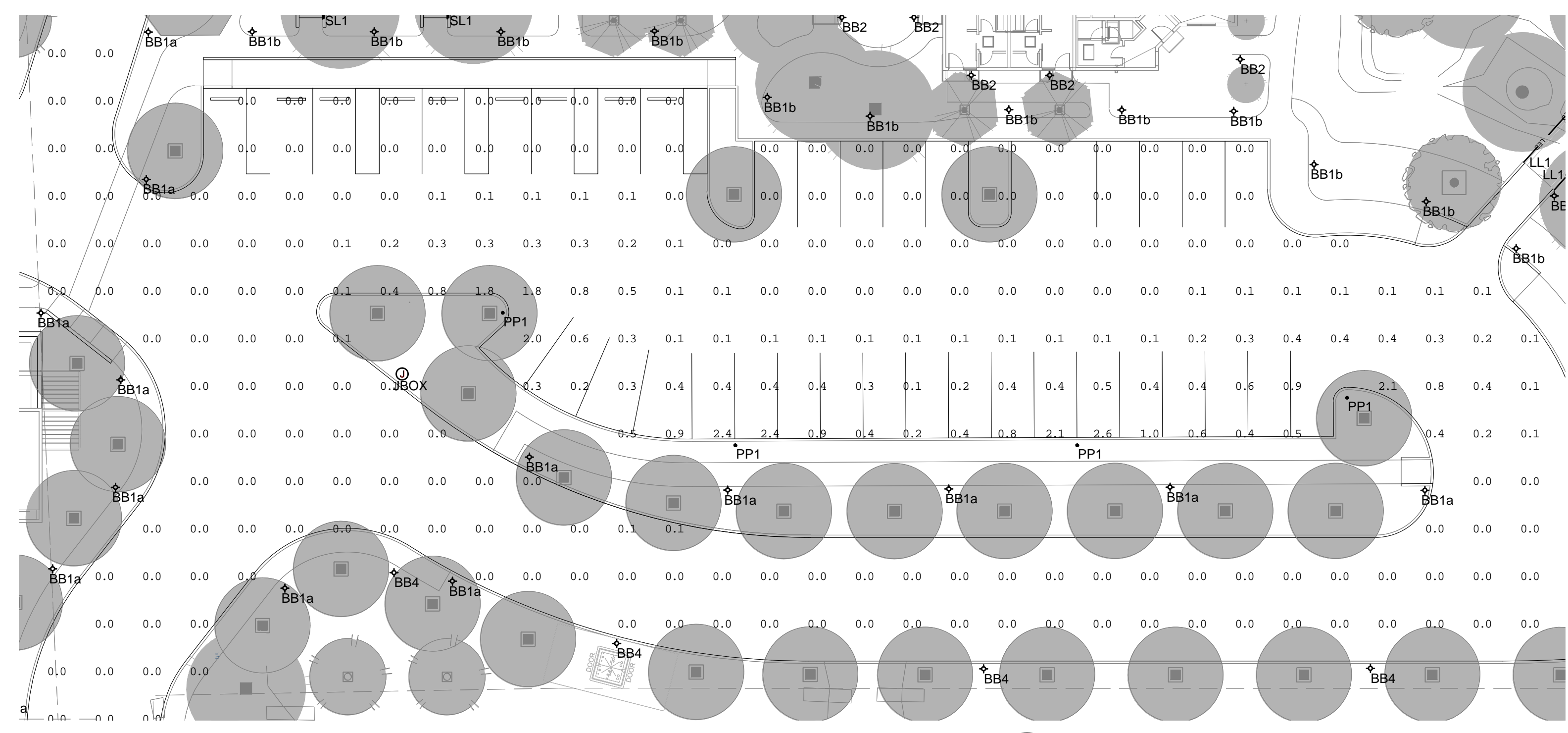


11/11/2015 ALL IDEAS, DESIGNS AND ARRANGEMENTS INDICATED ON THESE DRAWINGS ARE THE PROPERTY OF THE ARCHITECT AND ARE TO BE USED IN CONNECTION WITH THIS SPECIFIC PROJECT AND SHALL NOT BE USED OTHERWISE WITHOUT THE EXPRESSED CONSENT OF THE ARCHITECT. THERE SHALL BE NO CHANGES OR DEVIATION FROM THE DRAWINGS OR ACCOMPANYING SPECIFICATION WITHOUT THE EXPRESSED CONSENT OF THE ARCHITECT.



1 PARKING LOT LIGHTING PHOTOMETRICS
 LT-601-03 1" = 20'
 BAR IS 3" LONG WHEN PRINTED AT FULL SCALE

REFER TO OVERALL SITE DRAWINGS FOR PROPERTY LINE LOCATIONS



2 PARKING LOT LIGHTING PHOTOMETRICS
 LT-601-03 1" = 20'
 BAR IS 3" LONG WHEN PRINTED AT FULL SCALE

GENERAL NOTES:

1. VERIFY MOUNTING LOCATIONS AND HEIGHTS OF ALL DEVICES WITH ARCHITECT PRIOR TO INSTALLATION.
2. ALL FIXTURE AND CONTROL LOCATIONS MUST BE VERIFIED BY THE LIGHTING CONSULTANT AT THE JOBSITE PRIOR TO ROUGH-IN.
3. LOOPING INDICATES CONTROL ZONE DESIGN INTENT ONLY. REFER TO ELECTRICAL DRAWINGS FOR DIMMING, SWITCHING AND CIRCUITRY INFORMATION.
4. THE CONTRACTOR IS RESPONSIBLE FOR PROVIDING ALL LABOR AND EQUIPMENT THAT IS NECESSARY FOR THE FOCUS AIMING OF ADJUSTABLE LIGHTING FIXTURES AND THE PROGRAMMING OF LIGHTING PRESETS OR EFFECTS PER THE DIRECTION OF THE LIGHTING DESIGN CONSULTANT.
5. ELECTRICAL CONTRACTOR, FIXTURE SUPPLIER, AND LAMP SUPPLIER MUST VERIFY THAT ALL LED LAMPS ARE COMPATIBLE WITH FIXTURE TRIM HOUSINGS, LAMP SOCKETS, LOW VOLTAGE TRANSFORMERS, AND ELECTRICAL DIMMING SYSTEMS PRIOR TO PLACING ANY LIGHTING EQUIPMENT ORDERS AFTER FIXTURE SHOP DRAWING SUBMITTALS ARE APPROVED. LAMPS SHOULD BE OPERABLE AT FULL OR DIMMED INTENSITY WITH NO VISUALLY PERCEIVED FLICKERING WHEN ALL LAMPS ON THE CIRCUIT ARE ENERGIZED.



THIS DRAWING RELATES TO LIGHTING DESIGN INTENT ONLY. THE RUZIKA COMPANY DOES NOT ASSUME RESPONSIBILITY FOR STRUCTURAL INTEGRITY, BUILDING, REGIONS, CONSTRUCTION, FABRICATION, MATERIAL, OR EQUIPMENT.
 THE RUZIKA COMPANY WILL NOT BE HELD RESPONSIBLE FOR THE LIABILITY OF CONTRACTORS, OR BUILDERS TO EXECUTE THE DESIGN PLANS.
 ALL ELECTRICAL INFORMATION AND LOCAL ENERGY CODE COMPLIANCE ITEMS TO BE PROVIDED BY A LICENSED ELECTRICAL ENGINEER OR ELECTRICAL CONTRACTOR.
 ALL EQUIPMENT ATTACHMENT DETAILS AND STRUCTURAL LOAD CALCULATIONS MUST BE PROVIDED BY A LICENSED STRUCTURAL ENGINEER.
 FOR LIGHTING DESIGN INFORMATION ONLY

COTTONWOODS RESORT & SUITES
 6160 NORTH SCOTTSDALE RD
 PARADISE VALLEY AZ

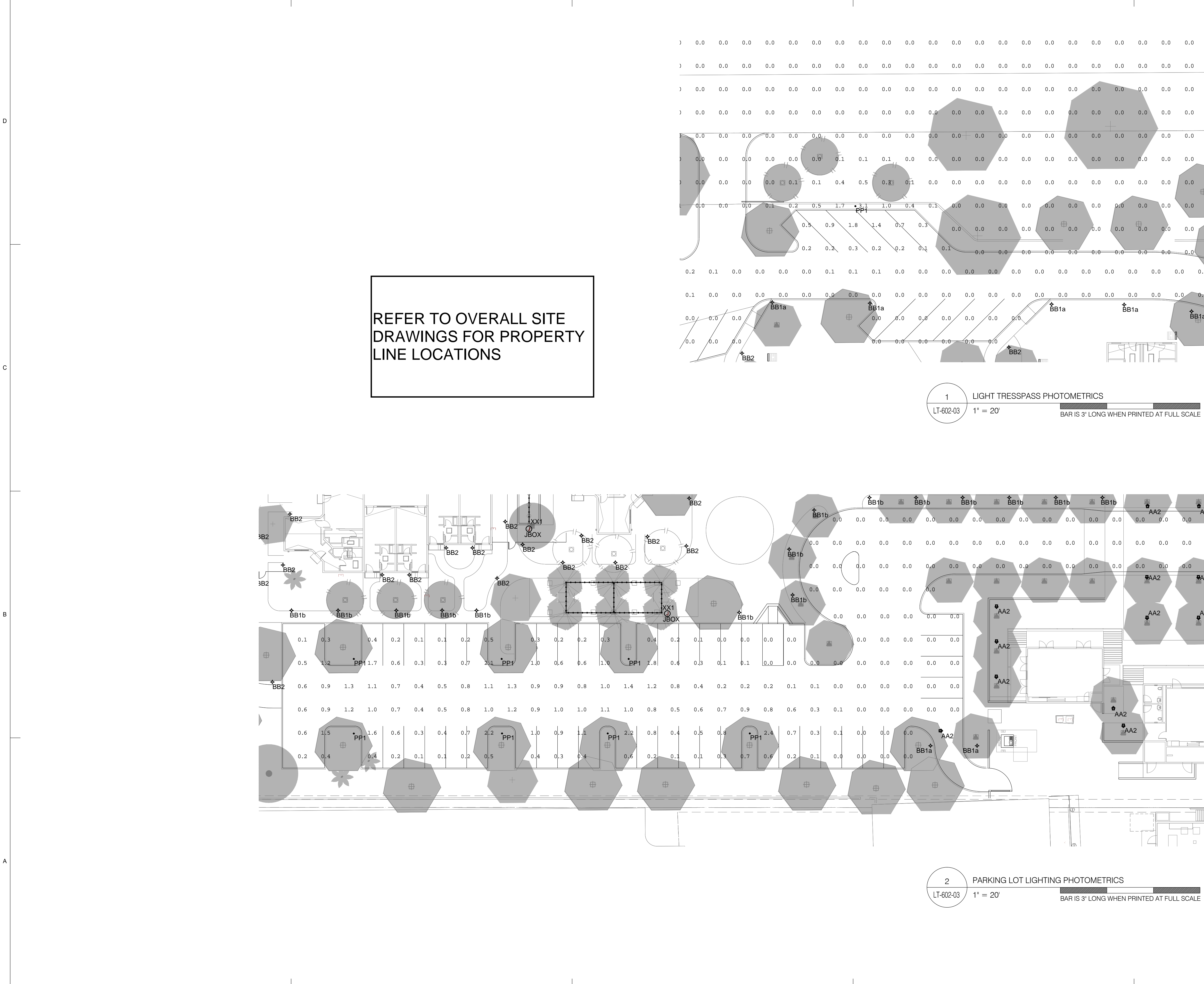
PROJECT NO.	14192	
REV. NO.	DATE ISSUED	REASON
13	11/11/15	AS-03 SITE LIGHTING REVISIONS

PERMIT SUBMITTAL - CP-3
 APRIL 23, 2015

Sheet Title
LIGHTING PHOTOMETRICS

Sheet No.
LT-601-03

11/11/2015
 ALL IDEAS, DESIGNS AND ARRANGEMENTS INDICATED ON THESE DRAWINGS ARE THE PROPERTY OF THE ARCHITECT AND ARE TO BE USED IN CONNECTION WITH THIS SPECIFIC PROJECT AND SHALL NOT BE USED OTHERWISE WITHOUT THE EXPRESSED CONSENT OF THE ARCHITECT. THERE SHALL BE NO CHANGES OR DEVIATION FROM THE DRAWINGS OR ACCOMPANYING SPECIFICATION WITHOUT THE EXPRESSED CONSENT OF THE ARCHITECT.



GENERAL NOTES:

1. VERIFY MOUNTING LOCATIONS AND HEIGHTS OF ALL DEVICES WITH ARCHITECT PRIOR TO INSTALLATION.
2. ALL FIXTURE AND CONTROL LOCATIONS MUST BE VERIFIED BY THE LIGHTING CONSULTANT AT THE JOBSITE PRIOR TO ROUGH-IN.
3. LOOPING INDICATES CONTROL ZONE DESIGN INTENT ONLY. REFER TO ELECTRICAL DRAWINGS FOR DIMMING, SWITCHING AND CIRCUITRY INFORMATION.
4. THE CONTRACTOR IS RESPONSIBLE FOR PROVIDING ALL LABOR AND EQUIPMENT THAT IS NECESSARY FOR THE FOCUS AIMING OF ADJUSTABLE LIGHTING FIXTURES AND THE PROGRAMMING OF LIGHTING PRESETS OR EFFECTS PER THE DIRECTION OF THE LIGHTING DESIGN CONSULTANT.
5. ELECTRICAL CONTRACTOR, FIXTURE SUPPLIER, AND LAMP SUPPLIER MUST VERIFY THAT ALL LED LAMPS ARE COMPATIBLE WITH FIXTURE TRIM HOUSINGS, LAMP SOCKETS, LOW VOLTAGE TRANSFORMERS, AND ELECTRICAL DIMMING SYSTEMS PRIOR TO PLACING ANY LIGHTING EQUIPMENT ORDERS AFTER FIXTURE SHOP DRAWING SUBMITTALS ARE APPROVED. LAMPS SHOULD BE OPERABLE AT FULL OR DIMMED INTENSITY WITH NO VISUALLY PERCEIVED FLICKERING WHEN ALL LAMPS ON THE CIRCUIT ARE ENERGIZED.

delawie
 Architecture • Experience • Integrity
 2265 India Street
 San Diego, CA 92101
 (619) 299-6690
 Fax (619) 299-5513
 delawie.com

THE RUZIKA COMPANY
 2 Executive Circle, Suite 200
 Irvine, California 92614
 PH (949) 255-2479 Fax (949) 250-0181
 www.ruzika.com
 LIGHTING DESIGNERS • THEATRE CONSULTANTS

THIS DRAWING RELATES TO LIGHTING DESIGN INTENT ONLY. THE RUZIKA COMPANY DOES NOT ASSUME RESPONSIBILITY FOR STRUCTURAL INTEGRITY, BUILDING, REGIONS, CONSTRUCTION, FABRICATION, MATERIAL, OR EQUIPMENT.
 THE RUZIKA COMPANY WILL NOT BE HELD RESPONSIBLE FOR THE LIABILITY OF CONTRACTORS OR BUILDERS TO EXECUTE THE DESIGN PLANS.
 ALL ELECTRICAL INFORMATION AND LOCAL ENERGY CODE COMPLIANCE STANDARDS TO BE PROVIDED BY A LICENSED ELECTRICAL ENGINEER OR ELECTRICAL CONTRACTOR.
 ALL EQUIPMENT ATTACHMENT DETAILS AND STRUCTURAL LOAD CALCULATIONS MUST BE PROVIDED BY A LICENSED STRUCTURAL ENGINEER.
 FOR LIGHTING DESIGN INFORMATION ONLY

COTTONWOODS RESORT & SUITES
 6160 NORTH SCOTTSDALE RD
 PARADISE VALLEY AZ

PROJECT NO. 14192

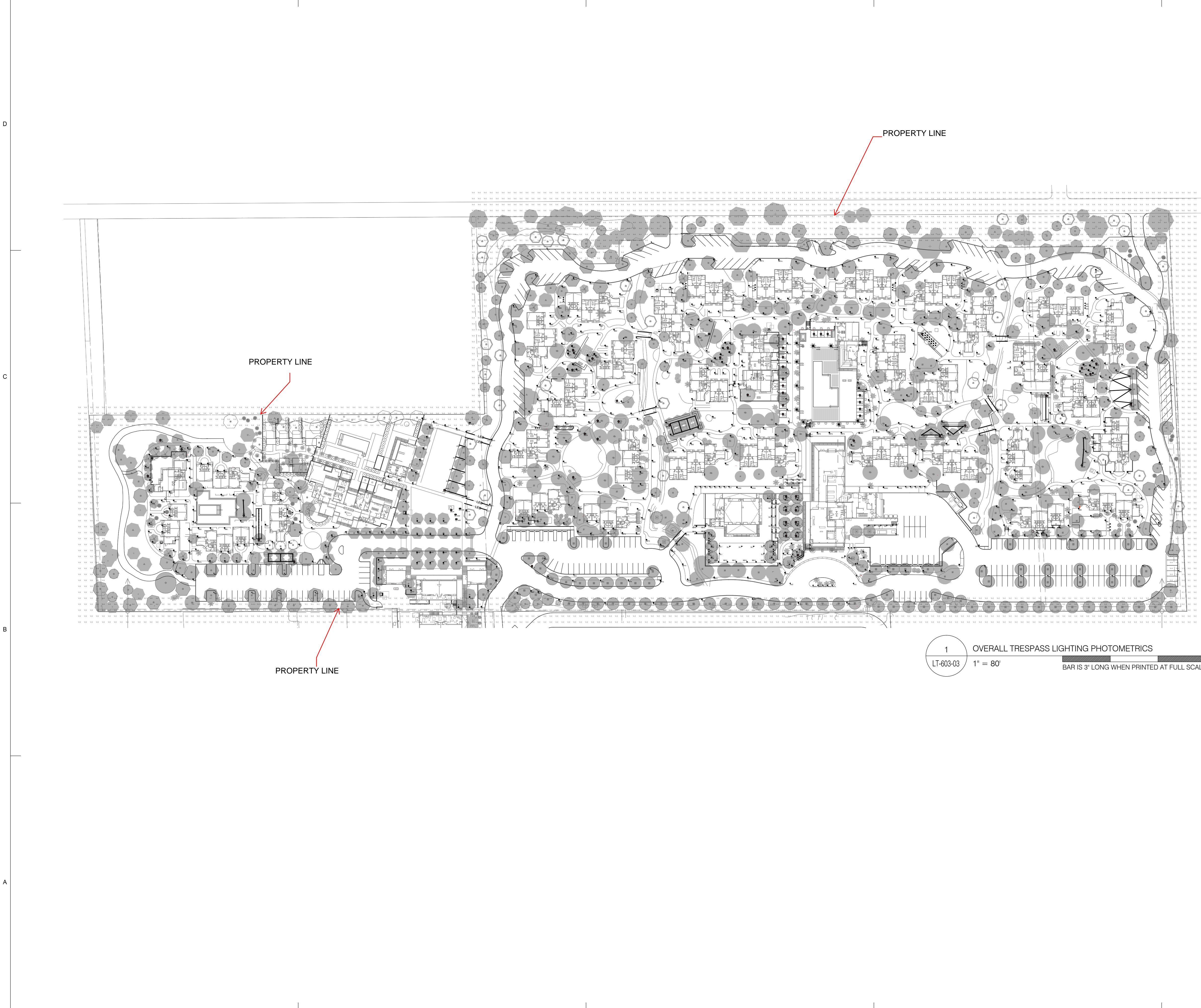
REV. NO.	DATE ISSUED	REASON
13	11/11/15	AS-03 SITE LIGHTING REVISIONS

PERMIT SUBMITTAL - CP-3
 APRIL 23, 2015

Sheet Title
LIGHTING PHOTOMETRICS

Sheet No.
LT-602-03

11/11/2015
 ALL IDEAS, DESIGNS AND ARRANGEMENTS INDICATED ON THESE DRAWINGS ARE THE PROPERTY OF THE ARCHITECT AND ARE TO BE USED IN CONNECTION WITH THIS SPECIFIC PROJECT AND SHALL NOT BE USED OTHERWISE WITHOUT THE EXPRESSED CONSENT OF THE ARCHITECT. THERE SHALL BE NO CHANGES OR DEVIATION FROM THE DRAWINGS OR ACCOMPANYING SPECIFICATION WITHOUT THE EXPRESSED CONSENT OF THE ARCHITECT.



1 OVERALL TRESPASS LIGHTING PHOTOMETRICS
 LT-603-03 1" = 80'
 BAR IS 3" LONG WHEN PRINTED AT FULL SCALE

GENERAL NOTES:

1. VERIFY MOUNTING LOCATIONS AND HEIGHTS OF ALL DEVICES WITH ARCHITECT PRIOR TO INSTALLATION.
2. ALL FIXTURE AND CONTROL LOCATIONS MUST BE VERIFIED BY THE LIGHTING CONSULTANT AT THE JOBSITE PRIOR TO ROUGH-IN.
3. LOOPING INDICATES CONTROL ZONE DESIGN INTENT ONLY. REFER TO ELECTRICAL DRAWINGS FOR DIMMING, SWITCHING AND CIRCUITRY INFORMATION.
4. THE CONTRACTOR IS RESPONSIBLE FOR PROVIDING ALL LABOR AND EQUIPMENT THAT IS NECESSARY FOR THE FOCUS AIMING OF ADJUSTABLE LIGHTING FIXTURES AND THE PROGRAMMING OF LIGHTING PRESETS OR EFFECTS PER THE DIRECTION OF THE LIGHTING DESIGN CONSULTANT.
5. ELECTRICAL CONTRACTOR, FIXTURE SUPPLIER, AND LAMP SUPPLIER MUST VERIFY THAT ALL LED LAMPS ARE COMPATIBLE WITH FIXTURE TRIM HOUSINGS, LAMP SOCKETS, LOW VOLTAGE TRANSFORMERS, AND ELECTRICAL DIMMING SYSTEMS PRIOR TO PLACING ANY LIGHTING EQUIPMENT ORDERS AFTER FIXTURE SHOP DRAWING SUBMITTALS ARE APPROVED. LAMPS SHOULD BE OPERABLE AT FULL OR DIMMED INTENSITY WITH NO VISUALLY PERCEIVED FLICKERING WHEN ALL LAMPS ON THE CIRCUIT ARE ENERGIZED.

delawie
 Architecture • Experience • Integrity
 2265 India Street
 San Diego, CA 92101
 (619) 299-6690
 Fax (619) 299-5513
 delawie.com

THE RUZIKA COMPANY
 2 Executive Circle, Suite 200
 Irvine, California 92614
 PH (949) 253-2479 Fax (949) 253-0181
 www.ruzika.com
 LIGHTING DESIGNERS • THEATRE CONSULTANTS

THIS DRAWING RELATES TO LIGHTING DESIGN INTENT ONLY. THE RUZIKA COMPANY DOES NOT ASSUME RESPONSIBILITY FOR STRUCTURAL INTEGRITY, BUILDING, RIGGING, CONSTRUCTION, FABRICATION, MATERIAL, OR EQUIPMENT.
 THE RUZIKA COMPANY WILL NOT BE HELD RESPONSIBLE FOR THE ABILITY OF CONTRACTORS OR BUILDERS TO EXECUTE THE DESIGN PLANS.
 ALL ELECTRICAL INFORMATION AND LOCAL ENERGY CODE COMPLIANCE ITEMS TO BE PROVIDED BY A LICENSED ELECTRICAL ENGINEER OR ELECTRICAL CONTRACTOR.
 ALL EQUIPMENT ATTACHMENT DETAILS AND STRUCTURAL LOAD CALCULATIONS MUST BE PROVIDED BY A LICENSED STRUCTURAL ENGINEER.
 FOR LIGHTING DESIGN INFORMATION ONLY

COTTONWOODS RESORT & SUITES
 6160 NORTH SCOTTSDALE RD
 PARADISE VALLEY AZ

PROJECT NO. 14192

REV. NO.	DATE ISSUED	REASON
13	11/11/15	AS-03 SITE LIGHTING REVISIONS

PERMIT SUBMITTAL - CP-3
 APRIL 23, 2015

Sheet Title
LIGHTING PHOTOMETRICS

Sheet No.
LT-603-03