

**IRONWOOD GOLF VILLAS**  
 IRONWOOD GOLF VILLAS AT CAMELBACK  
 COUNTRY CLUB SCOTTSDALE ROAD, PARADISE VALLEY

**REFINED GARDENS**  
 DESIGN - BUILD - MAINTAIN

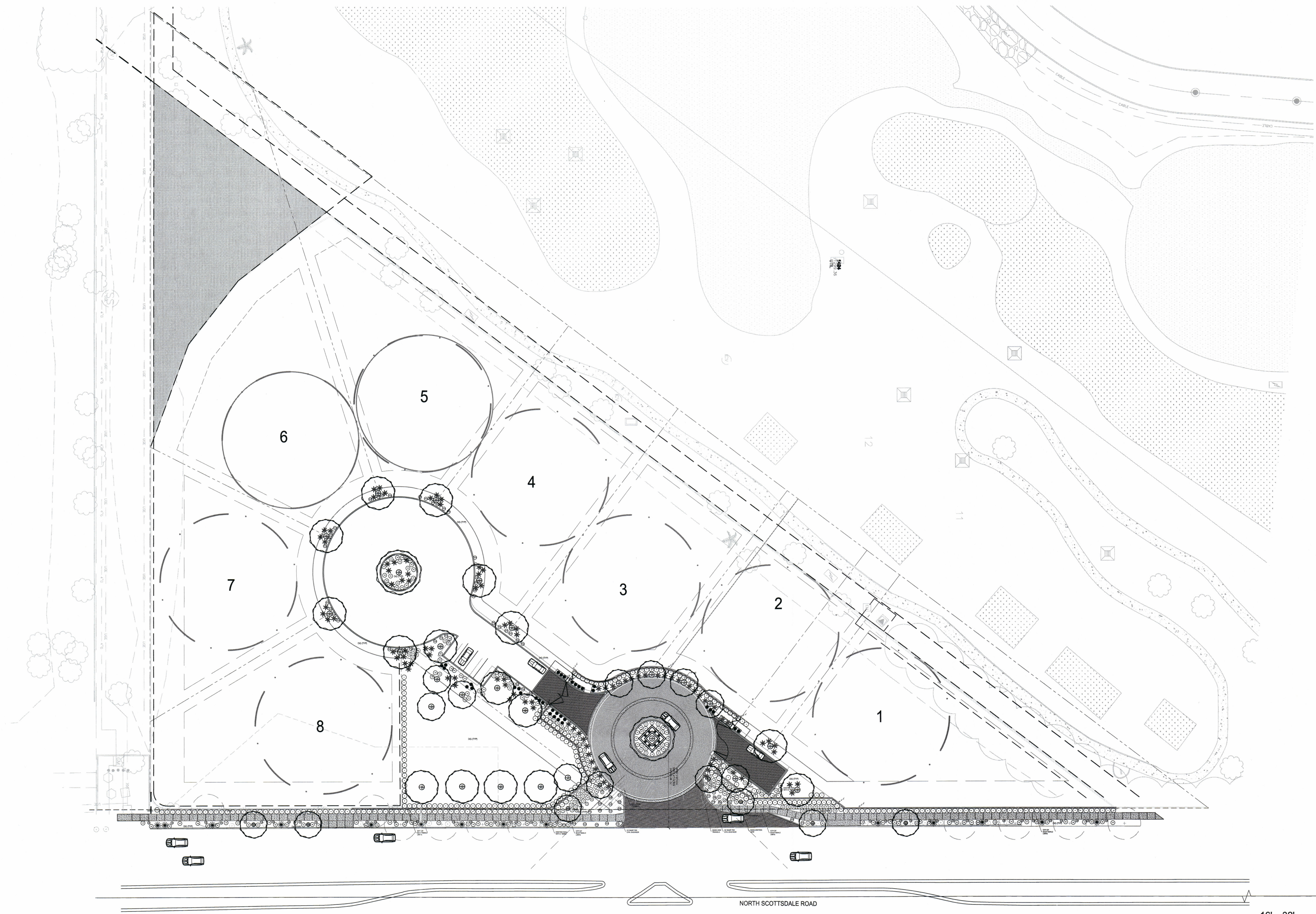


7147 EAST RANCHO VISTA DRIVE SUITE 121  
 480 588 7168 | REFINEDGARDENS.COM

DATE  
 OCTOBER 2017

REVISIONS  
 28 AUGUST 2018

DRAWING:  
 OVER ALL PLAN  
 SHEET  
**L-0 of 7**



16' 32' 64'  
 SCALE: 1/32"=1'

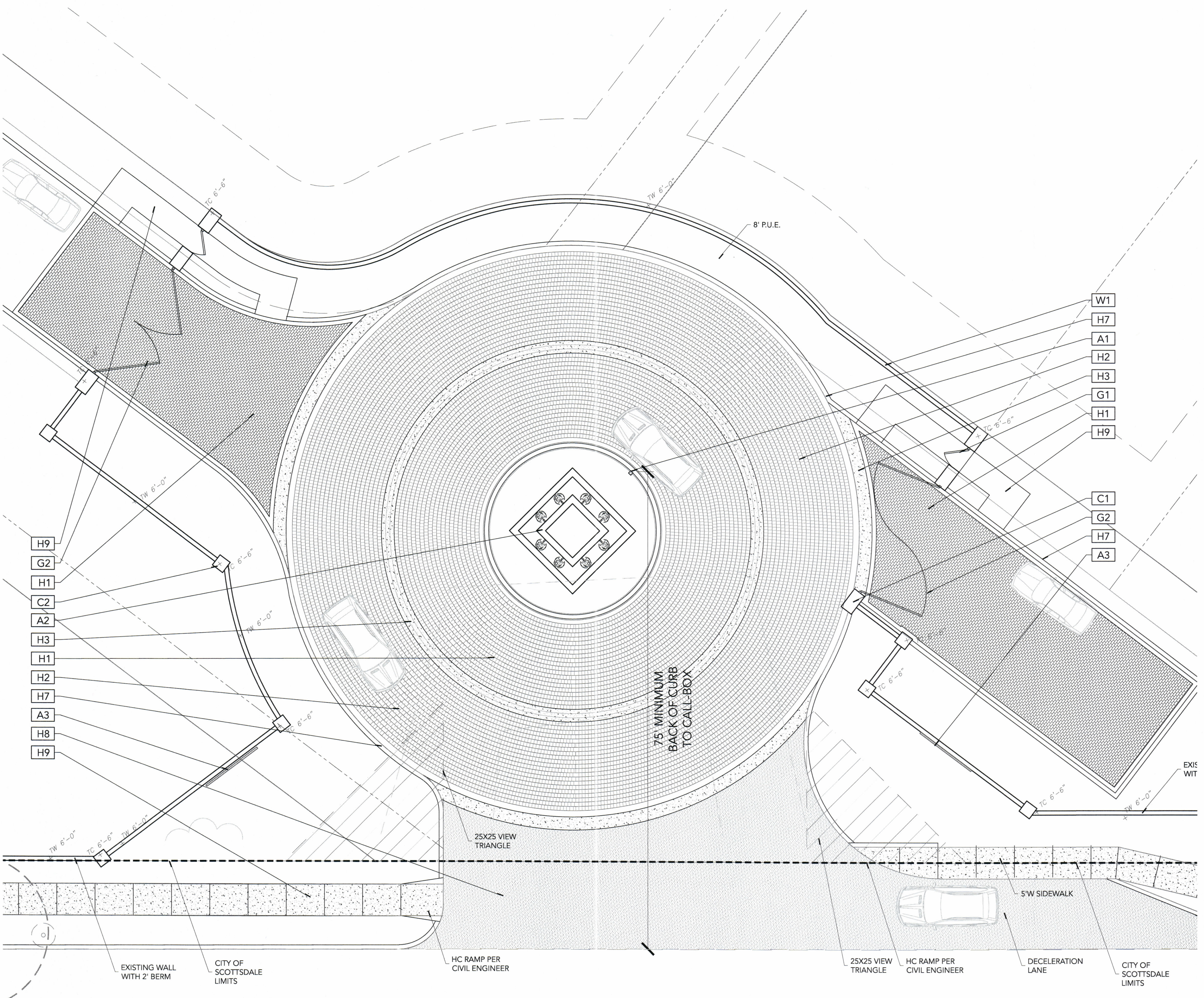
ARIZONA  
 Call 611 or visit Arizona611.com

Any unauthorized reproduction, reuse or publication of these plans by any method is prohibited without written consent from Refined Gardens or the owner. Unauthorized reproduction may be subjected to criminal liability.



8"X4" HOLLAND NON TUMBLED PAVERS 3 TONE BROWN LAID IN HARING BOND PATTERN.  
SAND SET WITH MORTAR BORDER

HARDSCAPE SCHEDULE	
<b>PAVING</b>	
H1	DRIVEWAY CONCRETE PAVERS, TBD., SET IN RUNNING BOND FOLLOWING ROUNDABOUT, LIGHT GRAY COLOR
H2	DRIVEWAY CONCRETE PAVERS, TBD., SET IN RUNNING BOND FOLLOWING ROUNDABOUT, GRAY COLOR
H3	2' W CONCRETE BAND COLOR TBD.
H4	PEDESTRIAN WALKWAY PAVERS TBD., RUNNING BOND SET
H5	DECOMPOSED GRANITE SIZE AND COLOR TBD.
H6	N/A
H7	CONCRETE HEADER PER CIVIL ENGINEER
H8	ASPHALT PER CIVIL ENGINEER
H9	SIDEWALK PER CIVIL ENGINEER
<b>WALLS</b>	
W1	6"H CMU WALLS PER CIVIL ENGINEER - FINISH TBD
<b>COLUMNS</b>	
C1	6'-6" H CMU COLUMNS PER CIVIL ENGINEER - W/6X8X16 CMU BLOCK, WITH 3'-8"X2' CAP, FINISH TBD
C2	6'-6" H CMU COLUMNS PER CIVIL ENGINEER - W/6X8X16 CMU BLOCK, WITH 2"X2' CAP, FINISH TBD
<b>GATES</b>	
G1	4'W METAL PEDESTRIAN GATE
G2	21' W VEHICULAR METAL GATE
<b>AMENITIES</b>	
A1	CALL BOX, SEE ARCHITECTURAL DRAWINGS
A2	WATER FEATURE MAIN ENTRY
A3	PROJECT SIGNAGE



**IRONWOOD GOLF VILLAS**  
IRONWOOD GOLF VILLAS AT CAMELBACK  
COUNTRY CLUB SCOTTSDALE ROAD, PARADISE VALLEY

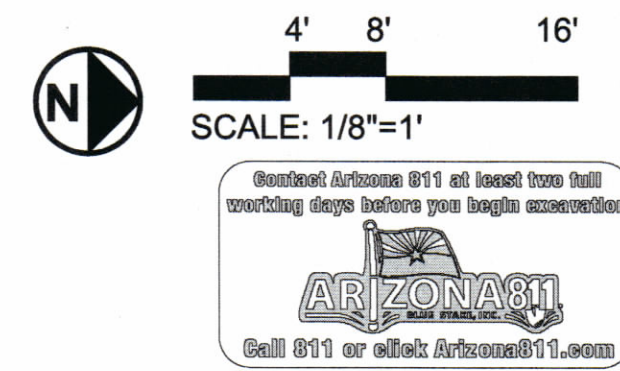
**REFINED GARDENS**  
DESIGN - BUILD - MAINTAIN  
7147 EAST RANCHO VISTA DRIVE SUITE 121  
SCOTTSDALE, AZ 85251  
480 588 7166 REFINEDGARDENS.COM

DATE  
**OCTOBER 2017**

REVISIONS  
28 AUGUST 2018

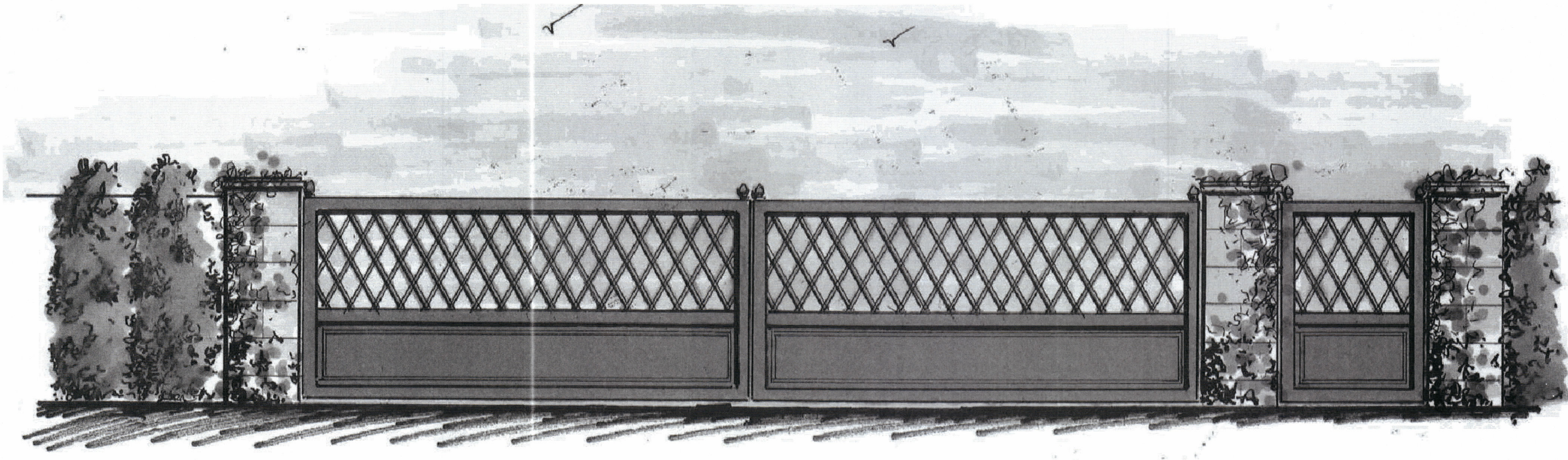
DRAWING:  
**HARDSCAPE PLAN SHEET**

**L-1 of 8**



Any unauthorized reproduction, reuse or publication of these plans by any method is prohibited without written consent from Refined Gardens or the owner. Unauthorized reproduction may be subjected to criminal liability.





ENTRY GATE



ENTRY WATER FEATURE

**IRONWOOD GOLF VILLAS**  
 IRONWOOD GOLF VILLAS AT CAMELBACK  
 COUNTRY CLUB SCOTTSDALE ROAD, PARADISE VALLEY

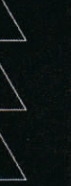
**REFINED GARDENS**  
 DESIGN - BUILD - MAINTAIN



7147 EAST RANCHO VISTA DRIVE SUITE 121  
 SCOTTSDALE, AZ 85251  
 480.588.7166 REFINEDGARDENS.COM

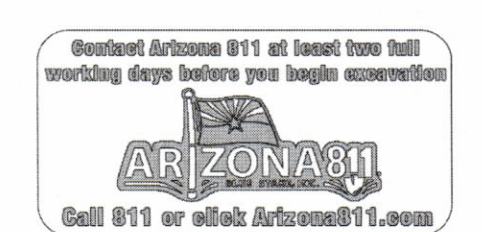
DATE  
 OCTOBER 2017

REVISIONS  
 28 AUGUST 2018



DRAWING:  
 CONCEPT DETAILS  
 SHEET

**L-2 of 8**



Any unauthorized reproduction, reuse or publication of these plans by any method is prohibited without written consent from Refined Gardens or the owner. Unauthorized reproduction may be subjected to criminal liability.



# IRONWOOD GOLF VILLAS

IRONWOOD GOLF VILLAS AT CAMELBACK  
COUNTRY CLUB SCOTTSDALE ROAD, PARADISE VALLEY

**REFINED GARDENS**  
DESIGN - BUILD - MAINTAIN

7147 EAST RANCHO VISTA DRIVE SUITE 121  
SCOTTSDALE, AZ 85251  
480 958 7166 REFINEDGARDENS.COM

DATE  
OCTOBER 2017

REVISIONS  
28 AUGUST 2018

DRAWING:  
PLANTING PLAN  
SHEET

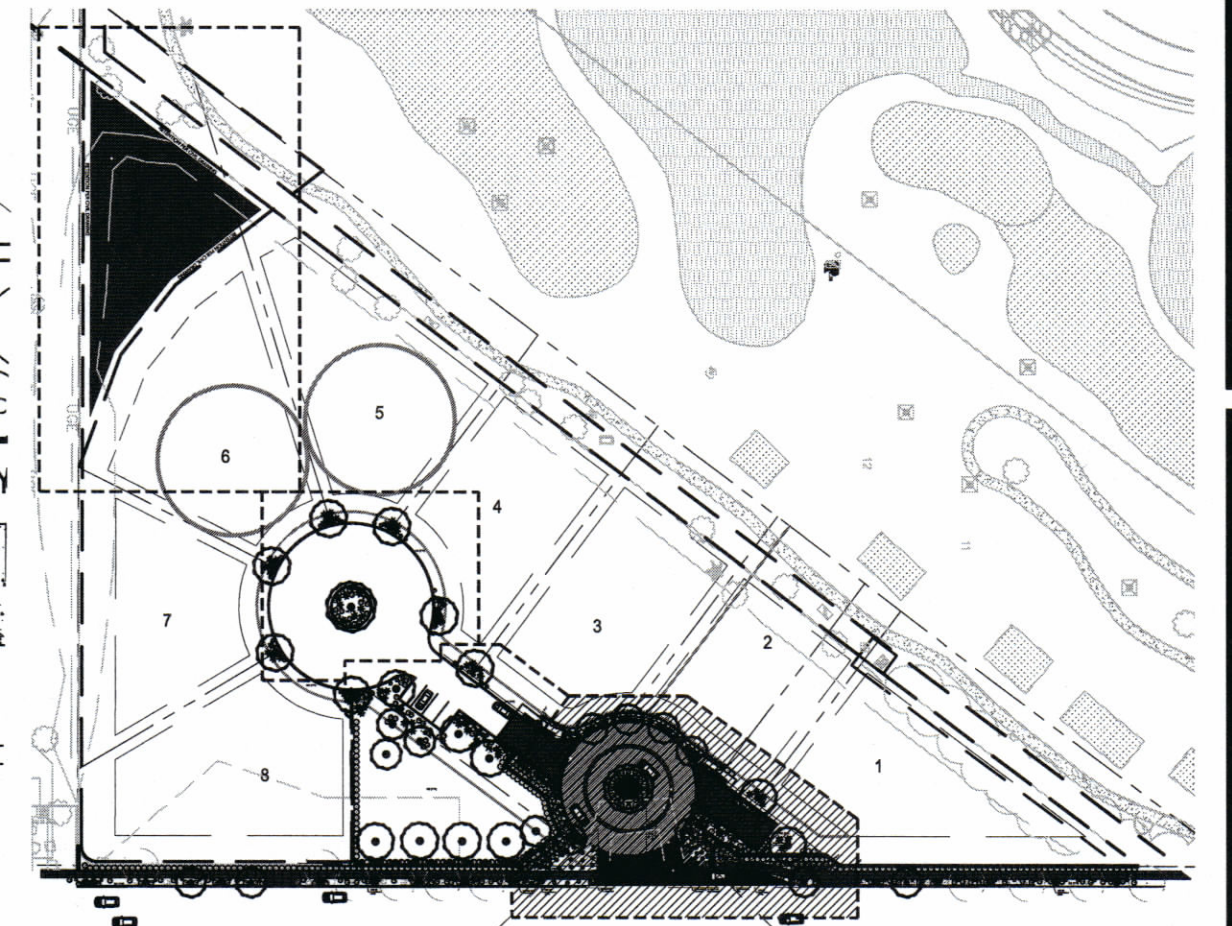
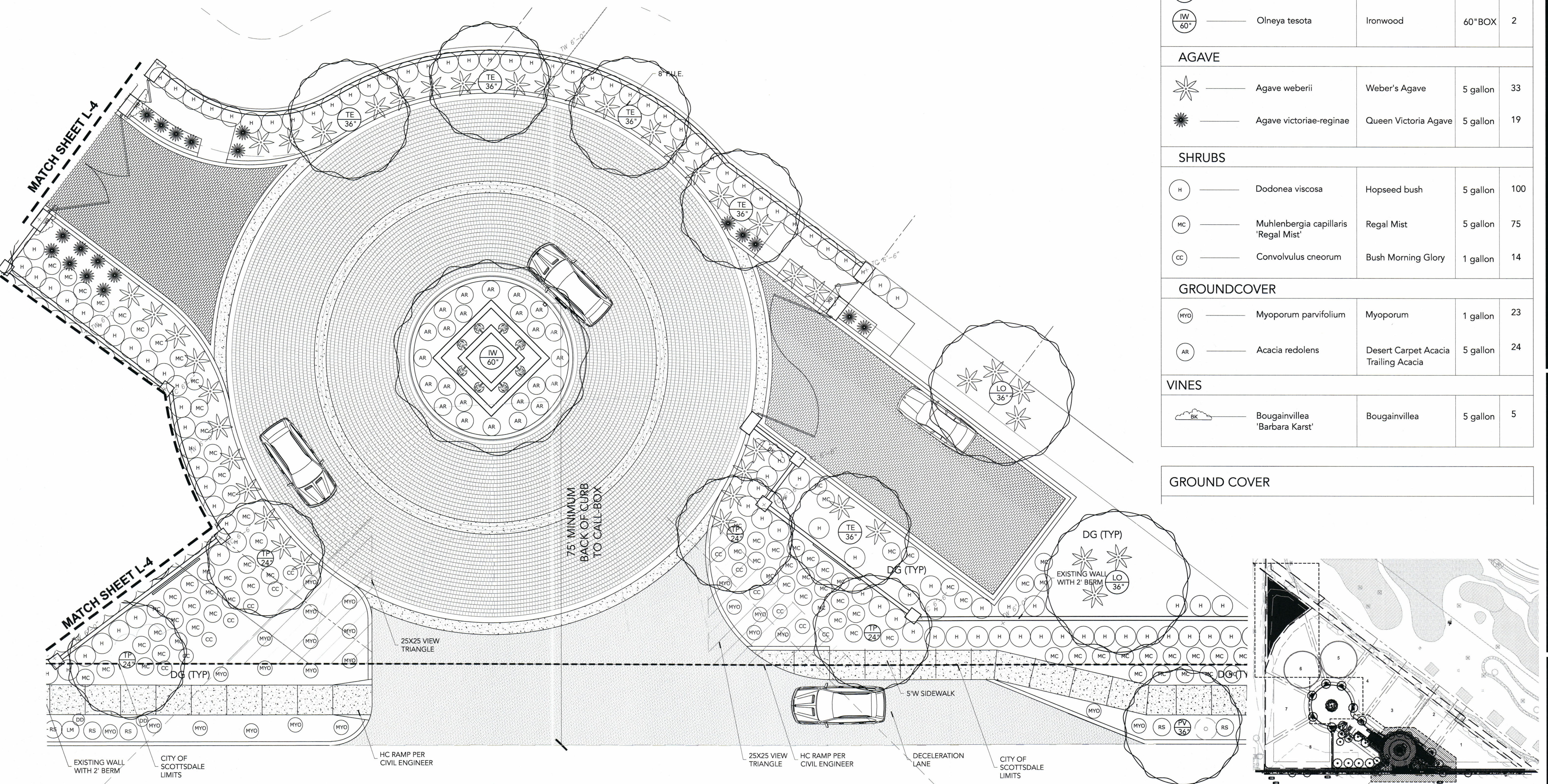
L-3 of 8

### PLANT LIST IRONWOOD GOLF VILLAS

ID	BOTANICAL	COMMON	SIZE	QTY.
<b>TREES</b>				
LO 36"	Quercus virginiana 'Heritage'	Southern Live Oak	36" BOX	16
TP 24"	Tipuana Tipu	Tipu	24" BOX	4
TE 36"	Ebanopsis ebano	Texas Ebony	36" BOX	6
IW 60"	Olneya tesota	Ironwood	60" BOX	2
<b>AGAVE</b>				
	Agave weberii	Weber's Agave	5 gallon	33
	Agave victoriae-reginae	Queen Victoria Agave	5 gallon	19
<b>SHRUBS</b>				
H	Dodonea viscosa	Hopseed bush	5 gallon	100
MC	Muhlenbergia capillaris 'Regal Mist'	Regal Mist	5 gallon	75
CC	Convolvulus cneorum	Bush Morning Glory	1 gallon	14
<b>GROUND COVER</b>				
MYO	Myoporum parvifolium	Myoporum	1 gallon	23
AR	Acacia redolens	Desert Carpet Acacia Trailing Acacia	5 gallon	24
<b>VINES</b>				
BK	Bougainvillea 'Barbara Karst'	Bougainvillea	5 gallon	5

### GROUND COVER

MYO	Myoporum parvifolium	Myoporum	1 gallon	23
AR	Acacia redolens	Desert Carpet Acacia Trailing Acacia	5 gallon	24



**SHEET KEY MAP**  
SCALE: NTS

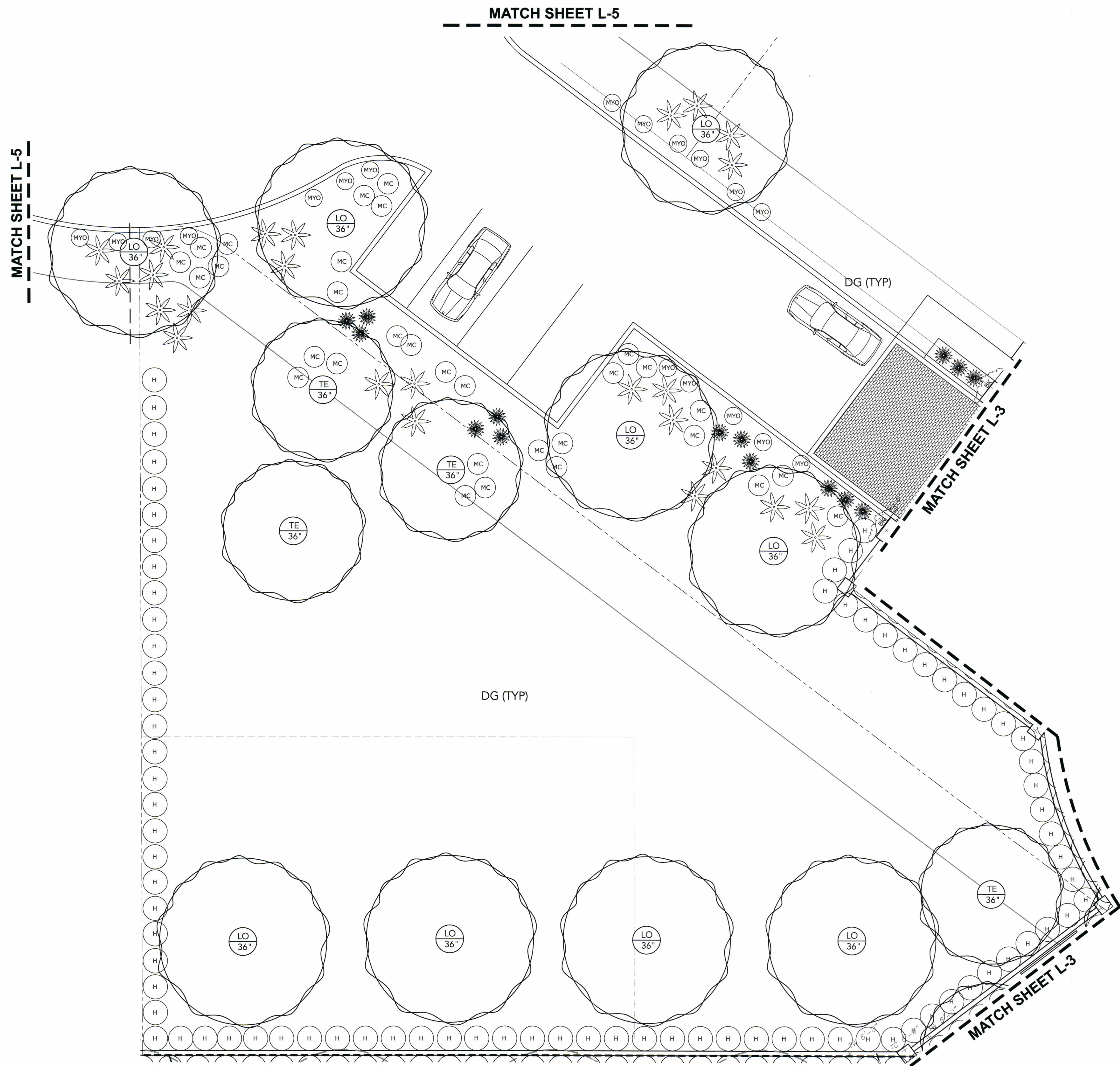
4' 8' 16'

SCALE: 1/8"=1'

ARIZONA811  
Call 811 or visit arizona811.com

Any unauthorized reproduction, reuse or publication of these plans by any method is prohibited without written consent from Refined Gardens or the owner. Unauthorized reproduction may be subjected to criminal liability.



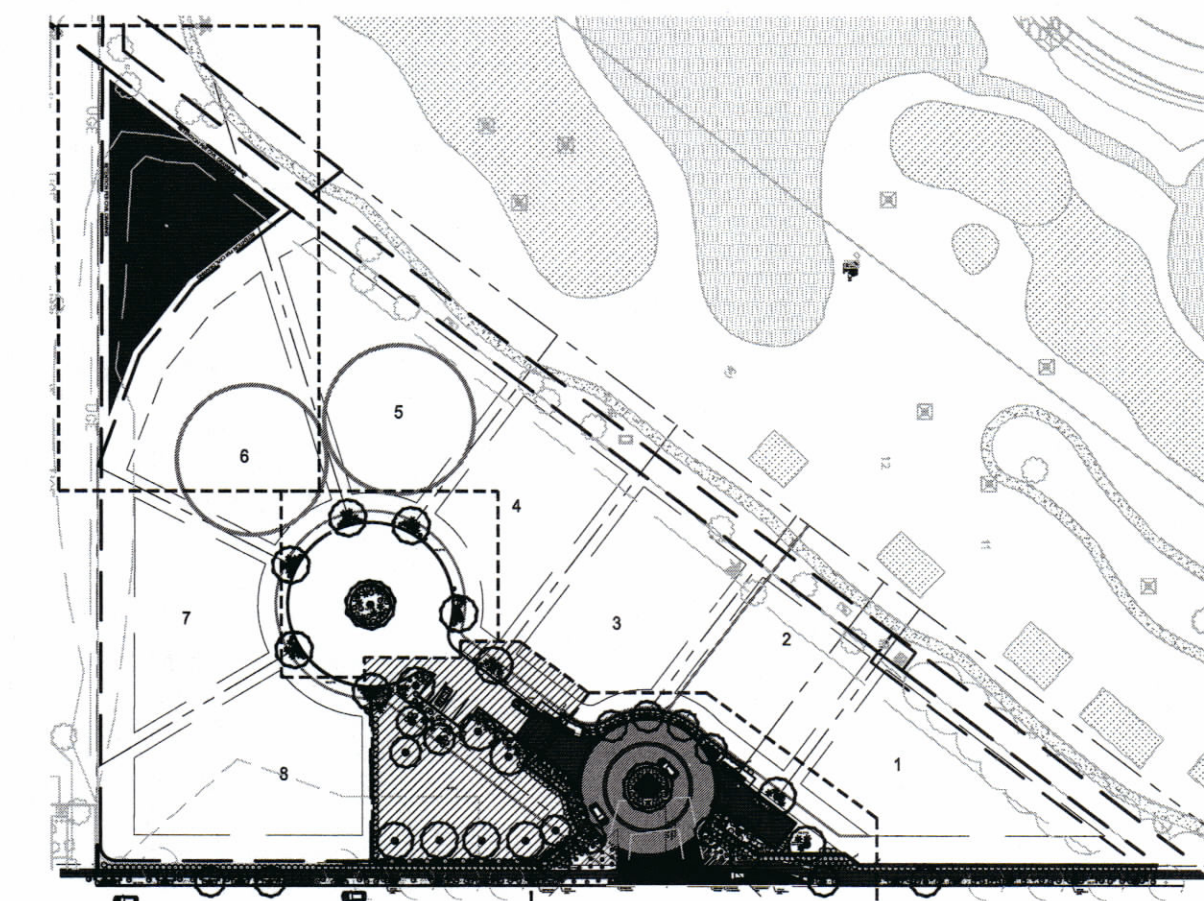


**PLANT LIST IRONWOOD GOLF VILLAS**

ID	BOTANICAL	COMMON	SIZE	QTY.
<b>TREES</b>				
LO 36"	Quercus virginiana 'Heritage'	Southern Live Oak	36" BOX	16
TP 24"	Tipuana Tipu	Tipu	24" BOX	4
TE 36"	Ebanopsis ebano	Texas Ebony	36" BOX	6
IW 60"	Olneya tesota	Ironwood	60" BOX	2
<b>AGAVE</b>				
(Star symbol)	Agave weberii	Weber's Agave	5 gallon	33
(Star symbol)	Agave victoriae-reginae	Queen Victoria Agave	5 gallon	19
<b>SHRUBS</b>				
H	Dodonea viscosa	Hopseed bush	5 gallon	100
MC	Muhlenbergia capillaris 'Regal Mist'	Regal Mist	5 gallon	75
CC	Convolvulus cneorum	Bush Morning Glory	1 gallon	14
<b>GROUND COVER</b>				
MYO	Myoporum parvifolium	Myoporum	1 gallon	23
AR	Acacia redolens	Desert Carpet Acacia Trailing Acacia	5 gallon	24
<b>VINES</b>				
BK	Bougainvillea 'Barbara Karst'	Bougainvillea	5 gallon	5

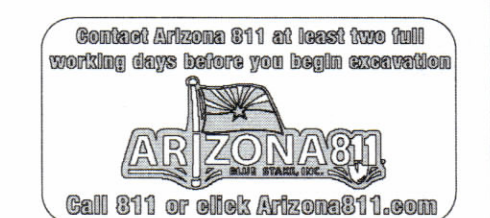
**GROUND COVER**

DG (TYP) Decomposed Granite for all landscape areas should be applied w/ minimum of 2" thickness Size and color TBD



**SHEET KEY MAP**  
SCALE: NTS

4' 8' 16'  
SCALE: 1/8"=1'



Any unauthorized reproduction, reuse or publication of these plans by any method is prohibited without written consent from Refined Gardens or the owner. Unauthorized reproduction may be subjected to criminal liability.

**IRONWOOD GOLF VILLAS**  
IRONWOOD GOLF VILLAS AT CAMELBACK  
COUNTRY CLUB SCOTSDALE ROAD, PARADISE VALLEY

**REFINED GARDENS**  
DESIGN - BUILD - MAINTAIN

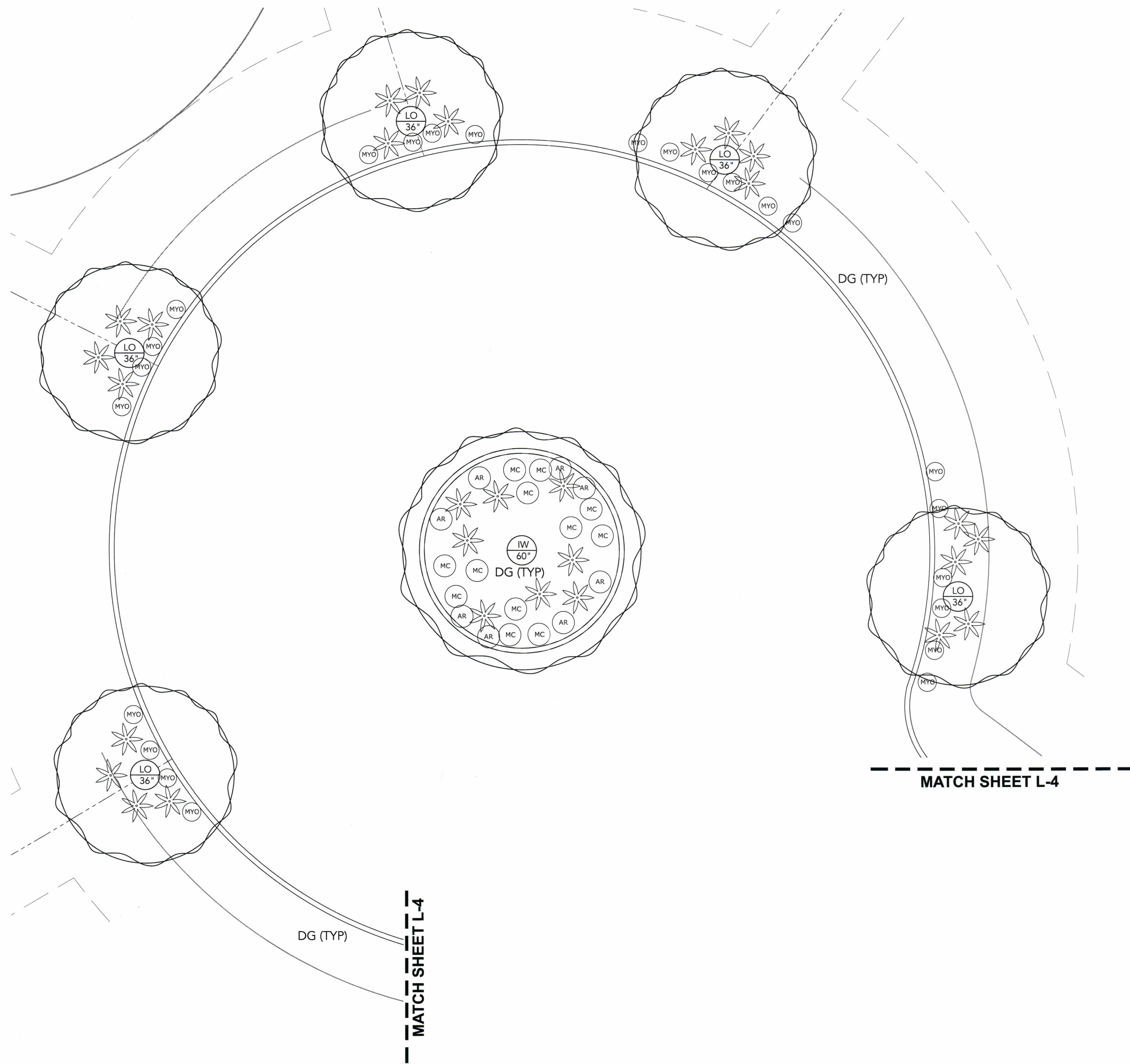


DATE  
OCTOBER 2017  
REVISIONS  
28 AUGUST 2018

DRAWING:  
PLANTING PLAN  
SHEET

**L-4 of 8**

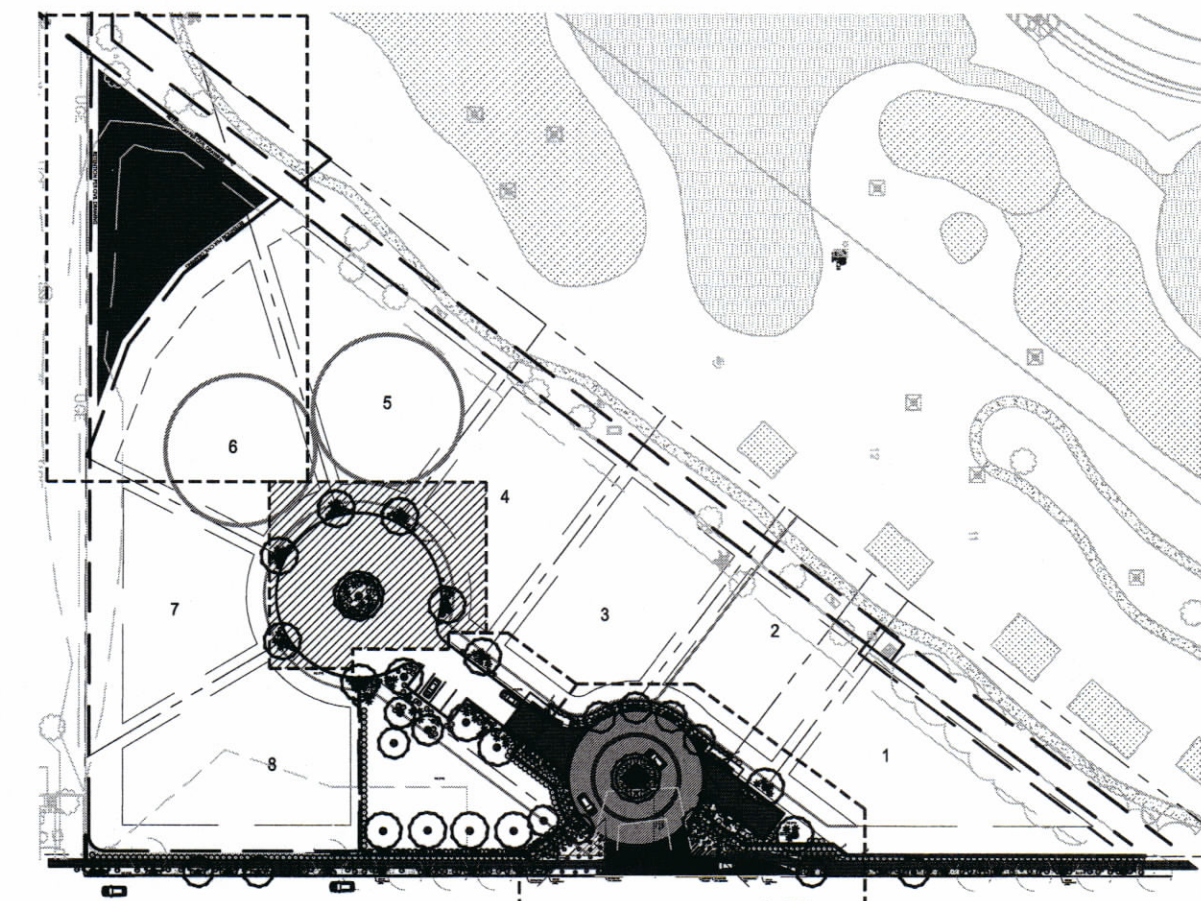




**PLANT LIST IRONWOOD GOLF VILLAS**

ID	BOTANICAL	COMMON	SIZE	QTY.
<b>TREES</b>				
LO 36"	Quercus virginiana 'Heritage'	Southern Live Oak	36" BOX	16
TP 24"	Tipuana Tipu	Tipu	24" BOX	4
TE 36"	Ebanopsis ebano	Texas Ebony	36" BOX	6
IW 60"	Olneya tesota	Ironwood	60" BOX	2
<b>AGAVE</b>				
	Agave weberii	Weber's Agave	5 gallon	33
	Agave victoriae-reginae	Queen Victoria Agave	5 gallon	19
<b>SHRUBS</b>				
H	Dodonea viscosa	Hopseed bush	5 gallon	100
MC	Muhlenbergia capillaris 'Regal Mist'	Regal Mist	5 gallon	75
CC	Convolvulus cneorum	Bush Morning Glory	1 gallon	14
<b>GROUND COVER</b>				
MYO	Myoporum parvifolium	Myoporum	1 gallon	23
AR	Acacia redolens	Desert Carpet Acacia Trailing Acacia	5 gallon	24
<b>VINES</b>				
BK	Bougainvillea 'Barbara Karst'	Bougainvillea	5 gallon	5

GROUND COVER		
DG (TYP)	Decomposed Granite for all landscape areas should be applied w/ minimum of 2" thickness	Size and color TBD



**SHEET KEY MAP**  
SCALE: NTS

4' 8' 16'

**SCALE: 1/8"=1'**

ARIZONA 311

**IRONWOOD GOLF VILLAS**  
IRONWOOD GOLF VILLAS AT CAMELBACK  
COUNTRY CLUB SCOTTSDALE ROAD, PARADISE VALLEY

**REFINED GARDENS**  
DESIGN - BUILD - MAINTAIN

7147 EAST RANCHO VISTA DRIVE SUITE 121  
SCOTTSDALE, AZ 85251  
480 588 7168 REFINEDGARDENS.COM

DATE  
**OCTOBER 2017**

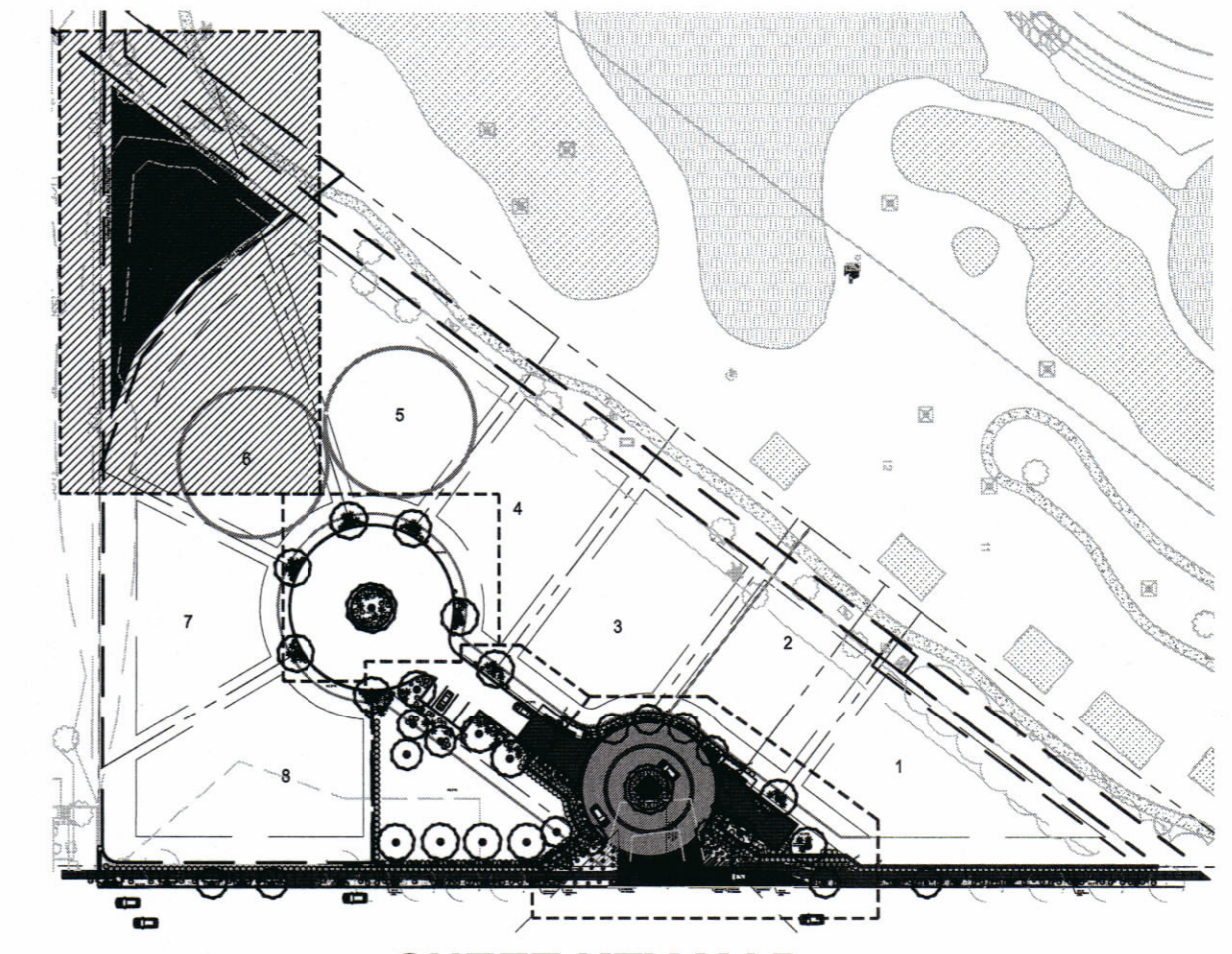
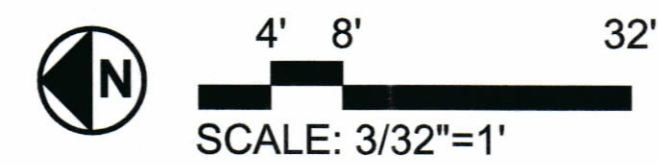
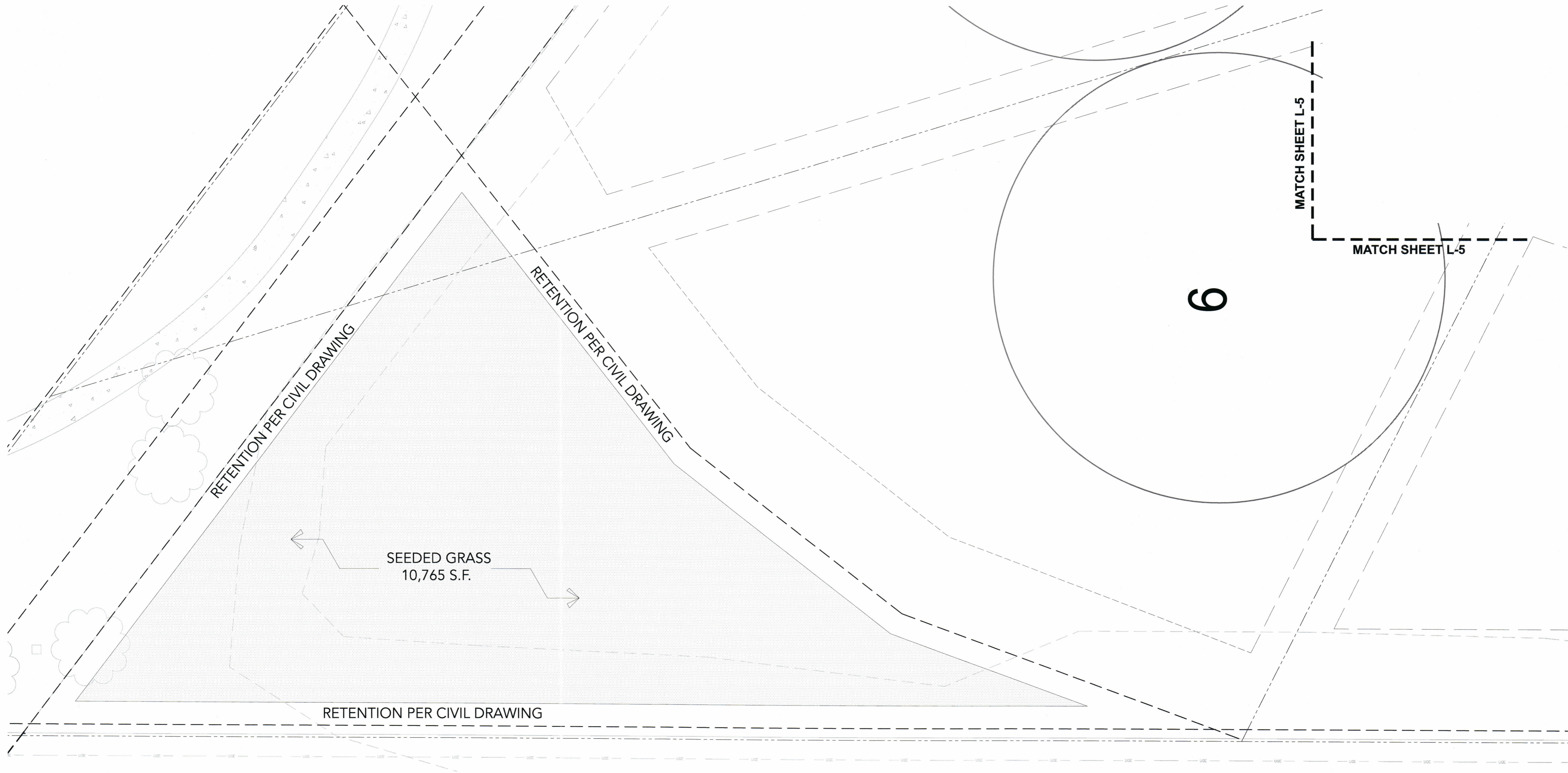
REVISIONS  
28 AUGUST 2018

DRAWING:  
**PLANTING PLAN SHEET**

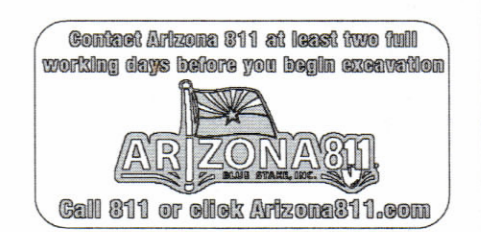
**L-5 of 8**

Any unauthorized reproduction, reuse or publication of these plans by any method is prohibited without written consent from Refined Gardens or the owner. Unauthorized reproduction may be subjected to criminal liability.





**SHEET KEY MAP**  
SCALE: NTS

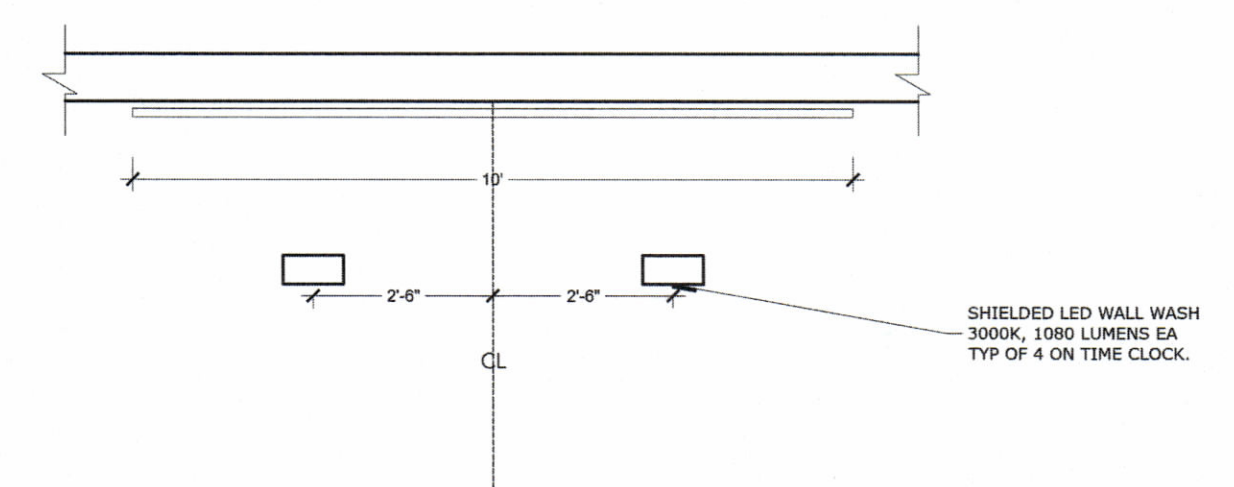
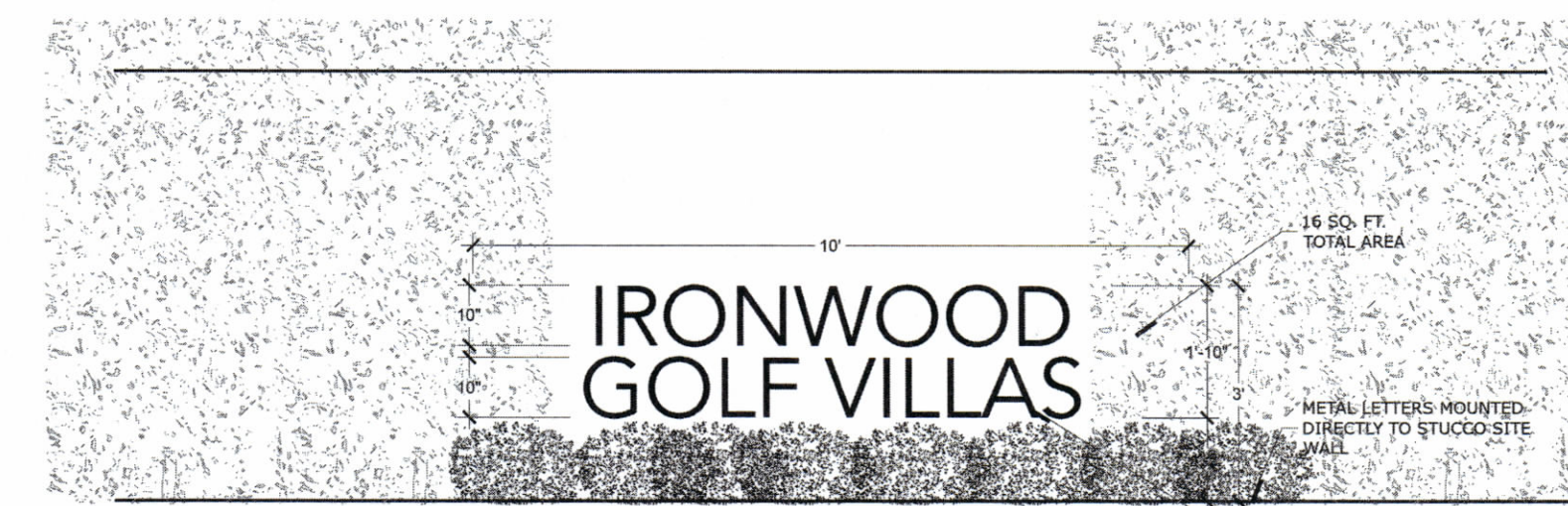
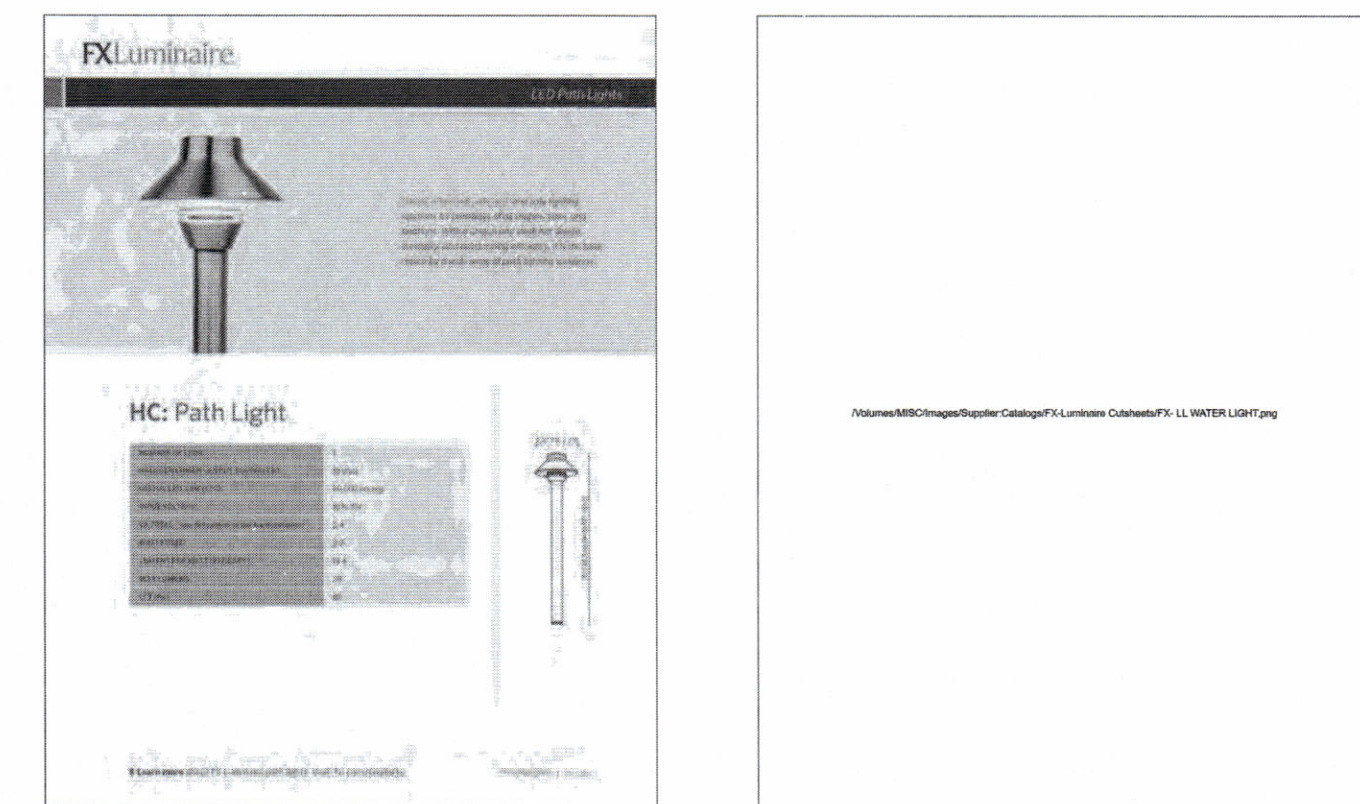
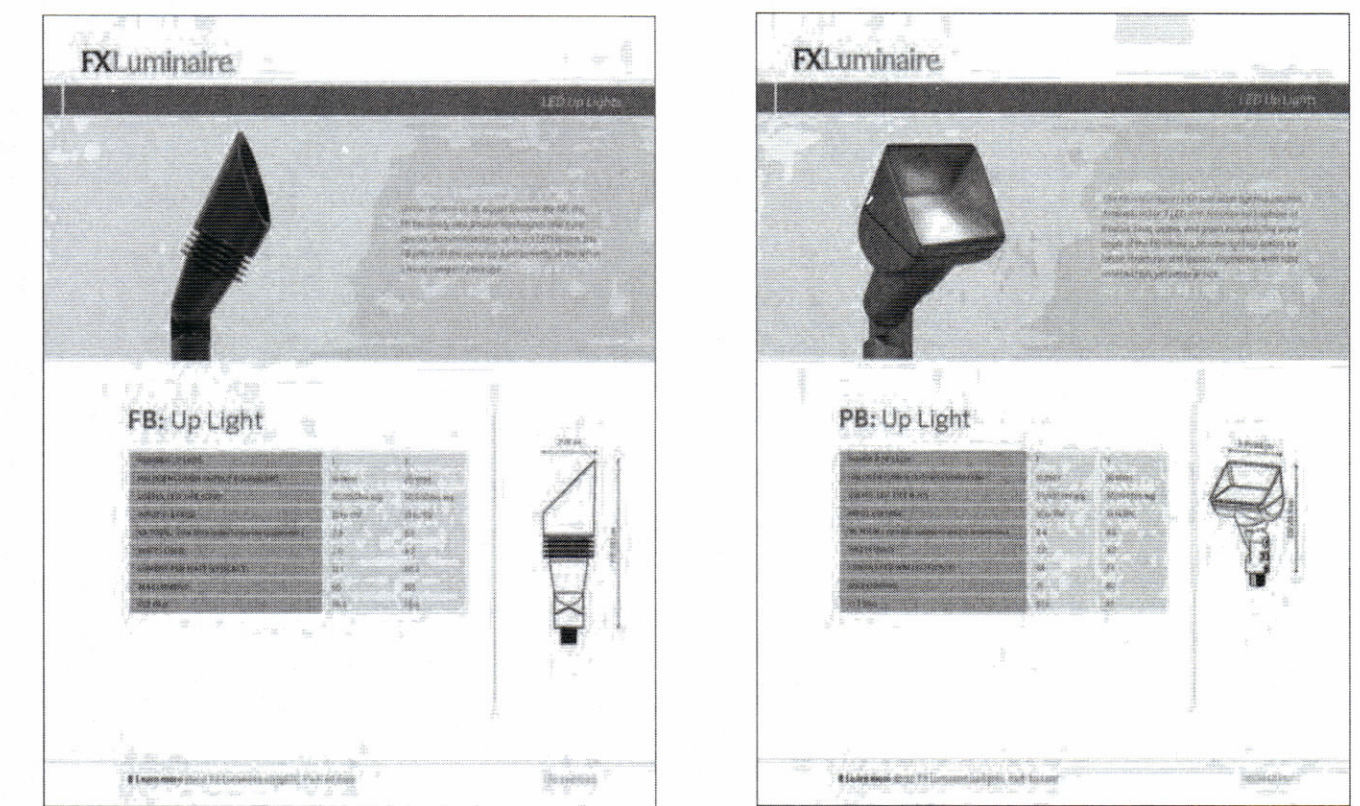
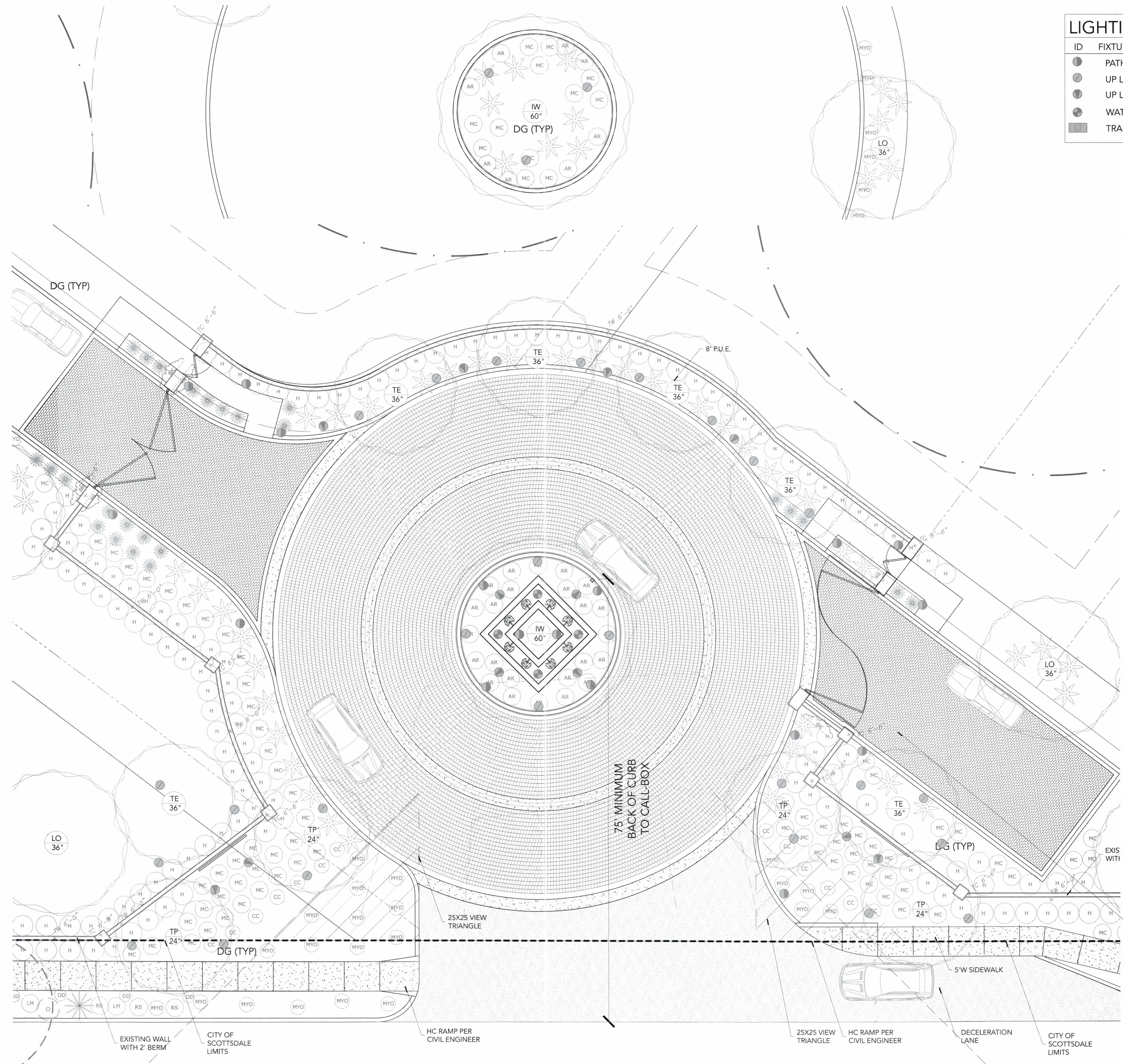


Any unauthorized reproduction, reuse or publication of these plans by any method is prohibited without written consent from Refined Gardens or the owner. Unauthorized reproduction may be subjected to criminal liability.

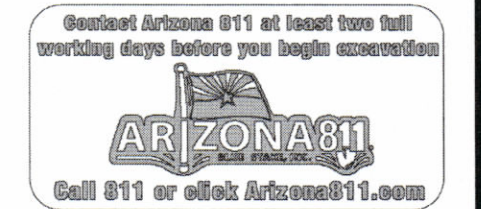


# LIGHTING SCHEDULE

ID	FIXTURE NAME	MANUFACTURE	MODEL	FINISH	TYPE	QTY
●	PATH LIGHT- 18" riser	FX LUMINAIRE	* HC- 18" petite top & riser	BRONZE METALIC	3 LED	17
●	UP LIGHT	FX LUMINAIRE	* FB	BRONZE METALIC	3 LED	26
●	UP LIGHT- WASH	FX LUMINAIRE	* PB	BRONZE METALIC	3 LED	12
●	WATER LIGHT	FX LUMINAIRE	* LL	NATURAL BRASS	1 LED	4
■	TRANSFORMER	FX LUMINAIRE	PX- 600W			



## PROJECT SIGNAGE



**IRONWOOD GOLF VILLAS**  
 IRONWOOD GOLF VILLAS AT CAMELBACK  
 COUNTRY CLUB SCOTTSDALE ROAD, PARADISE VALLEY

**REFINED GARDENS**  
 DESIGN - BUILD - MAINTAIN

DATE  
 OCTOBER 2017

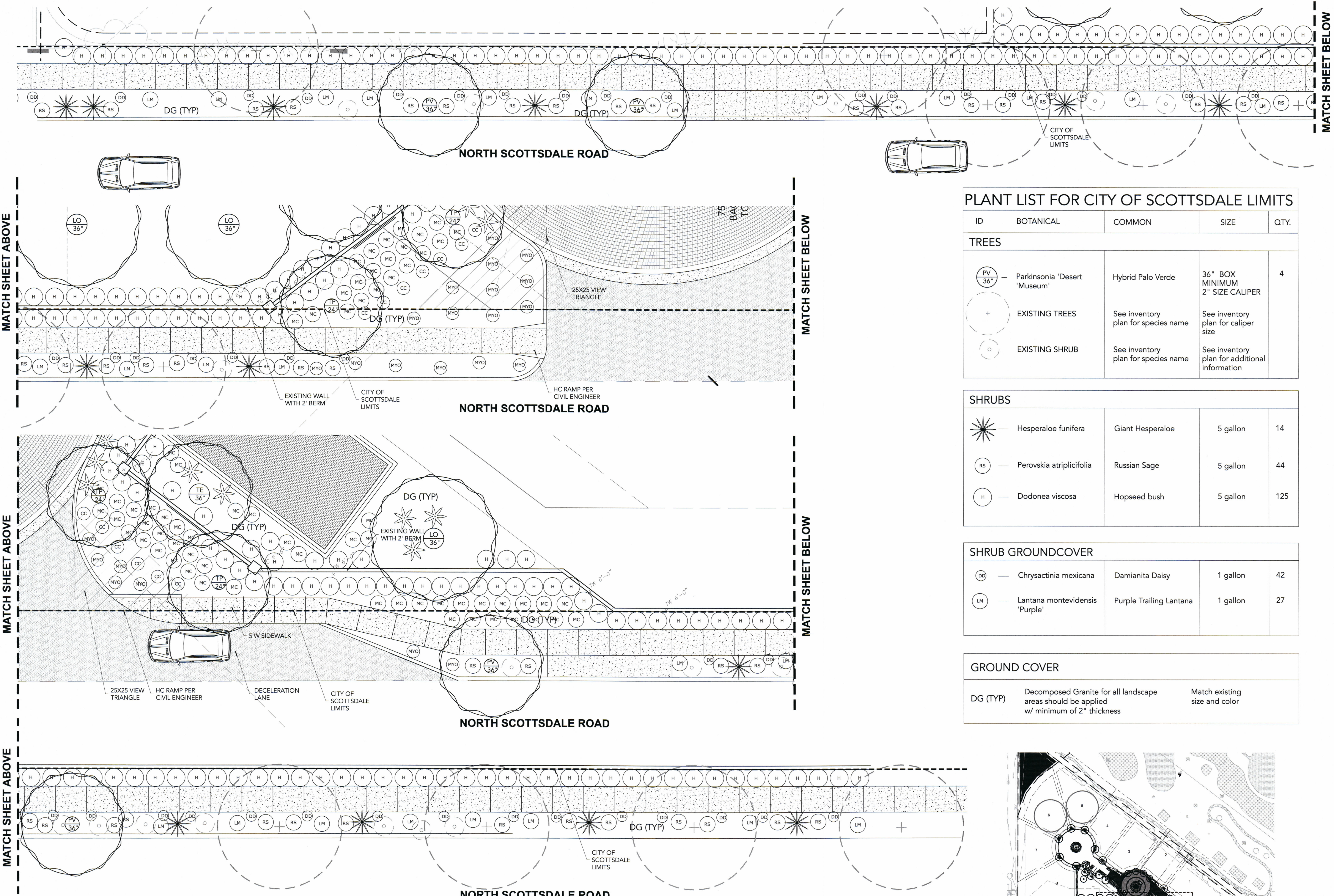
REVISIONS  
 28 AUGUST 2018

DRAWING:  
 LIGHTING PLAN  
 SHEET

**L-7 of 8**

Any unauthorized reproduction, reuse or publication of these plans by any method is prohibited without written consent from Refined Gardens or the owner. Unauthorized reproduction may be subjected to criminal liability.





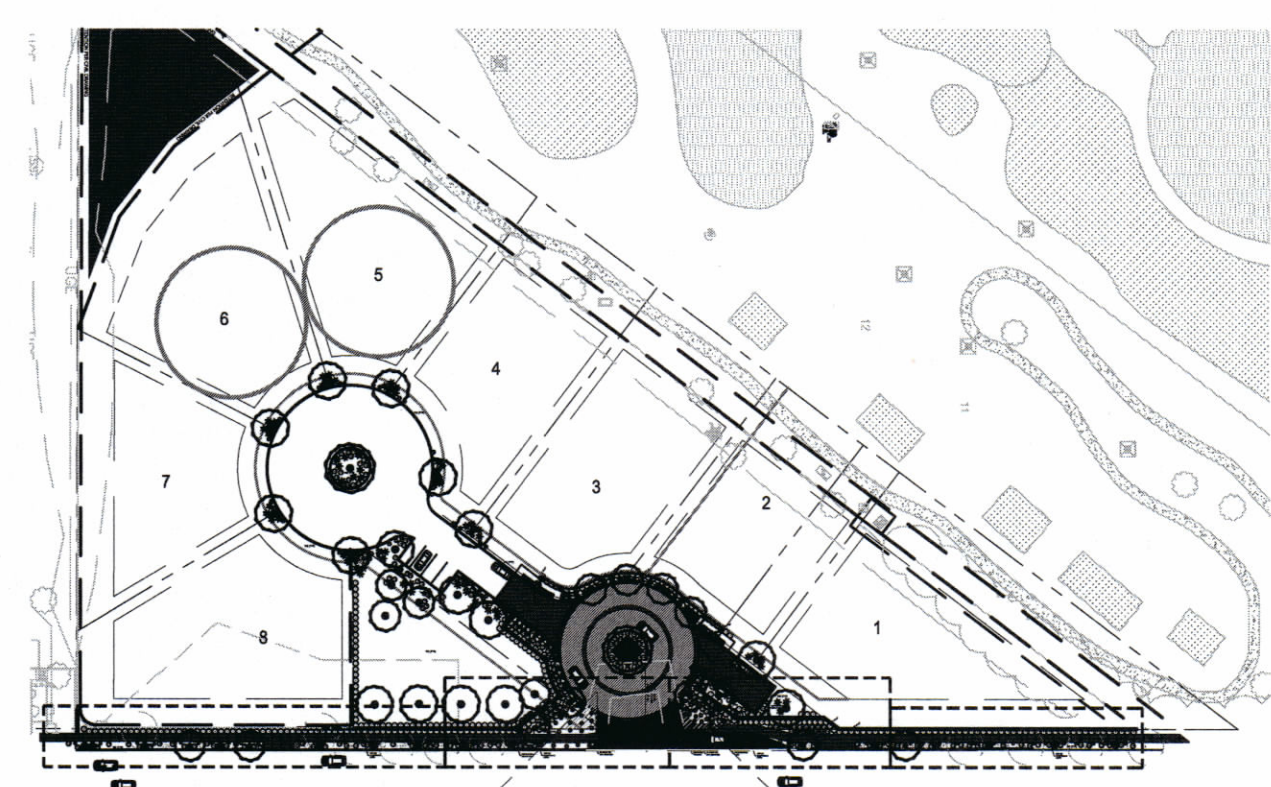
**PLANT LIST FOR CITY OF SCOTTSDALE LIMITS**

ID	BOTANICAL	COMMON	SIZE	QTY.
<b>TREES</b>				
PV 36"	Parkinsonia 'Desert Museum'	Hybrid Palo Verde	36" BOX MINIMUM 2" SIZE CALIPER	4
+	EXISTING TREES	See inventory plan for species name	See inventory plan for caliper size	
o	EXISTING SHRUB	See inventory plan for species name	See inventory plan for additional information	

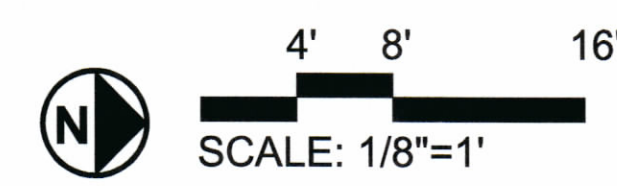
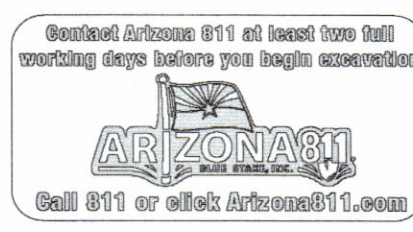
<b>SHRUBS</b>				
*	Hesperaloe funifera	Giant Hesperaloe	5 gallon	14
RS	Perovskia atriplicifolia	Russian Sage	5 gallon	44
H	Dodonea viscosa	Hopseed bush	5 gallon	125

<b>SHRUB GROUNDCOVER</b>				
DD	Chrysactinia mexicana	Damianita Daisy	1 gallon	42
LM	Lantana montevidensis 'Purple'	Purple Trailing Lantana	1 gallon	27

<b>GROUND COVER</b>		
DG (TYP)	Decomposed Granite for all landscape areas should be applied w/ minimum of 2" thickness	Match existing size and color



**SHEET KEY MAP**  
SCALE: NTS



**IRONWOOD GOLF VILLAS**  
IRONWOOD GOLF VILLAS AT CAMELBACK  
COUNTRY CLUB SCOTTSDALE ROAD, PARADISE VALLEY

**REFINED GARDENS**  
DESIGN - BUILD - MAINTAIN  
7147 EAST RANCHO VISTA DRIVE SUITE 121  
SCOTTSDALE, AZ 85251  
480.888.7186 REFINEDGARDENS.COM

DATE  
**OCTOBER 2017**

REVISIONS  
28 AUGUST 2018

DRAWING:  
**CITY OF SCOTTSDALE  
PLANTING PLAN  
SHEET**

**L-1**

Any unauthorized reproduction, reuse or publication of these plans by any method is prohibited without written consent from Refined Gardens or the owner. Unauthorized reproduction may be subjected to criminal liability.