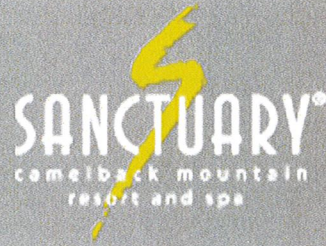
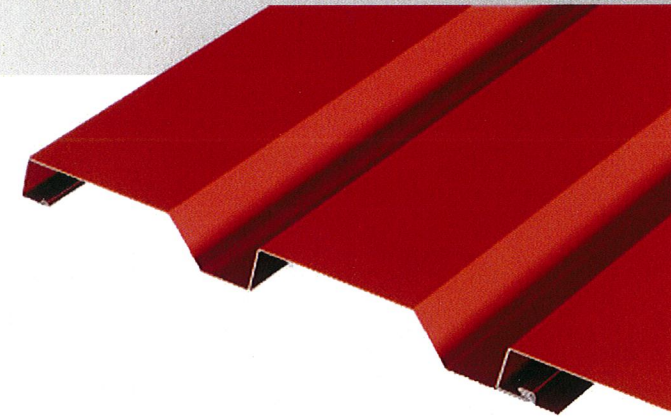


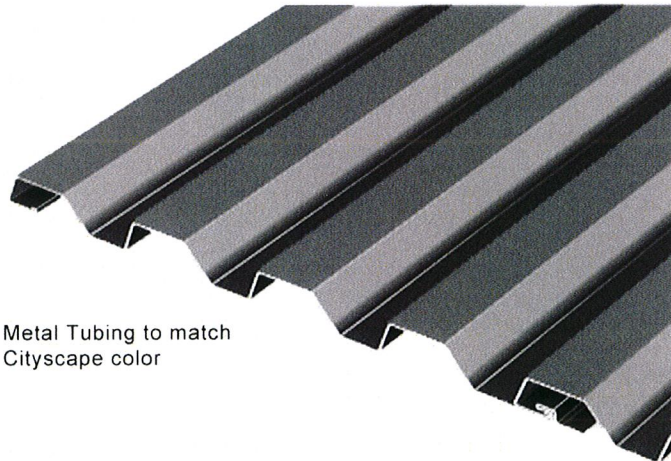
Materials Samples and Color Pallate for SANCTUARY INTERSTITIAL KEYS & POOL AREA SUP Amendment 17-057



The Sanctuary Resort & Spa on Camelback Mountain



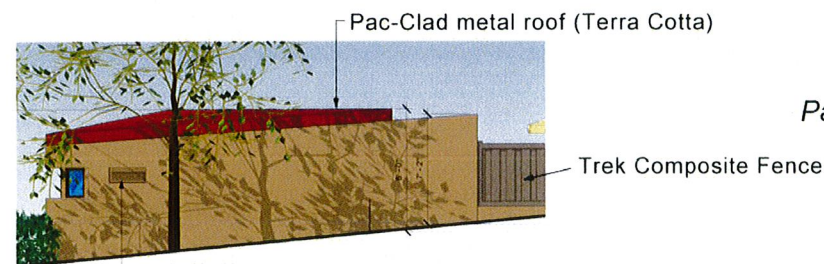
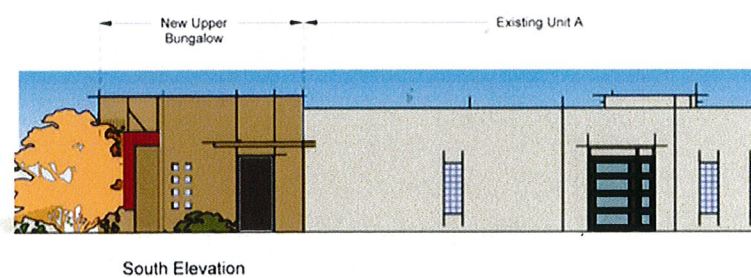
metal siding- wide pattern
Pac-Clad Highline C2



metal siding- narrow pattern
Pac-Clad HWP

Metal Tubing to match Cityscape color

Typ Mech Enclosure Typ Mech Enclosure
New B Infill Bungalow New A Infill Bungalow Typ Mech Enclosure
New Lower End Bungalow



Snack Bar & Pool Area

new stucco

Sherwin Williams 6145
Thatch Brown
LRV=17

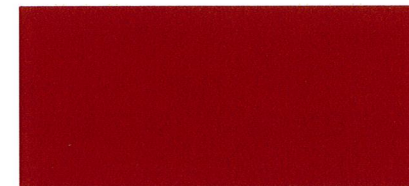


existing stucco

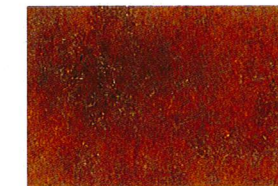
Whippoorwill
LRV=63



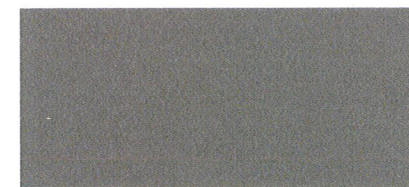
Pac-Clad metal siding
Terra Cotta
LRV=10



rusted metal sign
LRV approx equivalence=11



Pac-Clad metal siding
Cityscape
LRV=21



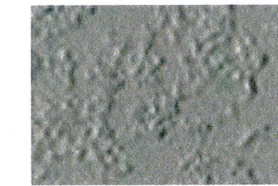
Fleetwood Aluminum Doors
Martin Statuary Bronze
Kynar 500 Finish

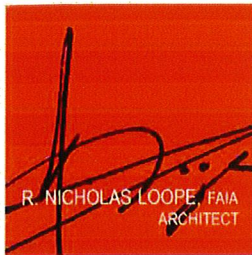


Trek Composite Fencing
Winchester Gray
LRV=19



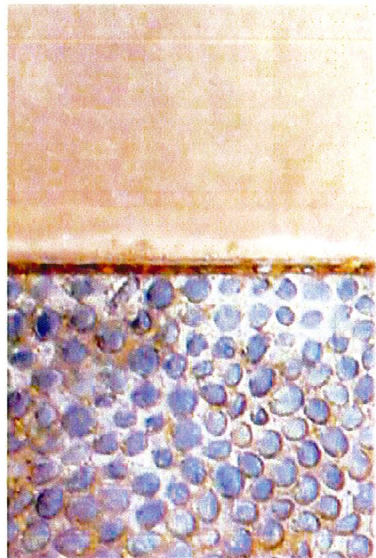
SunWest Kool Deck
Dove Gray
LRV=30





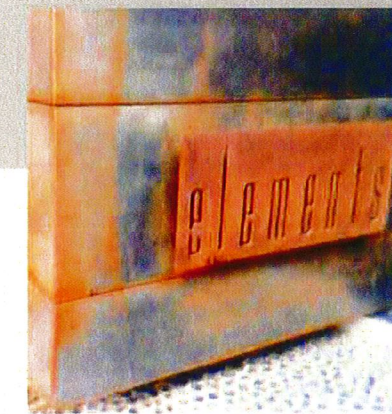
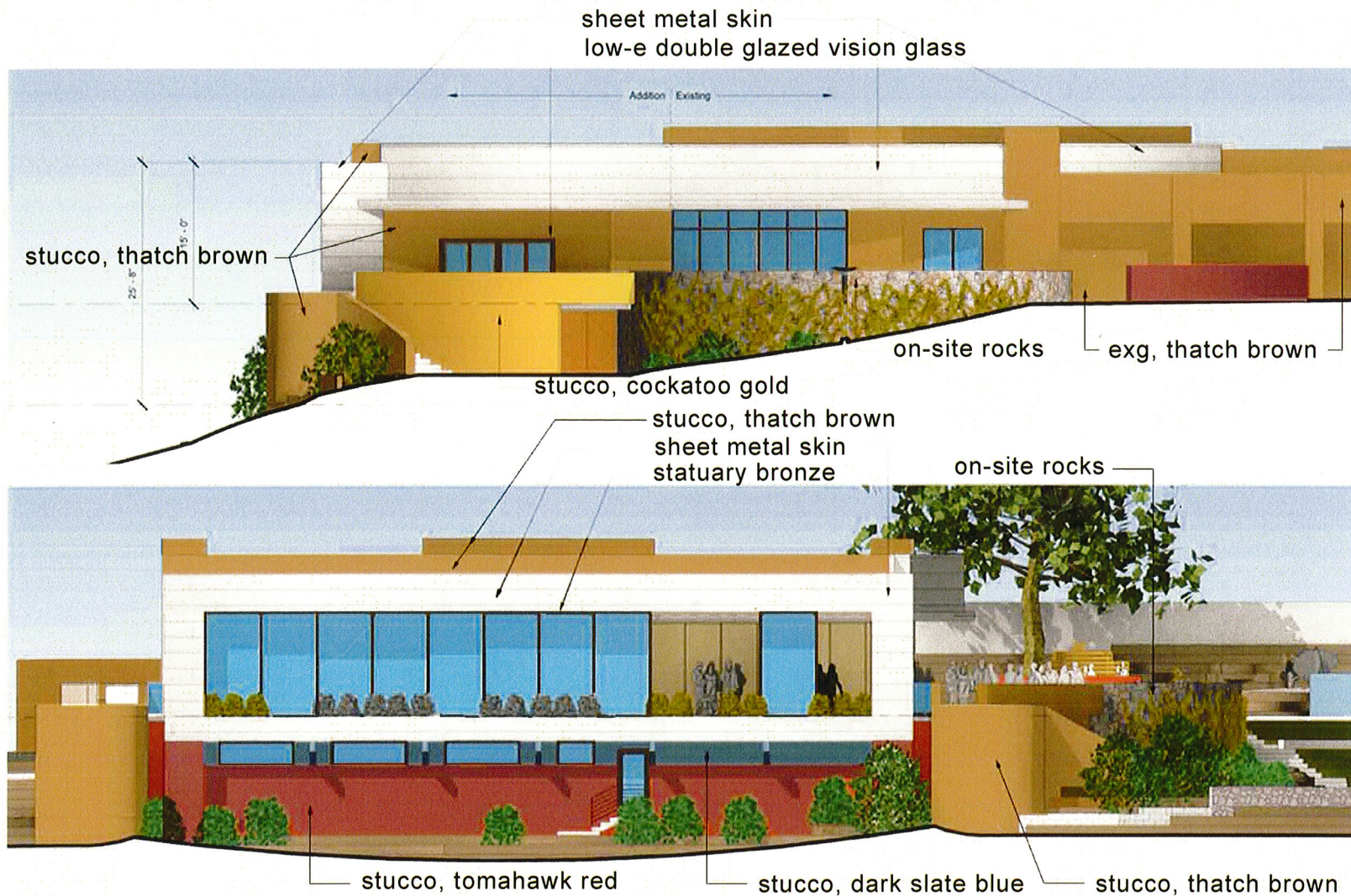
Materials Samples and Color Pallate for THE VIEWS CONFERENCE CENTER EXPANSION SUP Amendment 17-057

The Sanctuary Resort & Spa on Camelback Mountain



hardscape paving surfaces
black tile, black pebble
broomed finish concrete

on-site rocks
stone veneer
natural



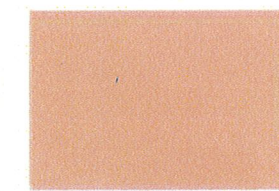
Element Metals
unpolished sheet metal skin
LRV=31 (oxidized patina shown above
(color equivalency to Dunn Edwards Walrus))



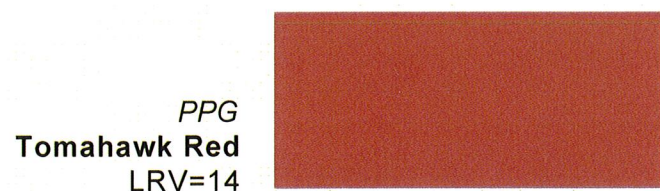
Dunn Edwards
Walrus DE6368
LRV=31
(color equivalency for sheet metal skin)



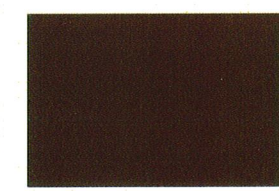
PPG
Cockatoo Gold
LRV=22



Pro Tech EC-100
Brown Owl
LRV=33
foam roof coating



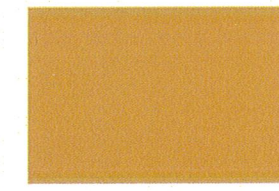
PPG
Tomahawk Red
LRV=14



Fleetwood Aluminum Doors
Martin Statuary Bronze
Kynar 500 Finish



Sherwin Williams
Dark Blue Slate
LRV=8



existing bldg color to be matched:
Sherwin Williams 6145
Thatch Brown
LRV=17