

PROPOSED SIGNAGE DATA					
NUMBER	LOCATION	TYPE OF SIGNAGE	QUANTITY	DIMENSIONS	AREA (IN SQ.FT.)
1	Entry Driveways	Monument Sign	2	8' X 10'-2"	81.33
2	Bldgs A and F	Buildings Directories	2	4'-6" X 4'	18
3	Bldg F	Building sign	1	2' X 20'	40
4	Bldg D (or Bldg E)	Building sign	1	2' X 20'	40
5	Bldg C (or Bldg B)	Building sign	1	2' X 20'	40
6	Phase III Plaza	Building Directory	1	5' X 15'	75
7	Bldg A	Building sign	1	2' X 20'	40
8	Suites	Typical Suite Sign	26	2' X 3'	6

- LEGEND**
- Proposed location of building signs.
- - - → Potential location of building signage on Buildings C and E. Total number of building signs shall remain 4. (refer table 'Proposed Signage Data' for further details)

SIGNAGE PLAN

orcutt | winslow

2929 n central ave
eleventh floor
phoenix arizona 85012

602.257.1764 t
602.257.9029 f

www.owp.com

REGISTERED ARCHITECT
NOT FOR
CONSTRUCTION
Arizona, U.S.A.

© 2017 this (hard copy or electronic) drawing is an instrument of service and the property of the OrcuttWinslow Partnership and shall remain their property. The design professional shall not be responsible for any alterations, modifications or additions made to this drawing by any party other than this design professional. Use of this drawing shall be limited to the original use for which it was prepared and publication thereof is expressly limited to such use, in whole or in part, without the written consent of the design professional. Any reuse or reproduction, in whole or in part, without the written consent of the design professional, is expressly prohibited. The design professional shall not be responsible for any errors or omissions in this drawing, and it may not be used for any other purpose without the design professional's written consent. Publication by any method in whole or in part is prohibited without the written permission of the design professional. Any information obtained or conclusions derived from this drawing shall be at the user's sole risk.

mountain view medical center, LLC

Mountain View Medical
Center Redevelopment

10555, 10565, 10575, 10585, 10595, 10599 N. Tatum Blvd , Paradise Valley,
Arizona 85253

CLIENT CONTACT

mountain view medical center, LLC
2944 N. 44th St.
Phoenix, AZ 85018

602.802.8106 t

PROJECT NO.
2018_041

DATE OF ISSUE
02.07.2019

REVISION NO.

1
2
3
4

DATE
09.26.2018
11.01.2018
01.22.2019
02.19.2019

PROJECT TEAM
John Cantrell

DRAWN BY
BD

PROJECT PHASE
SUP major amendment
Review #4

SHEET CONTENTS
signage plan

SHEET NO.
05.3.1

2929 n central ave
eleventh floor
phoenix arizona 85012

602.257.1764 t
602.257.9029 f

www.owp.com



2017 This is a (hand-crafted or electronic) drawing is an instrument of service and the property of the Client/Windows Partnership and shall remain their property. The design professional shall not be responsible for any alterations, modifications or additions made to this drawing by any party other than the design professional. Use of this drawing shall be limited to the original site for the use or reproduction. Unless otherwise agreed in writing, design professional reserves all copyright or other proprietary interest in this drawing, and it may not be re-used for any other purpose without the design professional's written consent. Publication by any method in whole or part without the written consent of the design professional is prohibited. Any information obtained or derived from this drawing is not to be stored, used, or reproduced in any form without the written consent of the design professional.

mountain view medical center, LLC
**Mountain View Medical
 Center Redevelopment**
 10555, 10565, 10575, 10585, 10595, 10599 N. Tatum Blvd , Paradise Valley,
 Arizona 85253

CLIENT CONTACT

mountain view 602.802.8106 t
medical center, LLC
2944 N. 44th St.
Phoenix, AZ 85018

PROJECT NO. DATE OF ISSUE

2018_041 02.07.2019

REVISION NO. DATE

1 09.26.2018

11.01.2018

01 22 2019

△

PROJECT TEAM DRAWN BY

John Cantrell BD

PROJECT PHASE

SUP major amendment
Review #4

SHEET CONTENTS

phase I signage plan

SHEET NO.

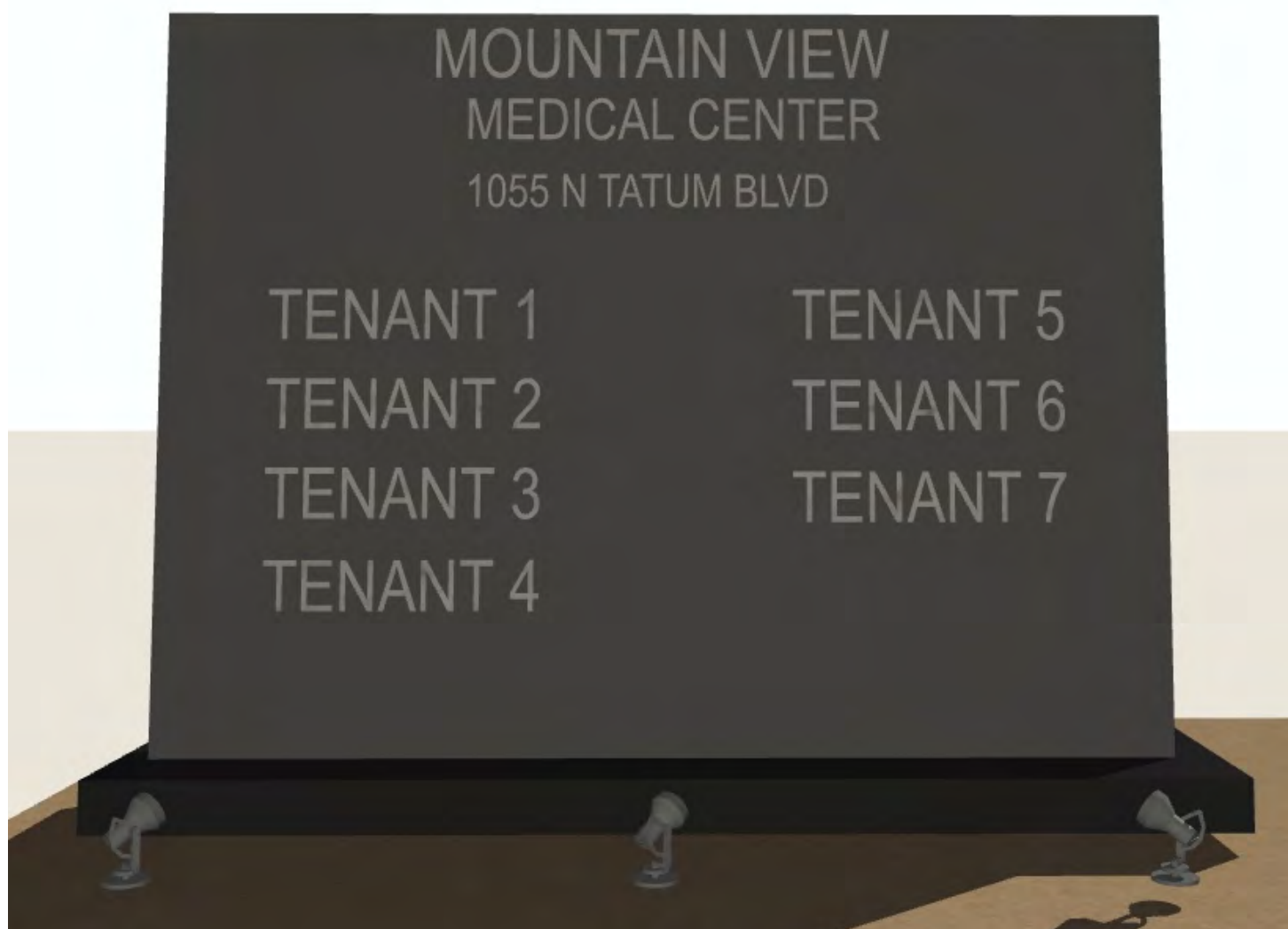
05.3.2

3.



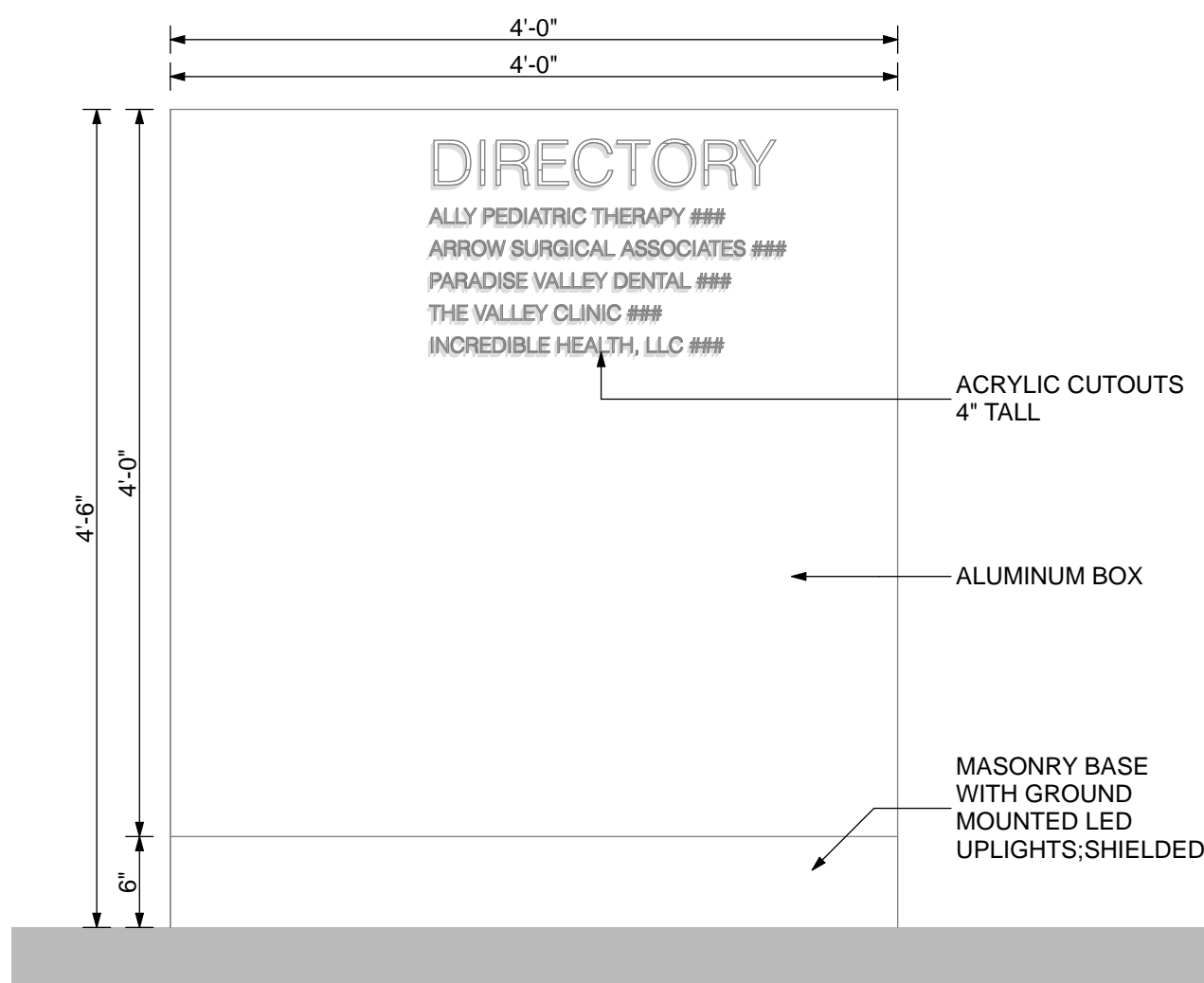
3 BLDG SIGN FOR BLDG F

1.



1 MONUMENT SIGN (design to change, not the size)

2.



2 DIRECTORY FOR BLDG F



SHEA BOULEVARD

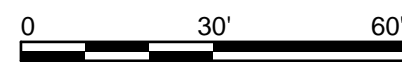
BLDG F
1-STORY
18,697 SF

NEW 3' H FENCE WALL

DROP-OF

PE

SIGNS 1,2,3 LOCATION





4. BLDG SIGN ON BLDG D



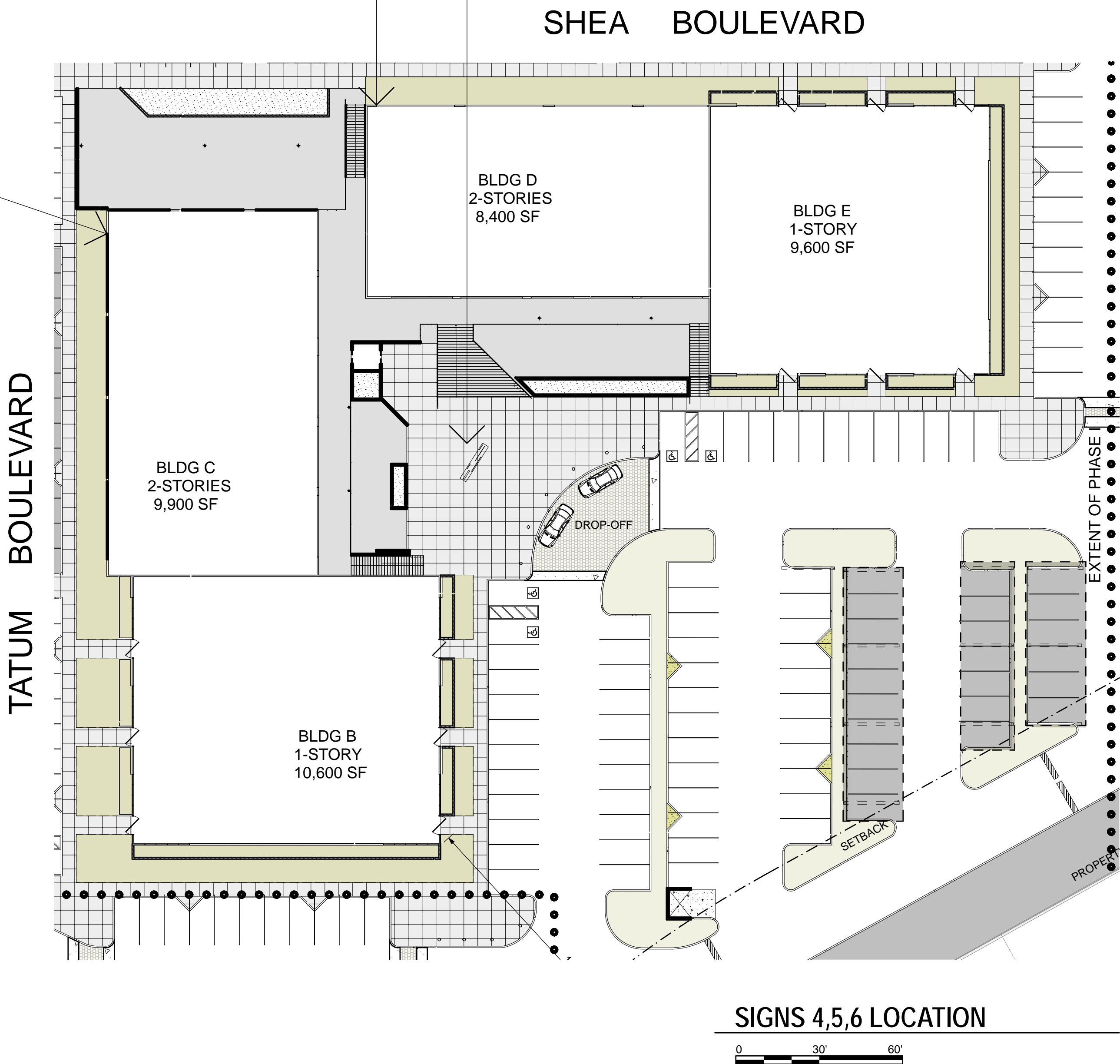
6. BLDGS B,C,D,E DIRECTORY



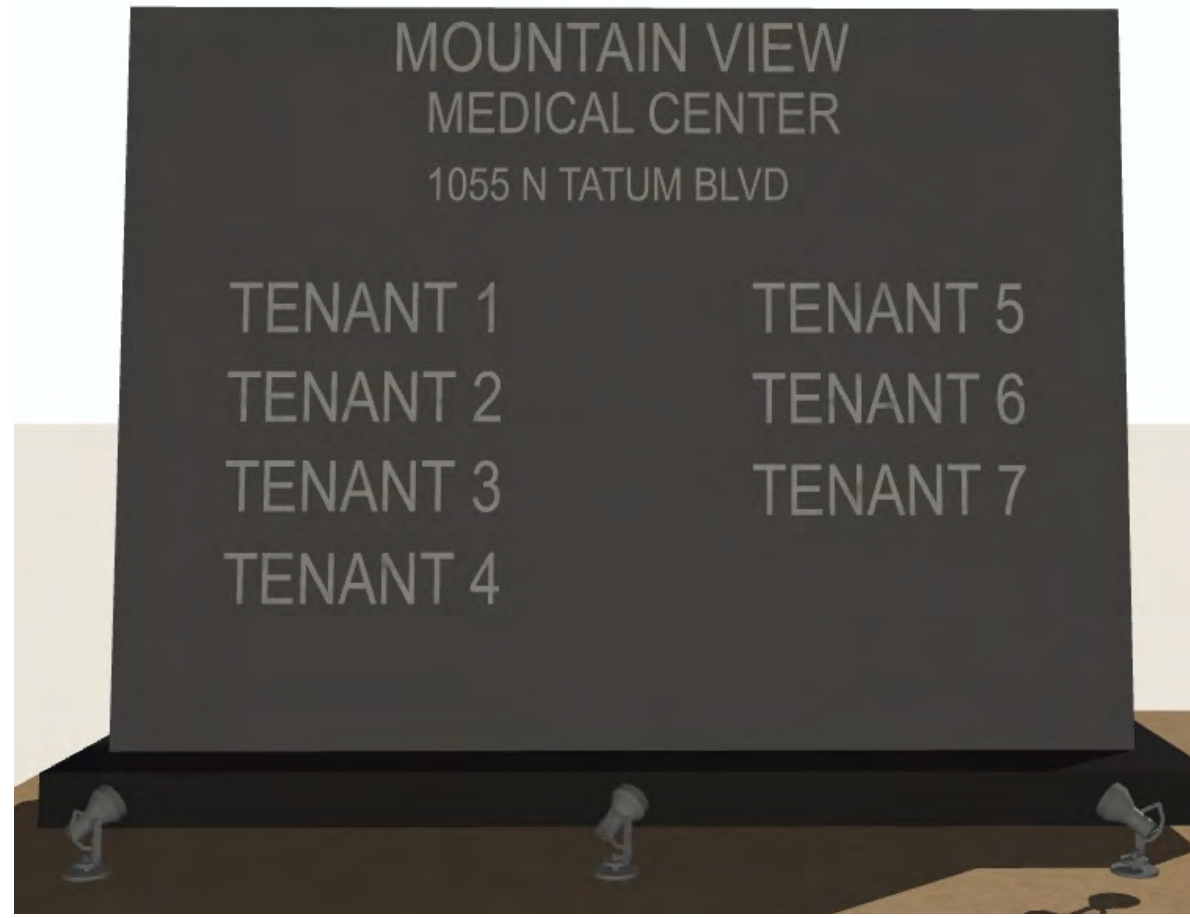
5. BLDG SIGN ON BLDG C

5.

4. 6.



1.



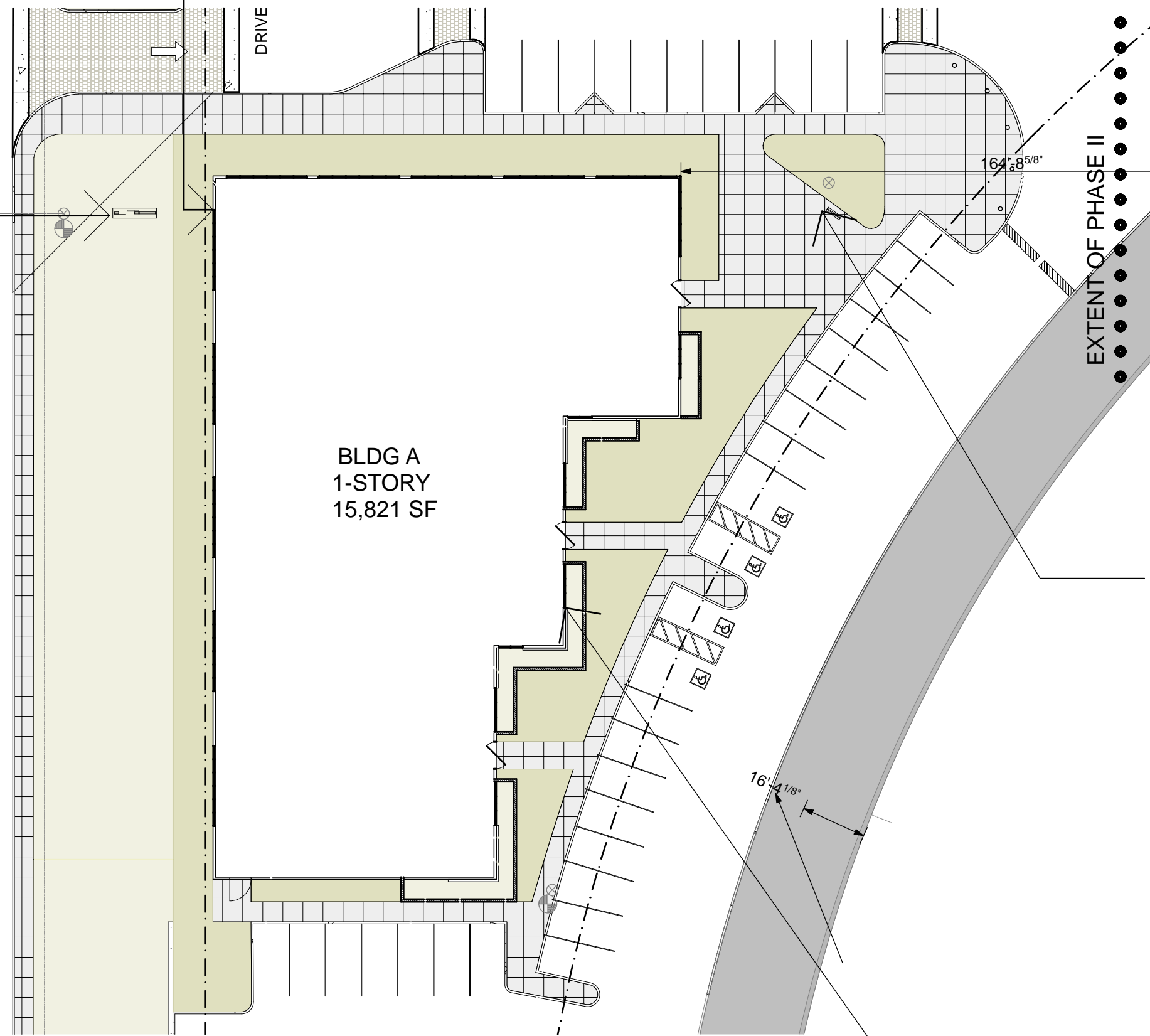
1 MONUMENT SIGN (design to change, not the size)

7.



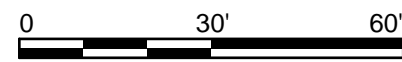
7 BLDG SIGN ON BLDG A

TATUM BOULEVARD

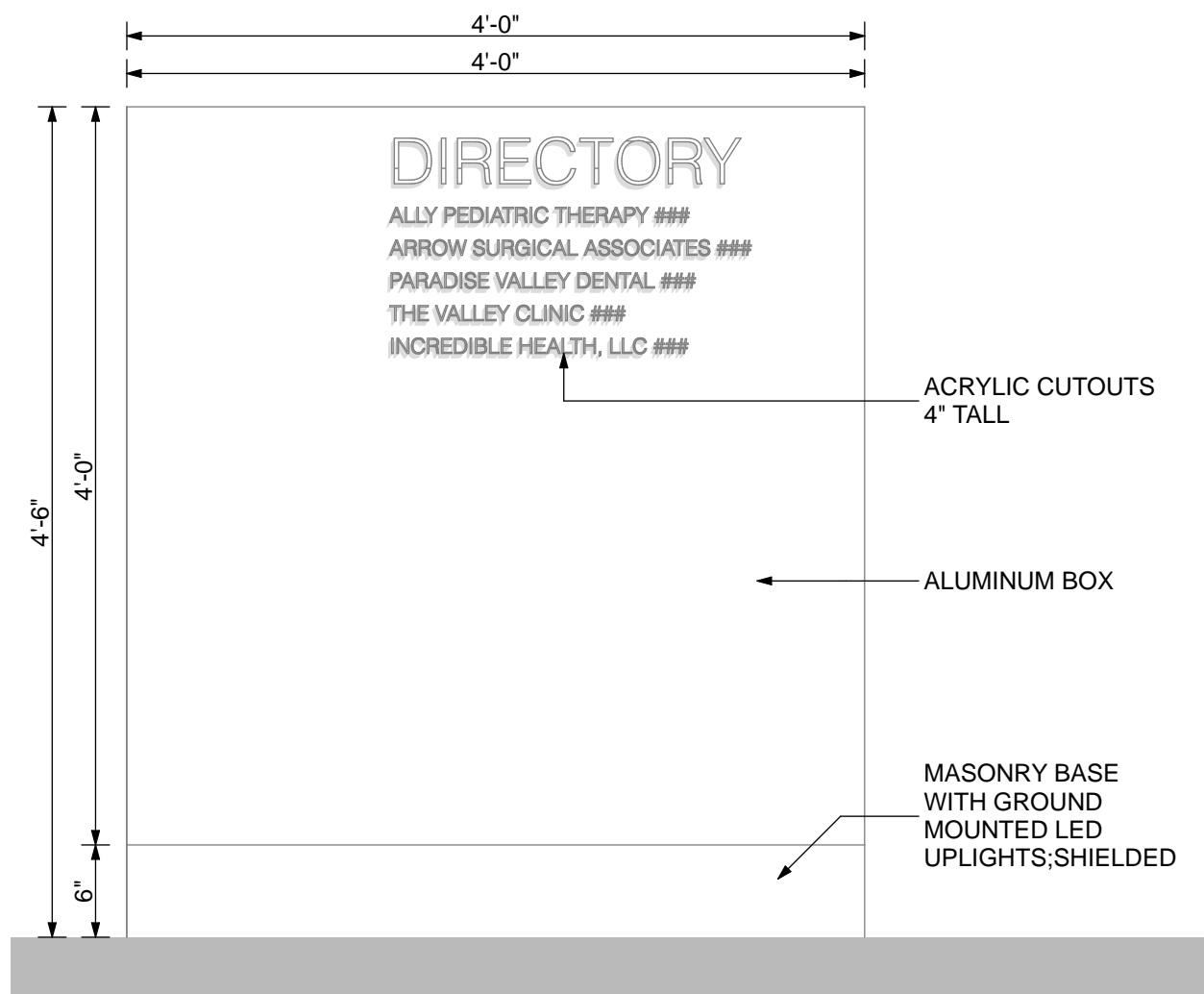


BERYL DRIVE

SIGNS 1,2,7,8 LOCATION



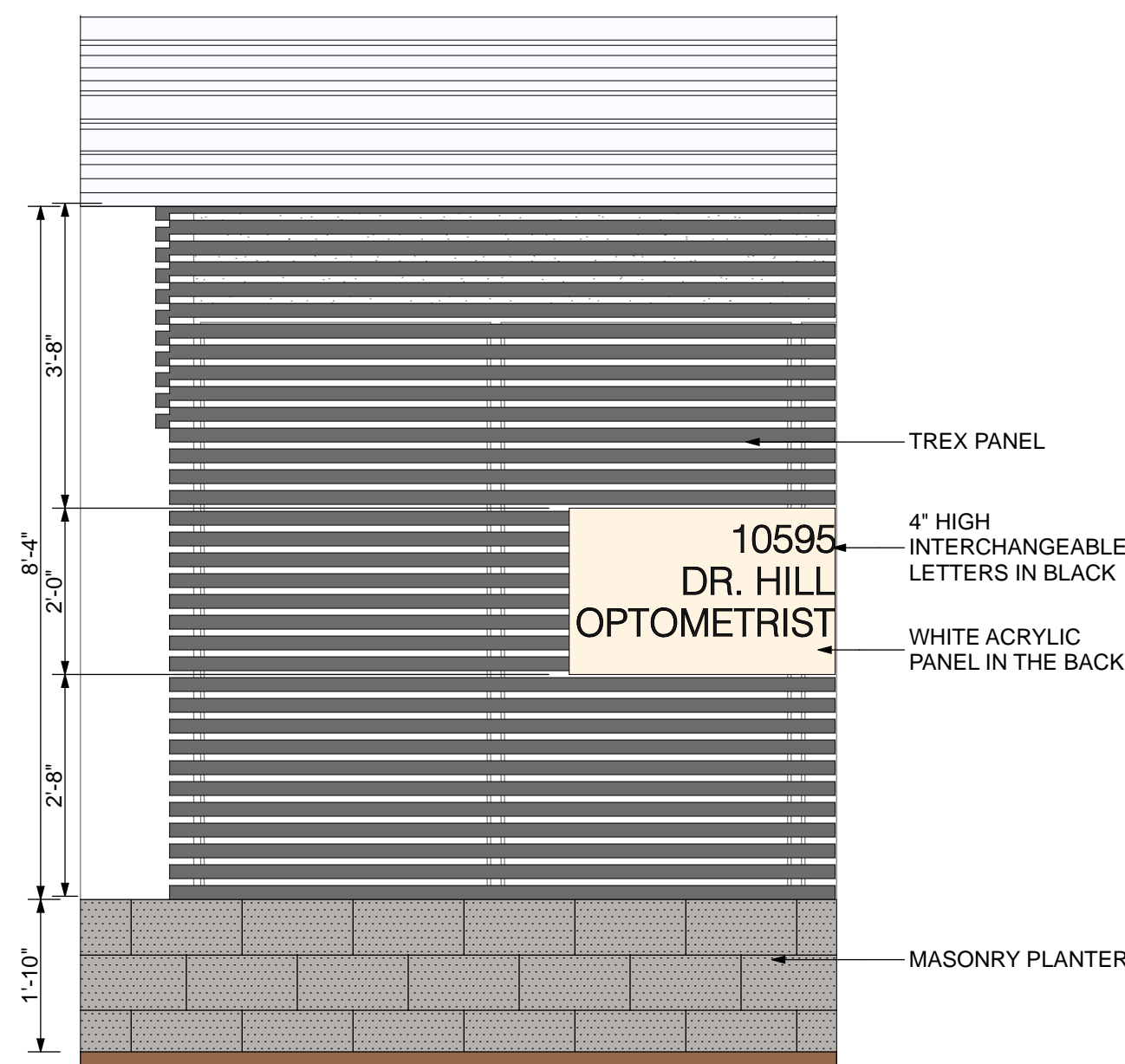
2.



2 DIRECTORY FOR BLDG A



8.



8 TYP. SUITE SIGNAGE

orcutt | winslow

2929 n central ave
eleventh floor
phoenix arizona 85012

602.257.1764 t
602.257.9029 f

www.owp.com



© 2017 this third copy or electronic drawing is an instrument of service and the property of the Orcutt|Winslow Partnership and shall remain their property. The design professional shall not be responsible for any alterations, modifications or additions made to this drawing by any party other than this design professional. Use of this drawing shall be limited to the original use for which it was prepared and publication thereof is expressly limited to such use, in use or reproduction. Unless otherwise agreed in writing, design professional reserves all copyright or other proprietary interest in this drawing, and it may not be re-used for any other purpose without the design professional's written consent. Publication by any method in whole or part is prohibited without the written permission of the design professional. Any information obtained or conclusions derived from this drawing shall be at the user's sole risk.

mountain view medical center, LLC
**Mountain View Medical
Center Redevelopment**
10555, 10565, 10575, 10585, 10595, 10599 N. Tatum Blvd , Paradise Valley,
Arizona 85253

CLIENT CONTACT

mountain view medical center, LLC 602.802.8106 t
2944 N. 44th St.
Phoenix, AZ 85018

PROJECT NO.

2018_041

DATE OF ISSUE

02.07.2019

REVISION NO.

1

2

3

4

DATE

09.26.2018

11.01.2018

01.22.2019

02.19.2019

PROJECT TEAM

John Cantrell

DRAWN BY

BD

PROJECT PHASE

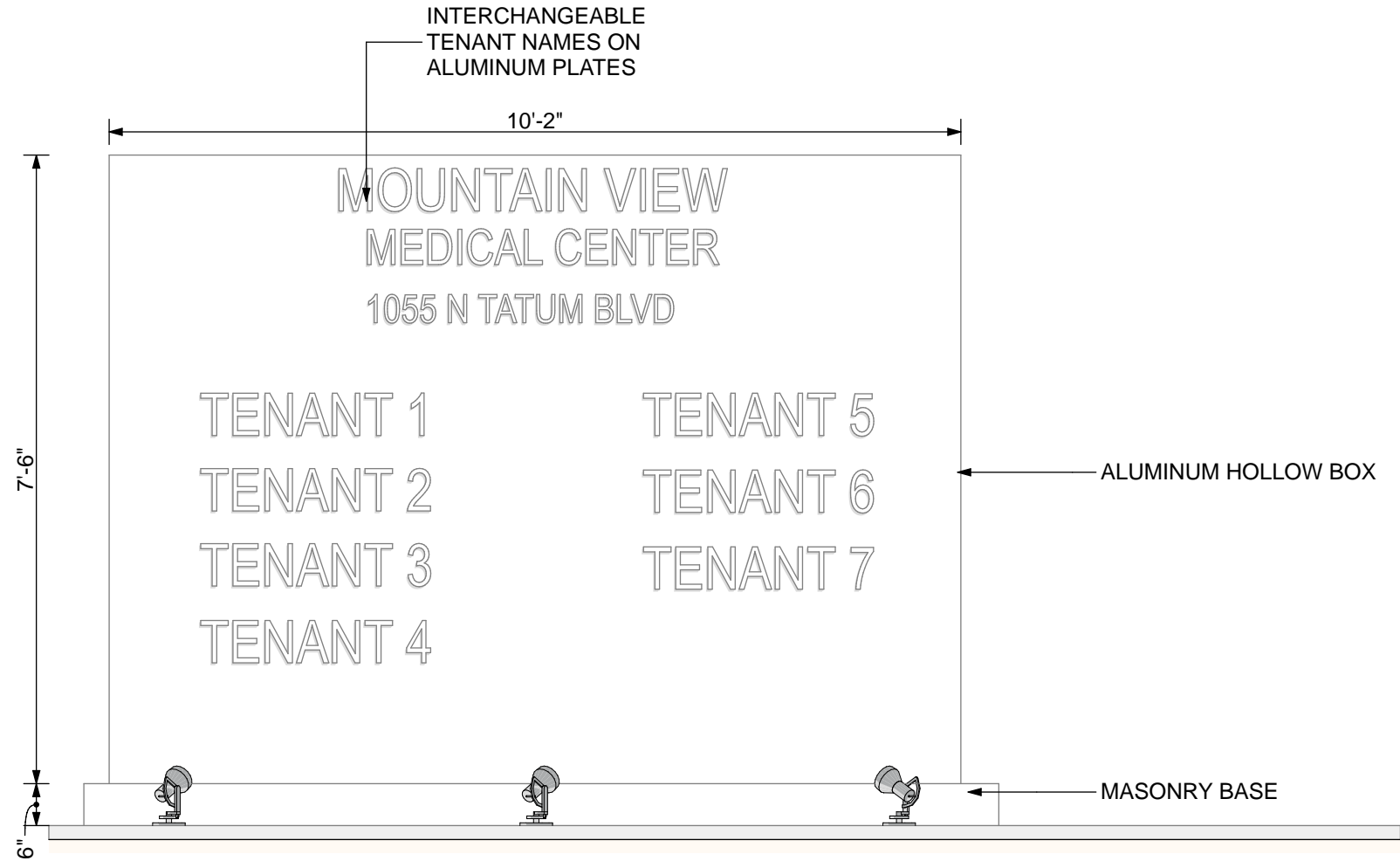
SUP major amendment
Review #4

SHEET CONTENTS

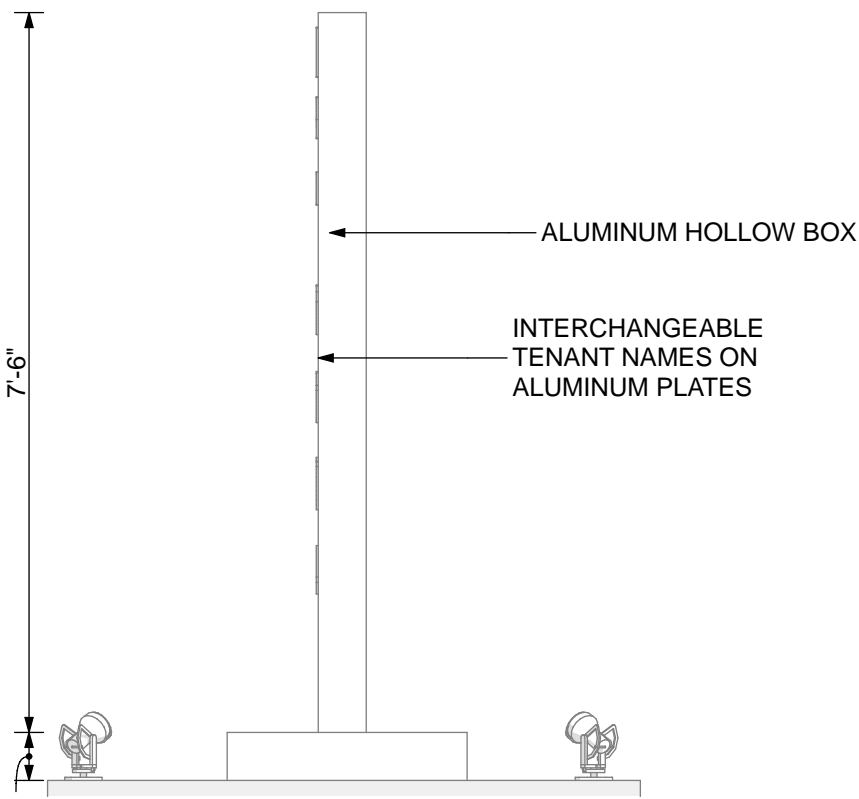
phase III signage plan

SHEET NO.

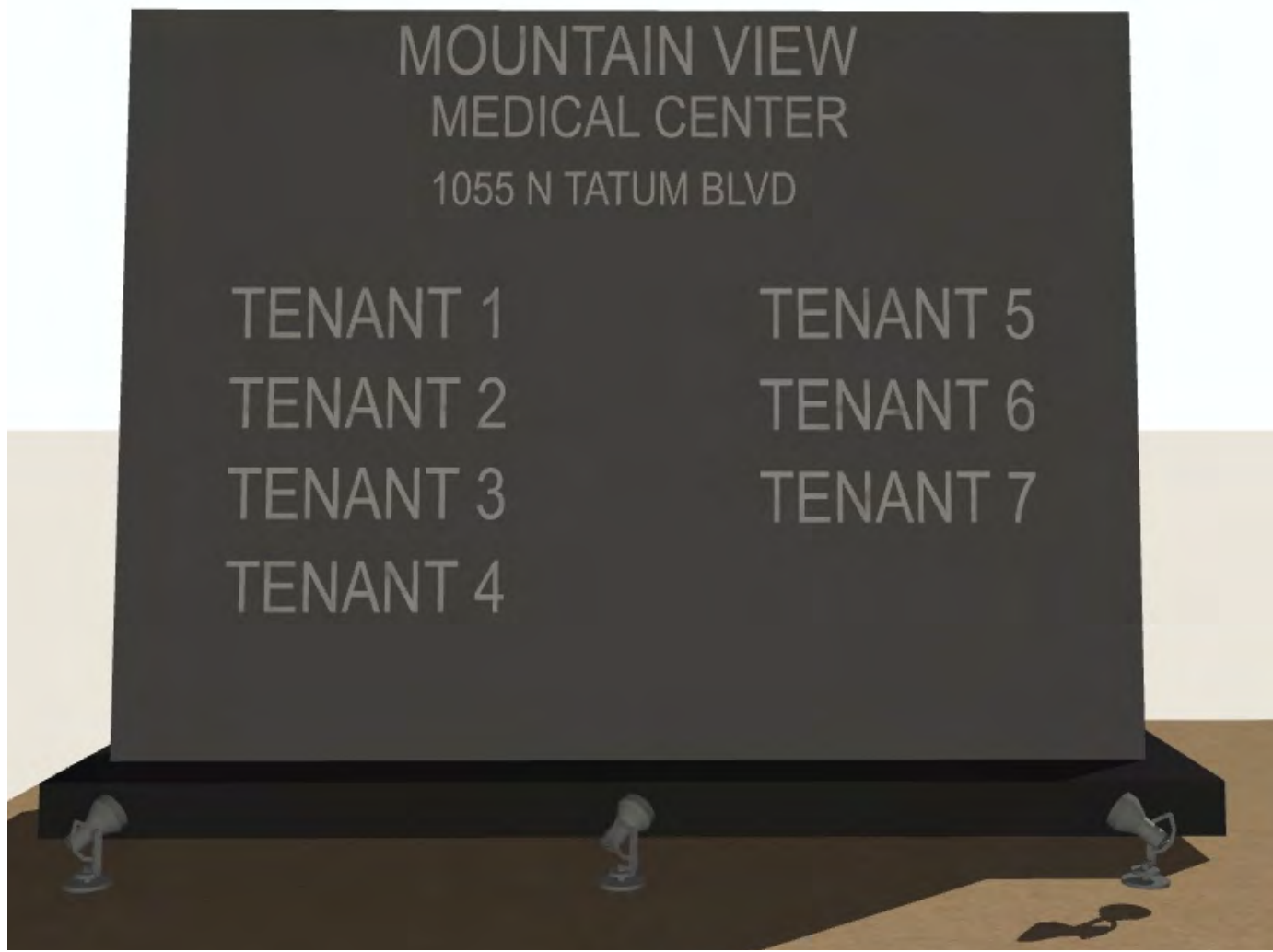
05.3.4



1 MONUMENT SIGN FRONT ELEVATION



1 MONUMENT SIGN SIDE ELEVATION

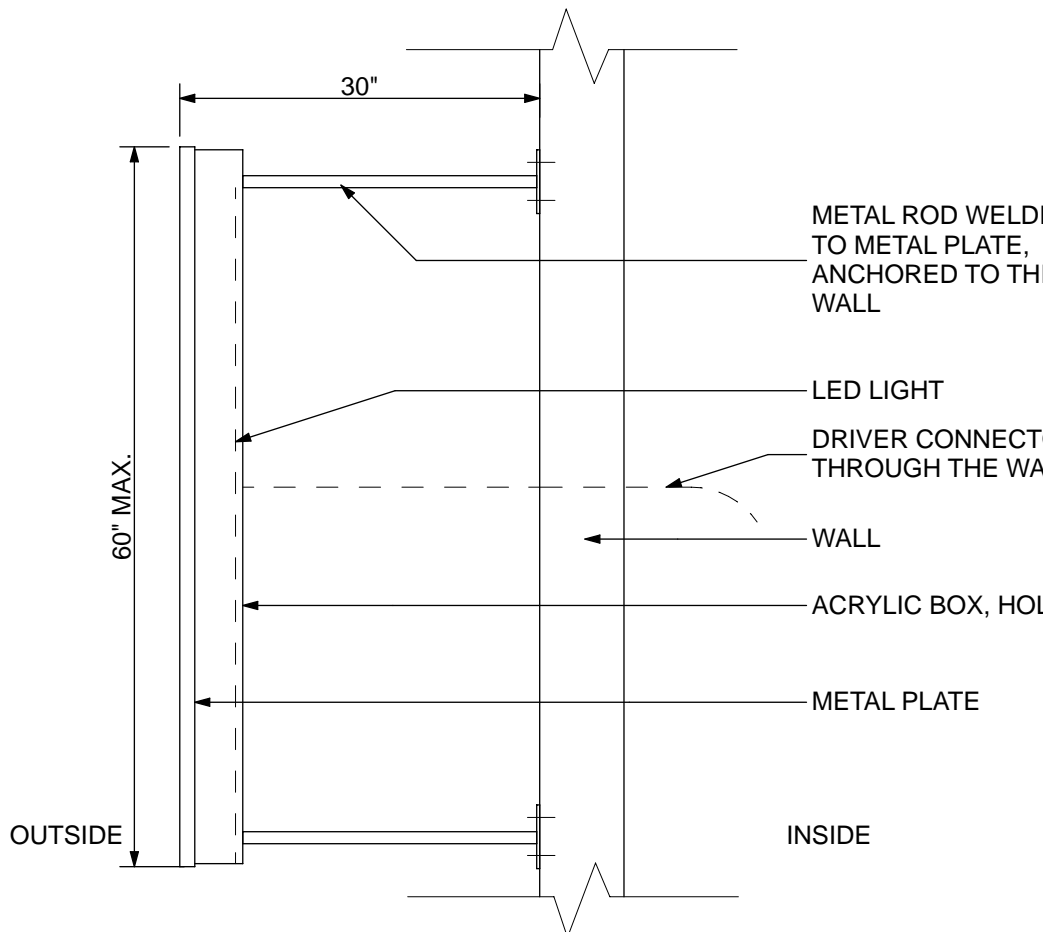


1 MONUMNET SIGN (design to change, not the size)



BLDG SIGNS 3,4,5,7 TYP. FRONT ELEVATION*

***EXAMPLES OF THE BUILDING SIGNS (NOTE: THE SIGNS AND LOGOS USED ARE ONLY FOR GRAPHIC PURPOSE)**



BLDG SIGNS 3,4,5,7 TYP. LIGHTING DETAIL



BLDG SIGNS 3,4,5,7



BLDG SIGNS 3,4,5,7

orcutt | winslow

2929 n central ave
eleventh floor
phoenix arizona 85012

602.257.1764 t
602.257.9029 f

www.owp.com

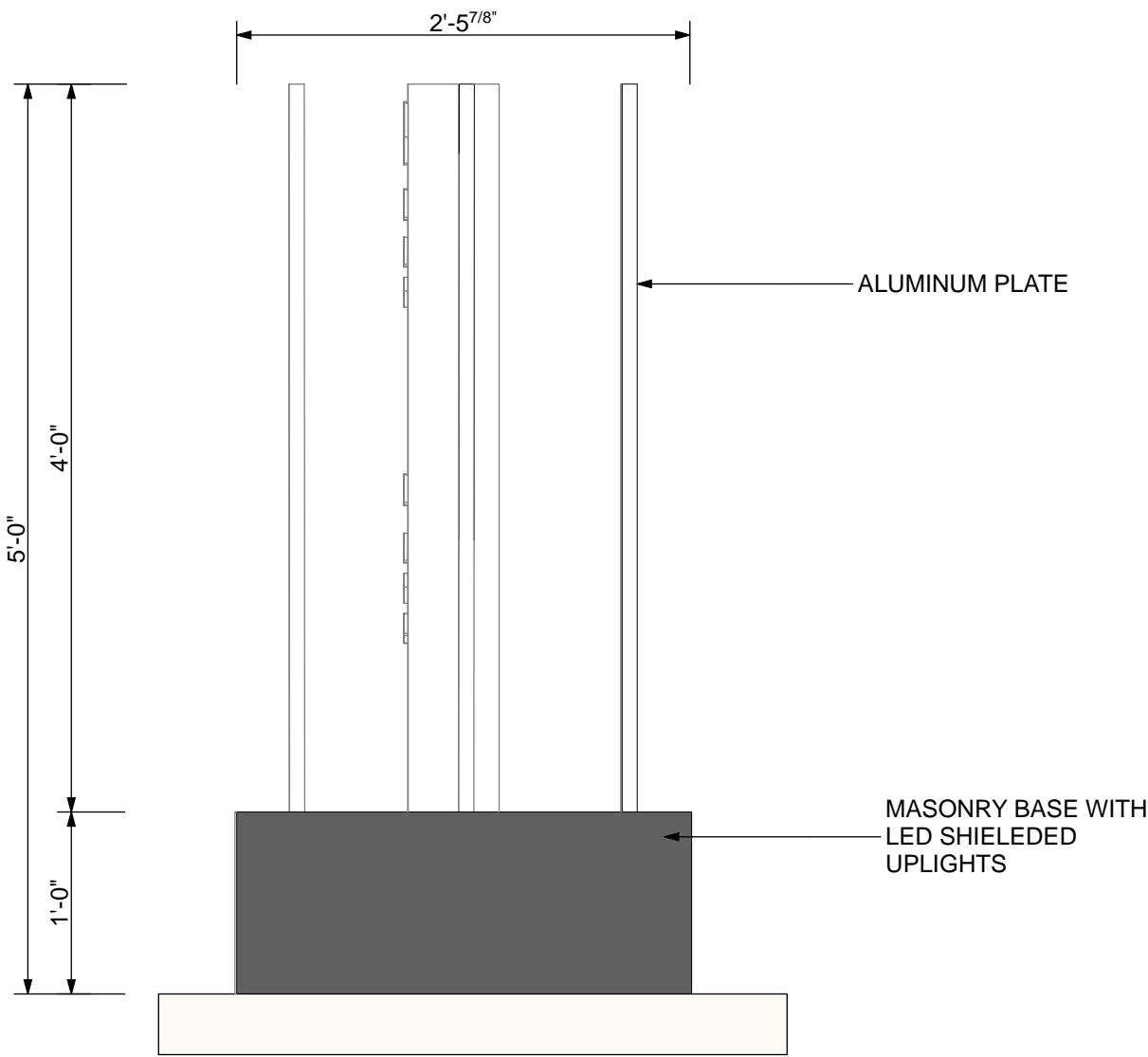
REGISTERED ARCHITECT
NOT FOR
CONSTRUCTION
Phoenix, Arizona, U.S.A.

© 2017 this (hard copy or electronic) drawing is an instrument of service and the property of the Orcutt|Winslow Partnership and shall remain their property. The design professional shall not be responsible for any alterations, modifications or additions made to this drawing by any party other than the design professional. Use of this drawing shall be limited to the original use for which it was prepared and publication thereof is expressly limited to such use, in use or reproduction. Unless otherwise agreed in writing, design professional reserves all copyright or other proprietary interest in this drawing, and it may not be re-used for any other purpose without the design professional's written consent. Publication by any method in whole or part is prohibited without the written permission of the design professional. Any information obtained or conclusions derived from this drawing shall be at the user's sole risk.

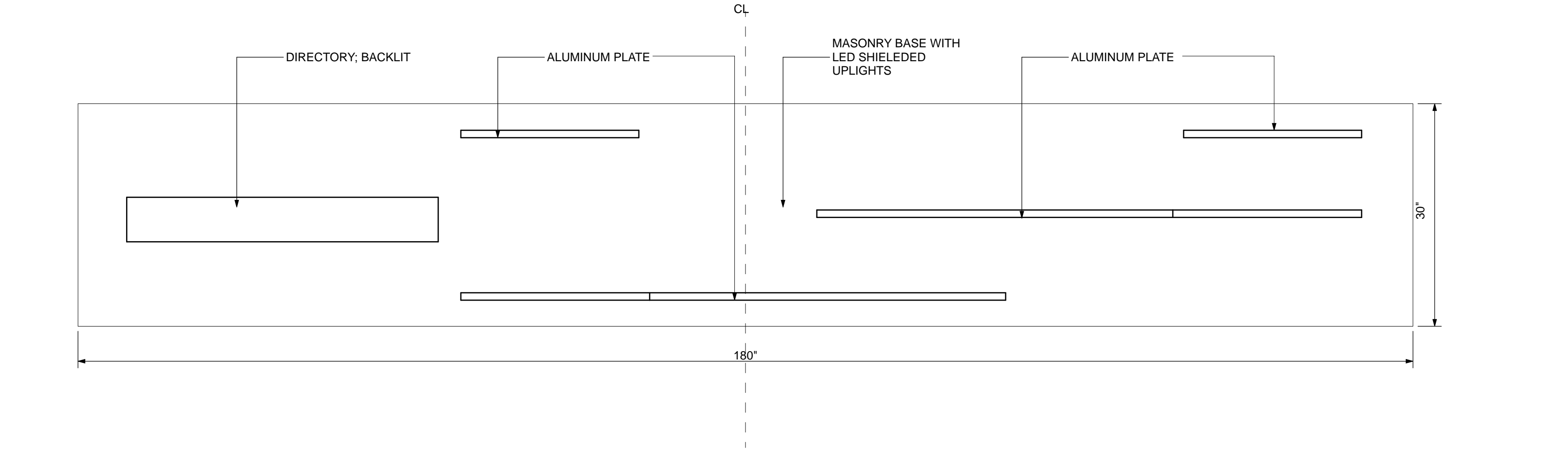
mountain view medical center, LLC
**Mountain View Medical
Center Redevelopment**
10555, 10565, 10575, 10585, 10595, 10599 N. Tatum Blvd , Paradise Valley,
Arizona 85253

CLIENT CONTACT	
mountain view medical center, LLC 2944 N. 44th St. Phoenix, AZ 85018	602.802.8106 t
PROJECT NO.	DATE OF ISSUE
2018_041	02.07.2019
REVISION NO.	DATE
1	09.26.2018
2	11.01.2018
3	01.22.2019
4	02.19.2019
PROJECT TEAM	DRAWN BY
John Cantrell	BD
PROJECT PHASE	
SUP major amendment Review #4	
SHEET CONTENTS	
bldg and monument sign	
SHEET NO.	

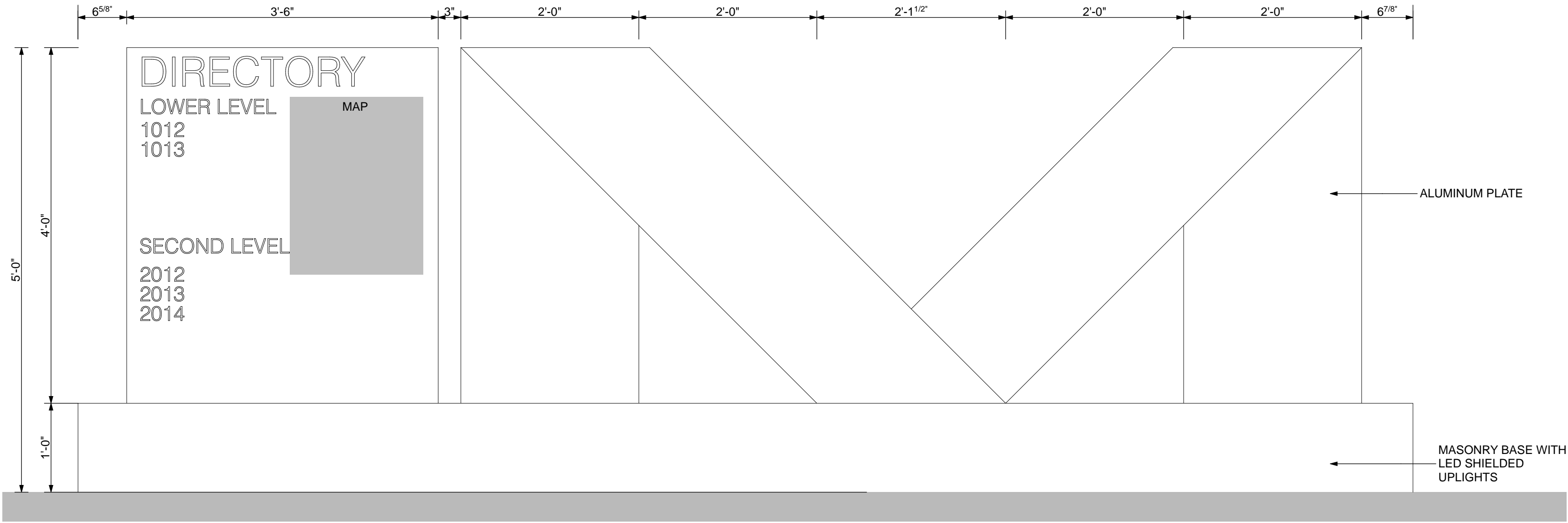
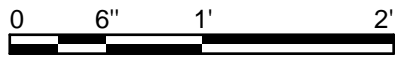
05.3.5



6 BLDGS B,C,D,E DIRECTORY SIDE ELEVATION



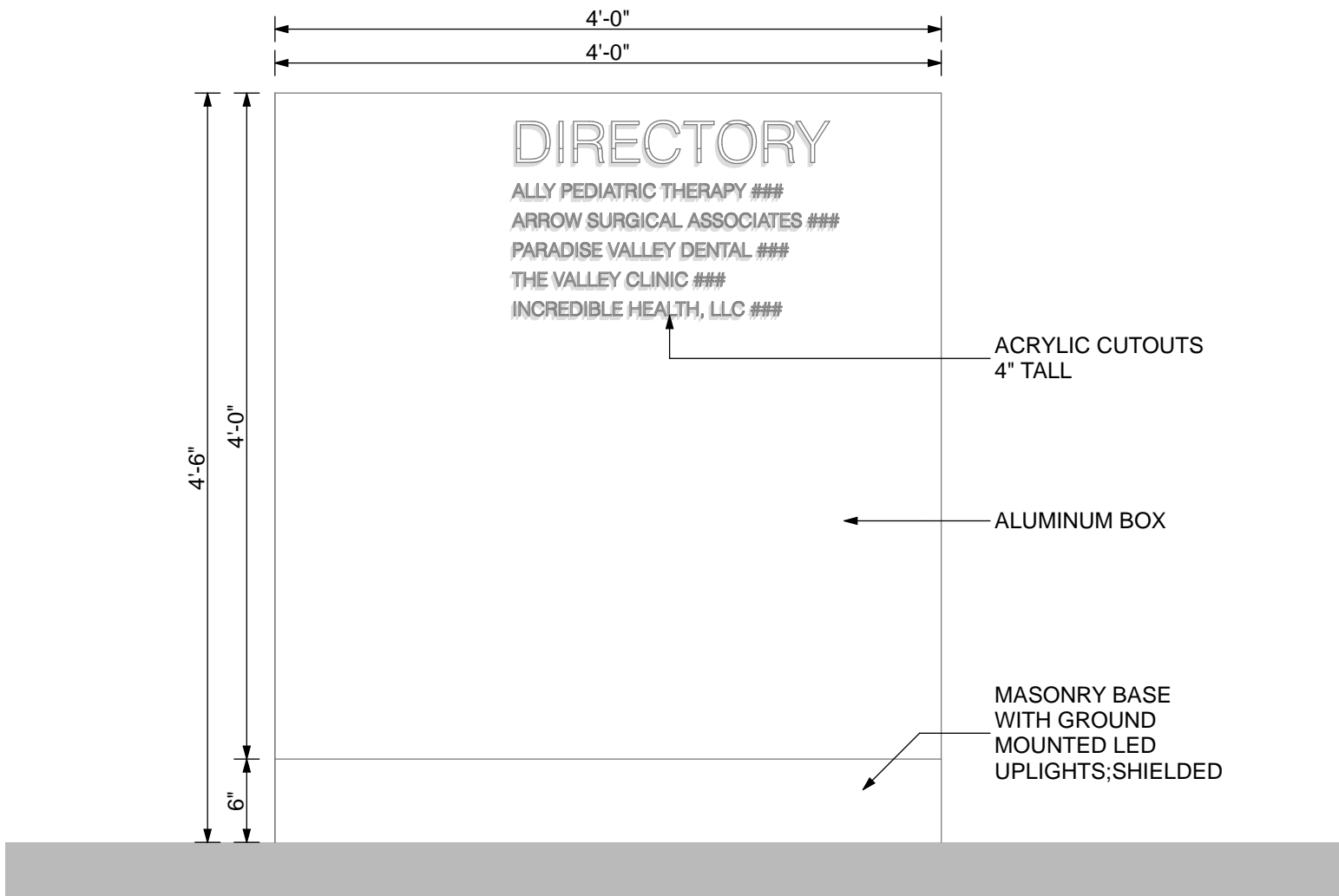
6 BLDGS B,C,D,E DIRECTORY PLAN



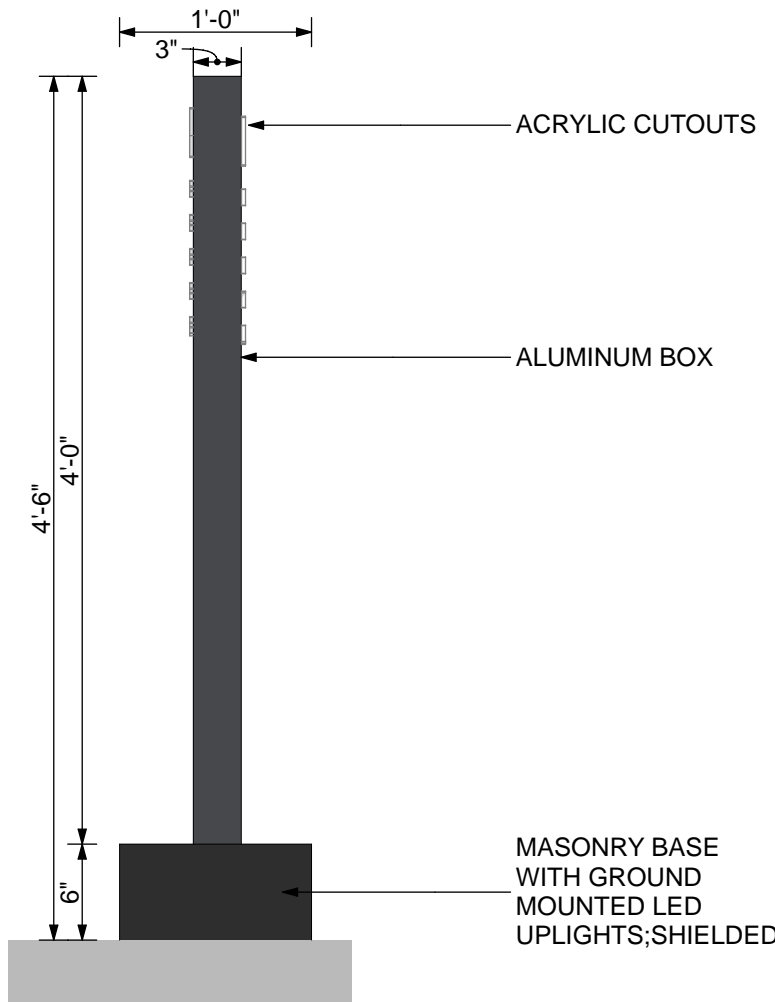
6 BLDGS B,C,D,E DIRECTORY FRONT ELEVATION



6 BLDGS B,C,D,E DIRECTORY



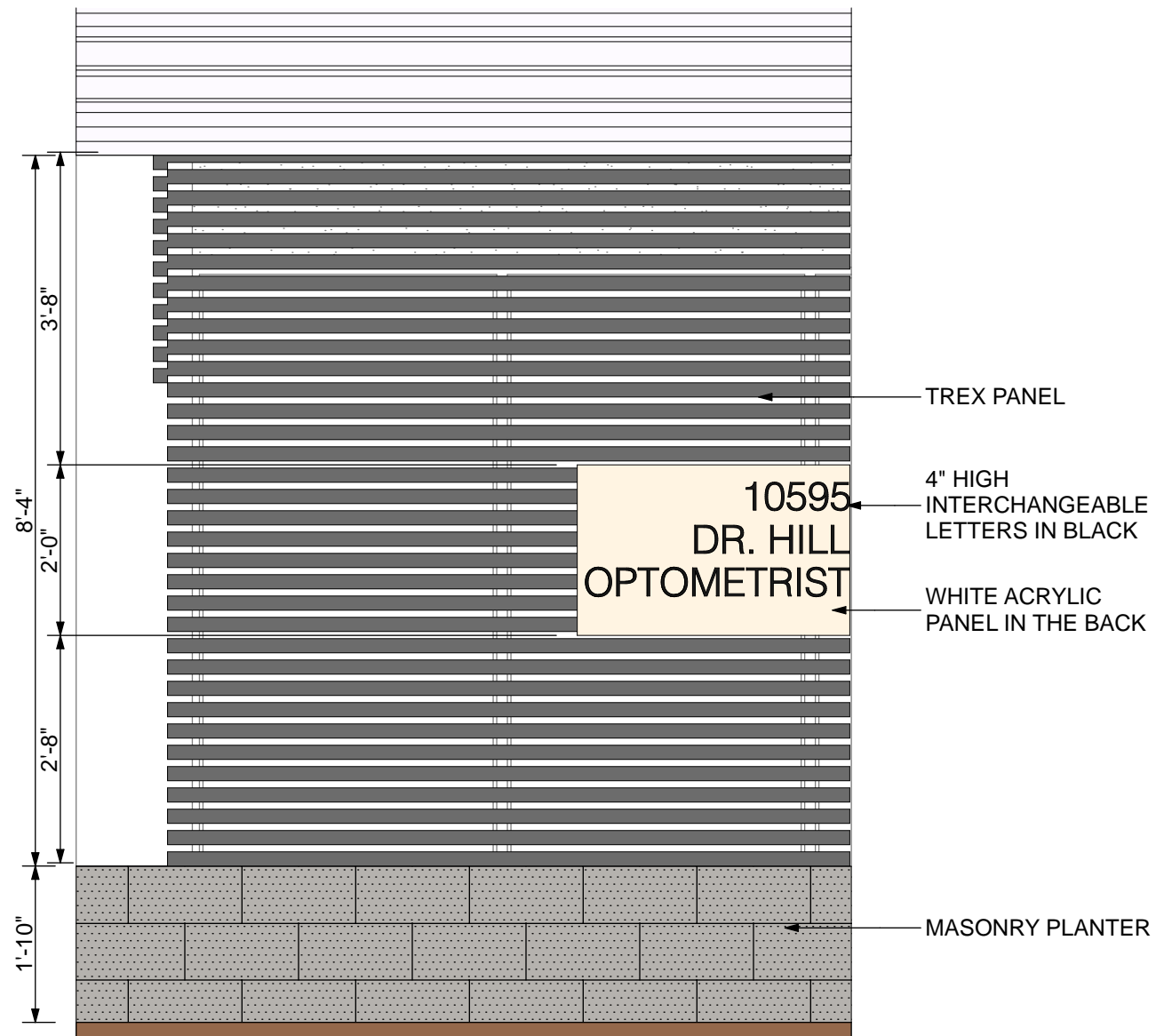
2 BLDGS A&F DIRECTORY FRONT ELEVATION



2 BLDGS A&F DIRECTORY SIDE ELEVATION



2 BLDGS A&F DIRECTORY



8 TYP. SUITE SIGN FRONT ELEVATION

2929 n central ave
eleventh floor
phoenix arizona 85012

602.257.1764 t
602.257.9029 f

www.owp.com



© 2017 this (hard copy or electronic) drawing is an instrument of service and the property of the Orcutt|Winslow Partnership and shall remain their property. The design professional shall not be responsible for any alterations, modifications or additions made to this drawing by any party other than the design professional. Use of this drawing shall be limited to the original use for which it was prepared and publication thereof is expressly limited to such use, in use or reproduction. Unless otherwise agreed in writing, design professional reserves all copyright or other proprietary interest in this drawing, and it may not be re-used for any other purpose without the design professional's written consent. Publication by any method in whole or part is prohibited without the written permission of the design professional. Any information obtained or conclusions derived from this drawing shall be at the user's sole risk.

mountain view medical center, LLC
**Mountain View Medical
Center Redevelopment**
10555, 10565, 10575, 10585, 10595, 10599 N. Tatum Blvd , Paradise Valley,
Arizona 85253

CLIENT CONTACT
mountain view medical center, LLC
2944 N. 44th St.
Phoenix, AZ 85018
602.802.8106 t

PROJECT NO. 2018_041
DATE OF ISSUE 02.07.2019

REVISION NO. 1
DATE 09.26.2018
2
DATE 11.01.2018
3
DATE 01.22.2019
4
DATE 02.19.2019

PROJECT TEAM John Cantrell
DRAWN BY BD

PROJECT PHASE
SUP major amendment
Review #4
SHEET CONTENTS
suite sign and directory

SHEET NO.
05.3.7