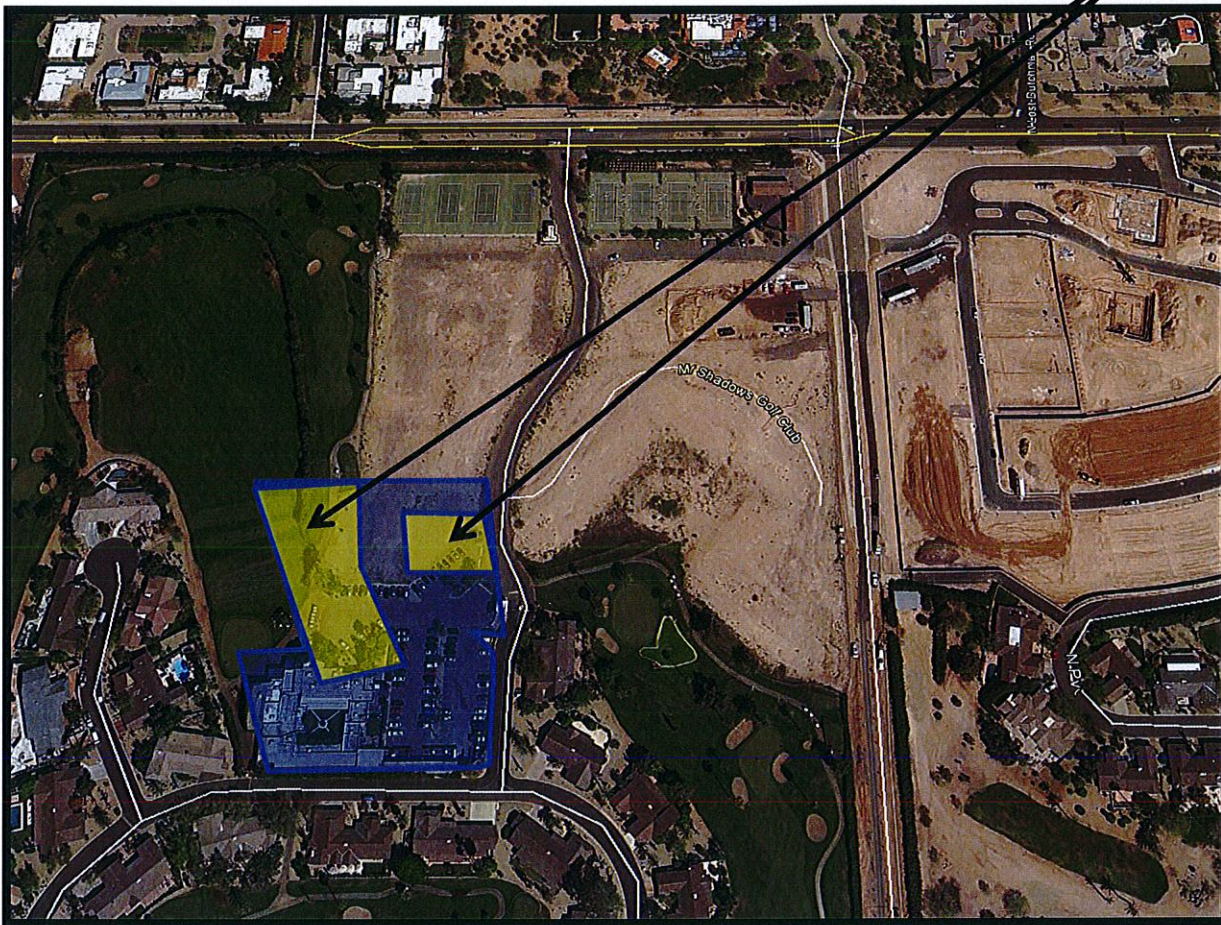




VICINITY MAP

Subject Property



"The Villas at Mountain Shadows – Amended - Condominiums"

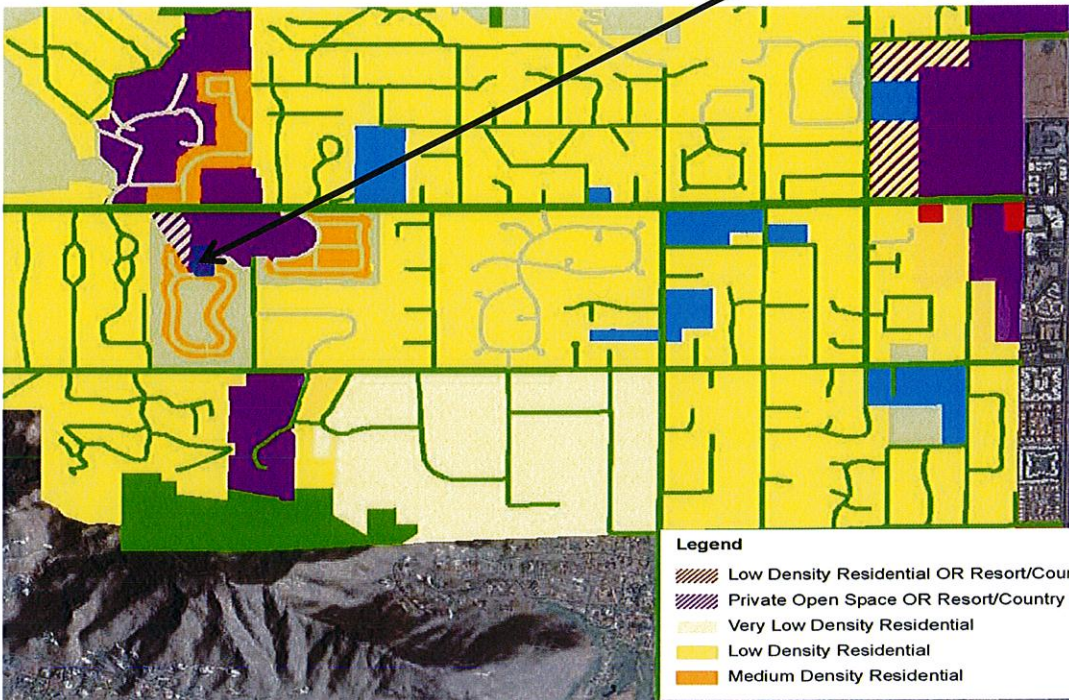
Preliminary Condominium Plat Map (PP 16-01)

Southwest Corner Lincoln Drive and 56th Street (Assessor No. 169-30-103)



GENERAL PLAN

Subject Property



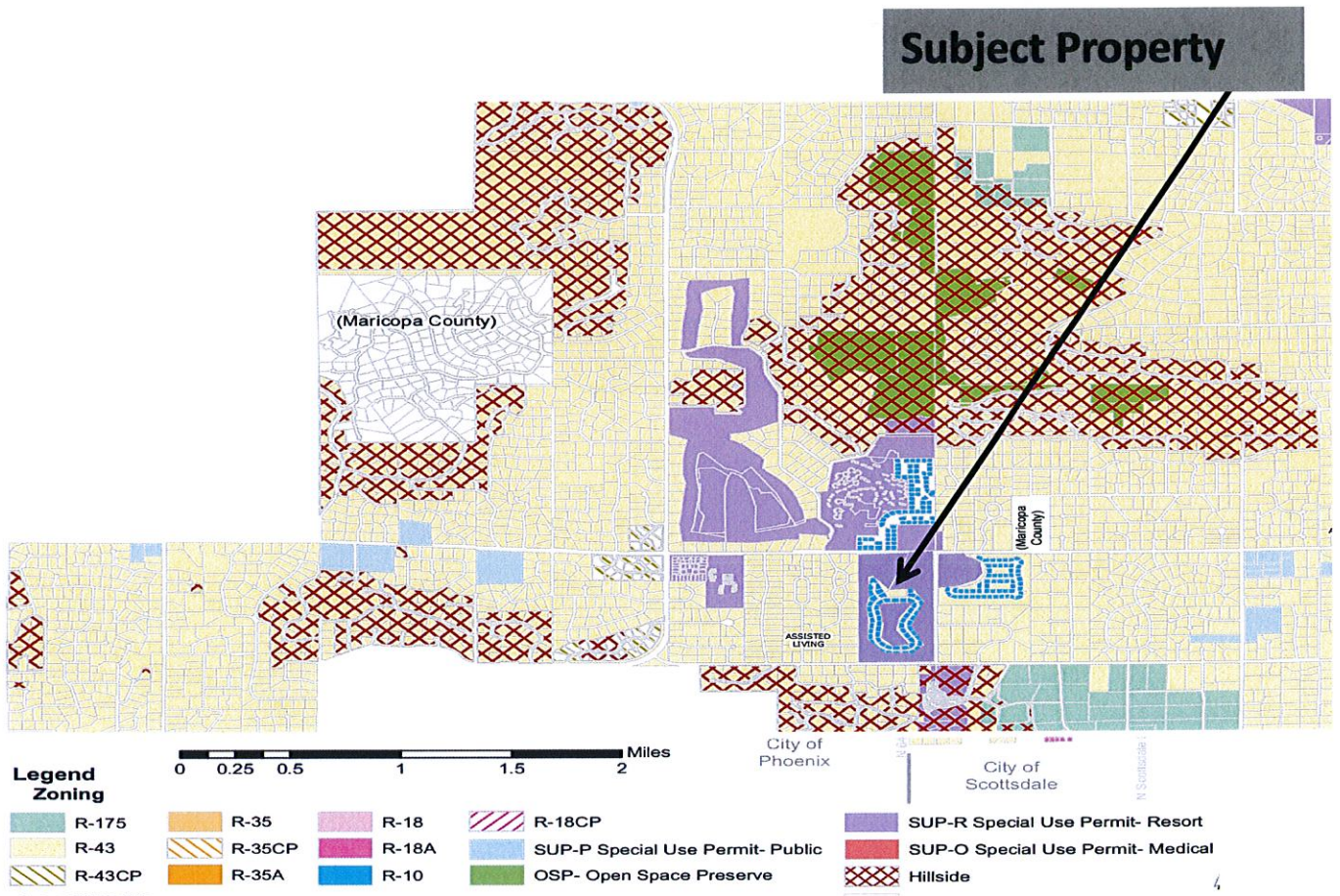
"The Villas at Mountain Shadows – Amended - Condominiums"

Preliminary Condominium Plat Map (PP 16-01)

Southwest Corner Lincoln Drive and 56th Street (Assessor No. 169-30-103)



ZONING MAP



1.0 acres of 67-acre site

“The Villas at Mountain Shadows – Amended - Condominiums”

Preliminary Condominium Plat Map (PP 16-01)

Southwest Corner Lincoln Drive and 56th Street (Assessor No. 169-30-103)