



## Camelback Bible Church Fellowship Hall Addition Project Narrative

The proposed Minor Amendment to the existing Camelback Bible Church SUP includes a 5,000 SF addition to the existing 5,500 SF Fellowship Hall located on the south-east corner of the Camelback Bible Church Campus. The proposed new addition is located to the south and east of the existing Fellowship Hall and consists of new storage and administration program spaces for the Church. The massing of the proposed addition is varied in scale and materials, stepping down in height along the south elevation facing Stanford Drive. The new east facing entry sequence defined by the cantilevered roof projection creates a more open and inviting presence for the Church Administration on the east side of the campus. The additional 5,000 SF of new impervious roof area required for the new addition will be offset by the reconfiguration of the existing entry driveway and removal of approximately 5,000 SF of existing asphalt pavement to the south of the existing Fellowship Hall which will be replaced with new pervious landscaped areas.

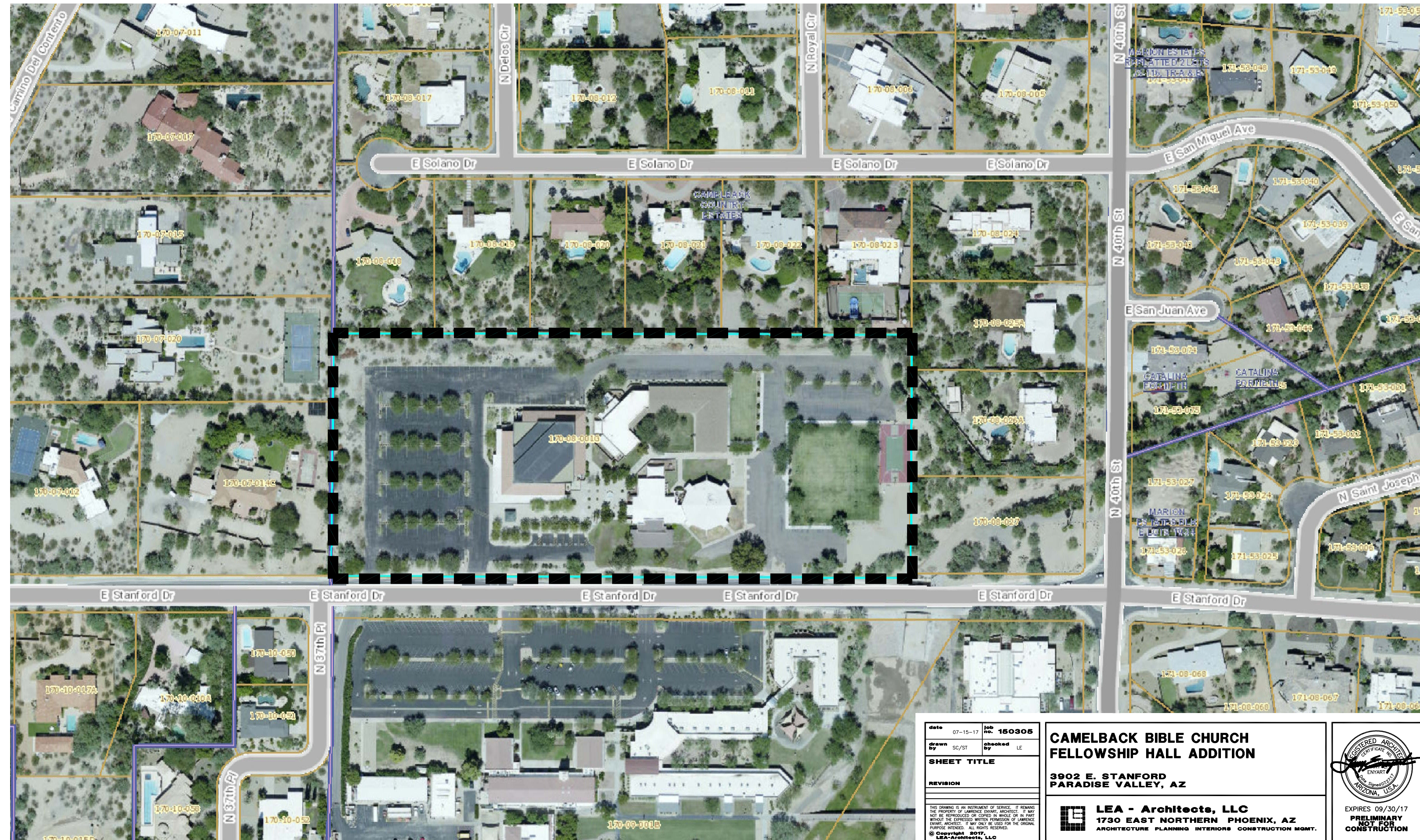


view north-west towards administration entry



south elevation – view from Stanford Drive





date	07-15-17	job no.	150305
drawn by	SC/ST	checked by	LE
<b>SHEET TITLE</b>			
<b>REVISION</b>			
<small>THIS DRAWING IS AN INSTRUMENT OF SERVICE. IT REMAINS THE PROPERTY OF LAWRENCE ENYART, ARCHITECT. IT MAY NOT BE REPRODUCED OR COPIED IN WHOLE OR IN PART WITHOUT THE EXPRESSED WRITTEN PERMISSION OF LAWRENCE ENYART, ARCHITECT. IT MAY ONLY BE USED FOR THE ORIGINAL PURPOSE INTENDED. ALL RIGHTS RESERVED.</small>			
<small>© Copyright 2017 LEA Architects, LLC</small>			

**CAMELBACK BIBLE CHURCH  
FELLOWSHIP HALL ADDITION**

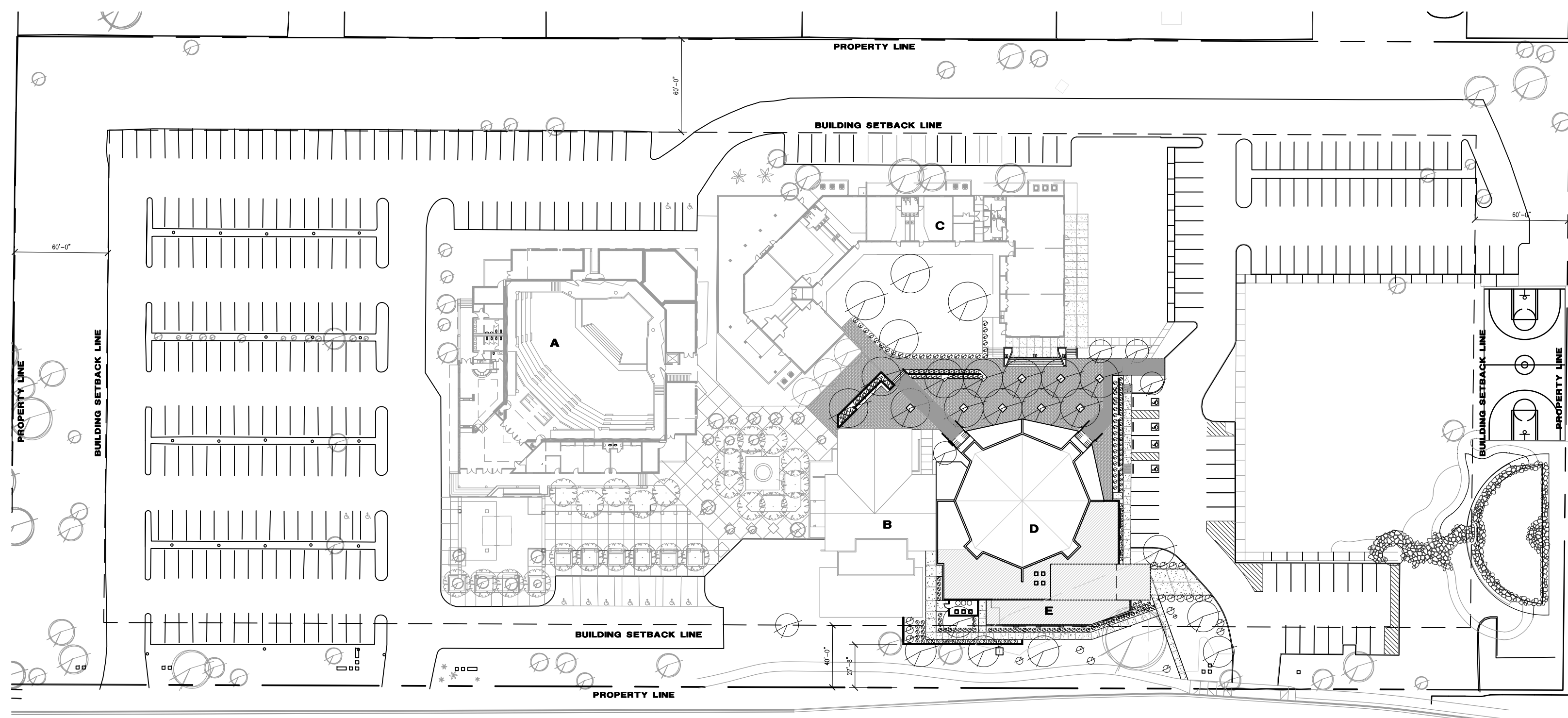
**3902 E. STANFORD  
PARADISE VALLEY, AZ**

**LEA - Architects, LLC**  
1730 EAST NORTHERN PHOENIX, AZ  
ARCHITECTURE PLANNING INTERIORS CONSTRUCTION MGMT.

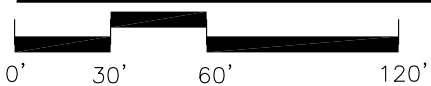
REGISTERED ARCHITECT  
LAWRENCE ENYART  
ENYART ARCHITECTS  
PHOENIX, ARIZONA, U.S.A.

EXPIRES 09/30/17  
**PRELIMINARY  
NOT FOR  
CONSTRUCTION**





**FELLOWSHIP HALL  
OVERALL SITE PLAN**



SCALE: 1"=60'-0"



**STANFORD DRIVE**

5,000SF STORAGE AREA & ADMINISTRATION ADDITION

PARKING PROVIDED (EXISTING)	= 307
PARKING REQ. PER 2013 SUP PARKING SUMMARY WITHOUT CONSIDERATION OF INTERNAL CAPTURE	= 284
PARKING REQ. PER 2013 SUP PARKING SUMMARY WITH CONSIDERATION OF INTERNAL CAPTURE	= 214
ADDITIONAL PARKING REQ. FOR NEW ADMIN BUILDING ADDITION	= 17
TOTAL PARKING PROVIDED IS GREATER THAN REQUIRED PARKING PER 2013 SUP PARKING SUMMARY WITH/WITHOUT CONSIDERATION OF INTERNAL CAPTURE	

<b>SITE AREA</b>		
SQUARE FOOTAGE	= 417,000	100%
TOTAL SITE ACREAGE	= 9.573	
<b>BUILDING COVERAGE</b>		
TOTAL EXISTING SQUARE FOOTAGE	= 41,350	9.92%
NEW ADDITION - ADMIN./STOR. BLDG.	= 5,000	
TOTAL PROPOSED SQUARE FOOTAGE	= 46,350	11.12%
<b>PERMANENT PARKING AREA</b>		
TOTAL EXISTING SQUARE FOOTAGE	= 143,990	34.53%
TOTAL SQUARE FOOTAGE REDUCTION	= 5,820	
TOTAL PROPOSED SQUARE FOOTAGE	= 138,170	33.13%

<b>FLOOR AREA RATIO</b>			
EXISTING	= 45,505/ 417,000	10.91%	
PROPOSED	= 50,505/ 417,000	12.11%	

<b>BUILDING SETBACKS</b>	
NORTH SETBACK	60'-0"
SOUTH SETBACK	40'-0"
EAST SETBACK	60'-0"
WEST SETBACK	60'-0"
<b>LANDSCAPE SETBACKS</b>	
NORTH SETBACK	40'-0"
SOUTH SETBACK	30'-0"
EAST SETBACK	40'-0"
WEST SETBACK	40'-0"

<b>BUILDING MAX HEIGHT</b>	
<b>A</b> SANCTUARY	32'-0"
<b>B</b> ADMINISTRATION	14'-0"
<b>C</b> SCHOOL	15'-0"
<b>D</b> FELLOWSHIP HALL	17'-4"
<b>E</b> NEW ADDITION ADMINISTRATION/STORAGE	17'-8"

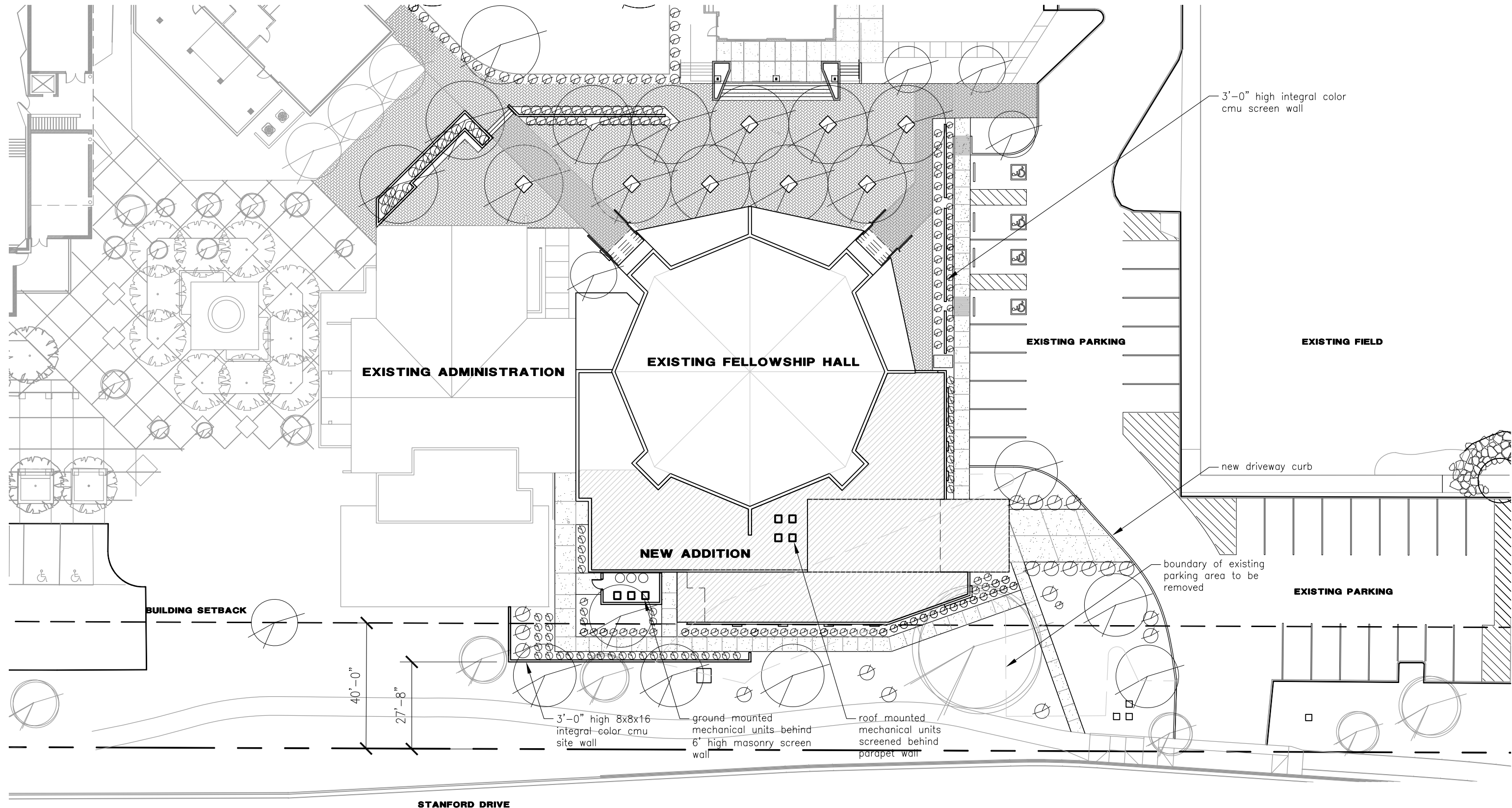
date	07-15-17	job no.	150305
drawn by	SC/ST	checked by	LE
<b>SHEET TITLE</b>			
REVISION			
<small>THIS DRAWING IS AN INSTRUMENT OF SERVICE. IT REMAINS THE PROPERTY OF LAWRENCE ENYART, ARCHITECT. IT MAY NOT BE REPRODUCED OR COPIED IN WHOLE OR IN PART WITHOUT THE EXPRESSED WRITTEN PERMISSION OF LAWRENCE ENYART, ARCHITECT. IT MAY ONLY BE USED FOR THE ORIGINAL PURPOSE INTENDED. ALL RIGHTS RESERVED.</small>			
<small>© Copyright 2017 LEA-Architects, LLC</small>			

**CAMELBACK BIBLE CHURCH  
FELLOWSHIP HALL ADDITION**

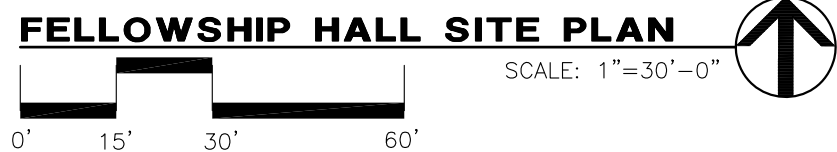
**3902 E. STANFORD  
PARADISE VALLEY, AZ**

**LEA - Architects, LLC**  
1730 EAST NORTHERN PHOENIX, AZ  
ARCHITECTURE PLANNING INTERIORS CONSTRUCTION MGMT.

EXPIRES 09/30/17  
**PRELIMINARY  
NOT FOR  
CONSTRUCTION**



 5,000SF STORAGE AREA & ADMINISTRATION ADDITION




date	07-15-17	job no.	150305
drawn by	SC/ST	checked by	LE
<b>SHEET TITLE</b>			
<b>REVISION</b>			
<small>THIS DRAWING IS AN INSTRUMENT OF SERVICE. IT REMAINS THE PROPERTY OF LAWRENCE ENYART, ARCHITECTS. IT MAY NOT BE REPRODUCED OR COPIED IN WHOLE OR IN PART WITHOUT THE EXPRESSED WRITTEN PERMISSION OF LAWRENCE ENYART, ARCHITECTS. IT MAY ONLY BE USED FOR THE ORIGINAL PURPOSE INTENDED. ALL RIGHTS RESERVED.</small>			
<small>© Copyright 2017, LEA-Architects, LLC</small>			

**CAMELBACK BIBLE CHURCH  
FELLOWSHIP HALL ADDITION**

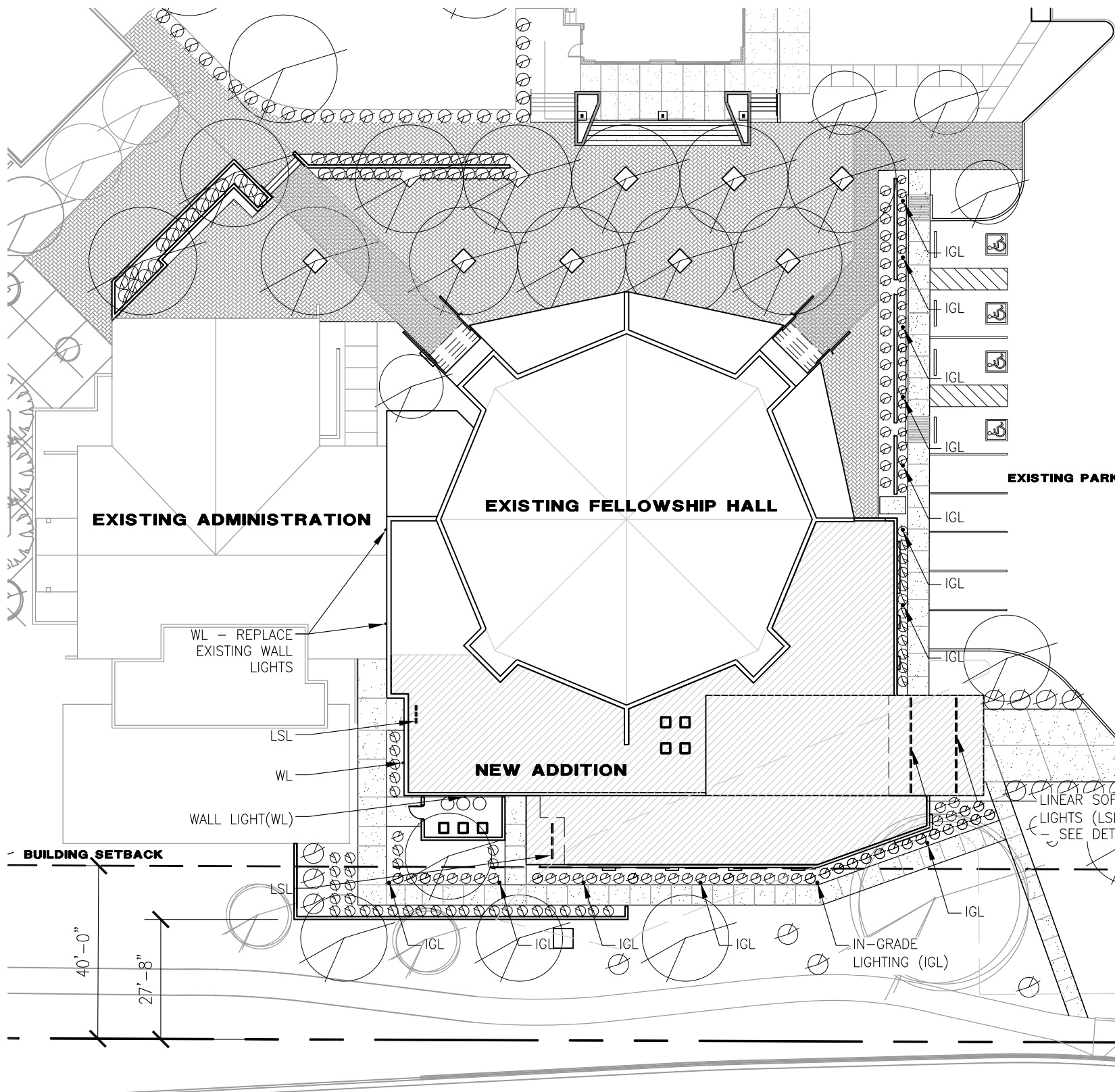
**3902 E. STANFORD  
PARADISE VALLEY, AZ**

**LEA - Architects, LLC**  
1730 EAST NORTHERN PHOENIX, AZ  
ARCHITECTURE PLANNING INTERIORS CONSTRUCTION MGMT.



EXPIRES 09/30/17  
**PRELIMINARY  
NOT FOR  
CONSTRUCTION**





**IN-GRADE LIGHTS (IGL)**

Drive-over surface-mounted luminaires to illuminate ground surfaces

**Outer Housing:** Constructed of high tensile strength, rugged free thermal expansion alloy with heat shield covering. Stainless stainless steel base plate allows top casting to rotate to any orientation. Die casting and hot-dip galvanized zinc plating (0.25 mil) provides 100% corrosion resistance.

**Enclosure:** One piece heavy duty die cast aluminum body with clear polycarbonate lens. Removable or break-apart enclosure. All materials used in the construction are weather grade and corrosion free. All materials are stainless steel. Two (2) mounted one-piece, high temperature silicone gaskets on top and bottom of the lens.

**Electrical:** 1.2W LED Luminaires, 1.5 W system with 0.270 watt temperature. Remote 24V DC driver required. LED modules are available from factory for easy replacement. Standard LED color temperature is 3000K with 4000K. Available in 4000K, 5000K with 4000K color.

**Note:** LED luminaires are subject to change at the discretion of BEGA AG. For the most current technical data, please refer to manufacturer's website.

**Mounting:** Luminaires mount directly to ground-mounted mounting surface. BEGA offers 10" and 12" hole patterns for mounting.

**Note:** The luminaire must not be installed in traffic lanes where they are subject to horizontal pressure from vehicles braking, accelerating and changing direction. A foundation must be supported by the contractor designed to bear the vehicle's weight from vehicles with gross weight limit. The luminaire is designed to withstand a static load of 2,200 lbs.

**Finish:** All BEGA standard finishes are powder coated steel with minimum 2 mil thickness. Available in standard BEGA finish: BE-1. Custom colors not available.

CSA certified to U.S. and Canadian standards for wall luminaires. Project rated IP65.

**Weight:** 7.1 lbs.

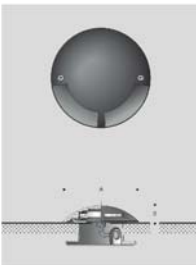
**Remote 24V driver options:**  
 S80 Remote 24V LED driver and box  
 S81 Remote 24V dimming LED driver and box

Type:  
 BEGA Product:  
 Project:  
 Color:  
 Options:  
 Model:



The ground-mounted luminaire mount directly to BEGA Project rated IP65.

BEGA-USA 1000 BEGA Way, Carpinteria, CA 93013 (805)684-0533 FAX (805)566-9474 www.bega-usa.com  
 Copyright © BEGA-USA 2016 Updated 04/16



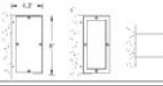
**UGI-31611 WALL LIGHT (WL)**

Gino 4



Surface

**Physical Data**  
 Length: 9"  
 Height: 3.5"  
 IP65 - Suitable For Wet Locations  
 IK04 - Impact Resistant (Vandal Resistant)



Lamp	LED Color	Finish Color	Lens
Be LED	3000-3500K	Black, White, Silver, Bronze, Gold, Copper, Nickel, Gunmetal, Grey, Green, Blue, Red, Purple, Yellow, Orange, Pink, Brown, Tan, Cream, Ivory, White, Clear, Frosted	C - Clear F - Frosted

Ordering Example	UGI-31611	Be LED	3000K	Black	C	3000K	3000K	3000K
------------------	-----------	--------	-------	-------	---	-------	-------	-------

PROJECT: \_\_\_\_\_ DATE: \_\_\_\_\_ QUANTITY: \_\_\_\_\_  
 TYPE: \_\_\_\_\_ NOTE: \_\_\_\_\_

**LINEAR SOFFIT LIGHTS (LSL)**

**DS | SPECIFICATION GUIDE**

PERFORMANCE AT 4000K	DOWN/LUMEN OUTPUT	INPUT WATTS	SPREAD
High	HE Tech 829 in/ft	19 W/ft	85 in/ft
Standard	WSP 668 in/ft	19 W/ft	70 in/ft
Low	HE Tech 414.5 in/ft	8 W/ft	85 in/ft
Standard	WSP 332.5 in/ft	8 W/ft	70 in/ft

**LIGHT LOSS FACTORS**

BASELINE	GF FACT	LM LOSS	DIRT LOSS	OH
LSL	1.0%	3500K-65%	50-75%	50-75%
WSP	1.0%	3500K-65%	50-75%	50-75%

**INSTALLATION OPTIONS**

DS	LENGTH OR PATTERN TYPE	OUTPUT	LED CCT	VOLTAGE	DIRTY OPTS
DS	Standard Length Excel Length	LS LED Standard Output LS LED High Output C, LED Custom Output	30 3000K 35 3500K 40 4000K	120V-277V 3 247V	HE Tech KS Alum Anod. VSP

**MOUNTING**

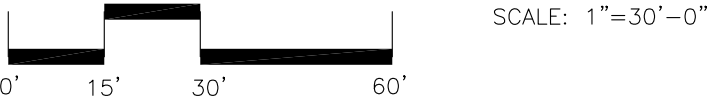
SD	Flush Overlay Mount Flange	T	Surface Mount	D	Recessed Mount	EC	Emergency - Inverter	D	Emergency - Battery
SP	1" Flange	W	Wide Flange	CS	Custom	ES	Emergency - LED	EP	Emergency - Daylight Sensor

**OPTIONS**

MRL	MRL-LED	W	Wide Mount	CS	Custom	ES	Emergency - LED	EP	Emergency - Daylight Sensor
N	New York City Code	W	Wide Mount	CS	Custom	ES	Emergency - LED	EP	Emergency - Daylight Sensor
N	New York City Code	W	Wide Mount	CS	Custom	ES	Emergency - LED	EP	Emergency - Daylight Sensor
N	New York City Code	W	Wide Mount	CS	Custom	ES	Emergency - LED	EP	Emergency - Daylight Sensor
N	New York City Code	W	Wide Mount	CS	Custom	ES	Emergency - LED	EP	Emergency - Daylight Sensor
N	New York City Code	W	Wide Mount	CS	Custom	ES	Emergency - LED	EP	Emergency - Daylight Sensor
N	New York City Code	W	Wide Mount	CS	Custom	ES	Emergency - LED	EP	Emergency - Daylight Sensor
N	New York City Code	W	Wide Mount	CS	Custom	ES	Emergency - LED	EP	Emergency - Daylight Sensor
N	New York City Code	W	Wide Mount	CS	Custom	ES	Emergency - LED	EP	Emergency - Daylight Sensor
N	New York City Code	W	Wide Mount	CS	Custom	ES	Emergency - LED	EP	Emergency - Daylight Sensor

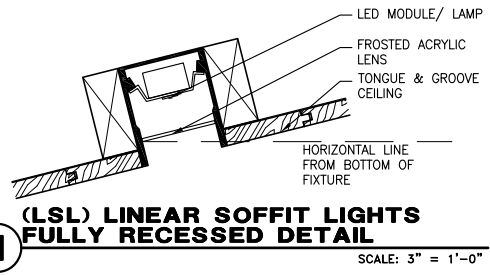
5,000SF STORAGE AREA & ADMINISTRATION ADDITION

**FELLOWSHIP HALL SITE LIGHTING PLAN**



SCALE: 1"=30'-0"

FIXTURE TYPE	QUANTITY	WATTS	LUMENS
(IGL) BEGA IN-GRADE (DOWN) LIGHTS	7	1.5W	10LM
(LSL) A-LIGHT LINEAR SOFFIT (DOWN) LIGHTS	4	5W PER FT	332.5LM
(WL) LIGMAN WALL (DOWN) LIGHTS	8	8W	564LM



date	07-15-17	job no.	150305
drawn by	SC/ST	checked by	LE
<b>SHEET TITLE</b>			
<b>REVISION</b>			
THIS DRAWING IS AN INSTRUMENT OF SERVICE. IT REMAINS THE PROPERTY OF LAWRENCE ENYART, ARCHITECT. IT MAY NOT BE REPRODUCED OR COPIED IN WHOLE OR IN PART WITHOUT THE EXPRESSED WRITTEN PERMISSION OF LAWRENCE ENYART, ARCHITECT. IT MAY ONLY BE USED FOR THE ORIGINAL PURPOSE INTENDED. ALL RIGHTS RESERVED.			
© Copyright 2017, LEA-Architects, LLC			

**CAMELBACK BIBLE CHURCH FELLOWSHIP HALL ADDITION**

3902 E. STANFORD PARADISE VALLEY, AZ

**LEA - Architects, LLC**  
 1730 EAST NORTHERN PHOENIX, AZ  
 ARCHITECTURE PLANNING INTERIORS CONSTRUCTION MGMT.

**REGISTERED ARCHITECT**  
 CERTIFICATE NO. ENYART  
 LAWRENCE ENYART  
 PHOENIX, ARIZONA, U.S.A.

EXPIRES 09/30/17  
**PRELIMINARY CONSTRUCTION**



## Drive-over surface-mounted luminaires to illuminate ground surfaces

**Outer Housing:** Constructed of high tensile strength, copper free die-cast aluminum alloy with two (2) light openings. Slotted, stainless steel base plate allows top casting to rotate to any orientation. Die castings are marine grade, copper free ( $\leq 0.3\%$  copper content) A360.0 aluminum alloy.

**Enclosure:** One piece heavy duty die cast aluminum body with clear borosilicate lens. Reflector of pure anodized aluminum. All aluminum used in the construction is marine grade and copper free. All fasteners are stainless steel. Two (2) molded, one piece, high temperature silicone gaskets on top and bottom of the lens.

**Electrical:** 1.3W LED luminaire, 1.5 total system watts,  $-30^{\circ}\text{C}$  start temperature. Remote 24V DC driver required. LED module(s) are available from factory for easy replacement. Standard LED color temperature is 3000K with an 85 CRI. Available in 4000K (85 CRI); add suffix K4 to order.

**Note:** LEDs supplied with luminaire. Due to the dynamic nature of LED technology, LED luminaire data on this sheet is subject to change at the discretion of BEGA-US. For the most current technical data, please refer to [www.bega-us.com](http://www.bega-us.com).

**Mounting:** Luminaire mounts directly to ground-mounted weathertight wiring box, by BEGA, suitable for 1/2" side or bottom conduit entry.

**Note: The luminaires must not be installed in traffic lanes where they are subject to horizontal pressure from vehicles braking, accelerating and changing direction.** A foundation must be supplied by the contractor designed to bear the static pressure loads from vehicles with pneumatic tires. The luminaires are designed to withstand a static load of 2,200 lbs.

**Finish:** All BEGA standard finishes are polyester powder coat with minimum 3 mil thickness. Available in standard BEGA Black (BLK). Custom colors not available.

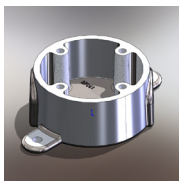
**CSA** certified to U.S. and Canadian standards for wet locations. Protection class IP67

**Weight:** 2.1 lbs.

### Remote 24 V driver Options:

**580** Remote 25W LED driver and box

**591** Remote 50W dimming LED driver and box

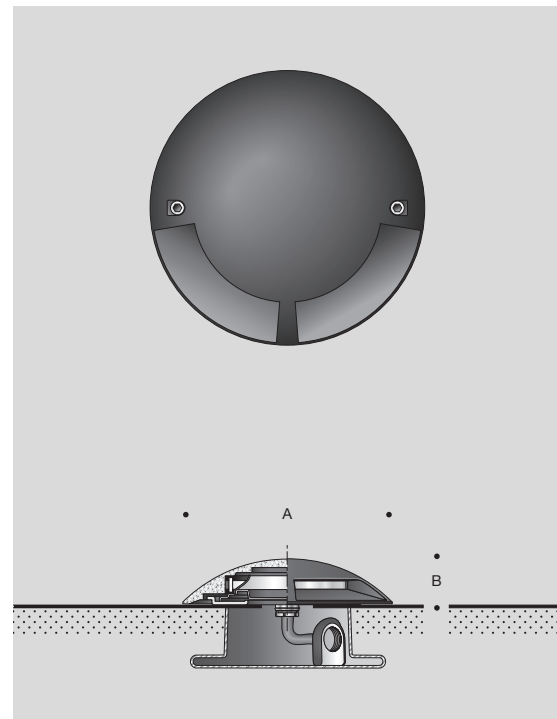


The ground-mounted luminaires mount directly to BEGA in-ground wiring box.

180° port	Lamps		
		A	B
<b>77 069*</b>	1.3W LED	6 <sup>3</sup> / <sub>8</sub>	1 <sup>1</sup> / <sub>2</sub>

\*Remote 24V driver required

Type:  
 BEGA Product:  
 Project:  
 Voltage:  
 Color:  
 Options:  
 Modified:



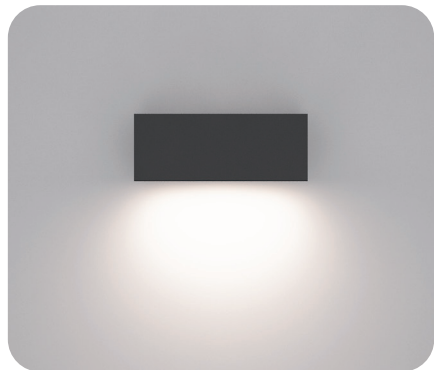


# UGI-31611

## Gino 4



Surface

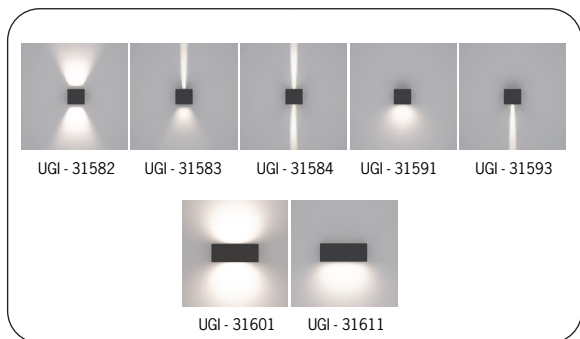
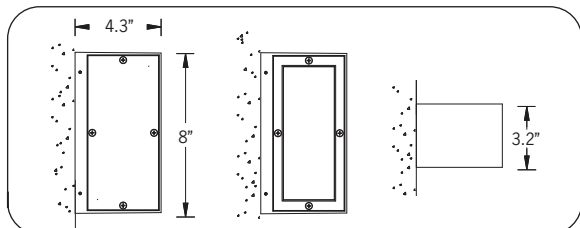


A range of small, square and rectangular wall mounted luminaires with options of upward or downward light distributions. Ideally suited to illuminate the wall and surfaces in front of wall and for light accents on vertical surfaces using high efficiency LED's. The Gino is suitable for indoor and outdoor applications and provides a clean, visually appealing solution for small, unobtrusive wall mounted luminaires. This luminaire is available in 2 different sizes and in combinations of down, up or up/down light distributions. The Gino 1 and Gino 2 have a decorative spike option for added lighting effects. The Gino 3 and 4 mounts over a 2"x4" switchbox mounted horizontally. Added securing holes are provided to secure the luminaire to the wall surface. Frosted or clear lenses are available.

### Physical Data

Length • 8"  
Height • 3.2"  
Weight • 3.5 lbs

IP65 • Suitable For Wet Locations  
IK04 • Impact Resistant (Vandal Resistant)



#### Aluminum Casting

**Less than 0.1% copper content – Marine Grade LM6 Aluminum** High Pressure die casting provides excellent mechanical strength, clean detailed product lines and excellent heat dissipation.

#### Pre paint

**8 step degrease and phosphate process** that includes deoxidizing and etching as well as a zinc and nickel phosphate process before product painting.

#### Memory Retentive -Silicon Gasket.

Provided with special injection molded "fit for purpose" long life high temperature **memory retentive silicon gaskets**. Maintains the gaskets exact profile and seal over years of use and compression.

#### Thermal management.

LM6 Aluminum is used for its **excellent mechanical strength and thermal dissipation properties** in low and high ambient temperatures. The superior thermal heat sink design by Ligman used in conjunction with the driver, controls thermals below critical temperature range to ensure maximum luminous flux output, as well as providing long LED service life and ensuring less than 10% lumen depreciation at 50,000 hours.

#### Surge Suppression

**Standard 10kv surge suppressor** provided with all fixtures.

#### BUG Rating

Contact Factory

#### Finishing

All Ligman products go through an extensive finishing process that includes fettling to improve paint adherence.

#### Paint.

**UV Stabilized 4.9Mil thick powder coat paint** and baked at 200 Deg C.

This process ensures that Ligman products can withstand harsh environments. Rated for use in natatoriums.

#### Hardware.

Provided Hardware is **Marine grade 316 Stainless steel**.

#### Anti Seize Screw Holes

Tapped holes are infused with a **special anti seize compound** designed to prevent seizure of threaded connections, due to electrolysis from heat, corrosive atmospheres and moisture.

#### Crystal Clear Low Iron Glass Lens.

Provided with tempered, impact resistant **crystal clear low iron glass** ensuring no green glass tint.

#### Optics & LED

Precise optic design provides **exceptional light control and precise distribution of light**. LED CRI > 80

#### Lumen - Maintenance Life

**L80 /B10 at 50,000 hours** (This means that at least 90% of the LED still achieve 80% of their original flux)

#### Standard Options

**Lamp**  
8w LED  
564 Lumens

**LED Color**  
W27 • 2700K  
W30 • 3000K  
W40 • 4000K

**Finish Color**

01 - Black - RAL 9011	01
02 - Dark Grey - RAL 7043	02
03 - White - RAL 9003	03
04 - Metallic Silver - RAL 9006	04
05 - Matte Silver - RAL 9006	05
06 - Bronze - RAL 6014	06
07 - Custom RAL	06

**Lens**  
C • Clear  
F • Frosted

#### Options (Consult Factory for Pricing)

4J - Mounting Plate for 4" Junction Box

Ordering Example : UGI - 31611 - 8w - W30 - 02 - 120/277v - Options

UGI	Lamp	LED Color	Color	Lens	Voltage	Options
31611	8w LED	W27   2700K W30   3000K W40   4000K	01   Black 02   Dark Grey 03   White 04   Metallic Silver 05   Matte Silver 06   Bronze 07   Custom RAL	C   Clear Lens F   Frosted Lens	120/277v Other (Specify)	4J   Mounting Plate for 4" JBox

PROJECT:  DATE:  QUANTITY:

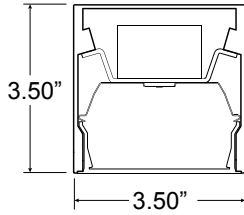
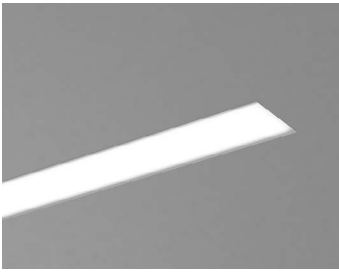
TYPE:  NOTE:

Head Office:  
7144 NW Progress Ct Hillsboro, Oregon 97124  
Tel: 503-645-0500 Fax: 503-645-8100 www.ligmanlightingusa.com



Ligman Lighting USA reserves the right to change specifications without prior notice, please contact factory for latest information. Due to the continual improvements in LED technology data and components may change without notice.





ORDERING CODE

**D5**

PROJECT INFO

TYPE

DATE

QUANTITY

PERFORMANCE AT 4000K

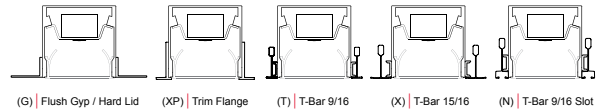
OUTPUT	LENS	NOMINAL LUMEN OUTPUT	INPUT WATTS	EFFICACY
High	HE Tech	829 lm/ft	10 W/ft	85 lm/W
	WISP	665 lm/ft	10 W/ft	70 lm/W
Standard	HE Tech	414.5 lm/ft	5 W/ft	85 lm/W
	WISP	332.5 lm/ft	5 W/ft	70 lm/W

Please consult factory for custom lumen output and wattage.

LIGHT LOSS FACTORS

	OUTPUT	LED CCT	CRI
BASELINE	LH	4000K	80+ CRI
	LS - 50%	3500K - 97%	90+ CRI - 80%
		3000K - 93%	

MOUNTING OPTIONS



D5	SERIES	LENGTH OR PATTERN TYPE	OUTPUT	LED CCT	VOLTAGE	DIRECT OPTICS
D5	<b>M_</b>	Nominal Length* Exact Length**	<b>LS</b> LED Standard Output <b>LH</b> LED High Output <b>C_</b> LED Custom Output*	<b>30</b> 3000K <b>35</b> 3500K <b>40</b> 4000K	<b>U</b> Universal 120V - 277V <b>3</b> 347V	<b>HE</b> HE Tech™ <b>KS</b> Awash Kicker + WISP
	<b>PL_</b>	"L" Shape Flat***				
	<b>PLCW_</b>	"L" Wall to Ceiling***				
	<b>PLWW_</b>	"L" Wall to Adjacent Wall***				
	<b>PU_</b>	"U" Shape Flat***				
	<b>PUCW_</b>	"U" Wall to Ceiling to Wall***				
	<b>PUWW_</b>	"U" Wall to Wall to Wall***				
	<b>PR_</b>	Rectangle / Square***				
		*Specify in feet to the nearest foot (i.e. N12) **Specify in inches to then nearest 1/8 (i.e. M180.125) ***Specify in inches to the nearest 1/8 (See Pattern Guide for details)	*Available from 25% to 125% of LED High Output			

MOUNTING	FINISH*	DIMMING	EMERGENCY	SENSORS
<b>G</b> Flush Gyp / Mud Over Flange <b>RG</b> 1" Regressed Gyp / Mud Over Flange <b>XP</b> 1/2" Trim Flange <b>T</b> T-Bar 9/16" <b>X</b> T-Bar 15/16" <b>N</b> T-Bar 9/16 Slot <b>T4</b> 4" On Center Standard T-Bar 9/16" <b>N4</b> 4" On Center Slot T-Bar 9/16"	<b>T</b> a·lightanium™ <b>W</b> Satin White <b>B</b> Satin Black <b>O_</b> Other**	<b>D</b> Standard 0-10 dimming* <b>D1</b> Lutron Eco H series (LDE1) <b>D3</b> Other Dimming**	<b>EC</b> Emergency - circuited <b>E_</b> Emergency - battery*	<b>O</b> Occupancy Sensor* <b>P</b> Photocell / Daylight Sensor** <b>OP</b> Occupancy & Daylight Sensor
*Housing slightly regressed	**RG, XP, T4, N4 mounting types only ***Specify RAL#	*Dimming to 1% stated for standard 0-10v dimming **Specify model/series	*(1) ILB-SL-CP12 (1200lm for 90min). Specify desired quantity of batteries. Not available on fixtures < 4" length. Not available for 347V.	Wattstopper FS-205 (Ø1") Wattstopper FD-301 wired for daylight harvesting. Requires 0-10v dimming.

OPTIONS
<b>MRL_</b> MR16 LED*
<b>MRH_</b> MR16 Halogen*
<b>M</b> Multi-Circuit**
<b>N</b> New York City Code
<b>K</b> Natatorium Application
<b>Q</b> Wet Location (Contact Design Assist)
<b>CRI</b> 90+ CRI
<b>CP</b> Chicago Plenum
*Enter quantity. Submit MR16 addendum **Submit multi-circuiting requirements



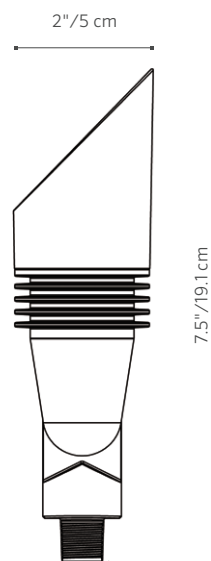


Similar in style to its bigger brother the NP, the FB fits nicely into smaller landscapes and tight spaces. Accommodating up to a 3 LED Board, the FB offers all the same up light benefits of the NP in a more compact package.

### FB: Up Light

NUMBER OF LEDs:	1	3	ZDC
HALOGEN LUMEN OUTPUT EQUIVALENT:	10 Watt	20 Watt	10 Watt
USEFUL LED LIFE (L70):	50,000 hrs avg	50,000 hrs avg	50,000 hrs avg
INPUT VOLTAGE:	10 to 15V	10 to 15V	11 to 15V
VA TOTAL*:	2.4	4.5	7.2
WATTS USED:	2.0	4.2	6.0
LUMENS PER WATT (EFFICACY):	31	40	28
TOTAL LUMENS:	60	155	90
CRI (Ra):	79	78	81
CBCP (CENTER BEAM CANDLE POWER):	233	621	120
CCT:			
AMBER FILTER	2700K	2700K	N/A
FROSTED FILTER	3900K	3900K	N/A
GREEN FILTER	4500K	4500K	N/A
BLUE FILTER	5200K	5200K	N/A

\*(Use this number to size the transformer)





# FB: Up Light

**FACTORY INSTALLED OPTIONS:** Order 1 + 2 (optional) + 3 + 4

Step	Description	Code
1	FIXTURE	FB
2	LUXOR OPTION	ZD, ZDC <sup>†</sup> (Color)
3	LAMP	1LED, 3LED, _____ <sup>†</sup>
4	FINISH	WG, FW, AL, BZ, DG, WI, SB, FB

**EXAMPLE:** **FB-ZD-3LED-SB** = FB - ZD Option - 3LED Board - Sedona Brown Finish

<sup>†</sup>Fixtures specified with ZDC Technology™ are available only in one circuit board configuration. Do not specify a number of LEDs when ordering.

**FIELD INSTALLED OPTIONS:** Order Individually

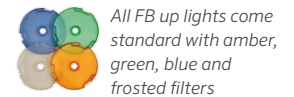
Mounts
Super Slot Spike (Included) (753900) 2" x 7"
Long Slot Spike (250015840000) 2.5" x 10"
SuperJ-Box (SJ-XX**) 2.5" x 12"
Post Mount (PM-XX**) 2.5" x 13"
Mini J-Box (MJ-050-XX**) 3.5" x 1.3"
TreeBox (TB-XX**) 5.4" x 1.9"
Gutter Mount (GM-SS) 4.0" x 4.0"
Wall Plate: 1-gang (WP-1G-050-XX**) 3.4" x 5.1"
Wall Plate: Round (WP-RD-050-XX**) 5.0" Diam.
Coupling: Straight (COUP-XX**) 1.3" x 2.0"
Coupling: 90-deg (ELBW-050-SS**) 1.3" x 2.0"
Coupling: T-mount (TMNT-050-XX**) 3.0" x 2.2"
Riser: Male Threaded (YY-R-XX) 0.8" Diam., ½ NPSM

Lens Accessories			
LENS OPTIONS	1LED	3LED	
<b>Diffuser</b> 18° (preassembled)	770600	771300	
<b>Flood Lens</b> 30-32° (1 notch)	1LEDFLENS	3LEDFLENS	
<b>Wide Flood Lens</b> 56-58° (2 notches)	1LEDWFLENS	3LEDWFLENS	
<b>Hex Baffle</b> MR-16 Size	250015260000	250015260000	
<b>Linear Spread Lens</b> MR-16 Size	250013550000	250013550000	
<b>Solite Spread Lens</b> MR-16 Size	250015240000	250015240000	

**POWDER COAT**

	<b>WG</b> = White Gloss
	<b>FW</b> = Flat White
	<b>AL</b> = Almond
	<b>BZ</b> = Bronze Metallic
	<b>DG</b> = Desert Granite
	<b>WI</b> = Weathered Iron
	<b>SB</b> = Sedona Brown
	<b>FB</b> = Flat Black

The FB includes choice of LED board, choice of finish, 4 ft lead wire and a Super Slot Spike.



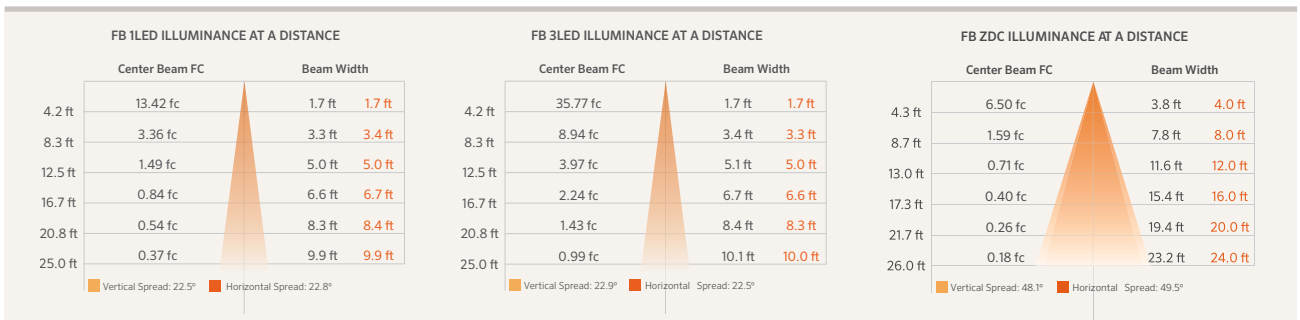
\*\* Denotes finish code

Beam angle is calculated using LM-79 method for SSL Luminaires: "Beam angle is defined as two times the vertical angle at which the intensity is 50% of the maximum."

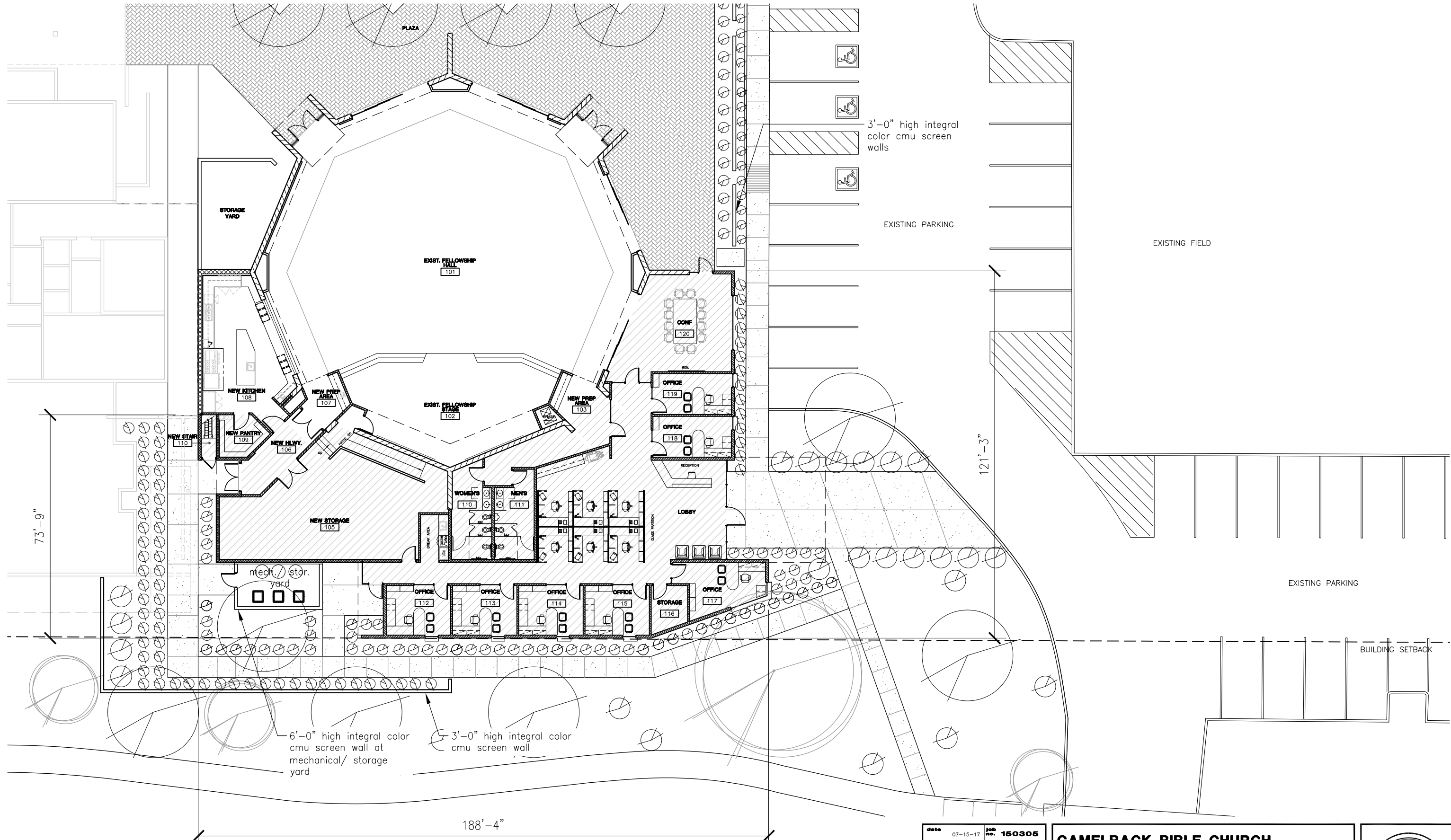


**EXAMPLE:** **250015840000** = Long Slot Spike

**PHOTOMETRICS:**

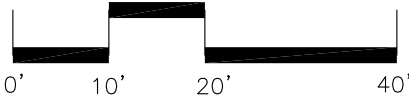






 5,000SF STORAGE AREA & ADMINISTRATION ADDITION

### FELLOWSHIP HALL FLOOR PLAN



SCALE: 1"=20'-0"




date	07-15-17	job no.	150305
drawn by	SC/ST	checked by	LE
<b>SHEET TITLE</b>			
<b>REVISION</b>			
<small>THIS DRAWING IS AN INSTRUMENT OF SERVICE. IT REMAINS THE PROPERTY OF LAWRENCE ENYART, ARCHITECT. IT MAY NOT BE REPRODUCED OR COPIED IN WHOLE OR IN PART WITHOUT THE EXPRESSED WRITTEN PERMISSION OF LAWRENCE ENYART, ARCHITECT. IT MAY ONLY BE USED FOR THE ORIGINAL PURPOSE INTENDED. ALL RIGHTS RESERVED.          © Copyright 2017, LEA-Architects, LLC</small>			

**CAMELBACK BIBLE CHURCH  
FELLOWSHIP HALL ADDITION**

**3902 E. STANFORD  
PARADISE VALLEY, AZ**

**LEA - Architects, LLC**  
1730 EAST NORTHERN PHOENIX, AZ  
ARCHITECTURE PLANNING INTERIORS CONSTRUCTION MGMT.



EXPIRES 09/30/17  
**PRELIMINARY  
NOT FOR  
CONSTRUCTION**



Camelback Bible Church Fellowship Hall Addition  
view north-west towards administration entry

13'-0"  
T.O. PARAPET

17'-8"  
T.O. ROOF

Weathering steel plate window hoods  
8x4x16 Integral color stacked bond cmu

Weathering copper standing seam panels  
Insulated window

Wood tongue & groove soffit

**LEA - ARCHITECTS, LLC**  
PHOENIX, ARIZONA  
© 2017  
WWW.LEA-ARCHITECTS.COM

date	07-15-17	job no.	150305
drawn by	SC/ST	checked by	LE
<b>SHEET TITLE</b>			
<b>REVISION</b>			
<small>THIS DRAWING IS AN INSTRUMENT OF SERVICE. IT REMAINS THE PROPERTY OF LAWRENCE ENYART, ARCHITECT. IT MAY NOT BE REPRODUCED OR COPIED IN WHOLE OR IN PART WITHOUT THE EXPRESSED WRITTEN PERMISSION OF LAWRENCE ENYART, ARCHITECT. IT MAY ONLY BE USED FOR THE ORIGINAL PURPOSE INTENDED. ALL RIGHTS RESERVED. © Copyright 2017, LEA Architects, LLC</small>			

**CAMELBACK BIBLE CHURCH FELLOWSHIP HALL ADDITION**

3902 E. STANFORD  
PARADISE VALLEY, AZ

**LEA - Architects, LLC**  
1730 EAST NORTHERN PHOENIX, AZ  
ARCHITECTURE PLANNING INTERIORS CONSTRUCTION MGMT.

REGISTERED ARCHITECT  
LAWRENCE ENYART  
ARIZONA, U.S.A.

EXPIRES 09/30/17  
**PRELIMINARY NOT FOR CONSTRUCTION**



Camelback Bible Church Fellowship Hall Addition  
south elevation - view from stanford drive



**LEA - ARCHITECTS, LLC**  
PHOENIX, ARIZONA  
© 2017  
WWW.LEA-ARCHITECTS.COM

date	07-15-17	job no.	150305
drawn by	SC/ST	checked by	LE
<b>SHEET TITLE</b>			
<b>REVISION</b>			
<small>THIS DRAWING IS AN INSTRUMENT OF SERVICE. IT REMAINS THE PROPERTY OF LAWRENCE ENYART, ARCHITECT. IT MAY NOT BE REPRODUCED OR COPIED IN WHOLE OR IN PART WITHOUT THE EXPRESSED WRITTEN PERMISSION OF LAWRENCE ENYART, ARCHITECT. IT MAY ONLY BE USED FOR THE ORIGINAL PURPOSE INTENDED. ALL RIGHTS RESERVED. © Copyright 2017, LEA-Architects, LLC</small>			

**CAMELBACK BIBLE CHURCH FELLOWSHIP HALL ADDITION**

**3902 E. STANFORD PARADISE VALLEY, AZ**

**LEA - Architects, LLC**  
1730 EAST NORTHERN PHOENIX, AZ  
ARCHITECTURE PLANNING INTERIORS CONSTRUCTION MGMT.

REGISTERED ARCHITECT  
LAWRENCE ENYART  
ARIZONA, U.S.A.

EXPIRES 09/30/17  
**PRELIMINARY NOT FOR CONSTRUCTION**



Camelback Bible Church Fellowship Hall Addition  
east elevation - view from parking area



Weathering copper standing seam panels  
Wood tongue & groove soffit  
Insulated windows

8x4x16 Integral color stacked bond cmu  
Weathering steel plate window hoods

17'-8" T.O. ROOF  
13'-0" T.O. PARAPET

3'-0" T.O. SCREEN WALL

**LEA - ARCHITECTS, LLC**  
PHOENIX, ARIZONA  
© 2017  
WWW.LEA-ARCHITECTS.COM

date	07-15-17	job no.	150305
drawn by	SC/ST	checked by	LE
<b>SHEET TITLE</b>			
<b>REVISION</b>			
<small>THIS DRAWING IS AN INSTRUMENT OF SERVICE. IT REMAINS THE PROPERTY OF LAWRENCE ENYART, ARCHITECT. IT MAY NOT BE REPRODUCED OR COPIED IN WHOLE OR IN PART WITHOUT THE EXPRESSED WRITTEN PERMISSION OF LAWRENCE ENYART, ARCHITECT. IT MAY ONLY BE USED FOR THE ORIGINAL PURPOSE INTENDED. ALL RIGHTS RESERVED. © Copyright 2017, LEA-Architects, LLC</small>			

**CAMELBACK BIBLE CHURCH FELLOWSHIP HALL ADDITION**

**3902 E. STANFORD PARADISE VALLEY, AZ**

**LEA - Architects, LLC**  
1730 EAST NORTHERN PHOENIX, AZ  
ARCHITECTURE PLANNING INTERIORS CONSTRUCTION MGMT.

REGISTERED ARCHITECT  
LAWRENCE ENYART  
ARIZONA, U.S.A.  
EXPIRES 09/30/17  
**PRELIMINARY NOT FOR CONSTRUCTION**



# Camelback Bible Church - Fellowship Hall Addition

(preliminary landscape plan)

## project consultants

### landscape architect:

DESIGN ETHIC, LLC  
7201 E. CAMELBACK #250  
SCOTTSDALE, ARIZONA 85251  
CONTACT: BRANDON PAUL  
PHONE: 480.225.7077  
EMAIL: bpaul@designethic.net

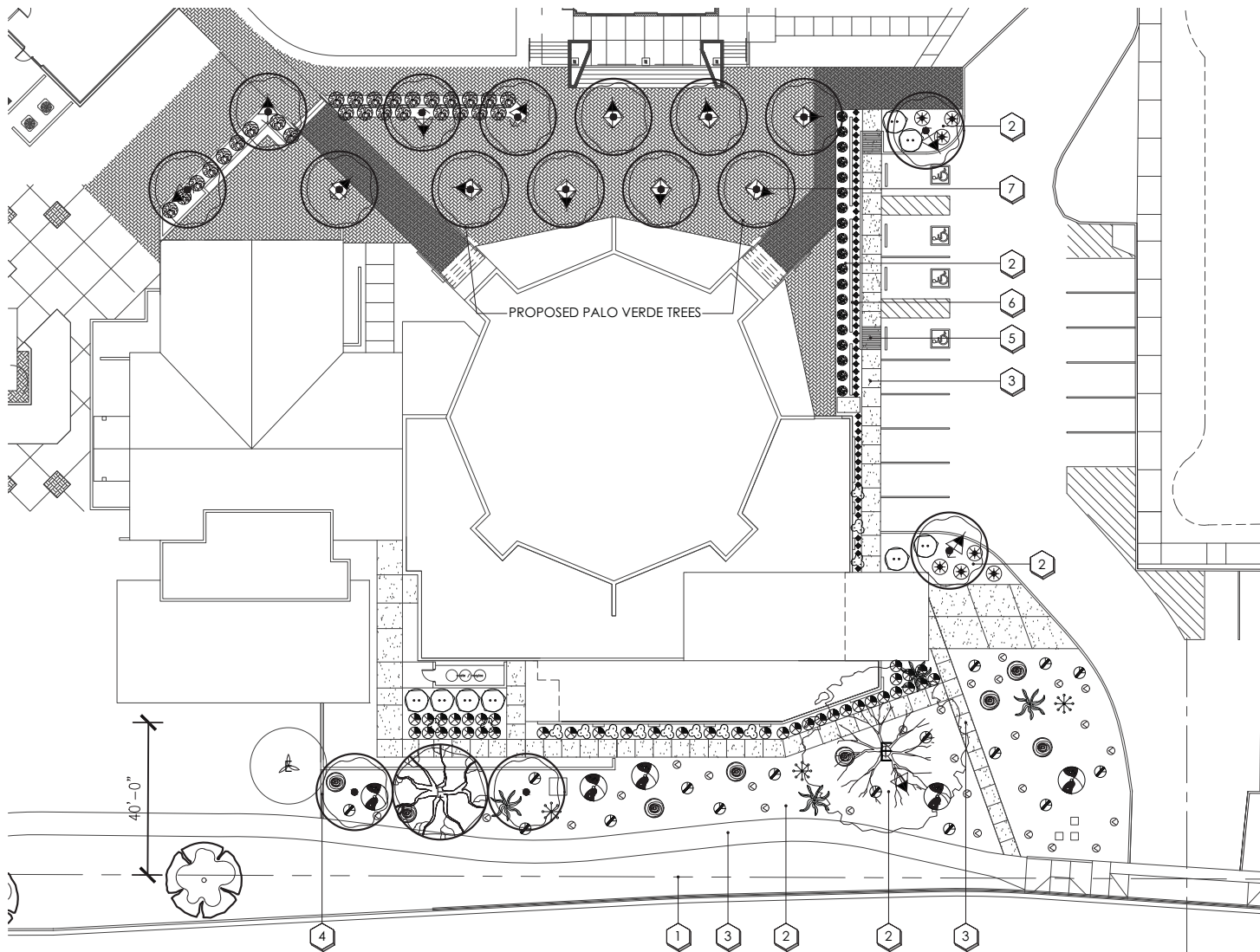
### architecture:

LEA - ARCHITECTS, LLC  
1730 E. NORTHERN AVE, SUITE 110  
PHOENIX, AZ 85020  
PROJECT CONTACT: LANCE ENYART  
PHONE: 602.943.7511  
EMAIL: lance@lea-architects.com

## site data

ZONING:  
NET SITE AREA:

SUP-P  
9.57 ACRES



## planting key notes

- 1 PROPERTY LINE / RIGHT OF WAY LINE
- 2 DECOMPOSED GRANITE IN ALL PLANTING AREAS
- 3 SIDEWALK.
- 4 CONCRETE HEADER. SEE SHEET L, DETAIL.
- 5 ACCESSIBLE RAMP. SEE CIVIL ENG. PLANS.
- 6 SCREEN WALL. SEE ARCH. PLANS.
- 7 LOW VOLTAGE LIGHTS, TYP. 15 TOTAL; SEE LIGHTING LEGEND FOR REFERENCE.

## existing plant legend

botanical name	common name
PROSOPIS CHILENSIS 'THORNLESS'	THORNLESS CHILEAN MESQUITE
PROSOPIS PUBESCENS	SCREWBEAN MESQUITE
PYRUS CALLERYANA	EVERGREEN PEAR
ULMUS PARVIFOLIA	EVERGREEN ELM

## plant legend

botanical name	common name
PARKINSONI HYBRID 'AZT'	'AZT' THORNLESS PALO VERDE
CORDIA PARVIFOLIA	LITTLELEAF CORDIA
ENCELIA FARINOSA	BRITTLEBUSH
ERICAMERIA LARICIFOLIA	TURPENTINE BUSH
LARREA TRIDENTATA	CREOSOTE
OLEA EUROPAEA 'LITTLE OLLIE'	LITTLE OLLIE DWARF OLIVE

ACCENT LIGHTS
• ALOE X. BLUE ELF
• BLUE ELF ALOE
* FEROCACTUS CYLINDRACEUS
• COMPASS BARREL
* FOUQUIERIA SPLENDENS
• OCOTILLO
• MUHLENBERGIA CAPILLARIS
• REGAL MIST
• LOPHOCEREUS SCHOTTII
• MONSTROSE
• TOTEM POLE CACTUS
* OPUNTIA ENGELMANNII
• ENGELMANN'S PRICKLY PEAR
• PEDILANTHUS MACROCARPUS
• SLIPPER PLANT

GROUND COVER
• AMBROSIA DELTOIDEA
• BURSAGE
• SPHAGNETICOLA TRILOBATA
• YELLOW DOT

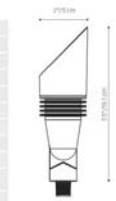
INERTS
2 1" MINUS DECOMPOSED GRANITE
• TABLE MESA BROWN
CONCRETE HEADER
PLAIN CONCRETE

## FXLuminaire



## FB: Up Light

NUMBER OF LEADS	1	3	20C
HALOGEN LUMEN OUTPUT EQUIVALENT	50 Watt	20 Watt	50 Watt
USEFUL LIFE (HRS)	50,000 hrs avg	50,000 hrs avg	50,000 hrs avg
INPUT VOLTAGE	0 to 27V	0 to 27V	0 to 27V
VA TOTAL	2.4	4.5	7.2
WATTS USED	2.0	4.2	6.0
LUMENS PER WATT EFFICIENCY	35	45	28
TOTAL LUMENS	70	155	168
CRY DRG	7%	7%	8%
CBW	100%	100%	100%
SLIPPER BEAM CANDLE POWER	238	6.0	100
CCT			
AMBER FILTER	2700K	2700K	N/A
FROSTED FILTER	3000K	3000K	N/A
GREEN FILTER	4000K	4000K	N/A
BLUE FILTER	5000K	5000K	N/A

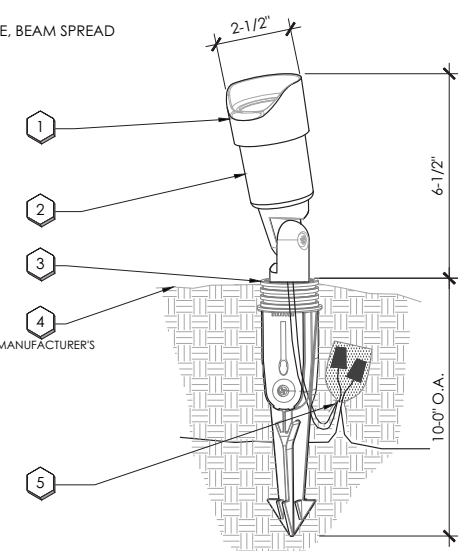


## KEYNOTES:

- 1 UP LIGHT FIXTURE: SEE PLAN LEGEND FOR WATTAGE, BEAM SPREAD AND ACCESSORIES.
- 2 AIM FIXTURE A MINIMUM OF 10° OFF VERTICAL TO ALLOW WATER AND DIRT TO DRAIN OFF LENS CAP
- 3 CDS MOUNT
- 4 FINISHED GRADE
- 5 LOW VOLTAGE CABLE WITH LITESPLICE, LEAVE 18" MIN. LOOP COILED BELOW FIXTURE FOR SERVICE

## NOTES:

1. INSTALLATION TO BE COMPLETED IN ACCORDANCE WITH MANUFACTURER'S SPECIFICATIONS.

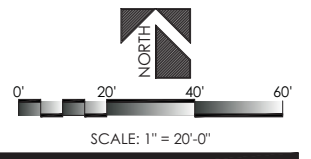
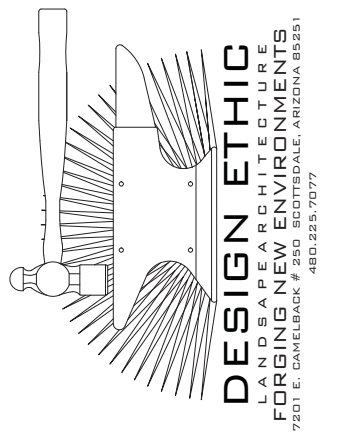


A CDS MOUNT UP LIGHT

NOT TO SCALE

## lighting legend

SYMBOL	FIXTURE APPLICATION	PART NUMBER	DESCRIPTION	WATTS	LUM	QTY
▲	UPLIGHT	FB-ZD-1LED-NP	NICKEL, 1LED BOARD, COLOR FILTERS, 4.5 VA, GROUND MOUNT SPIKE, NICKEL PLATE FINISH	4.2	155	15
T#	TRANSFORMER	LZD-300-M	STAINLESS STEEL, 300W, DIGITAL ZONING AND DIMMING CONTROL W/ LCD DISPLAY			-



CAMELBACK BIBLE CHURCH  
3902 EAST STANFORD DRIVE  
PARADISE VALLEY, AZ 85253

PROJECT:

SHEET TITLE:

JOB NO: 17-035  
DATE:  
DRAWN BY: B. PAUL  
SUBMITTED: 08.01.2017  
REVISED:

SHEET



CALL TWO WORKING DAYS BEFORE YOU DIG  
602-263-1100  
1-800-STAKE-IT  
(OUTSIDE MARICOPA COUNTY)