

SCALE	DATE	PROJECT NUMBER
1" = 40'	05/02/17	16-343
DRAWN BY	DATE	DESCRIPTION
MAILED		



EL CHORRO LODGE
BUILDING ADDITIONS
 5550 EAST LINCOLN DRIVE
 PARADISE VALLEY, AZ 85233

ideation
 DESIGN GROUP
 PROJECT, ARCHITECTURAL, INTERIOR DESIGN, FLOORPLAN DESIGN, ARCHITECTURE



PROJECT NO. **SP1**

SITE AND PROJECT DATA

OWNER: **BAYTOL, LLC**
 10000 N. 124th Ave., Suite 100, Scottsdale, AZ 85258
 PHONE: (480) 344-1111

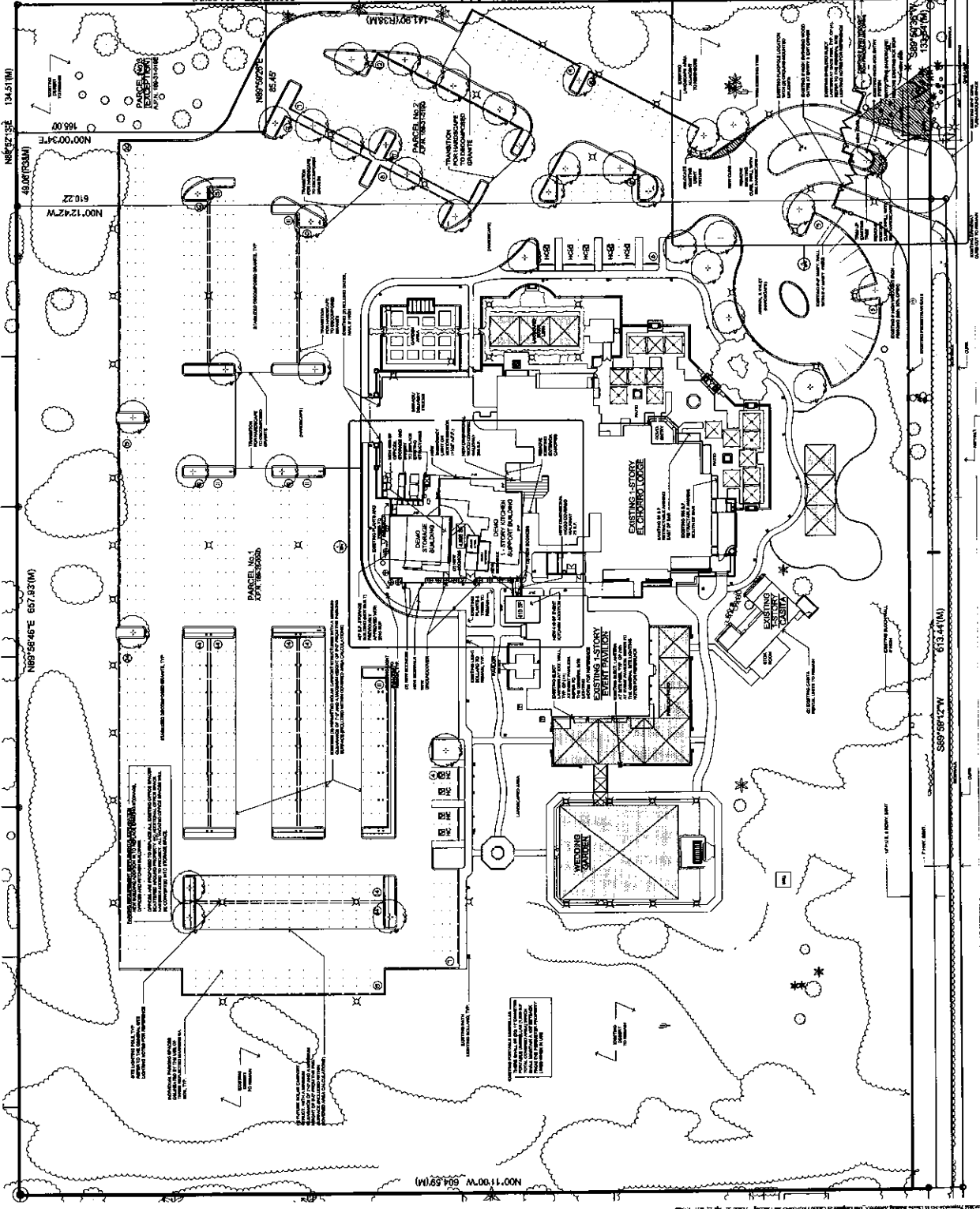
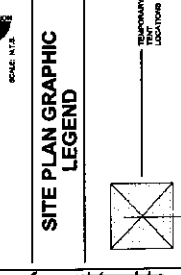
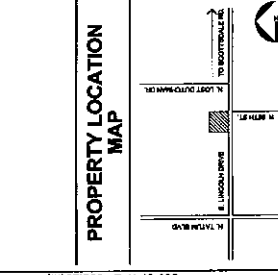
DESIGNER: **ideation DESIGN GROUP**
 10000 N. 124th Ave., Suite 100, Scottsdale, AZ 85258
 PHONE: (480) 344-1111

DATE: **05/02/17**

PROJECT NUMBER: **16-343**

GENERAL NOTES:

- ALL CONSTRUCTION SHALL BE IN ACCORDANCE WITH THE CITY OF SCOTTSDALE ORDINANCES AND THE AZ BUILDING CODE.
- ALL EXISTING UTILITIES SHALL BE MAINTAINED AND PROTECTED.
- ALL NEW CONSTRUCTION SHALL BE IN ACCORDANCE WITH THE CITY OF SCOTTSDALE ORDINANCES AND THE AZ BUILDING CODE.
- ALL EXISTING UTILITIES SHALL BE MAINTAINED AND PROTECTED.
- ALL NEW CONSTRUCTION SHALL BE IN ACCORDANCE WITH THE CITY OF SCOTTSDALE ORDINANCES AND THE AZ BUILDING CODE.
- ALL EXISTING UTILITIES SHALL BE MAINTAINED AND PROTECTED.
- ALL NEW CONSTRUCTION SHALL BE IN ACCORDANCE WITH THE CITY OF SCOTTSDALE ORDINANCES AND THE AZ BUILDING CODE.
- ALL EXISTING UTILITIES SHALL BE MAINTAINED AND PROTECTED.
- ALL NEW CONSTRUCTION SHALL BE IN ACCORDANCE WITH THE CITY OF SCOTTSDALE ORDINANCES AND THE AZ BUILDING CODE.
- ALL EXISTING UTILITIES SHALL BE MAINTAINED AND PROTECTED.
- ALL NEW CONSTRUCTION SHALL BE IN ACCORDANCE WITH THE CITY OF SCOTTSDALE ORDINANCES AND THE AZ BUILDING CODE.
- ALL EXISTING UTILITIES SHALL BE MAINTAINED AND PROTECTED.
- ALL NEW CONSTRUCTION SHALL BE IN ACCORDANCE WITH THE CITY OF SCOTTSDALE ORDINANCES AND THE AZ BUILDING CODE.
- ALL EXISTING UTILITIES SHALL BE MAINTAINED AND PROTECTED.
- ALL NEW CONSTRUCTION SHALL BE IN ACCORDANCE WITH THE CITY OF SCOTTSDALE ORDINANCES AND THE AZ BUILDING CODE.
- ALL EXISTING UTILITIES SHALL BE MAINTAINED AND PROTECTED.



SCALE: 1" = 40'

SITE PLAN

EL CHORRO LODGE BUILDING ADDITIONS 5550 EAST LINCOLN DRIVE PARADISE VALLEY, AZ 85225 ENLARGED SITE PLAN

ideation
 DESIGN GROUP
 10000 N. CENTRAL EXPRESSWAY, SUITE 1000
 PHOENIX, ARIZONA 85018
 PH: 602.998.9400
 WWW.IDEATIONDESIGN.COM



SP2

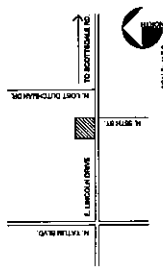
SITE AND PROJECT DATA

OWNER:	EL CHORRO LODGE
DESIGNER:	IDEATION DESIGN GROUP
TAX MAP ASSessor'S NUMBER:	PARADISE VALLEY, AZ 85225
CITY:	PHOENIX, AZ 85225
PLANNING AND ZONING DEPARTMENT:	300 N. CENTRAL EXPRESSWAY, SUITE 1000, PHOENIX, AZ 85018
EXISTING LOT COVERAGE (0.5778 S.F. / 446,048 S.F.):	1.1%
PROPOSED LOT COVERAGE (3,071 S.F. / 446,048 S.F.):	0.68%
PERCENT OF LOT COVERAGE:	0.68%
EXISTING TOTAL FLOOR AREA (S.F.):	446,048
PROPOSED TOTAL FLOOR AREA (S.F.):	456,000
EXISTING TOTAL FLOOR AREA (S.F.):	446,048
PROPOSED TOTAL FLOOR AREA (S.F.):	456,000
EXISTING TOTAL FLOOR AREA (S.F.):	446,048
PROPOSED TOTAL FLOOR AREA (S.F.):	456,000

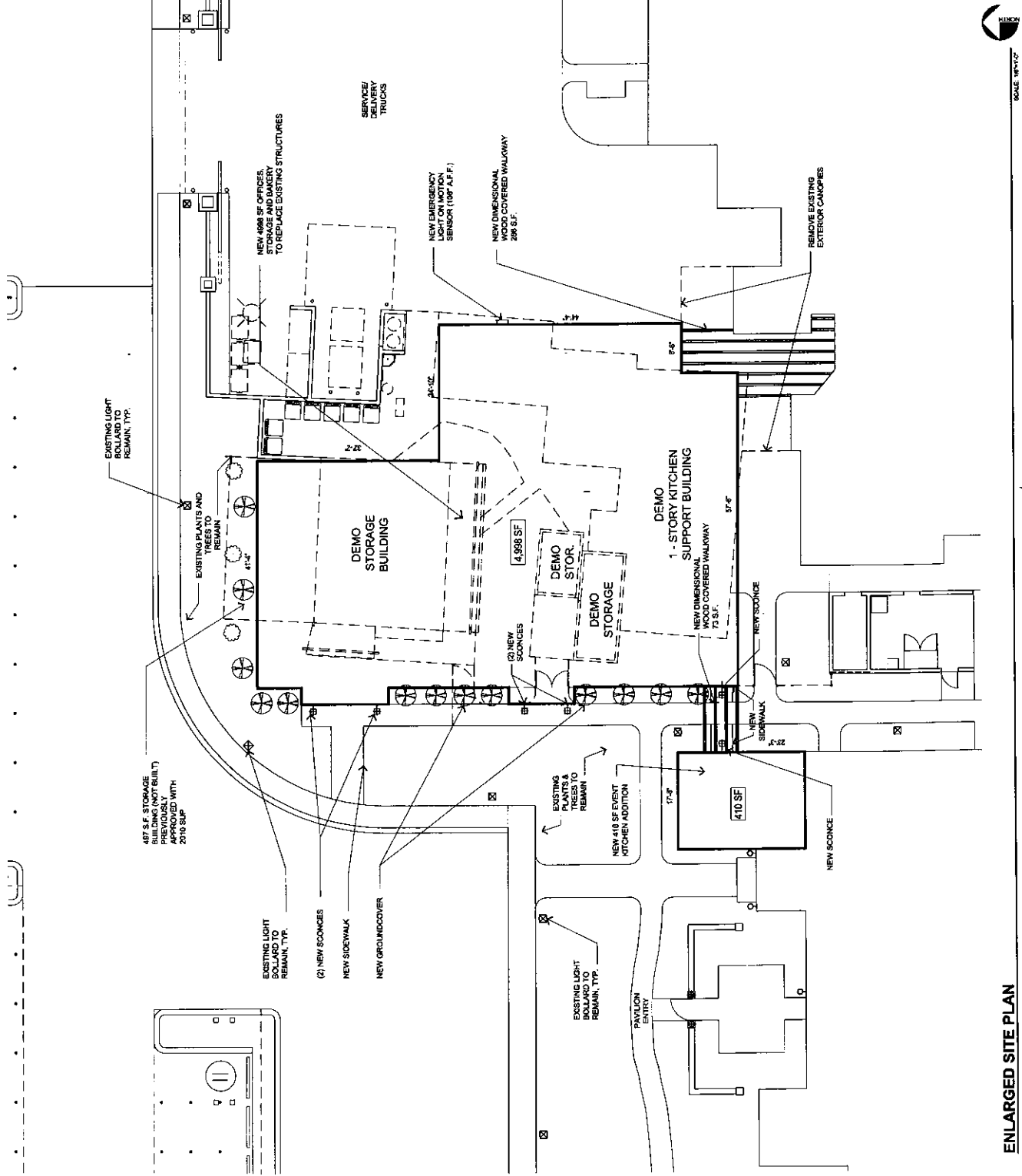
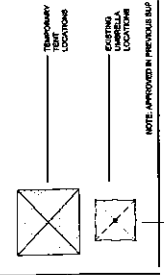
NOTES:

- OFFICE USE: TO REPLACE ALL EXISTING OFFICE SPACES WITH NEW OFFICE SPACES. ALL EXISTING OFFICE SPACES WILL BE DEMOLISHED AND NEW OFFICE SPACES WILL BE CONSTRUCTED IN THE SAME GENERAL AREA.
- NEW OFFICE SPACES: 4,898 S.F. OF NEW OFFICE SPACES WILL BE ADDED AROUND THE PERIMETER OF THE EXISTING OFFICE BUILDING.
- NEW EMERGENCY LIGHT ON MOTION LIGHT SENSOR (100' A.F.F.)
- NEW DIMENSIONAL WOOD COVERED WALKWAY 298 S.F.
- REMOVE EXISTING EXTERIOR CANOPIES

PROPERTY LOCATION MAP



SITE PLAN GRAPHIC LEGEND



ENLARGED SITE PLAN
 SCALE: 1/8" = 1'-0"

TITLE: **ENLARGED SITE PLAN**
 DRAWN BY: **AKC**
 DATE: **12/11/17**
 PROJECT NUMBER: **16-343**
 CLIENT: **DESIGN GROUP**

EL CHORRO LODGE
BUILDING ADDITIONS
 5550 EAST LINCOLN DRIVE
 PARADISE VALLEY, AZ 85253
 PROJECT: **ENLARGED SITE PLAN**

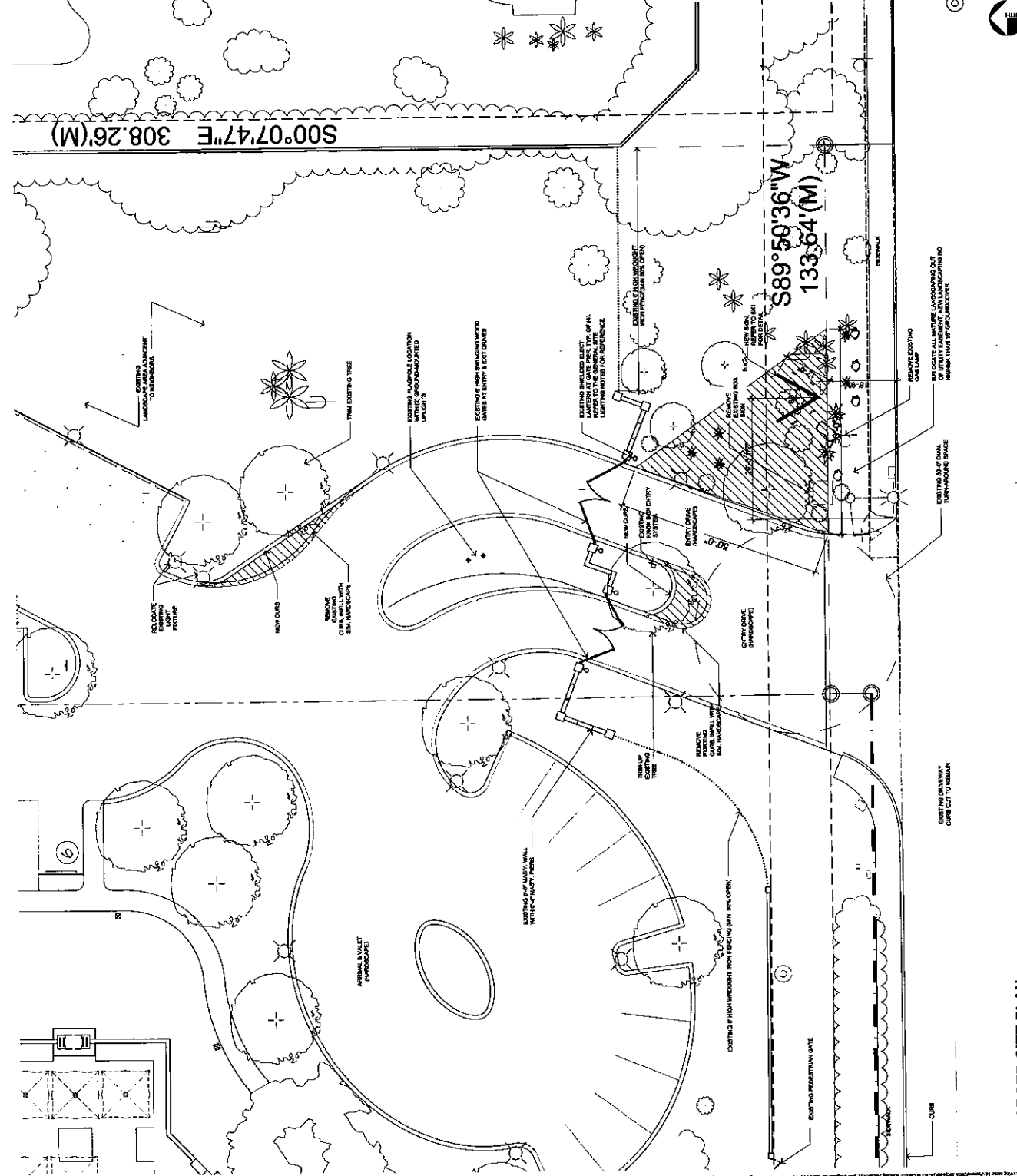
ideation
 DESIGN GROUP
 1000 EAST LINCOLN STREET
 PHOENIX, ARIZONA 85014
 PHONE: 602.955.1848
 WWW.IDEATIONAZ.COM

PC HEARING SET - 05.02.17
 SHEET NO. **SP3**
 NOTE: APPROVED IN PREVIOUS SPP

SITE AND PROJECT DATA
 TOWN/DISTRICT: **PARADISE VALLEY (SPECIAL USE PERMIT)**
 TAX ACCOUNT NUMBER: **000-000-000**
 OWNER: **SAVITRI, LLC**
 REGISTERED LOT COVERAGE (BY CITY B.F. / A.S.D. / S.F.): **11.1%**
 PROPOSED LOT COVERAGE (BY CITY B.F. / A.S.D. / S.F.): **11.1%**
 GENERAL REQUIREMENTS: **1. SPACE PER 100 S.F. OF RESTAURANT, BAR AND CHINA WARE SPACE AS BEING LINED**
2. 65 SPACES
3. 100 SPACES
4. 100 SPACES
5. 100 SPACES
6. 100 SPACES
7. 100 SPACES
8. 100 SPACES
9. 100 SPACES
10. 100 SPACES
11. 100 SPACES
12. 100 SPACES
13. 100 SPACES
14. 100 SPACES
15. 100 SPACES
16. 100 SPACES
17. 100 SPACES
18. 100 SPACES
19. 100 SPACES
20. 100 SPACES
21. 100 SPACES
22. 100 SPACES
23. 100 SPACES
24. 100 SPACES
25. 100 SPACES
26. 100 SPACES
27. 100 SPACES
28. 100 SPACES
29. 100 SPACES
30. 100 SPACES
31. 100 SPACES
32. 100 SPACES
33. 100 SPACES
34. 100 SPACES
35. 100 SPACES
36. 100 SPACES
37. 100 SPACES
38. 100 SPACES
39. 100 SPACES
40. 100 SPACES
41. 100 SPACES
42. 100 SPACES
43. 100 SPACES
44. 100 SPACES
45. 100 SPACES
46. 100 SPACES
47. 100 SPACES
48. 100 SPACES
49. 100 SPACES
50. 100 SPACES
51. 100 SPACES
52. 100 SPACES
53. 100 SPACES
54. 100 SPACES
55. 100 SPACES
56. 100 SPACES
57. 100 SPACES
58. 100 SPACES
59. 100 SPACES
60. 100 SPACES
61. 100 SPACES
62. 100 SPACES
63. 100 SPACES
64. 100 SPACES
65. 100 SPACES
66. 100 SPACES
67. 100 SPACES
68. 100 SPACES
69. 100 SPACES
70. 100 SPACES
71. 100 SPACES
72. 100 SPACES
73. 100 SPACES
74. 100 SPACES
75. 100 SPACES
76. 100 SPACES
77. 100 SPACES
78. 100 SPACES
79. 100 SPACES
80. 100 SPACES
81. 100 SPACES
82. 100 SPACES
83. 100 SPACES
84. 100 SPACES
85. 100 SPACES
86. 100 SPACES
87. 100 SPACES
88. 100 SPACES
89. 100 SPACES
90. 100 SPACES
91. 100 SPACES
92. 100 SPACES
93. 100 SPACES
94. 100 SPACES
95. 100 SPACES
96. 100 SPACES
97. 100 SPACES
98. 100 SPACES
99. 100 SPACES
100. 100 SPACES

PROPERTY LOCATION MAP
 1. 100' WIDE DRIVE
 2. 100' WIDE DRIVE
 3. 100' WIDE DRIVE
 4. 100' WIDE DRIVE
 5. 100' WIDE DRIVE
 6. 100' WIDE DRIVE
 7. 100' WIDE DRIVE
 8. 100' WIDE DRIVE
 9. 100' WIDE DRIVE
 10. 100' WIDE DRIVE
 11. 100' WIDE DRIVE
 12. 100' WIDE DRIVE
 13. 100' WIDE DRIVE
 14. 100' WIDE DRIVE
 15. 100' WIDE DRIVE
 16. 100' WIDE DRIVE
 17. 100' WIDE DRIVE
 18. 100' WIDE DRIVE
 19. 100' WIDE DRIVE
 20. 100' WIDE DRIVE
 21. 100' WIDE DRIVE
 22. 100' WIDE DRIVE
 23. 100' WIDE DRIVE
 24. 100' WIDE DRIVE
 25. 100' WIDE DRIVE
 26. 100' WIDE DRIVE
 27. 100' WIDE DRIVE
 28. 100' WIDE DRIVE
 29. 100' WIDE DRIVE
 30. 100' WIDE DRIVE
 31. 100' WIDE DRIVE
 32. 100' WIDE DRIVE
 33. 100' WIDE DRIVE
 34. 100' WIDE DRIVE
 35. 100' WIDE DRIVE
 36. 100' WIDE DRIVE
 37. 100' WIDE DRIVE
 38. 100' WIDE DRIVE
 39. 100' WIDE DRIVE
 40. 100' WIDE DRIVE
 41. 100' WIDE DRIVE
 42. 100' WIDE DRIVE
 43. 100' WIDE DRIVE
 44. 100' WIDE DRIVE
 45. 100' WIDE DRIVE
 46. 100' WIDE DRIVE
 47. 100' WIDE DRIVE
 48. 100' WIDE DRIVE
 49. 100' WIDE DRIVE
 50. 100' WIDE DRIVE
 51. 100' WIDE DRIVE
 52. 100' WIDE DRIVE
 53. 100' WIDE DRIVE
 54. 100' WIDE DRIVE
 55. 100' WIDE DRIVE
 56. 100' WIDE DRIVE
 57. 100' WIDE DRIVE
 58. 100' WIDE DRIVE
 59. 100' WIDE DRIVE
 60. 100' WIDE DRIVE
 61. 100' WIDE DRIVE
 62. 100' WIDE DRIVE
 63. 100' WIDE DRIVE
 64. 100' WIDE DRIVE
 65. 100' WIDE DRIVE
 66. 100' WIDE DRIVE
 67. 100' WIDE DRIVE
 68. 100' WIDE DRIVE
 69. 100' WIDE DRIVE
 70. 100' WIDE DRIVE
 71. 100' WIDE DRIVE
 72. 100' WIDE DRIVE
 73. 100' WIDE DRIVE
 74. 100' WIDE DRIVE
 75. 100' WIDE DRIVE
 76. 100' WIDE DRIVE
 77. 100' WIDE DRIVE
 78. 100' WIDE DRIVE
 79. 100' WIDE DRIVE
 80. 100' WIDE DRIVE
 81. 100' WIDE DRIVE
 82. 100' WIDE DRIVE
 83. 100' WIDE DRIVE
 84. 100' WIDE DRIVE
 85. 100' WIDE DRIVE
 86. 100' WIDE DRIVE
 87. 100' WIDE DRIVE
 88. 100' WIDE DRIVE
 89. 100' WIDE DRIVE
 90. 100' WIDE DRIVE
 91. 100' WIDE DRIVE
 92. 100' WIDE DRIVE
 93. 100' WIDE DRIVE
 94. 100' WIDE DRIVE
 95. 100' WIDE DRIVE
 96. 100' WIDE DRIVE
 97. 100' WIDE DRIVE
 98. 100' WIDE DRIVE
 99. 100' WIDE DRIVE
 100. 100' WIDE DRIVE

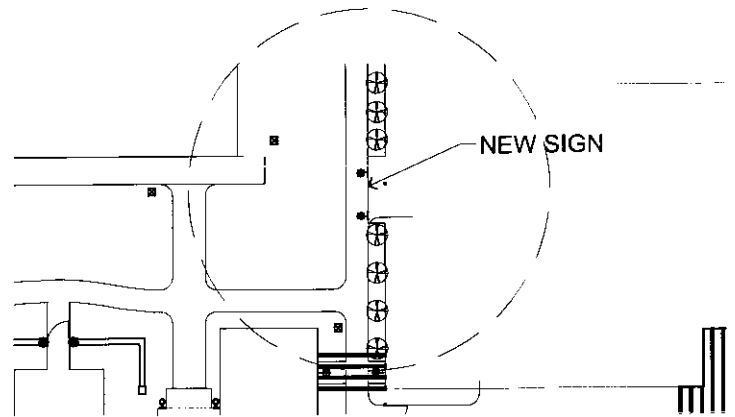
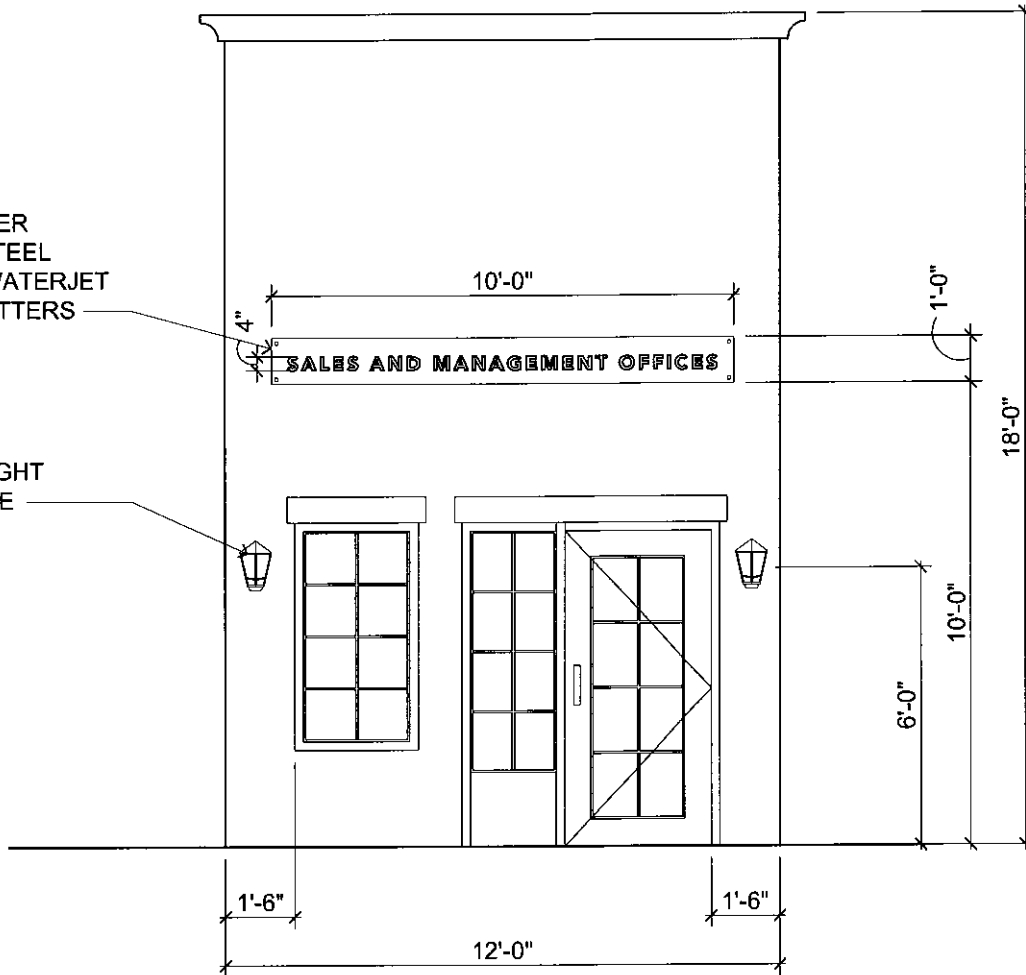
SITE PLAN GRAPHIC LEGEND
 1. 100' WIDE DRIVE
 2. 100' WIDE DRIVE
 3. 100' WIDE DRIVE
 4. 100' WIDE DRIVE
 5. 100' WIDE DRIVE
 6. 100' WIDE DRIVE
 7. 100' WIDE DRIVE
 8. 100' WIDE DRIVE
 9. 100' WIDE DRIVE
 10. 100' WIDE DRIVE
 11. 100' WIDE DRIVE
 12. 100' WIDE DRIVE
 13. 100' WIDE DRIVE
 14. 100' WIDE DRIVE
 15. 100' WIDE DRIVE
 16. 100' WIDE DRIVE
 17. 100' WIDE DRIVE
 18. 100' WIDE DRIVE
 19. 100' WIDE DRIVE
 20. 100' WIDE DRIVE
 21. 100' WIDE DRIVE
 22. 100' WIDE DRIVE
 23. 100' WIDE DRIVE
 24. 100' WIDE DRIVE
 25. 100' WIDE DRIVE
 26. 100' WIDE DRIVE
 27. 100' WIDE DRIVE
 28. 100' WIDE DRIVE
 29. 100' WIDE DRIVE
 30. 100' WIDE DRIVE
 31. 100' WIDE DRIVE
 32. 100' WIDE DRIVE
 33. 100' WIDE DRIVE
 34. 100' WIDE DRIVE
 35. 100' WIDE DRIVE
 36. 100' WIDE DRIVE
 37. 100' WIDE DRIVE
 38. 100' WIDE DRIVE
 39. 100' WIDE DRIVE
 40. 100' WIDE DRIVE
 41. 100' WIDE DRIVE
 42. 100' WIDE DRIVE
 43. 100' WIDE DRIVE
 44. 100' WIDE DRIVE
 45. 100' WIDE DRIVE
 46. 100' WIDE DRIVE
 47. 100' WIDE DRIVE
 48. 100' WIDE DRIVE
 49. 100' WIDE DRIVE
 50. 100' WIDE DRIVE
 51. 100' WIDE DRIVE
 52. 100' WIDE DRIVE
 53. 100' WIDE DRIVE
 54. 100' WIDE DRIVE
 55. 100' WIDE DRIVE
 56. 100' WIDE DRIVE
 57. 100' WIDE DRIVE
 58. 100' WIDE DRIVE
 59. 100' WIDE DRIVE
 60. 100' WIDE DRIVE
 61. 100' WIDE DRIVE
 62. 100' WIDE DRIVE
 63. 100' WIDE DRIVE
 64. 100' WIDE DRIVE
 65. 100' WIDE DRIVE
 66. 100' WIDE DRIVE
 67. 100' WIDE DRIVE
 68. 100' WIDE DRIVE
 69. 100' WIDE DRIVE
 70. 100' WIDE DRIVE
 71. 100' WIDE DRIVE
 72. 100' WIDE DRIVE
 73. 100' WIDE DRIVE
 74. 100' WIDE DRIVE
 75. 100' WIDE DRIVE
 76. 100' WIDE DRIVE
 77. 100' WIDE DRIVE
 78. 100' WIDE DRIVE
 79. 100' WIDE DRIVE
 80. 100' WIDE DRIVE
 81. 100' WIDE DRIVE
 82. 100' WIDE DRIVE
 83. 100' WIDE DRIVE
 84. 100' WIDE DRIVE
 85. 100' WIDE DRIVE
 86. 100' WIDE DRIVE
 87. 100' WIDE DRIVE
 88. 100' WIDE DRIVE
 89. 100' WIDE DRIVE
 90. 100' WIDE DRIVE
 91. 100' WIDE DRIVE
 92. 100' WIDE DRIVE
 93. 100' WIDE DRIVE
 94. 100' WIDE DRIVE
 95. 100' WIDE DRIVE
 96. 100' WIDE DRIVE
 97. 100' WIDE DRIVE
 98. 100' WIDE DRIVE
 99. 100' WIDE DRIVE
 100. 100' WIDE DRIVE



ENLARGED SITE PLAN
 SCALE: 80% = 1'

QUARTER INCH STEEL WITH WATERJET CUT LETTERS

NEW LIGHT SCENCE



SITE LOCATION



ideation
DESIGN GROUP

4885 EAST WASHINGTON STREET PHOENIX, ARIZONA 85034
tel 602.792.1781 fax 602.792.1846
INTERIOR DESIGN | FOODSERVICE DESIGN | ARCHITECTURE

EL CHORRO LODGE
BUILDING ADDITIONS
5550 EAST LINCOLN DRIVE
PARADISE VALLEY, AZ 85253

SIGN AT NEW BUILDING

DATE:
3.29.17
SCALE:
1/4"=1'-0"
ISSUED BY:
KMC

SHEET:

SK2

Aerial Photo

EL CHORRO
5500 E Lincoln Dr, Paradise Valley, AZ 85253

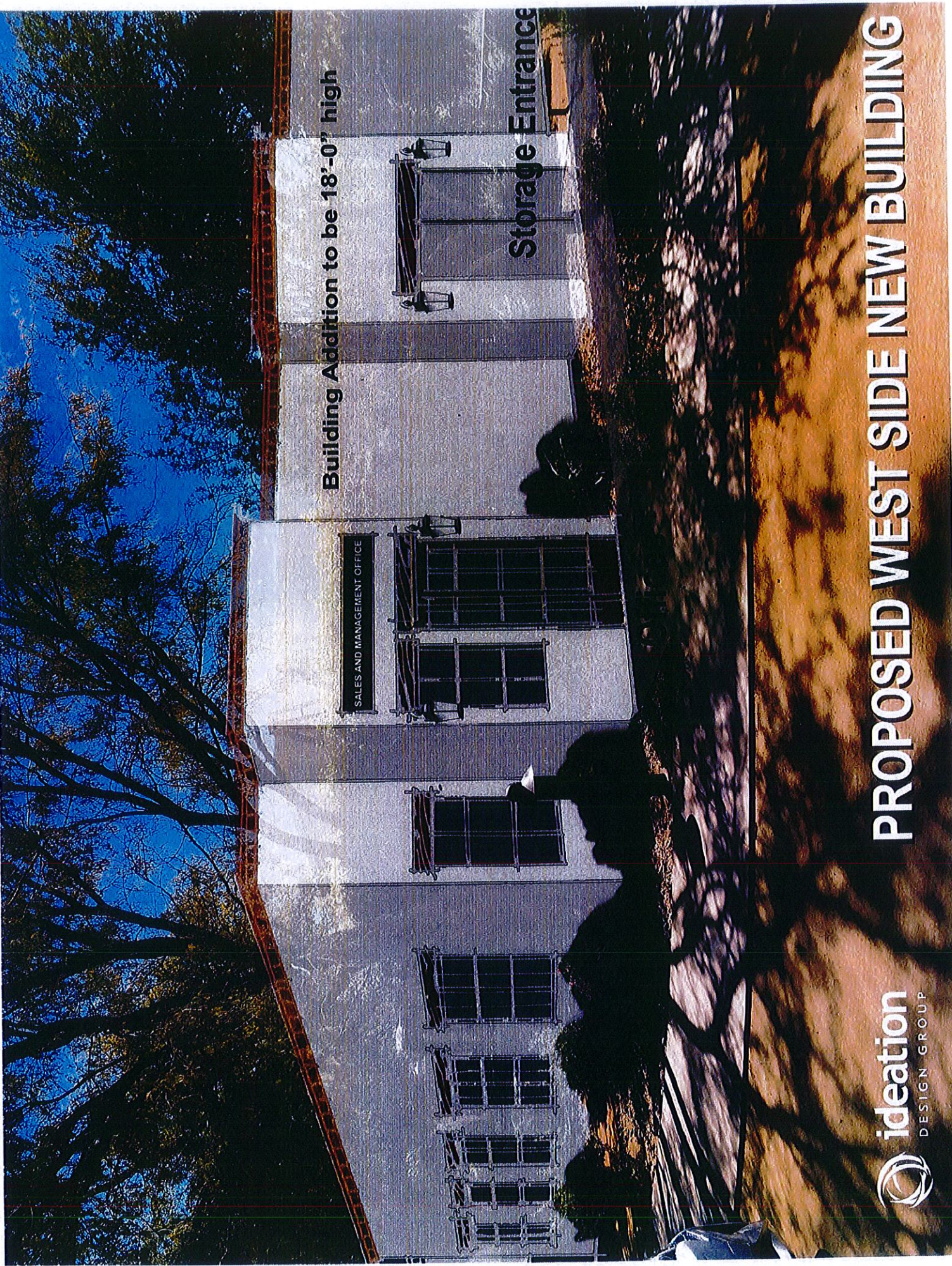
New Offices,
Storage and
Kitchens

Catering Kitchen
Expansion

El Chorro



90 ft



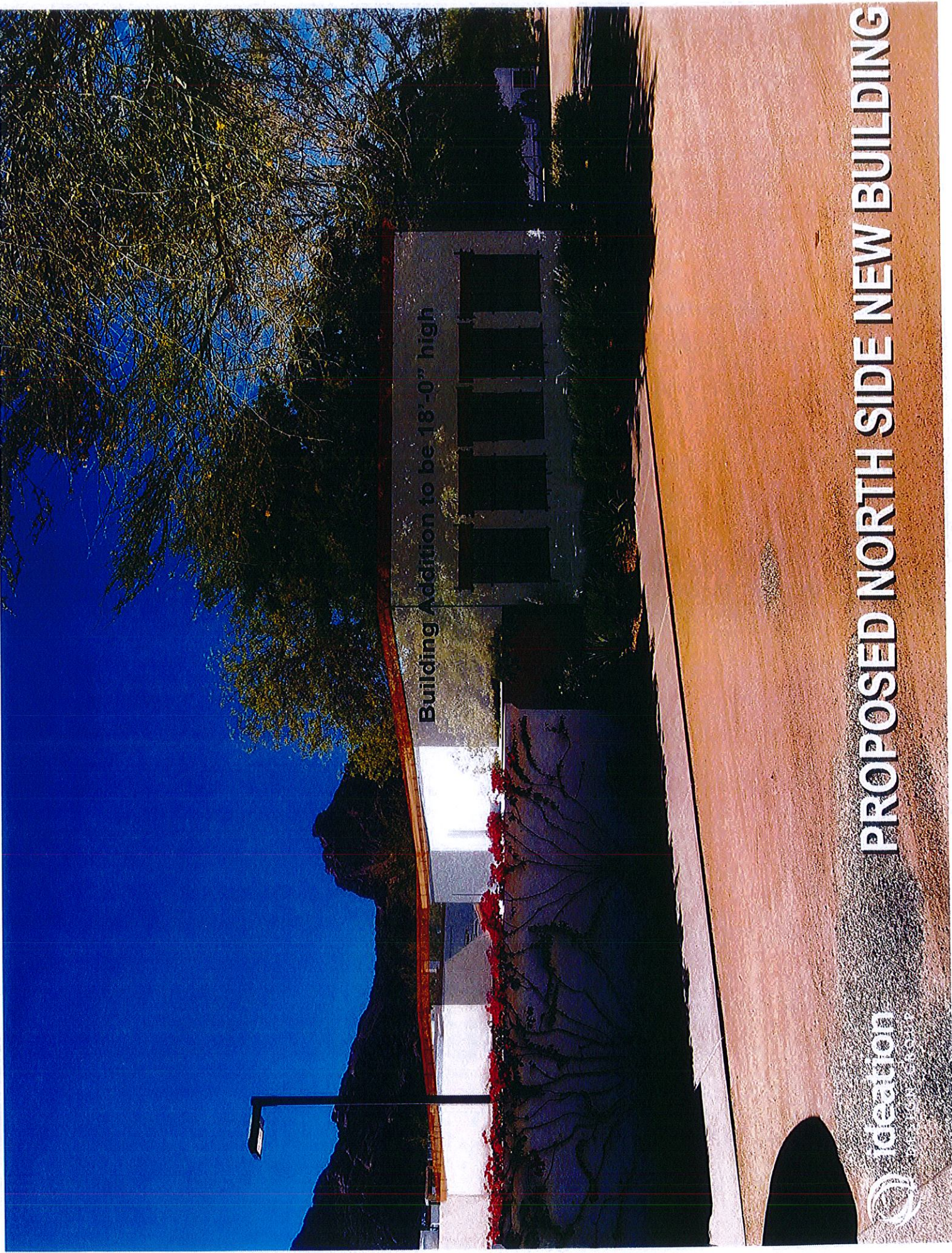
Building Addition to be 18'-0" high

Storage Entrance

SALES AND MANAGEMENT OFFICE



PROPOSED WEST SIDE NEW BUILDING



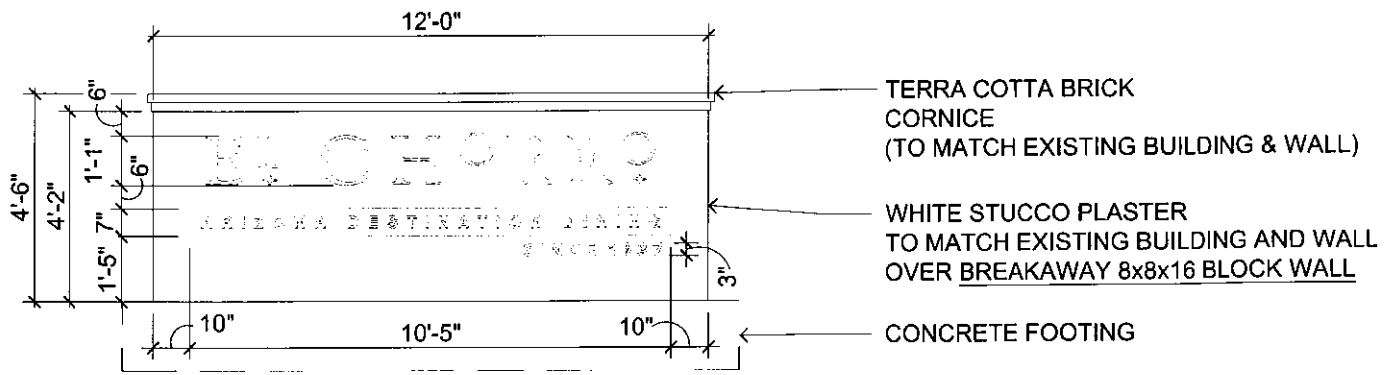
Building Addition to be 18'-0" high

PROPOSED NORTH SIDE NEW BUILDING

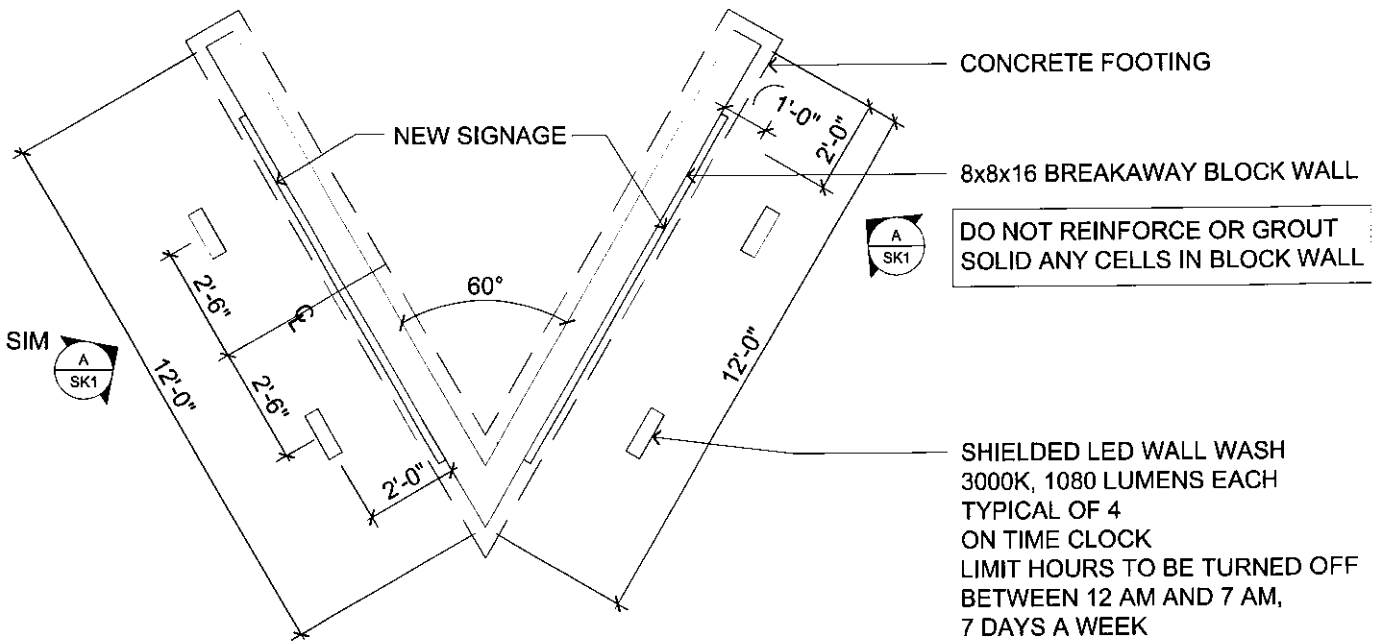


Building Addition to be 12'-0" high

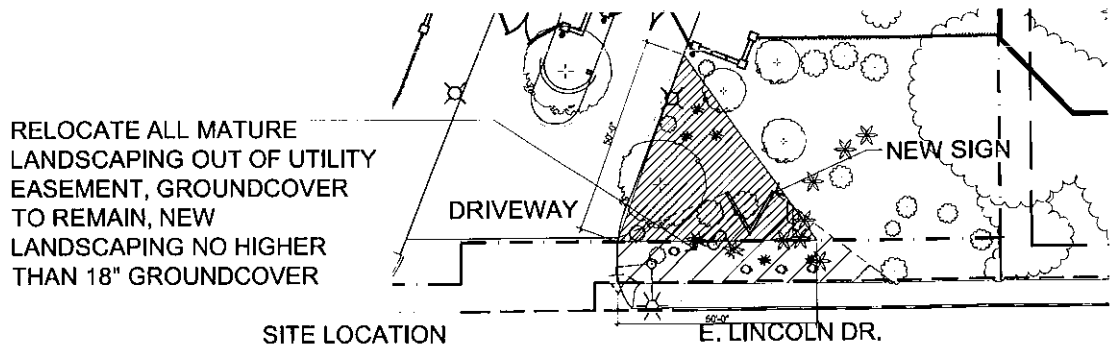
PROPOSED GATHERING KITCHEN ADDITION

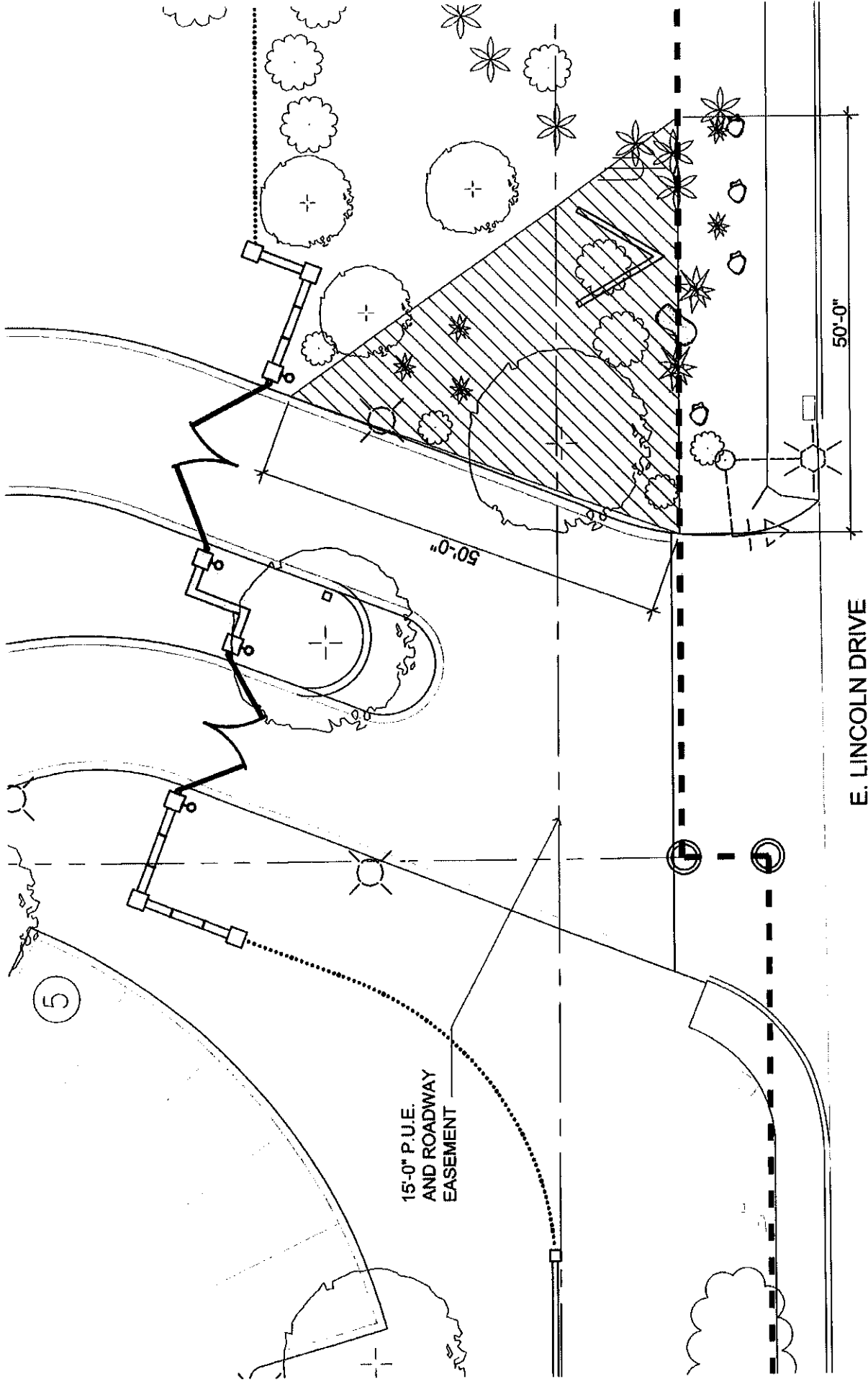


A ELEVATION



B PLAN VIEW





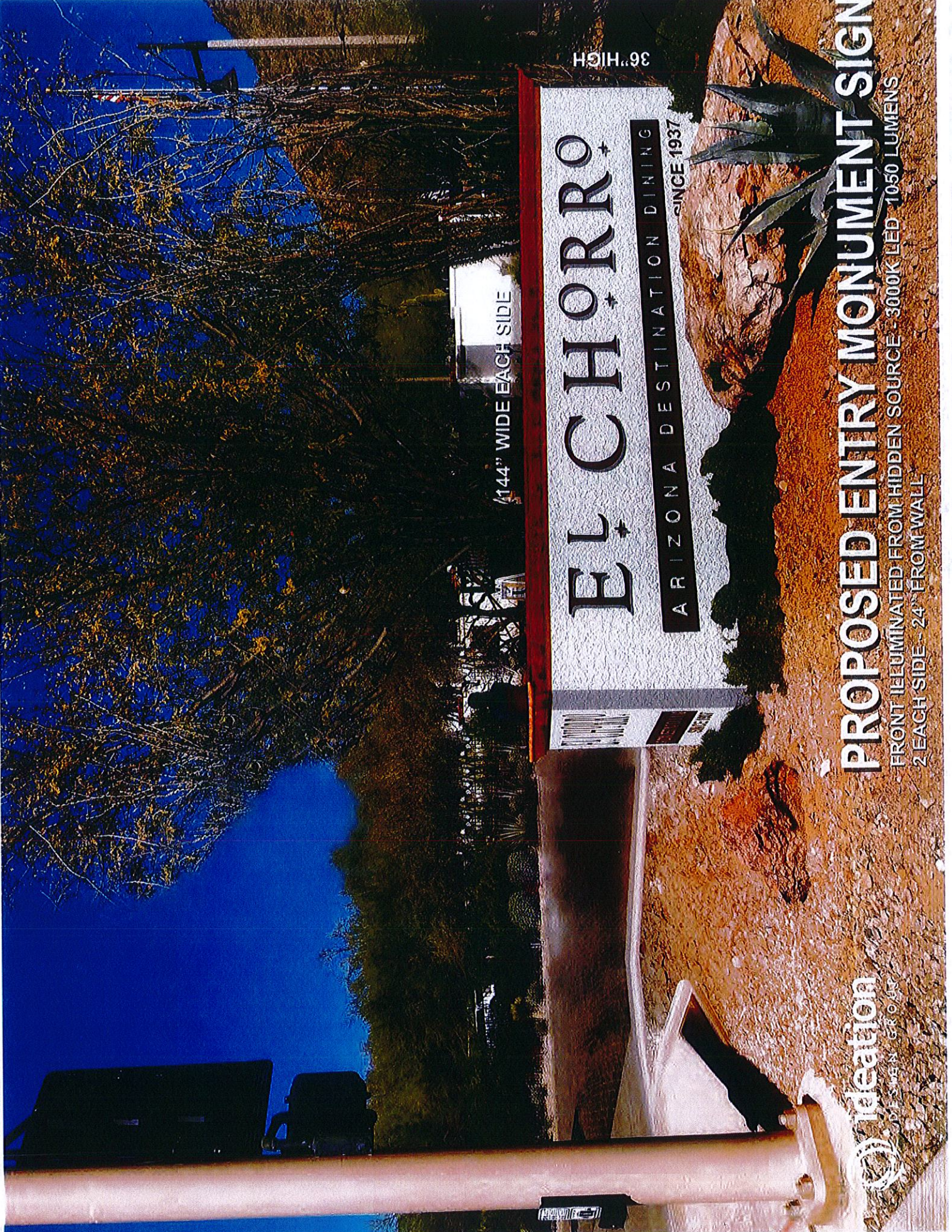
DATE: 4.6.17
 SCALE: 1/16"=1'-0"
 ISSUED BY: KMC

SHEET: SK2

EL CHORRO LODGE
 BUILDING ADDITIONS
 5550 EAST LINCOLN DRIVE
 PARADISE VALLEY, AZ 85253

ideation
 DESIGN GROUP
 PHOENIX, ARIZONA, 85004
 485 EAST WASHINGTON STREET
 PHOENIX, AZ 85004
 602.742.1848
 EXTERIOR DESIGN | FOODSERVICE DESIGN | ARCHITECTURE

CORNER VISION STUDY



144" WIDE EACH SIDE

36" HIGH

EL CHORRO

ARIZONA DESTINATION DINING
SINCE 1937

PROPOSED ENTRY MONUMENT SIGN

FRONT ILLUMINATED FROM HIDDEN SOURCE - 3000K LED 1050 LUMENS
2 EACH SIDE - 24" FROM WALL

Ideation
LANDSCAPE ARCHITECTURE



EL CHORRO
ESTABLISHED IN 1927
SINCE 1927

12'-0" Long

38" High



12'-0" Wide

EL CHORRO

ARIZONA DESTINATION DRINKING

SINCE 1927

5'-4" High



LED FLOOD LIGHTS

LFL-01-LEDP12 / LFL-01-LEDP24 SERIES

TYPE
El Chorro
SIGN LIGHT

SPECIFICATIONS

CONSTRUCTION: Extruded aluminum floodlight with cast aluminum adjustable swivel. Heavy-duty stamped aluminum Hood Extension available (add -HE to part number)

LENS: High impact clear acrylic

REFLECTOR: Highly polished specular aluminum

LIGHT SOURCE: Each LED Panel is: 12v, 12w, 1080 lumens integrated LED flat panel, warm white 3000K or 12v, 12w, 1160 lumens integrated LED flat panel, coolwhite 5200K (add-52 to part number)

LIFETIME RATING: 50,000 hours

SOCKET: None

12V INTERNAL DRIVER: 12w output, 12v AC input. Voltage range of 9 to 18 volts with optimum operating range of 10 to 15 volts for consistent performance and brightness. For use with magnetic transformers only.

120V INTERNAL DRIVER: 12w output, 120v 20/60Hz input. 240v/277v internal drivers also available

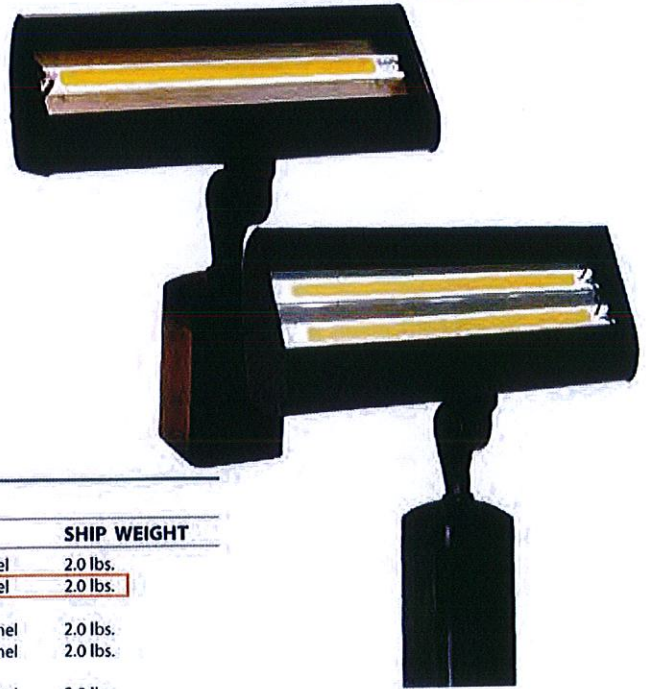
WIRING 12v: Black 3 foot 18/2 zip cord from base of fixture (12v only)
For 25 foot 16/2 fixture lead wire add -25F to catalog number.

WIRING 120v: Standard 120v Black, White and Ground 9" lead wires

MOUNTING 12v: FA-03LG black 9" ABS stake, tapped 1/2" NPS

MOUNTING 120v: None supplied. See Mounting Accessories below for options

FINISH: Black texture polyester powder coat. Optional finishes available

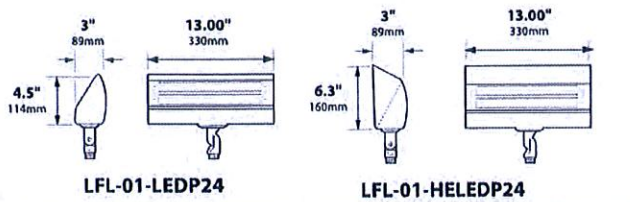
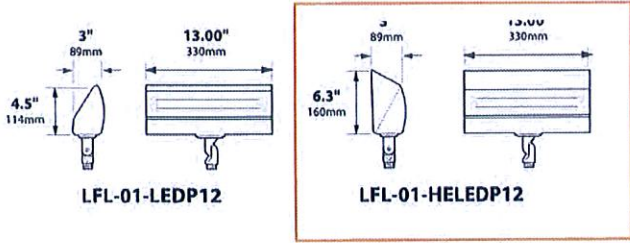


ORDERING INFORMATION

CATALOG NO.	DESCRIPTION	LAMP	SHIP WEIGHT
LFL-01-LEDP12-12VBLT	Aluminum Floodlight	12w, 3000K 12v LED Panel	2.0 lbs.
LFL-01-HELEDP12-12VBLT	Aluminum Floodlight, hood extension	12w, 3000K 12v LED Panel	2.0 lbs.
LFL-01-LEDP12-120VBLT	Aluminum Floodlight	12w, 3000K 120v LED Panel	2.0 lbs.
LFL-01-HELEDP12-120VBLT	Aluminum Floodlight, hood extension	12w, 3000K 120v LED Panel	2.0 lbs.
LFL-01-LEDP12-277VBLT	Aluminum Floodlight	12w, 3000K 277v LED Panel	2.0 lbs.
LFL-01-HELEDP12-277VBLT	Aluminum Floodlight, hood extension	12w, 3000K 277v LED Panel	2.0 lbs.
LFL-01-LEDP24-12VBLT	Aluminum Floodlight	2x 12w, 3000K 12v LED Panel	2.0 lbs.
LFL-01-HELEDP24-12VBLT	Aluminum Floodlight, hood extension	2x 12w, 3000K 12v LED Panel	2.0 lbs.
LFL-01-LEDP24-120VBLT	Aluminum Floodlight	2x 12w, 3000K 120v LED Panel	2.0 lbs.
LFL-01-HELEDP24-120VBLT	Aluminum Floodlight, hood extension	2x 12w, 3000K 120v LED Panel	2.0 lbs.
LFL-01-LEDP24-277VBLT	Aluminum Floodlight	2x 12w, 3000K 277v LED Panel	2.0 lbs.
LFL-01-HELEDP24-277VBLT	Aluminum Floodlight, hood extension	2x 12w, 3000K 277v LED Panel	2.0 lbs.

BEAM/GLARE CONTROL ACCESSORIES

-HE Add to catalog number for Hood Extension



JOB INFORMATION	
Type:	Date:
Job Name:	
Cat. No.:	
Lamp(s):	
Specifier:	
Contractor:	
Notes:	
FOCUS INDUSTRIES INC. 25301 COMMERCENTRE DRIVE LAKE FOREST, CA 92630 www.focusindustries.com sales@focusindustries.com (949) 830-1350 • FAX (949) 830-3390	



Black Texture (Standard)	Antique Verde	Bronze Texture	Camel	White Texture	Hunter Texture	Rust	Weathered Iron	Weathered Brown	Stucco	Rubbed Verde	Chrome Powder	Acid Rust	Acid Verde	Black Acid Treatment
-BLT	-ATV	-BRT	-CAM	-WTX	-HTX	-RST	-WIR	-WBR	-STU	-RBV	-CPR	-BAR/CAR	-BAV/CAV	-BAT

LFL-01-LEDP12/LEDP24CutShee033016

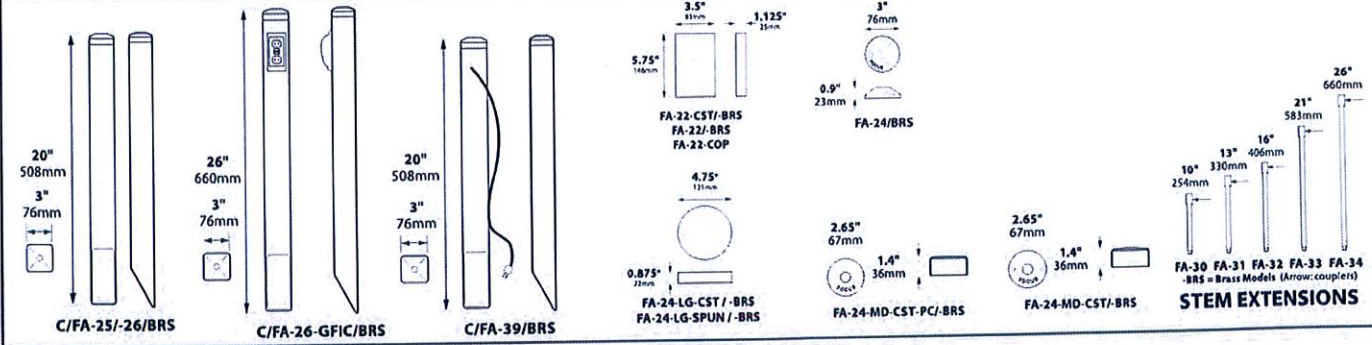
BRASS & COPPER ONLY



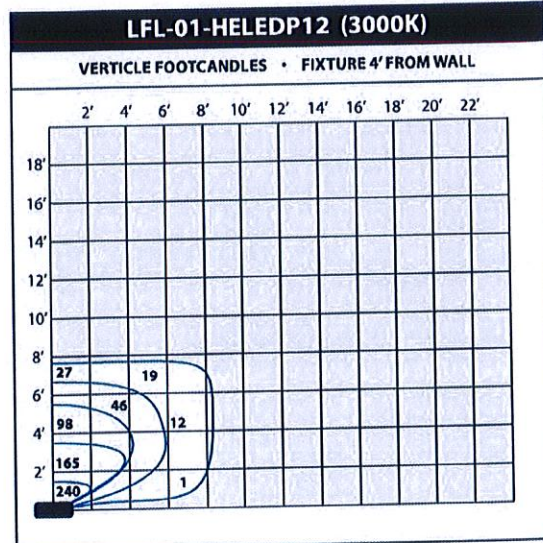
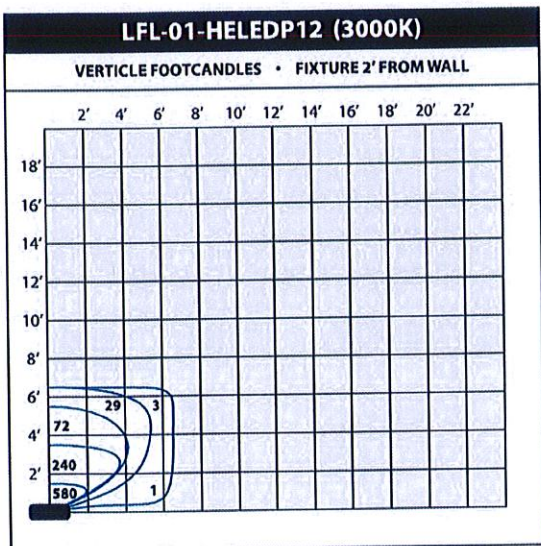
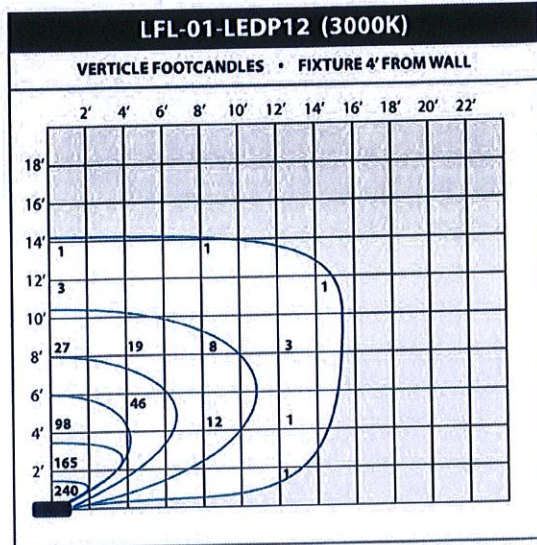
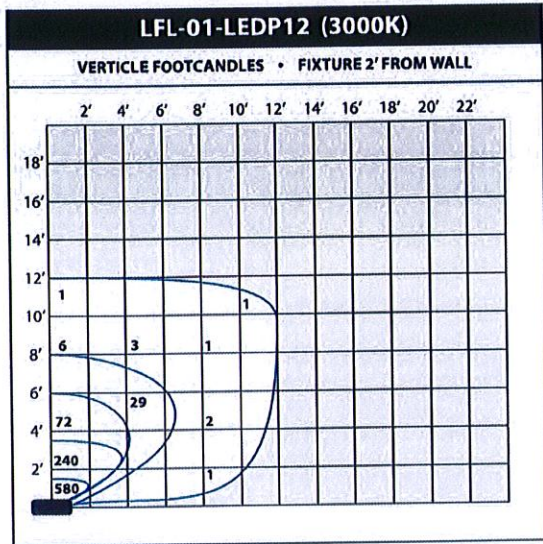
LED FLOOD LIGHTS LFL-01-LEDP12 / LFL-01-LEDP24 SERIES

TYPE
El Chorro
SIGN LIGHT

MOUNTING ACCESSORIES



LIGHT DISTRIBUTIONS AND PHOTOMETRICS



Mount Vernon Collection

Mount Vernon 1 Light LED Outdoor Wall Light - OZ

9709OZLED (Olde Bronze)



Dimensions

Height	19.50"
Width	9.50"

Project Name: El Cnorro
Location: Building/Entry Light Sconces
Type: _____
Qty: _____
Comments: _____

Ordering Information

Product ID	9709OZLED
Finish	Olde Bronze
Available Finishes	BK, OZ, OZ
Collection	Mount Vernon Collection

Dimensions

Extension	10.25"
Height from center of Wall opening	7.25"
Base Backplate	4.50 X 6.25
Weight	5.70 LBS

Photometrics

Kelvin Temperature	2700K
Color Rendering Index	80

Specifications

Material	Brass
Glass Description	Clear Seeded

Electrical

Dimmable	Yes
Dimmable Notes	This LED is compatible with most standard incandescent dimmers, LED dimmers, and electronic low voltage dimmers. For more information, go to Kichler.com/dimming .
Voltage	120V

Qualifications

Safety Rated	Wet
Title 24	Yes
Expected Life Span	20000 Hours
Warranty	www.kichler.com/warranty

Primary Lamping

Light Source	LED
Lamp Included	Integrated
Number of Lights/LEDs	1
Delivered Lumens	525
Delivered Efficacy	75
Max or Nominal Watt	150W

Kichler
7711 East Pleasant Valley Road
Cleveland, Ohio 44131-8010
Toll free: 866.558.5706 or kichler.com

Notes:
1) Information provided is subject to change without notice. All values are design or typical values when measured under laboratory conditions.
2) Incandescent Equivalent: The incandescent equivalent as presented is an approximate number and is for reference only

KICHLER

Mount Vernon Collection
 Mount Vernon 1 Light LED Outdoor Wall Light -
 OZ
 9709OZLED (Olde Bronze)

Project Name: EL CHOTTO
 Location: Building/Entry Light Sconces
 Type: _____
 Qty: _____
 Comments: _____
 Dimming Yes

Alternate Lamps

Lamp Included	Bulb Listing	Light Source	Max Wattage/Range	Bulb Product ID	Dimming
No	Alternate	INCA	60W	4071CLR	

PHILIPS

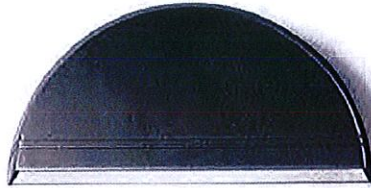


El Chorro
Delivery Yard Emergency Exit
Light



Wall Mount

LED wall sconce 102L



Project: _____
 Location: _____
 Cat No.: _____
 Type: _____
 Qty: _____
 Notes: _____

Philips Gardco 102 LED wall sconces feature a low-profile design that provides wide flexibility in high performance exterior wall illumination. Full cutoff performance, usable illumination patterns, and powerful wattages combine into a compact and architecturally pleasing design. 102L sconces are available in Type 2, 3, and 4 distributions, and provide output of up to 9500 lumens. Energy saving control options increase energy savings and offer California Title 24 compliance. Emergency Battery Backup option available for path of egress.

Ordering guide

example: 102L-32L-700-NW-G1-3-120-IMRI2-BZ

Prefix	Number of LEDs	Drive Current	LED Color - Generation	Distribution	Emergency	Voltage	Options		Finish
							Controls	Electrical	
102L									
102L 102L LED Wall Sconce	16L 16 LEDs (1 module)	530 530mA	CW-G1 Cool White 5700K, 70CRI Generation 1	2 Type 2	EBPC Emergency Battery Pack Cold Weather ^{1,2,12} Leave blank to omit an emergency option	UNV 120-277V	DD 0-10V Dimming Driver ^{5,6} DCC Dual Circuit Control ^{7,8} DynaDimmer: Automatic Profile Dimming CS50 Safety 50% Dimming (7 hours) ^{9,10} CM50 Median 50% Dimming (8 hours) ^{9,10} CE50 Economy 50% Dimming (9 hours) ^{9,10} DA50 All Night 50% Dimming ^{9,10} Photoelectric Systems PCB Photocontrol Button ^{5,10,11,12} Infrared Motion Response Systems IMRI2 Integral with #2 lens ^{4,12,13} IMRI3 Integral with #4 lens ^{4,12,13} Wireless Controls LLC2 Integral module with #2 lens ^{5,9,14} LLC3 Integral module with #3 lens ^{5,9,14}	Fusing F1 Single (120, 277, 347VAC) ¹³ F2 Double (208, 240, 480VAC) ¹³ F3 Canadian Double Pull (208, 240, 480VAC) ¹³	Textured BK Black WH White BZ Bronze DGY Dark Gray MGY Medium Gray Customer specified RAL Specify optional color or RAL (ex: OC-LGP or OC-RAL7024) CC Custom color (Must supply color chip for required factory quote)
		650 650mA ¹		3 Type 3		HVU 347-480V			
		700 700mA		4 Type 4		120 120V			
		1000 1000mA		208 208V					
		1200 1200mA		240 240V					
				277 277V					
	32L 32 LEDs (2 module)	530 530mA	NW-G1 Neutral White 4000K, 70CRI Generation 1		347 347V				
		650 650mA ¹		WW-G1 Warm White 3000K, 70CRI Generation 1	480 480V				
		700 700mA							
		1000 1000mA ²							

- 650mA only available with Emergency Battery Pack Cold Rated (EBPC) option
- 32L rated for 30°C at 1000mA
- Available for use with 16L and 32L in 530mA or 650mA only. Rated for -20°C to 35°C.
- Available in 120 or 277V only.
- Not available with Dual Circuit Control (DCC) option.
- 16L not available with Dimming Driver (DD) in following configurations: 530, 700 and 1200mA in 347 and 480V.
- Not available with Dimming Driver (DD) option.
- Available in 32L with 530mA. Consult technical support center for use with photocell and CS/CM/CE/DA.
- Available in 120-277V (UNV) only.
- Not available with LLC and DCC.
- Not available with 480V.
- Must specify input voltage.
- Not available with DD, DCC or LLC.
- LLC2/3 Not available with PCB, IMRI, CS/CM/CE/DA. Ships with WS accessory attached to wireless module. Not for use with LLCR accessory.

102L Wall sconce LED

Wall Mount

Luminaire Accessories (order separately)

Mounting Accessories

Wall Mount

WS Wall Mounted Box for Surface Conduit

Controls Accessories

Wireless controls remote mount module

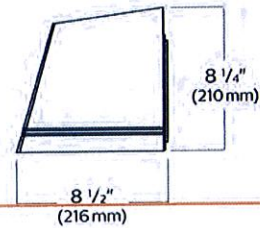
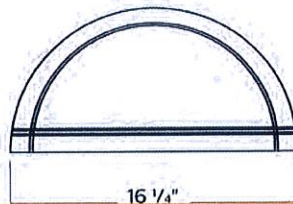
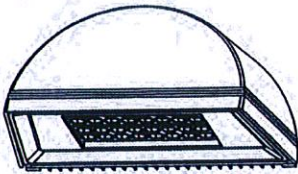
LLCR2-(F) #2 lens - specify finish in place of (F)

LLCR3-(F) #3 lens - specify finish in place of (F)

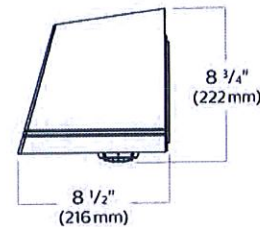
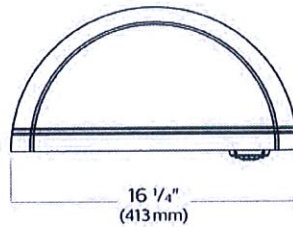
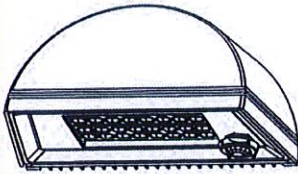
Wireless controls remote controller accessory

Wireless controls system offers a remote radio/sensor module that allows connectivity to Wireless system gateway. Remote module can be mounted to wall or pole with j-box supplied. May be specified by choosing one of two different lenses to accommodate a variety of mounting heights/sensor detection ranges. Must specify option DD on luminaires that are planned to be used with remote mount controllers. See page 4 for Wireless Controls details.

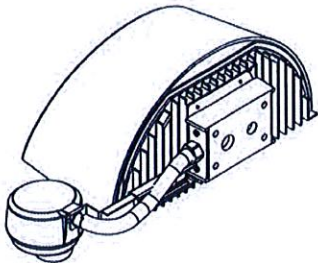
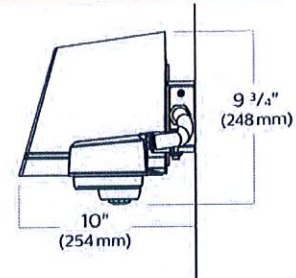
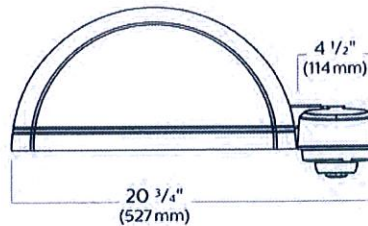
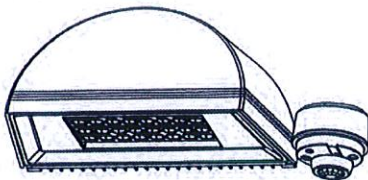
Dimensions



Motion Response



Wireless Controls



Luminaire Weights

LED Wall Sconce 102L	Weight
Luminaire	13.5 lbs
Luminaire - EBPC (EM battery pack)	17.0 lbs
Luminaire - Integrated Wireless Controls	16.3 lbs

102L Wall sconce LED

Wall Mount

LED Wattage and Lumen Values

Ordering Code	LED Qty	LED Current (mA)	Color Temp.	Average System Watts ¹	Type 2			Type 3			Type 4		
					Lumen Output ^{1,2}	BUG Rating	Efficacy (LPW)	Lumen Output ^{1,2}	BUG Rating	Efficacy (LPW)	Lumen Output ^{1,2}	BUG Rating	Efficacy (LPW)
102L-16L-530-NW-G1	16	530	4000K	28	2944	B1-U0-G0	106	2687	B1-U0-G1	97	2747	B1-U0-G1	99
102L-16L-700-NW-G1	16	700	4000K	37	3789	B1-U0-G1	103	3458	B1-U0-G1	94	3535	B1-U0-G1	96
102L-16L-1000-NW-G1	16	1000	4000K	55	5050	B1-U0-G1	92	4609	B1-U0-G1	84	4712	B1-U0-G1	86
102L-16L-1200-NW-G1	16	1200	4000K	65	5744	B2-U0-G1	89	5242	B1-U0-G2	81	5359	B1-U0-G2	83
102L-32L-530-NW-G1	32	530	4000K	52	5698	B2-U0-G1	110	5200	B1-U0-G2	100	5316	B1-U0-G2	102
102L-32L-700-NW-G1	32	700	4000K	70	7242	B2-U0-G1	103	6609	B1-U0-G2	94	6757	B1-U0-G2	96
102L-32L-1000-NW-G1	32	1000	4000K	107	9797	B2-U0-G1	92	8941	B2-U0-G2	84	9140	B2-U0-G2	86

LED Wattage and Lumen Values (Emergency Mode)³

Ordering Code	LED Qty	LED Current (mA)	Color Temp.	Ave. System Watts (charging mode)	Type 2	Type 3	Type 4
102L-16L-NW-EBPC	16	N/A	4000K		14	1345	1228
102L-32L-NW-EBPC	32	N/A	4000K		14	1754	1636

1. Wattage and lumen output may vary by +/- 8% due to LED manufacturer forward volt specification and ambient temperature. Wattage shown is average for 120V through 277V input. Actual wattage may vary by an additional +/- 10% due to actual input voltage.
2. Lumen values based on photometric tests performed in compliance with IESNA LM-79
3. For emergency EBPC option, publish values are based on initial lumens.

Luminaire options

DD: 0-10V dimming driver with leads supplied through back of luminaire (for secondary dimming controls by others).

Dynadimmer Automatic Profile Dimming: Automatic dimming profiles (CS50/CM50/CE50) offer safety, median, or economy settings, for shorter or longer duration. Dimming profiles provide flexibility towards energy savings goals while optimizing light levels during specific dark hours. 50% dimming is standard. DA50 offers 50% instantaneous dimming all night (during all dark hours). 75% and 25% dimming is also available if different light levels are required (contact Technical Support for details).

Profile	Dimming		
	Schedule	Duration	Level
Economy	9 PM - 6 AM	9 hours	50%
Median	10 PM - 6 AM	8 hours	50%
Safety	11 PM - 6 AM	7 hours	50%
Reactive 50	all night	dynamic	50%

IMRI2, IMRI3: Infrared Motion Response Integral (IMRI). IMRI module is mounted integral to the luminaire door and is available with two different sensor lens types to accommodate various mounting heights and occupancy detection ranges (see charts for approximate detection patterns). Motion response for option IMRI is set/operates in the following fashion: The motion sensor is set to a constant 25%. When motion is detected by the PIR sensor, the luminaire returns to 100% light output. Dimming on low is factory set to 25% with 5 minute default in "full power" prior to dimming back to low. When no motion is detected for 5 minutes, the motion response system reduces the wattage by 75%, to 25% of the normal constant wattage reducing the light level. IMRI can also be specified with automatic profile dimming for the added benefit of a combined dimming profile with sensor detection, where the PIR sensor will override the dimming profile when occupancy is detected. Passive infrared (PIR) motion sensor, WattStopper FSP-211, equipped with lens choice specified. Available in 120V or 277V input only. Motion sensor off state power is 0.0 watts. The FSP-211 can also be reprogrammed with WattStopper's FSIR-100 remote programming tool accessory.

DCC: Dual Circuit Control permits separate switching of 32L models only, where a quantity of (2) 16 LED modules are controlled independently by use of two sets of leads, one for each module.

Wireless Controls: Controller radio/sensor module attached to luminaire via WS accessory (Included with LLC2 and LLC3 option) and includes radio, photocell and motion sensor. Also available with remote pod accessory where pod is mounted separate from luminaire to pole or wall (see accessories and Wireless Controls information page 4).

F1: Fusing Single (for 120, 277 or 347VAC)

F2: Fusing Double (for 208, 240 or 480VAC)

F3: Fusing Canadian Double Pull (for 208, 240 or 480VAC)

EBPC: Emergency battery pack is cold weather rated down to -20C (-4F) and integral to the luminaire, allowing for a consistent look between emergency and non-emergency sconces. A separate surface mount accessory box is not required. Dual light engines (32L) are wired in parallel, both operating in emergency mode to meet various redundancy lamp requirements. Also available with single light engine (16L). Secondary driver with relay immediately detects AC power loss and powers luminaire for a minimum of 90 minutes from the time power is lost.

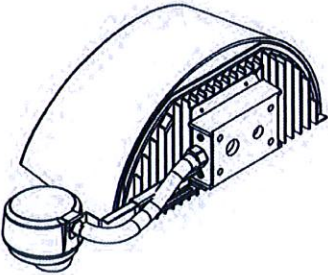
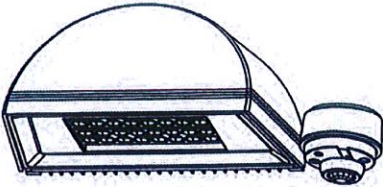
102L Wall sconce LED

Wall Mount

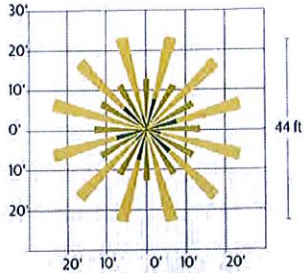
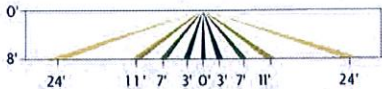
Infrared Motion Response and Wireless Controls Sensor Coverage Patterns

LLC2/3 Luminaire Mounted Controller

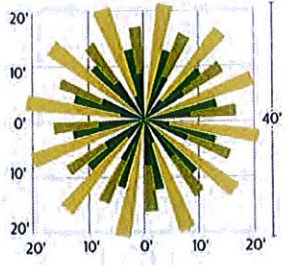
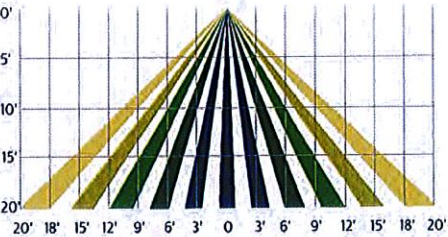
Controller attached to luminaire and Includes radio, photocell and motion sensor with #2 or #3 lens for 8-20' mounting heights.



IMRI2/LLC2/LLCR2

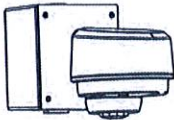


IMRI3/LLC3/LLCR3

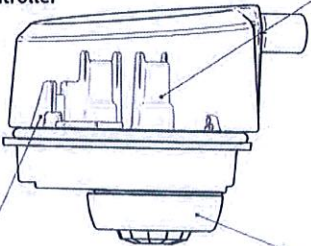


Remote Mount Wireless Controller

Used to extend the communication on site, to extend motion response and add other luminaires that are not pole mounted. Consult factory for more information.



Controller



Wireless Radio

- 1.8 Watts max (no load draw)
- Operating voltage 120-277 VAC RMS
- Communicates using the ZigBee protocol
- Carries out dimming commands from Gateway
- Reports ambient light readings to 1500 Ft-Cd
- Transmission Systems Operating within the band 2400-2483.5Mhz
- ROHS Compliant

Photocell

- Ambient light photocell on every wireless radio that averages the light levels of up to 5 controllers for an accurate reading and optimal light harvesting activity.
- Reports ambient light readings to 1500 Fc.

Motion Response

- Detects motion through passive infrared sensing technology with three different lens configurations
- Motion sensor coverage can be adjusted from a narrow to a wide detection range, which helps reduce false triggers to further increase energy savings.
- Sensing profiles can be updated to adapt to activity levels in the environment, such as occupancy level, wind, and mounting height

102L Wall sconce LED

Wall Mount

Specifications

Housing

Main body cast housing and back plate made of a low copper die cast Aluminum alloy for a high resistance to corrosion, 0.100" (2.5mm) minimum thickness. Hinged door allows access to driver and LED compartment.

Mounting

Mounting is completed through integral back plate that features a separate recessed feature for hook and lock quick mount plate that secures with two set screws from bottom of luminaire. Mounting plate is located in the center of the luminaire width and 3.5" above the luminaire bottom (lens down position). Luminaire ships fully assembled, ready to install.

Light Engine

Composed of 4 main components: Heat Sink / LED Module / Optical System / Driver. Electrical components are RoHS compliant. IP66 sealed light engines. LEDs tested by ISO 17025-2005 accredited lab in accordance with IESNA LM-80 guidelines extrapolations in accordance with IESNA TM-21. Metal core board ensures greater heat transfer and longer lifespan.

Heat Sink

Integral door/heat sink design made of low copper die cast Aluminum alloy for a high resistance to corrosion.

LED Module

Composed of high performance white LEDs. Color temperature as per ANSI/NEMA bin Neutral White, 4000K nominal (+/- 275K), CRI 70 Min. Available in other color temperatures including Cool White, 5700K and Warm White, 3000K.

LED Performance

Predicted lumen depreciation data ¹				
Ambient Temperature (°C)	Driver mA	Calculated L ₇₀ hours ²	L ₇₀ per TM-21 ^{2,3}	Lumen Maintenance % @ 60,000 hours
25°C	up to 1200 mA	>100,000	>60,000	88%

1. Predicted performance derived from LED manufacturer's data and engineering design estimates, based on IESNA LM-80 methodology. Actual experience may vary due to field application conditions.
2. L₇₀ is the predicted time when LED performance depreciates to 70% of initial lumen output.
3. Calculated per IESNA TM21-11. Published L₇₀ hours limited to 6 times actual LED test hours.

Hardware

All exposed screws shall be stainless and/or corrosion resistant and captive.

Optical System

The advanced LED optical systems provide IES Types 2, 3, 4. Composed of high performance UV stabilized optical grade polymer refractor lenses to achieve desired distribution optimized to get maximum spacing, target lumens and a superior lighting uniformity. System is rated IP66. Performance shall be tested per LM-63, LM-79 and TM-15 (IESNA) certifying its photometric performance. Dark sky compliant with 0% uplight and U0 per IESNA TM-15.

Driver

High power factor of 90% min. Electronic driver, operating range 50/60 Hz. Auto adjusting universal voltage input from 120 to 277 VAC or 347 to 480 VAC rated for both application line to line or line to neutral, Class I, THD of 20% max. The current supplying the LEDs will be reduced by the driver if the driver experiences internal overheating as a protection to the LEDs and the electrical components. Output is protected from short circuits, voltage overload and current overload. Automatic recovery after correction. Standard built in driver surge protection of 2.5kV (min).

Surge Protection

Each luminaire is provided as standard with surge protector (Philips designed SPI) tested in accordance with ANSI/IEEE C62.45 per ANSI/IEEE C62.41.2 Scenario I Category C High Exposure 10kV/5kA waveforms for Line Ground, Line Neutral and Neutral Ground, and in accordance with U.S. DOE (Department of Energy) MSSLC (Municipal Solid State Street Lighting Consortium) Model Specification for LED Roadway Luminaires Appendix D Electrical Immunity High Test Level 10kV / 5kA.

Wiring (supplied by others)

Splices must be made in the junction box.

Finish

Five standard colors offered in textured black, white, bronze, dark gray and medium gray. Color in accordance with the AAMA 2604 standard. Application of polyester powder coat paint 2.5 mils minimum. The thermosetting resins provides a discoloration resistant finish in accordance with the ASTM D2244 standard, as well as luster retention in keeping with the ASTM D523 standard and humidity proof in accordance with the ASTM D2247 standard. RAL and custom color matching available.

LED Products Manufacturing Standard

The electronic components sensitive to electrostatic discharge (ESD) such as light emitting diodes (LEDs) are assembled in compliance with EC61340-5-1 and ANSI/ESD S20.20 standards so as to eliminate ESD events that could decrease the useful life of the product.

LED Useful Life

Luminaire Useful Life accounts for LED lumen maintenance. Refer to IES files for energy consumption and delivered lumens for each option. Based on ISTMT in situ thermal testing in accordance with UL1598 and UL8750, LED LM-80/TM-21, expected to reach 100,000+ hours with >L70 lumen maintenance @ 25°C.

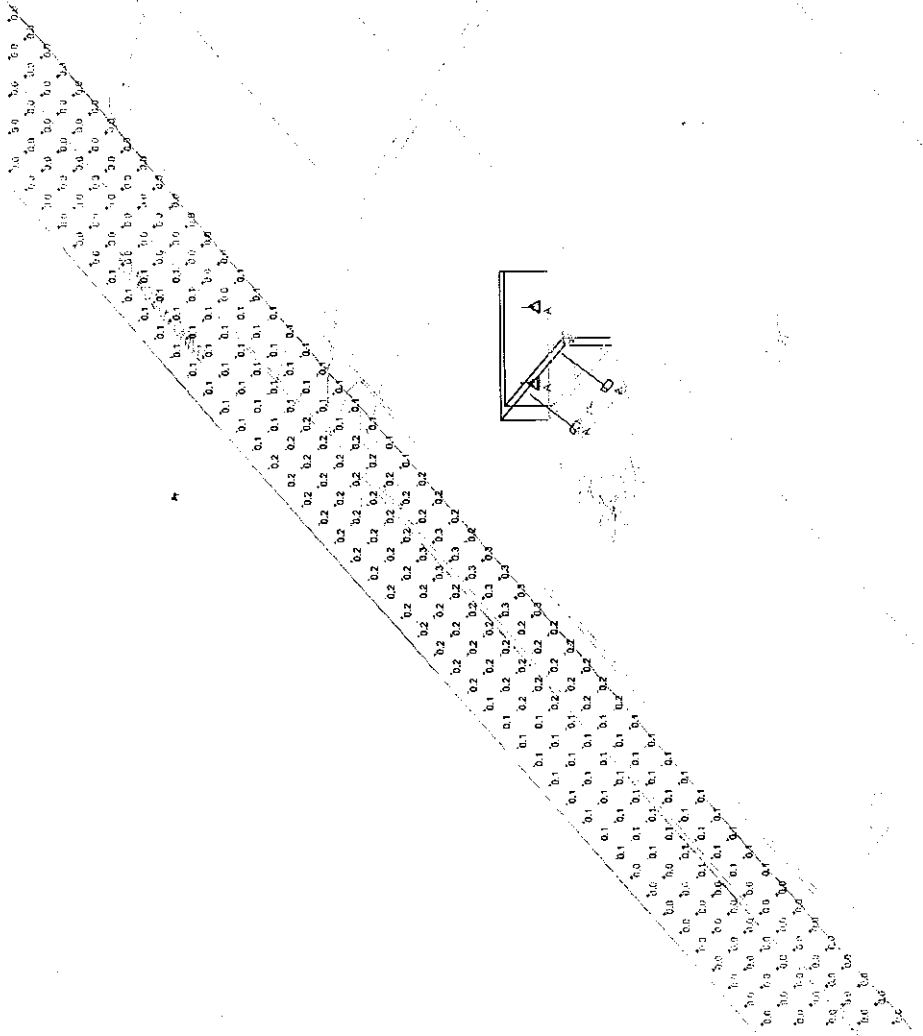
Certifications and Compliance

cULus Listed for Canada and USA suitable for wet locations when mounted downward facing. cULus Listed for Canada and USA suitable for damp locations when inverted upward facing when mounted in covered ceiling application. Emergency Battery Pack option is tested and listed to UL924 and CSA C22.2 No. 141-10 DesignLights Consortium qualified on models as listed on DLC QPL. Luminaire is rated for operation in ambient temperature of -40°C (-40°F) up to +40°C (+104°F).

Limited Warranty

5-year limited warranty. See philips.com/warranties for details and restrictions. Visit our eCatalog or contact your local sales representative for more information.



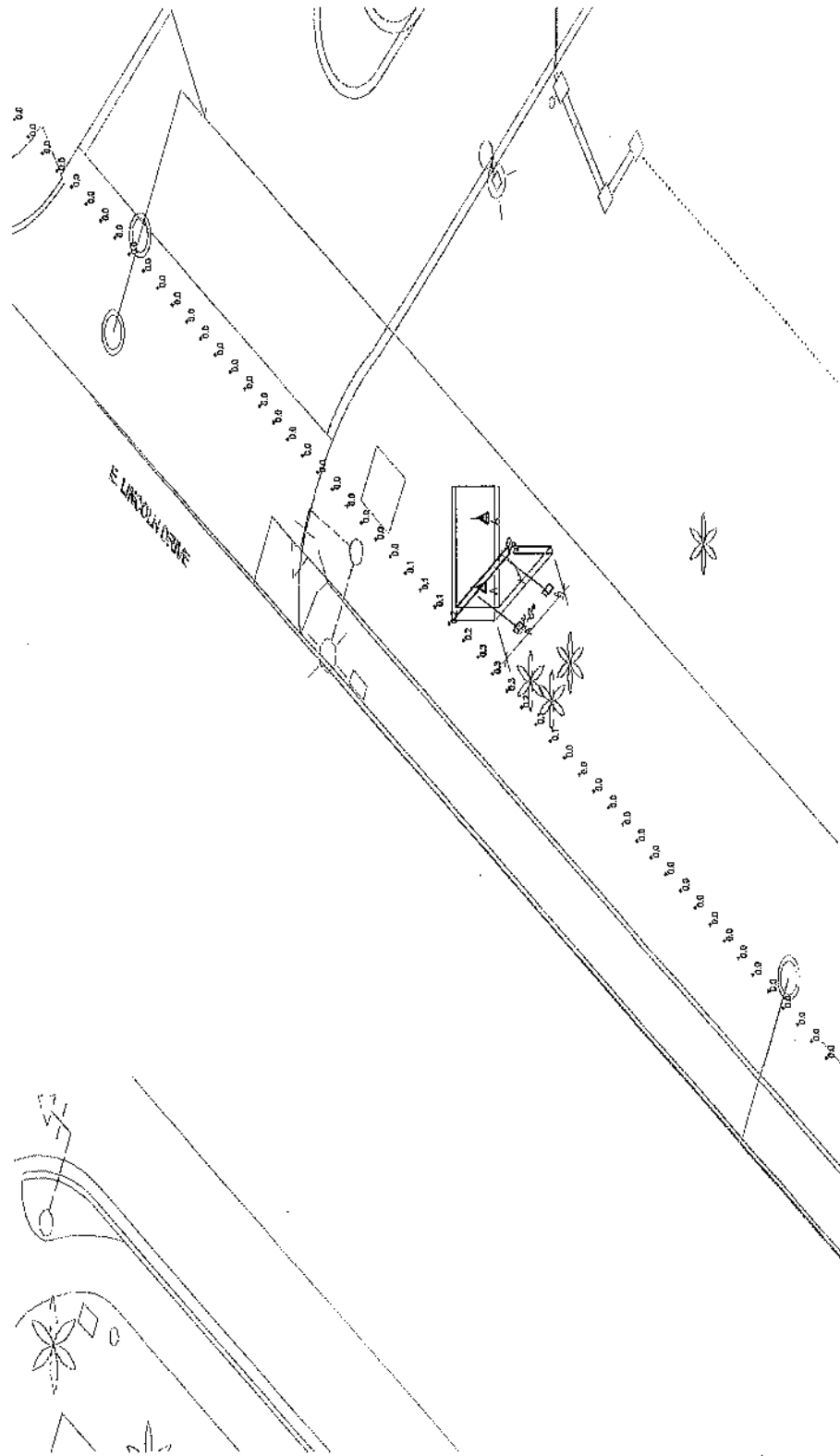


PHOTOMETRIC PLAN - ENTRY SIGN

NORTHEAST VIEW

1 SCALE: NTS

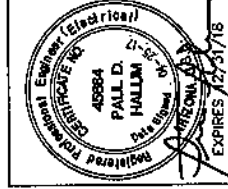
		Design Group Electrical Design and Consulting 2415 E. Camelback Rd., Phoenix, AZ T: 602-553-1191 E: info@designgroup.org Drawn By: Reden S. Proj. No. 17-XXX	Project: EL CHORRO LODGE ENTRY SIGN 5550 EAST LINCOLN DRIVE PARADISE VALLEY, AZ 85253
	Sheet Contents: PHOTOMETRIC PLAN - ENTRY SIGN	Rev. Date: Description: Scale: NTS Drawing No: SKE-1	Expires: 12/31/18



1 PHOTOMETRIC PLAN - ENTRY SIGN

NORTHEAST VIEW

SCALE: NTS

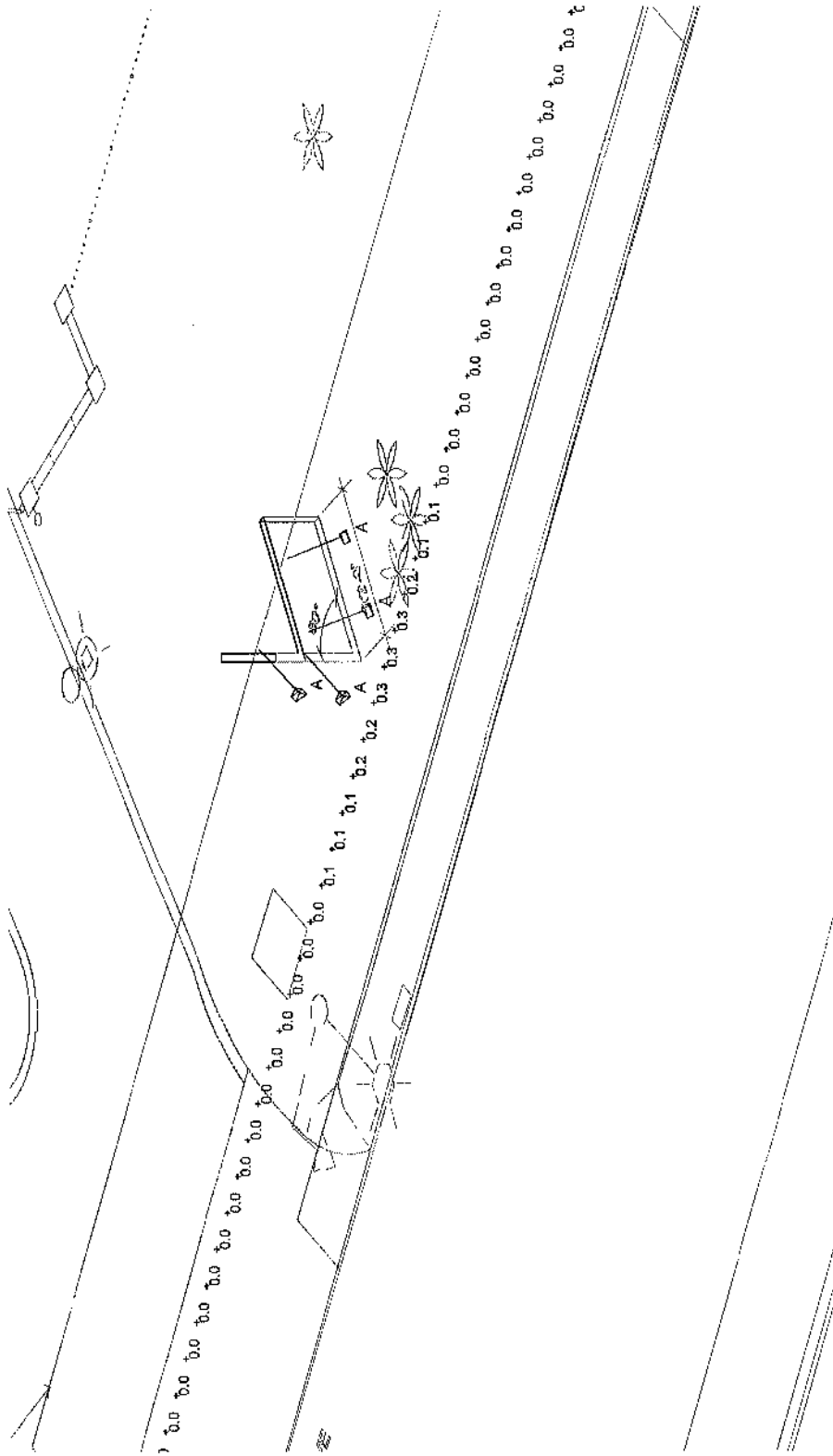


eDesign Group
 Electrical Design and Consulting
 2415 E. Camelback Rd., Phoenix, AZ
 T: 602-553-1191 E: info@edesigngroup.org

Drawn By: Redden S. Proj. No.: 17-XXXX

Sheet Contents:
**PHOTOMETRIC PLAN -
 ENTRY SIGN**

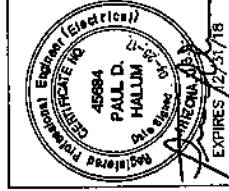
Project: EL CHORRO LODGE ENTRY SIGN 5550 EAST LINCOLN DRIVE PARADISE VALLEY, AZ 85253	
Rev. Date:	Description:
Scale: NTS	Drawing No: SKE-1



1 PHOTOMETRIC PLAN - ENTRY SIGN

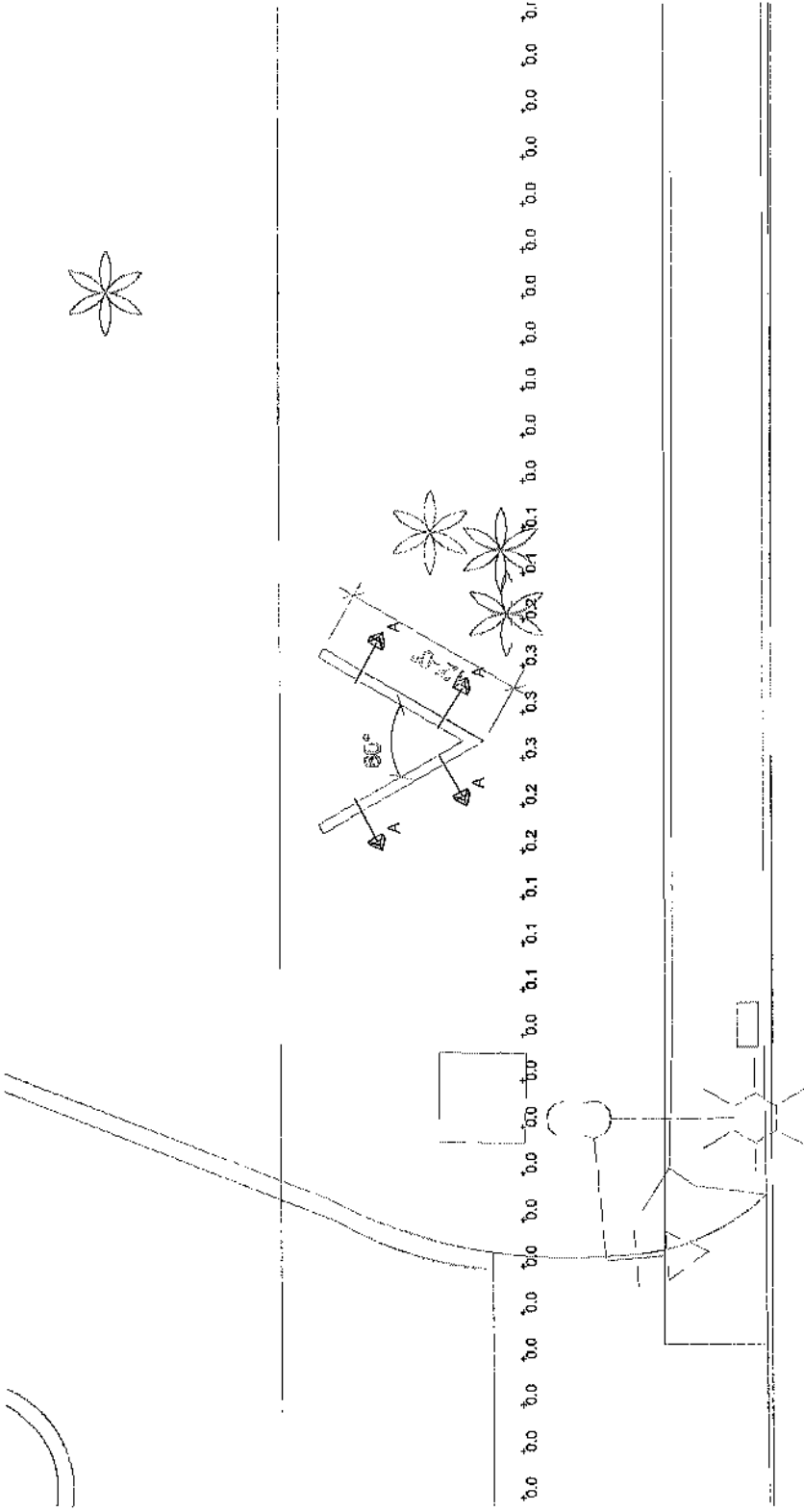
SCALE: NTS

SOUTHEAST VIEW



eDesign Group
 Electrical Design and Consulting
 2415 E Camelback Rd., Phoenix, AZ
 T: 502-553-1191 E: info@edesigngroup.org
 Drawn By: Redden S. Proj. No.: 17-XXX
 Sheet Contents:
 PHOTOMETRIC PLAN -
 ENTRY SIGN

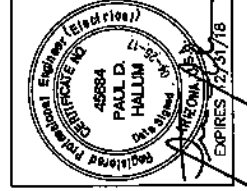
Project: EL CHORRO LODGE ENTRY SIGN 5550 EAST LINCOLN DRIVE PARADISE VALLEY, AZ 85263	
Rev.	Date: Description: Scale: NTS Drawing No: SKE-2



PHOTOMETRIC PLAN - ENTRY SIGN

1
SCALE: NTS

PLAN VIEW



Design Group
Electrical Design and Consulting
2415 E. Camelback Rd., Phoenix, AZ
T: 602-553-1191 E: info@designgroup.org
Drawn By: Reden S. Proj. No.: 17-000

Sheet Contents:
**PHOTOMETRIC PLAN -
ENTRY SIGN**

Project: EL CHORRO LODGE ENTRY SIGN 5550 EAST LINCOLN DRIVE PARADISE VALLEY, AZ 85263	
Rev.	Date:
Description:	
Scale:	NTS
Drawing No: SKE-3	