



VICINITY MAP

Subject Property



"The Villas at Mountain Shadows – Amended"

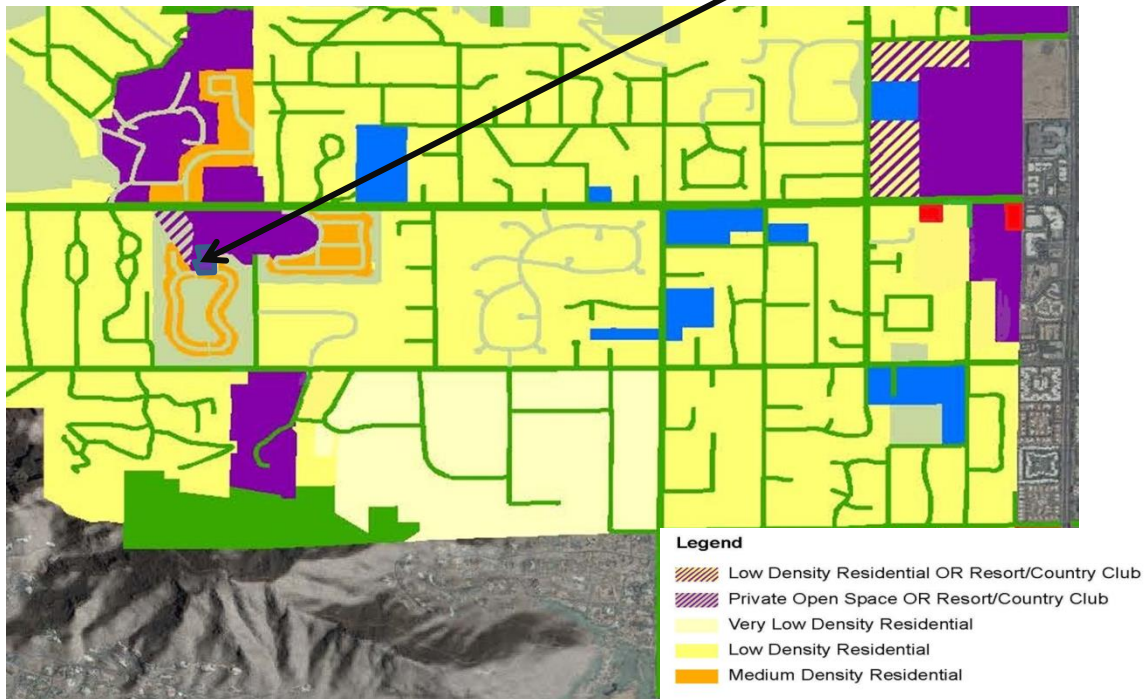
Re-Plat (RP 16-01)

Southwest Corner Lincoln Drive and 56th Street (Assessor No. 169-30-103)



GENERAL PLAN

Subject Property



"The Villas at Mountain Shadows – Amended"

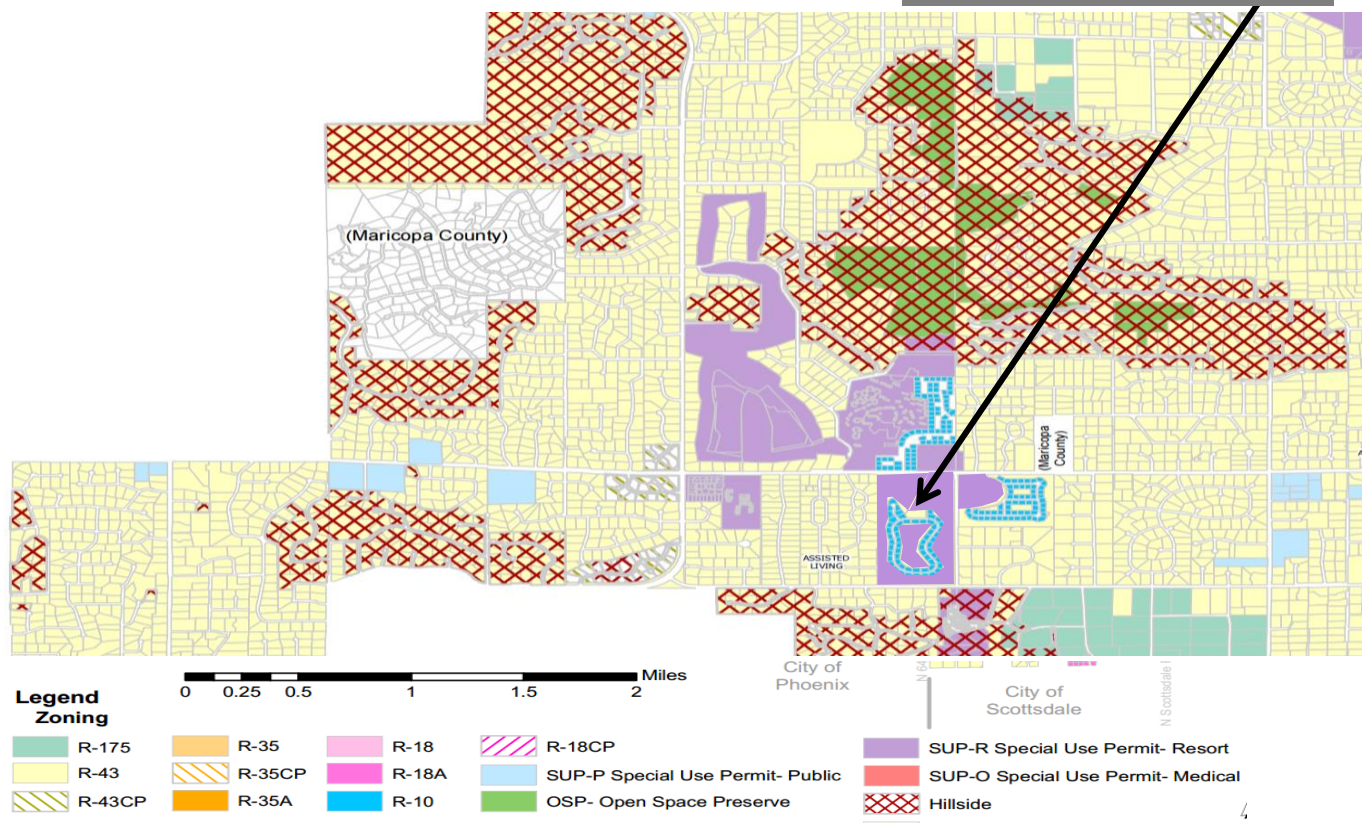
Re-Plat (RP 16-01)

Southwest Corner Lincoln Drive and 56th Street (Assessor No. 169-30-103)



ZONING MAP

Subject Property



3.08 acres of 67-acres

“The Villas at Mountain Shadows – Amended”

Re-Plat (RP 16-01)

Southwest Corner Lincoln Drive and 56th Street (Assessor No. 169-30-103)