

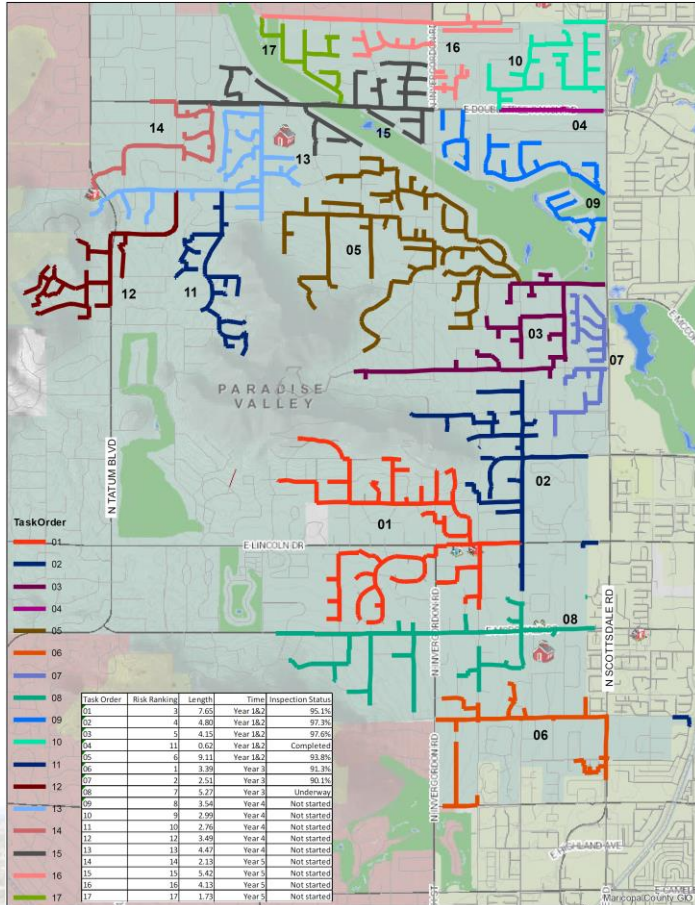
# **TOWN OF PARADISE VALLEY**

## **Award of Contract to Achen-Gardner Construction for Sanitary Sewer Repair**

**June 25, 2020**



# SANITARY SEWER ASSESSMENT PROGRAM



## Sewer Assessment Program

- Required per IGA with City of Scottsdale
- 5 Year Program with 17 Task Orders
- Currently in Year 4 of 5
- Making Repairs As Identified
- Pipes & Manholes Inspected, Videos Taken and Numerically Ranked
- Any Ductile Iron Pipe Identified to be Lined
- Consultation with City of Scottsdale
- Typical Defects Found
  - a. Offset Joints
  - b. Structural Pipe Defects
  - c. Manhole Corrosion
  - d. Buried Manholes & Cleanouts



# PROJECT SCOPE

- Repair Structural Defects Identified By Sewer Assessment
  - Six Locations with Ductile Iron Pipe
  - 1,273' of Repairs
  - Construction Contract Amount: \$281,842.96
  - Cooperative Use Contract with Achen Gardner Construction
- Repair Process Includes:
  - Resident Notification
  - Pre-Installation Video & Cleaning
  - Bypass Pumping
  - Cast In Place Pipe (CIPP) Lining Technology
  - Restore Residential Connections



Liner Installation



# CAST IN PLACE PIPE (CIPP) LINING INSTALLATION <sup>4</sup>



UV Light Installation

## Previous DIP Sewer Lining Projects

- FY18-19: 650'
  - FY19-20: 2,618'
  - FY20-21: 1,273'
- 
- Maps of sewer lining locations and sewer lining specifications prepared by Project Engineering Consultants under separate contract



# CAST IN PLACE PIPE (CIPP) LINING INSTALLATION <sup>5</sup>



Pre-Lining



Post-Lining



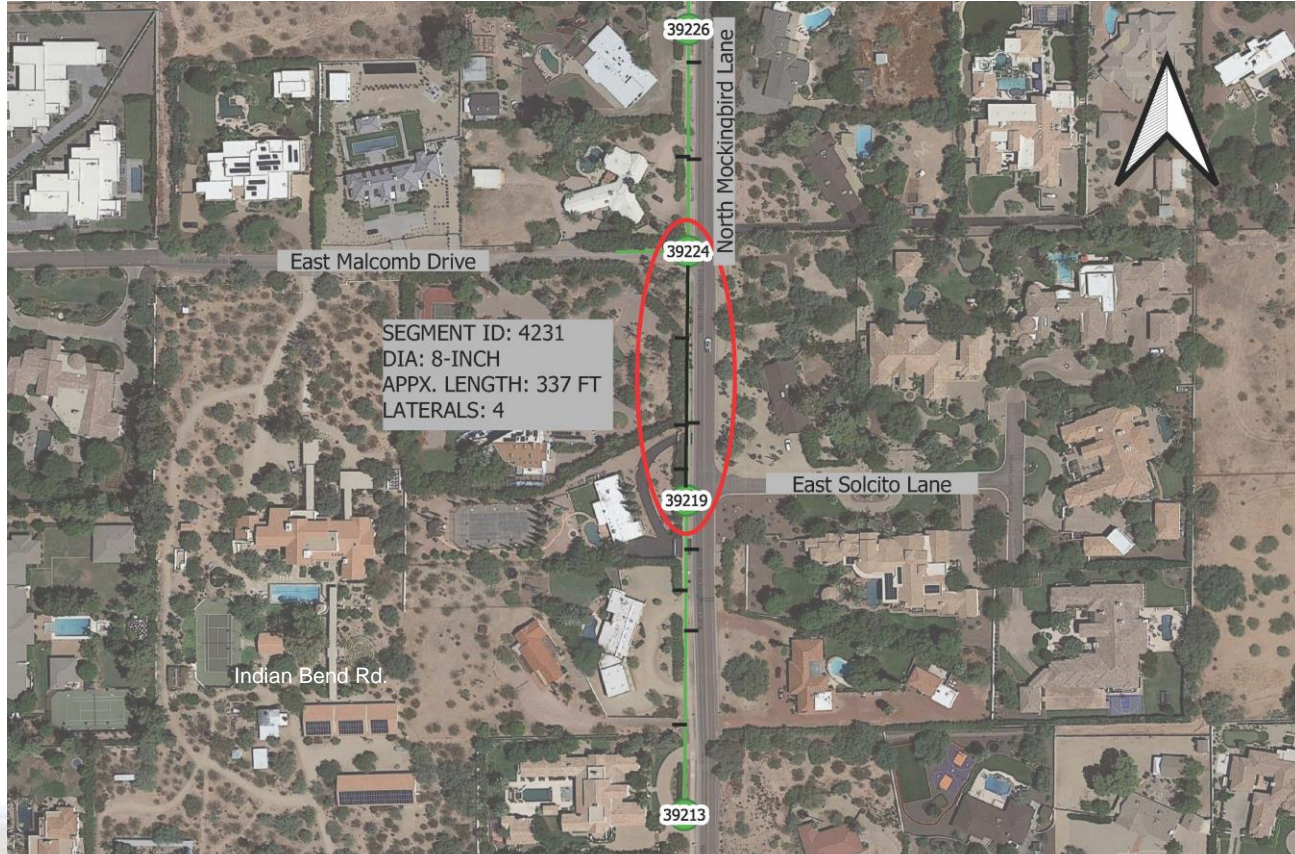
# SAGUARO PL. SANITARY SEWER REPAIRS



SEGMENT 11023, MH 45268 TO MH 45274



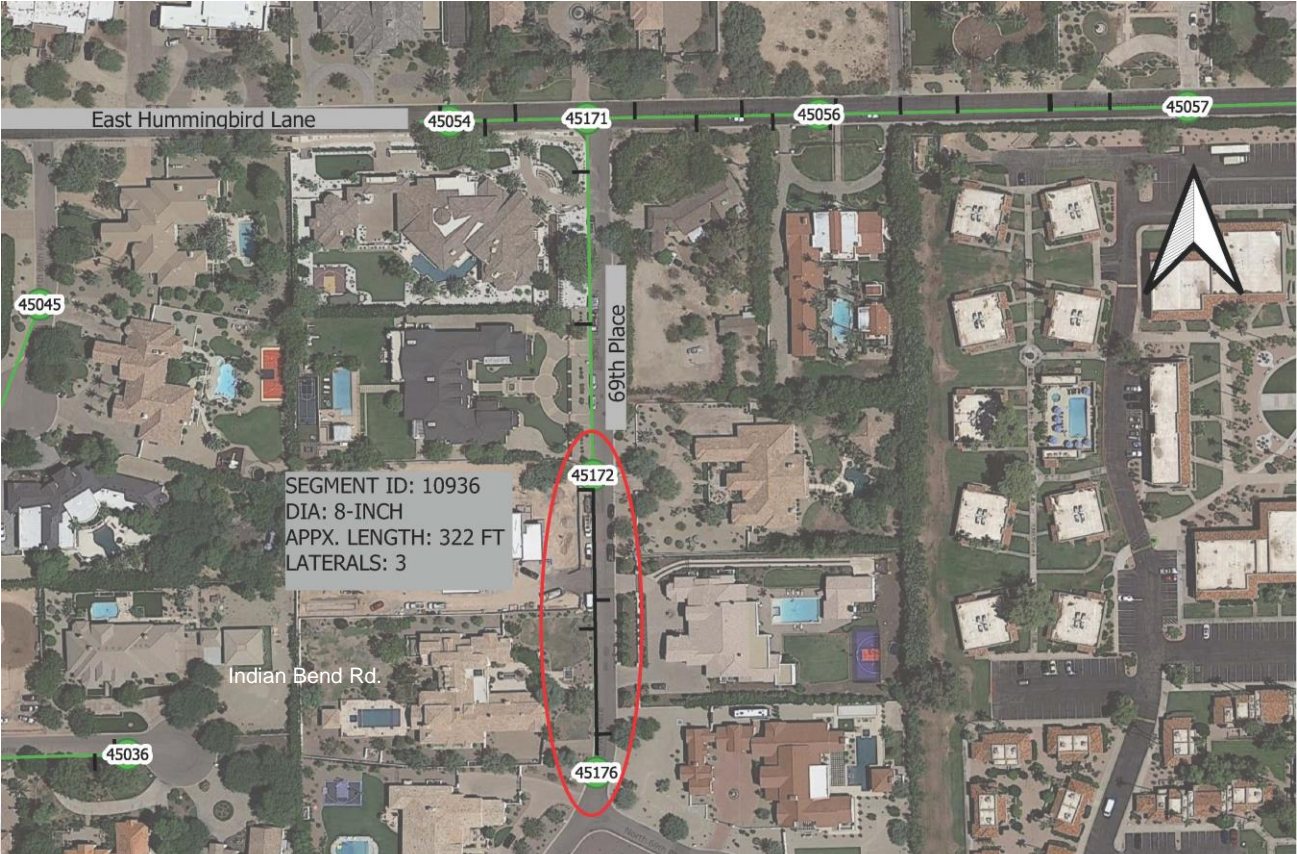
# MOCKINGBIRD LN SANITARY SEWER REPAIRS



SEGMENT 4231, MH 39224 TO MH 39219



# 69<sup>TH</sup> PL SANITARY SEWER REPAIRS



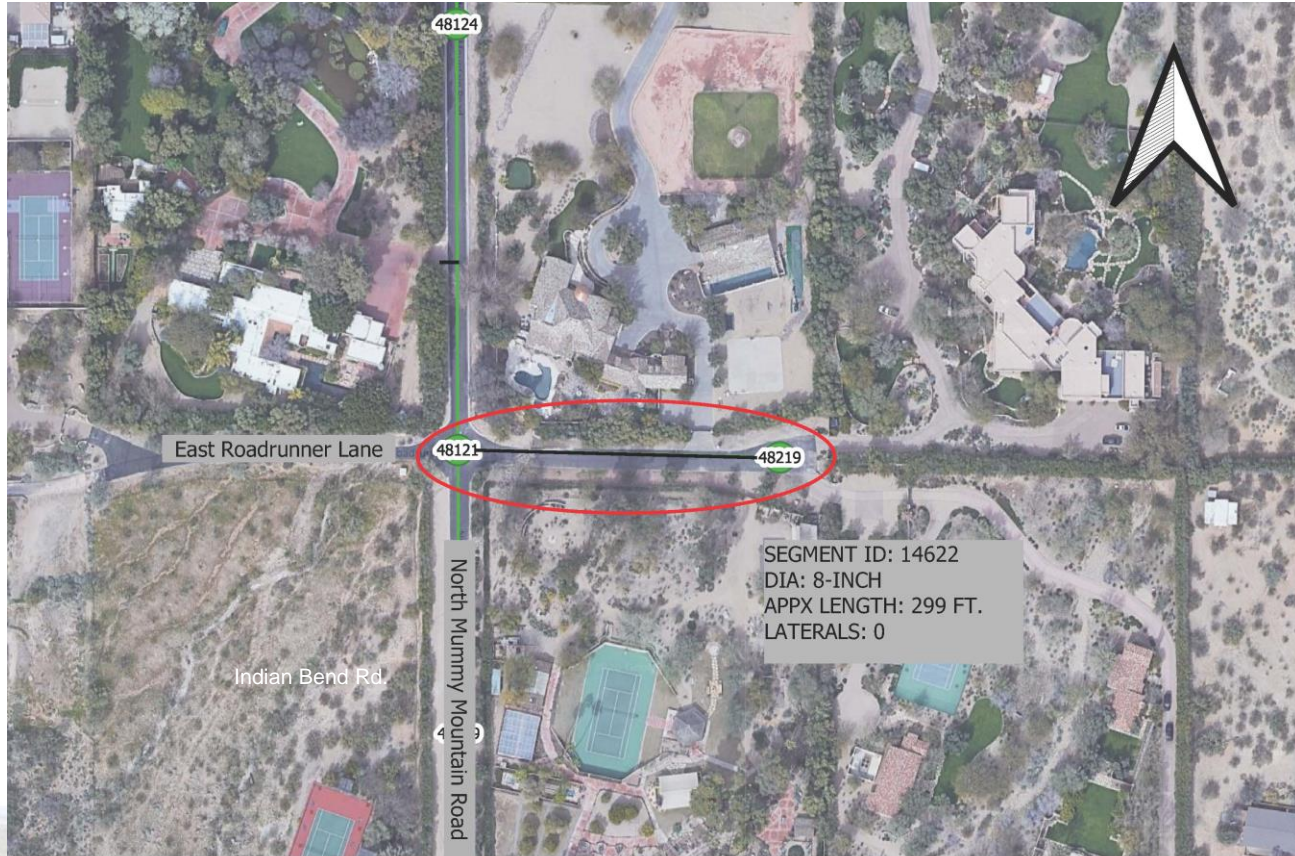
SEGMENT ID: 10936  
DIA: 8-INCH  
APPX. LENGTH: 322 FT  
LATERALS: 3

SEGMENT 10936, MH 45172 TO MH 45176





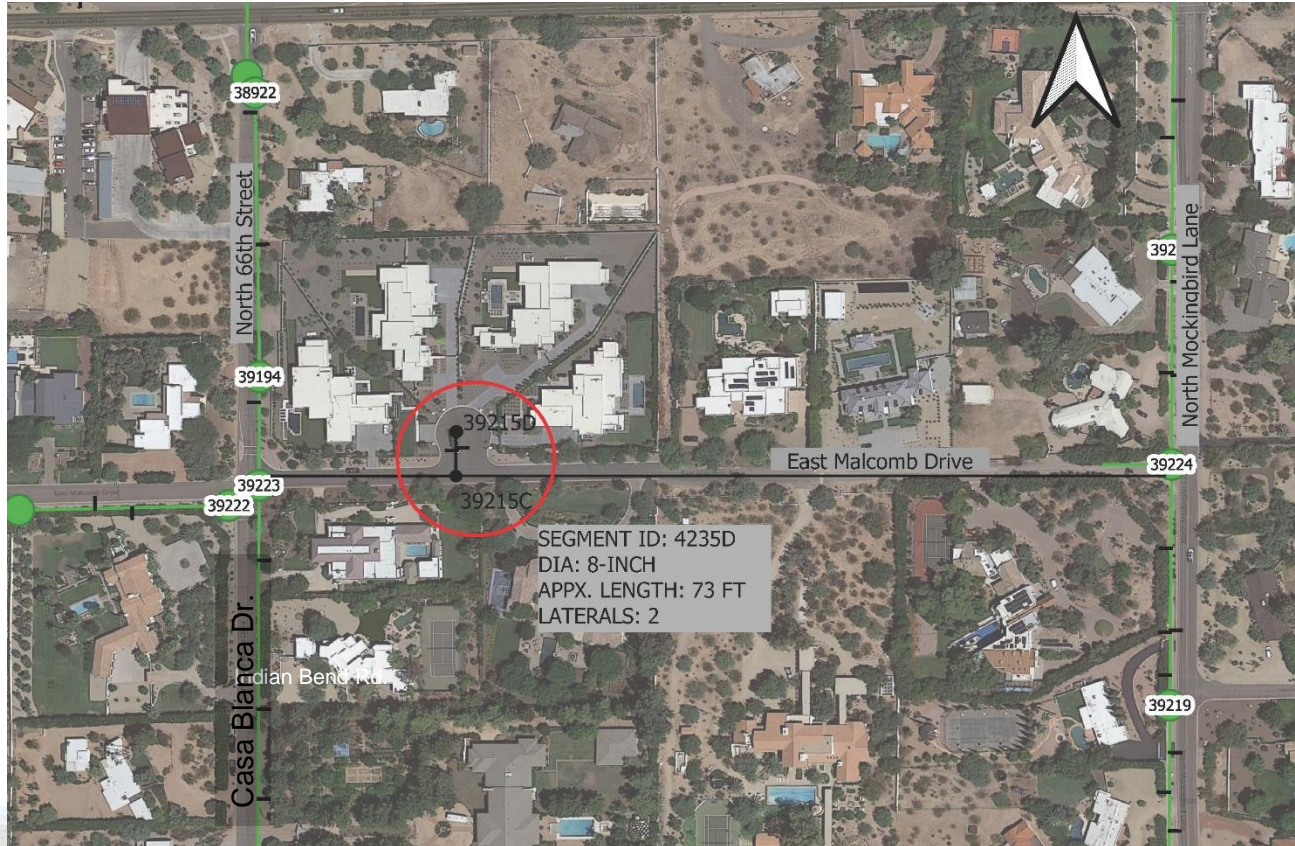
# ROADRUNNER LN SANITARY SEWER REPAIRS



SEGMENT 14622, MH 48121 TO MH 48219



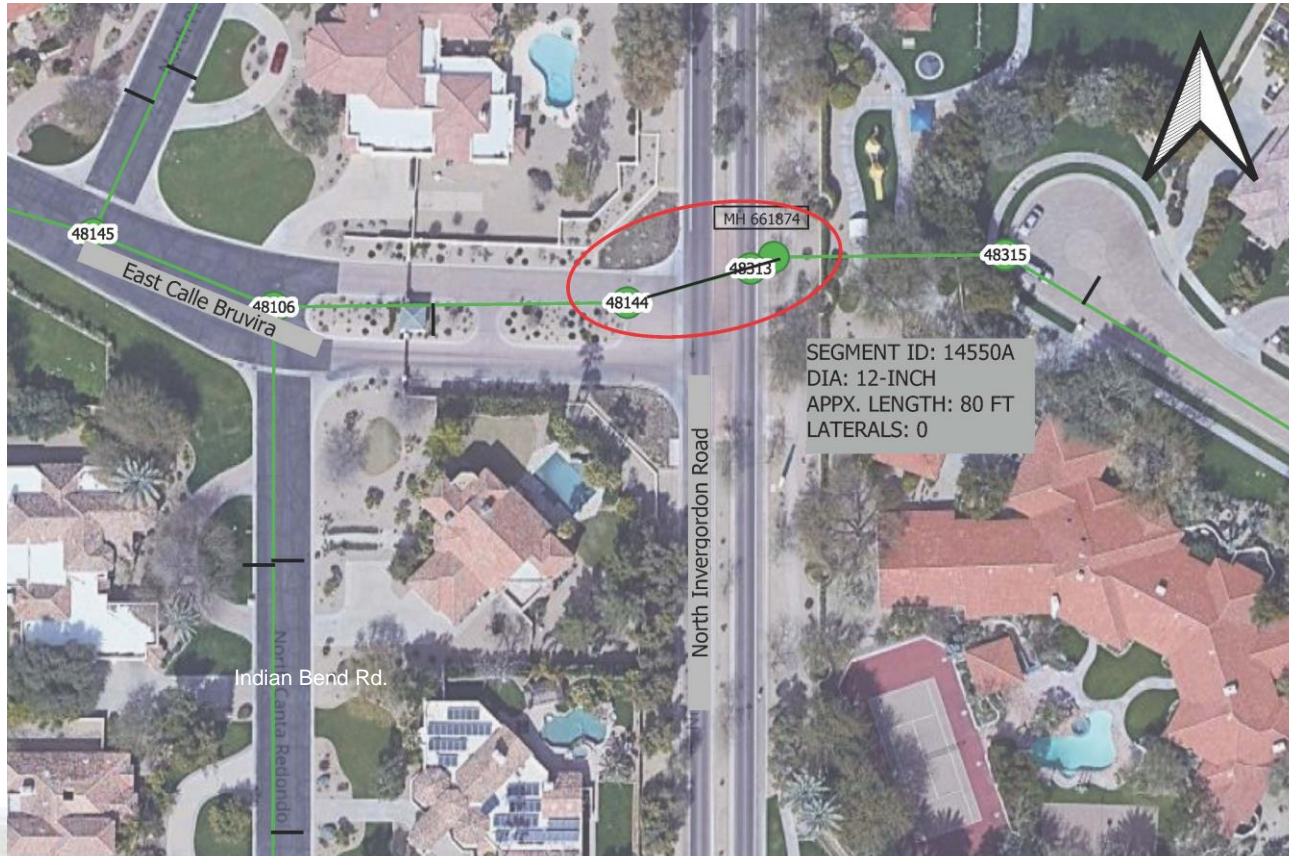
# MALCOMB DR SANITARY SEWER REPAIRS



SEGMENT 4235D, MH 39215D TO MH 39215C



# INVERGORDON RD SANITARY SEWER REPAIRS



SEGMENT ID: 14550A  
DIA: 12-INCH  
APPX. LENGTH: 80 FT  
LATERALS: 0

SEGMENT 14550A, MH 48144 TO MH 661874



# SEWER REPAIR CONSTRUCTION CONTRACT

---

As presented to Town Council at the June 11<sup>th</sup> Study Session, the proposed construction contract in the amount of \$281,842.96 with Achen Gardner Construction, LLC is within the Town's FY20-21 sanitary sewer repair budget of \$400,000.00

The construction contract includes a \$10,000.00 Owner's Contingency.

The construction contract is a Cooperative Purchasing Agreement based on the City of Scottsdale's Job Order Contract for citywide underground water resources construction held by Achen Gardner Construction, LLC.

Achen Gardner Construction, LLC has successfully completed similar sewer lining projects for the Town in FY18-19 and FY19-20.



# SEWER REPAIRS CONSTRUCTION CONTRACT

---

Staff recommends approval of the construction contract with Achen Gardner Construction, LLC in the amount of \$281,842.96

Staff also recommends waiving the 14-day wait period to execute the contract.



# QUESTIONS?

