



# VICINITY MAP

Subject Property



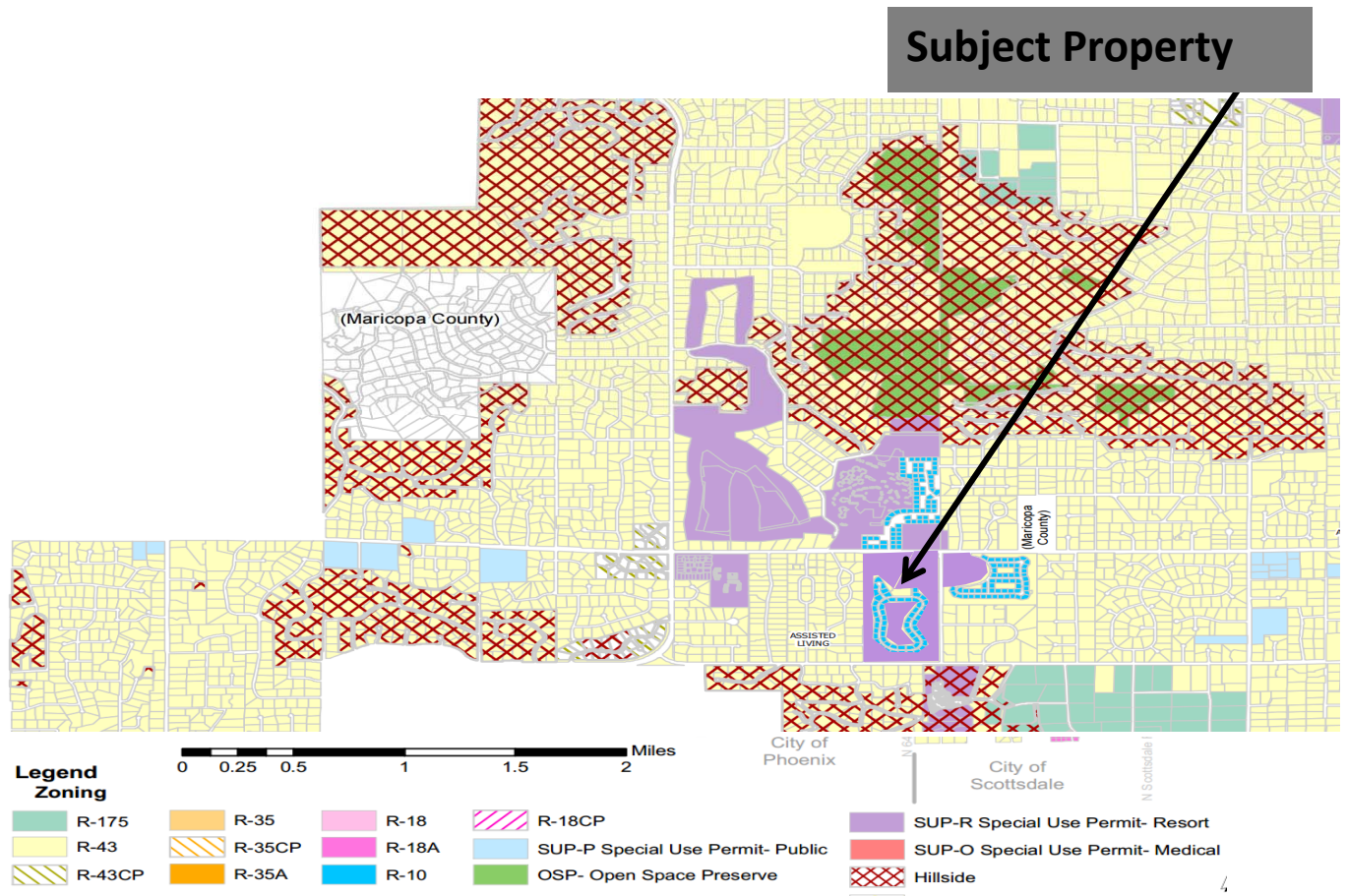
"The Villas at Mountain Shadows II – Amended"

Re-Plat (RP 16-02)

Southwest Corner Lincoln Drive and 56<sup>th</sup> Street (Portion Assessor No. 169-30-104)



# ZONING MAP



1.97 acres of 67-acre

“The Villas at Mountain Shadows II – Amended”

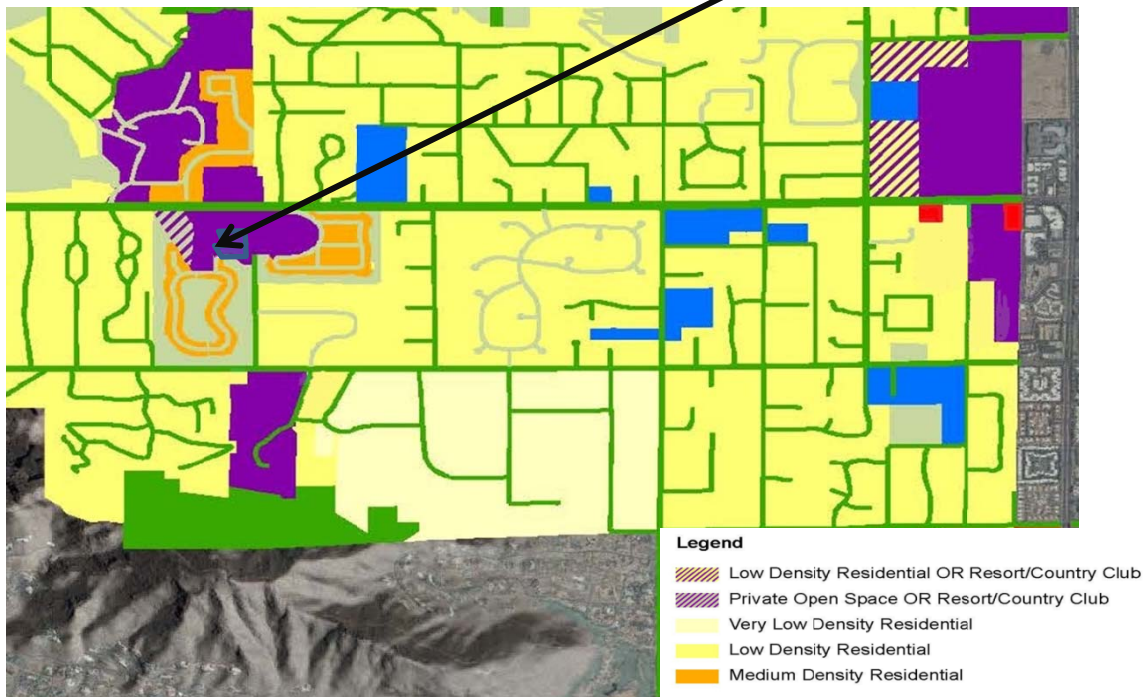
Re-Plat (RP 16-02)

Southwest Corner Lincoln Drive and 56<sup>th</sup> Street (Portion Assessor No. 169-30-104)



# GENERAL PLAN

Subject Property



"The Villas at Mountain Shadows II – Amended"

Re-Plat (RP 16-02)

Southwest Corner Lincoln Drive and 56<sup>th</sup> Street (Portion Assessor No. 169-30-104)