

mountain view medical center, LLC
Mountain View Medical Center Redevelopment
10555, 10565, 10575, 10585, 10595, 10599 N. Tatum Blvd.,
Paradise Valley, Arizona 85253

CLIENT CONTACT

mountain view medical center
8014 N. 14th St
Phoenix, AZ 85018

602.802.8106 t

PROJECT NO. **2018_041** DATE OF ISSUE **11.01.2018**

REVISION NO. **1** DATE **09.26.2018**
2 DATE **11.01.2018**

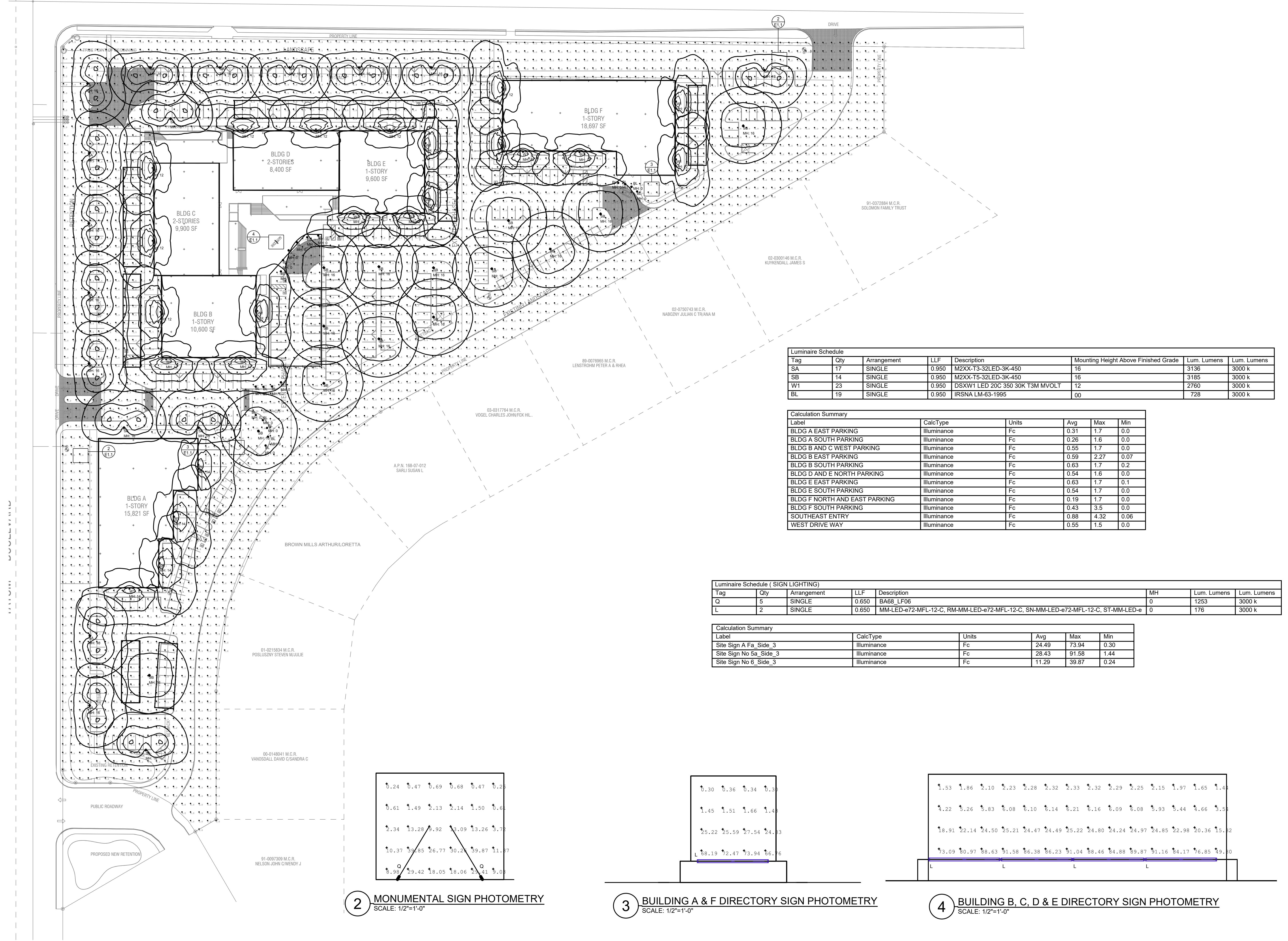
PROJECT TEAM **John Cantrell** DRAWN BY **BD**

PROJECT PHASE
SUP major amendment
Review #3

SHEET CONTENTS
photometric site plan

SHEET NO.

E-1.1



Luminaire Schedule

Tag	Qty	Arrangement	LLF	Description	Mounting Height Above Finished Grade	Lum. Lumens	Lum. Lumens
SA	17	SINGLE	0.950	M2XX-T3-32LED-3K-450	16	3136	3000 k
SB	14	SINGLE	0.950	M2XX-T5-32LED-3K-450	16	3185	3000 k
W1	23	SINGLE	0.950	DSXW1 LED 20C 350 30K T3M MVOLT	12	2760	3000 k
BL	19	SINGLE	0.950	IRSNA LM-63-1995	00	728	3000 k

Calculation Summary

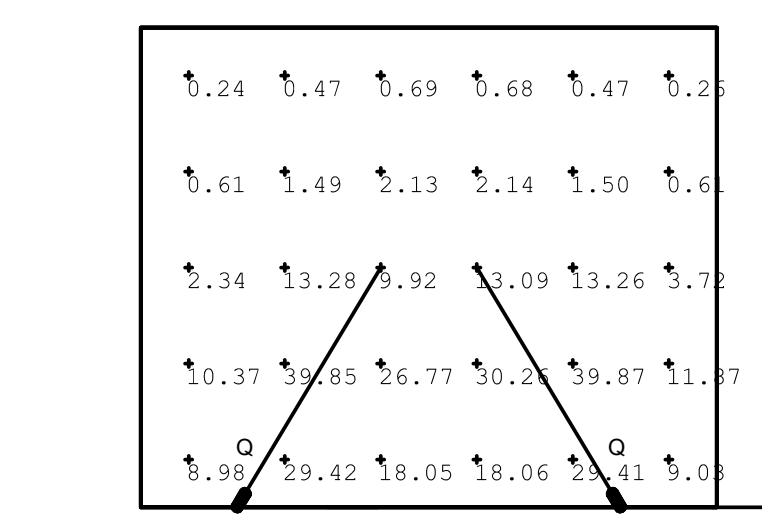
Label	CalcType	Units	Avg	Max	Min
BLDG A EAST PARKING	Illuminance	Fc	0.31	1.7	0.0
BLDG A SOUTH PARKING	Illuminance	Fc	0.26	1.6	0.0
BLDG B AND C WEST PARKING	Illuminance	Fc	0.55	1.7	0.0
BLDG B EAST PARKING	Illuminance	Fc	0.59	2.27	0.07
BLDG B SOUTH PARKING	Illuminance	Fc	0.63	1.7	0.2
BLDG D AND E NORTH PARKING	Illuminance	Fc	0.54	1.6	0.0
BLDG E EAST PARKING	Illuminance	Fc	0.63	1.7	0.1
BLDG E SOUTH PARKING	Illuminance	Fc	0.54	1.7	0.0
BLDG F NORTH AND EAST PARKING	Illuminance	Fc	0.19	1.7	0.0
BLDG F SOUTH PARKING	Illuminance	Fc	0.43	3.5	0.0
SOUTHEAST ENTRY	Illuminance	Fc	0.88	4.32	0.06
WEST DRIVE WAY	Illuminance	Fc	0.55	1.5	0.0

Luminaire Schedule (SIGN LIGHTING)

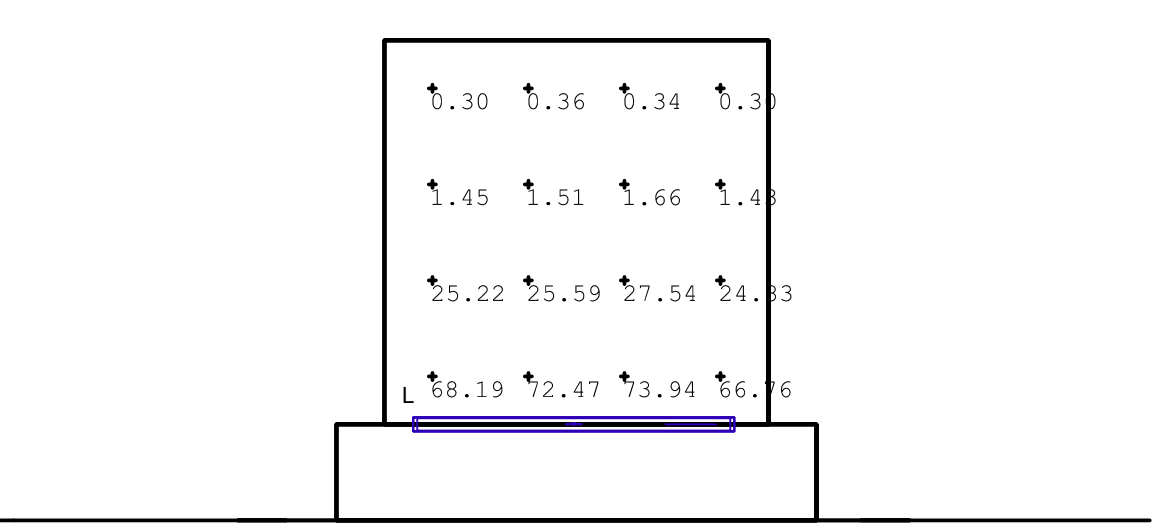
Tag	Qty	Arrangement	LLF	Description	MH	Lum. Lumens	Lum. Lumens
Q	5	SINGLE	0.650	BA68_LF06	0	1253	3000 k
L	2	SINGLE	0.650	MM-LED-e72-MFL-12-C, RM-MM-LED-e72-MFL-12-C, SN-MM-LED-e72-MFL-12-C, ST-MM-LED-e	0	176	3000 k

Calculation Summary

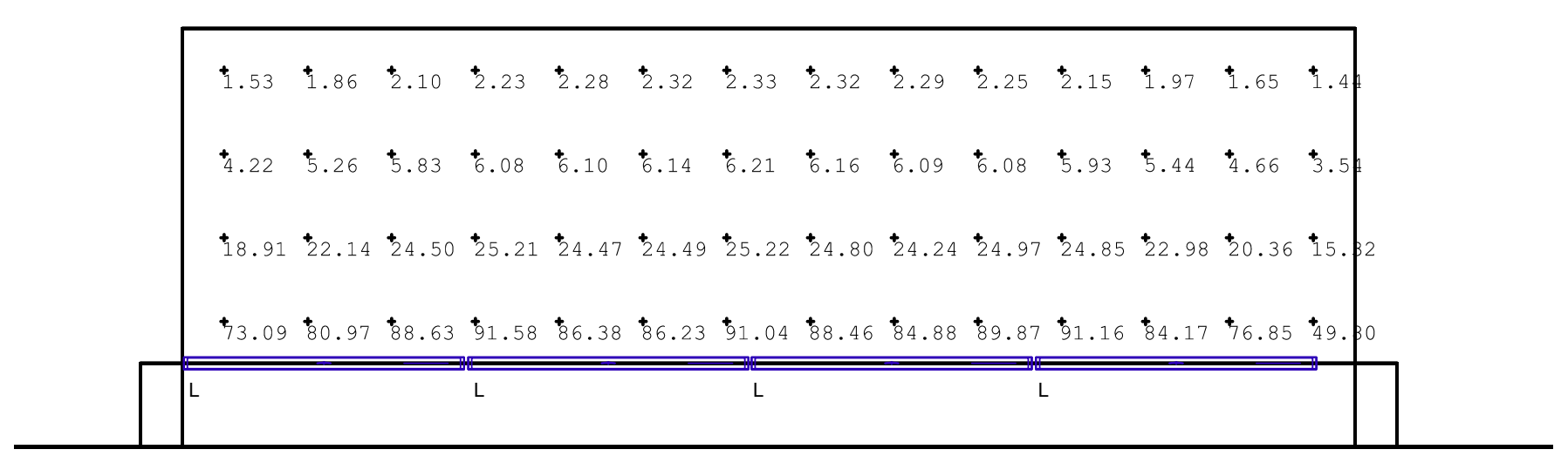
Label	CalcType	Units	Avg	Max	Min
Site Sign A Fa_Side_3	Illuminance	Fc	24.49	73.94	0.30
Site Sign No 5a_Side_3	Illuminance	Fc	28.43	91.58	1.44
Site Sign No 6_Side_3	Illuminance	Fc	11.29	39.87	0.24



2 MONUMENTAL SIGN PHOTOMETRY
SCALE: 1/2"=1'-0"



3 BUILDING A & F DIRECTORY SIGN PHOTOMETRY
SCALE: 1/2"=1'-0"



4 BUILDING B, C, D & E DIRECTORY SIGN PHOTOMETRY
SCALE: 1/2"=1'-0"

1 PHOTOMETRIC SITE PLAN
1"=40'-0"

DELTA STAR™

PROJECT: _____
TYPE: _____
CATALOG NUMBER: _____
SOURCE: _____
NOTES: _____

CATALOG NUMBER LOGIC

Example: DS - LED - e65 - SP - A7 - BZW - 12 - 11 - A - 360SL

Material
Blank - Aluminum
B - Brass
S - Stainless Steel

Series
DS - Delta Star™

Source
LED - "i" Technology with Integral Dimming Driver (See Specifications for Dimming)
Designed for use with recessed JWBK BSS™ transformers. Requires magnetic Low Voltage driver.

LED Type
e64 - 7W LED/2.7K
e65 - 7W LED/3K
e66 - 7W LED/4K
e74 - 7W LED/Amber

Optics
NSP - Narrow Spot (Red Indicator)
SP - Spot (Green Indicator)
MFL - Medium Flood (Yellow Indicator)
WFL - Wide Flood (Blue Indicator)

Adjust-e-Lume® Output Intensity (Choose factory setting)
A9 Standards, A6, A7, A8, A9, A4, A3, A2, A1

Finish

Aluminum Finish		Brass Finish		Premium Finish		
Powder Coat Color	Satin	Winks	MAC	ABP	CMG	RMG
Bronze	BZP	BZW	Polished	AMG	CMC	SDS
Black	BLP	BLW	Matte	ADW	CMW	SMG
White (Gloss)	WHP	WHW	Brushed	BCW	HWS	TFW
Aluminum	SAP	---	Polished	BGP	MBP	WCP
Venise	---	VEN	Brushed	CBP	OCW	WCP

Lens Type
12 - Soft Focus Lens
13 - Rectilinear Lens

Shielding
11 - Honeycomb Baffle

Cap Style
A - 45°
B - 90°
D - 45° less Weep Hole (Interior Use Only)
E - 90° less Weep Hole (Interior Use Only)

Option
360SL - 360° Rotational Knuckle Mounting System

DRIVER DATA

Input Voltage	Inrush Current	Operating Current	Dimmable	Operation Ambient Temperature
120V/AC 50/60Hz	<250mA (non-dimmed)	700mA	Magnetic Low Voltage Dimmer	-22° to 184° F (30° C - 90° C)

LM79 DATA

BK No.	CCT (Typ.)	Input Watts (Typ.)	CR1	CR2	Beam Type	Angle	e66	Visual Indicator
e64	2700K	7.0	80	50,000	Narrow Spot	13°	6889	Red Dot
e65	3000K	7.0	80	50,000	Spot	15°	5225	Green Dot
e66	4000K	7.0	80	50,000	Medium Flood	23°	1964	Yellow Dot
e74	Amber (550nm)	7.0	---	50,000	Wide Flood	31°	1390	Blue Dot

L70 DATA

CR1	CR2	CR3	CR4
80	50,000	50,000	50,000

***OPTICAL DATA**

Beam Type	Angle	e66	Visual Indicator
Narrow Spot	13°	6889	Red Dot
Spot	15°	5225	Green Dot
Medium Flood	23°	1964	Yellow Dot
Wide Flood	31°	1390	Blue Dot

B-K LIGHTING 40429 Brickyard Drive • Madera, CA 93606 • USA
509.438.0900 • FAX 509.438.0900
www.bklighting.com • info@bklighting.com

RELEASED 06-07-16 DRAWING NUMBER SUB000930

THIS DOCUMENT CONTAINS PROPRIETARY INFORMATION OF B-K LIGHTING, INC. AND THE RECIPIENT OF THIS DOCUMENT SHALL NOT CONVEY ANY RIGHTS TO REPRODUCE, DISCLOSE ITS CONTENTS, OR TO MANUFACTURE, USE OR SELL ANYTHING IT MAY CONTAIN, REPRODUCE, DISCLOSE OR USE WITHOUT SPECIFIC WRITTEN AUTHORIZATION OF B-K LIGHTING, INC. IN ANY MANNER.

DELTA STAR™

PROJECT: _____
TYPE: _____
CATALOG NUMBER: _____
SOURCE: _____
NOTES: _____

"A/D" CAP

"B/E" CAP

360 SL™

Accessories (Configure separately)
Mounting: Power Rail™, Power Canopy™, Tie Strap™, Storm, Capsules, LHM™, T8 Series, Power Rail™, LHM™

Horizontal Rotation (Optional 360SL™ Knuckle)

Specifications

GreenSource Initiative™
Metal and packaging components are made from recycled materials. Manufactured using renewable solar energy produced on-site. Recycled plastic and glass components are made from 100% recycled materials. No chlorofluorocarbons (CFC's). Use of this product may qualify for GreenSource efficacy and recycling incentives. Contact www.bklighting.com/greensource for program requirements.

Materials
Furnished in Copper-Free Aluminum (Type 6061-T6), Brass (Type 360) or Stainless Steel (Type 304).

Body
Fully machined from solid billet. Unidirectional design provides enclosed, water proof wiring and integral heat sink for maximum component life. Integral knuckle for maximum mechanical strength. High temperature, silicone "O" ring provides water tight seal.

Knuckle
The "LOCK" rotating "O" Ring Compression Knuckle is composed of two components. The first is integral to the body and features an internal machined base. The second is machined from solid billet and features a second, reverse angle taper. The resultant mechanical taper lock allows a full 360° vertical adjustment without the use of serrated teeth, which inherently limit aiming. High temperature, silicone "O" ring provides water tight seal and compressive resistance to maintain fixture position. Design achieves 73 to 80 degree beam angle adjustment to ensure maximum optical efficiency. If you prefer to mounting.

Optional 360SL™ additionally provides limited source control with 360° horizontal rotation in addition to vertical adjustment.

Cap
Fully machined. Accommodates (1) lens or (lower media. Choose from 45° cap (A or D), or 90° deep base with 90° cap (E or T) cap styles. A and B cap include weep hole for water and debris drainage. T and T' caps exclude weep hole and are for interior use only.

Leak
Shock resistant, tempered, glass lens is factory adhered to fixture cap and provides hermetically sealed optical enclosure. Specify soft focus (S) or rectilinear (R) lens.

BKSL™
Integrated solid state system with "i" technology is suitable for field upgrade. Modular design with electrical quick disconnects permits field maintenance - high power, forward three source complex with ANSI C78.37 electrical requirements. Exceeds ENERGY STAR™ lamp requirements. LM-80 certified components.

Optics
Interchangeable OPTIK™ modules permit field changes to optical distribution. Color-coated for easy replacement. Narrow Spot (NSP) = Red, Spot (SP) = Green, Medium Flood (MFL) = Yellow, Wide Flood (WFL) = Blue.

Wiring
Teflon coated, 18AWG, 600V, 250° C rated and certified to UL 1595 standard.

Hardware
Tamper resistant, stainless steel hardware. LOCK™ aiming screw is additionally black oxide treated for additional corrosion resistance.

Finish
Standard: our exclusive RoHS compliant, 15 stage chrome-free process cleans and corrosion resists. Popular powder coating. Lens components are available in powder coat or hardcoated metal finish. Stainless steel components are available in hardcoated metal finish. (Brushed finish for interior use only).

Warranty
3 year limited warranty.

Certification and Listing
UL listed to ENEC LM-79 CL, listed Certified to CA/CESV/ANSI Standards. RoHS compliant. Suitable for indoor or outdoor use. Suitable for use in wet locations. Suitable for installation within 4' of the ground. (See Notes in USA.)

Adjust-e-Lume® (Pat. Pending)
Integrates electronic dimmer, dynamic Lumen response at the individual fixture. Indexed (100% to 25% rms) lumen output. Maintains output at dimmed level or may be changed as conditions require. Specify factory preset output intensity.

RoHS **REACH** **SVHC**

B-K LIGHTING 40429 Brickyard Drive • Madera, CA 93606 • USA
509.438.0900 • FAX 509.438.0900
www.bklighting.com • info@bklighting.com

RELEASED 06-07-16 DRAWING NUMBER SUB000930

adjust-e-lume TECHNOLOGY

Select OptiK™ for desired distribution

RED - Narrow Spot (NSP)
GREEN - Spot (SP)
YELLOW - Medium Flood (MFL)
BLUE - Wide Flood (WFL)

Select OptiK™ for desired output

1 2 3 4 5 6

Narrow Spot

Beam Angle	4K	3K	2.7K
10°	17.2	15.3	15.0
12°	20.9	23.9	23.4
15°	27.6	42.6	41.6
18°	107.6	95.8	95.6
20°	400.6	383.3	374.6

Spot

Beam Angle	4K	3K	2.7K
10°	18.1	11.6	11.4
12°	20.4	18.3	17.8
15°	31.3	33.3	31.6
18°	81.6	72.7	71.0
20°	306.6	290.9	284.1

Medium Flood

Beam Angle	4K	3K	2.7K
10°	6.0	4.4	4.3
12°	13.8	13.3	13.0
15°	31.0	27.8	27.0
18°	124.0	110.4	107.8

Wide Flood

Beam Angle	4K	3K	2.7K
10°	5.1	4.4	4.4
12°	8.0	6.0	7.9
15°	20.3	18.1	17.7
18°	81.3	73.3	73.7

B-K LIGHTING 40429 Brickyard Drive • Madera, California 93606 • 559.438.5800
www.bklighting.com

3 LUMINAIRE TYPE "Q"
NTS

Linealuce

Design: Jean Michel Wilmotte (Kozzini)

may 2015

Linealuce

code BA68

Technical description
Luminaire with direct wall-washer emission designed for use with LED sources. Monochromatic, with plate for 28x1W Warm White (3100K) LEDs, optic with plastic lenses, FLOOD version. Complete with lamp and built-in electronic ballast. Extruded aluminium body subjected to phosphochromatization treatment, double primer, passivation at 120° C, die-cast aluminium end caps with 50/60. Shows a silicone gaskets subjected to post-cooling treatment at 200° C. Acrylic liquid paint finish with high resistance to atmospheric agents and UV rays, baking at 150° C. The optical assembly is closed with sodium-calcium tempered transparent clear semi-acid finished glass with artistic properties (in compliance with R12 class according to DIN 51330), 4mm thickness, fixed with silicone. Aluminium outer casing for installation with technopolymer caps that be ordered separately. Ready for through wiring by means of two PG11 nickel-plated brass cable clamps suitable for a 6.5-11mm cables contained in thermoplastic box fixed to the optical assembly. All external screws are made of stainless steel A2.

Installation
Recessed installation in pavement, wall and ceiling with outer casing to be ordered separately.

Size (mm)
1268x101x117

Colour
Grey (15)

Weight (kg)
6.30

Mounting
wall recessed | ceiling recessed | ground recessed

Wiring info
Electronic ballast inside the luminaire, 220-240V 50-60Hz.

Notes
Available with Cool White (6700K), red, green and amber LED on demand. Available accessories: chromatic filters, outer casing and safety cables for wall and ceiling installation.

Complies with EN60598-1 and pertinent regulations

850°K IK10 IP67

CE RoHS REACH SVHC

Product configuration: BA68+LED
LED: LED warm white

Product characteristics
Total lighting output [Lm]: 1253.38
Total power [W]: 37.2
Luminous efficacy (lm/W): 33.69
Life Time: 50,000h - L70 - B20 (Ta 25°C)

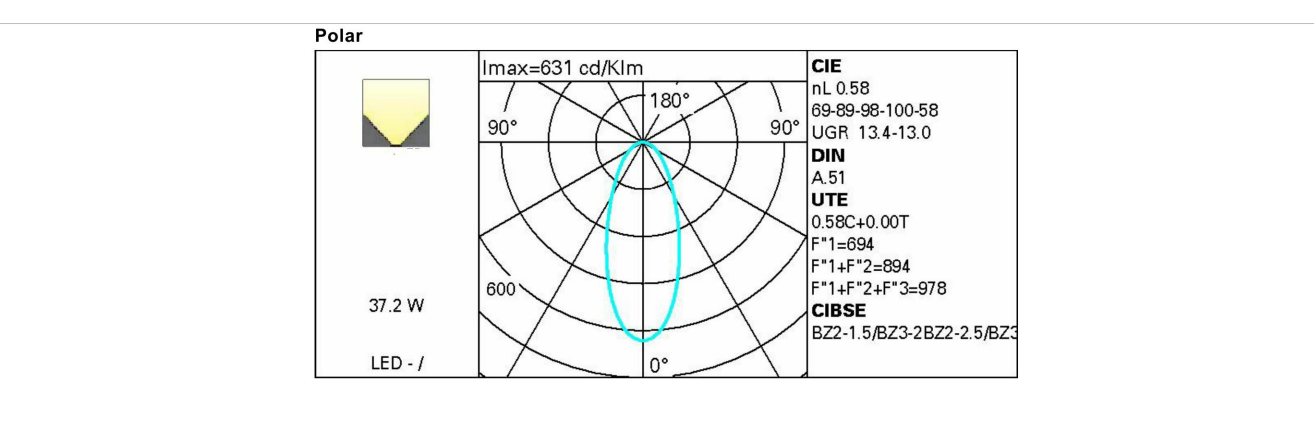
Total luminous flux at or above an angle of 90° [Lm]: 0
Emergency luminous flux [Lm]: 0
Voltage [V]: -
Number of optical assemblies: 1

Optical assembly Characteristics 1
Light Output Ratio (L.O.R.) [%]: 58
Lamp code: LED
ZVEE Code: LED
Nominal power [W]: 32
Nominal luminous [Lm]: 2163
Lamp maximum intensity [cd]: -
Beam angle [°]: 42°

Number of lamps for optical assembly: 1
Socket: -
Ballast losses [W]: 5.2
Colour temperature [K]: 3200
CRI: 80
Wavelength [nm]: -
MacAdam Step: <3

B-K LIGHTING 40429 Brickyard Drive • Madera, CA 93606 • USA
509.438.0900 • FAX 509.438.0900
www.bklighting.com • info@bklighting.com

RELEASED 06-07-16 DRAWING NUMBER SUB000930



4 LUMINAIRE TYPE "L"
NTS

BA68_EN 1 / 2

BA68_EN 2 / 2

orcutt winslow

2929 n central ave
eleventh floor
phoenix arizona 85012

602.257.1764 t
602.257.9029 f

www.owp.com

REGISTERED ARCHITECT
NOT FOR CONSTRUCTION
PHOENIX, ARIZONA, U.S.A.

HENDERSON ENGINEERS

5343 NORTH 16TH STREET, SUITE 460
PHOENIX, AZ 85016
TEL (602) 336-5200 FAX (602) 336-5201
WWW.HENDERSONENGINEERS.COM

1850003561
AZ. CORPORATE NUMBER: 10470-0
EXPIRES 06/30/19

mountain view medical center, LLC
Mountain View Medical Center Redevelopment
10555,10565,10575,10585,10595,10599 N. Tatum Blvd ,
Paradise Valley, Arizona 85253

CLIENT CONTACT

mountain view medical center, LLC
2814 N. Tatum St
Phoenix, AZ 85018

602.802.8106 t

PROJECT NO.
2018_041

DATE OF ISSUE
11.01.2018

REVISION NO.
1

DATE
09.26.2018

2

DATE
11.01.2018

PROJECT TEAM
John Cantrell

DRAWN BY
BD

PROJECT PHASE
SUP major amendment
Review #3

SHEET CONTENTS

photometric light fixture cut sheets

SHEET NO.

E-1.3

