

**GENERAL NOTES**

01. IT IS THE INTENT OF THESE DRAWINGS AND SPECIFICATIONS TO PROVIDE A LIGHTING SYSTEM WHICH IS COMPLETE AND OPERATIONAL. ALL MATERIALS AND EQUIPMENT NECESSARY TO ACCOMPLISH THIS INTENT SHALL BE FURNISHED AND INSTALLED BY THE ELECTRICAL CONTRACTOR. SUBSTITUTIONS TO SPECIFIED LIGHTING AND CONTROL EQUIPMENT SHALL NOT BE PERMITTED WITHOUT PRIOR REVIEW AND WRITTEN APPROVAL OF CREATIVE DESIGNS IN LIGHTING.
02. APPLICABLE REQUIREMENTS OF THE CURRENT NATIONAL ELECTRICAL CODE (NEC) AND STATE AND LOCAL CODES SHALL GOVERN AND DETERMINE THE MINIMUM STANDARD OF WORK. IN THE EVENT OF CONFLICT BETWEEN THIS DRAWING AND THE APPLICABLE CODE, THE CODE SHALL PREVAIL AND THE INSTALLATION SHALL BE MADE IN CONFORMANCE WITH THE CODE.
03. EXCEPT WHERE SPECIFICALLY NOTED, CONTRACTOR SHALL INSTALL ALL EQUIPMENT IN ACCORDANCE WITH MANUFACTURER'S RECOMMENDATIONS.
04. ALL WIRE SHALL BE COPPER.
05. ELECTRICAL CONTRACTOR SHALL PROVIDE PRIMARY AND SECONDARY OVERCURRENT PROTECTION FOR ALL 12-VOLT AND 24-VOLT REMOTE TRANSFORMERS AND LED DRIVERS. ELECTRICAL CONTRACTOR TO SIZE ALL SECONDARY WIRING FOR REMOTE TRANSFORMERS / DRIVERS TO PREVENT A VOLTAGE DROP OF MORE THAN 1 VOLT. FINAL LOCATION OF ALL REMOTE TRANSFORMERS / DRIVERS TO BE VERIFIED IN THE FIELD BY GENERAL CONTRACTOR AND OWNER'S REPRESENTATIVE.
06. ELECTRICAL CONTRACTOR SHALL COORDINATE INSTALLATION OF ALL LIGHTING EQUIPMENT WITH THE GENERAL CONTRACTOR AND ANY APPLICABLE SUB-CONTRACTOR (I.E. FRAMING, MECHANICAL, CABINETS, ETC.) PRIOR TO ROUGH-IN.
07. ALL TYPE 'Z#' DECORATIVE FIXTURES TO BE SUPPLIED BY OWNER, ASSEMBLED AND INSTALLED BY ELECTRICAL CONTRACTOR. VERIFY FINAL LOCATIONS AND MOUNTING HEIGHTS WITH OWNER AND/OR INTERIOR DESIGNER.
08. ALL RECESSED TRIMS AND/OR TRIM RINGS SHALL BE PAINTED TO MATCH COLOR OF CEILING (INTERIOR AND EXTERIOR).
09. ALL FLUORESCENT FIXTURES SHALL BE EQUIPPED WITH 100 PERCENT SOLID STATE ELECTRONIC BALLASTS, UNLESS OTHERWISE SPECIFIED. FIXTURES WITH MAGNETIC OR HYBRID ELECTRONIC BALLASTS WILL BE REJECTED AND REPLACED AT CONTRACTOR'S EXPENSE.
10. ALL WALL-BOX SWITCHES AND DIMMER DEVICES TO BE CENTERED AT 42 INCHES A.F.F., UNLESS OTHERWISE SPECIFIED. VERIFY HEIGHT FOR DEVICES OVER COUNTERS AND IN BACKPLASHES.
11. ALL WALL-BOX DIMMERS SHALL BE LUTRON - DIVA SERIES, 600 OR 1000 WATT, COLOR TO BE DETERMINED. ELECTRICAL CONTRACTOR MUST USE MAGNETIC LOW VOLTAGE OR ELECTRONIC LOW VOLTAGE SERIES DIMMERS FOR ALL LOW-VOLTAGE FIXTURES. SIZE AND DERATE ALL DIMMERS ACCORDING TO MANUFACTURER'S SPECIFICATIONS.
12. ALL DEVICES (I.E. SWITCHES, RECEPTACLES, PHONE JACKS, TELEVISION JACKS, ETC.) TO BE DECORA STYLE. VERIFY COLOR WITH OWNER AND/OR INTERIOR DESIGNER.
13. ELECTRICAL CONTRACTOR SHALL ALLOW ONE (1) EVENING (4 HOUR MINIMUM) AND PROVIDE ALL NECESSARY LADDERS TO ASSIST LIGHTING DESIGNER DURING FINAL A.M AND FOCUS OF ALL ADJUSTABLE LIGHTING FIXTURES.
14. FOR SPECIFIC WIRING INFORMATION AND CIRCUITING REFER TO THE ELECTRICAL PLANS.
15. THE GENERAL CONTRACTOR AND THE ELECTRICAL CONTRACTOR ARE RESPONSIBLE FOR REVIEWING THE INFORMATION ON ALL OF THESE PLANS. IF THERE ARE ERRORS OR OMISSIONS OR QUESTIONS CONCERNING THESE PLANS PLEASE CALL CREATIVE DESIGNS IN LIGHTING FOR CLARIFICATION.
16. REFER TO LANDSCAPE PLANS FOR LOW VOLTAGE LANDSCAPE LIGHTING FIXTURE LOCATIONS AND SPECIFICATIONS.

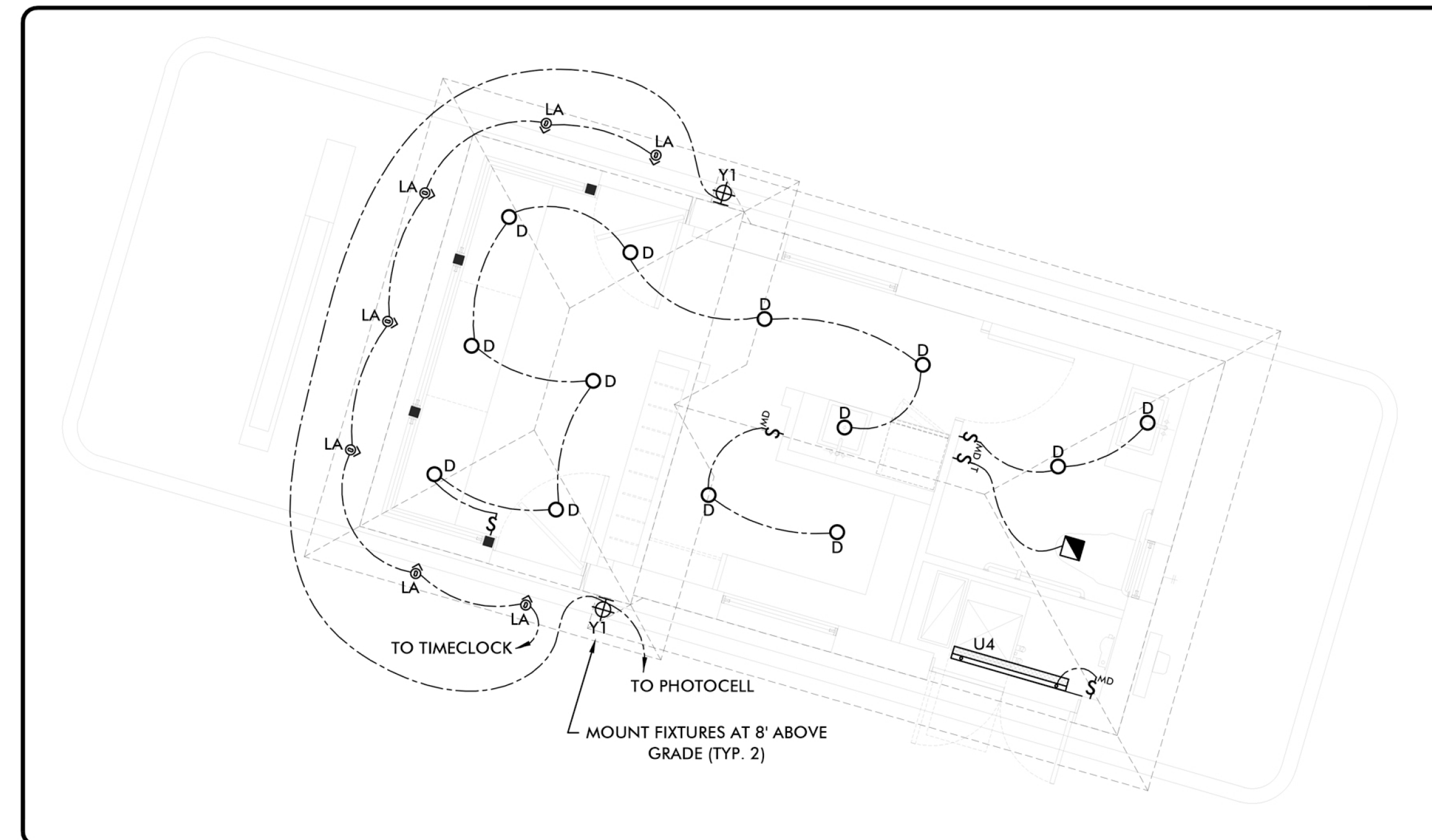
**MOUNTAIN SHADOWS EAST - GUARDHOUSE  
LIGHTING FIXTURE SCHEDULE**

Location	Qty	Type	Manufacturer	Description	Finish	Watts	Volts	Lumens	Lamp
Exterior	7	BL	CREE	PWY-5M-P3-02-D-UL-BZ-350-40K 36" full cutoff pathway light	Bronze	22 w	120-277v	1380	LED: 4000K INTEGRAL TO FIXTURE
Interior	13	D	HALO	H71CAT / 426 6" downlight with LED lamp and downlight cone with paintable trim ring	White	13 w	120 v	700	GreenCreative #13BR30G3DIM/927
Exterior	7	LA	HALO / SORAA	H1499ICAT [H1499TAT=non-ic] /142OP adjustable recessed fixture with 4" slot trim and LED lamp with 60 degree flood lens	White (Paintable)	8 w	120 v	390	#SM16-07-10D-927-03 and AC-GC-6060-00 lens
Interior	1	U4	METALUX	CL-132-120V-EBB1 4' fluorescent undercabinet task fixture with electronic ballast	White	32 w	120 v	---	F32T8/SP30/ECO [GE #26666]
Exterior	2	Y1	LUMARK	XTOR2A-N Wall-mounted full-cutoff flood light <mount fixture at highest point on structure for maximum illumination of guard gate>	Bronze	20 w	120 v	1432	LED: 3500K INTEGRAL TO FIXTURE
Exterior	6	Y2	AAL	E53-CF1-DBZ-SMB (luminaire selection to be confirmed by architect) Decorative wall mounted full cutoff exterior sconce	Dark Bronze	26 w	120-277v	1800	F26TBX/827A/ECO

- NOTES:**
- Electrical Contractor to determine fixture housing rating (IC, Non-IC or Remodel) unless otherwise noted.
  - LED specifications provided for bidding purposes only. Electrical Contractor shall contact Creative Designs in Lighting for updated LED specifications prior to order.
  - No substitutions permitted without prior approval from Creative Designs in Lighting.

LIGHTING PLAN SYMBOL LEGEND					
⊖	SINGLE POLE SWITCH	⊕	CEILING MOUNTED JUNCTION BOX	⊕	DUPLEX RECEPTACLE
⊖	3-WAY SWITCH	⊖	WALL MOUNTED JUNCTION BOX	⊕	1/2 HOT DUPLEX RECEPTACLE
⊖	4-WAY SWITCH	⊖	TRANSFORMER - SEE TRANSFORMER SCHEDULE	⊕	WEATHER PROOF GFCI DUPLEX RECEPTACLE
⊖	SINGLE POLE JAMB SWITCH	⊖	LED DRIVER - SEE DRIVER SCHEDULE	⊕	CEILING MOUNTED EXHAUST FAN
⊖	SINGLE POLE MOTION SWITCH	⊖	SINGLE POLE DIMMER	⊕	WALL MOUNTED EXHAUST FAN
⊖	SWITCH WITH WATERPROOF COVER	⊖	3-WAY DIMMER	⊕	ELECTRIC FIREPLACE IGNITOR
⊖	SINGLE POLE FAN SWITCH	⊖	KEYNOTE BUBBLE	⊕	DIMMING INTERFACE
⊖	SINGLE POLE TIMER SWITCH	⊖		⊕	CEILING MOUNTED MOTION DETECTOR

NOTE: SOME SYMBOLS ON THIS LEGEND MAY NOT BE USED ON THIS PROJECT.



**1 GUARD HOUSE LIGHTING PLAN**  
Scale: 1/4" = 1'0"



**CREATIVE DESIGNS  
IN LIGHTING**

1900 E. Indian School Road  
Phoenix, Arizona 85016

602.248.7822  
design@cdltg.com  
www.cdltg.com

1978 **37** 2015  
years of architectural  
lighting design

**ENTRANCE AND GUARD HOUSE**  
MOUNTAIN SHADOWS EAST, PARADISE VALLEY, AZ

REVISIONS		
△	2015.02.23 CITY COMMENTS	ZJH
△	2015.08.20 PV COMMENTS	ZJH
△	.	.
△	.	.
△	.	.
△	.	.

DATE	1.22.15
SCALE	AS SHOWN
PROJECT NUMBER	103061-15
DRAWN BY	ZJH
CHECKED BY	NH

SHEET NAME  
**LIGHTING PLAN  
AND NOTES**

SHEET NUMBER

**AL1**

This drawing is an instrument of service and the property of Creative Designs in Lighting and shall remain their property. The use of this drawing shall be restricted to the original site for which it was prepared and publication thereof is expressly prohibited. No part of this drawing may be reproduced or transmitted in any form or by any means, electronic, mechanical, photocopying, recording, or by any information storage and retrieval system, without the written consent of Creative Designs in Lighting.