



# VICINITY MAP

Subject Property



"The Villas at Mountain Shadows – Amended"

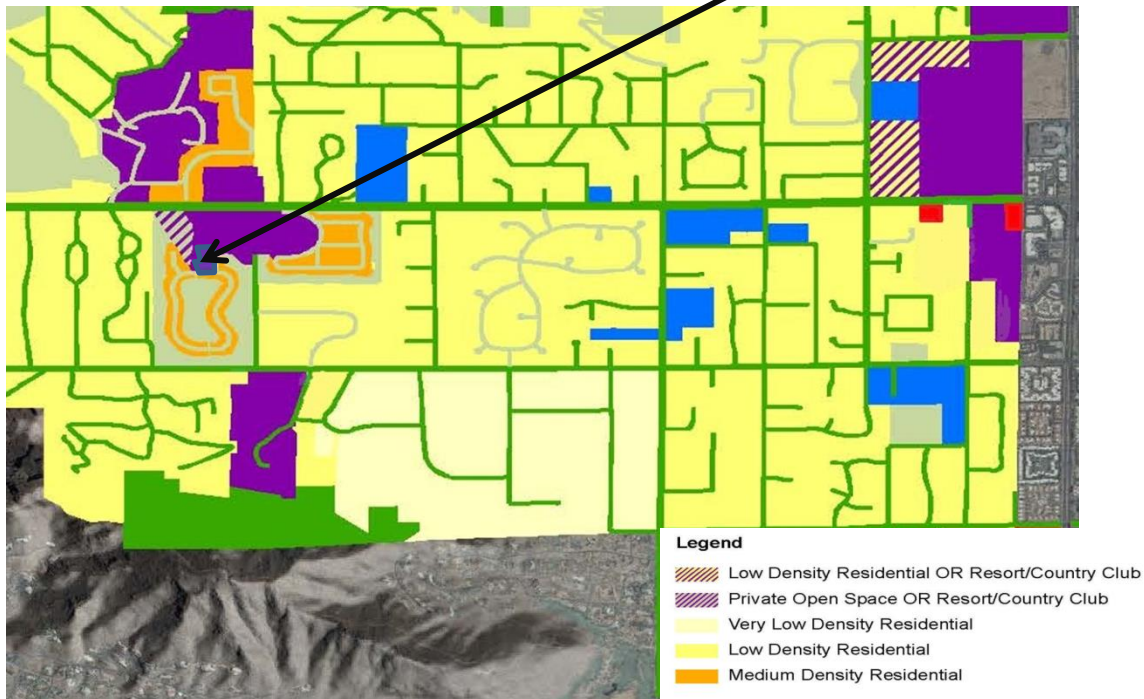
Re-Plat (RP 16-01)

Southwest Corner Lincoln Drive and 56<sup>th</sup> Street (Assessor No. 169-30-103)



# GENERAL PLAN

Subject Property



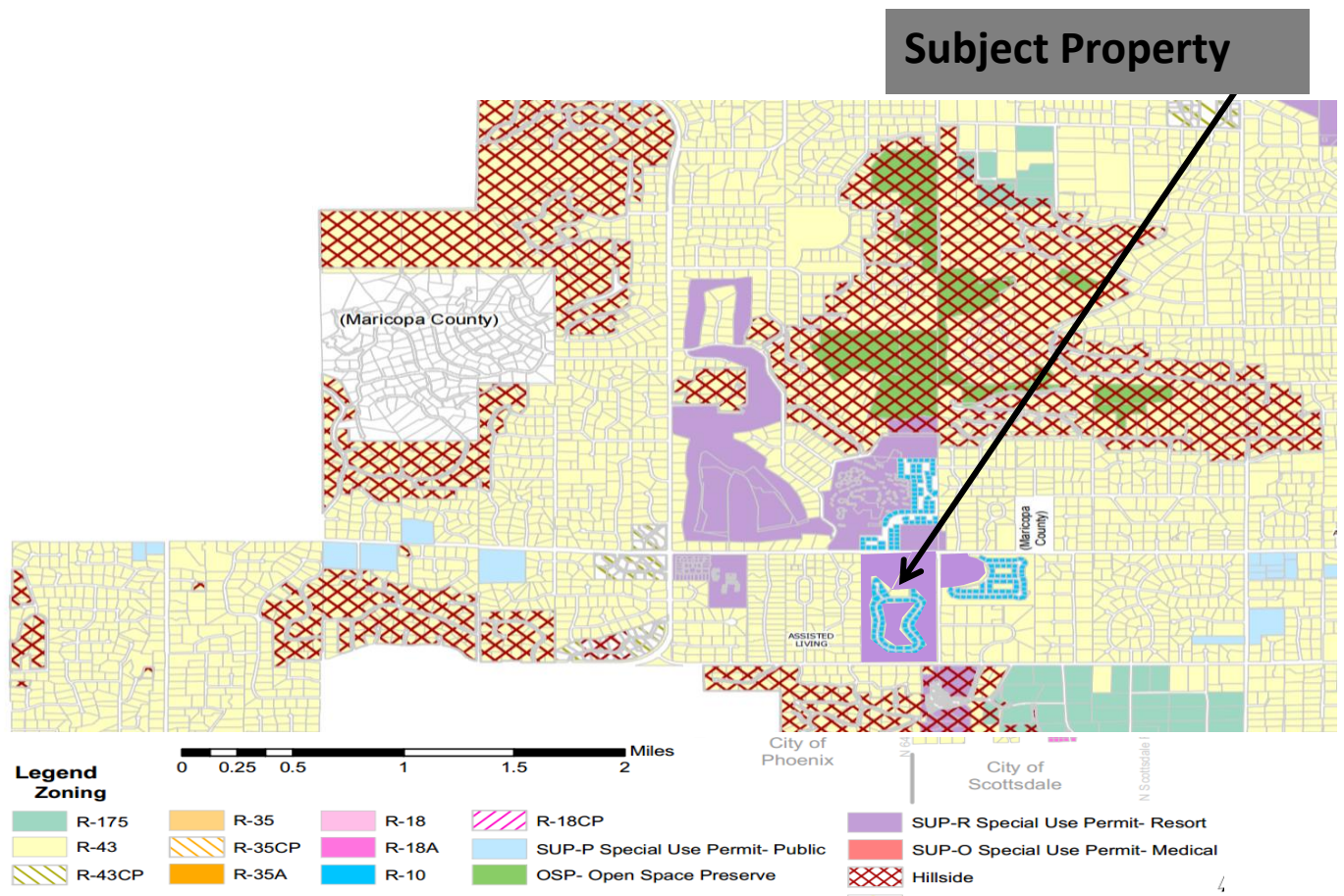
"The Villas at Mountain Shadows – Amended"

Re-Plat (RP 16-01)

Southwest Corner Lincoln Drive and 56<sup>th</sup> Street (Assessor No. 169-30-103)



# ZONING MAP



3.08 acres of 67-acres

“The Villas at Mountain Shadows – Amended”

Re-Plat (RP 16-01)

Southwest Corner Lincoln Drive and 56<sup>th</sup> Street (Assessor No. 169-30-103)