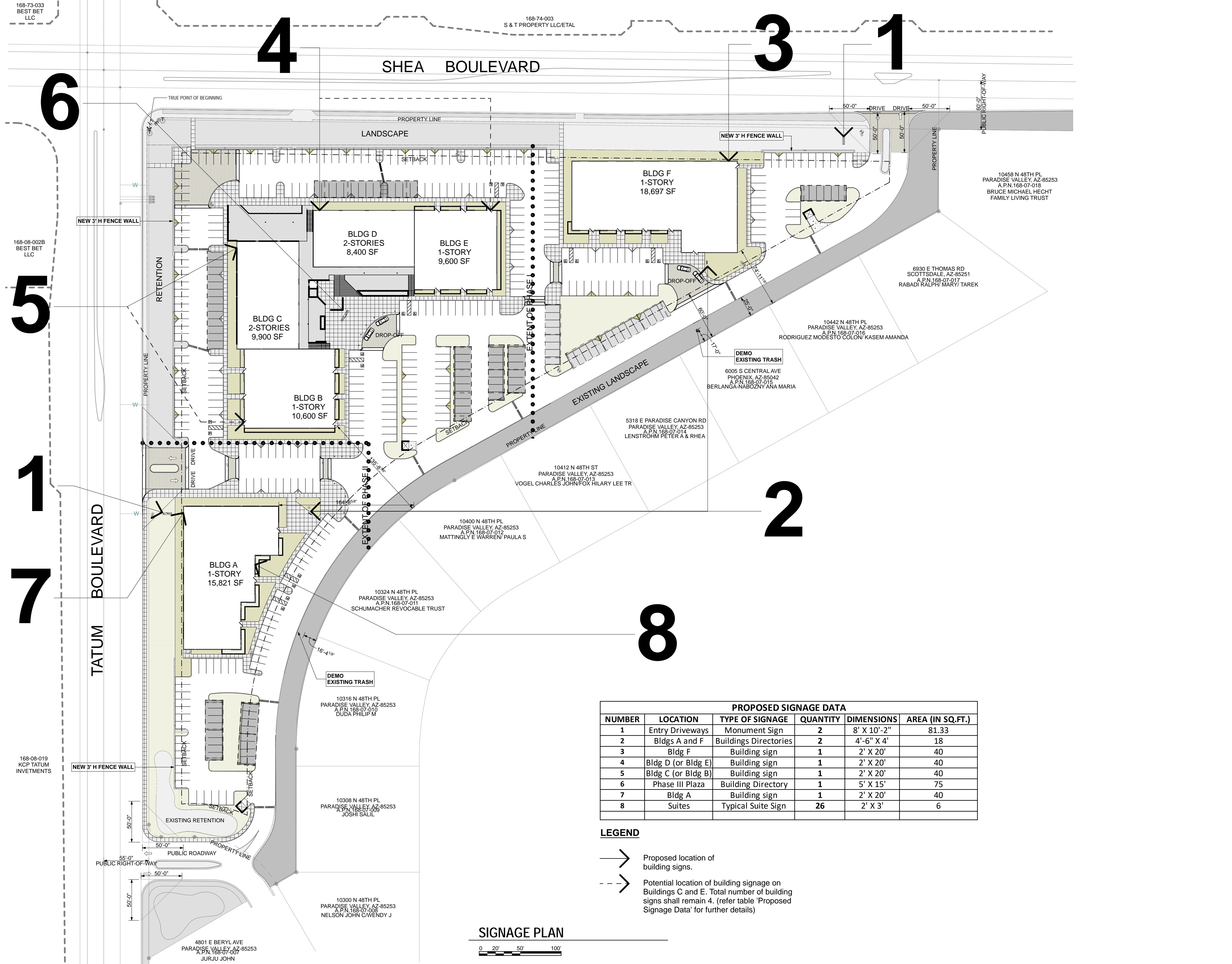


Orcutt|Winslow Project 2018_041 Mountain View Medical Center Redevelopment, Signage Details Sheet 05.3.1, signage plan was plotted by Bhoomi Desai on Monday, February 11, 2019 at 4:20 PM. File found at BIM Server: HC Bimserver - BIMcloud Basic for ARCHICAD 21/Health Care Studio/18_041-01MinVewMedicalCtrRedevlpmt



PROPOSED SIGNAGE DATA					
NUMBER	LOCATION	TYPE OF SIGNAGE	QUANTITY	DIMENSIONS	AREA (IN SQ.FT.)
1	Entry Driveways	Monument Sign	2	8' X 10'-2"	81.33
2	Bldgs A and F	Buildings Directories	2	4'-6" X 4'	18
3	Bldg F	Building sign	1	2' X 20'	40
4	Bldg D (or Bldg E)	Building sign	1	2' X 20'	40
5	Bldg C (or Bldg B)	Building sign	1	2' X 20'	40
6	Phase III Plaza	Building Directory	1	5' X 15'	75
7	Bldg A	Building sign	1	2' X 20'	40
8	Suites	Typical Suite Sign	26	2' X 3'	6

- LEGEND**
- Proposed location of building signs.
 - - - → Potential location of building signage on Buildings C and E. Total number of building signs shall remain 4. (refer table 'Proposed Signage Data' for further details)

SIGNAGE PLAN

0 20' 50' 100'

arcutt | winslow

2929 n central ave
eleventh floor
phoenix arizona 85012

602.257.1764 t
602.257.9029 f

www.owp.com

© 2017 this (hard copy or electronic) drawing is an instrument of service and the property of the Arcutt|Winslow Partnership and shall remain their property. The design professional shall not be responsible for any alterations, modifications or additions made to this drawing by any party other than the design professional. Use of this drawing shall be limited to the original use for which it was prepared and publication thereof is expressly limited to such use. In use or reproduction, unless otherwise agreed in writing, the design professional reserves all copyright or other proprietary interest in this drawing, and it may not be used for any other purpose without the design professional's written consent. Publication by any method in whole or part is prohibited without the written permission of the design professional. Any information obtained or conclusions derived from this drawing shall be at the user's sole risk.

mountain view medical center, LLC
Mountain View Medical Center Redevelopment
10555, 10565, 10575, 10585, 10595, 10599 N. Tatum Blvd., Paradise Valley, Arizona 85253

CLIENT CONTACT

mountain view medical center, LLC
2944 N. 44th St.
Phoenix, AZ 85018

602.802.8106 t

PROJECT NO. 2018_041
DATE OF ISSUE 02.07.2019

REVISION NO.

1	09.26.2018
2	11.01.2018
3	01.22.2019
4	02.19.2019

PROJECT TEAM John Cantrell
DRAWN BY BD

PROJECT PHASE SUP major amendment
Review #4
SHEET CONTENTS signage plan

SHEET NO. 05.3.1

© 2017 the third copy or electronic drawing is an instrument of service and the property of the Orcutt|Winslow Partnership and shall remain their property. The design professional shall not be responsible for any alterations, modifications or additions made to this drawing by any party other than the design professional. Use of this drawing shall be limited to the original use for which it was prepared and publication thereof is expressly limited to such use. In use or reproduction, unless otherwise agreed in writing, design professional reserves all copyright or other proprietary interest in this drawing, and it may not be used for any other purpose without the design professional's written consent. Publication by any method in whole or part is prohibited without the written permission of the design professional. Any information obtained or conclusions derived from this drawing shall be at the user's sole risk.

mountain view medical center, LLC
Mountain View Medical Center Redevelopment
10555, 10565, 10575, 10585, 10595, 10599 N. Tatum Blvd., Paradise Valley, Arizona 85253

CLIENT CONTACT
mountain view medical center, LLC
2944 N. 44th St.
Phoenix, AZ 85018
602.802.8106 t

PROJECT NO.	DATE OF ISSUE
2018_041	02.07.2019
REVISION NO.	DATE
1	09.26.2018
2	11.01.2018
3	01.22.2019
4	02.19.2019

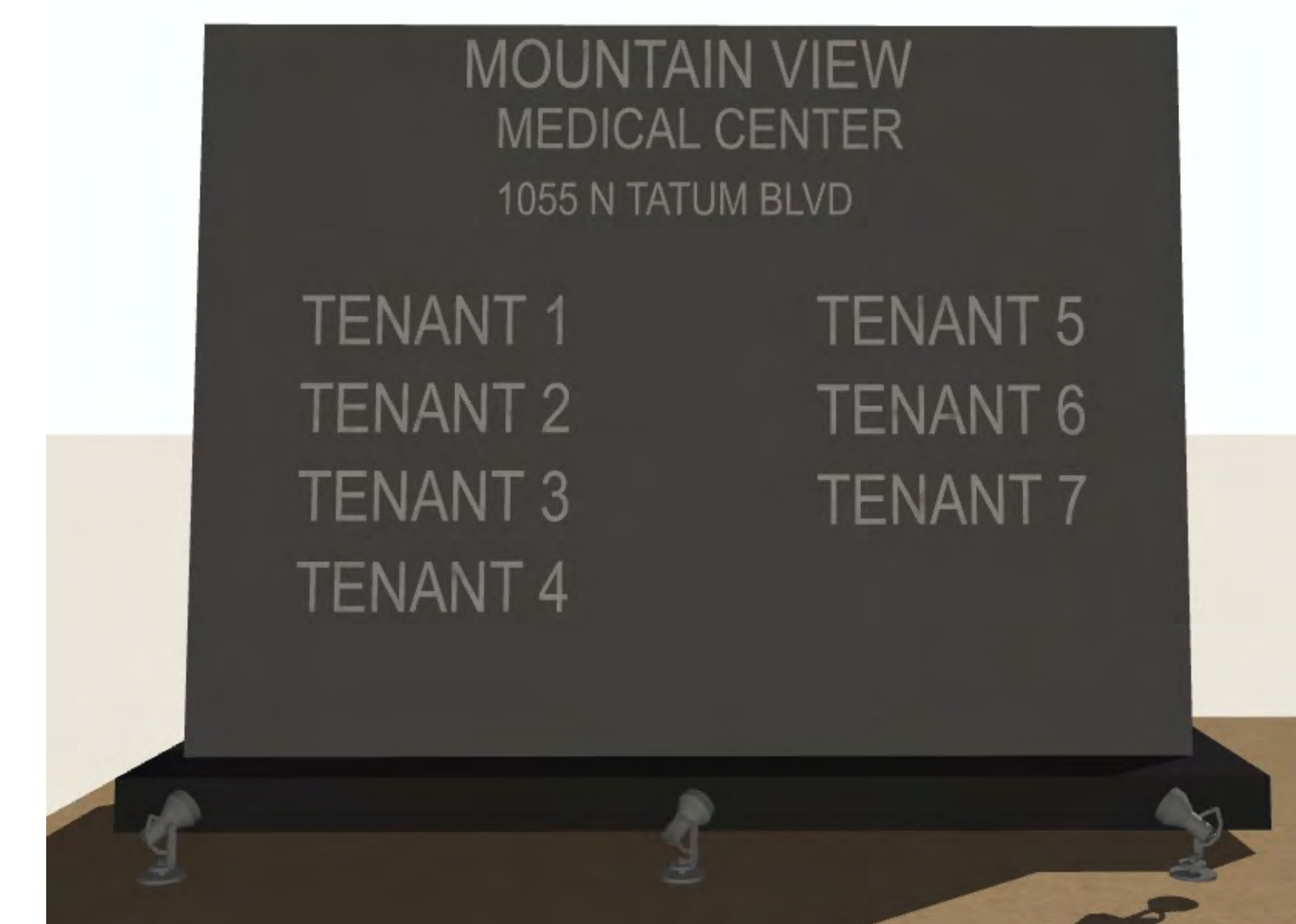
PROJECT TEAM
John Cantrell BD

PROJECT PHASE
SUP major amendment
Review #4
SHEET CONTENTS
phase I signage plan

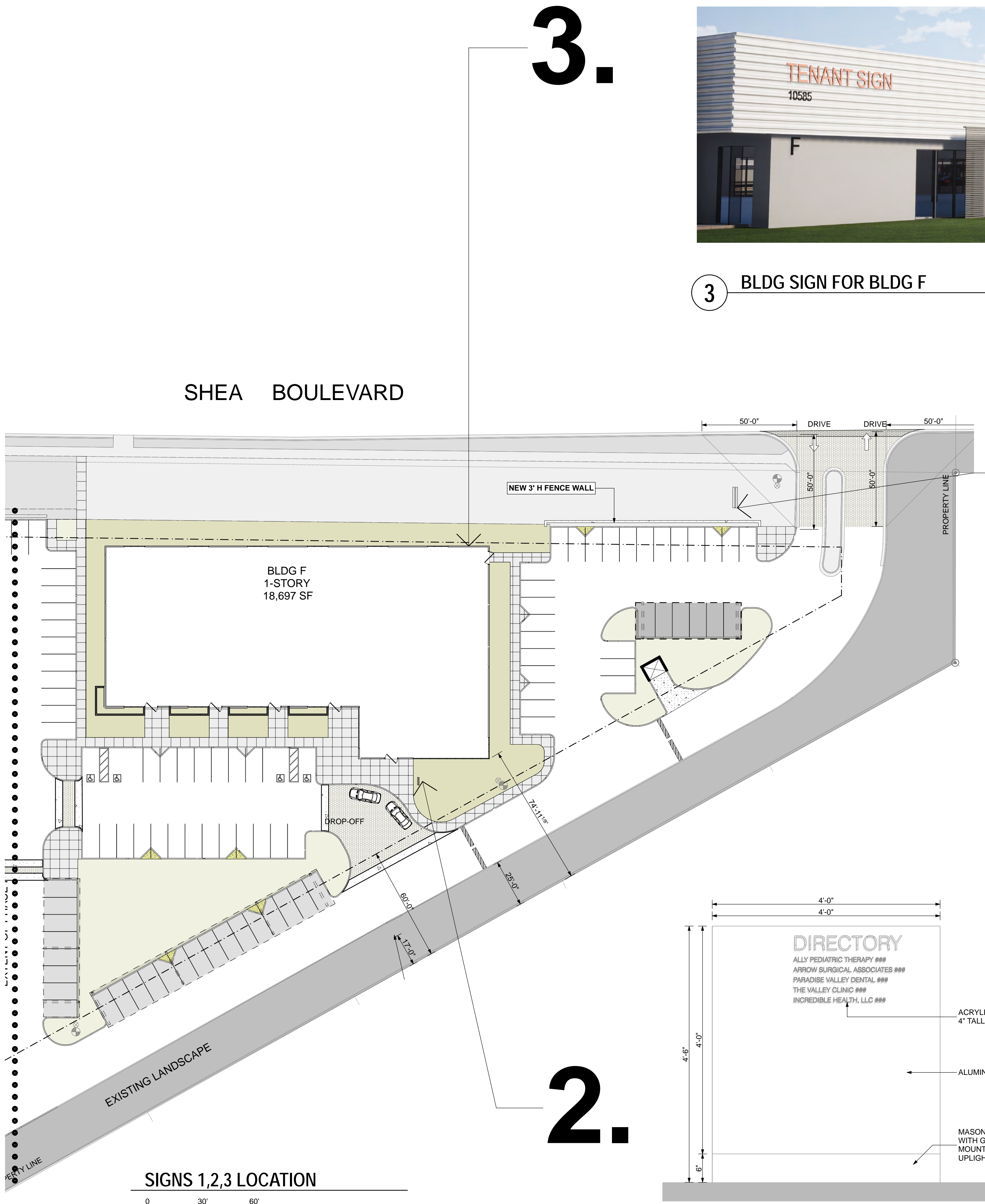
SHEET NO.
05.3.2



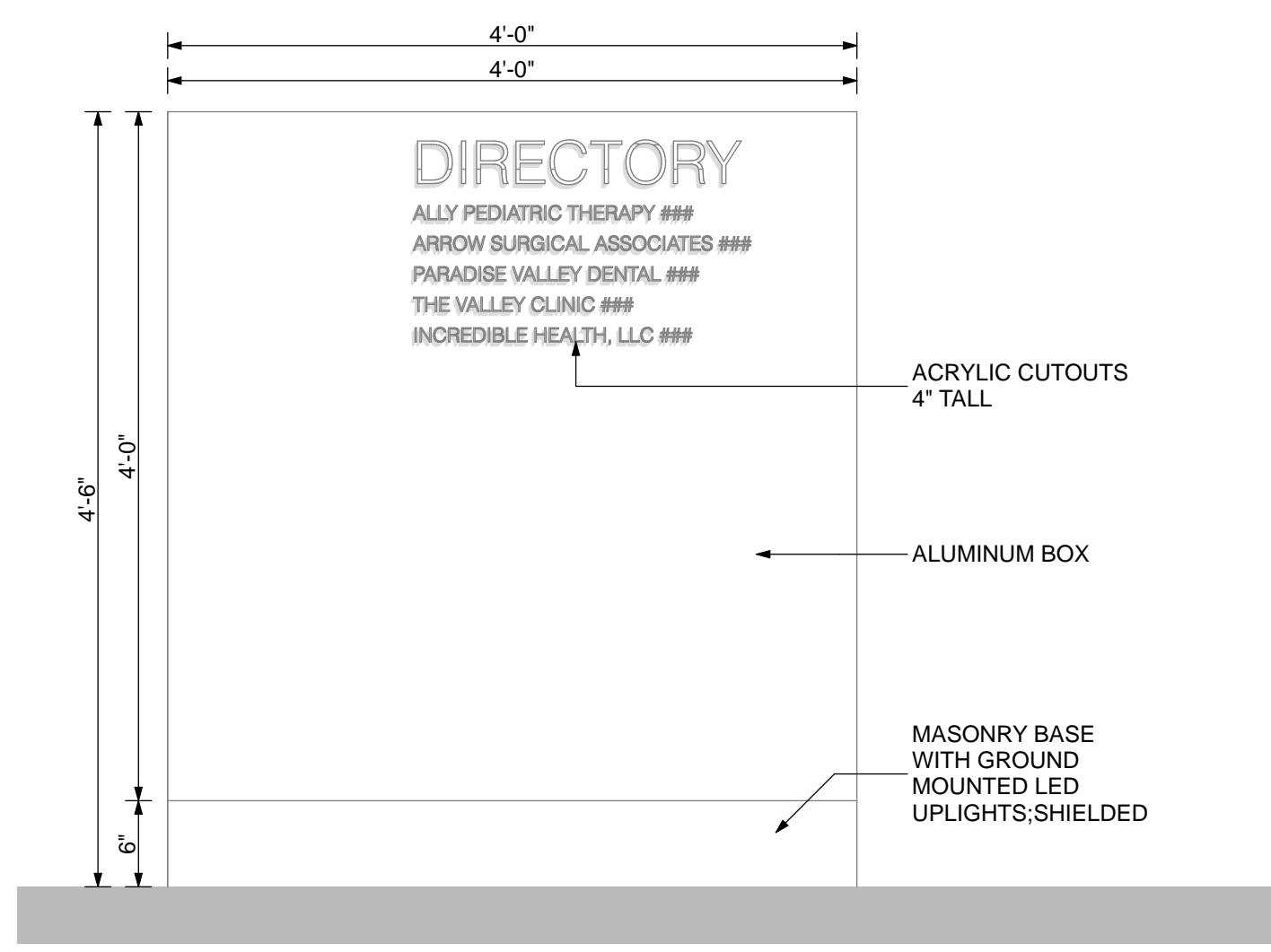
3 BLDG SIGN FOR BLDG F



1 MONUMENT SIGN (design to change, not the size)



SIGNS 1,2,3 LOCATION
0 30 60



2 DIRECTORY FOR BLDG F



1.

3.

2.



4 BLDG SIGN ON BLDG D



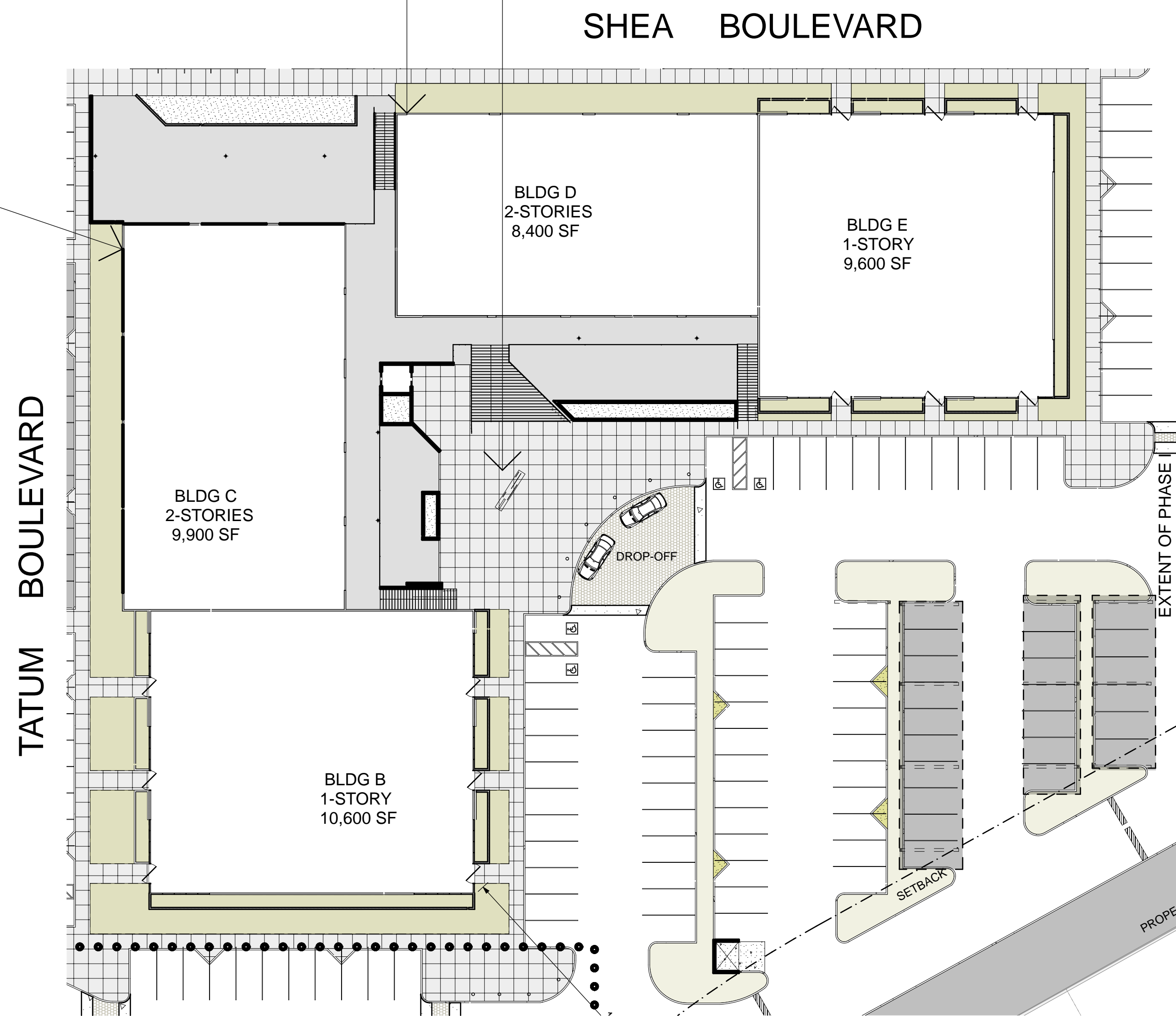
6 BLDGS B,C,D,E DIRECTORY



5 BLDG SIGN ON BLDG C

5.

4. 6.



SIGNS 4,5,6 LOCATION

© 2017 this third copy or electronic drawing is an instrument of service and the property of the Arcutt|Winslow Partnership and shall remain their property. The design professional shall not be responsible for any alterations, modifications or additions made to this drawing by any party other than the design professional. Use of this drawing shall be limited to the original use for which it was prepared and publication thereof is expressly limited to such use, in whole or in part, without the written consent of the design professional. The design professional reserves all copyright or other proprietary interest in this drawing, and it may not be used for any other purpose without the design professional's written consent. Publication by any method in whole or in part is prohibited without the written permission of the design professional. Any information obtained or conclusions derived from this drawing shall be at the user's sole risk.

mountain view medical center, LLC
Mountain View Medical Center Redevelopment
 10555, 10565, 10575, 10585, 10595, 10599 N. Tatum Blvd., Paradise Valley, Arizona 85253

CLIENT CONTACT
 mountain view medical center, LLC
 2944 N. 44th St.
 Phoenix, AZ 85018
 602.802.8106 t

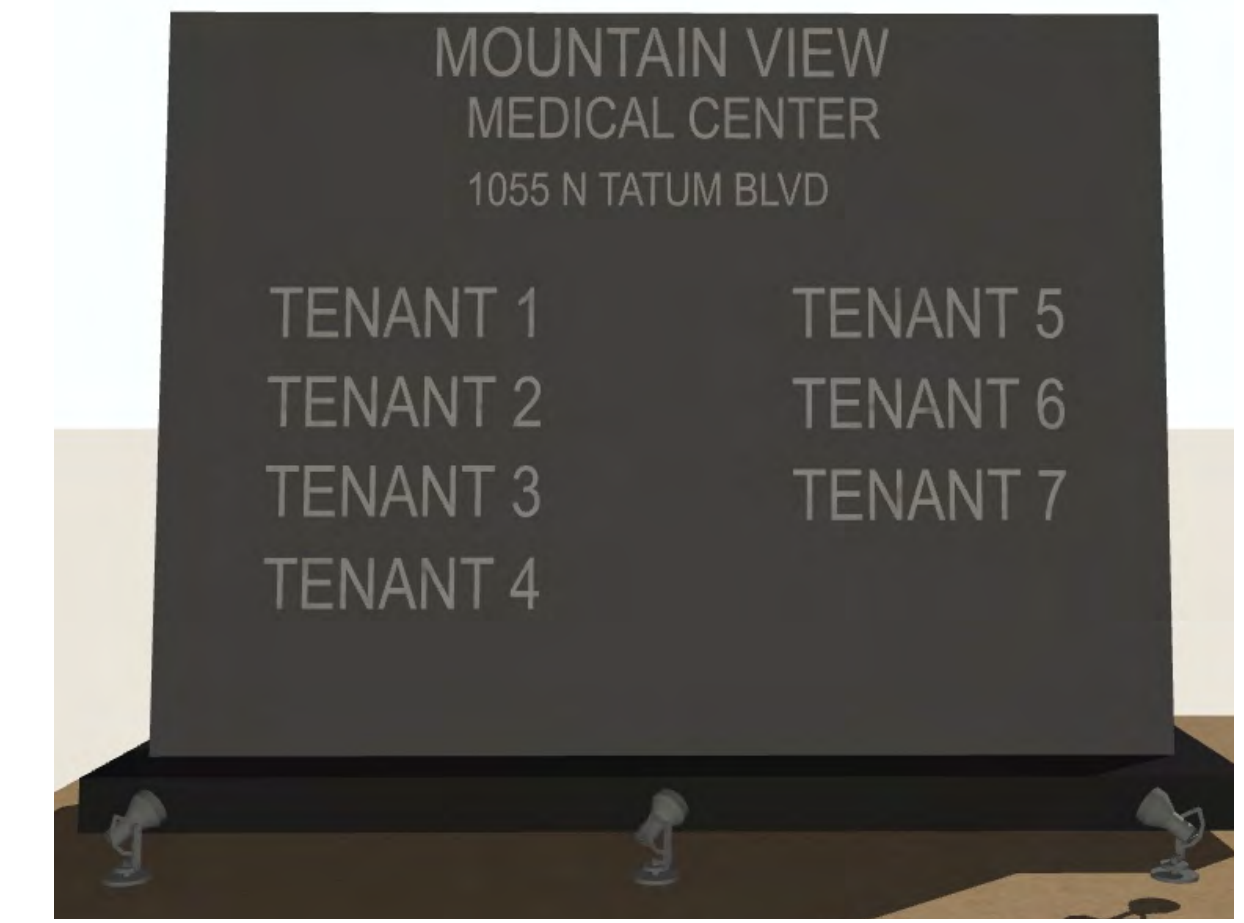
PROJECT NO.	DATE OF ISSUE
2018_041	02.07.2019
REVISION NO.	DATE
1	09.26.2018
2	11.01.2018
3	01.22.2019
4	02.19.2019

PROJECT TEAM
 John Cantrell BD

PROJECT PHASE
 SUP major amendment
 Review #4
 SHEET CONTENTS
 phase II signage plan

SHEET NO.
05.3.3

1.

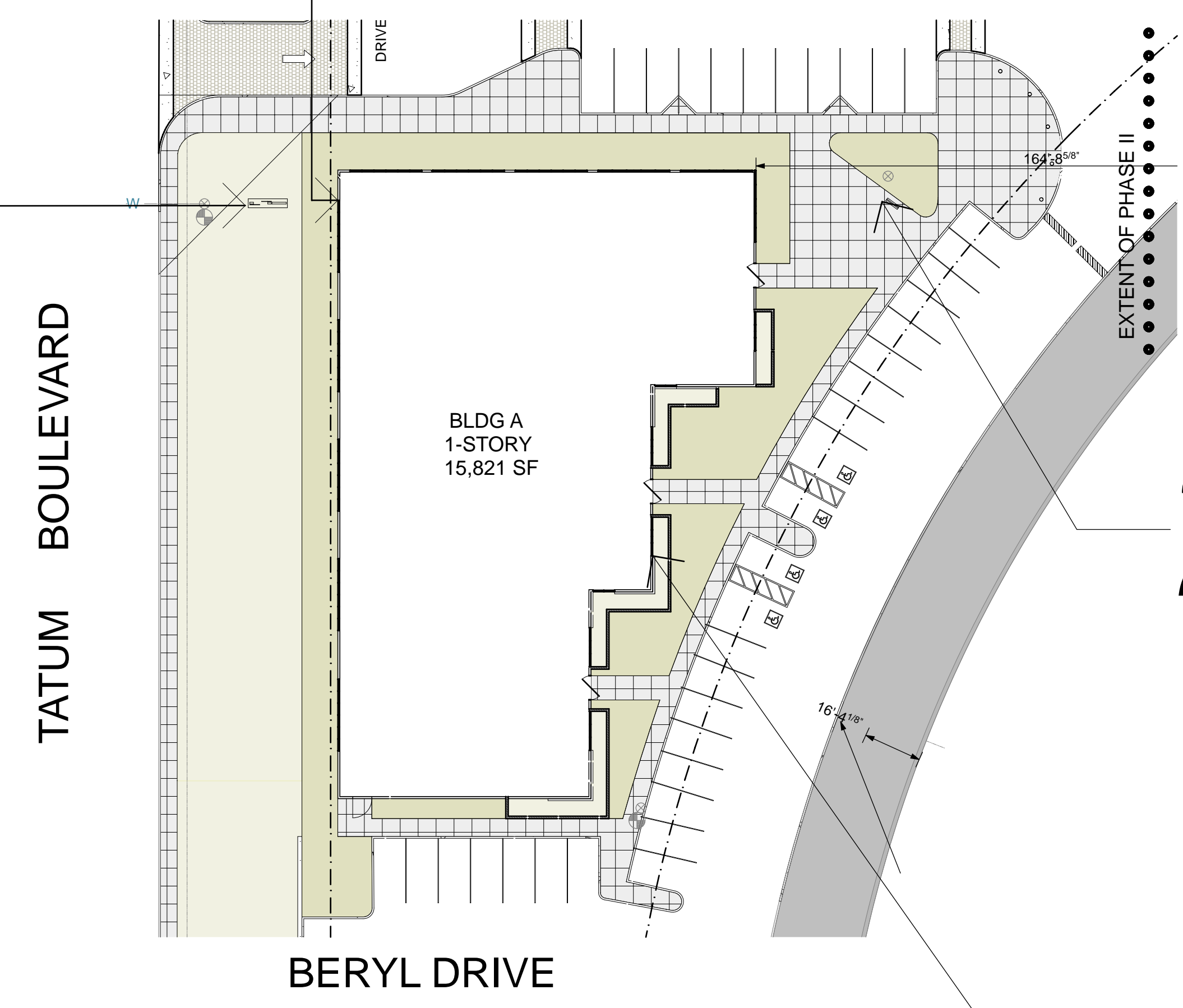


1 MONUMENT SIGN (design to change, not the size)

7.

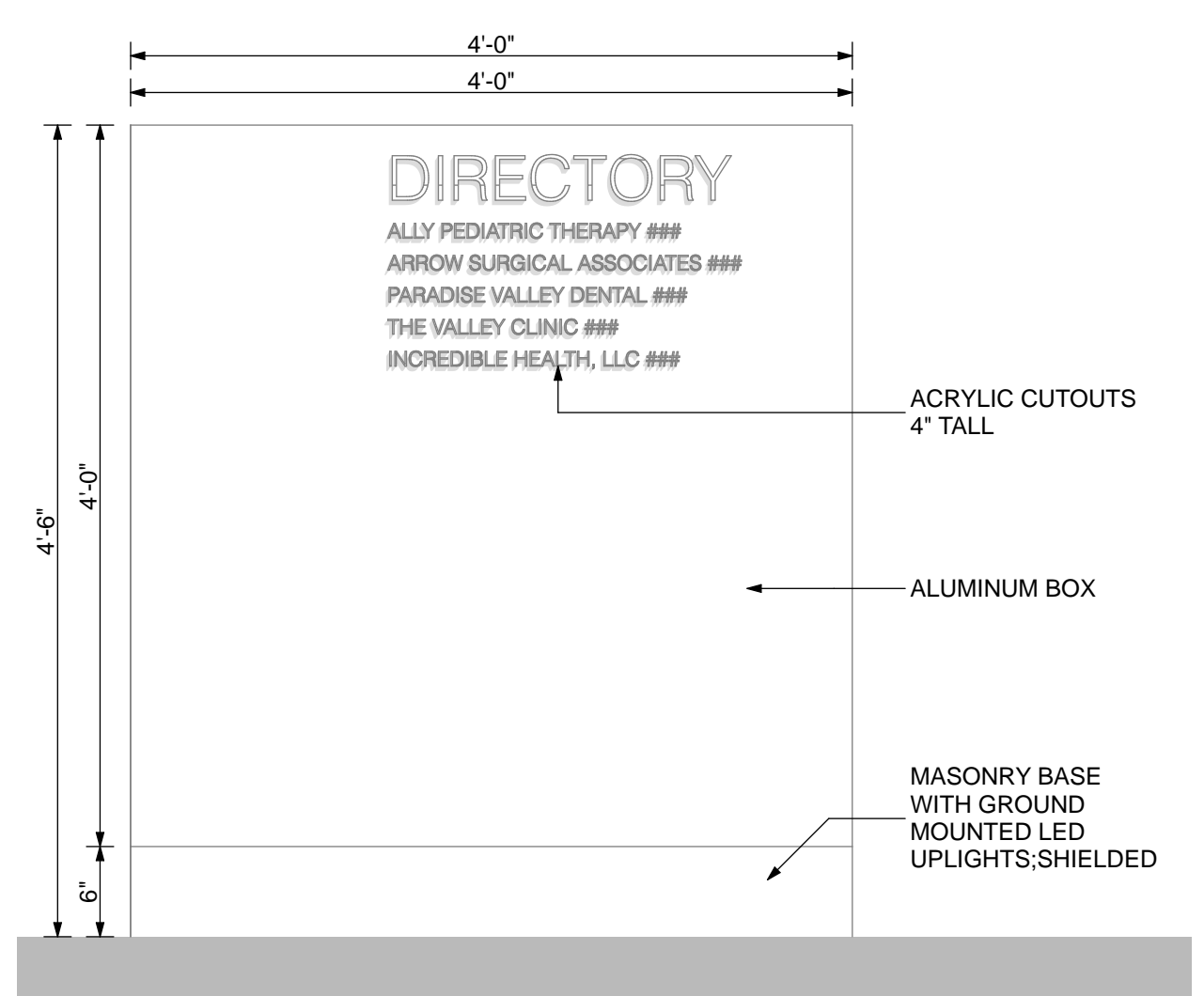


7 BLDG SIGN ON BLDG A



SIGNS 1,2,7,8 LOCATION

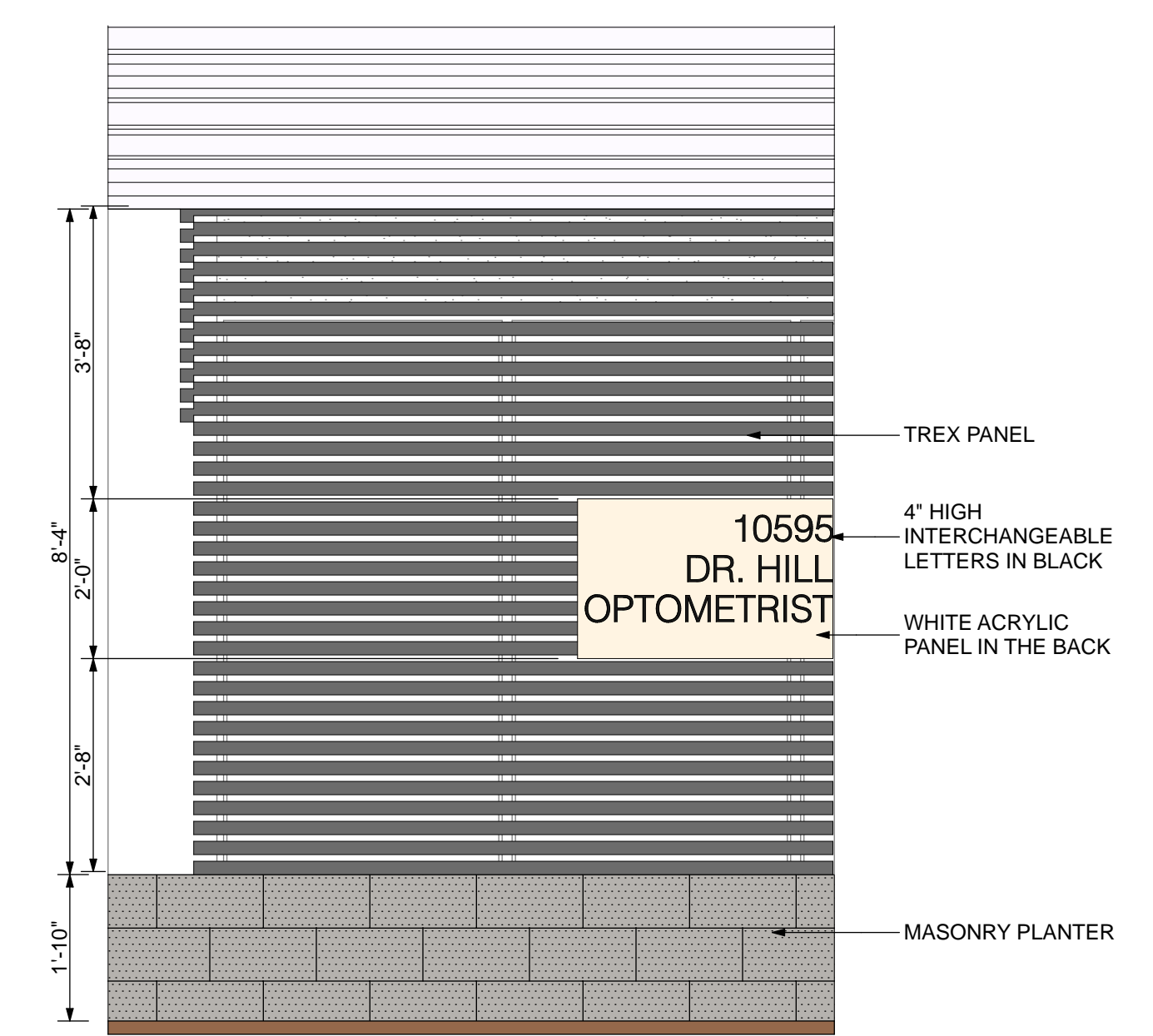
2.



2 DIRECTORY FOR BLDG A



8.



8 TYP. SUITE SIGNAGE

© 2017 this third copy or electronic drawing is an instrument of service and the property of the Orcutt|Winslow Partnership and shall remain their property. The design professional shall not be responsible for any alterations, modifications or additions made to this drawing by any party other than the design professional. Use of this drawing shall be limited to the original use for which it was prepared and publication thereof is expressly limited to such use in its original form. Unless otherwise agreed to in writing, the design professional reserves all copyright or other proprietary interest in this drawing, and it may not be used for any other purpose without the design professional's written consent. Publication by any method in whole or part is prohibited without the written permission of the design professional. Any information obtained or conclusions derived from this drawing shall be at the user's sole risk.

mountain view medical center, LLC
Mountain View Medical Center Redevelopment
 10555, 10565, 10575, 10585, 10595, 10599 N. Tatum Blvd., Paradise Valley, Arizona 85253

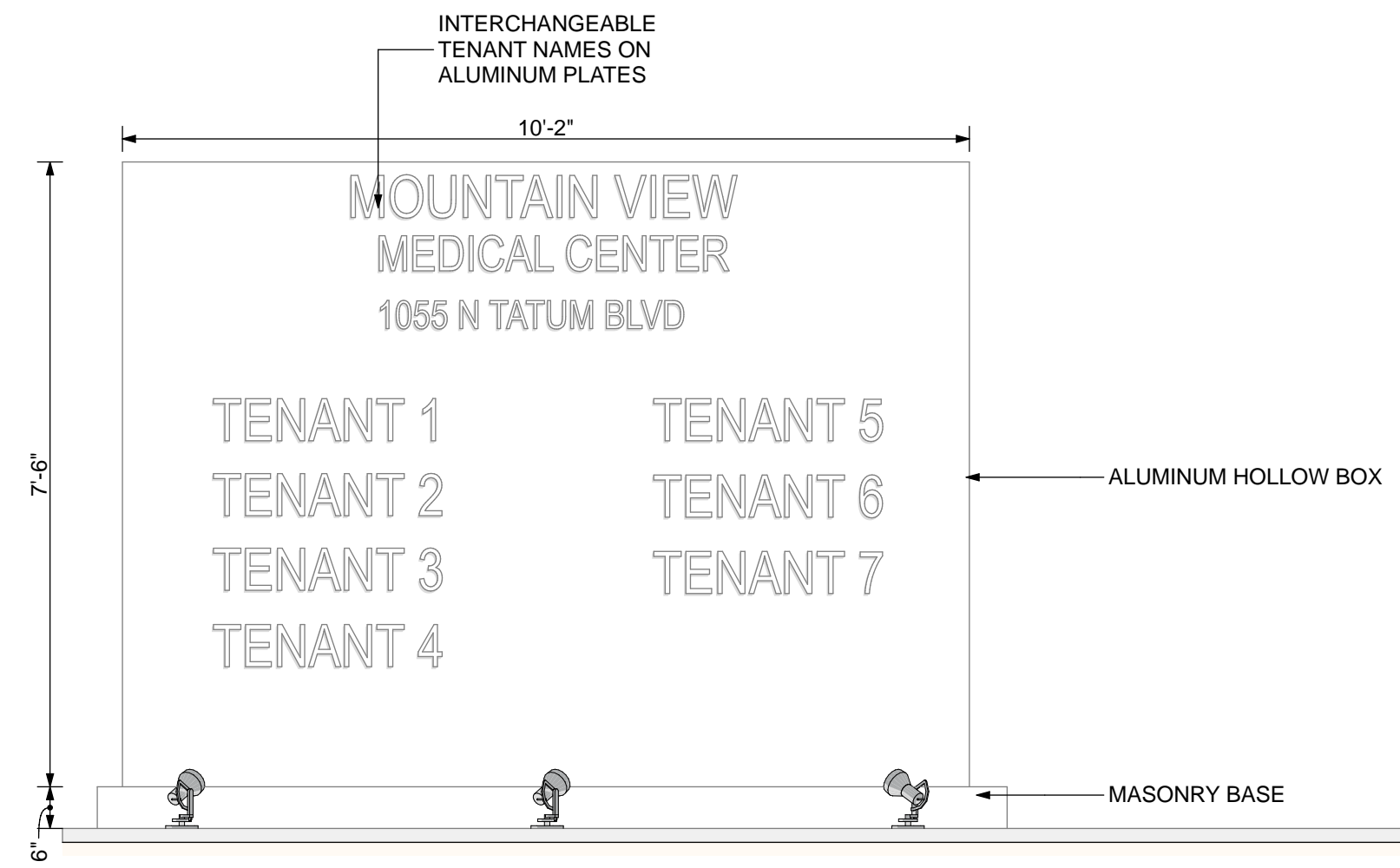
CLIENT CONTACT
 mountain view medical center, LLC
 2944 N. 44th St.
 Phoenix, AZ 85018
 602.802.8106 t

PROJECT NO.	DATE OF ISSUE
2018_041	02.07.2019
REVISION NO.	DATE
1	09.26.2018
2	11.01.2018
3	01.22.2019
4	02.19.2019

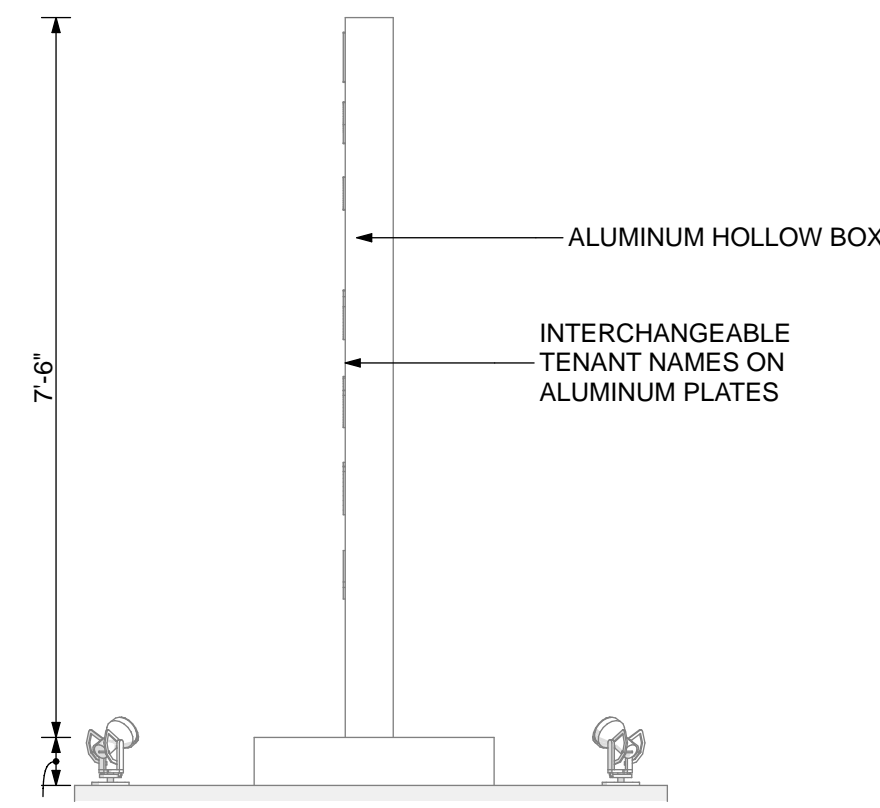
PROJECT TEAM
 John Cantrell BD

PROJECT PHASE
 SUP major amendment
 Review #4
phase III signage plan

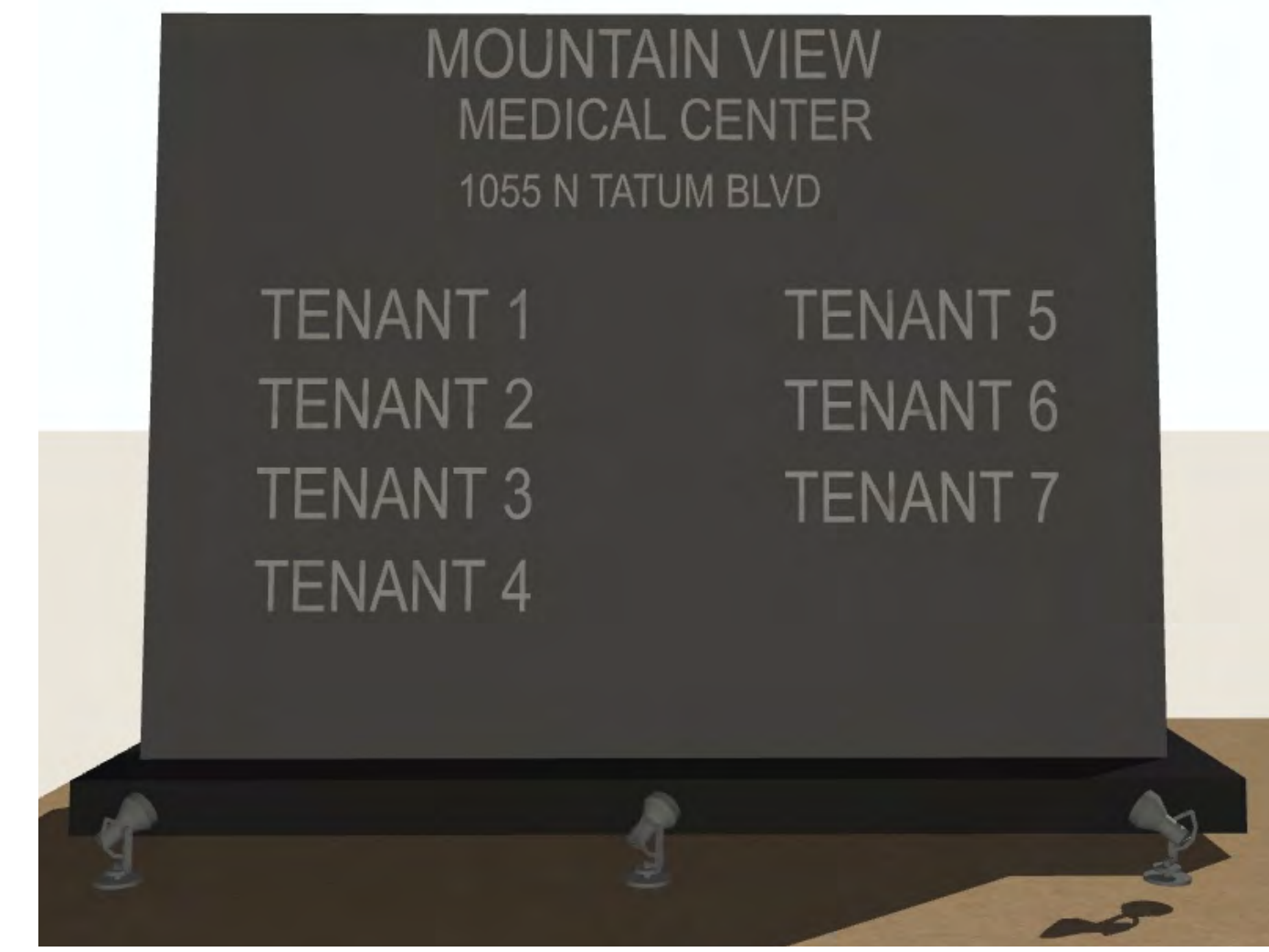
SHEET NO.
05.3.4



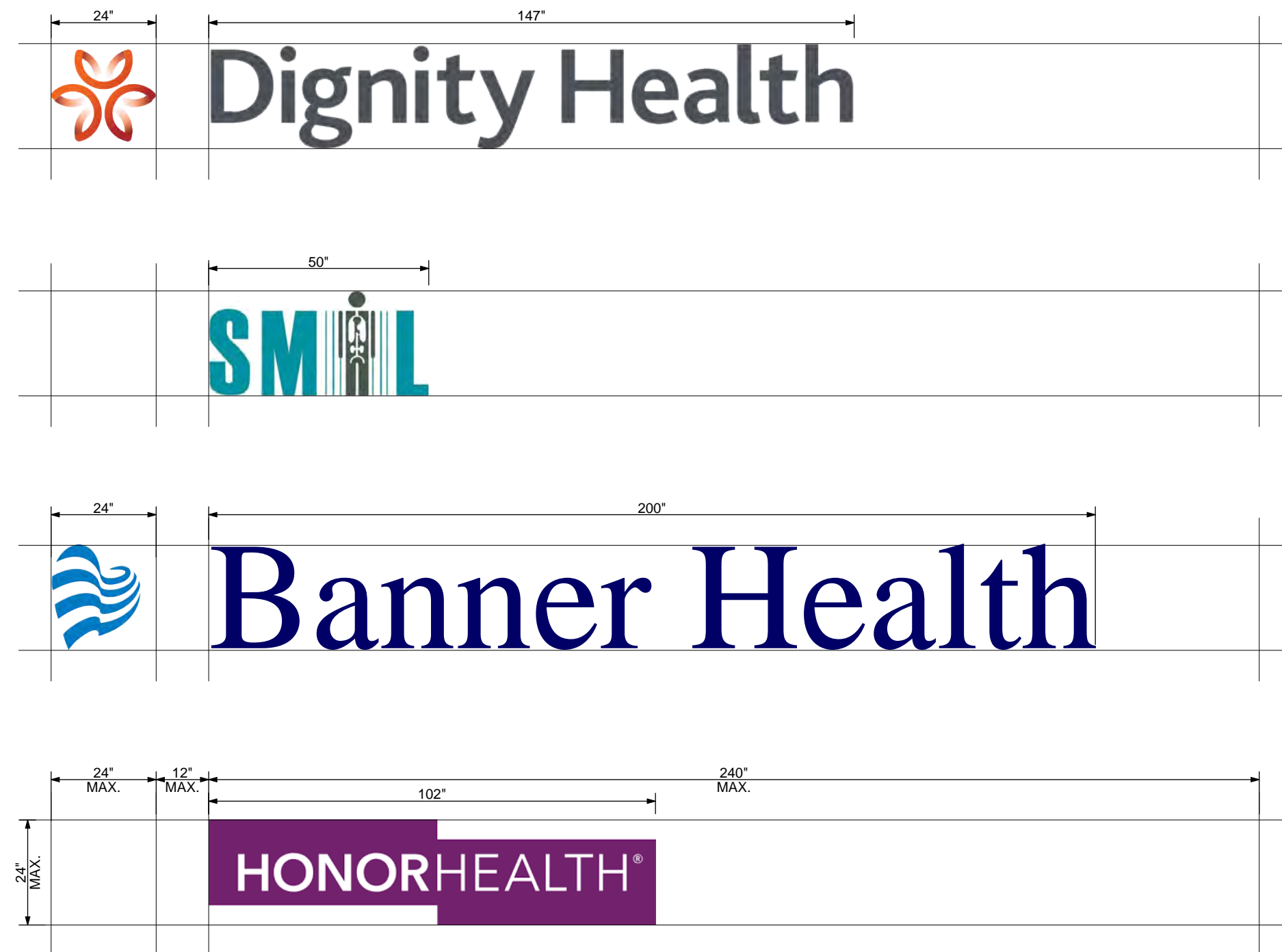
1 MONUMENT SIGN FRONT ELEVATION



1 MONUMENT SIGN SIDE ELEVATION

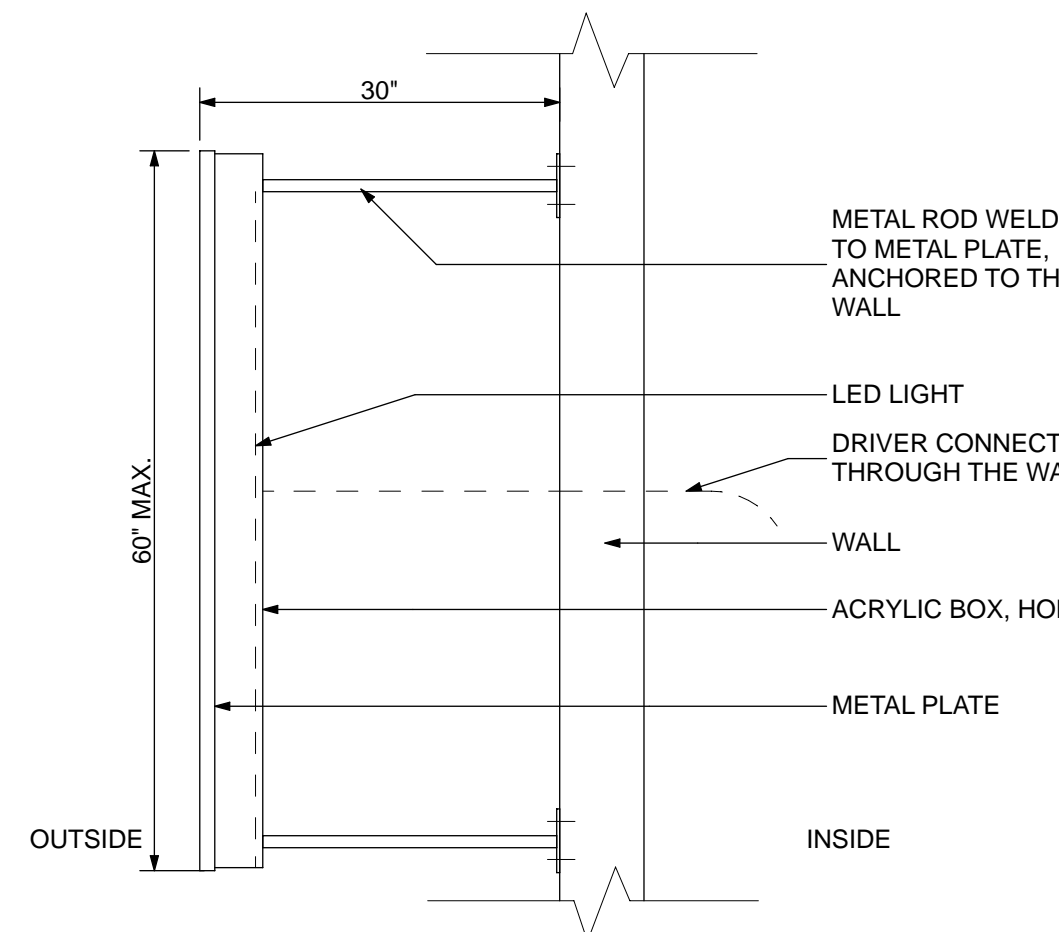


1 MONUMNET SIGN (design to change, not the size)



BLDG SIGNS 3,4,5,7 TYP. FRONT ELEVATION*

***EXAMPLES OF THE BUILDING SIGNS (NOTE: THE SIGNS AND LOGOS USED ARE ONLY FOR GRAPHIC PURPOSE)**



BLDG SIGNS 3,4,5,7 TYP. LIGHTING DETAIL



BLDG SIGNS 3,4,5,7



BLDG SIGNS 3,4,5,7

© 2017 this third copy or electronic drawing is an instrument of service and the property of the Orcutt|Winslow Partnership and shall remain their property. The design professional shall not be responsible for any alterations, modifications or additions made to this drawing by any party other than the design professional. Use of this drawing shall be limited to the original use for which it was prepared and publication thereof is expressly limited to such use, in case of reproduction. Unless otherwise agreed in writing, design professional reserves all copyright or other proprietary interest in this drawing, and it may not be used for any other purpose without the design professional's written consent. Publication by any method in whole or part is prohibited without the written permission of the design professional. Any information obtained or conclusions derived from this drawing shall be at the user's sole risk.

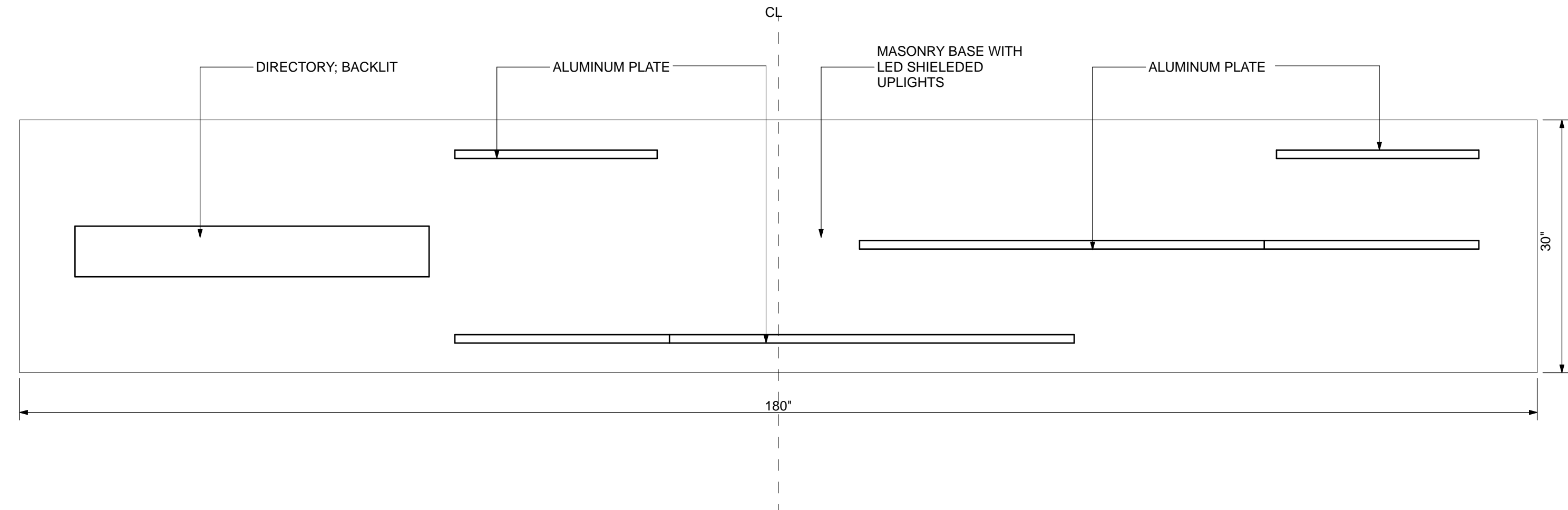
mountain view medical center, LLC
Mountain View Medical Center Redevelopment
 10555, 10565, 10575, 10585, 10595, 10599 N. Tatum Blvd., Paradise Valley, Arizona 85253

CLIENT CONTACT
 mountain view medical center, LLC
 2944 N. 44th St.
 Phoenix, AZ 85018

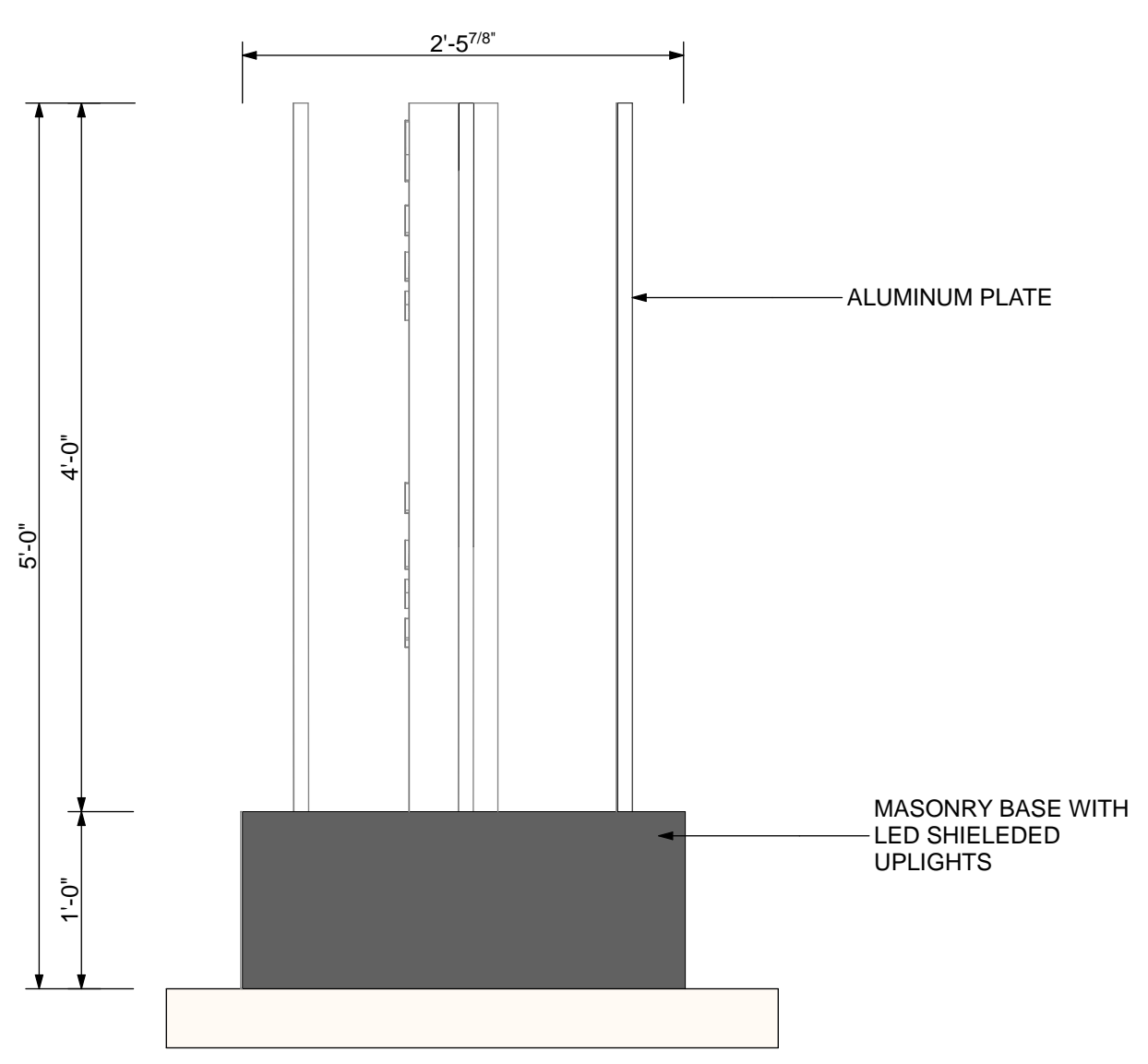
PROJECT NO.	DATE OF ISSUE
2018_041	02.07.2019
REVISION NO.	DATE
1	09.26.2018
2	11.01.2018
3	01.22.2019
4	02.19.2019

PROJECT TEAM DRAWN BY
 John Cantrell BD

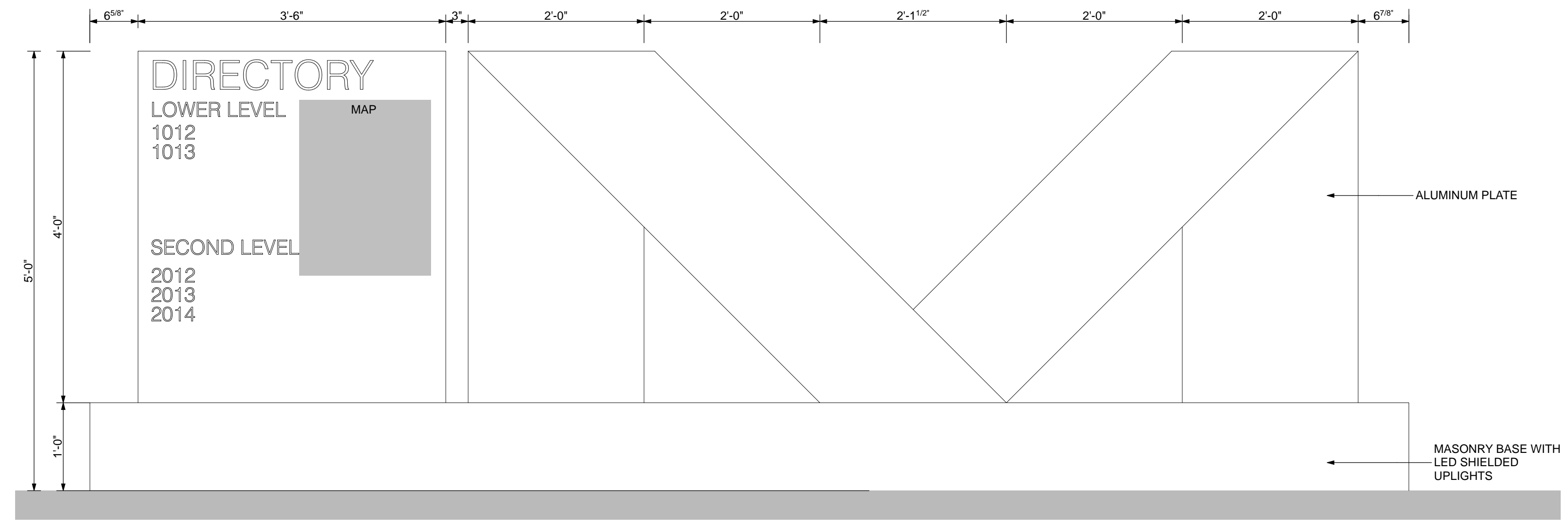
PROJECT PHASE
 SUP major amendment
 Review #4
SHEET CONTENTS
 bldg and monument sign



6 BLDGS B,C,D,E DIRECTORY PLAN
0 6" 1' 2'



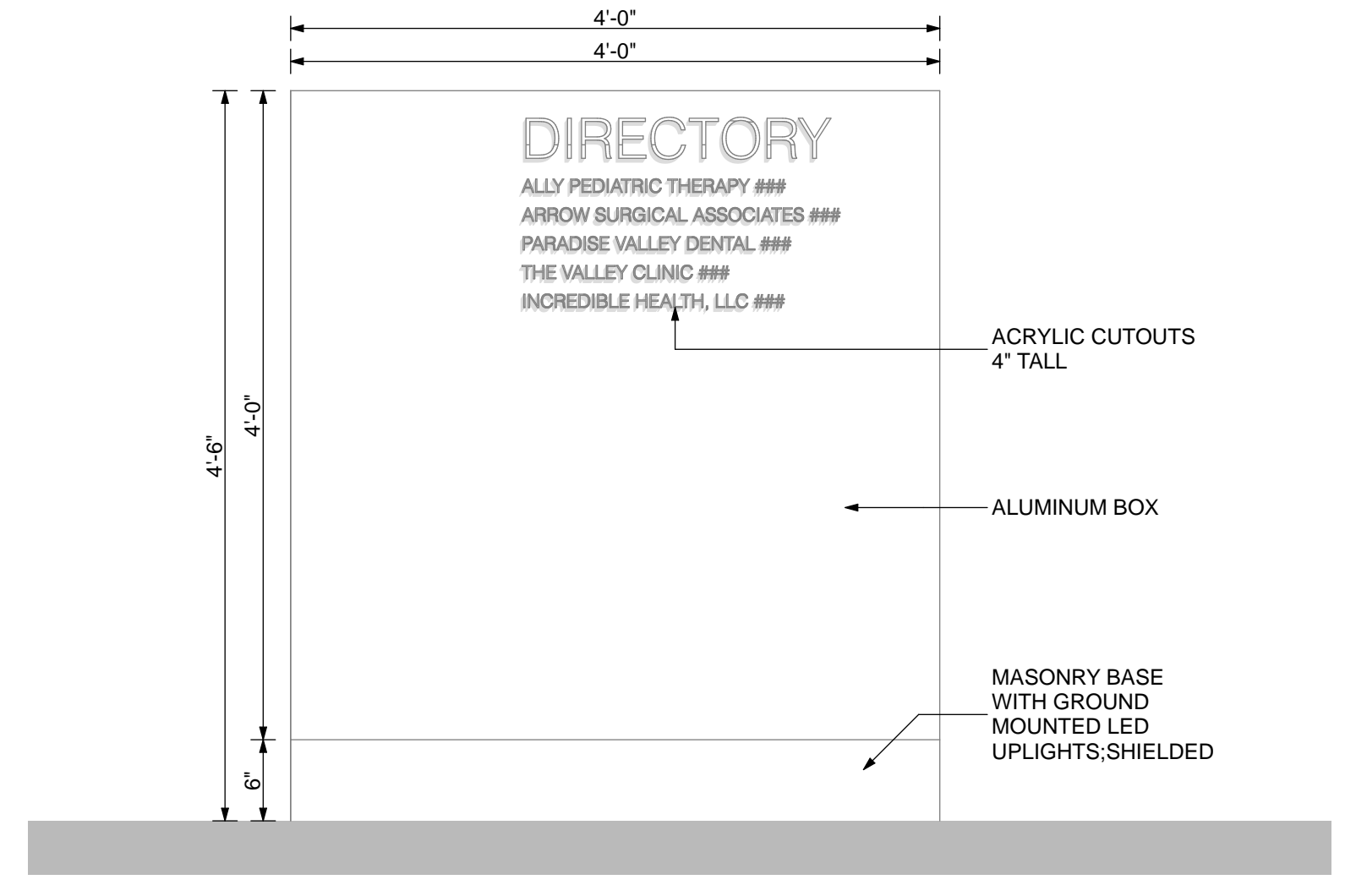
6 BLDGS B,C,D,E DIRECTORY SIDE ELEVATION
0 6" 1' 2'



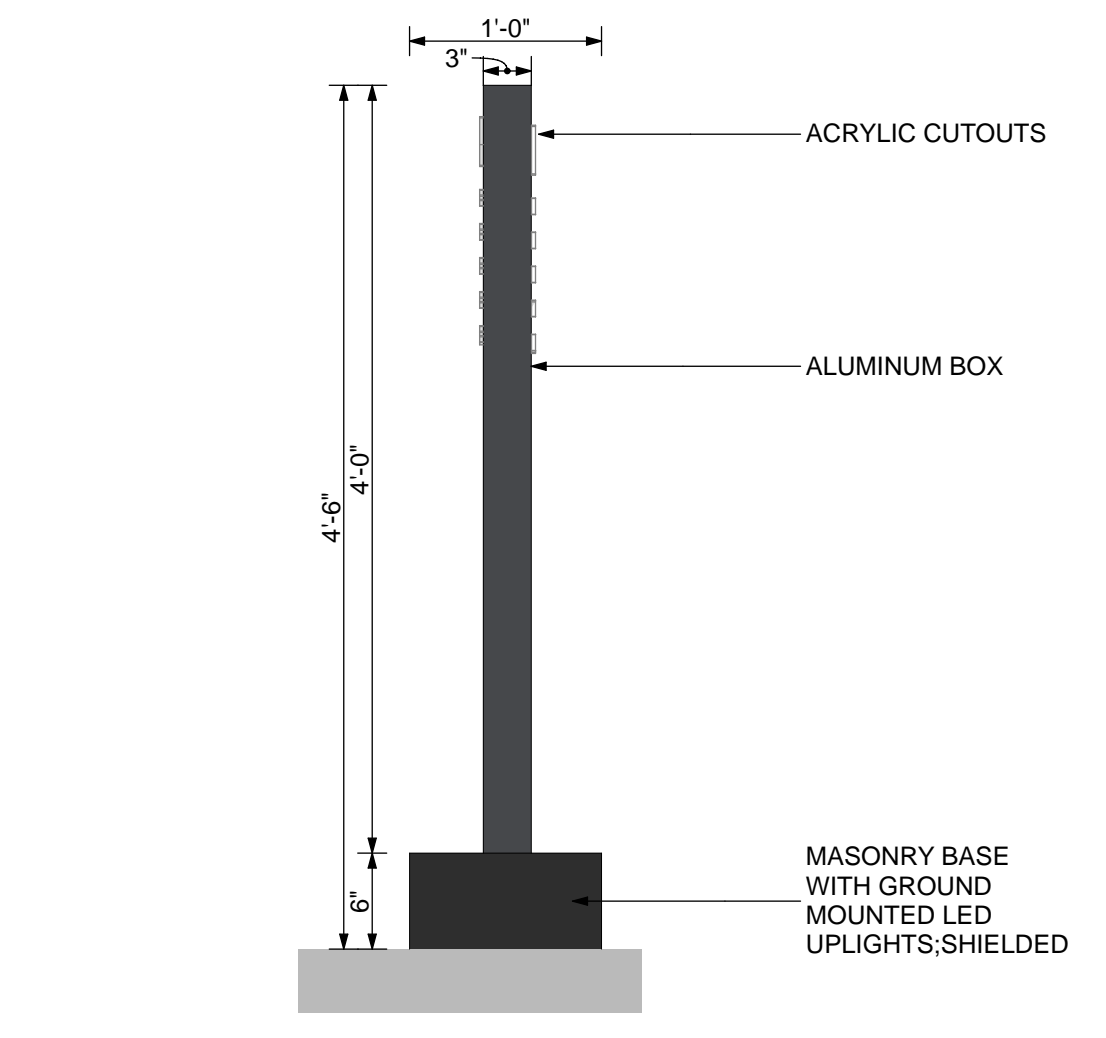
6 BLDGS B,C,D,E DIRECTORY FRONT ELEVATION
0 6" 1' 2'



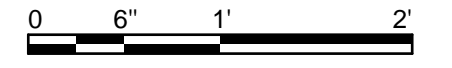
6 BLDGS B,C,D,E DIRECTORY



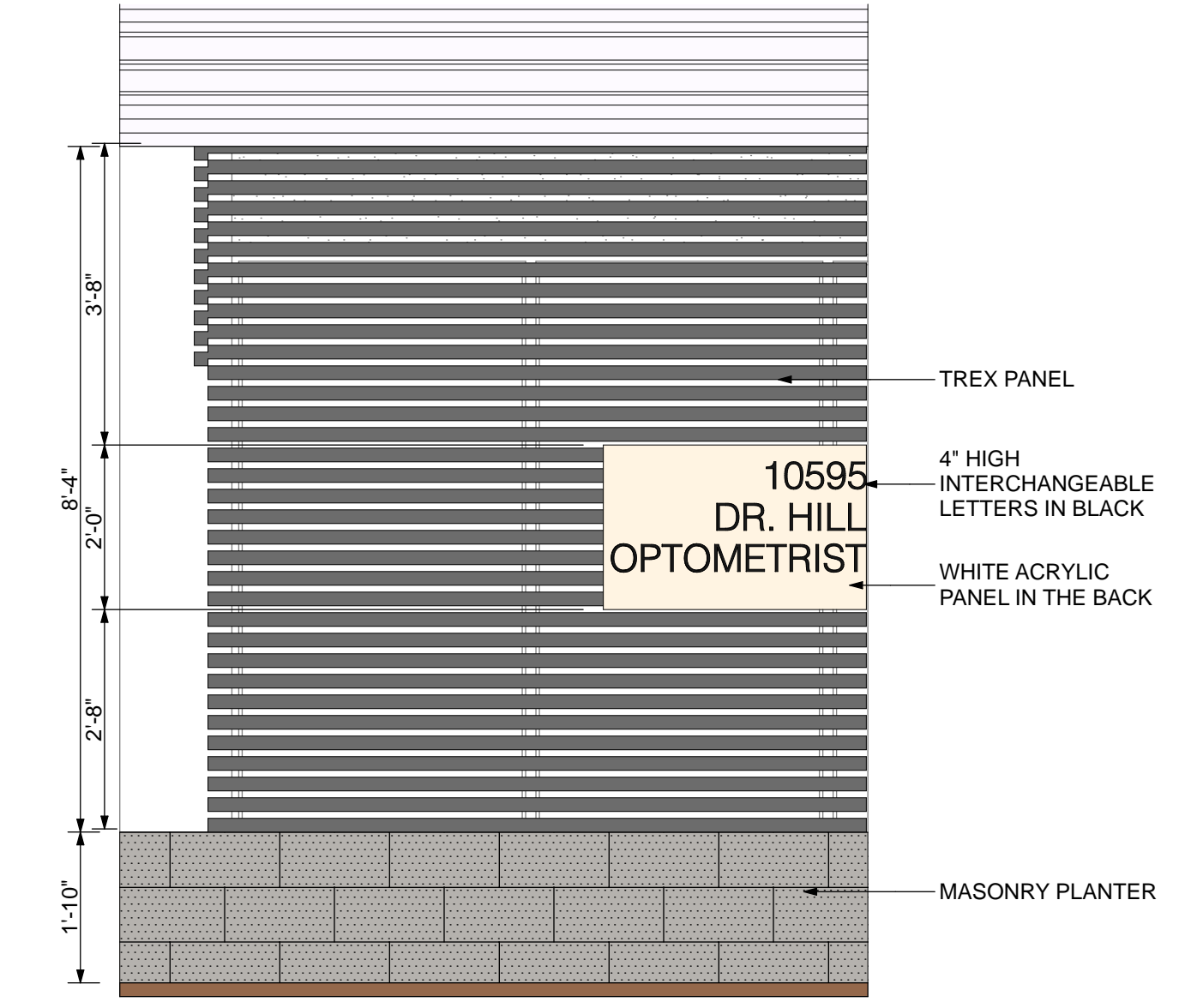
2 BLDGS A&F DIRECTORY FRONT ELEVATION



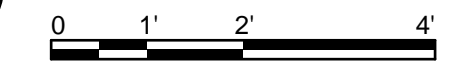
2 BLDGS A&F DIRECTORY SIDE ELEVATION



2 BLDGS A&F DIRECTORY



8 TYP. SUITE SIGN FRONT ELEVATION



© 2017 this third copy or electronic drawing is an instrument of service and the property of the Arcutt|Winslow Partnership and shall remain their property. The design professional shall not be responsible for any alterations, modifications or additions made to this drawing by any party other than the design professional. Use of this drawing shall be limited to the original use for which it was prepared and publication thereof is expressly limited to such use, in full or reproduction. Unless otherwise agreed in writing, design professional reserves all copyright or other proprietary interest in this drawing, and it may not be used for any other purpose without the design professional's written consent. Publication by any method in whole or part is prohibited without the written permission of the design professional. Any information obtained or conclusions derived from this drawing shall be at the user's sole risk.

mountain view medical center, LLC
Mountain View Medical Center Redevelopment
 10555, 10565, 10575, 10585, 10595, 10599 N. Tatum Blvd, Paradise Valley, Arizona 85253

CLIENT CONTACT
 mountain view medical center, LLC 602.802.8106 t
 2944 N. 44th St. Phoenix, AZ 85018

PROJECT NO.	DATE OF ISSUE
2018_041	02.07.2019
REVISION NO.	DATE
1	09.26.2018
2	11.01.2018
3	01.22.2019
4	02.19.2019

PROJECT TEAM DRAWN BY
 John Cantrell BD

PROJECT PHASE
 SUP major amendment
 Review #4
SHEET CONTENTS
 suite sign and directory

SHEET NO.
 05.3.7