

Return to Requestor: 2412385 5102 N Wilkinson Rd-LS (LINK Will Serve Letter)



Geering, Jennifer <Jennifer.Geering@lumen.com>

To katie@ldgeng.com

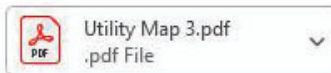
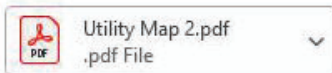
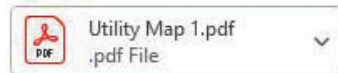
Reply

Reply All

Forward

...

Tue 4/29/2025 2:22 PM



LUMEN

Good Day!

Thank you for your project notification. LUMEN has reviewed your utility notice regarding the **P-658550** | 2412385 5102 N Wilkinson Rd ("Project").

X LUMEN Local/National has facilities within your proposed construction area. Once you have completed your review, please respond back if LUMEN facilities appear to be in conflict. A LUMEN engineer will be assigned when engineering plans are ready for review.

Please contact your [State One Call](#) prior to construction service (click link for state specific requirements).

Any changes or additions to the project plans or parameters should be submitted to [Network Relocations](#) for review of potential new impacts to the LUMEN facilities. **Note:** the location(s) of facilities shown on these drawings you receive from us, are only approximate. LUMEN hereby disclaims any responsibility for the accuracy of this information. Please contact [Network Relocations](#) regarding the above mentioned project if you should have any questions. Please reference the file number **P-658550** with any future communications.

Thank you for your cooperation!

Jennifer Geering
Business Analyst
Network Relocations

****We have combined!!** To better serve everyone, there is now a single email inbox for LUMEN. One team is monitoring both national and local network relocations & road moves. Please add relocations@lumen.com to your contacts list for inquiries, updates, and use it for all future notifications. **

From: katie@ldgeng.com <katie@ldgeng.com>

Sent: Monday, April 21, 2025 11:30 PM

To: relocations <relocations@centurylink.com>

Subject: 2412385 5102 N Wilkinson Rd-LS (LINK Will Serve Letter)

Good morning,

I am contacting you regarding the attached project located in Paradise Valley: 2412385 5102 N Wilkinson Rd
We are in the process of subdividing into a 2-lot subdivision.

The Town of Paradise Valley is requesting formal "Will Serve" letters from the Utility Companies servicing the area.

Please review and let me know if this request is achievable and if there is anything else that we need to provide or another contact we need to address too.

Thank you very much for your assistance!

Thank you,
Katie
LDG
Civil Engineering | Land Surveying
8808 N Central Ave., Suite 288 | Phoenix, AZ 85020
P 602 889 1984 | F 602 445 9482
katie@ldgeng.com



4612 E Bell Road,
Phoenix, AZ 85032

April 22, 2025

Katie Lyulenina

5102 N Wilkinson Rd, Paradise Valley, Arizona, 85253

Re : 2412385 5102 N Wilkinson Rd - LS

Dear Katie Lyulenina,

The above referenced project is located in Arizona Public Service Company's electric service area. The Company extends its lines in accordance with the "Conditions Governing Extensions of Electric Distribution Lines and Services," Service Schedule 3, and the "Terms and Conditions for Standard Offer and Direct Access Services," Service Schedule 1, on file with the Arizona Corporation Commission at the time we begin installation of the electric facilities.

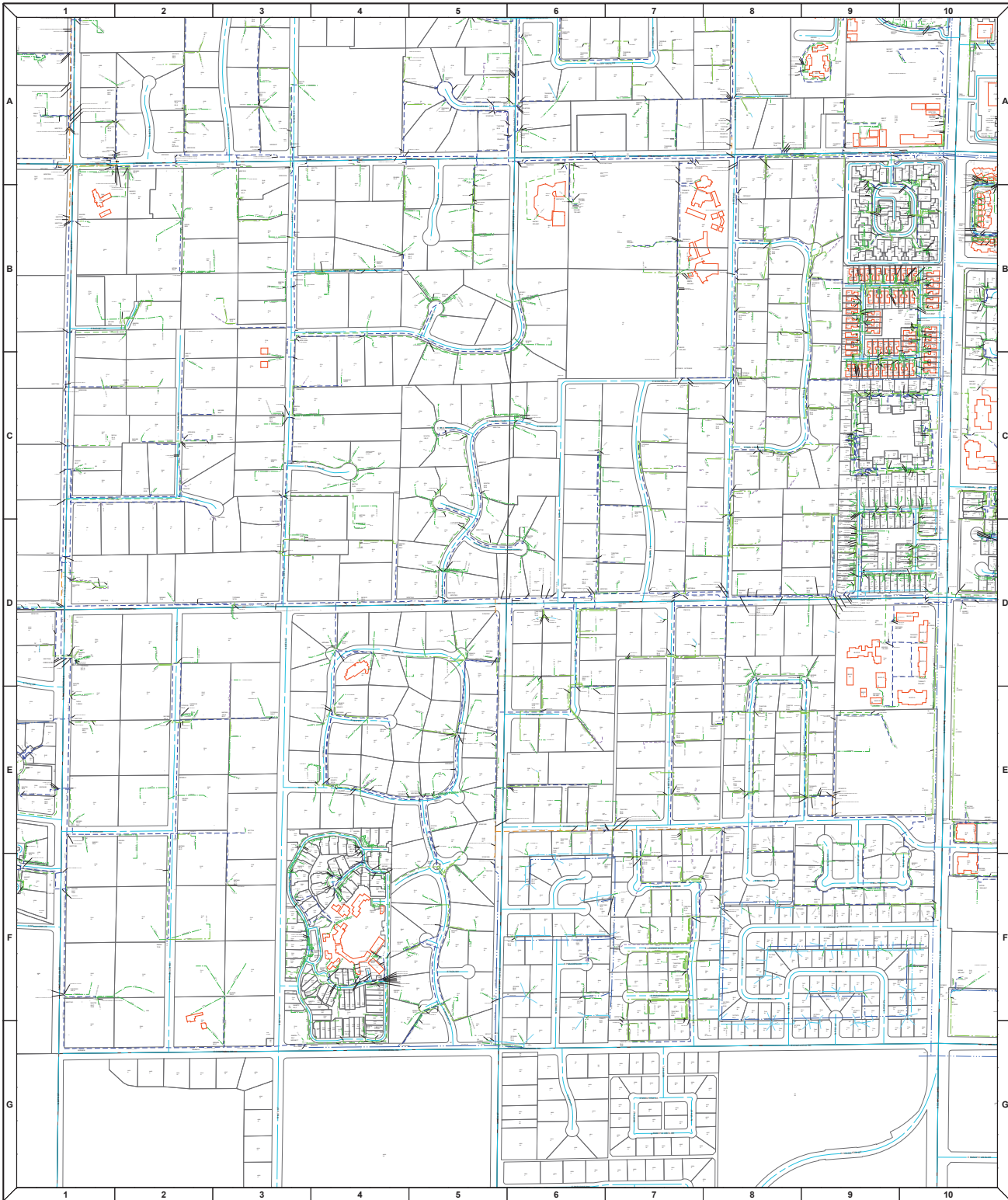
Application for the Company's electric service often involves construction of new facilities for various distances and costs depending upon customer's location, load size and load characteristics. It is ***important*** that you provide this information to the Company as soon as possible; if you do not or provide incomplete information, Arizona Public Service cannot complete our evaluation of your application and determine the conditions under which Arizona Public Service will extend its facilities.

Fill out an application or estimate request on the [Portal](#) to provide more details.

The Service [Schedule 3](#) policy governs the extension of overhead and underground electric facilities to customers whose requirements are deemed by Arizona Public Service to be usual and reasonable in nature.

Sincerely,

Arizona Public Service Co.
CUSTOMER CONSTRUCTION EAST Service Center



GIS MAPPING DEPARTMENT
STATION 4028
PO BOX 53933
PHOENIX AZ 85072-3933
E-MAIL: mapping@apsc.com

APS Proprietary and Confidential Information

DO NOT COPY, SCAN, OR DIGITIZE
DO NOT DISTRIBUTE
COPYRIGHT © 2002
ARIZONA PUBLIC SERVICE
ALL RIGHTS RESERVED

NOTICE:
THE UTILITY LOCATIONS SHOWN ON
THIS MAP ARE APPROXIMATE ONLY
AND ARE NOT RELIABLE FOR
CONSTRUCTION PURPOSES. IN
ADDITION, THERE MAY BE FACILITIES
IN EXISTENCE DUE TO RECENT
CONSTRUCTION THAT ARE NOT SHOWN.
FOR ACTUAL FIELD LOCATIONS
CONTACT ARIZONA BLUE STAKE CENTER
AT 1-800-782-5348 (1-800-STAKE-IT).

Electric Line Features Legend

- Overhead Primary
- Overhead Aerial Cable
- Overhead Secondary
- Overhead Service
- Underground Secondary
- Underground Service
- Underground Primary
- Underground Transmission
- Underground 230 kV Transmission
- Overhead Transmission
- Overhead Communication Line
- Underground Communication Line
- Conduit / Duct / Direct Buried

Electric Device Features Legend

- Overhead Capacitor Bank
- Pad Mounted Capacitor
- Feeder Circuit Breaker
- Fuse Disconnect
- One Anchor Guy
- OHIS Change in Wire/Conduit Size
- Overhead Tap Mid-Span
- PM Auto Transfer Enclosure
- PM Switching Enclosure
- PM Junction Enclosure
- PM Sectioning Enclosure
- PM Termination Enclosure
- OH Auto Transfer Switch
- OH Recloser
- OH Sectionizer
- Pad Mounted Sectionizer
- Wood Pole - APS Owned - Not Joint Use
- Wood Pole - APS Owned - Joint Use
- Wood Pole - APS Owned - Not Joint Use
- Wood Pole - APS Owned - Joint Use
- Steel/Transformer Assembly
- OH Primary Meter
- Service Entry Point
- Pad Mounted Primary Meter
- Duck-To-Down Light
- Street Light
- Substation
- OH Blade Disconnect
- OH Gang-Operated Air Break Switch
- Open Post
- Manhole - Octagon
- Manhole - Rectangular
- Primary Pad Box - Max Assembly
- Primary Junction Box
- Secondary Junction Box
- Primary Pad Box
- Vault Building
- OH Voltage Regulator
- Pad Mounted Voltage Regulator
- OH APS XFR Bank - One Unit
- OH APS XFR Bank - Two Units
- OH APS XFR Bank - Three Units
- Pad Mounted 2 Ph XFR
- Pad Mounted Duplex XFR
- Pad Mounted 3 Ph XFR
- Subsurface XFR

Wire Code Legend

- Overhead:
- R-XXXX-XX-APS
- R-XXXX-XX-APS
- R-XXXX-XX-APS
- R-XXXX-XX-APS
- Underground:
- U-XXXX-XX-APS
- U-XXXX-XX-APS
- U-XXXX-XX-APS
- U-XXXX-XX-APS

Arizona Public Service

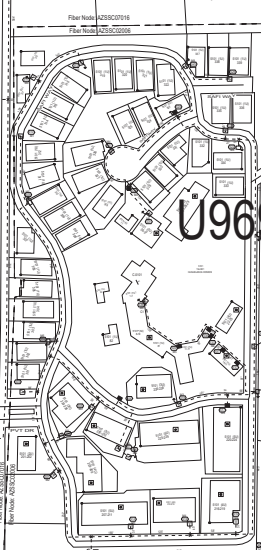
OH & UG ELECTRIC

2N 4E 15 NE

Date: 11/17/2015

Scale: 1:2,515

1" = 210'

[illegible]

EXISTING MAIN
PROPOSED MAIN
PROPOSED ABANDONED MAIN
WASTE CROSS OVER
WASTE TIED TOGETHER
CAPPING
END OF PIPE
TWO TYPES OF PIPE JOIN
VALVE - SPOT
VALVE - GLOBE
LINE STOPPER
BRANCH FITTING - 2-WAY TEE
CURVE VALVE TEE
BRANCH - W/SHOULDER 3-WAY
FITTING - 90° ELBOW
FITTING - REDUCER
FITTING - TEE
FITTING - CROSSING
FITTING - BLIND END
REG. STATION - ABOVE GROUND
REG. STATION - VAULTED
METER SET ASSEMBLY - ABOVE GROUND
METER SET ASSEMBLY - VAULTED
PRESSURE RECORDER
BOND BAR
ISOLATED FLANGE
ISOLATED WELD
COMPRESSION COUPLING
TEST POINT
TEST POINT ON CASING
ELECTROFUSION
LINE CLAMP
ANODE
ANODE W/TEST POINT AT TOP
TRACERATOR
RECTIFIER STA. W/GROUND BED
EXISTING SERVICE LINE
WATER - STEEL
WATER - WROUGHTLESS
SERVICE SLEEVE
GAS LAMP - STEEL
GAS LAMP - WROUGHTLESS
EXCESS FLOW VALVE
LOCATION - GAS
LINE LOCATE POINT
SEAM
LEAK REPAIR SYMBOL
FORCED PIPE LINE
RAIL ROAD TRACKS
GATE TAP
SECTION CORNER
POINT OF INTEREST

NOTE:
SOUTHWEST GAS CORPORATION DOES NOT GUARANTEE THE
ACCURACY OF THE LOCATIONS OR ELEVATIONS OF THE UTILITIES AS
SHOWN ON THE MAP.



19-43
OLD DOC NUMBER

SW1/4 SEC 15 T2N R4E

2020040154
USGS NUMBER

NOT TO SCALE
03/16/2017



SOUTHWEST GAS CORPORATION
GAS DISTRIBUTION SYSTEM
CENTRAL ARIZONA DIVISION

TAN RITE Sec 158W

FOR YOU BECAUSE
WE LIVE HERE
AND WE KNOW THE AREA
BETTER THAN ANYONE ELSE
WE CAN HELP YOU FIND
THE BEST LOCATION FOR
YOUR BUSINESS
AND WE'LL TAKE CARE OF
ALL THE DETAILS
SO YOU CAN GET ON WITH
YOUR DAY

CENTURYLINK CONFIDENTIAL AND PROPRIETARY
INFORMATION. DISCLOSED TO GOVERNMENTAL
AGENCY PURSUANT TO LAW. NOT TO BE
DISCLOSED BY GOVERNMENTAL AGENCY TO ANY
THIRD PARTY WITHOUT WRITTEN AUTHORIZATION
BY CENTURYLINK, INC.



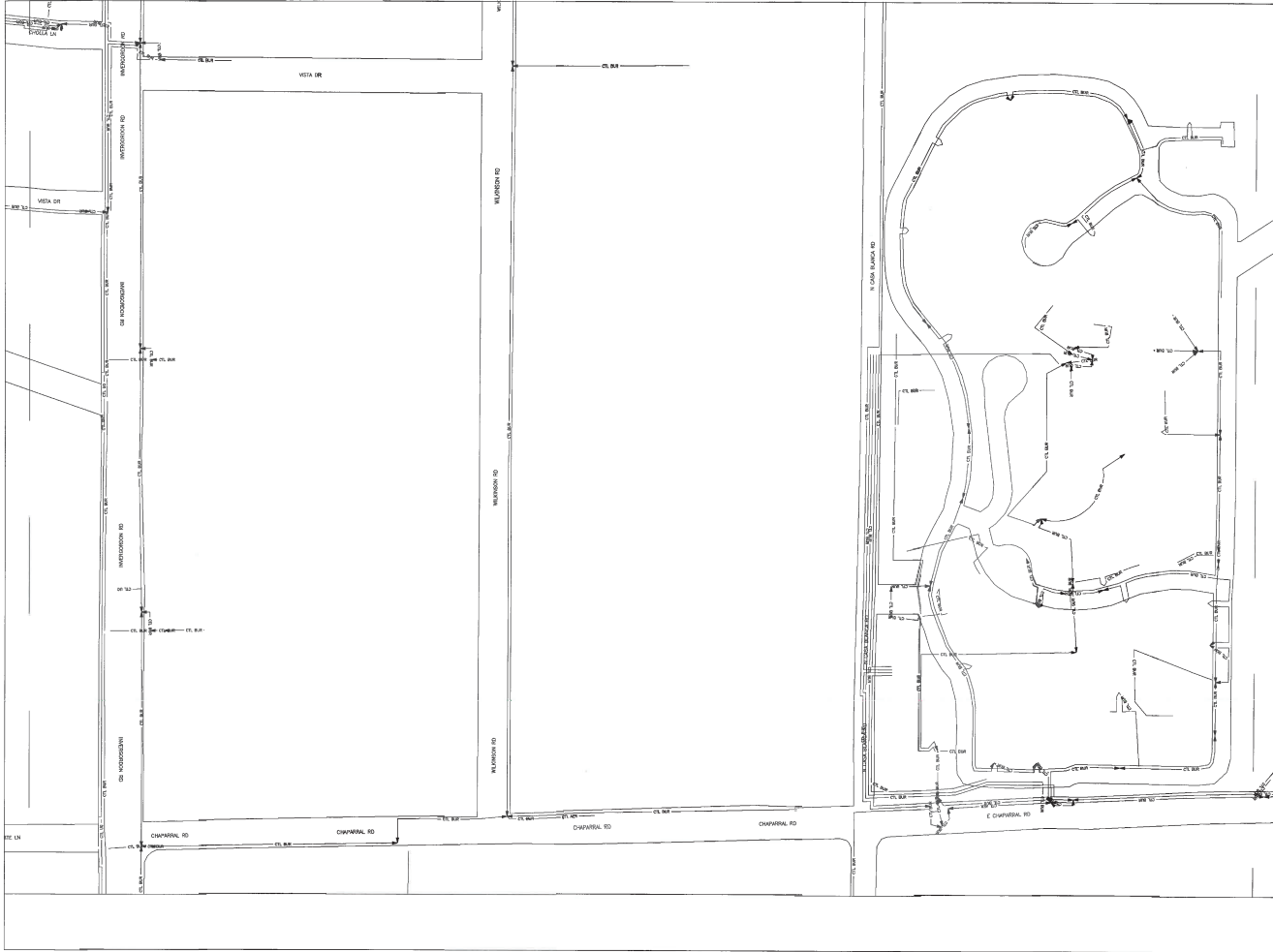
WIRE CENTER
SCOTTSDALE
ARIZONA

Grid ID: (Lat/Long)
33.5089/-111.9431

1" = 150'



DISCLAIMER: All Facility Locations are
Approximate and Facilities Must be
Spotted by Appropriate Agency
Prior to Excavation



T2N 41E Sec. 15 SW

CALL AT LEAST TWO (2) FULL WORKING DAYS
BEFORE YOU BEGIN EXCAVATION.
ARIZONA BLUE STAKE, INC.
DIAL 800-368-3348
IN MARICOPA COUNTY, ARIZONA
ALL LOCATIONS ARE APPROXIMATE
AND NOT TO BE USED FOR ANY EXCAVATION.
PRINTS ARE NOT TO SCALE.

CENTURYLINK CONFIDENTIAL AND PROPRIETARY
INFORMATION. DISCLOSED TO GOVERNMENTAL
AGENCY PURSUANT TO LAW. NOT TO BE
DISCLOSED BY GOVERNMENTAL AGENCY TO ANY
THIRD PARTY WITHOUT WRITTEN AUTHORIZATION
BY CENTURYLINK INC..



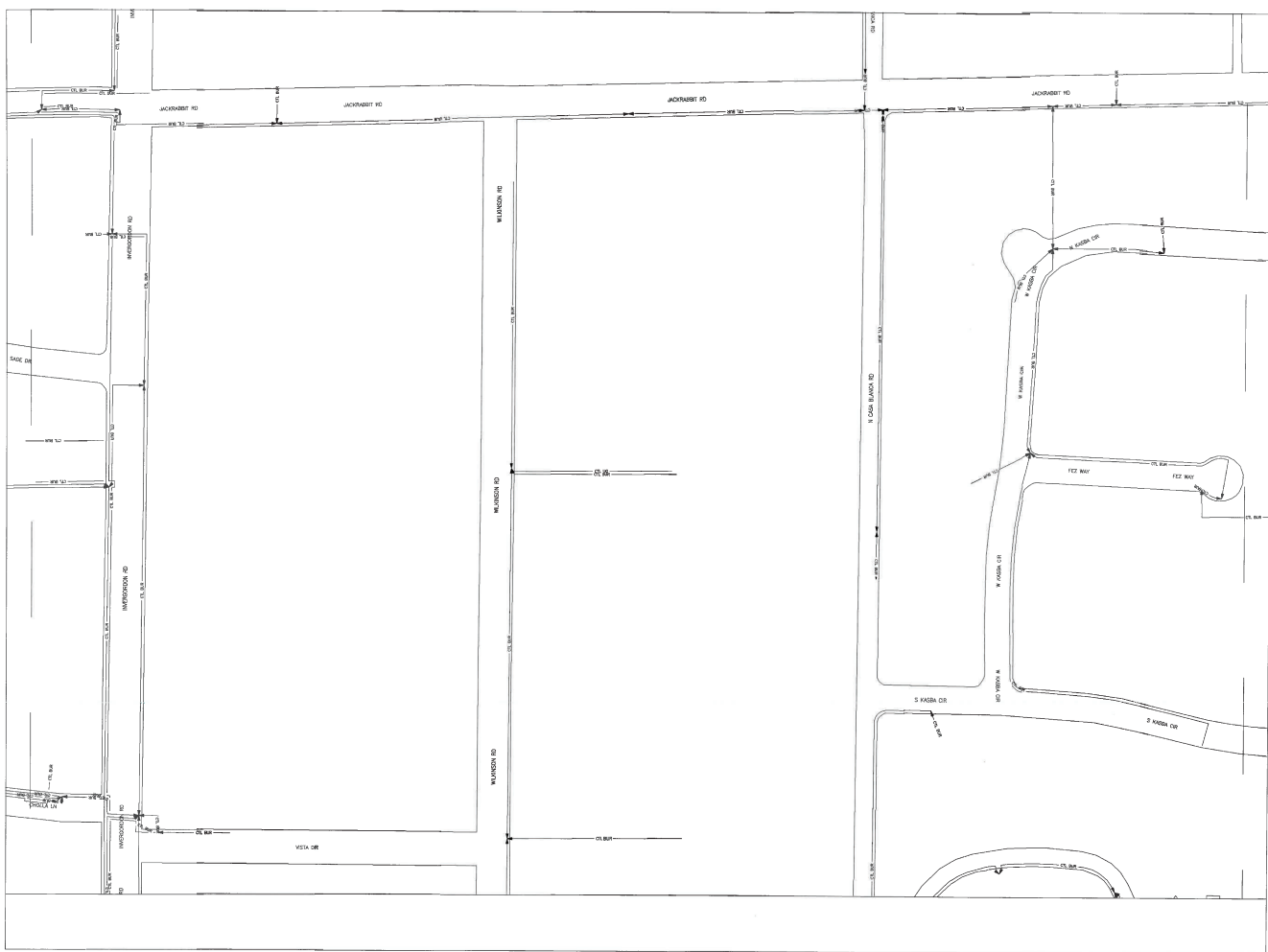
WIRE CENTER
SCOTTSDALE
ARIZONA

Grid ID: (Lat/Long)
33.51265/-111.9431

1" = 150'



DISCLAIMER: All Facility Locations are
Approximate and Facilities Must be
Spotted by Appropriate Agency
Prior to Excavation



CALL AT LEAST TWO (2) FULL WORKING DAYS
BEFORE YOU BEGIN EXCAVATION.
ARIZONA 311
ARIZONA BLUE STAKE, INC.
DIAL 9-1-1 OR 1-800-STAKE-IT (782-6349)
IN MARICOPA COUNTY: 602-263-1100
ALL LOCATIONS ARE APPROXIMATE.
PLEASE CALL ARIZONA BLUE STAKE
FOR LOCATION OF UTILITIES
AND PRIOR TO ANY EXCAVATION.
PRINTS ARE NOT TO SCALE.

CENTURYLINK CONFIDENTIAL AND PROPRIETARY
INFORMATION. DISCLOSED TO GOVERNMENTAL
AGENCY PURSUANT TO LAW. NOT TO BE
DISCLOSED BY GOVERNMENTAL AGENCY TO ANY
THIRD PARTY WITHOUT WRITTEN AUTHORIZATION
BY CENTURYLINK INC..



WIRE CENTER
SCOTTSDALE
ARIZONA

Grid ID: (Lat/Long)
33.51276/-111.94046

$$1'' = 150'$$


DISCLAIMER: All Facility Locations are
Approximate and Facilities Must be
Spotted by Appropriate Agency
Prior to Excavation



Water Resources

9379 E. San Salvador
Scottsdale, AZ 85258

PHONE 480-312-5685
FAX 480-312-5615
www.ScottsdaleAZ.gov

May 22, 2025

Maricopa County Environmental Services Department
301 W Jefferson Street, Suite 170
Phoenix, Arizona 85003

**Re: Sanitary Sewer Connection– For Properties Feeding into the Sewer Collection System
from the Town of Paradise Valley:**

**5102 N Wilkinson Road
Paradise Valley, AZ 85253
APN 173-20-007**

To Whom It May Concern:

This letter is provided to satisfy those submittal requirements under General Aquifer Protection Permit 4.01 for extension of a sanitary sewer collection system as indicated below:

The City of Scottsdale's sanitary sewer collection system has sufficient capacity to accept the flows generated from this project and convey those flows to the City of Scottsdale Princess Metering Station.

The segment of City of Scottsdale's sanitary sewer collection system which discharges to the Princess Metering Station has sufficient capacity to accept the wastewater resulting from the treatment of flows generated from this project. Downstream of the Princess metering station, these residual flows enter into the Sub-regional Operating Group (SROG) Salt River Outfall (SRO) trunk line.

The additional volume of wastewater delivered to the 91st Avenue Wastewater Treatment Plant by the proposed sewage collection system will not cause any flow or effluent quality limits to be exceeded by the individual permit for this facility.

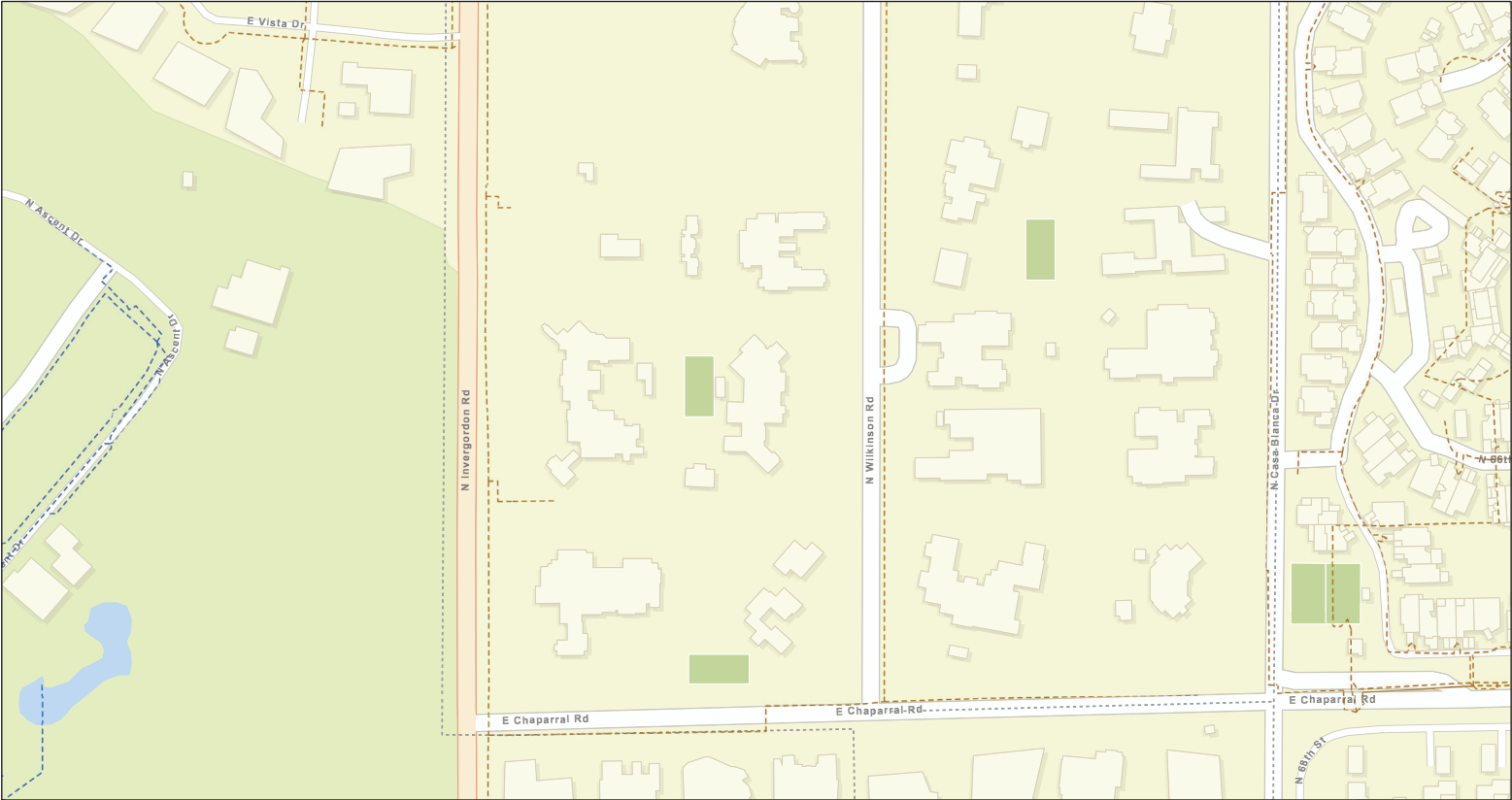
If you require further information, you may reach the Water Resources Department at 480-312-5685.

Sincerely,

A handwritten signature in black ink that reads "Julia Campo". Below the signature is a red horizontal line with a timestamp "05/22/2025 1:45:09 PM" in red text.

Julia Campo
Water Resources Engineer
Scottsdale Water

Lumen Facility Map



4/29/2025, 3:05:53 PM

Local Copper UG Route

Underground, In Service

Local Copper Aerial Route

Aerial, In Service

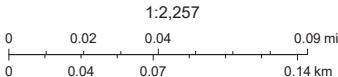
Fiber Cables

Underground, In Service

Underground, Pending Placement

Fiber Routes

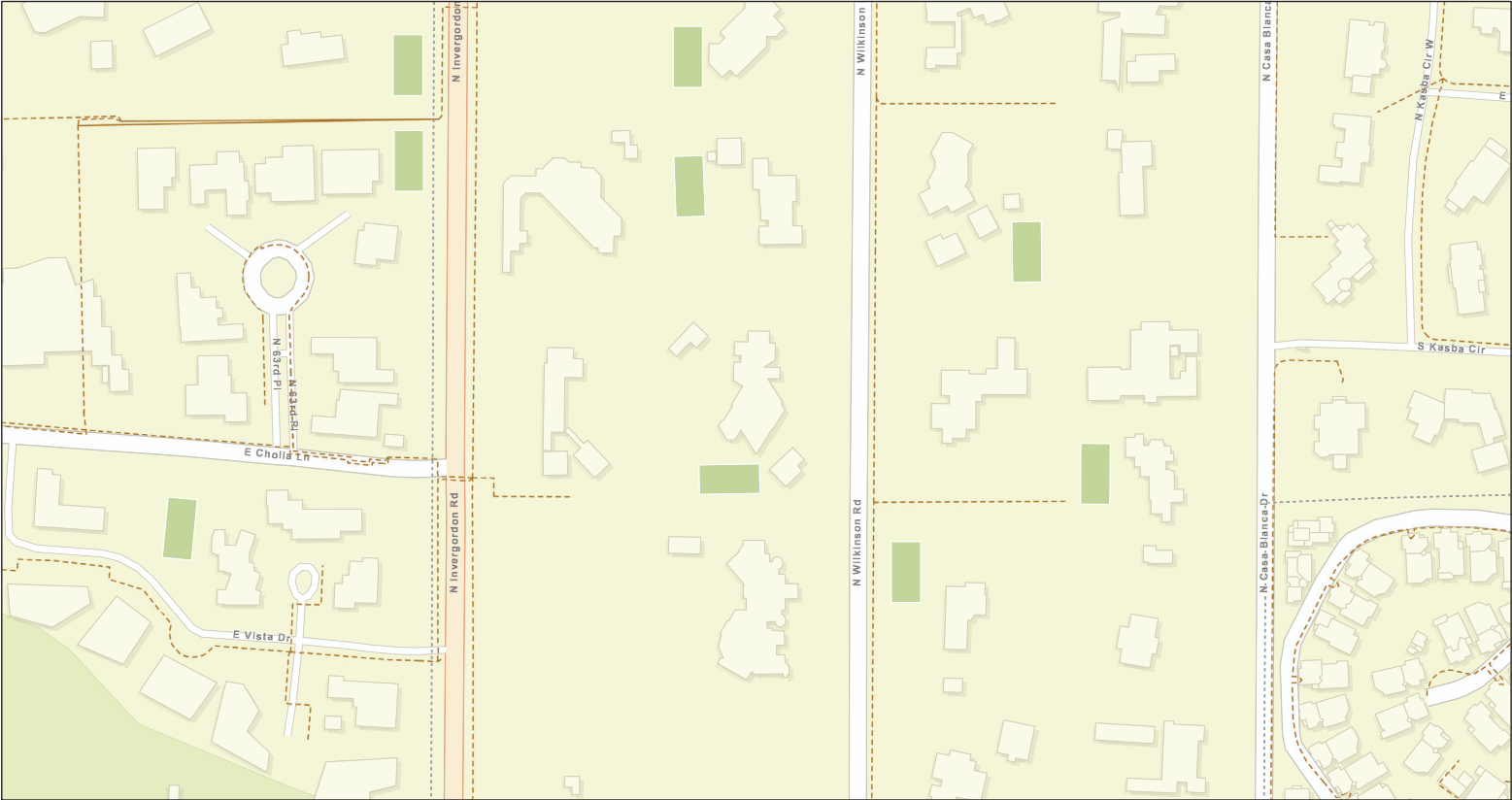
Underground, In Service



Esri Community Maps Contributors, City of Phoenix, © OpenStreetMap, Microsoft, Esri, TomTom, Garmin, SafeGraph, GeoTechnologies, Inc, METI/NASA, USGS, Bureau of Land Management, EPA, NPS, US Census Bureau, USDA, USFWS

Note: Facilities shown are only approximate and Lumen hereby disclaims any responsibility to third parties for the accuracy of this information. Persons working in the area must contact statewide Call-Before-You-Dig systems.

Lumen Facility Map



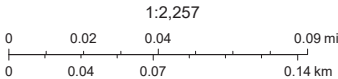
4/29/2025, 3:06:34 PM

Local Copper UG Route

--- Underground, In Service

Local Copper Aerial Route

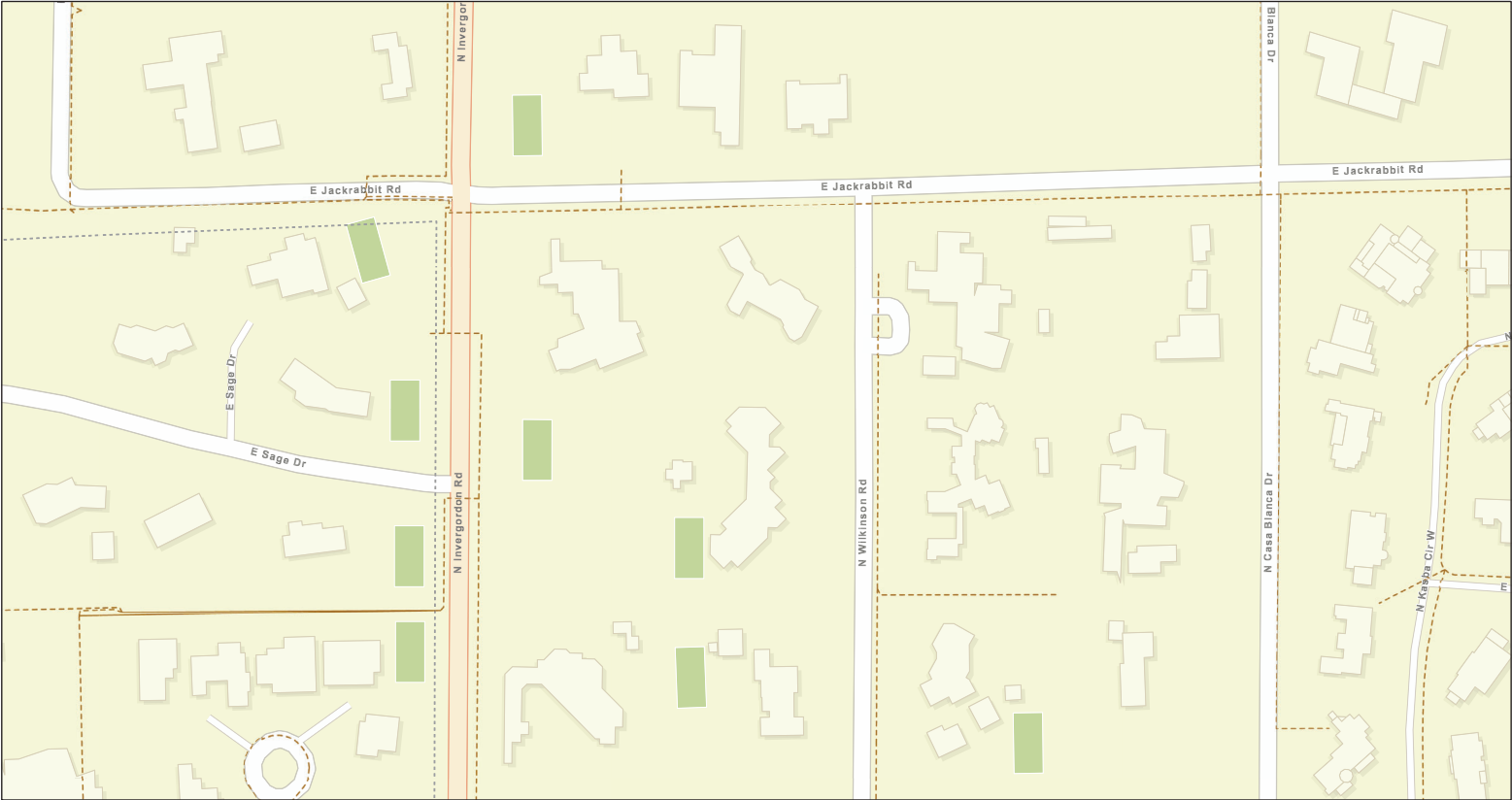
— Aerial, In Service



Esri Community Maps Contributors, City of Phoenix, © OpenStreetMap, Microsoft, Esri, TomTom, Garmin, SafeGraph, GeoTechnologies, Inc, METI/NASA, USGS, Bureau of Land Management, EPA, NPS, US Census Bureau, USDA, USFWS

© map data Lumen © 1992 – 2023 TomTom
Note: Facilities shown are only approximate and Lumen hereby disclaims any responsibility to third parties for the accuracy of this information. Persons working in the area must contact statewide Call-Before-You-Dig systems.

Lumen Facility Map



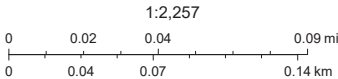
4/29/2025, 3:13:00 PM

Local Copper UG Route

Underground, In Service

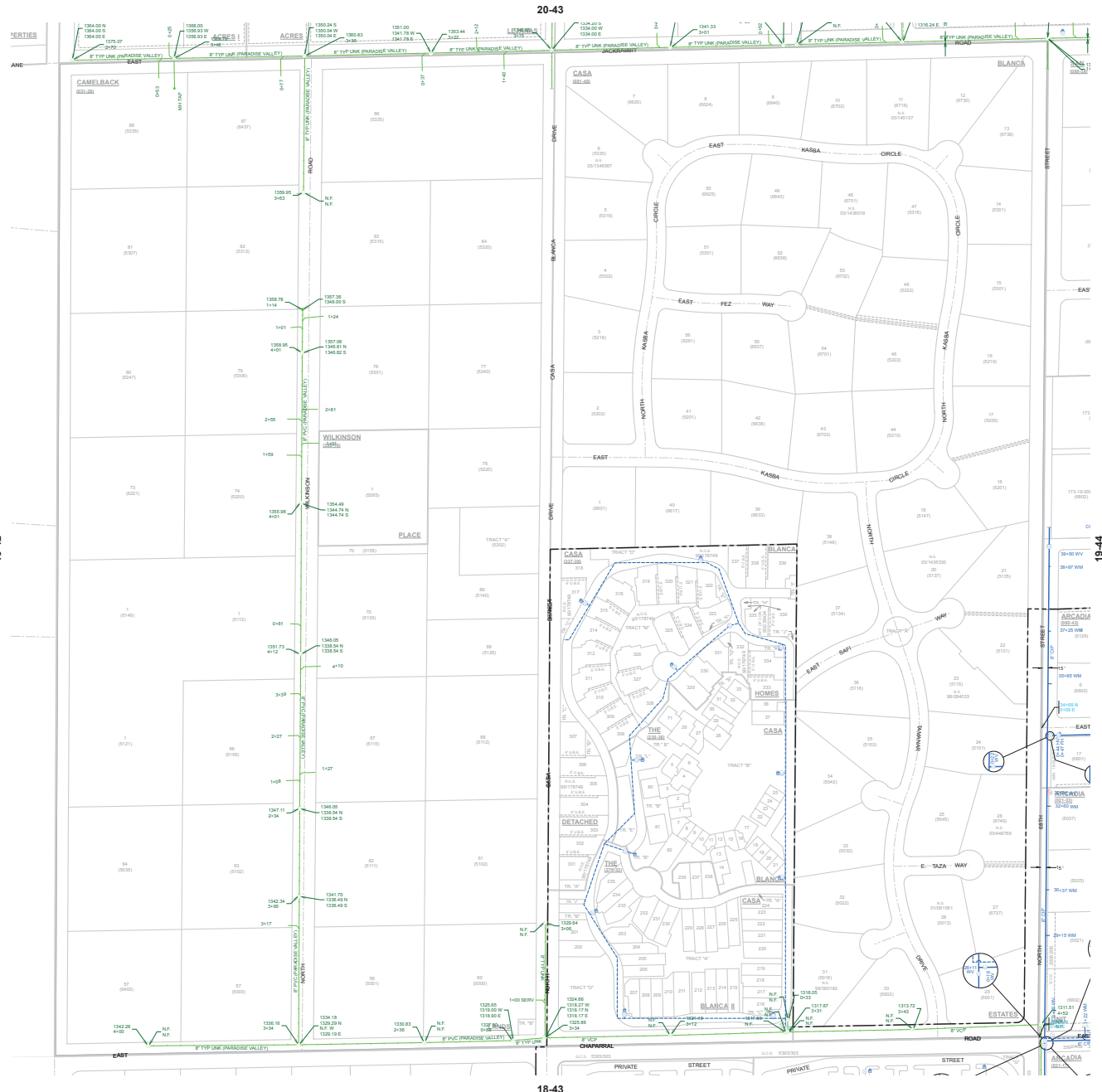
Local Copper Aerial Route

Aerial, In Service



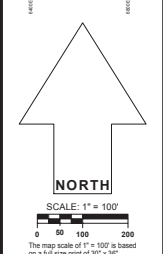
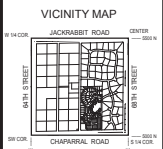
Esri Community Maps Contributors, City of Phoenix, © OpenStreetMap, Microsoft, Esri, TomTom, Garmin, SafeGraph, GeoTechnologies, Inc, METI/NASA, USGS, Bureau of Land Management, EPA, NPS, US Census Bureau, USDA, USFWS

© map data Lumen © 1992 – 2023 TomTom
Note: Facilities shown are only approximate and Lumen hereby disclaims any responsibility to third parties for the accuracy of this information. Persons working in the area must contact statewide Call-Before-You-Dig systems.



GENERAL NOTES:
 1. THIS IS A COMPUTER GENERATED DRAWING FOR ANY REVISIONS PLEASE CONTACT THE CITY OF SCOTTSDALE GIS DEPARTMENT AT (480) 312-7782.
 2. THE SECTION LINE BEARING AND DISTANCE ARE BASED ON THE CITY OF SCOTTSDALE LUMP SUM OF SURVEYS FOR BOUNDARIES. NO TO BE USED FOR OTHER PURPOSES ARE PLATTED TO RECORD. WHERE NO CORNER WAS FOUND THE DIMENSIONS ARE GIVEN TO CALCULATED SECTION CORNERS AND ARE NOTED AS CALCULATED ON THE MAP.

- LEGEND:**
- Water Valve
 - Non-potable Water Valve
 - Fire Hydrant
 - Water Blowoff
 - Water Main Reducer
 - Water Sample Station
 - Water Air Release Valve
 - Non-potable Water Air Release Valve
 - Water Pressure Reducing Valve
 - Water Vault
 - Water Manhole
 - Non-Potable Water Manhole
 - Water Pump
 - Water Main
 - Non-Potable Water Main
 - Fire Line
 - Water Service
 - Non-Scottsdale Water Main
 - Sewer Manhole
 - Sewer Cleanout
 - Sewer Treatment Plant
 - Sewer Main - Gravity
 - Sewer Main - Force
 - Non-Scottsdale Sewer Main
 - Sewer Service



WATER & SEWER
 QUARTER SECTION MAP
19-43
 SW 1/4 SEC. 15 T2N R4E



2355 West Pinnacle Peak Road, Suite 300
Phoenix, AZ 85027 USA
epcor.com

May 22, 2025

Nick Prodanov
LDG Civil Engineering/Land Surveying
8808 N Central Ave, Ste 288
Phoenix, AZ 85020
Sent via Epcor Portal

Re: Will Serve Letter for Water Service
5102 N Wilkinson Rd, Paradise Valley, AZ 85253 – APN 173-20-007 (the "Property")

Dear Nick,

This letter is in response to your request for a Will-Serve Letter from EPCOR Water Arizona Inc. ("EPCOR") for the Property shown in Exhibit A. EPCOR confirms that the Property is located within the area encompassed by EPCOR's Certificate of Convenience and Necessity ("CC&N") and is specifically located within EPCOR's Paradise Valley District. EPCOR will provide water service to the Property in accordance with EPCOR's tariffs, the Arizona Corporation Commission's rules and regulations, and, if applicable, the terms and conditions of a Main Extension Agreement. It is the applicant's responsibility to design and construct, at its sole cost, the necessary water facilities (the "Facilities") to serve the Property subject to EPCOR's approval.

The design of the Facilities must comply with EPCOR's standard specifications and the Arizona Department of Environmental Quality's rules and regulations. The applicant shall not begin construction of any part of the Facilities for the Property without the prior written approval of such construction by EPCOR.

This letter does not independently create any rights or obligations in either the applicant or EPCOR and is provided to the applicant for information only. Any agreement between the applicant and EPCOR for service to the Property must be memorialized in a written agreement, signed and delivered by their respective authorized representatives prior to construction.

A.R.S. 45-576 requires a person who proposes to offer subdivided land for sale in Active Management Areas, not served by a designated provider, to obtain a Certificate of Assured Water Supply ("CAWS") from the Arizona Department of Water Resources. This letter is not an indication that the requirement to obtain a CAWS has been met.

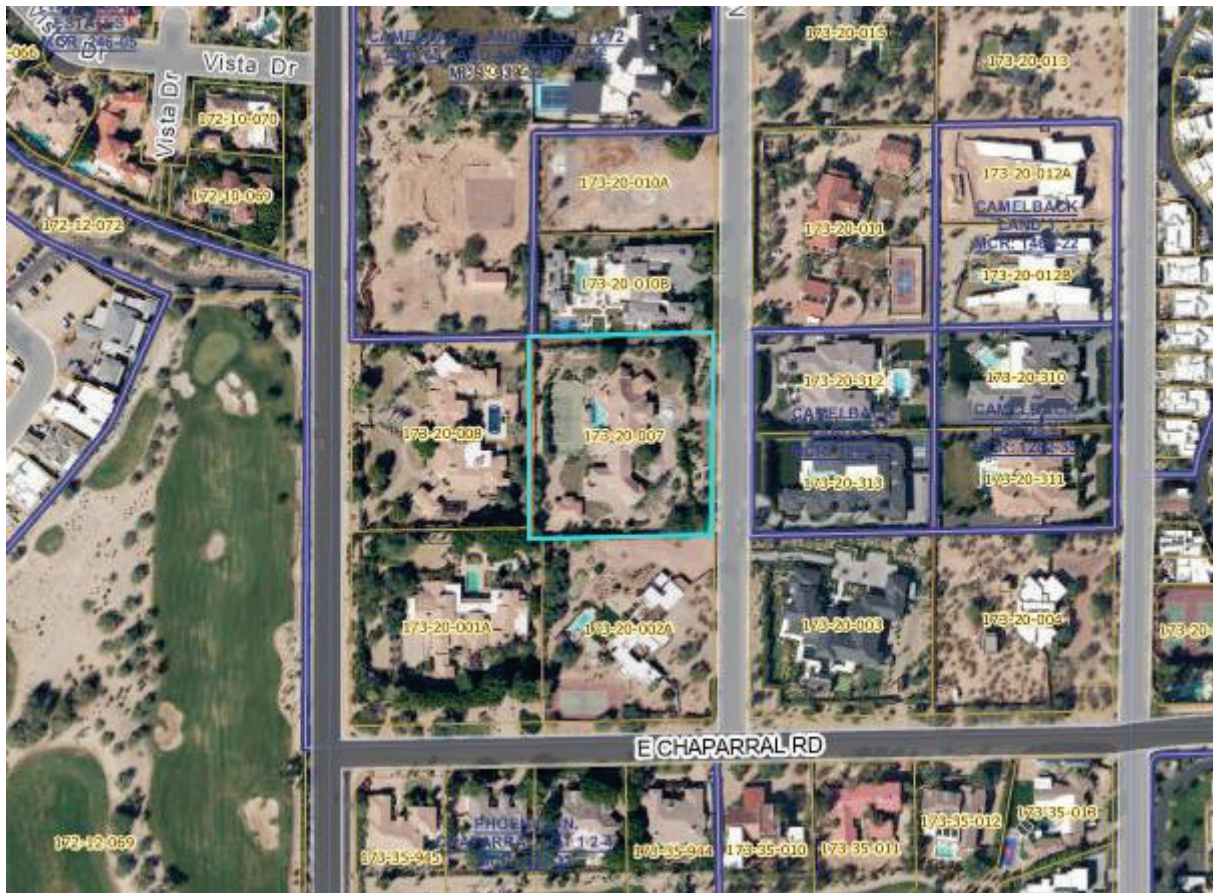
Please contact me if you have any questions at (480) 815-3823 or at mchristensen1@epcor.com

Sincerely,

A handwritten signature in black ink, appearing to read "M. Christensen".

Molly Christensen
Developer Services

EXHIBIT A
Location of Property



QUARTER SECTION MAPS



Eastern Division

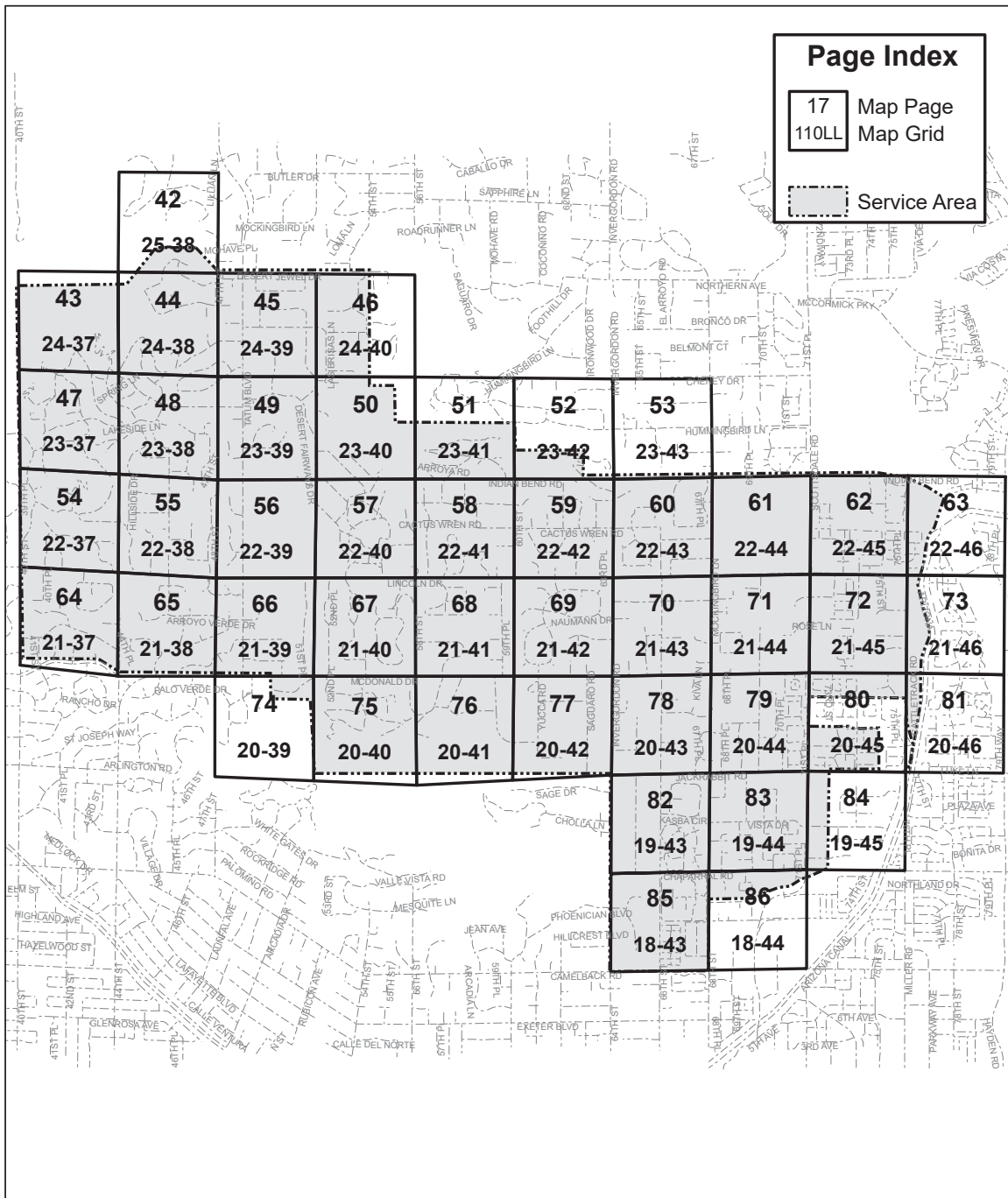
WATER SYSTEM

JULY 2012
UPDATED: MAY 2014

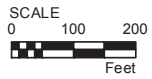


WATER

Paradise Valley Water Index



WATER SYSTEM



AREA BOUNDARIES



LAND FEATURES

Street Centerline

Lotlines

TYPICAL LOT

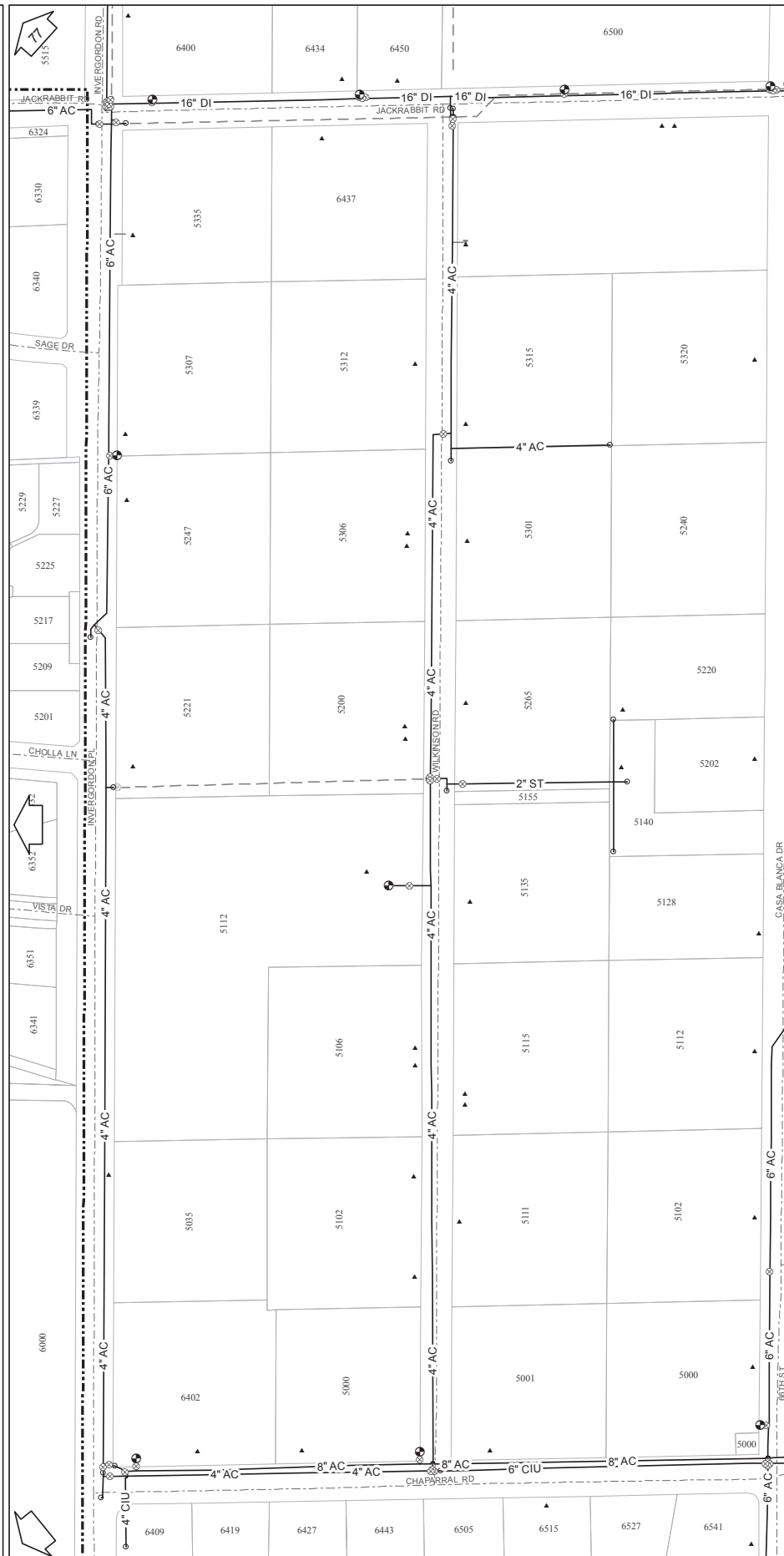
ADDRESS
NUMBER

123

MAP PAGES

77	78	79
	82	83
	85	86

2N4E SW15
SW 1/4 SECTION 15
Mapgrid: 19-43

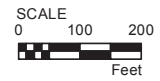
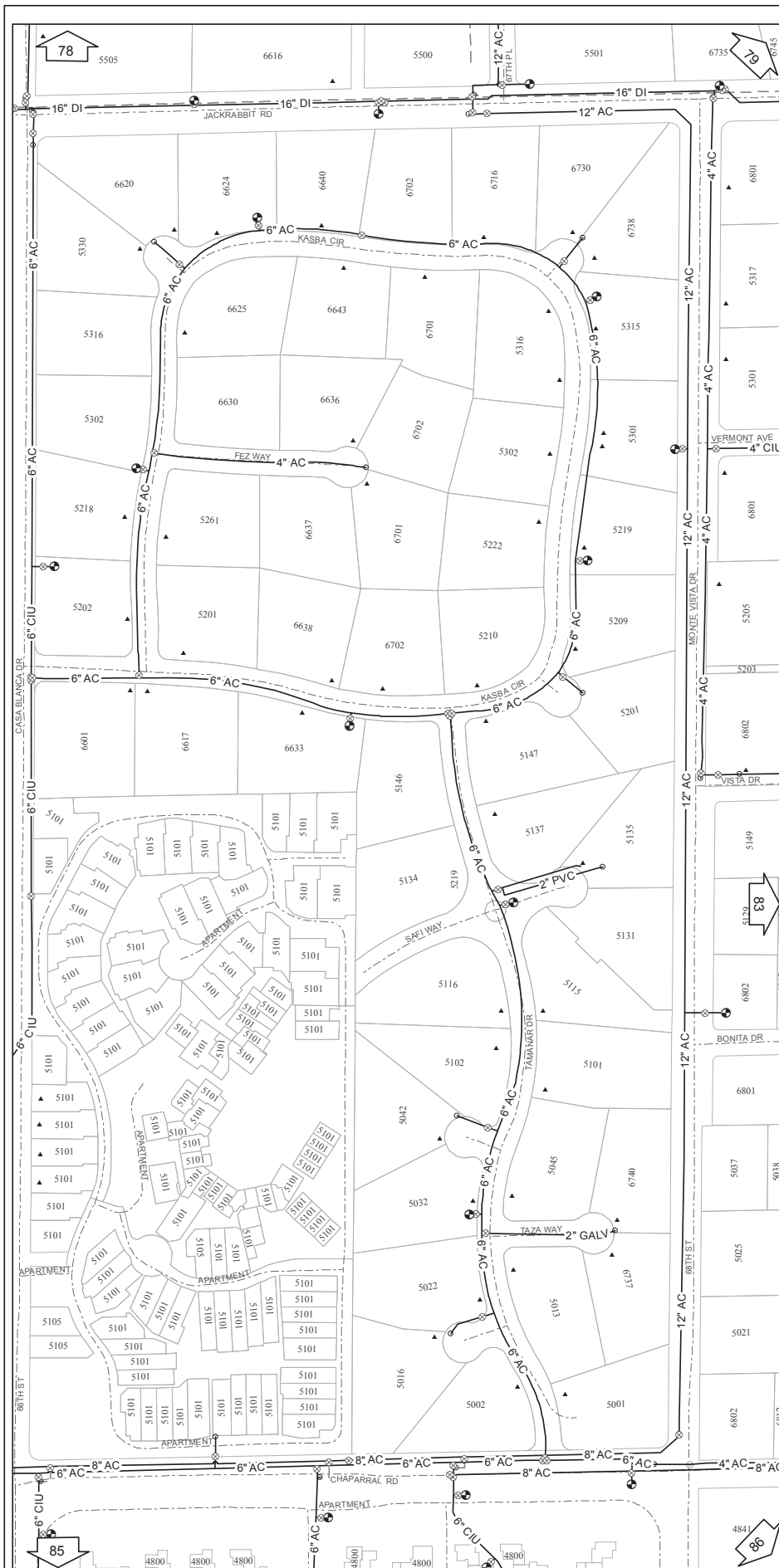


82 PARADISE VALLEY WATER

LEFT

REVISED: MAY 2014

COPYRIGHT © 2012 EPCOR WATER COMPANY
EPCOR MAKES NO CLAIMS CONCERNING THE ACCURACY
OF THIS MAP NOR ASSUMES ANY LIABILITY RESULTING
FROM THE USE OF THE INFORMATION HEREON.



WATER FEATURES

Street Valves

- Air Release
- Ball (Blow-off)
- Double Check
- Pressure Regulate
- Gate, Butterfly Open
- Gate, Butterfly Closed

Other

- Customer Meter
- Hydrant
- Cap/Reducer
- Pump Station
- Tank
- Well
- Water Treatment Plant
- System Interconnection

Lateral Service

- All Types
- (Domestic Not Shown For Map Clarity)

Mains

- Distribution
- Plant
- Transmission

Abandoned Features

- Mains/Laterals
- All Other Features Shown 50% Grey

Mapgrid: 19-43



EPCOR Water
EASTERN DIVISION

82
RIGHT